



SSRM series

45-65A DIN Mount Solid State Relay With Paired SCR Output, Integral Heatsink

File E29244

Users should thoroughly review the technical data before selecting a product part number. It is recommended that users also seek out the pertinent approvals files of the agencies/laboratories and review them to confirm the product meets the requirements for a given application.

Features

- DIN mount design with integral heatsink.
- Choice of 45, 55 or 65A rms inverse-parallel connected SCR output.
- 48 - 660VAC output.
- 4 -32VDC or 90 - 140Vrms input control.
- 4,000V rms optical isolation.
- Green LED input status indicator.
- Finger-safe (IP20) screw clamp terminals for load and control.
- Ground terminal.

Engineering Data

Form: 1 Form A (SPST-NO).

Duty: Continuous.

Isolation: 4,000V rms input-to-output-to-ground.

Insulation Resistance: 10⁹ Ohms, minimum, at 500VDC.

Capacitance: 8.0 pf maximum (input to output).

Temperature Range:

Storage: -40°C to +125°C

Operating: -40°C to + 80°C

Case and Mounting: Refer to outline dimension drawing.

Termination:

Control: Finger safe (IP20) screw clamps accepting wire size up to #12 AWG (2.5 mm).

Load: Finger safe (IP20) screw clamps accepting wire size up to #8 AWG (3.8 mm).

Ground: #10 screw with 5/16 in. hex/slotted head.

Installation Spacing: Minimum 0.8 in (20 mm) space between units.

Approximate Weight: 16.9 oz. (479 g).

Ordering Information

Sample Part Number ▶

SSRM

-600

A

55

1. Basic Series: SSRM = Solid State Relay with Integral Heatsink for DIN Rail Mounting

2. Line Voltage: 600 = 48 - 660 VAC

3. Input Type & Voltage: A = 90 - 140VAC
D = 4 - 32VDC

4. Maximum Switching Rating/Output: 45 = 45.0A rms
55 = 55.0A rms
65 = 65.0A rms

Our authorized distributors are more likely to maintain the following items in stock for immediate delivery.

SSRM-600A45
SSRM-600D45

SSRM-600A55
SSRM-600D55

SSRM-600A65
SSRM-600D65

Input Specifications

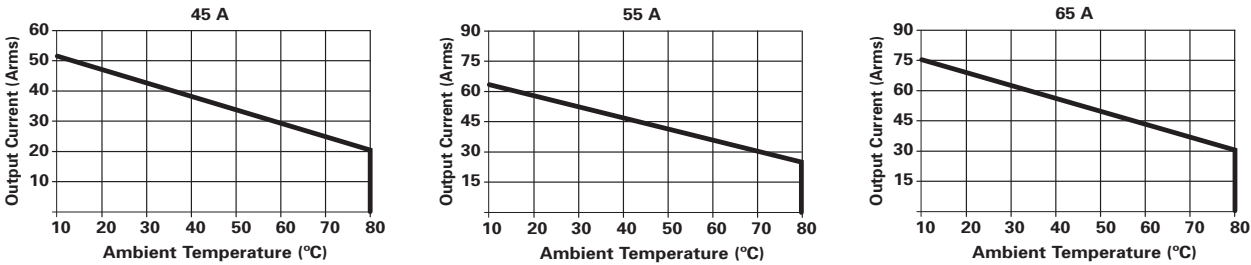
Parameter	Conditions	AC Control Units	DC Control Units
Control Voltage Range V _{IN}	@ 25°C	90 - 140 Vrms	4.0 - 32 VDC
Reverse Voltage V _{IN(Max.)}	@ 25°C	—	32 VDC
Must Operate Voltage V _{IN(OP)} (Min.)	@ 25°C	90 Vrms	4.0 VDC
Must Release Voltage V _{IN(REL)} (Min.)	@ 25°C	10 Vrms	1.0 VDC
Input Current (Typ.)	@ 25°C	15 mA @ 120 Vrms	14 mA @ 5 VDC
Input Current (Max.)	@ 25°C	—	30 mA

Output Specifications (@ 25° C, unless otherwise specified)

Parameter	Conditions	Units	45A Rated Units	55A Rated Units	65A Rated Units
Load Voltage Range V_L	$f = 47 - 63 \text{ Hz.}$	V rms	48 - 660	48 - 660	48 - 660
Repetitive Blocking Voltage (Min.)		V peak	± 1200	± 1200	± 1200
Load Current Range I_L^*		A rms	0.15 - 45.0	0.25 - 55.0	0.25 - 65.0
Single Cycle Surge Current (Min.)		A peak	625	1,000	1,200
Leakage Current (Off-State) (Max.)	$f = 60 \text{ Hz. } V_L = 600\text{Vrms}$	mA rms	1.0	1.0	1.0
Thermal Resistance Junction to Case $R_{\theta J-C}$ (Max.)		°C/W	0.63	0.31	0.28
On-State Voltage Drop (Max.)	$I_L = \text{Max.}$	V peak	1.7	1.7	1.7
Static dv/dt (Off-State) (Min.)	$V_L = \text{Max.}$	V/ μs	500	500	500
Turn-On Time (Max.)	$f = 60 \text{ Hz.}$	ms	8.3 for DC Input Models, 10.0 for AC Input Models		
Turn-Off Time (Max.)	$f = 60 \text{ Hz.}$	ms	8.3 for DC Input Models, 40.0 for AC Input Models		
$I^2 t$ Rating (Max.)	$t = 8.3 \text{ ms}$	A ² Sec.	1,620	4,150	6,000
Load Power Factor Rating (Min.)	$I_L = \text{Max.}$		0.5	0.5	0.5

*See Thermal Derating Curves.

Electrical Characteristics (Thermal Derating Curves)



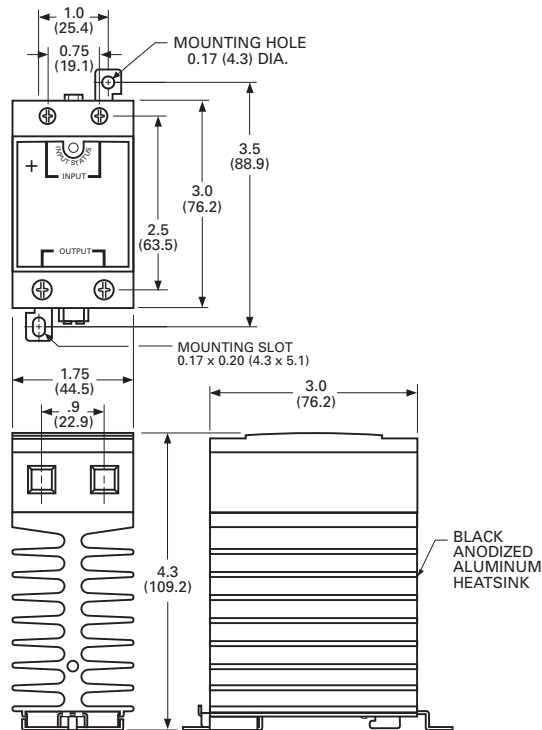
Disclaimer

While Tyco Electronics has made every reasonable effort to ensure the accuracy of the information in this document, Tyco Electronics does not guarantee that it is error-free, nor does Tyco Electronics make any other representation, warranty or guarantee that the information is accurate, correct, reliable or current.

Tyco Electronics reserves the right to make any adjustments to the information contained herein at any time without notice. Tyco Electronics expressly disclaims all implied warranties regarding the information contained herein, including, but not limited to, any implied warranties of merchantability or fitness for a particular purpose.

The dimensions in this catalog are for reference purposes only and are subject to change without notice. Specifications are subject to change without notice. Consult Tyco Electronics for the latest dimensions and design specifications.

Outline Dimensions



Recommended Torque Range for Terminal Screws:
 Control: 5 - 6 in lb (0.6 - 0.7 Nm).
 Output: 10 - 15 in lb (1.1 - 1.7 Nm).

Данный компонент на территории Российской Федерации

Вы можете приобрести в компании MosChip.

Для оперативного оформления запроса Вам необходимо перейти по данной ссылке:

<http://moschip.ru/get-element>

Вы можете разместить у нас заказ для любого Вашего проекта, будь то серийное производство или разработка единичного прибора.

В нашем ассортименте представлены ведущие мировые производители активных и пассивных электронных компонентов.

Нашей специализацией является поставка электронной компонентной базы двойного назначения, продукции таких производителей как XILINX, Intel (ex.ALTERA), Vicor, Microchip, Texas Instruments, Analog Devices, Mini-Circuits, Amphenol, Glenair.

Сотрудничество с глобальными дистрибьюторами электронных компонентов, предоставляет возможность заказывать и получать с международных складов практически любой перечень компонентов в оптимальные для Вас сроки.

На всех этапах разработки и производства наши партнеры могут получить квалифицированную поддержку опытных инженеров.

Система менеджмента качества компании отвечает требованиям в соответствии с ГОСТ Р ИСО 9001, ГОСТ РВ 0015-002 и ЭС РД 009

Офис по работе с юридическими лицами:

105318, г.Москва, ул.Щербаковская д.3, офис 1107, 1118, ДЦ «Щербаковский»

Телефон: +7 495 668-12-70 (многоканальный)

Факс: +7 495 668-12-70 (доб.304)

E-mail: info@moschip.ru

Skype отдела продаж:

moschip.ru

moschip.ru_4

moschip.ru_6

moschip.ru_9