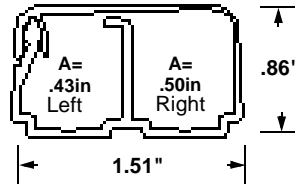


PANDUIT
RACEWAY SYSTEMS DIVISION



PAN-WAY™ LD2P10 Surface Raceway System



Open Channel

40% Cable Fill Capacity

Cable Type	# Of Cables
12 AWG	11
CAT 5 Cable	4 left 5 right
4 Strand Fiber Cable	7 left 8 right

PAN-WAY™ LD2P10 Raceway — Specifications

Type LD2P10 non-metallic, two channel, one piece tamper resistant latch design, adhesive backed, hinged cover, surface raceway shall be used to route, protect, and conceal data, voice, fiber optic, and power cabling. The surface raceway shall be listed as suitable for use in applications having up to 600V between conductors by underwriters Laboratories, Inc. Standard 5A, and rated up to 300V by Canadian Standards Association Standard 22.2 No. 62-93, when screw secured and installed per instructions. The raceway will include a full complement of fittings which maintain a 1" minimum bend radius, compliant with TIA/EIA Standards 568-A, as well as junction boxes which allow termination of both power and communications cabling. Type LD2P10 raceway will be manufactured from impact-resistant material with flammability rating of UL94V-0. Type LD2P10 raceway finish shall be pure color and will resist scratches and dents, and will not peel or corrode. Type LD2P10 raceway shall be available in four standard colors and shall be optimized for use with PANDUIT® PAN-NET™ Network Cabling System.

Technical Data

Material	Rigid PVC
Flammability	UL94V-0
Voltage Rating	UL-5A 600VAC CSA 22.2 NO.62-93 300VAC
Approvals	UL Listed 95425 (Raceway) UL Listed E116129 (Fittings)
NEC	Article 352B

PAN-WAY™ LD2P10 Raceway — Features and Benefits

Multichannel system	Complete system of multichannel raceway, fittings and surface mount outlet boxes*	Only need to purchase and install one raceway system to route both power and data cabling
1" bend radius control fittings	Cables in the raceway will satisfy the minimum 1" bend radius requirement, preventing the potential degradation of cable performance	Maximizes headroom of high performance cabling systems, such as Gigabit Ethernet, Fast Ethernet, Fiber and ATM
	Meets TIA/EIA Standards	Meets many warranty requirements
One piece hinged design	Cable can be laid into the raceway, not pulled through	Prevents damage to cables during the installation
	Speeds installation	Lowers the total installed cost
Raceway is adhesive backed (for use as temporary mounting)	Installations are easier and faster	Reduces the cost of installing the raceway
Highly tamper resistant	Is very difficult for untrained personnel to enter the raceway or remove faceplates from outlet boxes	Provides maximum security for the communications cabling & maximum safety for the power cabling
Non-Metallic construction	Lightweight	Reduces installer fatigue. Allows for one person installation, reducing labor required to install the raceway
	Solid color throughout	Will not chip, peel, rust or corrode; masks scratches
	Easy to cut with standard saws and saw blades	Reduces installed cost and the need for special cutting devices
	High impact resistance	Extremely durable for a long life
Available in 4 standard colors	Matches a wide variety of decors	Applications vary from the classroom to the executive office

* Boxes listed on separate sheet

Colors

IW	Off White
EL	Electrical Ivory
IG	International Gray
WH	White

CSI Spec Form:
LP-CSISPEC-LD2P10-1

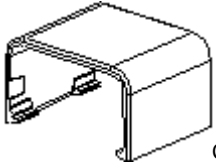
Installer Tip

Use LDW Tool to hold cover open and as drill bit guide for screw mount applications.

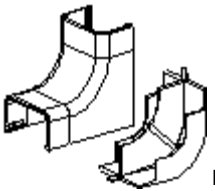
LD2P10 Surface Raceway System



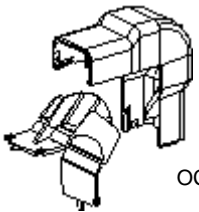
LD2P10



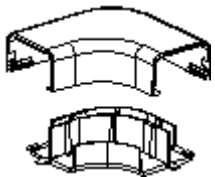
CFX



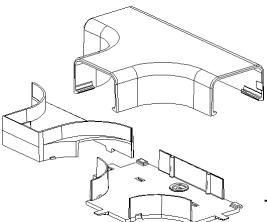
ICFX



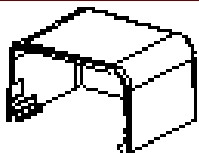
OCFX



RAFX



TFXD

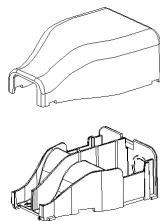


ECFX

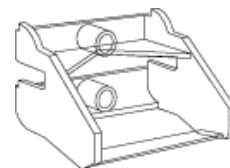
PAN-WAY™ LD2P10 Raceway — Components

Product	Part Number	Description
LD2P10 Raceway	LD2P10IW8-A	LD2P10 Raceway. Supplied in eight (8) foot and ten (10) foot lengths.
Coupler Fitting	CFX10IW-X	For use with LD2P10 raceway. Used to join two pieces of raceway together
Inside Corner Fitting	ICFX10IW-X	For use with LD2P10 raceway. Used to join LD2P10 raceway at inside corners. Maintains minimum 1" bend radius of cabling.
Outside Corner Fitting	OCFX10IW-X	For use with LD2P10 raceway. Used to join LD2P10 raceway at outside corners. Maintains minimum 1" bend radius of cabling.
Right Angle Fitting	RAFX10IW-X	For use with LD2P10 raceway. Used to join sections of LD2P10 raceway to make horizontal 90° right angles. Maintains minimum 1" bend radius and separation of power and data cabling.
Tee Fitting	TFXD10IW-X	For use with LD2P10 raceway. Used to join sections of LD2P10 raceway at tee intersections. Maintains minimum 1" bend radius of cabling.
End Cap Fitting	ECFX10IW-X	For use with LD2P10 raceway. Used to terminate a run of raceway.
Entrance End fitting	EEFXIW	For use with LD2P10 raceway. Used to enter raceway either through the back or from the end with ½" or ¾" conduit. Maintains minimum 1" bend radius of cable.
LDP Raceway Installation Tool	LDW10-V	Optional installation tool for use with Type LD2P10 raceway. Serves as guide for drill bit in screw mount applications. Holds LD2P raceway cover open during installation.

*All parts listed in Off White (IW) color. To order other colors substitute Electrical Ivory (EI), Light Gray (IG), and White (WH). Contact factory for details.



EEFX



LDW-V



NETWORK SYSTEMS GROUP

Panduit Corp.
 Phone: 888-506-5400, Ext. 8287
 Fax: 815-836-0551
 Email: info@panduit.com
 Website: www.panduit.com

Panduit Canada
 Phone: 800-387-9689
 FAX: 905-475-6998

WORLDWIDE SUBSIDIARIES AND SALES OFFICES

The information contained in this literature is based on our experience to date and is believed to be reliable. It is intended as a guide for use by persons having technical skill at their own discretion and risk. We do not guarantee favorable results or assume any liability in connection with its use. Dimensions contained herein are for reference purposes only. For specific dimensional requirements consult the factory. This publication is not to be taken as a license to operate under, or a recommendation to infringe any existing patents. This supersedes and voids all previous literature, etc.

©Panduit Corp. 2000
 ALL RIGHTS RESERVED

Данный компонент на территории Российской Федерации

Вы можете приобрести в компании MosChip.

Для оперативного оформления запроса Вам необходимо перейти по данной ссылке:

<http://moschip.ru/get-element>

Вы можете разместить у нас заказ для любого Вашего проекта, будь то серийное производство или разработка единичного прибора.

В нашем ассортименте представлены ведущие мировые производители активных и пассивных электронных компонентов.

Нашей специализацией является поставка электронной компонентной базы двойного назначения, продукции таких производителей как XILINX, Intel (ex.ALTERA), Vicor, Microchip, Texas Instruments, Analog Devices, Mini-Circuits, Amphenol, Glenair.

Сотрудничество с глобальными дистрибьюторами электронных компонентов, предоставляет возможность заказывать и получать с международных складов практически любой перечень компонентов в оптимальные для Вас сроки.

На всех этапах разработки и производства наши партнеры могут получить квалифицированную поддержку опытных инженеров.

Система менеджмента качества компании отвечает требованиям в соответствии с ГОСТ Р ИСО 9001, ГОСТ РВ 0015-002 и ЭС РД 009

Офис по работе с юридическими лицами:

105318, г.Москва, ул.Щербаковская д.3, офис 1107, 1118, ДЦ «Щербаковский»

Телефон: +7 495 668-12-70 (многоканальный)

Факс: +7 495 668-12-70 (доб.304)

E-mail: info@moschip.ru

Skype отдела продаж:

moschip.ru

moschip.ru_4

moschip.ru_6

moschip.ru_9