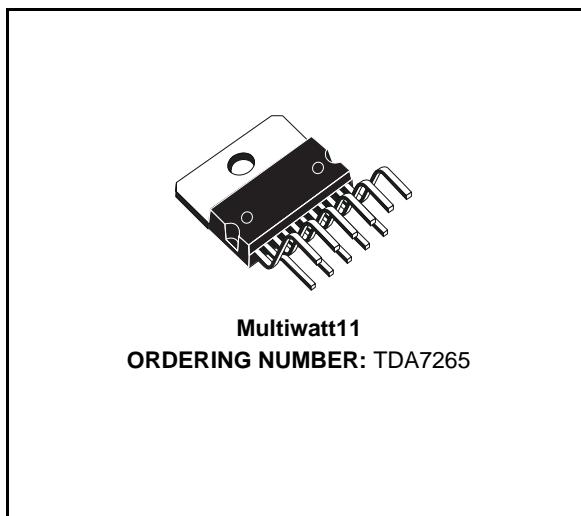


25 +25W STEREO AMPLIFIER WITH MUTE & ST-BY

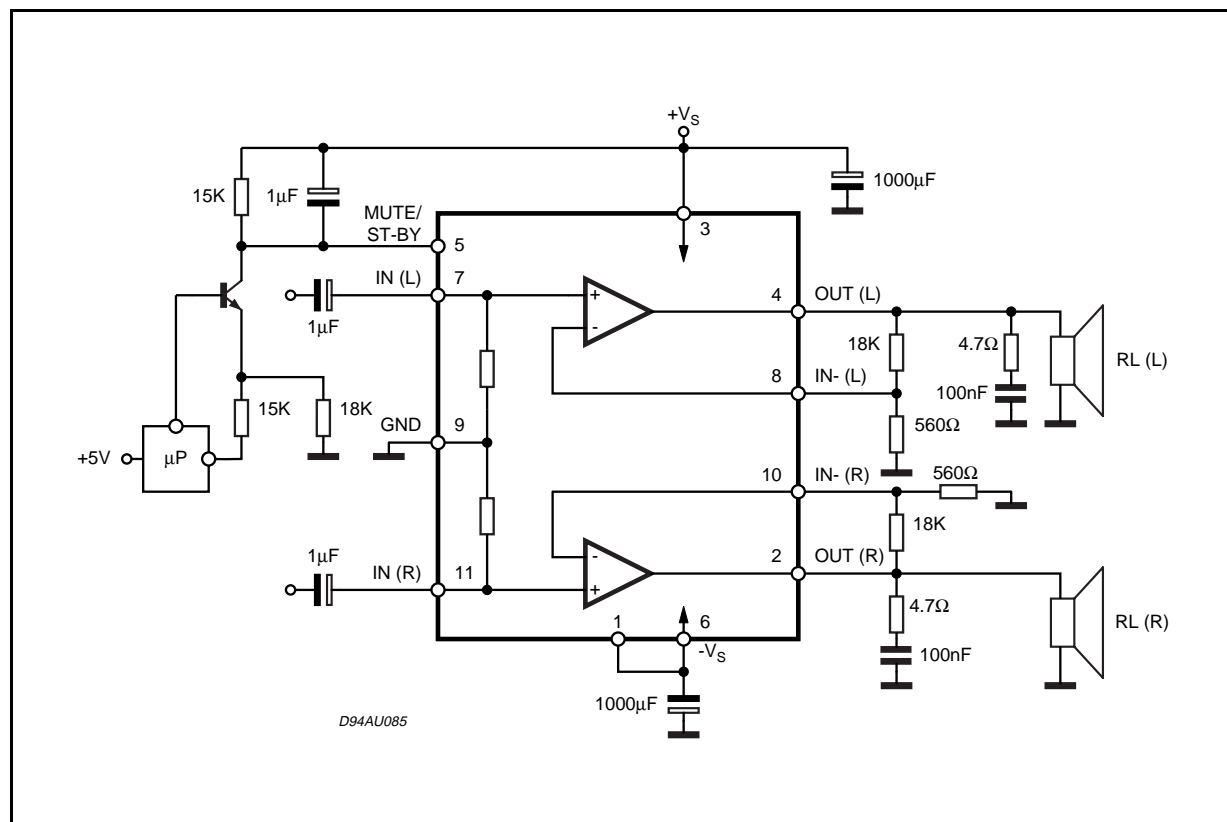
- WIDE SUPPLY VOLTAGE RANGE (UP TO $\pm 25V$ ABS MAX.)
- SPLIT SUPPLY
- HIGH OUTPUT POWER
25 + 25W @ THD = 10%, $R_L = 8\Omega$, $V_S = \pm 20V$
- NO POP AT TURN-ON/OFF
- MUTE (POP FREE)
- STAND-BY FEATURE (LOW I_q)
- SHORT CIRCUIT PROTECTION
- THERMAL OVERLOAD PROTECTION



DESCRIPTION

The TDA7265 is class AB dual Audio power amplifier assembled in the Multiwatt package, specially designed for high quality sound application as Hi-Fi music centers and stereo TV sets.

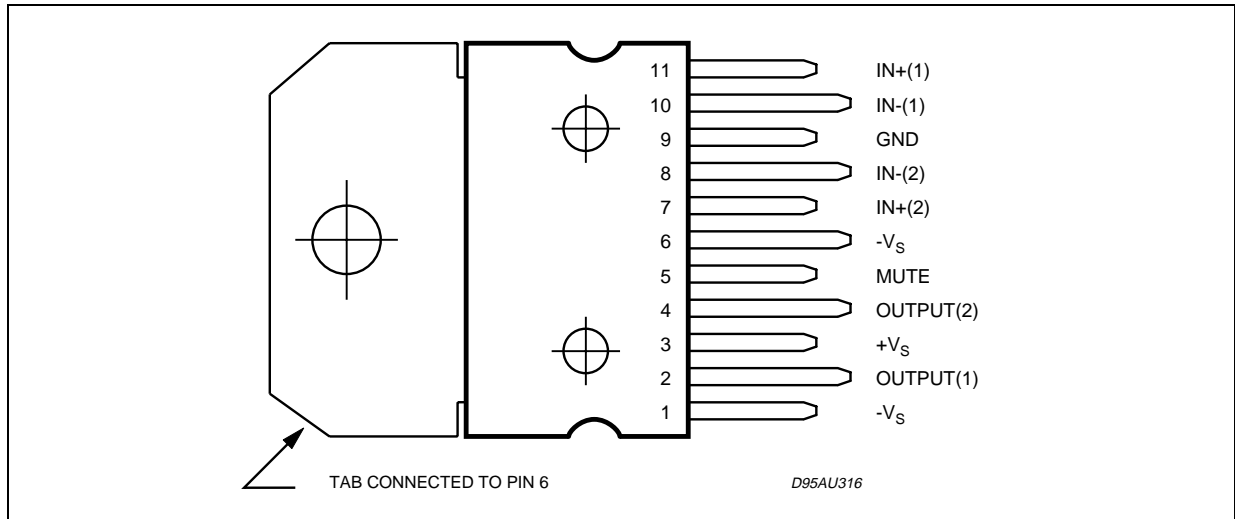
Figure 1: Typical Application Circuit in Split Supply



ABSOLUTE MAXIMUM RATINGS

| Symbol | Parameter | Value | Unit |
|----------------|---|-------------|------------------|
| V_S | DC Supply Voltage | ± 25 | V |
| I_O | Output Peak Current (internally limited) | 4.5 | A |
| P_{tot} | Power Dissipation $T_{case} = 70^\circ\text{C}$ | 30 | W |
| T_{op} | Operating Temperature | -20 to 85 | $^\circ\text{C}$ |
| T_{stg}, T_j | Storage and Junction Temperature | -40 to +150 | $^\circ\text{C}$ |

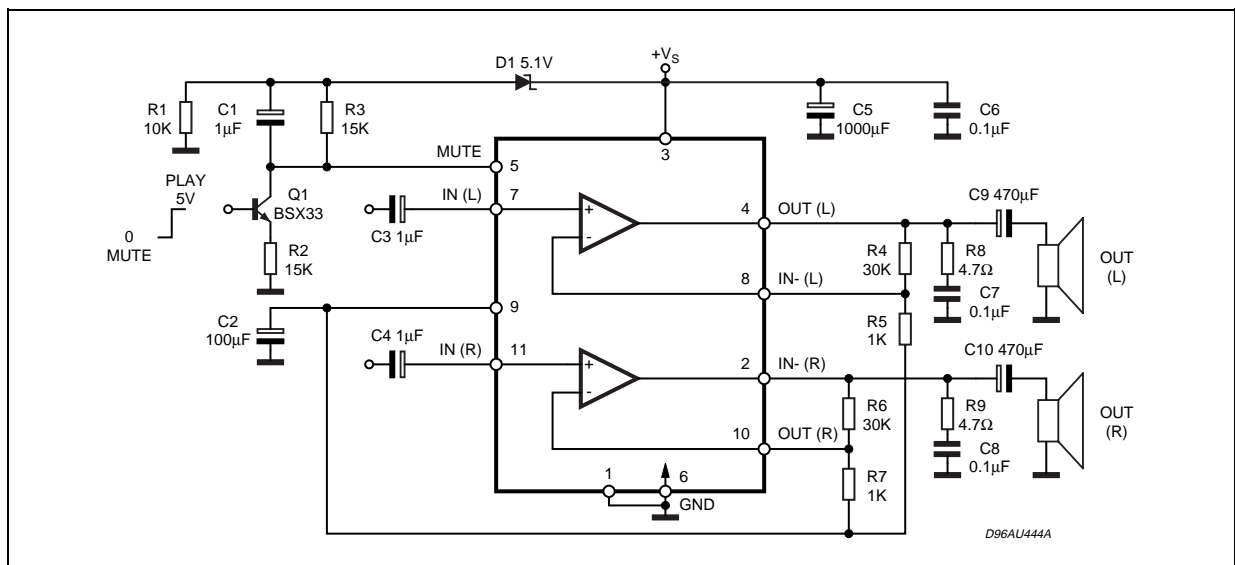
PIN CONNECTION (Top view)



THERMAL DATA

| Symbol | Description | Value | Unit |
|------------------|----------------------------------|-------|--------------------|
| $R_{th\ j-case}$ | Thermal Resistance Junction-case | Max 2 | $^\circ\text{C/W}$ |

Fig 2: Typical Application Circuit in Single Supply



ELECTRICAL CHARACTERISTICS (Refer to the test circuit, $V_S = \pm 20V$; $R_L = 8\Omega$; $R_S = 50\Omega$; $G_V = 30dB$; $f = 1KHz$; $T_{amb} = 25^\circ C$, unless otherwise specified.)

| Symbol | Parameter | Test Condition | Min. | Typ. | Max. | Unit |
|-------------------------------------|--|---|---------|----------|----------|------------|
| V_S | Supply Range | | ± 5 | | ± 25 | V |
| I_q | Total Quiescent Current | | | 80 | 130 | mA |
| V_{OS} | Input Offset Voltage | | -20 | | +20 | mV |
| I_b | Non Inverting Input Bias Current | | | 500 | | nA |
| P_O | Music Output Power (*) | THD = 10%; $R_L = 8\Omega$; $V_S = \pm 22.5V$ | | 32 | | W |
| P_O | Output Power | THD = 10% $R_L = 8\Omega$; $V_S \pm 16V$; $R_L = 4\Omega$ | 20 | 25 25 | | W W |
| | | THD = 1% $R_L = 8\Omega$; $V_S \pm 16V$; $R_L = 4\Omega$ | | 20 20 | | W W |
| THD | Total Harmonic Distortion | $R_L = 8\Omega$; $P_O = 1W$; $f = 1KHz$ | | 0.01 | | % |
| | | $R_L = 8\Omega$; $P_O = 0.1$ to $15W$; $f = 100Hz$ to $15KHz$ | | | 0.7 | % |
| | | $R_L = 4\Omega$; $P_O = 1W$; $f = 1KHz$ | | 0.02 | | % |
| | | $R_L = 4\Omega$; $V_S \pm 16V$; $P_O = 0.1$ to $12W$; $f = 100Hz$ to $15KHz$ | | | 1 | % |
| C_T | Cross Talk | $f = 1KHz$ | | 70 | | dB |
| | | $f = 10KHz$ | | 60 | | dB |
| SR | Slew Rate | | | 10 | | V/ μs |
| G_{OL} | Open Loop Voltage Gain | | | 80 | | dB |
| e_N | Total Input Noise | A Curve $f = 20Hz$ to $22KHz$ | | 3 | | μV |
| | | | | 4 | 8 | μV |
| R_i | Input Resistance | | 15 | 20 | | K Ω |
| SVR | Supply Voltage Rejection (each channel) | $f_r = 100Hz$ $V_r = 0.5V$ | | 60 | | dB |
| T_j | Thermal Shut-down Junction Temperature | | | 145 | | $^\circ C$ |
| MUTE FUNCTION [ref: +Vs] | | | | | | |
| V_{T_MUTE} | Mute / Play Threshold | | -7 | -6 | -5 | V |
| A_M | Mute Attenuation | | 60 | 70 | | dB |
| STAND-BY FUNCTION [ref: +Vs] | | | | | | |
| V_{T_ST-BY} | Stand-by / Mute Threshold | | -3.5 | -2.5 | -1.5 | V |
| A_{ST-BY} | Stand-by Attenuation | | | 110 | | dB |
| I_{q_ST-BY} | Quiescent Current @ Stand-by | | | 3 | | mA |

Note :

(*) FULL POWER up to. $V_S = \pm 22.5V$ with $R_L = 8\Omega$ and $V_S = \pm 16V$ with $R_L = 4\Omega$

MUSIC POWER is the maximal power which the amplifier is capable of producing across the rated load resistance (regardless of non linearity) 1 sec after the application of a sinusoidal input signal of frequency 1KHz.

Figure 3: Quiescent Current vs. Supply Voltage

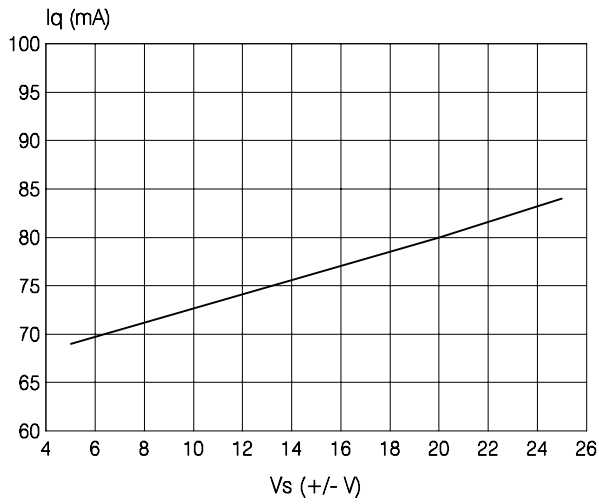


Figure 4: Frequency Response

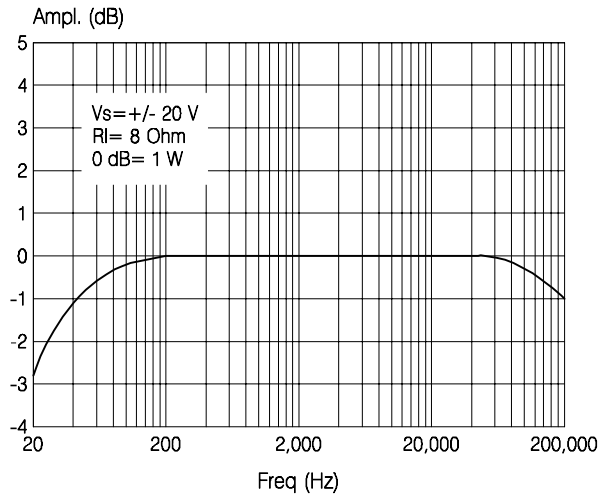


Figure 5: Output Power vs. Supply Voltage

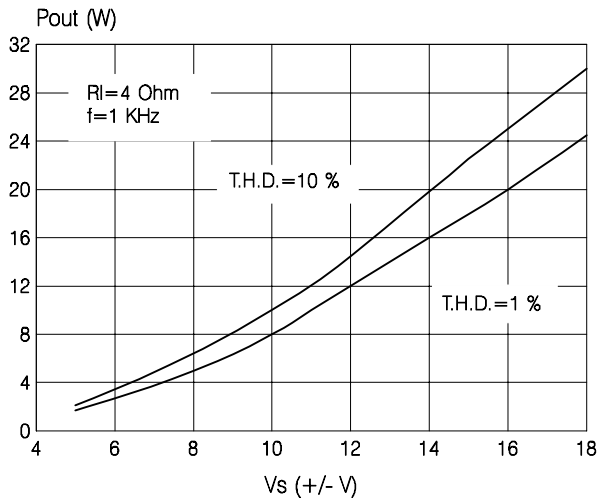


Figure 6: T.H.D. vs. Output Power

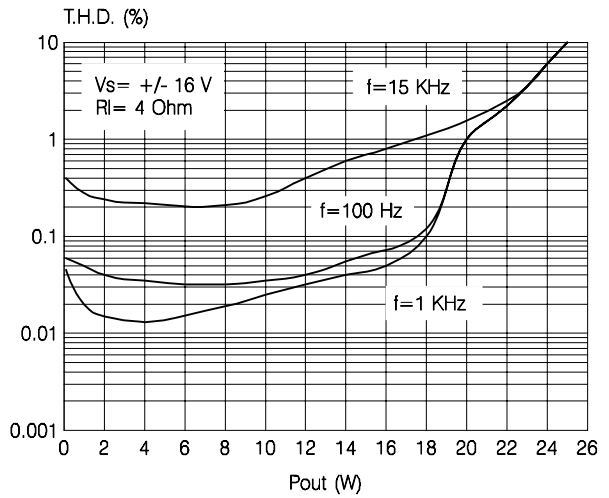


Figure 7: Output Power vs. Supply Voltage

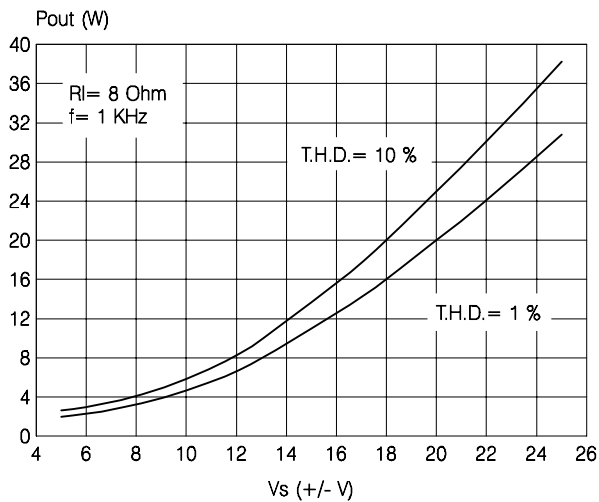


Figure 8: T.H.D. vs. Output Power

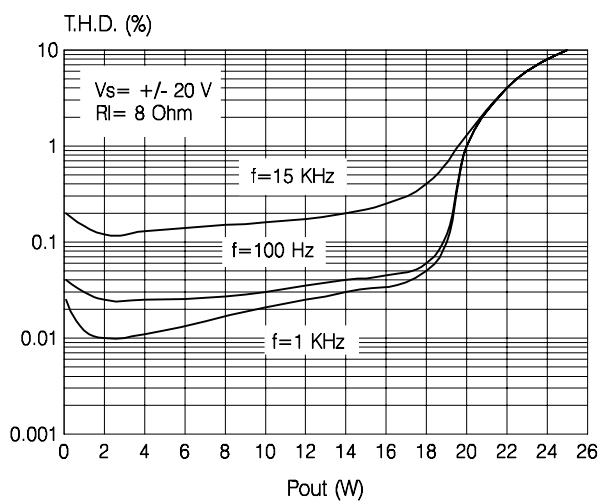


Figure 9: Quiescent Current vs. Pin # 5 Voltage

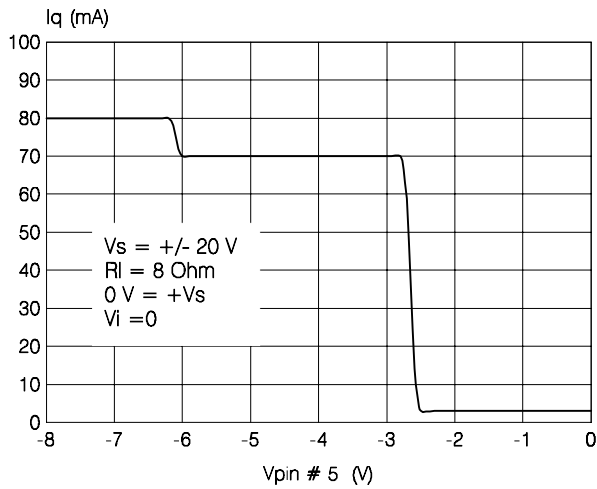


Figure 10: Attenuation vs. Pin # 5 Voltage

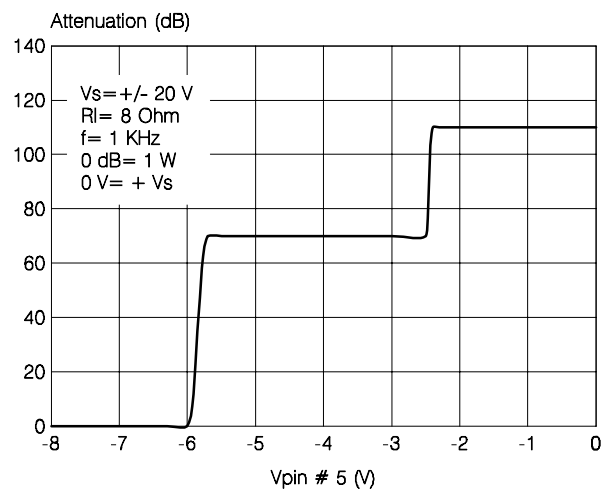


Figure 11: SVR vs. Frequency

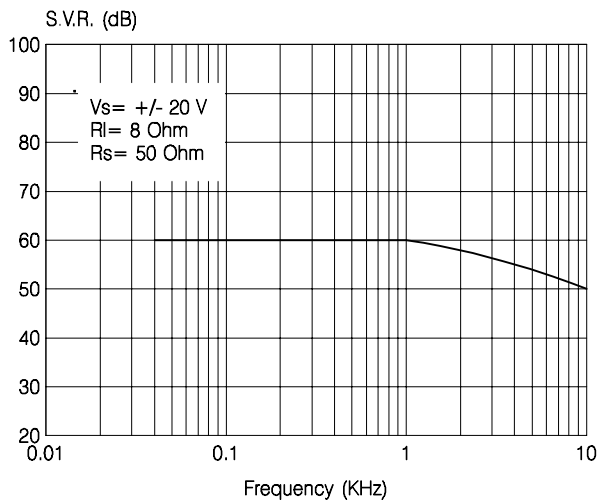


Figure 12: Crosstalk vs. Frequency

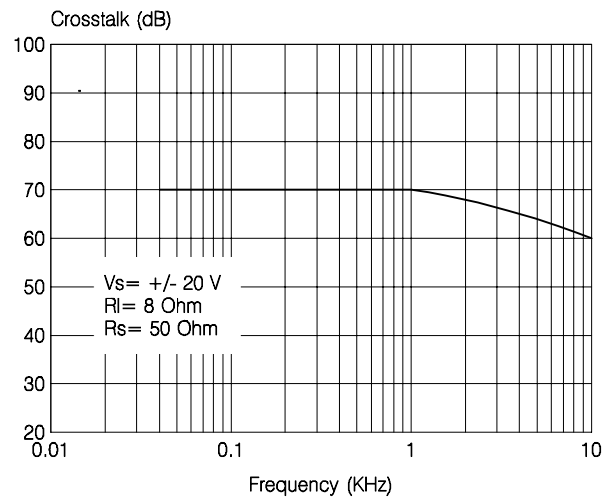


Figure 13: Power Dissipation vs. Output Power

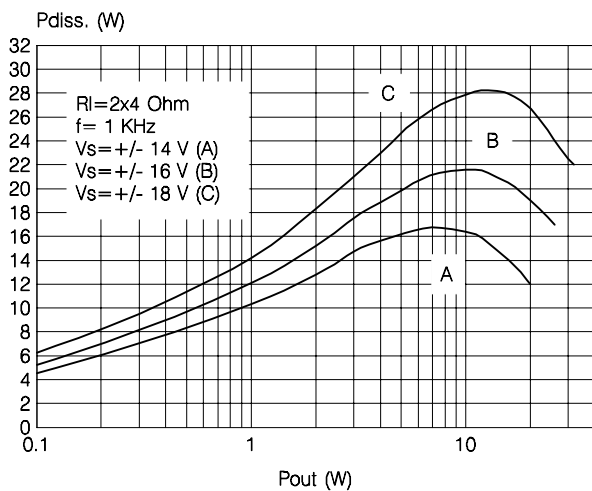
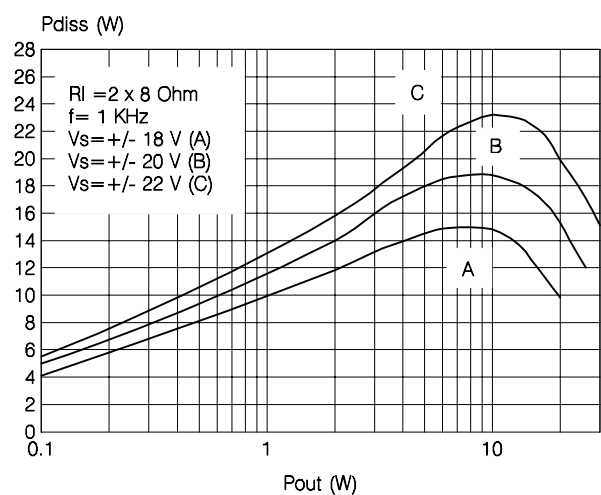


Figure 14: Power Dissipation vs. Output Power



MUTE STAND-BY FUNCTION

The pin 5 (MUTE/STAND-BY) controls the amplifier status by two different thresholds, referred to +Vs.

- When V_{pin5} higher than $+Vs - 2.5V$ the amplifier is in Stand-by mode and the final stage generators are off

- when V_{pin5} is between $+Vs - 2.5V$ and $+Vs - 6V$ the final stage current generators are switched on and the amplifier is in mute mode
- when V_{pin5} is lower than $+Vs - 6V$ the amplifier is play mode.

Figure 15

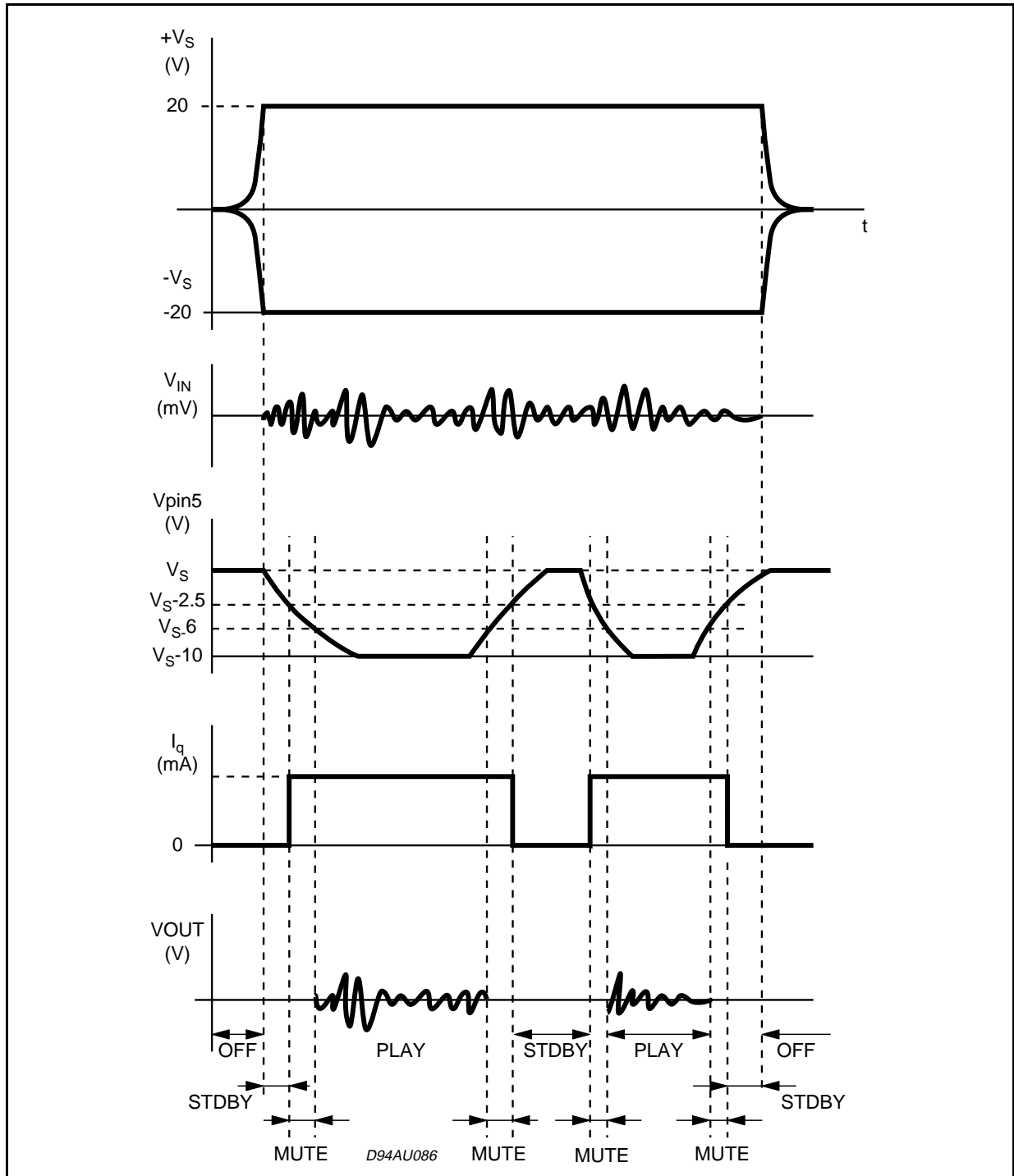


Figure 16: Test and Application Circuit (Stereo Configuration)

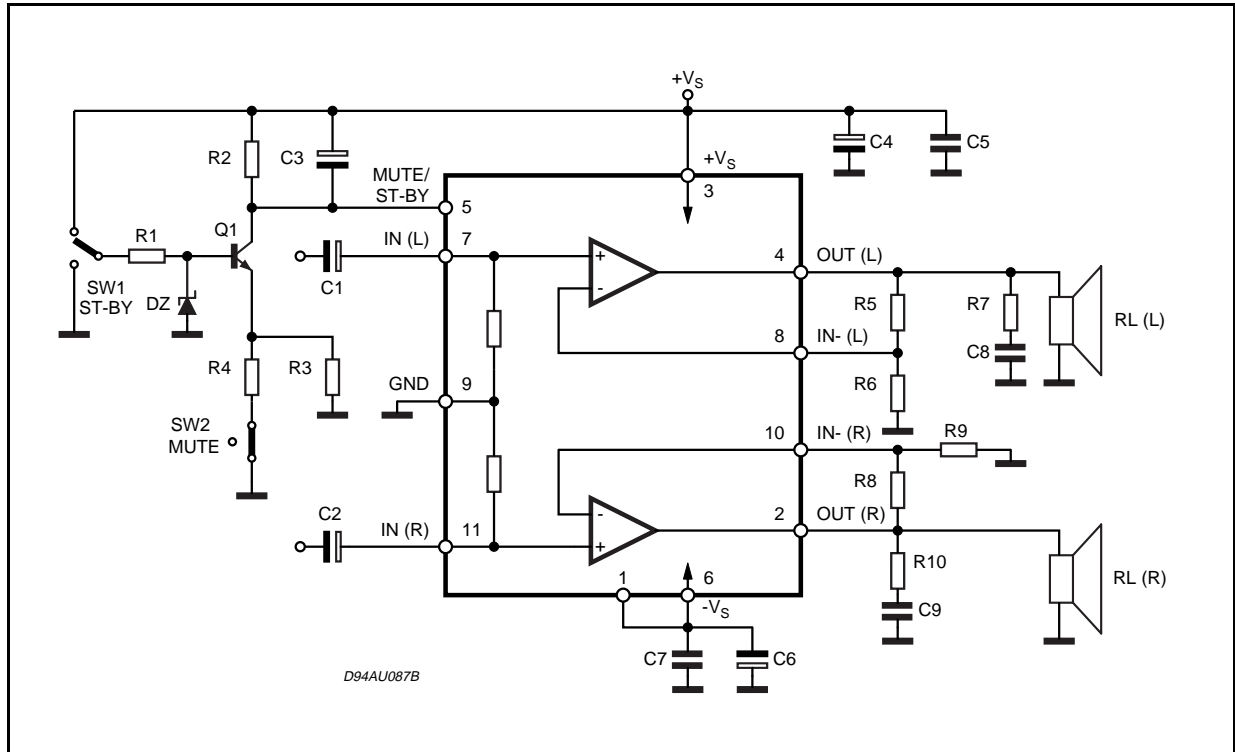
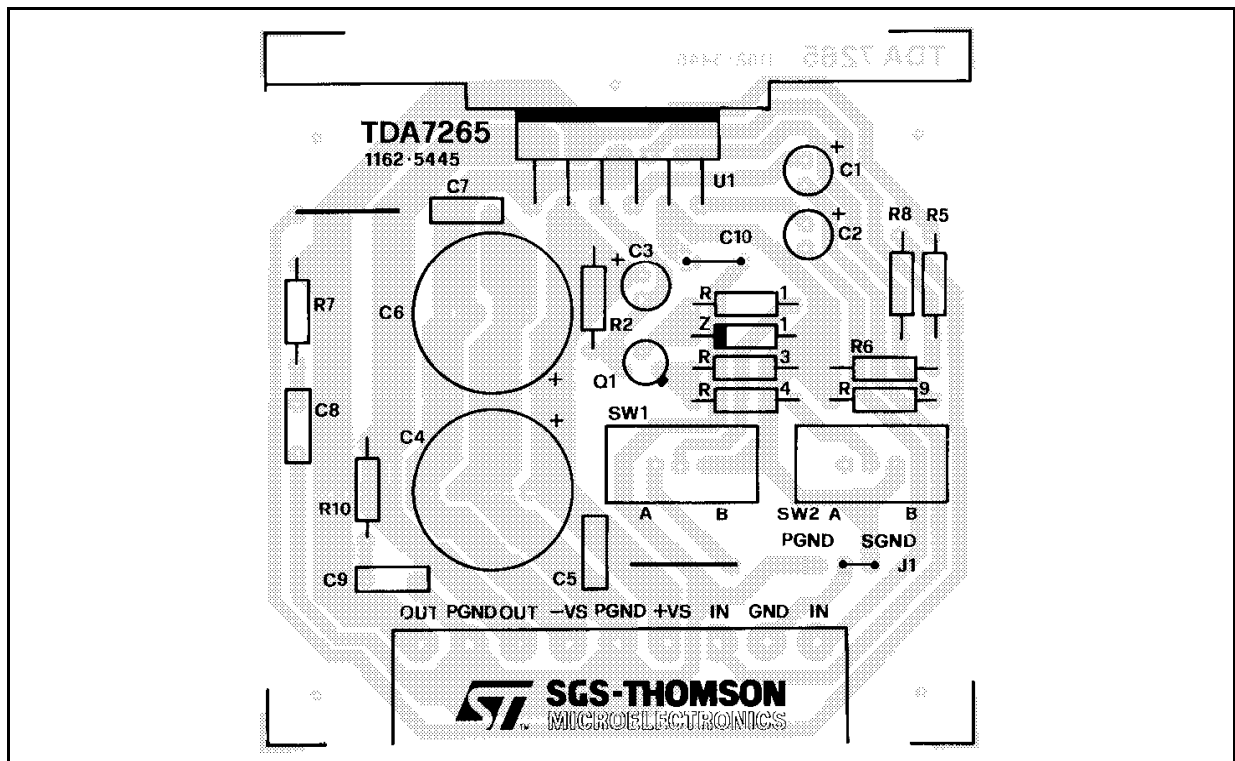


Figure 17: PC Board and Components Layout of the figure 15 (1:1 scale)



APPLICATIONS SUGGESTION

(Demo Board Schematic)

The recommended values of the external compo-

nents are those shown are the demo board schematic different values can be used: the following table can help the designer.

| COMPONENTS | RECOMMENDED VALUE | PURPOSE | LARGER THAN RECOMMENDED VALUE | SMALLER THAN RECOMMENDED VALUE |
|------------|-------------------|------------------------------|---------------------------------------|---------------------------------------|
| R1 | 10KΩ | Mute Circuit | Increase of Dz Biasing Current | |
| R2 | 15KΩ | Mute Circuit | V _{pin # 5} Shifted Downward | V _{pin # 5} Shifted Upward |
| R3 | 18KΩ | Mute Circuit | V _{pin # 5} Shifted Upward | V _{pin # 5} Shifted Downward |
| R4 | 15KΩ | Mute Circuit | V _{pin # 5} Shifted Upward | V _{pin # 5} Shifted Downward |
| R5, R8 | 18KΩ | Closed Loop Gain Setting (*) | Increase of Gain | |
| R6, R9 | 560Ω | | Decrease of Gain | |
| R7, R10 | 4.7Ω | Frequency Stability | Danger of Oscillations | Danger of Oscillations |
| C1, C2 | 1μF | Input DC Decoupling | | Higher Low Frequency Cutoff |
| C3 | 1μF | St-By/Mute Time Constant | Larger On/Off Time | Smaller On/Off Time |
| C4, C6 | 1000μF | Supply Voltage Bypass | | Danger of Oscillations |
| C5, C7 | 0.1μF | Supply Voltage Bypass | | Danger of Oscillations |
| C8, C9 | 0.1μF | Frequency Stability | | |
| Dz | 5.1V | Mute Circuit | | |
| Q1 | BC107 | Mute Circuit | | |

(*) Closed loop gain has to be => 25dB

MUTE, STAND-BY TRUTH TABLE

| SW1 | SW2 | |
|-----|-----|----------|
| B | A | STAND-BY |
| B | B | STAND-BY |
| A | A | MUTE |
| A | B | PLAY |

BRIDGE APPLICATION

Another application suggestion concerns the BRIDGE configuration, where the two power amplifiers are connected as shown by the schematic diagram of figure. 18.

This application shows, however, some operative limits due to dissipation and current capability of the output stage. For this reason, we recommend to use the TDA7265 in bridge with the supply voltage equal/lower than $\pm 16V$ when the load is 8Ω ; with higher loads (i.e. 16Ω), the amplifier can work correctly in the whole supply voltage range.

The detected characteristics of T.H.D. vs P_{out} and Frequency Response are shown in fig.19 and fig.20.

With $R_L=8\Omega$, $V_s=\pm 16V$ the maximum output power obtainable is 50W at T.D.H.=10%.

The quiescent current remains unchanged with respect to the stereo configuration ($\sim 80mA$ as typical at $V_s=\pm 16V$).

The last point to take into consideration concerns the short-circuit protection. As for the stereo application, the TDA7265 is fully protected against any kind of short-circuit (between Out/Gnd, Out/+ V_s and Out/- V_s).

Figure 18: Bridge Application Circuit

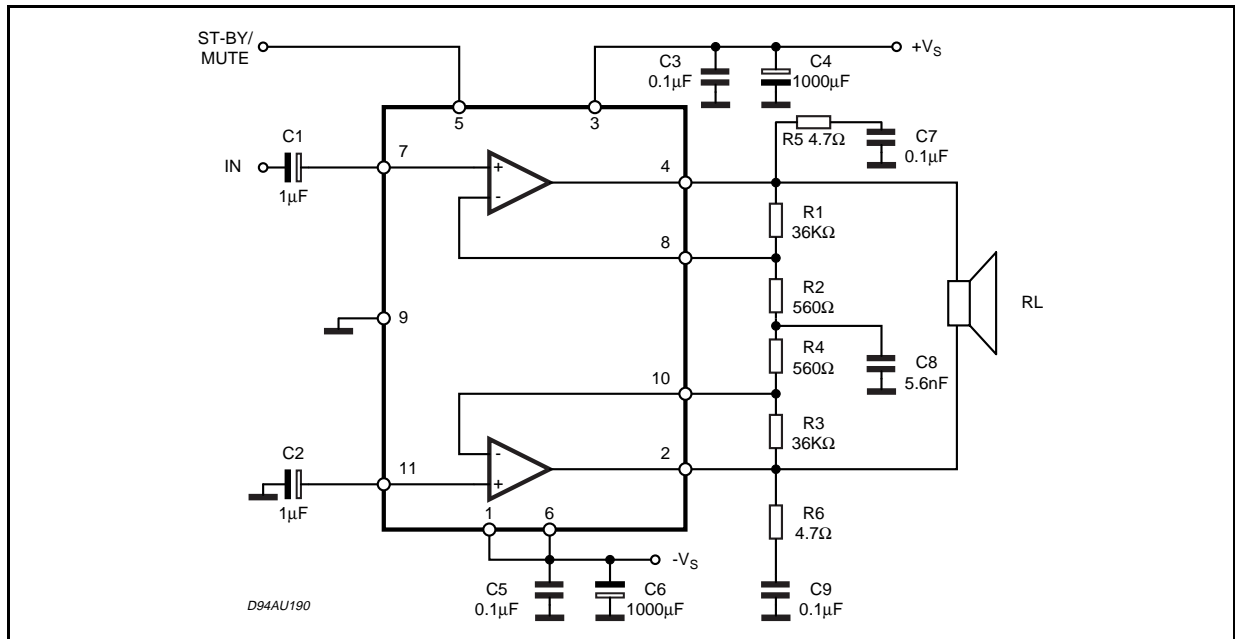


Figure 19: Distortion vs. Output Power

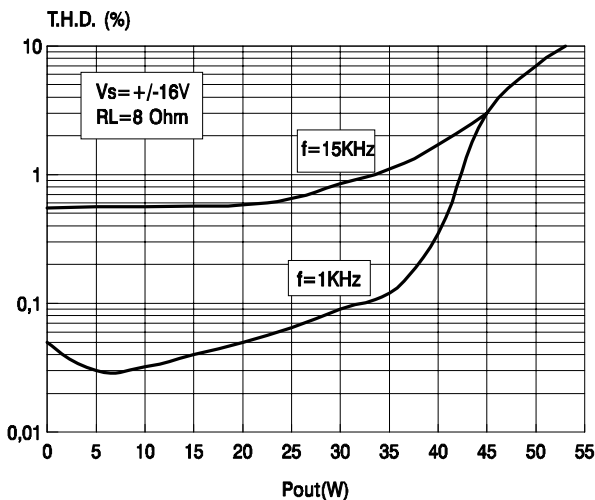
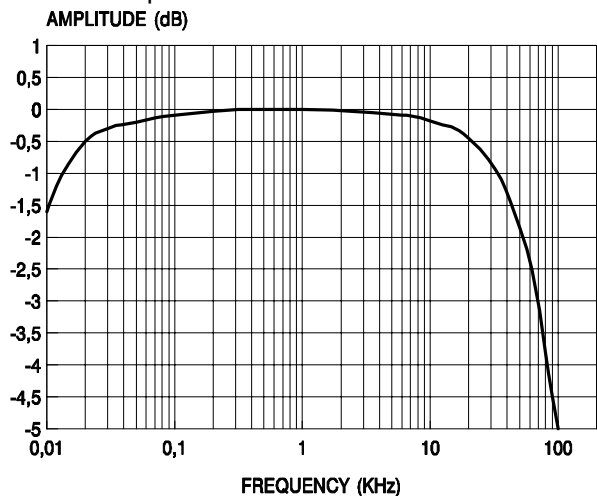
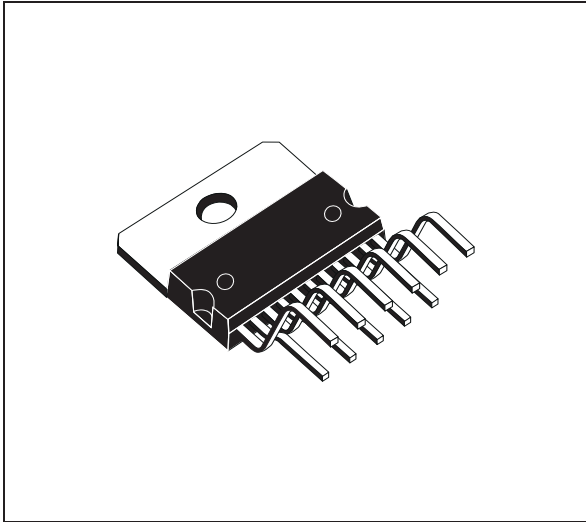


Figure 20: Frequency Response of the Bridge Applications

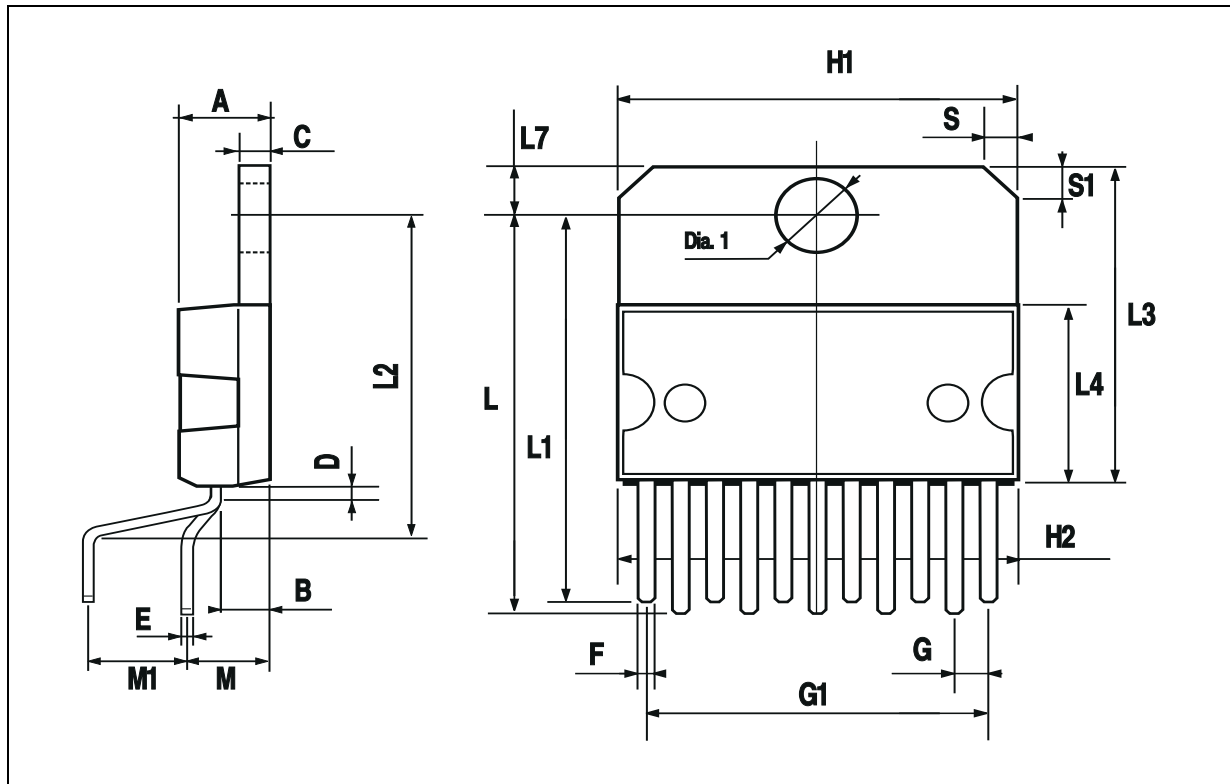


| DIM. | mm | | | inch | | |
|------|-------|------|-------|-------|-------|-------|
| | MIN. | TYP. | MAX. | MIN. | TYP. | MAX. |
| A | | | 5 | | | 0.197 |
| B | | | 2.65 | | | 0.104 |
| C | | | 1.6 | | | 0.063 |
| D | | 1 | | | 0.039 | |
| E | 0.49 | | 0.55 | 0.019 | | 0.022 |
| F | 0.88 | | 0.95 | 0.035 | | 0.037 |
| G | 1.45 | 1.7 | 1.95 | 0.057 | 0.067 | 0.077 |
| G1 | 16.75 | 17 | 17.25 | 0.659 | 0.669 | 0.679 |
| H1 | 19.6 | | | 0.772 | | |
| H2 | | | 20.2 | | | 0.795 |
| L | 21.9 | 22.2 | 22.5 | 0.862 | 0.874 | 0.886 |
| L1 | 21.7 | 22.1 | 22.5 | 0.854 | 0.87 | 0.886 |
| L2 | 17.4 | | 18.1 | 0.685 | | 0.713 |
| L3 | 17.25 | 17.5 | 17.75 | 0.679 | 0.689 | 0.699 |
| L4 | 10.3 | 10.7 | 10.9 | 0.406 | 0.421 | 0.429 |
| L7 | 2.65 | | 2.9 | 0.104 | | 0.114 |
| M | 4.25 | 4.55 | 4.85 | 0.167 | 0.179 | 0.191 |
| M1 | 4.73 | 5.08 | 5.43 | 0.186 | 0.200 | 0.214 |
| S | 1.9 | | 2.6 | 0.075 | | 0.102 |
| S1 | 1.9 | | 2.6 | 0.075 | | 0.102 |
| Dia1 | 3.65 | | 3.85 | 0.144 | | 0.152 |

OUTLINE AND MECHANICAL DATA



Multiwatt11 V



Information furnished is believed to be accurate and reliable. However, STMicroelectronics assumes no responsibility for the consequences of use of such information nor for any infringement of patents or other rights of third parties which may result from its use. No license is granted by implication or otherwise under any patent or patent rights of STMicroelectronics. Specification mentioned in this publication are subject to change without notice. This publication supersedes and replaces all information previously supplied. STMicroelectronics products are not authorized for use as critical components in life support devices or systems without express written approval of STMicroelectronics.

The ST logo is a registered trademark of STMicroelectronics
©2002 STMicroelectronics – Printed in Italy – All Rights Reserved

STMicroelectronics GROUP OF COMPANIES
Australia - Brazil - Canada - China - Finland - France - Germany - Hong Kong - India - Israel - Italy - Japan - Malaysia - Malta - Morocco
Singapore - Spain - Sweden - Switzerland - United Kingdom - United States.
<http://www.st.com>



Данный компонент на территории Российской Федерации

Вы можете приобрести в компании MosChip.

Для оперативного оформления запроса Вам необходимо перейти по данной ссылке:

<http://moschip.ru/get-element>

Вы можете разместить у нас заказ для любого Вашего проекта, будь то серийное производство или разработка единичного прибора.

В нашем ассортименте представлены ведущие мировые производители активных и пассивных электронных компонентов.

Нашей специализацией является поставка электронной компонентной базы двойного назначения, продукции таких производителей как XILINX, Intel (ex.ALTERA), Vicor, Microchip, Texas Instruments, Analog Devices, Mini-Circuits, Amphenol, Glenair.

Сотрудничество с глобальными дистрибьюторами электронных компонентов, предоставляет возможность заказывать и получать с международных складов практически любой перечень компонентов в оптимальные для Вас сроки.

На всех этапах разработки и производства наши партнеры могут получить квалифицированную поддержку опытных инженеров.

Система менеджмента качества компании отвечает требованиям в соответствии с ГОСТ Р ИСО 9001, ГОСТ РВ 0015-002 и ЭС РД 009

Офис по работе с юридическими лицами:

105318, г.Москва, ул.Щербаковская д.3, офис 1107, 1118, ДЦ «Щербаковский»

Телефон: +7 495 668-12-70 (многоканальный)

Факс: +7 495 668-12-70 (доб.304)

E-mail: info@moschip.ru

Skype отдела продаж:

moschip.ru

moschip.ru_4

moschip.ru_6

moschip.ru_9