

0.750" DIAMETER FLANGE MOUNT, SHORT TRAVEL



Conical Hat Shown

Standard Characteristics/Ratings:

ELECTRICAL RATINGS:

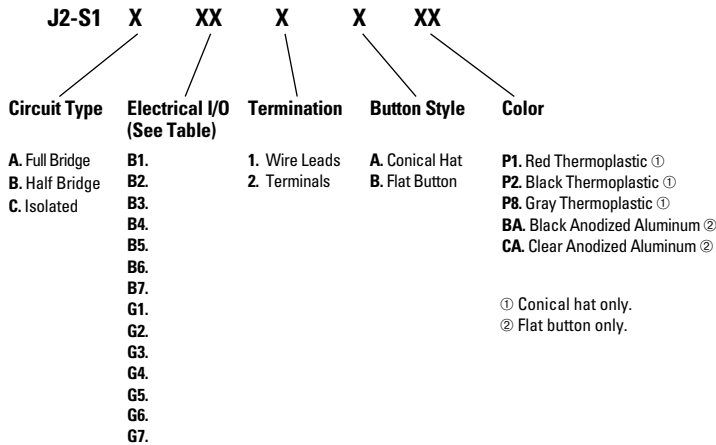
| | |
|--------------------------------------|--|
| Insulation Resistance: | 100MΩ min @ 50VDC |
| Null Temp Coefficient: | +/- 0.04% of full scale per degree C max |
| Hysteresis: | +/- 0.5% of full scale within 1 second after release |
| Sensitivity Temp Coefficient: | +/- 0.2% full scale per degree C |
| Resolution: | Infinite |
| Seal: | Enclosure dusttight per MIL-PRF-8805 Design 2 |
| Operating Force: | 3.0 lbs. |
| Operating Temp Range: | -40°C to +71°C |
| Storage Temp Range: | -55°C to +85°C |
| Travel: | To mechanical stop 0.05 inches max |

MATERIALS:

| | |
|-------------------|--|
| Button: | Thermoplastic or anodized aluminum |
| Terminals: | Tin plate over copper plate over brass |
| Wire: | MIL-W-16878/4, 12 inches min, 24 AWG |
| Hardware: | None provided |



J2-S1 PART NUMBER CODE



| EXCITATION VOLTAGE TABLE | | | | | | |
|--------------------------|--------------------------------|--|--------------------------------|---|--|---|
| Circuit Configuration | Excitation Voltage (Units VDC) | Sensitivity Until Stop (Units VDC/lb. +/- 20%) | Max Output at Stop (Units VDC) | Null Output at 25°C Bipolar (Units VDC) | Null Output at 25°C Supply to Ground (Units VDC) | Full Scale Travel Cycles (Units x 10 ⁶) |
| B1 | +/- 12.0 | +/- 0.45 | +/- 1.40 | +/- 0.12 | | 0.2 |
| G1 | +24.0 | +/- 0.45 | +/- 1.40 | | 12.0 +/- 0.12 | 0.2 |
| B2 | +/- 10.0 | +/- 0.45 | +/- 1.40 | +/- 0.12 | | 0.2 |
| G2 | +20.0 | +/- 0.45 | +/- 1.40 | | 10.0 +/- 0.12 | 0.2 |
| B3 | +/- 7.5 | +/- 0.45 | +/- 1.40 | +/- 0.10 | | 0.3 |
| G3 | +15.0 | +/- 0.45 | +/- 1.40 | | 7.5 +/- 0.10 | 0.3 |
| B4 | +/- 6.0 | +/- 0.45 | +/- 1.40 | +/- 0.10 | | 0.2 |
| G4 | +12.0 | +/- 0.45 | +/- 1.40 | | 6.0 +/- 0.10 | 0.2 |
| B5 | +/- 6.0 | +/- 0.33 | +/- 1.03 | +/- 0.06 | | 1.0 |
| G5 | +12.0 | +/- 0.33 | +/- 1.03 | | 6.0 +/- 0.06 | 1.0 |
| B6 | +/- 5.0 | +/- 0.33 | +/- 1.03 | +/- 0.05 | | 1.0 |
| G6 | +10.0 | +/- 0.33 | +/- 1.03 | | 5.0 +/- 0.05 | 1.0 |
| B7 | +/- 5.0 | +/- 0.25 | +/- 0.78 | +/- 0.05 | | 2.0 |
| G7 | +10.0 | +/- 0.25 | +/- 0.78 | | 5.0 +/- 0.05 | 2.0 |

TRANSDUCER

0.655" DIAMETER FLANGE MOUNT, SHORT TRAVEL



Flat Button Shown

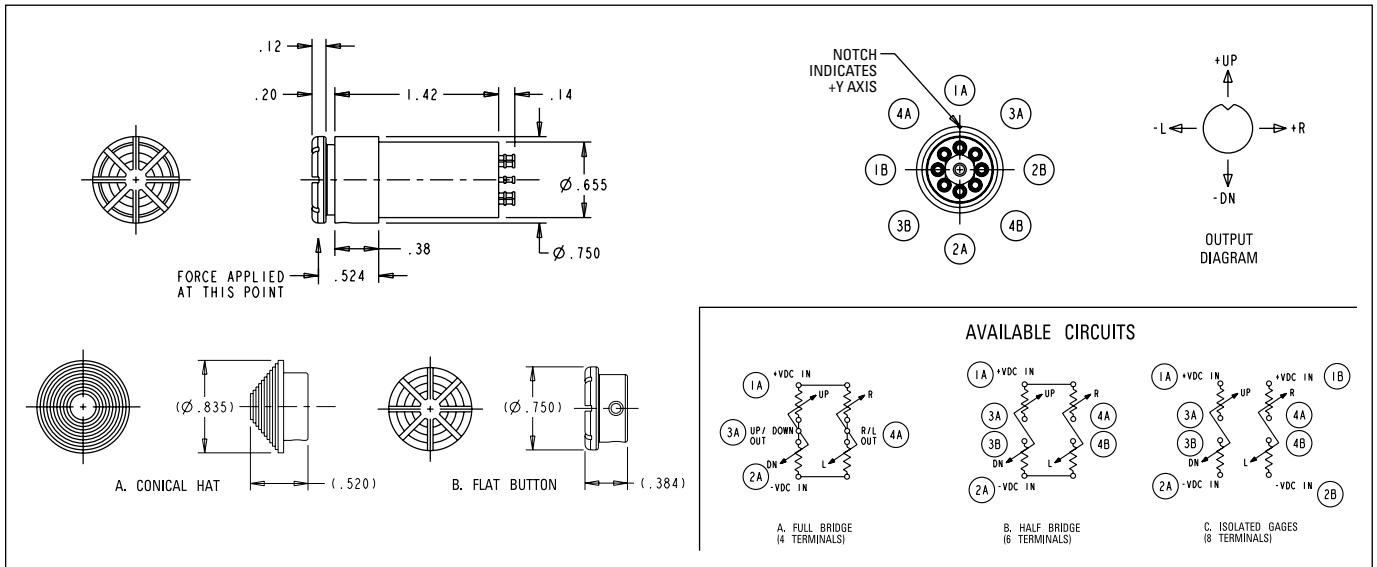
Standard Characteristics/Ratings:

ELECTRICAL RATINGS:

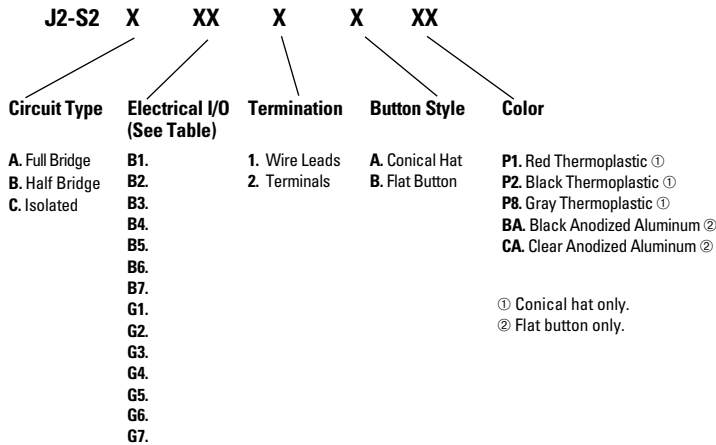
| | |
|--------------------------------------|--|
| Insulation Resistance: | 100MΩ min @ 50VDC |
| Null Temp Coefficient: | +/- 0.04% of full scale per degree C max |
| Hysteresis: | +/- 0.5% of full scale within 1 second after release |
| Sensitivity Temp Coefficient: | +/- 0.2% full scale per degree C |
| Resolution: | Infinite |
| Seal: | Enclosure dusttight per MIL-PRF-8805 Design 2 |
| Operating Force: | 3.0 lbs. |
| Operating Temp Range: | -40°C to +71°C |
| Storage Temp Range: | -55°C to +85°C |
| Travel: | To mechanical stop 0.05 inches max |

MATERIALS:

| | |
|-------------------|--|
| Button: | Thermoplastic or anodized aluminum |
| Terminals: | Tin plate over copper plate over brass |
| Wire: | MIL-W-16878/4, 12 inches min, 24 AWG |
| Hardware: | None provided |



J2-S2 PART NUMBER CODE

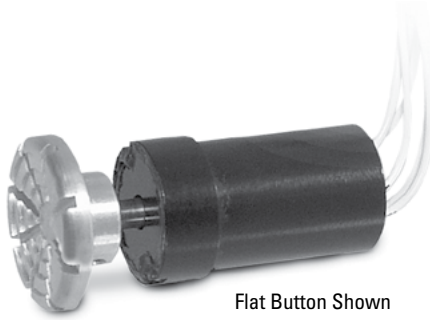


EXCITATION VOLTAGE TABLE

| Circuit Configuration | Excitation Voltage (Units VDC) | Sensitivity Until Stop (Units VDC/lb. +/- 20%) | Max Output at Stop (Units VDC) | Null Output at 25°C Bipolar (Units VDC) | Null Output at 25°C Supply to Ground (Units VDC) | Full Scale Travel Cycles (Units x 10 ⁶) |
|-----------------------|--------------------------------|--|--------------------------------|---|--|---|
| B1 | +/- 12.0 | +/- 0.45 | +/- 1.40 | +/- 0.12 | | 0.2 |
| G1 | + 24.0 | +/- 0.45 | +/- 1.40 | | 12.0 +/- 0.12 | 0.2 |
| B2 | +/- 10.0 | +/- 0.45 | +/- 1.40 | +/- 0.12 | | 0.2 |
| G2 | + 20.0 | +/- 0.45 | +/- 1.40 | | 10.0 +/- 0.12 | 0.2 |
| B3 | +/- 7.5 | +/- 0.45 | +/- 1.40 | +/- 0.10 | | 0.3 |
| G3 | + 15.0 | +/- 0.45 | +/- 1.40 | | 7.5 +/- 0.10 | 0.3 |
| B4 | +/- 6.0 | +/- 0.45 | +/- 1.40 | +/- 0.10 | | 0.2 |
| G4 | + 12.0 | +/- 0.45 | +/- 1.40 | | 6.0 +/- 0.10 | 0.2 |
| B5 | +/- 6.0 | +/- 0.33 | +/- 1.03 | +/- 0.06 | | 1.0 |
| G5 | + 12.0 | +/- 0.33 | +/- 1.03 | | 6.0 +/- 0.06 | 1.0 |
| B6 | +/- 5.0 | +/- 0.33 | +/- 1.03 | +/- 0.05 | | 1.0 |
| G6 | + 10.0 | +/- 0.33 | +/- 1.03 | | 5.0 +/- 0.05 | 1.0 |
| B7 | +/- 5.0 | +/- 0.25 | +/- 0.78 | +/- 0.05 | | 2.0 |
| G7 | + 10.0 | +/- 0.25 | +/- 0.78 | | 5.0 +/- 0.05 | 2.0 |

TRANSDUCER

0.560" DIAMETER FLANGE MOUNT, SHORT TRAVEL



Flat Button Shown

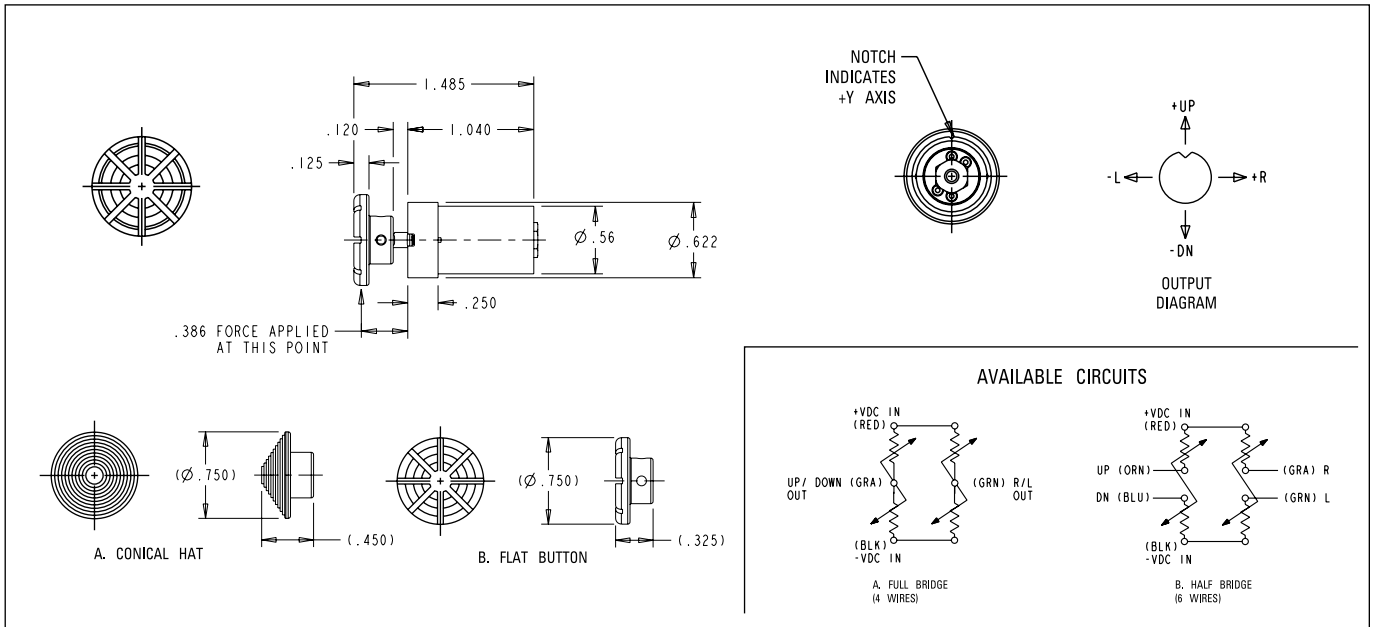
Standard Characteristics/Ratings:

ELECTRICAL RATINGS:

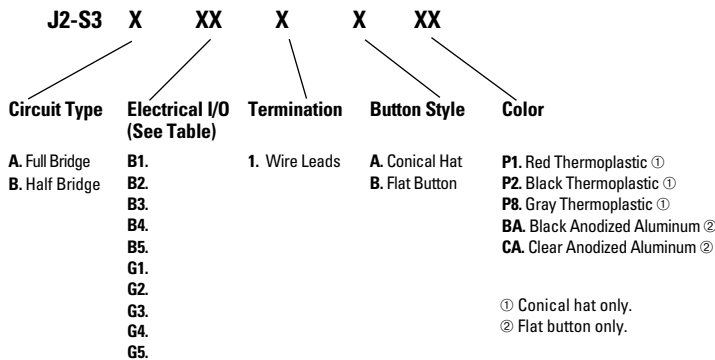
| | |
|--------------------------------------|--|
| Insulation Resistance: | 100MΩ min @ 50VDC |
| Null Temp Coefficient: | +/- 0.04% of full scale per degree C max |
| Hysteresis: | +/- 0.5% of full scale within 1 second after release |
| Sensitivity Temp Coefficient: | +/- 0.2% full scale per degree C |
| Resolution: | Infinite |
| Seal: | Enclosure dusttight per MIL-PRF-8805 Design 2 |
| Operating Force: | 3.0 lbs. |
| Operating Temp Range: | -40°C to +71°C |
| Storage Temp Range: | -55°C to +85°C |
| Travel: | To mechanical stop 0.05 inches max |

MATERIALS:

| | |
|------------------|--|
| Wire: | MIL-W-16878/4, 12 inches min 24 AWG |
| Button: | Thermoplastic or anodized aluminum |
| Hardware: | None provided |



J2-S3 PART NUMBER CODE



EXCITATION VOLTAGE TABLE

| Circuit Configuration | Excitation Voltage (Units VDC) | Sensitivity Until Stop (Units VDC/lb. +/- 20%) | Max Output at Stop (Units VDC) | Null Output at 25°C Bipolar (Units VDC) | Null Output at 25°C Supply to Ground (Units VDC) | Full Scale Travel Cycles (Units x 10 ⁶) |
|-----------------------|--------------------------------|--|--------------------------------|---|--|---|
| B1 | +/- 7.5 | +/- 0.45 | +/- 1.40 | +/- 0.10 | | 0.3 |
| G1 | + 15.0 | +/- 0.45 | +/- 1.40 | | 7.5 +/- 0.10 | 0.3 |
| B2 | +/- 6.0 | +/- 0.45 | +/- 1.40 | +/- 0.10 | | 0.2 |
| G2 | + 12.0 | +/- 0.45 | +/- 1.40 | | 6.0 +/- 0.10 | 0.2 |
| B3 | +/- 6.0 | +/- 0.33 | +/- 1.03 | +/- 0.06 | | 1.0 |
| G3 | + 12.0 | +/- 0.33 | +/- 1.03 | | 6.0 +/- 0.06 | 1.0 |
| B4 | +/- 5.0 | +/- 0.33 | +/- 1.03 | +/- 0.05 | | 1.0 |
| G4 | + 10.0 | +/- 0.33 | +/- 1.03 | | 5.0 +/- 0.05 | 1.0 |
| B5 | +/- 5.0 | +/- 0.25 | +/- 0.78 | +/- 0.05 | | 2.0 |
| G5 | + 10.0 | +/- 0.25 | +/- 0.78 | | 5.0 +/- 0.05 | 2.0 |

Данный компонент на территории Российской Федерации

Вы можете приобрести в компании MosChip.

Для оперативного оформления запроса Вам необходимо перейти по данной ссылке:

<http://moschip.ru/get-element>

Вы можете разместить у нас заказ для любого Вашего проекта, будь то серийное производство или разработка единичного прибора.

В нашем ассортименте представлены ведущие мировые производители активных и пассивных электронных компонентов.

Нашей специализацией является поставка электронной компонентной базы двойного назначения, продукции таких производителей как XILINX, Intel (ex.ALTERA), Vicor, Microchip, Texas Instruments, Analog Devices, Mini-Circuits, Amphenol, Glenair.

Сотрудничество с глобальными дистрибьюторами электронных компонентов, предоставляет возможность заказывать и получать с международных складов практически любой перечень компонентов в оптимальные для Вас сроки.

На всех этапах разработки и производства наши партнеры могут получить квалифицированную поддержку опытных инженеров.

Система менеджмента качества компании отвечает требованиям в соответствии с ГОСТ Р ИСО 9001, ГОСТ РВ 0015-002 и ЭС РД 009

Офис по работе с юридическими лицами:

105318, г.Москва, ул.Щербаковская д.3, офис 1107, 1118, ДЦ «Щербаковский»

Телефон: +7 495 668-12-70 (многоканальный)

Факс: +7 495 668-12-70 (доб.304)

E-mail: info@moschip.ru

Skype отдела продаж:

moschip.ru

moschip.ru_4

moschip.ru_6

moschip.ru_9