



PRODUCT DATASHEET

Laura series

last update 26/3/2012



Ordering number CX11645
Description CA11645_Laura-SS-RE-tape

Family	Laura	FWHM	(simulated) 12
Type	Assembly	Efficiency	93 %
LED	LUXEON Rebel	cd/lm	-
Color	White	Gerber File	Available
Diameter	21.6 mm		
Height	12.9 mm		
Style	Square		
Optic Material	PMMA		
Holder Material	PC		
Fastening	Tape		
Status	Ready		

Ordering number CX11352
Description CA11352_Laura-RS-RE-tape

Family	Laura	FWHM	7 degrees
Type	Assembly	Efficiency	93 %
LED	LUXEON Rebel	cd/lm	33.500
Color	White	Gerber File	Available
Diameter	21.6 mm		
Height	13.1 mm		
Style	Square		
Optic Material	PMMA		
Holder Material	PC		
Fastening	Tape		
Status	Ready		

Ordering number CX11364
Description CA11364-Laura-O-RE-tape

Family	Laura	FWHM	12+40 degrees
Type	Assembly	Efficiency	92 %
LED	LUXEON Rebel	cd/lm	-
Color	White	Gerber File	Available
Diameter	21.6 mm		
Height	13.1 mm		
Style	Square		
Optic Material	PMMA		
Holder Material	PC		
Fastening	Tape		
Status	Ready		

Ordering number CX11359
Description CA11359-Laura-D-RE-tape

Family	Laura	FWHM	15 degrees
Type	Assembly	Efficiency	90 %
LED	LUXEON Rebel	cd/lm	5.000
Color	White	Gerber File	Available
Diameter	21.6X21.6 mm		
Height	12.9 mm		
Style	Square		
Optic Material	PMMA		
Holder Material	PC		
Fastening	Tape		
Status	Ready		



PRODUCT DATASHEET

Laura series

last update 26/3/2012



Ordering number	CX11354		
Description	CA11354_Laura-M-RE-tape		
Family	Laura	FWHM	28 degrees
Type	Assembly	Efficiency	88 %
LED	LUXEON Rebel	cd/lm	2.700
Color	White	Gerber File	Available
Diameter	21.6 mm		
Height	13.1 mm		
Style	Square		
Optic Material	PMMA		
Holder Material	PC		
Fastening	Tape		
Status	Ready		

Ordering number	CX12568		
Description	CX12568_LAURA-W-WHT		
Family	Laura	FWHM	44 degrees
Type	Assembly	Efficiency	88 %
LED	LUXEON Rebel	cd/lm	-
Color	White	Gerber File	Available
Diameter	21.6 mm		
Height	12.9 mm		
Style	Square		
Optic Material	PMMA		
Holder Material	PC		
Fastening	Tape		
Status	Ready		

Ordering number	CA11768		
Description	CA11768_Laura-WW-RE-tape		
Family	Laura	FWHM	66 degrees
Type	Assembly	Efficiency	93 %
LED	LUXEON Rebel	cd/lm	-
Color	White	Gerber File	Available
Diameter	21.6 mm		
Height	12.9 mm		
Style	Square		
Optic Material	PMMA		
Holder Material	PC		
Fastening	Tape		
Status	Ready		

Ordering number	CX11524		
Description	CA11524_Laura-Refl-W-RE-tape		
Family	Laura	FWHM	68 degrees
Type	Reflector	Efficiency	81 %
LED	LUXEON Rebel	cd/lm	-
Color	White	Gerber File	Available
Diameter	21.6 mm		
Height	12.9 mm		
Style	Square		
Optic Material	PC		
Holder Material	PC		
Fastening	Tape		
Status	Ready		



PRODUCT DATASHEET

Laura series

last update 26/3/2012



NOTE: The typical divergence will be changed by different color, chip size and chip position tolerance. The typical total divergence is the full angle measured where the luminous intensity is half of the peak value.



PRODUCT DATASHEET

Laura series

last update 26/3/2012



GENERAL INFORMATION

- Product series especially designed & optimized for LUXEON Rebel series of LEDs.
- Special care taken to make light distribution as uniform as possible.
- Reflector is made of aluminium coated PC (120 degrees of Celcius / 248 degrees of Fahrenheit) with protective lacquer (110 degrees of Celcius / 230 degrees of Fahrenheit).
- Fastening to heat sink with a PU foam adhesive tape of automotive grade. Please find fastening details by clicking link: http://www.ledil.com/datasheets/DataSheet_TAPE.pdf

NOTE 1: We advise customer to ensure the suitability and sufficiency of the bond in the end product. For example, mechanical stress, vibration and holes on the surface of the circuit board weaken the strength of the tape.

NOTE 2: Assembly to the surface must be made straight, so the tape bonds constant and balanced with fastening surface. Slanted assembly might cause unbalanced bond to the surface. All surfaces where tape is applied must be clean, dry and free from grease and dirt.

If cleaning of PCB surfaces is needed, please follow strictly the cleaning instructions of your LED manufacturer - this is important as cleaning shall under no circumstances damage LEDs or other electronics components on the PCB.

Further note that optical components shall not be cleaned with any chemicals - only micro fiber cloth may be used to remove fingerprints or other traces from handling.

D

C

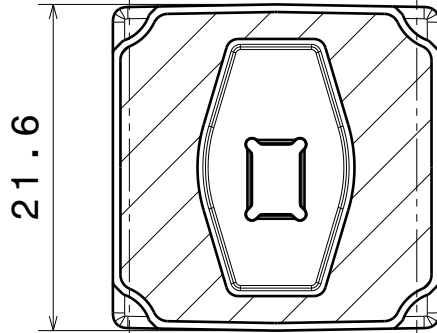
B

A

4

4

Oval-version
beam direction



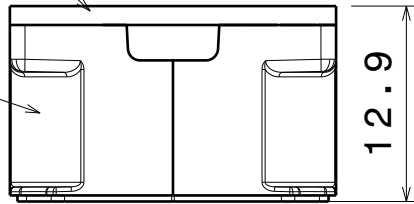
Bottom view

3

3

Optic

Holder



Front view

2

2

Materials
 lens: PMMA
 holder: PC White
 Tape: PU Foam

1

1

This drawing is our property.
 It can't be reproduced
 or communicated without
 our written agreement.



L
T
F
F

e
e
i
i
N
n

d
h

DRAWING TITLE

Assy Datasheet Laura-tape series

DRAWN BY

DATE

p

02.08.2010

CHECKED BY

DATE

s

n

22.07.2010

DESIGNED BY

DATE

hh

21.01.2010

SIZE

A4

DRAWING NUMBER

CA11352

REV

1

SCALE

2:1

WEIGHT (g)

SHEET

1/1

D

A

Данный компонент на территории Российской Федерации

Вы можете приобрести в компании MosChip.

Для оперативного оформления запроса Вам необходимо перейти по данной ссылке:

<http://moschip.ru/get-element>

Вы можете разместить у нас заказ для любого Вашего проекта, будь то серийное производство или разработка единичного прибора.

В нашем ассортименте представлены ведущие мировые производители активных и пассивных электронных компонентов.

Нашей специализацией является поставка электронной компонентной базы двойного назначения, продукции таких производителей как XILINX, Intel (ex.ALTERA), Vicor, Microchip, Texas Instruments, Analog Devices, Mini-Circuits, Amphenol, Glenair.

Сотрудничество с глобальными дистрибьюторами электронных компонентов, предоставляет возможность заказывать и получать с международных складов практически любой перечень компонентов в оптимальные для Вас сроки.

На всех этапах разработки и производства наши партнеры могут получить квалифицированную поддержку опытных инженеров.

Система менеджмента качества компании отвечает требованиям в соответствии с ГОСТ Р ИСО 9001, ГОСТ РВ 0015-002 и ЭС РД 009

Офис по работе с юридическими лицами:

105318, г.Москва, ул.Щербаковская д.3, офис 1107, 1118, ДЦ «Щербаковский»

Телефон: +7 495 668-12-70 (многоканальный)

Факс: +7 495 668-12-70 (доб.304)

E-mail: info@moschip.ru

Skype отдела продаж:

moschip.ru

moschip.ru_4

moschip.ru_6

moschip.ru_9