

## MOUNTING HARDWARE

### WASHERS

| Part Number | Description  | Figure Number | Dimensions (Inches) |        |       |       |       |
|-------------|--|---------------|---------------------|--------|-------|-------|-------|
|             |  |               | A                   | B      | C     | D     | E     |
| M-1018      | Rigid Plastic Washer   | 3             | 5/8"                | .384"  | 1/16" | 1/32" | 1/2"  |
| P-1014-9    | Internal Tooth Lockwasher  | 1             | 1/2"                | 3/8"   | .022" |       |       |
| P-1025      | Internal Tooth Lockwasher  | 1             | 11/16"              | 3/8"   | .035" |       |       |
| P-1060-3    | Internal Tooth Lockwasher  | 1             | 39/64"              | 15/32" | .018" |       |       |
| P-1060-9    | Internal Tooth Lockwasher  | 1             | 39/64"              | 15/32" | .018" |       |       |
| P-1063-9    | Steel Lockring Washer iridite finish over cadmium. Used as non-turn device on Series 16000 Telever Switch and R3000 and R13000 Lev-R-Switches. | 4             | See Drawing         |        |       |       |       |
| P-1475-3    | Internal Tooth Lockwasher, Steel, Cadmium-Plated   | 1             | 13/32"              | 17/64" | .018" |       |       |
| P-1476-1    | Flat Washer - Brass - Nickel-Plated  | 2             | 5/8"                | 15/32" | .020" |       |       |
| P-1617      | Rigid Plastic Washer   | 2             | 5/16"               | .195"  | 1/64" |       |       |
| P-1618      | Swedged Fiber Washer   | 3             | 11/32"              | .193"  | 1/32" |       |       |
| P-1716      | Round Flat Plain Washer  | 2             | 1 1/16"             | .828"  | .031" | 1/64" | .261" |
| P-1834      | Internal Tooth Lockwasher  | 1             | 7/8"                | .650"  | .022" |       |       |
| P-1971      | Internal Tooth Lockwasher  | 1             | 1/2"                | 3/8"   | .022" |       |       |
| P-2061      | Round Flat Plain Washer  | 2             | .406"               | .281"  | .020" |       |       |
| S-1022-1    | Steel Washer Nickel-Plated   | 2             | 5/8"                | 3/8"   | .020" |       |       |
| S-1028      | Rigid Plastic Washer (Brown)   | 2             | 5/8"                | 3/8"   | .031" |       |       |
| S-1029      | Swedged Fiber Washer   | 3             | 5/8"                | 3/8"   | 1/32" |       |       |
| S-1045-1    | Copper Alloy Washer Nickel-Plated  | 2             | 5/8"                | 3/8"   | .020" | 1/32" | 7/16" |
| S-1078      | Swedged Grey Fiber Washer  | 3             | 5/8"                | 3/8"   | 3/64" |       |       |
| S-1564      | Swedged Grey Fiber Washer  | 3             | 7/16"               | 1/4"   | 1/32" | 1/32" | 5/16" |
| S-1790-1    | Steel Washer Nickel-Plated   | 2             | 7/16"               | 1/4"   | .015" | .025" | 5/16" |
| S2207       | Rigid Plastic Washer   | 2             | 7/16"               | 9/32"  | .025" |       |       |
| S-2957      | Brass Washer Nickel-Plated   | 2             | 5/16"               | 13/64" | .010" |       |       |
| S-3727      | Steel Flat Washer Cadmium-Plated   | 2             | 7/8"                | .630"  | 1/32" |       |       |
| S-3997      | Steel Washer Nickel-Plated   | 2             | 23/64"              | 1/4"   | 1/64" |       |       |
| S-4263      | Vulcanized Insulating Washer   | 3             | .495"               | .317"  | .037" | .039" | .370" |

### SCREW AND TERMINAL

|          |  |   |             |  |  |  |  |
|----------|--|---|-------------|--|--|--|--|
| P-1069-5 | Copper alloy solder terminal tinned for use with P-1070 screw below. Copper alloy terminal screws No. 2-64 for MIL-type plugs such as PJ-047, PJ-051 and PJ-055. | 6 | See Drawing |  |  |  |  |
| P-1070   |  | 5 | See Drawing |  |  |  |  |

### NUTS

|          |   |    |             |        |       |                  |  |
|----------|---|----|-------------|--------|-------|------------------|--|
| P-1000   | Copper Alloy Locknut (Natural)                  | 7  | 1/2"        | 3/8"   | 3/32" | (3/8"-32 Thd.)   |  |
| P-1000-1 | Copper Alloy Locknut Nickel-Plated              | 7  | 1/2"        | 3/8"   | 3/32" | (3/8"-32 Thd.)   |  |
| P-1009-1 | Copper Alloy Knurled Nut Nickel-Plated          | 8  | 1/2"        | 3/8"   | 1/16" | (3/8"-32 Thd.)   |  |
| P-1053-1 | Copper Alloy Locknut Nickel-Plated              | 7  | 9/16"       | 15/32" | 1/16" | (15/32"-32 Thd.) |  |
| P-1064-1 | Copper Alloy Locknut Nickel-Plated              | 7  | 9/16"       | 3/8"   | 3/32" | (3/8"-32 Thd.)   |  |
| P-1150-1 | Copper Alloy Locknut Nickel-Plated              | 7  | 3/8"        | 1/4"   | 1/16" | (1/4"-32 Thd.)   |  |
| P-1378-1 | Copper Alloy Knurled Nut Nickel-Plated          | 8  | 3/8"        | 1/4"   | 1/16" | (1/4"-32 Thd.)   |  |
| P-1648   | Steel Locknut Cadmium-Plated                    | 7  | 3/4"        | 5/8"   | 3/32" | (5/8"-27 Thd.)   |  |
| P-1717   | Copper Alloy Locknut Nickel-Plated              | 7  | 5/16"       | 13/16" | 1/8"  | (13/16"-20 Thd.) |  |
| P-1970   | Aluminum Knurled Nut - Black                    | 8  | 1/2"        | 3/8"   | 1/16" | (3/8"-32 Thd.)   |  |
| P-1975   | Copper Alloy Locknut Nickel-Plated              | 7  | 5/16"       | 1/4"   | 1/16" | (1/4"-32 Thd.)   |  |
| P-2060   | Copper Alloy Locknut Nickel-Plated              | 7  | 11/32"      | 9/32"  | 1/16" | (9/32"-32 Thd.)  |  |
| P-2417   | Copper Alloy Decor Nut Satin Chrome             | 11 | .730"       | .344"  | .171" | (15/32"-32 Thd.) |  |
| P-2437   | Copper Alloy Decor Nut Brass Nickel-Plated      | 11 | .740"       | .344"  | .181" | (15/32"-32 Thd.) |  |
| T-1064-1 | Copper Alloy Hex-Shoulder Locknut Nickel-Plated | 9  | See Drawing |        |       |                  |  |
| T-1071-1 | Copper Alloy Knurled Locknut Nickel-Plated      | 8  | 5/8"        | 15/32" | 3/32" | (15/32"-32 Thd.) |  |
| T-2160   | Copper Alloy Knurled Nut Nickel-Plated          | 8  | 13/32"      | 5/16"  | 1/16" | (5/16-32 Thd.)   |  |

### CLAMPS

|        |                 |    |       |       |       |
|--------|-----------------|----|-------|-------|-------|
| P-2380 | Steel "U" Clamp | 12 | .335" | 7/32" | .188" |
| P-2381 | Steel "U" Clamp | 12 | .313" | 7/32" | .188" |

 DIMENSIONS ARE FOR REFERENCE ONLY  $\frac{\text{Inch}}{\text{(mm)}}$ 

NOTE: Contact your Switchcraft Representative for price and delivery.

All products shown in this catalog are covered by Switchcraft's limited lifetime warranty

© Registered trademark of Switchcraft, Inc.

### MOUNTING HARDWARE



Figure 1



Figure 2

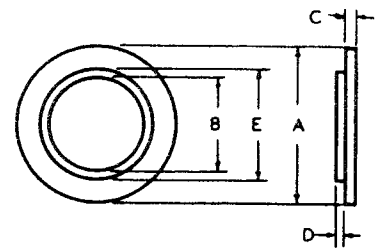


Figure 3



Figure 4

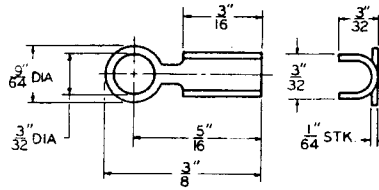


Figure 5

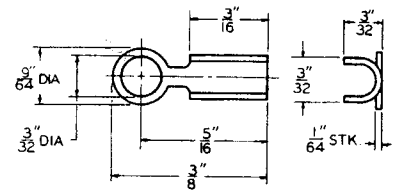


Figure 6



Figure 7

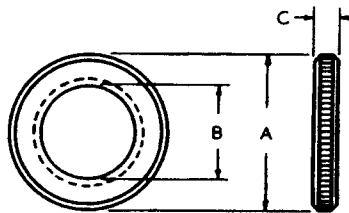


Figure 8

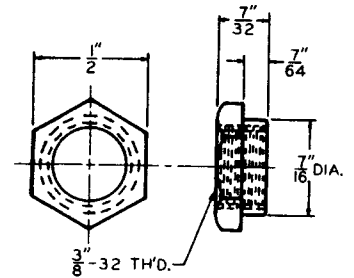


Figure 9

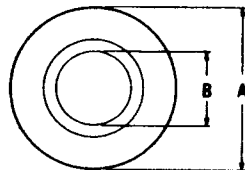


Figure 11



Figure 12

DIMENSIONS ARE FOR REFERENCE ONLY  $\frac{\text{Inch}}{\text{(mm)}}$

NOTE: Contact your Switchcraft Representative for price and delivery.

All products shown in this catalog are covered by Switchcraft's limited lifetime warranty

® Registered trademark of Switchcraft, Inc.

## Данный компонент на территории Российской Федерации

### Вы можете приобрести в компании MosChip.

Для оперативного оформления запроса Вам необходимо перейти по данной ссылке:

<http://moschip.ru/get-element>

Вы можете разместить у нас заказ для любого Вашего проекта, будь то серийное производство или разработка единичного прибора.

В нашем ассортименте представлены ведущие мировые производители активных и пассивных электронных компонентов.

Нашей специализацией является поставка электронной компонентной базы двойного назначения, продукции таких производителей как XILINX, Intel (ex.ALTERA), Vicor, Microchip, Texas Instruments, Analog Devices, Mini-Circuits, Amphenol, Glenair.

Сотрудничество с глобальными дистрибьюторами электронных компонентов, предоставляет возможность заказывать и получать с международных складов практически любой перечень компонентов в оптимальные для Вас сроки.

На всех этапах разработки и производства наши партнеры могут получить квалифицированную поддержку опытных инженеров.

Система менеджмента качества компании отвечает требованиям в соответствии с ГОСТ Р ИСО 9001, ГОСТ РВ 0015-002 и ЭС РД 009

### Офис по работе с юридическими лицами:

105318, г.Москва, ул.Щербаковская д.3, офис 1107, 1118, ДЦ «Щербаковский»

Телефон: +7 495 668-12-70 (многоканальный)

Факс: +7 495 668-12-70 (доб.304)

E-mail: [info@moschip.ru](mailto:info@moschip.ru)

Skype отдела продаж:

moschip.ru

moschip.ru\_4

moschip.ru\_6

moschip.ru\_9