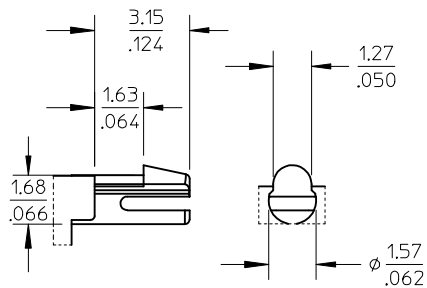
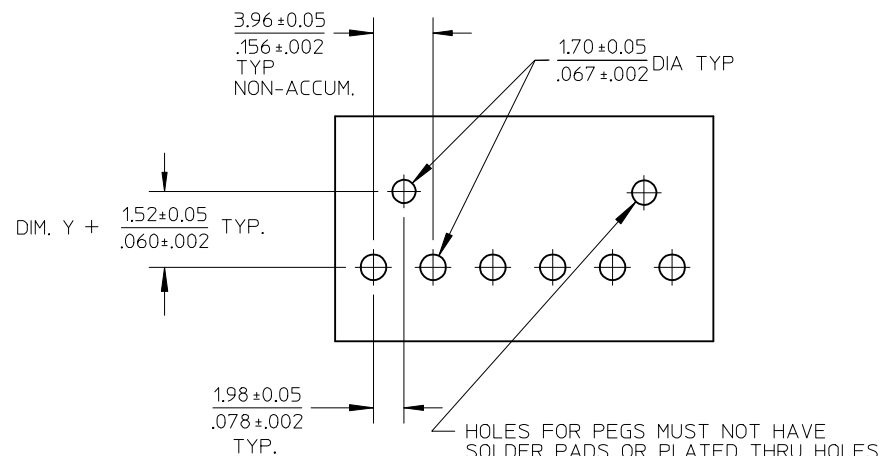


| NO. OF CKTS. | DIM. A | DIM. B | SLOT LOC BETWEEN CKTS |
|--------------|----------------|--------------------------|-----------------------|
| 2 | 7.77 .306 | 3.96±0.05 .156±.002 | NONE |
| 3 | 11.73 .462 | 7.92±0.08 .312±.003 | NONE |
| 4 | 15.70 .618 | 11.89±0.08 .468±.003 | NONE |
| 5 | 19.66 .774 | 15.85±0.10 .624±.004 | NONE |
| 6 | 23.62 .930 | 19.81±0.10 .780±.004 | 3 & 4 |
| 7 | 27.58 1.086 | 23.77±0.10 .936±.004 | 4 & 5 |
| 8 | 31.55 1.242 | 27.74±0.13 1.092±.005 | 4 & 5 |
| 9 | 35.51 1.398 | 31.70±0.13 1.248±.005 | 5 & 6 |
| 10 | 39.47 1.554 | 35.66±0.13 1.404±.005 | 5 & 6 |
| 11 | 43.43 1.710 | 39.62±0.15 1.560±.006 | 6 & 7 |
| 12 | 47.40 1.866 | 43.59±0.15 1.716±.006 | 4 & 5 8 & 9 |

| | | | | | | | | | |
|--|-----------------|---------------------------------------|--------|---------------------------|------------------|---|----------------------|------------------------|--|
| DIMENSION M EC NO: UCP2013-1786 DRWN:MMSTROH 2012/11/05 CHKD:MKIPPER 2012/11/07 APPR:FSM/TH 2012/11/06 | QUALITY SYMBOLS | GENERAL TOLERANCES (UNLESS SPECIFIED) | | DIMENSION STYLE MM/IN | | SCALE 2:1 | DESIGN UNITS INCH | THIRD ANGLE PROJECTION | |
| | ▽=0 | 4 PLACES ± --- | ± --- | DRAWN BY SCHAFFER | DATE 12-12-03 | TITLE FRICITION LOCK HDR. ASSY. .156 BENT SQ PINS W/PEGS RT. ANGLE MOUNT | | | |
| | ▽=0 | 3 PLACES ± --- | ± .010 | CHECKED BY SAMIEC | DATE 12-15-03 | | | | |
| | ▽=0 | 2 PLACES ± 0.25 | ± .015 | APPROVED BY MARGULIS | DATE 12-19-03 | DOCUMENT NO. SD-42892-001 | | SHEET NO. 1 OF * | |
| H2 | REV | ANGULAR ±1/2° | | MATERIAL NO. SEE CHART | | THIS DRAWING CONTAINS INFORMATION THAT IS PROPRIETARY TO MOLEX INCORPORATED AND SHOULD NOT BE USED WITHOUT WRITTEN PERMISSION | | | |
| DRAFT WHERE APPLICABLE MUST REMAIN WITHIN DIMENSIONS | | SIZE A | | | | | | | |



PEG DETAIL



RECOMMENDED PC BOARD HOLE LAYOUT:
COMPONENT SIDE FOR 1.57/.062 THICK PCB

FOR CORRECT ORIENTATION OF PARTS WITH
VOIDS, ELIMINATE CORRESPONDING PCB HOLE.

NOTES:

- MATERIAL: HEADER-GLASS FILLED POLYESTER, 94V-0, MOLDED NATURAL WHITE
PINS: BRASS
- FINISHES: (197) OVERALL REFLOWED MATTE TIN: 0.00152/.000060 MIN.
OVER 0.00127/.000050 MIN. NICKEL OVERALL.
(208) SELECT GOLD: 0.00038/.000015
SELECT TIN: 0.00254/.000100
OVERALL NICKEL UNDERPLATE: 0.00127/.000050
(228) SELECT GOLD: 0.00076/.000030
SELECT TIN: 0.00254/.000100
OVERALL NICKEL UNDERPLATE: 0.00127/.000050
(241) SELECT GOLD: 0.00051/.000020 MIN.
SELECT TIN: 0.00254/.000100 MIN.
OVERALL NICKEL UNDERPLATE: 0.00127/.000050 MIN.
- PRODUCT SPECIFICATION: SEE PS-08-50.
- PACKAGING INFO: SEE TABLES
- SOLDERABILITY: PER SMES-152
- PIN PUSH OUT FORCE: PRIOR TO SOLDERING, A 3 LB MINIMUM FORCE (IN EITHER DIRECTION)
SHALL BE REQUIRED TO PUSH THE PIN OUT OF THE HEADER.
- PARTS ARE STACKABLE END TO END ON (3.96)/.156 CENTERS.
- FOR PART WITHOUT PEGS SEE DWG. NO. SDA-41792.
- THIS PART CONFORMS TO CLASS B REQUIREMENTS OF COSMETIC SPECIFICATION PS-45499-002.
- SLOTS ON BACKWALL ARE BETWEEN CIRCUITS. SEE CHART FOR LOCATION.

| REV | DESCRIPTION | QUALITY SYMBOLS | GENERAL TOLERANCES (UNLESS SPECIFIED) | | DIMENSION STYLE | | SCALE | DESIGN UNITS | THIRD ANGLE PROJECTION | | |
|-----|--|-----------------|--|-----------|--|-------------|----------|--|------------------------|--|--|
| | | | mm | INCH | MM/IN | 2:1 | INCH | | | | |
| H2 | SEE SHEET 1 EC NO: UCP2013-1786 DRWN:MMSTROH 2012/11/05 CHKD:MKIPPER 2012/11/07 APPR:FSMITH 2012/11/06 | | 4 PLACES | ± --- | ± --- | DRAWN BY | DATE | TITLE FRICTION LOCK HDR. ASSY. .156 BENT SQ PINS W/PEGS RT. ANGLE MOUNT | | | |
| | | | 3 PLACES | ± --- | ± .010 | SCHAFFER | 12-12-03 | | | | |
| | | | 2 PLACES | ± 0.25 | ± .015 | CHECKED BY | DATE | DOCUMENT NO. SD-42892-001 | | | |
| | | | 1 PLACE | ± 0.38 | ± --- | SAMIEC | 12-15-03 | | | | |
| | | | 0 PLACE | ± | ± | APPROVED BY | DATE | SHEET NO. 2 OF * | | | |
| | | | | | | MARGULIS | 12-19-03 | | | | |
| | | | ANGULAR ± 1/2° | | MATERIAL NO. | | | | | | |
| | | | DRAFT WHERE APPLICABLE MUST REMAIN WITHIN DIMENSIONS | | SEE CHART | | | | | | |
| | | | | SIZE A | THIS DRAWING CONTAINS INFORMATION THAT IS PROPRIETARY TO MOLEX INCORPORATED AND SHOULD NOT BE USED WITHOUT WRITTEN PERMISSION | | | | | | |

| OPTIONS | Group | A-42892-0002/0018 | Group | A-42892-0080/0096 | Group | A-42892-0097/0113 | Group | A-42892-0019/0035 |
|---------|--------------|-------------------|--------------|-------------------|--------------|-------------------|--------------|-------------------|
| | Header No: | 41790-0070/0086 | Header No: | 41790-0070/0086 | Header No: | 41790-0070/0086 | Header No: | 41790-0070/0086 |
| | Pin No: | 43294-0455 | Pin No: | 43294-0452 | Pin No: | 43290-0453 | Pin No: | 43294-0456 |
| | Plating: | 197 | Plating: | 208 | Plating: | 228 | Plating: | 241 |
| | Pin Length L | 24.89/ .980 | Pin Length L | 24.89/ .980 | Pin Length L | 24.89/ .980 | Pin Length L | 24.89/ .980 |
| | Mating M | 11.43/ .450 | Mating M | 11.43/ .450 | Mating M | 11.43/ .450 | Mating M | 11.43/ .450 |
| | Gold Loc G | N/A | Gold Loc G | 6.86/ .270 | Gold Loc G | 6.86/ .270 | Gold Loc G | 6.85/ .270 |
| | Dim. Y | 2.82/ .111 | Dim. Y | 2.82/ .111 | Dim. Y | 2.82/ .111 | Dim. Y | 2.82/ .111 |
| | PC Tail P | 3.30/ .130 | PC Tail P | 3.30/ .130 | PC Tail P | 3.30/ .130 | PC Tail P | 3.30/ .130 |
| | Tin Loc T | OVERALL | Tin Loc T | 4.06/ .160 | Tin Loc T | 4.06/ .160 | Tin Loc T | 4.06/ .160 |
| | Voided Ckts | NONE | Voided Ckts | NONE | Voided CKts | NONE | Voided Ckts | NONE |
| | Pack Per | PK-42492-002 | Pack Per | PK-42492-002 | Pack Per | PK-42492-002 | Pack Per | PK-42492-002 |
| Ckts | Material No | Engineer Number | Material No | Engineer Number | Material No | Engineer Number | Material No | Engineer Number |
| 2 | 26-60-7020 | A-42892-0002 | 42892-0080 | A-42892-0080 | 42892-0097 | A-42892-0097 | 26-60-7021 | A-42892-0019 |
| 3 | 26-60-7030 | A-42892-0003 | 42892-0081 | A-42892-0081 | 42892-0098 | A-42892-0098 | 26-60-7031 | A-42892-0020 |
| 4 | 26-60-7040 | A-42892-0004 | 42892-0082 | A-42892-0082 | 42892-0099 | A-42892-0099 | 26-60-7041 | A-42892-0021 |
| 5 | 26-60-7050 | A-42892-0005 | 42892-0083 | A-42892-0083 | 42892-0100 | A-42892-0100 | 26-60-7051 | A-42892-0022 |
| 6 | 26-60-7060 | A-42892-0006 | 42892-0084 | A-42892-0084 | 42892-0101 | A-42892-0101 | 26-60-7061 | A-42892-0023 |
| 7 | 26-60-7070 | A-42892-0007 | 42892-0085 | A-42892-0085 | 42892-0102 | A-42892-0102 | 26-60-7071 | A-42892-0024 |
| 8 | 26-60-7080 | A-42892-0008 | 42892-0086 | A-42892-0086 | 42892-0103 | A-42892-0103 | 26-60-7081 | A-42892-0025 |
| 9 | 26-60-7090 | A-42892-0009 | 42892-0087 | A-42892-0087 | 42892-0104 | A-42892-0104 | 26-60-7091 | A-42892-0026 |
| 10 | 26-60-7100 | A-42892-0010 | 42892-0088 | A-42892-0088 | 42892-0105 | A-42892-0105 | 26-60-7101 | A-42892-0027 |
| 11 | 26-60-7110 | A-42892-0011 | 42892-0089 | A-42892-0089 | 42892-0106 | A-42892-0106 | 26-60-7111 | A-42892-0028 |
| 12 | 26-60-7120 | A-42892-0012 | 42892-0090 | A-42892-0090 | 42892-0107 | A-42892-0107 | 26-60-7121 | A-42892-0029 |

| | | | |
|---|--|---|-------------------------------|
| REV: H1 | ECR/ECN INFORMATION | TITLE: FRICITION LOCK HDR. ASSY. .156 BENT SQ PINS W/PEGS RT. ANGLE MOUNT | SHEET No. |
| | EC NO: UCP2012-2562 | | - 3 - |
| | DATE 3/2/2012 | | |
| DOCUMENT NUMBER: SD-42892-001 | CREATED / REVISED BY: AELHAG | CHECKED BY: MKIPPER | APPROVED BY: FSMITH |

| | | | | | | | | |
|---------|--------------|-------------------|--------------|-------------------|--------------|-------------------|--------------|--------------------|
| OPTIONS | Group | A-42892-0036/0052 | Group | A-42892-0053/0067 | Group | A-42892-0068/0079 | Group | A-42892-0114/0118 |
| | Header No: | 41790-0070/0086 | Header No: | 41790-0070/0086 | Header No: | 41790-0070/0086 | Header No: | 41790-0070/0086 |
| | Pin No: | 43294-0455 | Pin No: | 43294-0455 | Pin No: | 43294-0455 | Pin No: | 43294-0455 |
| | Plating: | 197 | Plating: | 197 | Plating: | 197 | Plating: | 197 |
| | Pin Length L | 24.89/ .980 | Pin Length L | 24.89/ .980 | Pin Length L | 24.89/ .980 | Pin Length L | 24.89/ .980 |
| | Mating M | 11.43/ .450 | Mating M | 11.43/ .450 | Mating M | 11.43/ .450 | Mating M | 11.43/ .450 |
| | Gold Loc G | N/A | Gold Loc G | N/A | Gold Loc G | N/A | Gold Loc G | N/A |
| | Dim. Y | 2.82/ .111 | Dim. Y | 2.82/ .111 | Dim. Y | 2.82/ .111 | Dim. Y | 2.82/ .111 |
| | PC Tail P | 3.30/ .130 | PC Tail P | 3.30/ .130 | PC Tail P | 3.30/ .130 | PC Tail P | 3.30/ .130 |
| | Tin Loc T | OVERALL | Tin Loc T | OVERALL | Tin Loc T | OVERALL | Tin Loc T | OVERALL |
| | Voided Ckts | 2 | Voided Ckts | 4 | Voided CKts | 7 | Voided Ckts | 2, 4, 6, 8, 10, 14 |
| | Pack Per | PK-42492-002 | Pack Per | PK-42492-002 | Pack Per | PK-42492-002 | Pack Per | PK-42492-002 |
| Ckts | Material No | Engineer Number | Material No | Engineer Number | Material No | Engineer Number | Material No | Engineer Number |
| 2 | 26-62-7020 | A-42892-0036 | | | | | | |
| 3 | 26-62-7030 | A-42892-0037 | | | | | | |
| 4 | 26-62-7040 | A-42892-0038 | 26-62-7041 | A-42892-0053 | | | | |
| 5 | 26-62-7050 | A-42892-0039 | 26-62-7051 | A-42892-0054 | | | | |
| 6 | 26-62-7060 | A-42892-0040 | 26-62-7061 | A-42892-0055 | | | | |
| 7 | 26-62-7070 | A-42892-0041 | 26-62-7071 | A-42892-0056 | 26-62-7072 | A-42892-0068 | | |
| 8 | 26-62-7080 | A-42892-0042 | 26-62-7081 | A-42892-0057 | 26-62-7082 | A-42892-0069 | | |
| 9 | 26-62-7090 | A-42892-0043 | 26-62-7091 | A-42892-0058 | 26-62-7092 | A-42892-0070 | | |
| 10 | 26-62-7100 | A-42892-0044 | 26-62-7101 | A-42892-0059 | 26-62-7102 | A-42892-0071 | | |
| 11 | 26-62-7110 | A-42892-0045 | 26-62-7111 | A-42892-0060 | 26-62-7112 | A-42892-0072 | | |
| 12 | 26-62-7120 | A-42892-0046 | 26-62-7121 | A-42892-0061 | 26-62-7122 | A-42892-0073 | | |

| | | | | |
|------------------------------|---|---|---|---|
| REV: H1 | <u>ECR/ECN INFORMATION</u> EC NO: UCP2012-2562 DATE 3/2/2012 | <u>TITLE:</u> <p style="text-align: center;">FRICITION LOCK HDR. ASSY. .156 BENT SQ PINS W/PEGS RT. ANGLE MOUNT</p> | <u>SHEET No.</u> <p style="text-align: center;">- 4 -</p> | |
| | <u>DOCUMENT NUMBER:</u> <p style="text-align: center;">SD-42892-001</p> | <u>CREATED / REVISED BY:</u> <p style="text-align: center;">AELHAG</p> | <u>CHECKED BY:</u> <p style="text-align: center;">MKIPPER</p> | <u>APPROVED BY:</u> <p style="text-align: center;">FSMITH</p> |

| | | | | | | | | |
|---------|--------------|-------------------|--------------|-------------------|--------------|-----------------|--------------|-----------------|
| OPTIONS | Group | A-42892-0119/0133 | Group | A-42892-0134/0144 | Group | | Group | |
| | Header No: | 41790-0070/0086 | Header No: | 41790-0076/0086 | Header No: | | Header No: | |
| | Pin No: | 43294-0455 | Pin No: | 43294-0455 | Pin No: | | Pin No: | |
| | Plating: | 197 | Plating: | 197 | Plating: | | Plating: | |
| | Pin Length L | 24.89/ .980 | Pin Length L | 24.89/ .980 | Pin Length L | | Pin Length L | |
| | Mating M | 11.43/ .450 | Mating M | 11.43/ .450 | Mating M | | Mating M | |
| | Gold Loc G | N/A | Gold Loc G | N/A | Gold Loc G | | Gold Loc G | |
| | Dim. Y | 2.82/ .111 | Dim. Y | 2.82/ .111 | Dim. Y | | Dim. Y | |
| | PC Tail P | 3.30/ .130 | PC Tail P | 3.30/ .130 | PC Tail P | | PC Tail P | |
| | Tin Loc T | OVERALL | Tin Loc T | OVERALL | Tin Loc T | | Tin Loc T | |
| | Voided Ckts | 2, 4 | Voided Ckts | 2,4,6,8 | Voided CKts | | Voided Ckts | |
| | Pack Per | PK-42492-002 | Pack Per | PK-42492-002 | Pack Per | | Pack Per | |
| Ckts | Material No | Engineer Number | Material No | Engineer Number | Material No | Engineer Number | Material No | Engineer Number |
| 2 | | | | | | | | |
| 3 | | | | | | | | |
| 4 | 42892-0119 | A-42892-0119 | | | | | | |
| 5 | 42892-0120 | A-42892-0120 | | | | | | |
| 6 | 42892-0121 | A-42892-0121 | | | | | | |
| 7 | 42892-0122 | A-42892-0122 | | | | | | |
| 8 | 42892-0123 | A-42892-0123 | 42892-0134 | A-42892-0134 | | | | |
| 9 | 42892-0124 | A-42892-0124 | 42892-0135 | A-42892-0135 | | | | |
| 10 | 42892-0125 | A-42892-0125 | 42892-0136 | A-42892-0136 | | | | |
| 11 | 42892-0126 | A-42892-0126 | 42892-0137 | A-42892-0137 | | | | |
| 12 | 42892-0127 | A-42892-0127 | 42892-0138 | A-42892-0138 | | | | |

| | | | | | |
|---------------------|------|----------------------------|----------------|---|--------------|
| H1 | REV: | ECR/ECN INFORMATION | TITLE: | FRICITION LOCK HDR. ASSY. .156 BENT SQ PINS W/PEGS RT. ANGLE MOUNT | SHEET No. |
| | | EC NO: UCP2012-2562 | | | - 5 - |
| | | DATE 3/2/2012 | | | |
| DOCUMENT NUMBER: | | CREATED / REVISED BY: | CHECKED BY: | APPROVED BY: | |
| SD-42892-001 | | AELHAG | MKIPPER | FSMITH | |

Данный компонент на территории Российской Федерации

Вы можете приобрести в компании MosChip.

Для оперативного оформления запроса Вам необходимо перейти по данной ссылке:

<http://moschip.ru/get-element>

Вы можете разместить у нас заказ для любого Вашего проекта, будь то серийное производство или разработка единичного прибора.

В нашем ассортименте представлены ведущие мировые производители активных и пассивных электронных компонентов.

Нашей специализацией является поставка электронной компонентной базы двойного назначения, продукции таких производителей как XILINX, Intel (ex.ALTERA), Vicor, Microchip, Texas Instruments, Analog Devices, Mini-Circuits, Amphenol, Glenair.

Сотрудничество с глобальными дистрибьюторами электронных компонентов, предоставляет возможность заказывать и получать с международных складов практически любой перечень компонентов в оптимальные для Вас сроки.

На всех этапах разработки и производства наши партнеры могут получить квалифицированную поддержку опытных инженеров.

Система менеджмента качества компании отвечает требованиям в соответствии с ГОСТ Р ИСО 9001, ГОСТ РВ 0015-002 и ЭС РД 009

Офис по работе с юридическими лицами:

105318, г.Москва, ул.Щербаковская д.3, офис 1107, 1118, ДЦ «Щербаковский»

Телефон: +7 495 668-12-70 (многоканальный)

Факс: +7 495 668-12-70 (доб.304)

E-mail: info@moschip.ru

Skype отдела продаж:

moschip.ru

moschip.ru_4

moschip.ru_6

moschip.ru_9