

Distribution Unit with 1 IEC Appliance Inlet C14 or Power Cord, 4 IEC Appliance Outlets F and Extra Components



4740.6X00



4740.3X00



Stripbloc 4740 with cable



Description

- Stand alone module
- 2 - 5 Functions:
 - Appliance Inlet Protection class I, Connector shuttered
- Line Switch
- Fuseholder with neon indicator
- Version with line filter 6A

Technical Data

Ratings IEC	10A / 250VAC; 50Hz
Ratings UL/CSA	15A / 250VAC; 60Hz
Dielectric Strength	> 2.5kVAC between L-N > 2.5kVAC between L/N-PE (1 min/50Hz)
Allowable Operation Temp.	-25 °C to 70 °C
Protection Class	Suitable for appliances with protection class I acc. to IEC 61140
Material: Housing	Thermoplastic, black, UL 94V-0

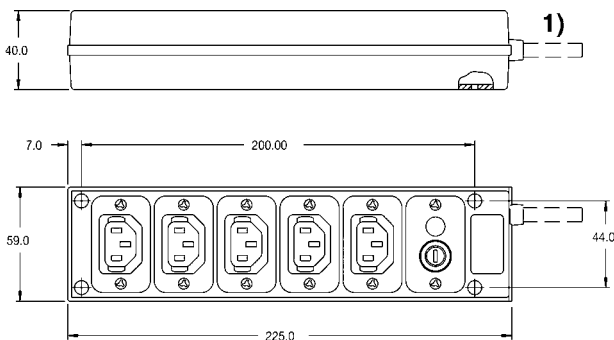
Weblinks

[pdf-datasheet](#), [html-datasheet](#), [General Product Information](#), [Approvals](#), [CE declaration of conformity](#), [RoHS](#), [CHINA-RoHS](#), [Mating Connectors](#), [e-Shop](#), [SCHURTER-Stock-Check](#), [Distributor-Stock-Check](#), [CAD-Drawings](#), [Accessories](#), [Detailed request for product](#)

Appliance Inlet / Appliance Outlet	C14 acc. to IEC 60320, / F acc. to IEC 60320, UL 498 CSA C22.2 no. 42 (for cold conditions) pin-temperature 70 °C, 10A, Protection Class I
Fuseholder	1-pole, acc. to IEC 60127-6, for fuse-links 5 x 20mm
Power Acceptance @ Ta > 23°C	Admissible power acceptance at higher ambient temperature see derating curves
Line Switch	Rocker switch, illuminated, acc. to IEC 61058-1 Technical Details

Dimensions

Stripbloc 4740.3X00



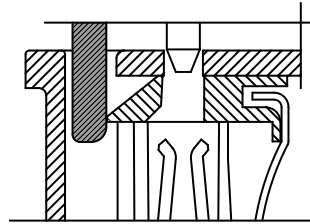
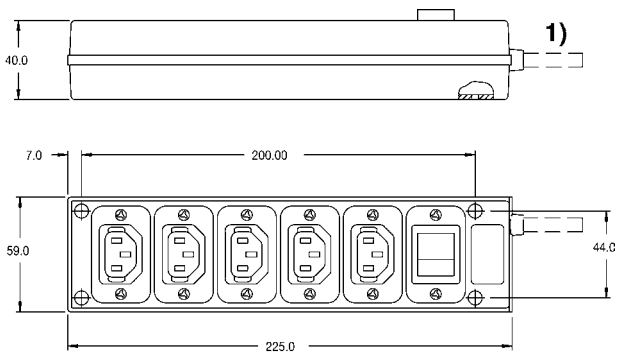
1) Version with plug and cable, see variants
Mounting holes for 3 mm screws

Stripbloc 4740.4X00

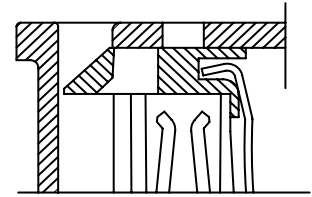


1) Version with plug and cable, see variants
Mounting holes for 3 mm screws

Stripbloc 4740.6X00



Shutter operation:
shutters opened by plug insertion

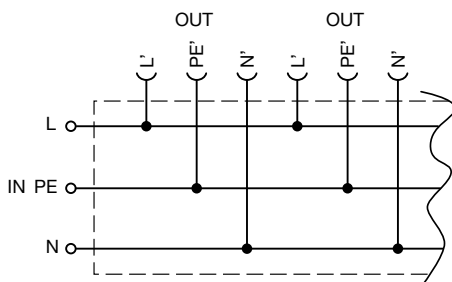


Shutter operation:
shutters closed when plug is removed

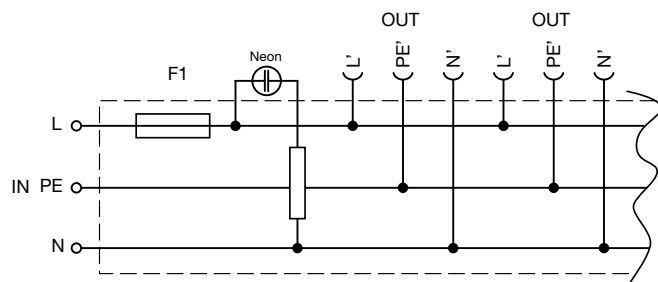
1) Version with plug and cable, see variants
Mounting holes for 3 mm screws

Diagrams

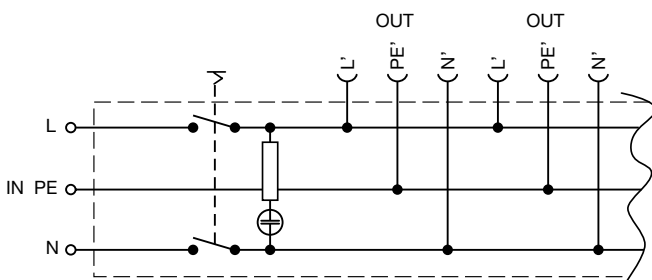
Distribution unit with 6 outlets



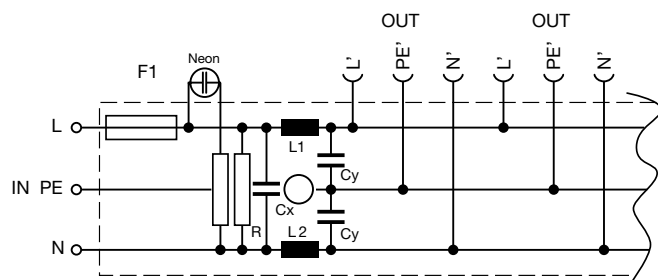
Distribution unit with 5 outlets, fuseholder and neon indication



Distribution unit with 5 outlets and rocker switch illuminated



Distribution unit with 5 outlets, fuseholder, neon indication and filter



Attenuation loss

Standard version

- - - differential mode _____ common mode

**Variants**

Connector	Fuseholder	Line Switch	Neon indication	Terminal	cable	Order Number
6	-	-	●	-	inlet	4740.4000
6	-	-	●	Continental Europe CEE7/VII (Schuko), 10A	2 m cable	4740.4600
6	-	-	●	United Kindom BS 1363 A, 10A	2 m cable	4740.4300
5	-	2-pole	●	-	inlet	4740.6000
5	-	2-pole	●	Continental Europe CEE7/VII (Schuko), 10A	2 m cable	4740.6600
5	-	2-pole	●	United Kindom BS 1363 A, 10A	2 m cable	4740.6300
5	1-pole	-	●	-	inlet	4740.3000
5	1-pole	-	●	Continental Europe CEE7/VII (Schuko), 10A	2 m cable	4740.3600
5	1-pole	-	●	IEC/EN 60320-2-2/E, 10A	2 m cable	4740.3800
5	1-pole	-	●	United Kindom BS 1363 A, 10A	2 m cable	4740.3300
5	1-pole	-	●	with line filter 6A	inlet	4740.3100

- 4740.3100 is with line filter 6A

- Recommended fuse: SP 5 x 20; 10 A / 250VAC, quick acting F, part No. 0001.1014

- Recommended Fuse for filter type: SP 5 x 20; 6.3 A / 250VAC, quick acting F, part No. 0001.1012

- Main plug cable acc. country specific standards

Packaging unit

10 Pcs

Mating Inlets/Plugs**Category / Description**[Interconnection Cord Overview complete](#)

Interconnection Cord with IEC Plug E, Angled	0607
Interconnection Cord with IEC Plug E, Angled	0608
Interconnection Cord with IEC Plug E, Straight	0609
Interconnection Cord with IEC Plug G, Angled	607B
Interconnection Cord with IEC Plug G, Angled	608B
Interconnection Cord further types to 4740	...

[Plug Overview complete](#)

IEC Plug E, Cord Connector (Rewireable), Straight, max. cable Diameter 8.5 mm	4732
IEC Plug E, Cord Connector (Rewireable), Angled, max. Cable Diameter 8.5 mm	4733
IEC Plug E, Cord Connector (Rewireable), Straight, max. Cable Diameter 10 mm	4735
IEC Plug E, Cord Connector (Rewireable), Angled, max. Cable Diameter 10 mm	4736
IEC Plug E, Cord Connector (Rewireable), Straight	9009
Plug further types to 4740	...

Mating Outlets/Connectors



Appliance Outlet Overview complete

IEC Appliance Outlet F, Screw-on Mounting, Front Side, Solder Terminal	4787
IEC Appliance Outlet F, Snap-in Mounting, Front Side, Solder or Quick-connect Terminal	4788
IEC Appliance Outlet F or H, Screw-on Mounting, Front Side, Solder, PCB or Quick-connect Terminal	5091
IEC Appliance Outlet F or H, Screw-on Mounting, Front Side, Solder or Quick-connect Terminal	5092

[Appliance Outlet further types to 4740](#)



Connector Overview complete

IEC Connector C13, Rewireable, Angled	4012
IEC Connector C13, Rewireable, Angled	4013
IEC Connector C13, Rewireable, Straight	4020
IEC Connector C13, Rewireable, Angled	4021
IEC Connector C13, Rewireable, Straight	4022

[Connector further types to 4740](#)

...



Interconnection Cord Overview complete

Interconnection Cord C13, 10 A	6007.0212
Interconnection Cord C13, 10 A	6007.0214

[Interconnection Cord further types to 4740](#)



Power Cord Overview complete

Power Cord with IEC Connector C13, Angled	0311
Power Cord with IEC Connector C13, Angled	3011
Power Cord with IEC Connector C13, Angled	3012
Power Cord with IEC Connector C13, Angled	3013
Power Cord with IEC Connector C13	3020

[Power Cord further types to 4740](#)

...



Power Supply Cord Overview complete

Power Supply Cord with IEC Connector C13 straight, stripped end	6000.0214
Power Supply Cord with IEC Connector C13 angled, stripped end	6000.0224
EU Power Supply Cord with IEC Connector C13, straight	6003.0215
EU Power Supply Cord with IEC Connector C13, straight	6004.0215
US Power Supply Cord with IEC Connector C13, straight	6009.1315

[Power Supply Cord further types to 4740](#)

...

Power Supply or Interconnection Cord Overview complete

Diverse Power Supply and Interconnection Cords 10 A	6003.0204
Diverse Power Supply and Interconnection Cords 10 A	6003.0205
Diverse Power Supply and Interconnection Cords 10 A	6026.0205
UK Power Supply Cord with stripped ends	6044.0204
Diverse Power Supply and Interconnection Cords 10 A	6045.0114

[Power Supply or Interconnection Cord further types to 4740](#)

...

Данный компонент на территории Российской Федерации

Вы можете приобрести в компании MosChip.

Для оперативного оформления запроса Вам необходимо перейти по данной ссылке:

<http://moschip.ru/get-element>

Вы можете разместить у нас заказ для любого Вашего проекта, будь то серийное производство или разработка единичного прибора.

В нашем ассортименте представлены ведущие мировые производители активных и пассивных электронных компонентов.

Нашей специализацией является поставка электронной компонентной базы двойного назначения, продукции таких производителей как XILINX, Intel (ex.ALTERA), Vicor, Microchip, Texas Instruments, Analog Devices, Mini-Circuits, Amphenol, Glenair.

Сотрудничество с глобальными дистрибьюторами электронных компонентов, предоставляет возможность заказывать и получать с международных складов практически любой перечень компонентов в оптимальные для Вас сроки.

На всех этапах разработки и производства наши партнеры могут получить квалифицированную поддержку опытных инженеров.

Система менеджмента качества компании отвечает требованиям в соответствии с ГОСТ Р ИСО 9001, ГОСТ РВ 0015-002 и ЭС РД 009

Офис по работе с юридическими лицами:

105318, г.Москва, ул.Щербаковская д.3, офис 1107, 1118, ДЦ «Щербаковский»

Телефон: +7 495 668-12-70 (многоканальный)

Факс: +7 495 668-12-70 (доб.304)

E-mail: info@moschip.ru

Skype отдела продаж:

moschip.ru

moschip.ru_4

moschip.ru_6

moschip.ru_9