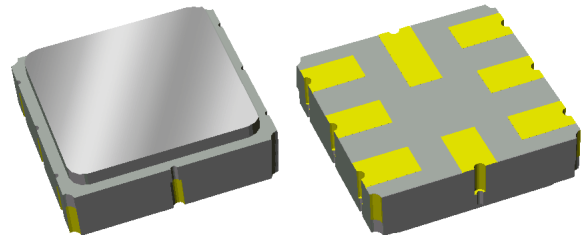


856930

457.5 MHz SAW Filter

Applications

- Smart metering
- Remote meter reading wireless modules
- Licensed band wireless
- General purpose wireless



Product Features

- Usable bandwidth 15 MHz
- Low loss
- Dimensions: 3.80 x 3.80 x 1.27 mm
- Single-ended operation
- No impedance matching required for operation at 50Ω
- Matching can be added for high attenuation performance
- Ceramic Surface Mount Package (SMP)
- Industry standard package
- Hermetic **RoHS** compliant, **Pb-free**

General Description

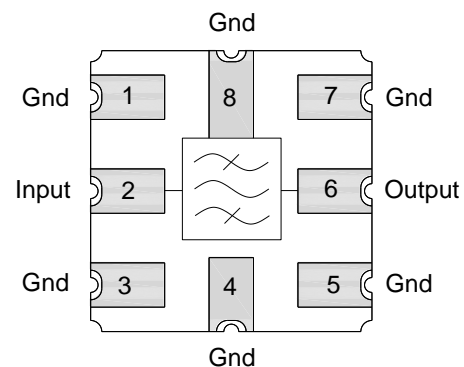
Wireless RF system filter designed specifically for the smart metering infrastructure market.

Low insertion loss, with the option to match for high attenuation, and single ended Input/Output ports make this an effective choice for wireless system designers.

Suitable for use in remote meter reading applications, especially licensed band applications targeting the water metering market.

Functional Block Diagram

Top view



Pin Configuration

Pin #	SE	Description
2		Input
6		Output
1,3,5,7		Ground
4,8		Case Ground

Ordering Information

Part No.	Description
856930	packaged part
856930-EVB	evaluation board

Please specify the unmatched or matched configuration when ordering an evaluation board.

Standard T/R size = 4000 units/reel.

Specifications - Unmatched

Electrical Specifications ⁽¹⁾

Specified Temperature Range: ⁽²⁾ -40 to +85 °C

Parameter ⁽³⁾	Conditions	Min	Typical ⁽⁴⁾	Max	Units
Center Frequency		-	457.5	-	MHz
Maximum Insertion Loss	450 – 465 MHz	-	2.2	3.0	dB
Amplitude Variation ⁽⁵⁾	450 – 465 MHz	-	1.4	2.0	dB p-p
Lower 3.0 dB Bandedge ⁽⁶⁾		-	447.9	450	MHz
Upper 3.0 dB Bandedge ⁽⁶⁾		465	466.9	-	MHz
Upper 25 dB Bandedge ⁽⁶⁾		-	470.2	472	MHz
Upper 34 dB Bandedge ⁽⁶⁾		-	470.5	475	MHz
Absolute Attenuation ⁽⁶⁾	10 – 420 MHz	30	35	-	dB
	472 – 475 MHz	25	70	-	dB
	475 – 480 MHz	34	55	-	dB
	800 – 1000 MHz	30	36	-	dB
Input/Output Return Loss	450 – 465 MHz	-	9	-	dB
Source Impedance (single-ended) ⁽⁷⁾		-	50	-	Ω
Load Impedance (single-ended) ⁽⁷⁾		-	50	-	Ω

Notes:

- All specifications are based on the TriQuint schematic for the main reference design shown on page 4
- In production, devices will be tested at room temperature to a guardbanded specification to ensure electrical compliance over temperature
- Electrical margin has been built into the design to account for the variations due to temperature drift and manufacturing tolerances
- Typical values are based on average measurements at room temperature
- Evaluated as the total variation over the specified band
- Relative to zero dB
- This is the optimum impedance in order to achieve the performance shown

Absolute Maximum Ratings

Parameter	Rating
Operating Temperature	-40 to +85 °C
Storage Temperature	-40 to +85 °C
Input Power ⁽⁸⁾	+20 dBm

8. Input Power is targeted for an applied CW modulated RF signal at 55 °C for 10,000 hours. Operation of this device outside of the parameter ranges listed above may cause permanent damage.

Specifications - Matched

Electrical Specifications ⁽¹⁾

Specified Temperature Range: ⁽²⁾ -40 to +85 °C

Parameter ⁽³⁾	Conditions	Min	Typical ⁽⁴⁾	Max	Units
Center Frequency		-	457.5	-	MHz
Maximum Insertion Loss	450 – 465 MHz	-	2.9	3.5	dB
Amplitude Variation ⁽⁵⁾	450 – 465 MHz	-	1.4	2.2	dB p-p
Lower 3.5 dB Bandedge ⁽⁶⁾		-	448.33	450	MHz
Upper 3.5 dB Bandedge ⁽⁶⁾		465	466.93	-	MHz
Upper 25 dB Bandedge ⁽⁶⁾		-	470.5	472.4	MHz
Upper 34 dB Bandedge ⁽⁶⁾		-	470.81	475	MHz
Absolute Attenuation ⁽⁶⁾	10 – 300 MHz	50	53	-	dB
	300 – 420 MHz	25	32	-	dB
	472.4 – 475MHz	25	65	-	
	475 – 480 MHz	34	62	-	dB
	480 – 1000 MHz	30	39	-	dB
Input/Output Return Loss	450 – 465 MHz	-	9	-	dB
Source Impedance (single-ended) ⁽⁷⁾		-	50	-	Ω
Load Impedance (single-ended) ⁽⁷⁾		-	50	-	Ω

Notes:

- All specifications are based on the TriQuint schematic for the main reference design shown on page 6
- In production, devices will be tested at room temperature to a guardbanded specification to ensure electrical compliance over temperature
- Electrical margin has been built into the design to account for the variations due to temperature drift and manufacturing tolerances
- Typical values are based on average measurements at room temperature
- Evaluated as the total variation over the specified band
- Relative to zero dB
- This is the optimum impedance in order to achieve the performance shown

Absolute Maximum Ratings

Parameter	Rating
Operating Temperature	-40 to +85 °C
Storage Temperature	-40 to +85 °C
Input Power ⁽⁸⁾	+20 dBm

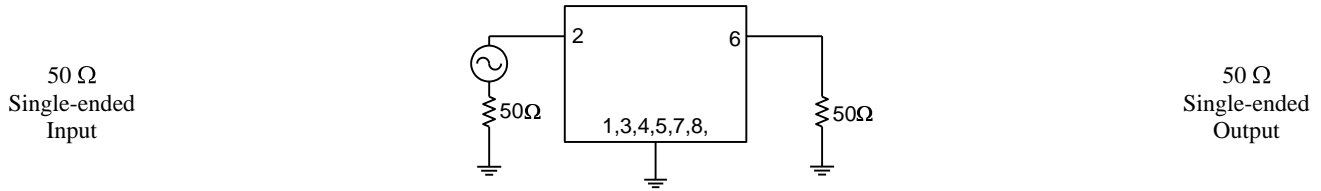
- Input Power is targeted for an applied CW modulated RF signal at 55 °C for 10,000 hours. Operation of this device outside the parameter ranges given above may cause permanent damage.

856930

457.5 MHz SAW Filter

Reference – Unmatched

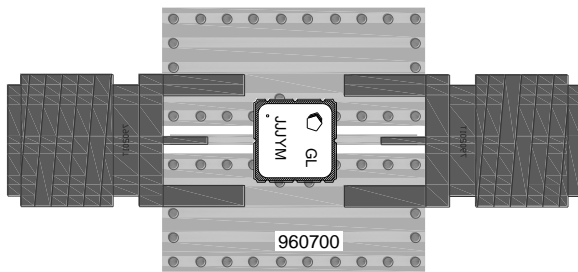
Schematic



Notes:

1. No impedance matching required
2. Actual matching values may vary due to PCB layout and parasitic

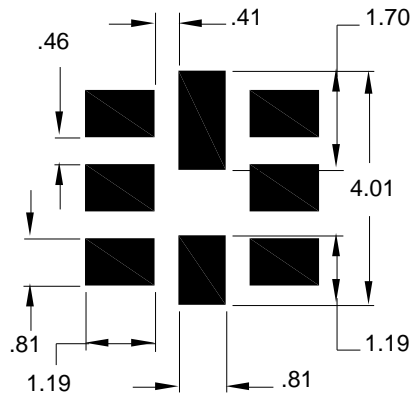
PC Board



Notes:

- Top, middle & bottom layers: 1 oz copper
- Substrates: FR4 dielectric, .031" thick
- Finish plating: Nickel: 3-8 μ m thick, Gold: .03-.2 μ m thick
- Hole plating: Copper min .0008 μ m thick

Mounting Configuration



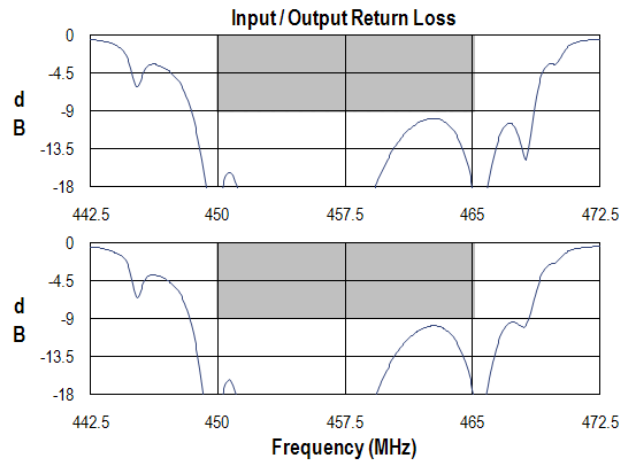
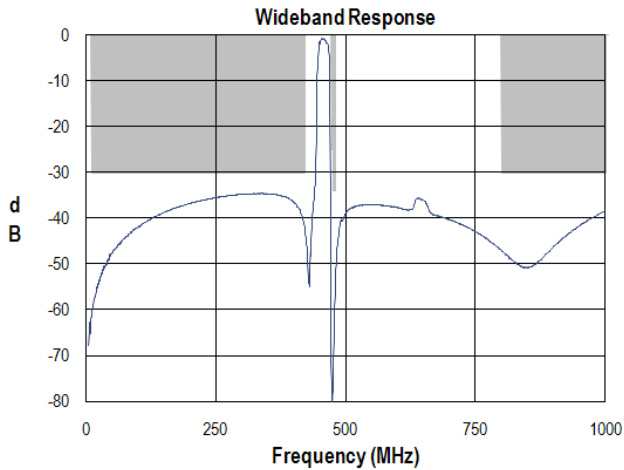
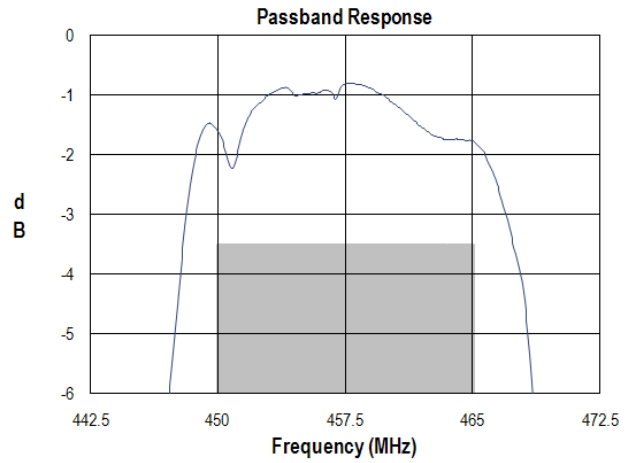
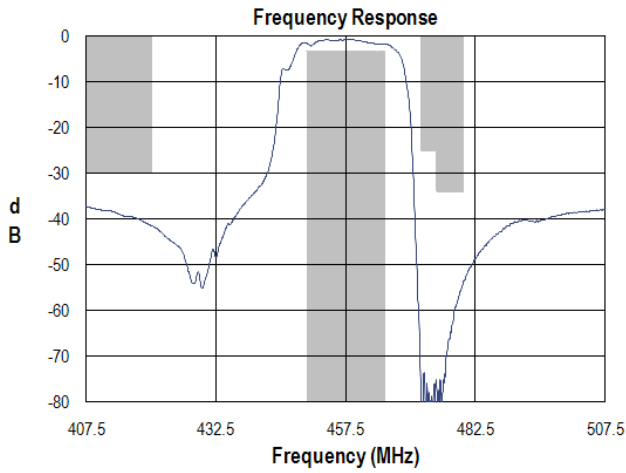
Notes:

1. All dimensions are in millimeters.
2. This footprint represents a recommendation only.

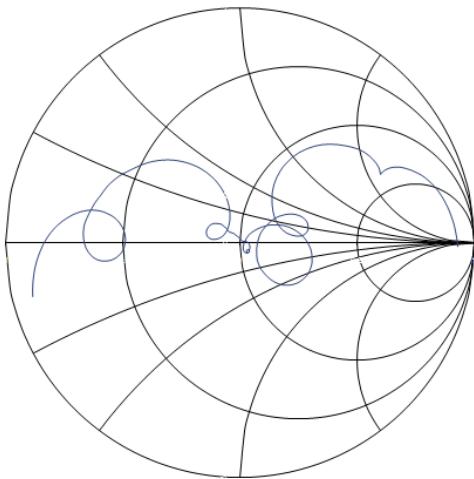
Bill of Material

Reference Desg.	Value	Description	Manufacturer	Part Number
SMA	N/A	SMA connector	Radiall USA Inc.	9602-1111-018
PCB	N/A	3-layer	multiple	960700

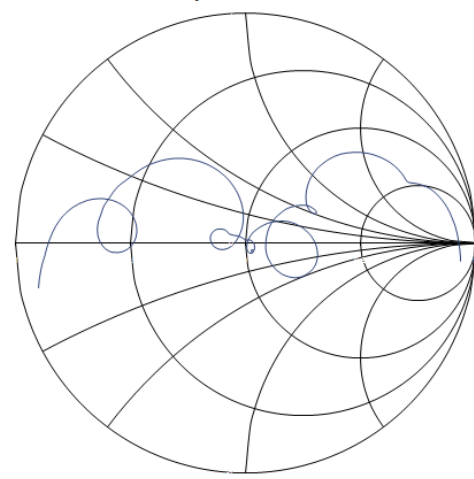
Typical Performance - Unmatched (at room temperature)



Input Smith Chart



Output Smith Chart

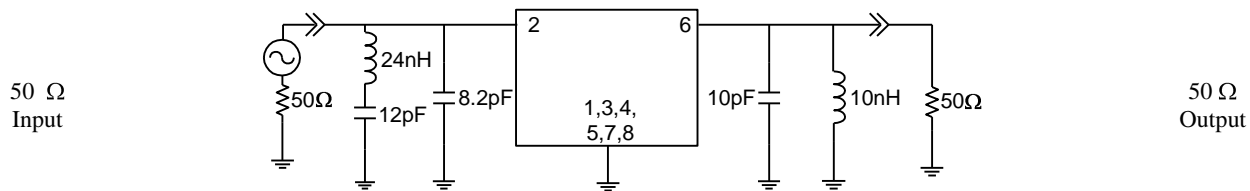


856930

457.5 MHz SAW Filter

Reference – Matched

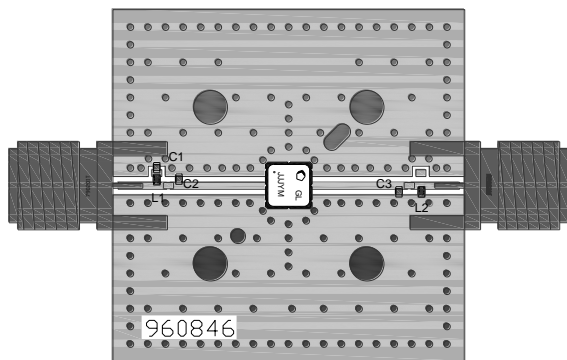
Schematic



Notes:

Actual matching values may vary due to PCB layout and parasitic

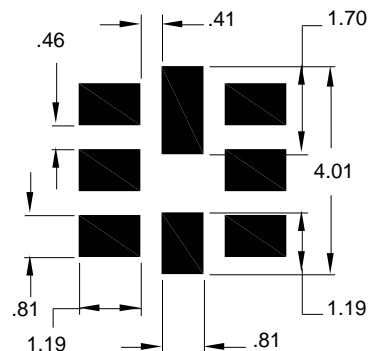
PC Board



Notes:

3-layer board - top, middle & bottom layer: 1 oz copper
 Substrates: .031" thick FR4 dielectric.
 Finish plating: Nickel: 3-8µm thick, Gold: .03-.2µm thick
 Hole plating: Copper min .0008µm thick

Mounting Configuration



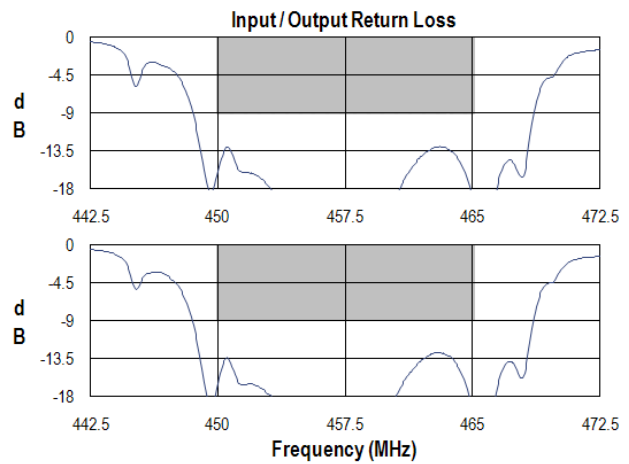
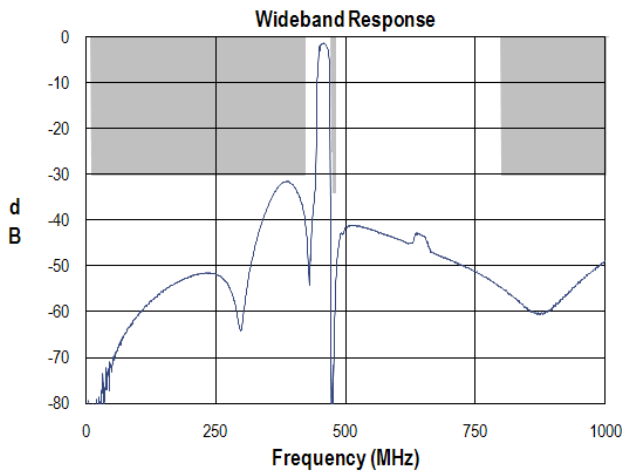
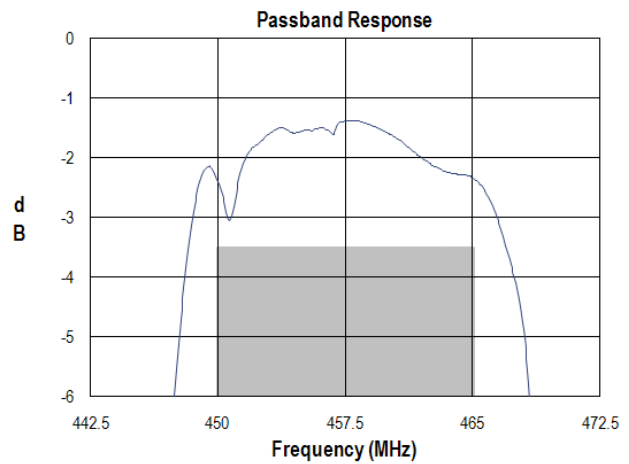
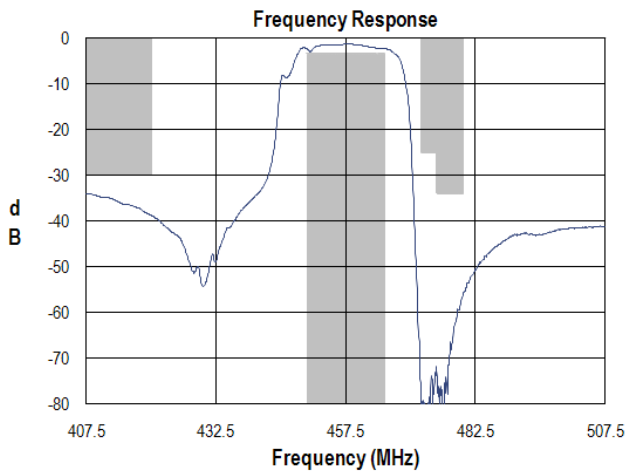
Notes:

1. All dimensions are in millimeters.
2. This footprint represents a recommendation only.

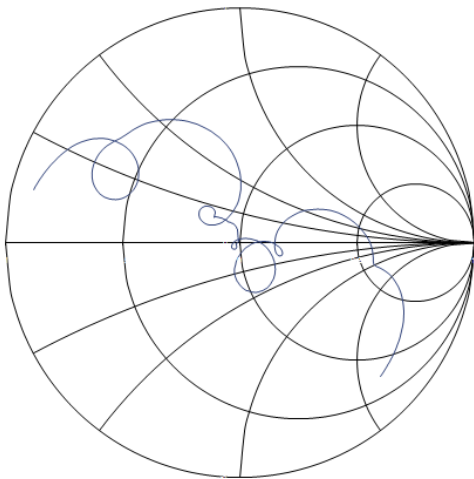
Bill of Material

Reference Desg.	Value	Description	Manufacturer	Part Number
L1	24nH	Coil Wire-wound, 0402	MuRata	LQW15AN24NJ00
L2	10nH	Coil Wire-wound, 0402	MuRata	LQW15AN10NJ00
C1	12pF	Chip Ceramic, 0402	MuRata	GRM1555C1H120GZ01
C2	8.2pF	Chip Ceramic, 0402	MuRata	GRM1555C1H8R2FZ01
C3	10pF	Chip Ceramic, 0402	MuRata	GRM1555C1H100KZ01
SMA	N/A	SMA connector	Radiall USA Inc.	9602-1111-018
PCB	N/A	3-layer	multiple	960846

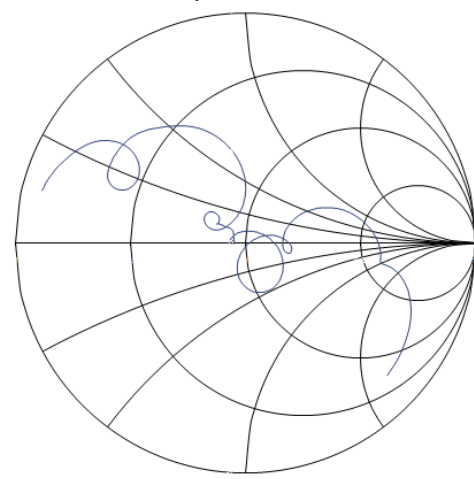
Typical Performance - Matched (at room temperature)



Input Smith Chart

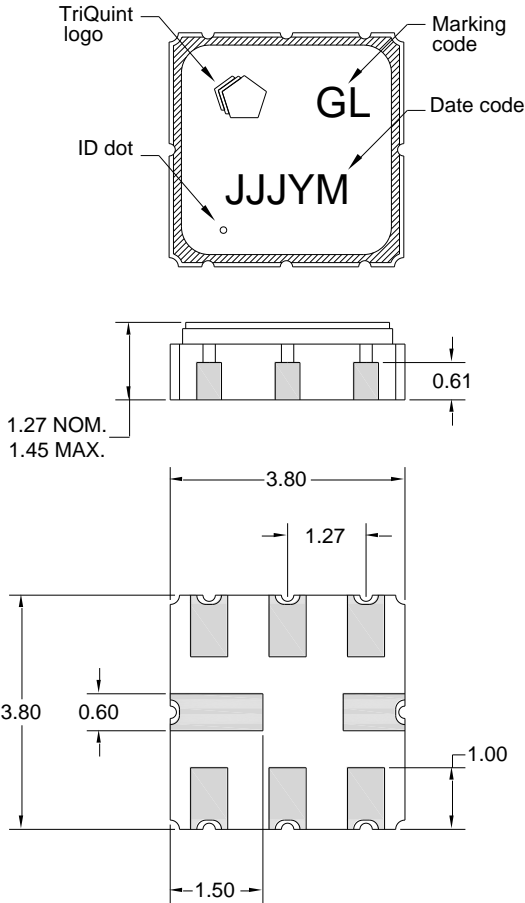


Output Smith Chart



Mechanical Information

Package Information, Dimensions and Marking



Package Style: SMP-15
 Dimensions: 3.80 x 3.80 x 1.27 mm

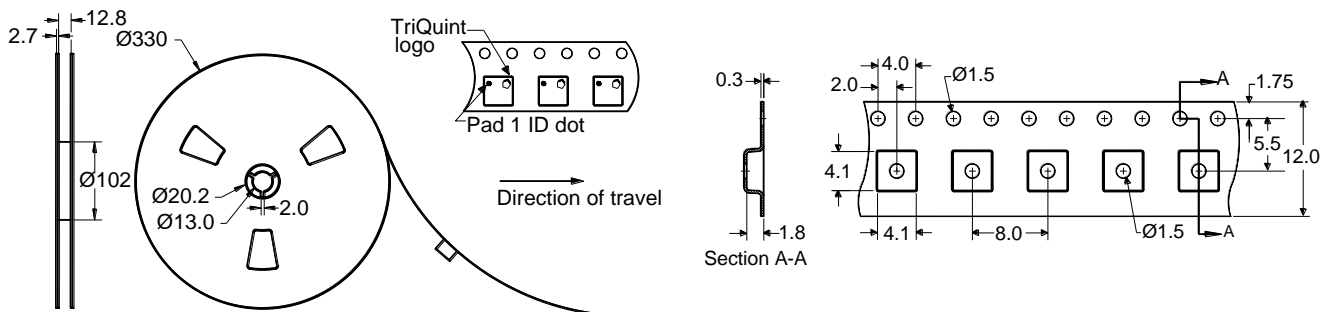
Body: Al_2O_3 ceramic
 Lid: Kovar, Ni plated
 Terminations: Au plating 0.5 - 1.0 μ m, over a 2-6 μ m Ni plating

All dimensions shown are nominal in millimeters
 All tolerances are ± 0.15 mm except overall length and width ± 0.10 mm

The date code consists of day of the current year (Julian, 3 digits), Y = last digit of the year, and M = manufacturing site code

Tape and Reel Information

Standard T/R size = 4000 units/reel. All dimensions are in millimeters



Product Compliance Information

ESD Information



Caution! ESD-Sensitive Device

ESD Rating: 1B

Value: Passes ≥ 800 V min.
 Test: Human Body Model (HBM)
 Standard: JEDEC Standard JESD22-A114

ESD Rating: B

Value: Passes ≥ 300 V min.
 Test: Machine Model (MM)
 Standard: JEDEC Standard JESD22-A115

MSL Rating

Devices are Hermetic, therefore MSL is not applicable

Solderability

Compatible with the latest version of J-STD-020, lead free solder, 260°C

Refer to [Soldering Profile](#) for recommended guidelines.

This part is compliant with EU 2002/95/EC RoHS directive (Restrictions on the Use of Certain Hazardous Substances in Electrical and Electronic Equipment).

This product also has the following attributes:

- Halogen Free (Chlorine, Bromine)
- Antimony Free
- TBBP-A (C₁₅H₁₂Br₄O₂) Free
- PFOS Free
- SVHC Free

Contact Information

For the latest specifications, additional product information, worldwide sales and distribution locations, and information about TriQuint:

Web: www.triquint.com
 Email: info-sales@tqs.com

Tel: +1.407.886.8860
 Fax: +1.407.886.7061

For technical questions and application information:

Email: flapplication.engineering@tqs.com

Important Notice

The information contained herein is believed to be reliable. TriQuint makes no warranties regarding the information contained herein. TriQuint assumes no responsibility or liability whatsoever for any of the information contained herein. TriQuint assumes no responsibility or liability whatsoever for the use of the information contained herein. The information contained herein is provided "AS IS, WHERE IS" and with all faults, and the entire risk associated with such information is entirely with the user. All information contained herein is subject to change without notice. Customers should obtain and verify the latest relevant information before placing orders for TriQuint products. The information contained herein or any use of such information does not grant, explicitly or implicitly, to any party any patent rights, licenses, or any other intellectual property rights, whether with regard to such information itself or anything described by such information.

TriQuint products are not warranted or authorized for use as critical components in medical, life-saving, or life-sustaining applications, or other applications where a failure would reasonably be expected to cause severe personal injury or death.

Данный компонент на территории Российской Федерации

Вы можете приобрести в компании MosChip.

Для оперативного оформления запроса Вам необходимо перейти по данной ссылке:

<http://moschip.ru/get-element>

Вы можете разместить у нас заказ для любого Вашего проекта, будь то серийное производство или разработка единичного прибора.

В нашем ассортименте представлены ведущие мировые производители активных и пассивных электронных компонентов.

Нашей специализацией является поставка электронной компонентной базы двойного назначения, продукции таких производителей как XILINX, Intel (ex.ALTERA), Vicor, Microchip, Texas Instruments, Analog Devices, Mini-Circuits, Amphenol, Glenair.

Сотрудничество с глобальными дистрибьюторами электронных компонентов, предоставляет возможность заказывать и получать с международных складов практически любой перечень компонентов в оптимальные для Вас сроки.

На всех этапах разработки и производства наши партнеры могут получить квалифицированную поддержку опытных инженеров.

Система менеджмента качества компании отвечает требованиям в соответствии с ГОСТ Р ИСО 9001, ГОСТ РВ 0015-002 и ЭС РД 009

Офис по работе с юридическими лицами:

105318, г.Москва, ул.Щербаковская д.3, офис 1107, 1118, ДЦ «Щербаковский»

Телефон: +7 495 668-12-70 (многоканальный)

Факс: +7 495 668-12-70 (доб.304)

E-mail: info@moschip.ru

Skype отдела продаж:

moschip.ru

moschip.ru_4

moschip.ru_6

moschip.ru_9