

Cable Gland Standard Straight-Through - Polyamide

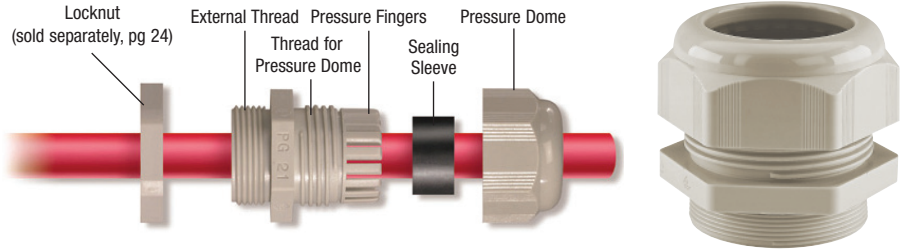
Material:

- Body: Polyamide 6
- Seal: Neoprene

Technical properties:

- Maximum strain relief through clamping range
- IP68 achieved without seal rings (PG and metric only)¹
- Trapezoidal thread with high torque guarantees tight and permanent fit of the dome nut
- Gas tight and watertight

Applications: Machines and devices



PG Thread

Outer thread	Clamping range mm	Cat. No. Light Grey	Cat. No. Black	Std. Pk.
PG 7	1.5-5	5309 107	5309 207	100
PG 7	2.5-6.5	5308 707	5308 507	100
PG 9	1.5-6	5309 109	5309 209	50
PG 9	2.5-8	5308 709	5308 509	50
PG 11	2-7	5309 111	5309 211	50
PG 11	3.5-10	5308 711	5308 511	50
PG 13.5	3-9	5309 113	5309 213	50
PG 13.5	5-12	5308 713	5308 513	50
PG 16	5-12	5309 116	5309 216	50
PG 16	7-14	5308 716	5308 516	50
PG 21	7-16	5309 121	5309 221	25
PG 21	9-18	5308 721	5308 521	25
PG 29	11-21	5309 129	5309 229	20
PG 29	14-25	5308 729	5308 529	20
PG 36	13-26	5309 136	5309 236	10
PG 36	18-32	5308 736	5308 536	10
PG 42	17-31	5309 142	5309 242	5
PG 42	24-38.5	5308 737	5308 537	5
PG 48	26-39	5309 148	5309 248	5
PG 48	35-48	5308 738	5308 538	5



Temperature Range
-25 to 100°C
(-13 to 212°F)

Thread Size	Dimensions					
	H mm	E mm	L mm	ØC mm	ØP mm	ØThread mm
PG7	15	8	32	6.7	6.8	12.5
PG9	19	8	35	8.5	8.7	15.2
PG11	22	8	37	10.5	10.5	18.6
PG13.5	24	9	39	12.5	12.5	20.4
PG16	27	10	43	14.5	14.5	22.5
PG21	33	11	50	18.5	18.5	28.3
PG29	42	11	53	25.5	25.5	37.0
PG36	53	13	65	32.5	32.5	47.0
PG42	60	13	68	39.0	39.0	54.0
PG48	70	14	70	48.5	48.5	59.3

NPT Thread

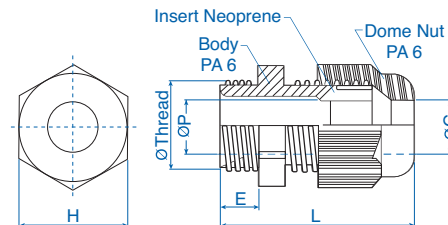
NPT 3/8"	1.5-6	5308 904	5308 924	50
NPT 3/8"	2.5-8	5308 900	5308 920	50
NPT 1/2"	3-9	5308 905	5308 925	50
NPT 1/2"	5-12	5308 901	5308 921	50
NPT 3/4"	7-16	5308 906	5308 926	20
NPT 3/4"	9-18	5308 902	5308 922	20
NPT 1"	11-21	5308 907	5308 927	20
NPT 1"	14-25	5308 903	5308 923	20

NPT 3/8	19	11	38	8.5	8.7	17.1
NPT 1/2	24	14	44	12.5	12.5	21.2
NPT 3/4	33	15	54	18.5	18.5	26.7
NPT 1	42	18	60	25.5	25.5	33.3

M12x1.5	15	8	32	6.7	6.8	12.0
M16x1.5/9	19	10	37	8.5	8.5	16.0
M16x1.5/11	22	10	39	10.5	10.5	16.0
M20x1.5/13	24	10	40	12.5	12.5	20.0
M20x1.5/16	27	10	43	14.5	14.5	20.0
M25x1.5/16	27	10	45	14.5	14.5	25.0
M25x1.5/21	33	10	49	18.5	18.5	25.0
M32x1.5	42	10	52	25.5	25.5	32.0
M40x1.5	53	10	62	32.5	32.5	40.0
M50x1.5	60	12	67	39.0	39.0	50.0
M63x1.5	70	12	68	48.5	48.5	63.0

Metric Thread*

M 12 x 1.5	1.5-5	5309 612	5309 712	100
M 12 x 1.5	2.5-6.5	5308 950	5308 940	100
M 16 x 1.5/9	1.5-6	5309 615	5309 715	50
M 16 x 1.5/11	2-7	5309 616	5309 716	50
M 16 x 1.5/9	2.5-8	5308 958	5308 948	50
M 16 x 1.5/11	3.5-10	5308 951	5308 941	50
M 20 x 1.5/13	3-9	5309 619	5309 719	50
M 20 x 1.5/16	5-12	5309 620	5309 720	50
M 20 x 1.5/13	5-12	5308 959	5308 949	50
M 20 x 1.5/16	7-14	5308 952	5308 942	50
M 25 x 1.5/16	5-12	5309 624	5309 724	50
M 25 x 1.5/21	7-16	5309 625	5309 725	25
M 25 x 1.5/16	7-14	5308 960	5308 962	50
M 25 x 1.5/21	9-18	5308 953	5308 943	25
M 32 x 1.5	11-21	5309 632	5309 732	20
M 32 x 1.5	14-25	5308 954	5308 944	20
M 40 x 1.5	13-26	5309 640	5309 740	10
M 40 x 1.5	18-32	5308 955	5308 945	10
M 50 x 1.5	17-31	5309 650	5309 750	5
M 50 x 1.5	24-38.5	5308 956	5308 946	5
M 63 x 1.5	26-39	5309 663	5309 763	5
M 63 x 1.5	35-48	5308 957	5308 947	5



This is one of our most popular series and is usually kept in stock.

* Extended thread available consult Altech. ¹ Seal rings for NPT sold separately, see page 35.

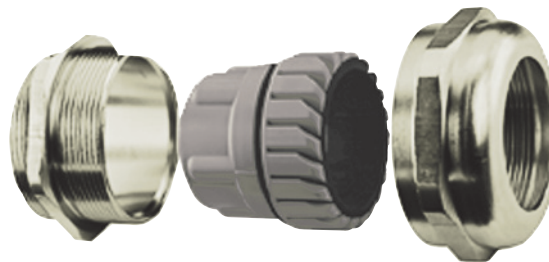
Locknuts sold separately, see page 24.

Material:

- Body: Nickel-plated brass
- Seal: Neoprene
- Clamping insert: Polyamide 6
- Sealing ring for outer thread: Nitril

Technical properties:

- Seal rings included for PG and Metric sizes
- Maximum strain relief through clamp range
- Gas tight and watertight



PG Thread*

Outer thread	Clamping range mm	Cat. No.	Std. Pk.
PG 7	1.5-5	4220351	50
PG 7	2.5-6.5	4220307	50
PG 9	2.5-7	4220352	50
PG 9	4-9.5	4220309	50
PG 11	3-8.5	4220353	50
PG 11	6-11.5	4220311	50
PG 13.5	4-10	4220354	50
PG 13.5	7-13	4220313	50
PG 16	5-12	4220355	50
PG 16	8-15	4220316	50
PG 21	8-16	4220356	20
PG 21	11-19	4220321	20
PG 29	11-21	4220357	20
PG 29	16-26	4220329	20
PG 36	16-28	4220358	10
PG 36	22-34.5	4220336	10
PG 42	22-34	4220359	5
PG 42	27-40	4220342	5
PG 48	28-40	4220360	5
PG 48	35-48	4220348	5



Temperature Range
-25 to 100°C (-13 to 212°F)

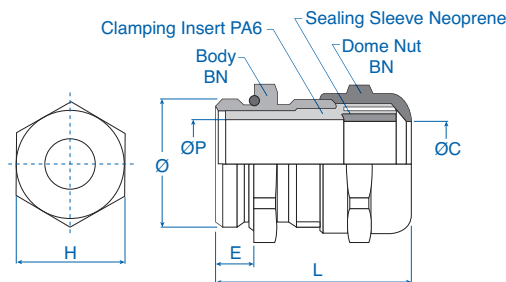
Thread Size	Dimensions					
	H mm	E mm	L mm	ØC mm	ØP mm	ØThread mm
PG7	14	5	25	6	6.6	12.5
PG9	17	6	29	9.7	10	15.2
PG11	20	6	30	11.7	12	18.6
PG13.5	22	6.5	32.5	13.2	13.5	20.4
PG16	24	6.5	34	15.2	15.5	22.5
PG21	30	7	35	19.5	19.5	28.3
PG29	40	8	38	26	26.5	37
PG36	50	9	42	34.5	35	47
PG42	58	10	47	40.5	41	54
PG48	65	10	54	48.5	50	59.3
NPT 3/8"	18	15	38	9.7	10	17.1
NPT 1/2"	23	20	46	13.2	13.5	21.2
NPT 3/4"	28	20	48	16.2	16.5	26.7
NPT 1"	36	25	55	21.5	22	33.3
M12x1.5	14	5	25	6.6	6.6	12
M16x1.5	17	5	28	9.7	10	16
M20x1.5	22	6	32	13.2	13.5	20
M25x1.5	27	7	35	16.2	16.5	25
M32x1.5	34	8	38	21.5	22	32
M40x1.5	42	8	41	27.5	28	40
M50x1.5	55	9	46	35.5	36	50
M63x1.5	65	10	54	48.5	50	63

NPT Thread

Outer thread	Clamping range mm	Cat. No.	Std. Pk.
NPT 3/8"	2.5-7	4220810	50
NPT 3/8"	4-9.5	4220800	50
NPT 1/2"	4-10	4220811	50
NPT 1/2"	7-13	4220801	50
NPT 3/4"	5-13	4220812	20
NPT 3/4"	8-16	4220802	20
NPT 1"	7-17	4220813	5
NPT 1"	11-21	4220803	5

Metric Thread*

Outer thread	Clamping range mm	Cat. No.	Std. Pk.
M 12 x 1.5	1.5-5	4220712	100
M 12 x 1.5	2.5-6.5	4220612	100
M 16 x 1.5	2.5-7	4220716	50
M 16 x 1.5	4-9.5	4220616	50
M 20 x 1.5	4-10	4220720	50
M 20 x 1.5	7-13	4220620	50
M 25 x 1.5	5-13	4220725	25
M 25 x 1.5	8-16	4220625	25
M 32 x 1.5	7-17	4220732	20
M 32 x 1.5	11-21	4220632	20
M 40 x 1.5	10-22	4220740	10
M 40 x 1.5	15-27	4220640	10
M 50 x 1.5	17-29	4220750	5
M 50 x 1.5	22-35	4220650	5
M 63 x 1.5	28-40	4220763	5
M 63 x 1.5	35-48	4220663	5



This is one of our most popular series and is usually kept in stock.

* Extended thread available consult Altech

Locknuts sold separately, see page 25.

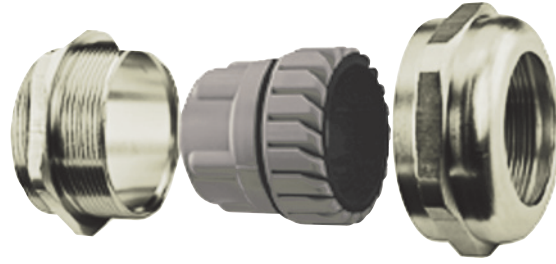
Cable Gland *Standard Straight-Through - Stainless Steel*

Material:

- Body: Stainless Steel 1.4404 / INOX 316L
- Seal: Neoprene
- Clamping insert: Polyamide 6
- Sealing ring for outer thread: Nitril

Technical properties:

- Seal rings included
- Maximum strain relief through clamp range
- Gas tight- and watertight



Metric Thread

M 12 x 1.5	1.5-5	4220860	100
M 12 x 1.5	4.5-6.5	4220850	100
M 16 x 1.5	2.5-7	4220861	50
M 16 x 1.5	5-9.5	4220851	50
M 20 x 1.5	4-10	4220862	50
M 20 x 1.5	8-13	4220852	50
M 25 x 1.5	5-13	4220863	25
M 25 x 1.5	9-16	4220853	25
M 32 x 1.5	7-17	4220864	20
M 32 x 1.5	12-21	4220854	20
M 40 x 1.5	10-22	4220865	10
M 40 x 1.5	16-27	4220855	10
M 50 x 1.5	17-29	4220866	5
M 50 x 1.5	23-35	4220856	5
M 63 x 1.5	28-40	4220867	5
M 63 x 1.5	36-48	4220857	5

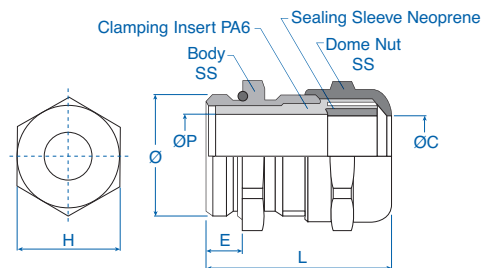
PROTECTION
IP68
RATING

Temperature Range

-25 to 100°C
(-13 to 212°F)

Dimensions

Thread Size	H mm	E mm	L mm	ØC mm	ØP mm	ØThread mm
M12x1.5	14	5	25	6.6	6.6	12
M16x1.5	17	5	28	9.7	10	16
M20x1.5	22	6	32	13.2	13.5	20
M25x1.5	27	7	35	16.2	16.5	25
M32x1.5	34	8	38	21.5	22	32
M40x1.5	42	8	41	27.5	28	40
M50x1.5	55	9	46	35.5	36	50
M63x1.5	65	10	54	48.5	50	63



Locknuts sold separately, see page 24.

Flat Head Sealing

Material:

- EPDM, black

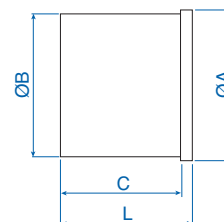
Features:

- For sealing cable gland entries when cables are not being installed.
- Insert into cable gland and tighten gland to seal.



Suitable for	ØA mm	ØB mm	C mm	L mm	Cat. No.	Std. Pk.
PG 9, PG 11, M 16, NPT 3/8	11.0	8.0	17.0	20.0	7217701	100
PG 13.5, PG 16, M 20, NPT 1/2	15.0	12.0	18.0	21.0	7217702	100
PG 21, M 25, NPT 3/4	18.0	15.0	19.0	22.0	7217703	100

Temperature Range
-40 to 130°C (-40 to 266°F)



Multi-Conductor Sealing

Material:

- Neoprene, black

Features:

- Standard Straight-Through Polyamide Series
- Delivered separate, replaces sealing sleeve provided with gland

Suitable for	Hole Quantity	Hole Ø mm	ØA mm	B mm	Cat. No.	Std. Pk.
--------------	---------------	-----------	-------	------	----------	----------

Multi-Conductor Seal

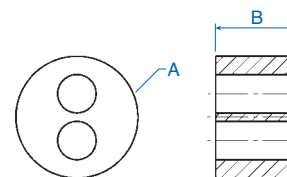
PG 11/ M 16	2	4.0	13.0	8.0	8114200	100
PG 16/ M 20	2	5.0	17.0	10.0	8114203	100
PG 16/ M 20	2	6.0	17.0	10.0	8114201	100
PG 16/ M 20	4	5.0	17.0	10.0	8114202	100
PG 21/ M 25	2	6.0	22.5	11.5	8114204	100
PG 21/ M 25	2	8.0	22.5	11.5	8114208	100
PG 21/ M 25	3	7.0	22.5	11.5	8114205	100
PG 21/ M 25	4	6.5	22.5	11.5	8114206	100
PG 21/ M 25	6	4.0	22.5	11.5	8114207	100
PG 29/ M 32	4	6.0	30.5	13.0	8114212	100
PG 29/ M 32	4	8.0	30.5	13.0	8114209	100
PG 29/ M 32	6	6.0	30.5	13.0	8114210	100
PG 29/ M 32	8	4.0	30.5	13.0	8114211	100

Solid Sealing without holes

PG 11/ M 16	—	—	13.0	8.0	8114250	100
PG 16/ M 20	—	—	17.0	10.0	8114251	100
PG 21/ M 25	—	—	22.5	11.5	8114252	100
PG 29/ M 32	—	—	30.5	13.0	8114253	100



Temperature Range
-25 to 100°C (-13 to 212°F)



This is one of our most popular series and is usually kept in stock.

Данный компонент на территории Российской Федерации

Вы можете приобрести в компании MosChip.

Для оперативного оформления запроса Вам необходимо перейти по данной ссылке:

<http://moschip.ru/get-element>

Вы можете разместить у нас заказ для любого Вашего проекта, будь то серийное производство или разработка единичного прибора.

В нашем ассортименте представлены ведущие мировые производители активных и пассивных электронных компонентов.

Нашей специализацией является поставка электронной компонентной базы двойного назначения, продукции таких производителей как XILINX, Intel (ex.ALTERA), Vicor, Microchip, Texas Instruments, Analog Devices, Mini-Circuits, Amphenol, Glenair.

Сотрудничество с глобальными дистрибьюторами электронных компонентов, предоставляет возможность заказывать и получать с международных складов практически любой перечень компонентов в оптимальные для Вас сроки.

На всех этапах разработки и производства наши партнеры могут получить квалифицированную поддержку опытных инженеров.

Система менеджмента качества компании отвечает требованиям в соответствии с ГОСТ Р ИСО 9001, ГОСТ РВ 0015-002 и ЭС РД 009

Офис по работе с юридическими лицами:

105318, г.Москва, ул.Щербаковская д.3, офис 1107, 1118, ДЦ «Щербаковский»

Телефон: +7 495 668-12-70 (многоканальный)

Факс: +7 495 668-12-70 (доб.304)

E-mail: info@moschip.ru

Skype отдела продаж:

moschip.ru

moschip.ru_4

moschip.ru_6

moschip.ru_9