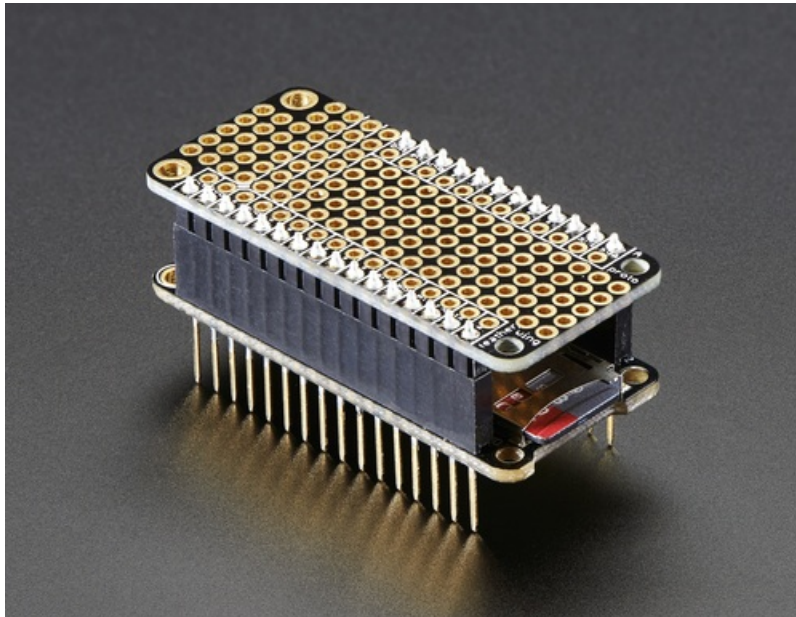




## FeatherWing Proto, Doubler and Tripler

Created by lady ada



Last updated on 2018-11-15 10:39:12 PM UTC

## Guide Contents

Guide Contents	2
Overview	3
FeatherWing Proto	3
FeatherWing Doubler	3
FeatherWing Tripler	4
Proto Pinout	6
Proto Pinout	6
Duplicated IO Pins	6
Power Rails	7
Proto Grid	7
Doubler Pinout	9
Doubler Pinout	9
Duplicated IO Pins	9
Power Rails	11
Proto Grid	12
Tripler Pinout	14
I'm missing some of the copper traces on the back.	14
Assembly	15
Downloads	17
Fabrication prints	17

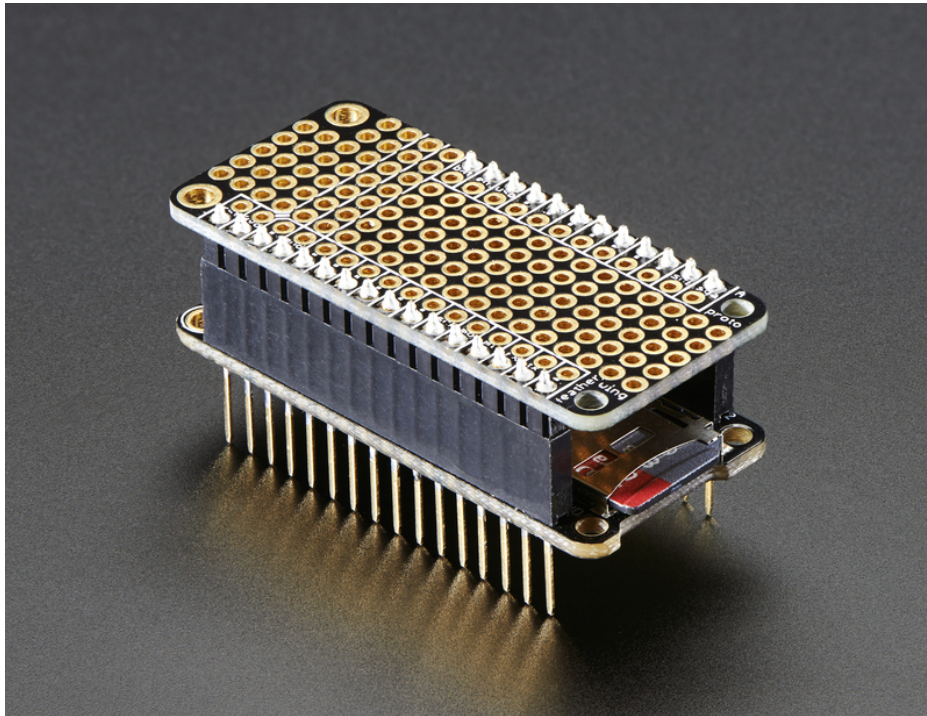
## Overview

Once you've got your Feather board up and running you probably want to have some custom circuitry attached. Of course, you can start with a breadboard setup and that will work just fine for prototyping. But, once you know what you want, a proto feather can keep the components compact and secure.

We have *three options* for prototyping, all are "FeatherWings" - add on boards that can be plugged right into any Feather.

## FeatherWing Proto

---

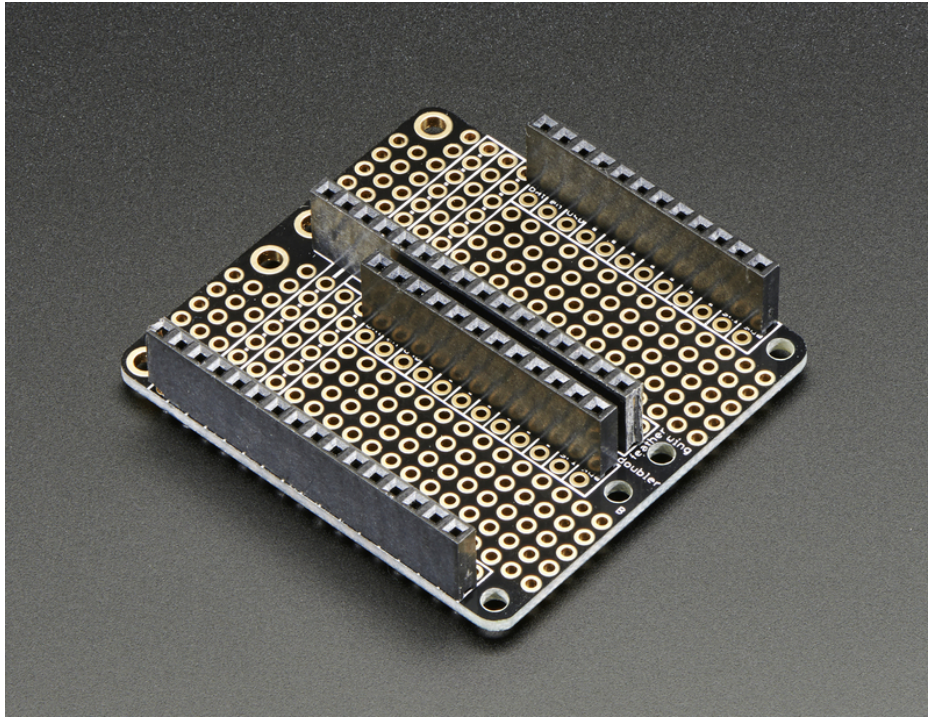


First is the **FeatherWing Proto** - a prototyping add-on for all Feather boards. Using our [Feather Stacking Headers](http://adafru.it/2830) (<http://adafru.it/2830>) or [Feather Female Headers](http://adafru.it/2886) (<http://adafru.it/2886>) you can connect a FeatherWing on top or bottom of your Feather board.

This has a duplicate breakout for each pin on a Feather, as well as a bunch of plain grid proto holes. For GND and 3.3V, we give you a strip of connected pads. There's plenty of room for [buttons](https://adafru.it/dSh) (<https://adafru.it/dSh>), [indicator LEDs](https://adafru.it/dLA) (<https://adafru.it/dLA>), or anything for your portable project. The FeatherWing Proto makes an ideal partner for any of our Feather boards.

## FeatherWing Doubler

---



If you need even more space, or maybe you want to have two wings plugged in at once, you can double your prototyping space with a FeatherWing Doubler. Using our [Feather Stacking Headers \(http://adafruit.it/2830\)](http://adafruit.it/2830) or [Feather Female Headers \(http://adafruit.it/2886\)](http://adafruit.it/2886) you can connect a FeatherWing on top or bottom of your Feather board.

This design also has duplicate breakout for each pin on a Feather, as well as a bunch of plain grid proto holes. For GND and 3.3V, we give you a strip of connected pads. The I/O pins are 'connected through' between the two sides with skinny 10mil thick traces that pass through the 0.1" grid holes so you can plug a Feather into one side and you get a fully connected set of headers on the other side

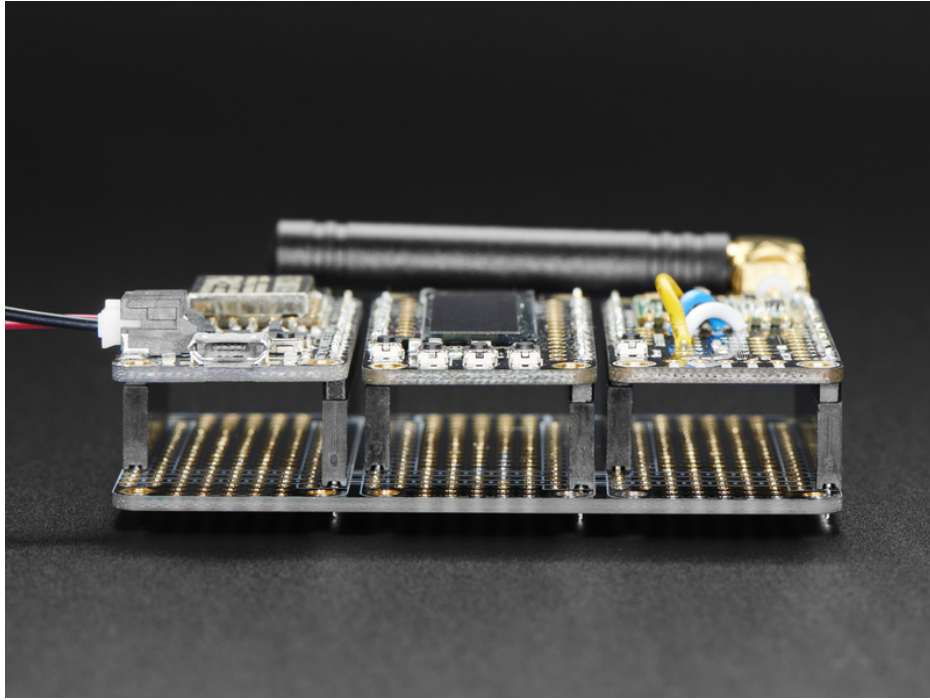
## FeatherWing Tripler

---

Need MOAR space? Get 50% more than a Doubler with the Tripler!

This is similar to our [FeatherWing Proto \(http://adafruit.it/2884\)](http://adafruit.it/2884) except there are three! The magic of the Tripler comes when you want to connect your Feather to two other Feather Wings without needing any stacking headers!

This design also has duplicate breakouts for each pin on a Feather, as well as a bunch of plain grid proto holes. For GND and 3.3V, we give you a strip of connected pads. The I/O pins are 'connected through' between the two sides with skinny 10mil thick traces that pass through the 0.1" grid holes so you can plug a Feather into one side and you get two fully connected sets of headers on the other side

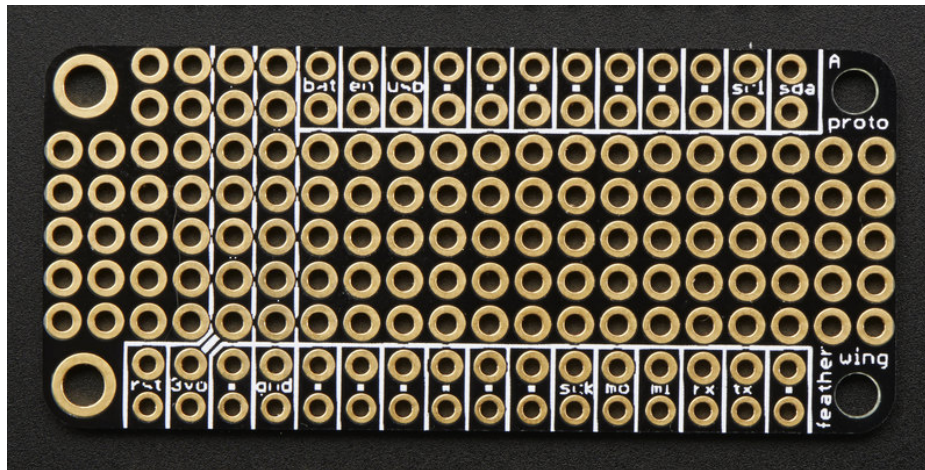


## Proto Pinout

## Proto Pinout

---

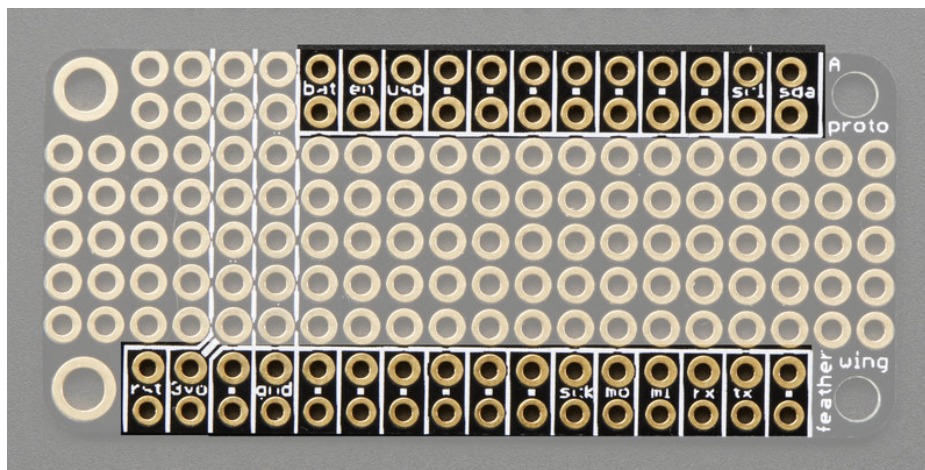
The Proto Featherwing is fairly simple. It's 2.0" x 0.9" so it fits right over a feather.

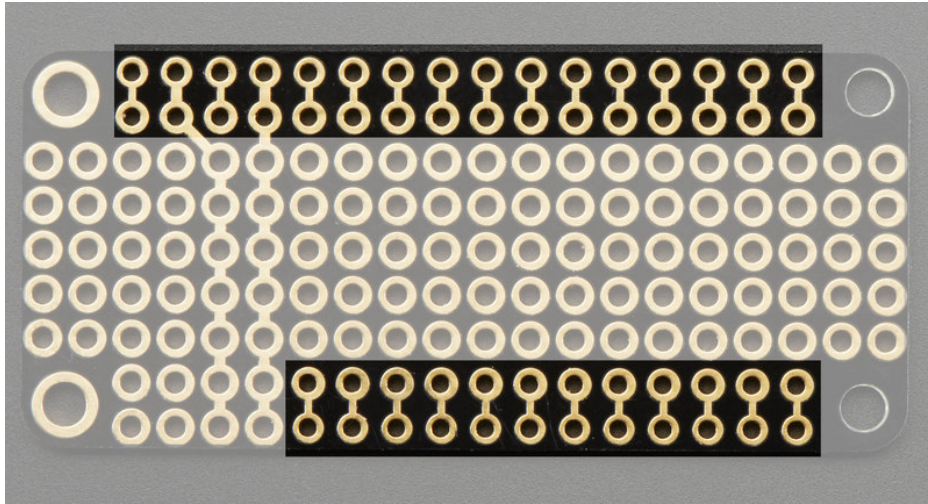


## Duplicated IO Pins

---

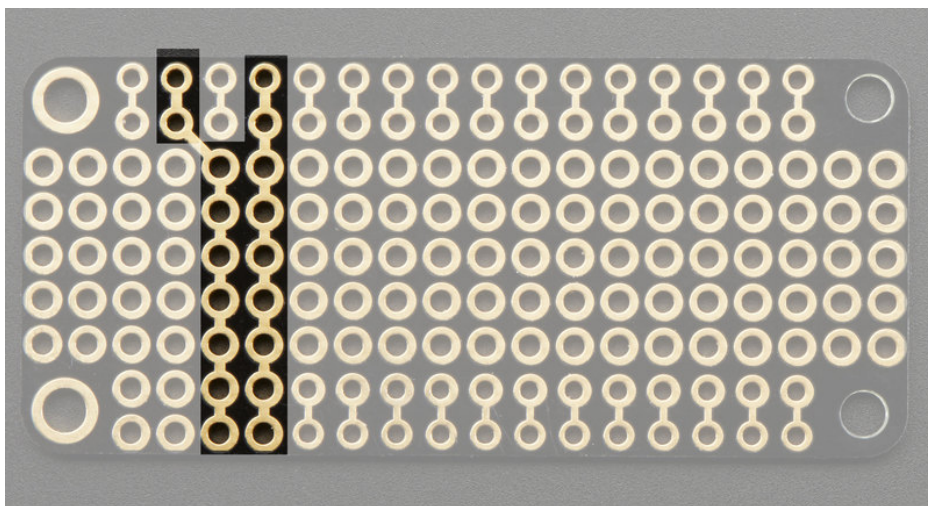
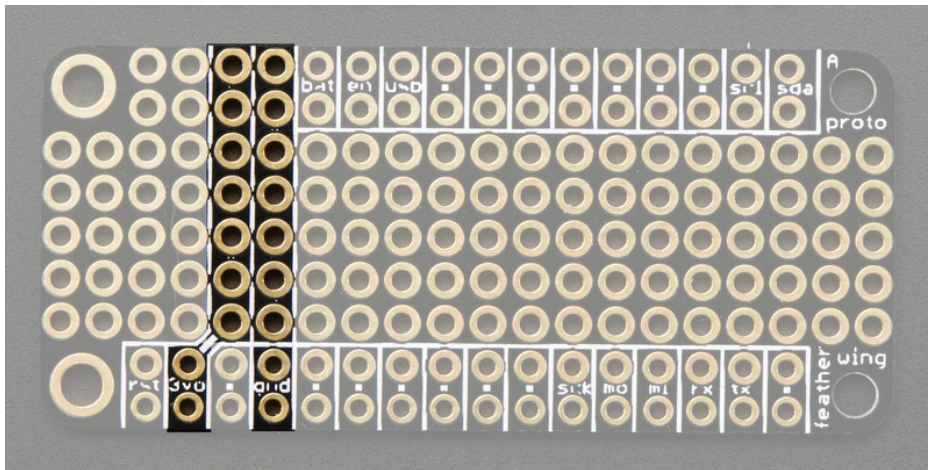
On the outer edge are all the pins you'd want to solder in to connect to the Feather. The inner set of pins are boxed and have small text or dots to indicate they are connected. The above shows the outer and inner set of pins. They are tied together so you have access to each I/O pin!





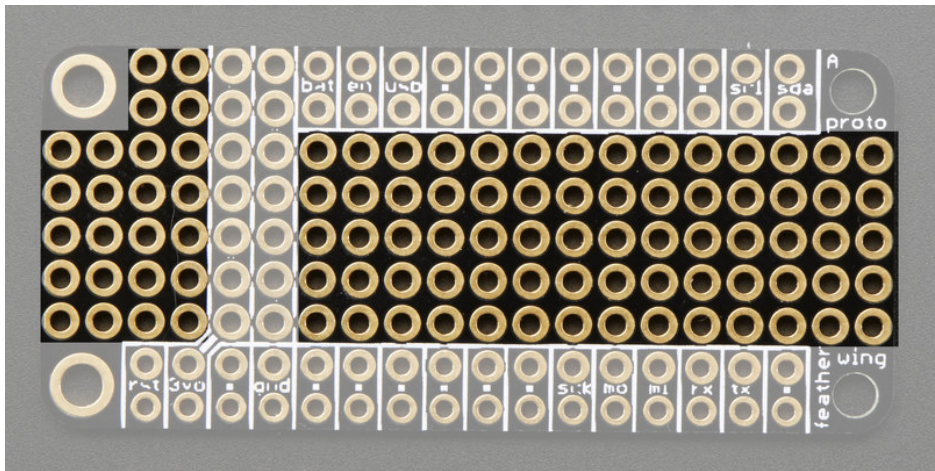
## Power Rails

You also have two strips of holes that are all connected for 3.3V (left strip) and GND (right strip). This way you have plenty of power/ground connections available. The holes are 0.047" diameter and are connected with 24mil traces.



## Proto Grid

Finally, there's a full set of prototyping grid, each hole is 0.047" diameter

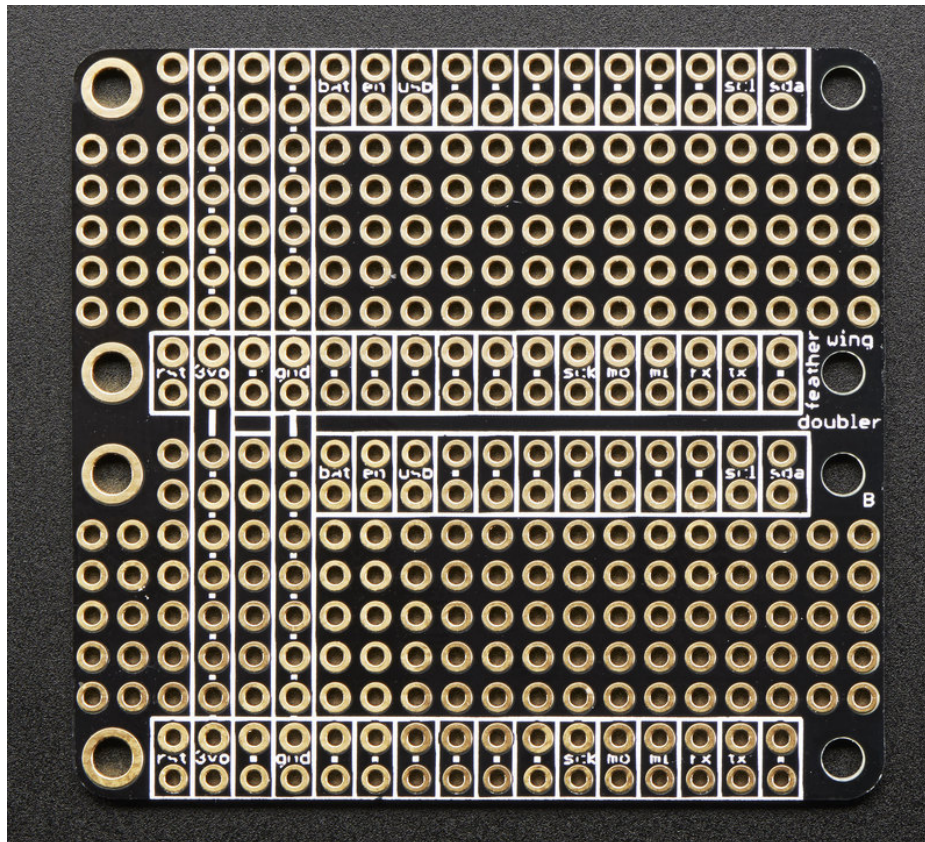




## Doubler Pinout

## Doubler Pinout

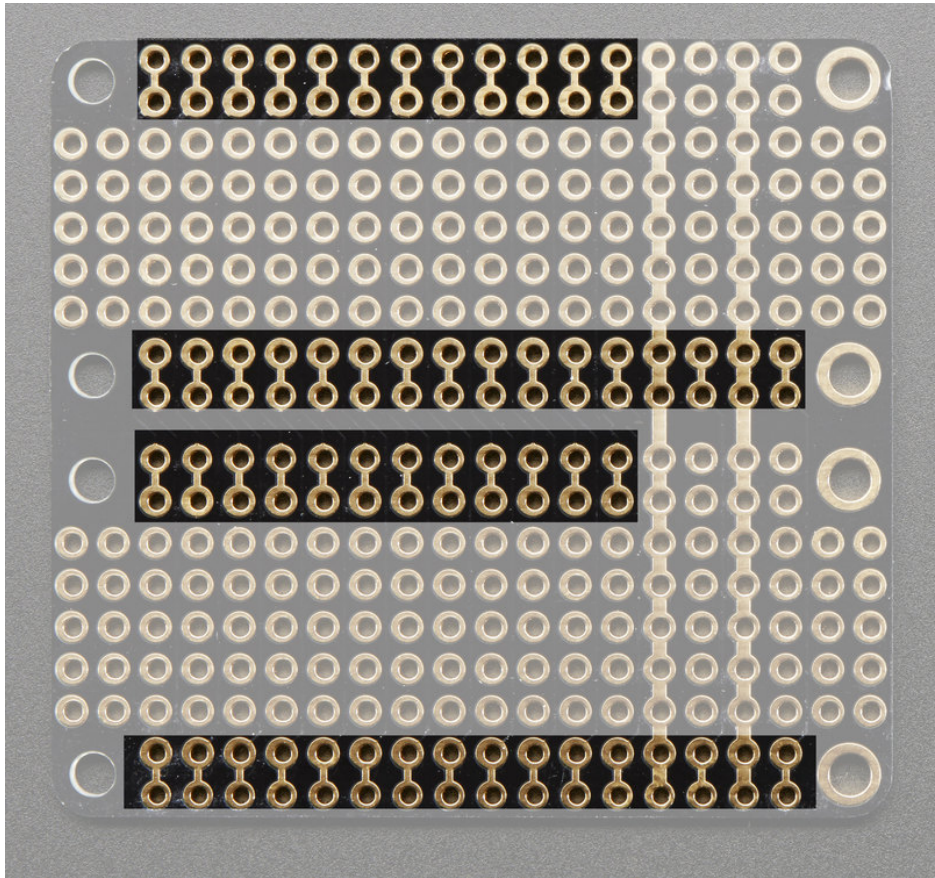
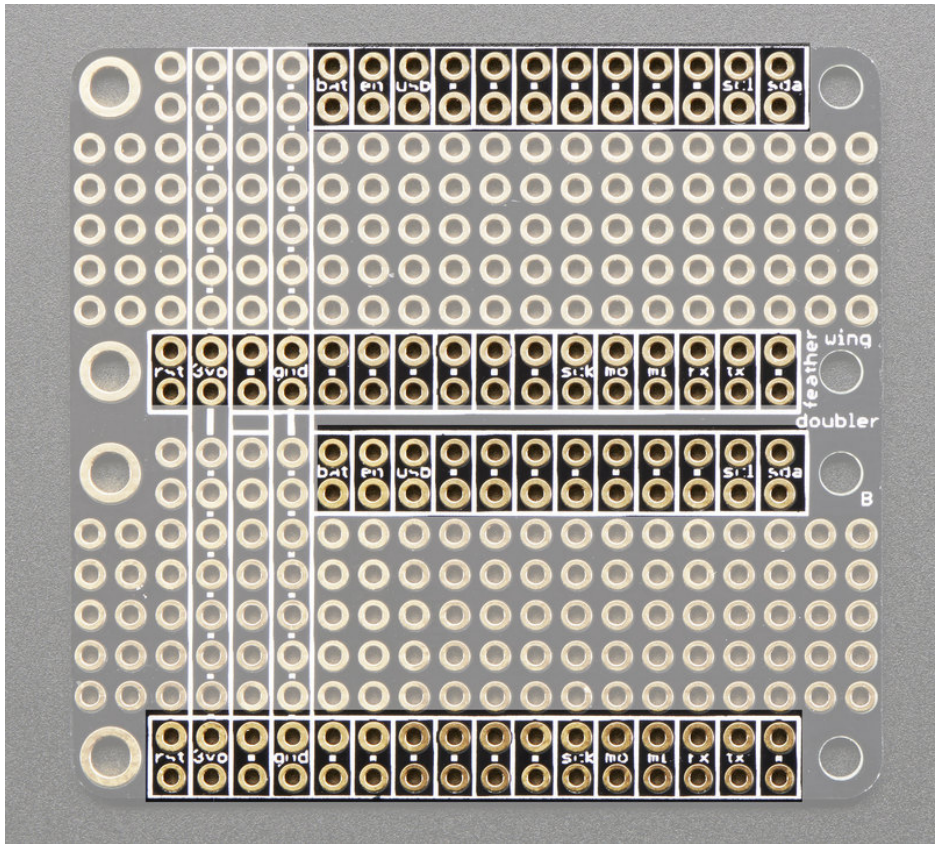
The Doubler Featherwing is fairly simple. It's 2.0" x 1.9" - the same as two proto Featherwings side by side with a 0.1" spacing in between (since there's slight variations on PCB routes, you don't want to have no spacing between them or plugged-in-feathers might jam)



## Duplicated IO Pins

On the outer edges are all the pins you'd want to solder in to connect to the Feather. The inner set of pins are boxed and have small text or dots to indicate they are connected. They are tied together so you have access to each I/O pin!

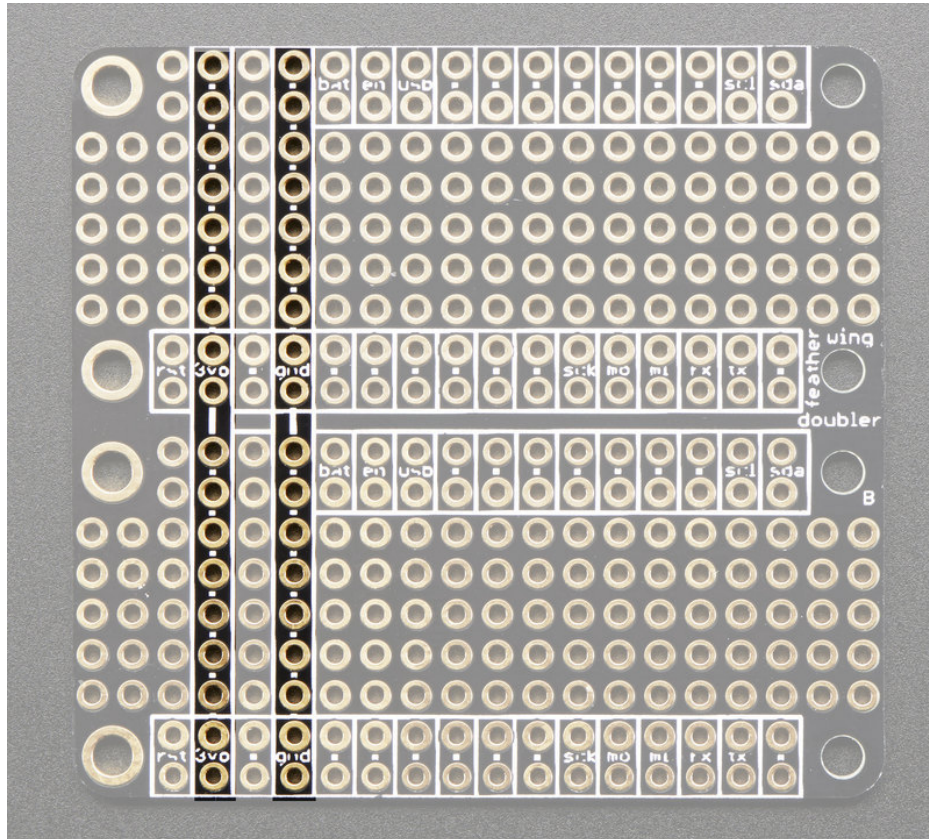
Also, both sets of IO pins are connected together

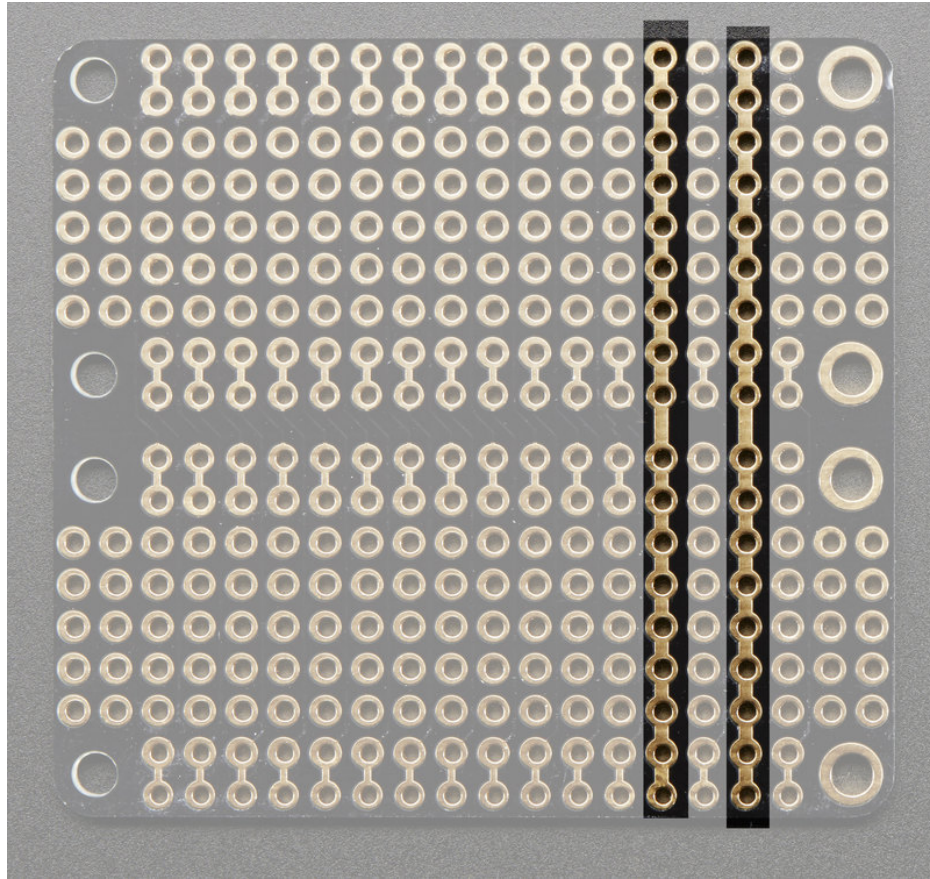


## Power Rails

You also have two strips of holes that are all connected for 3.3V (left strip) and GND (right strip). This way you have plenty of power/ground connections available. The holes are 0.047" diameter and are connected with 32mil traces.

Note there's a thin strip of proto holes in between the 3V and GND rails



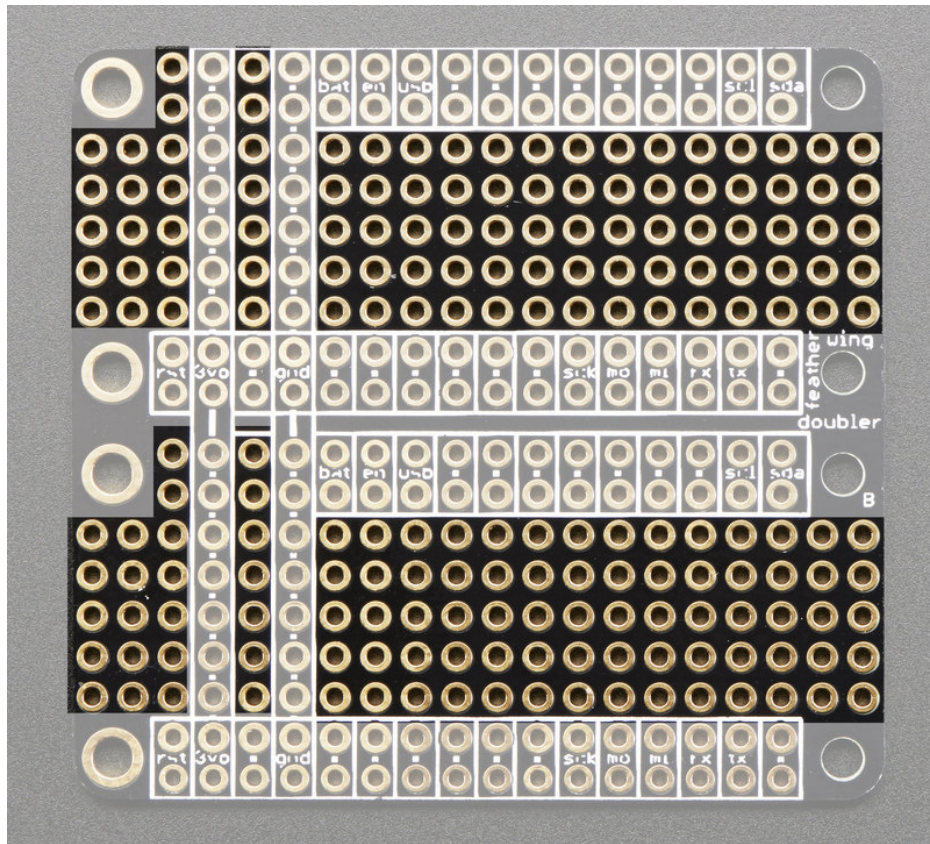


## Proto Grid

---

Finally, there's a full set of prototyping grid, each hole is 0.047" diameter

Note there's a thin strip of proto holes in between the 3V and GND rails

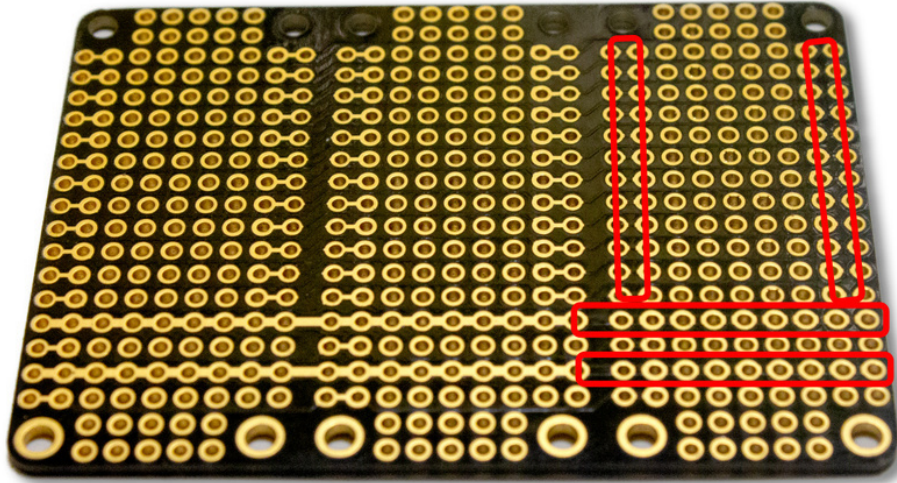


## Tripler Pinout

The tripler pinout is pretty much the same as the doubler. There's just one extra footprint. So look there for pinout info.

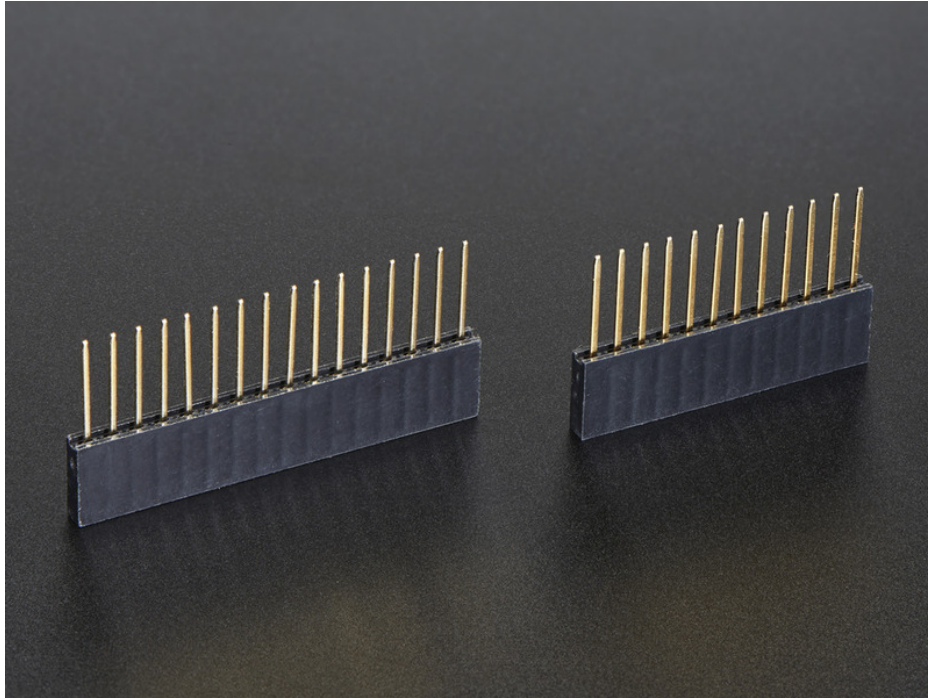
### I'm missing some of the copper traces on the back.

If your tripler looks like the one below, then it's OK. The copper traces are still there, and if you look close you should be able to see them. The solder mask in these areas just didn't get removed for some reason. This is just a cosmetic issue and does not affect functionality.

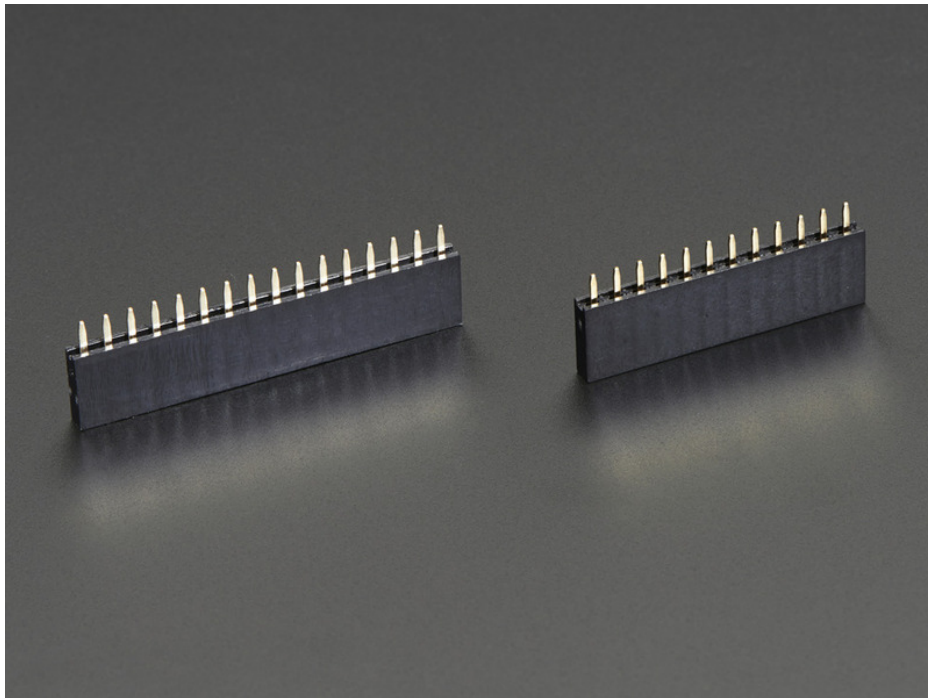


## Assembly

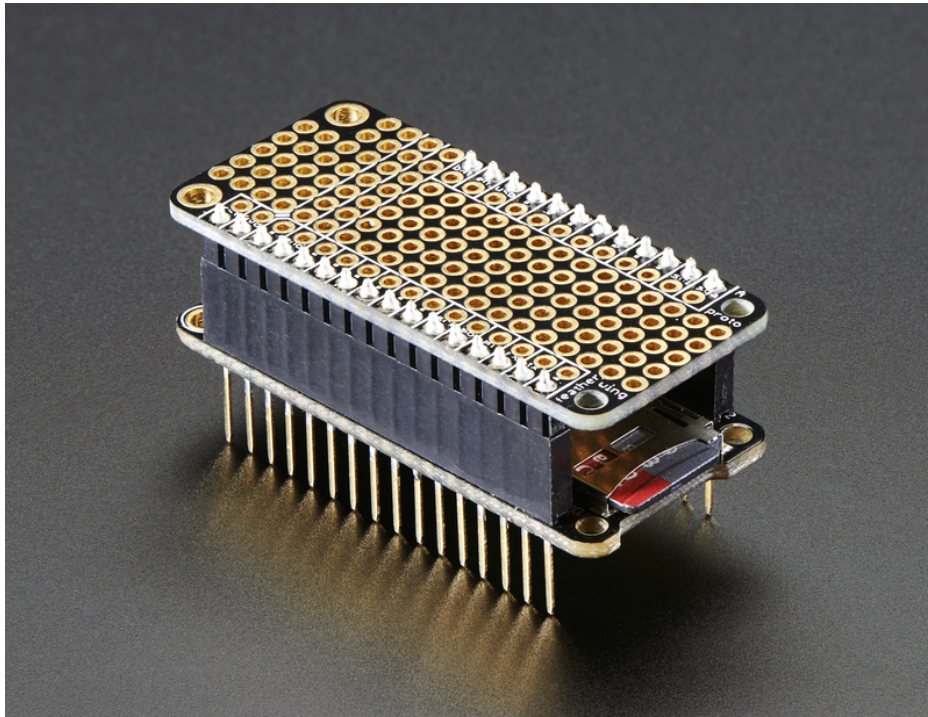
When putting together your Proto or Doubler Featherwings, think about how you want it to connect, you can use stacking headers:



Or plain female socket headers:

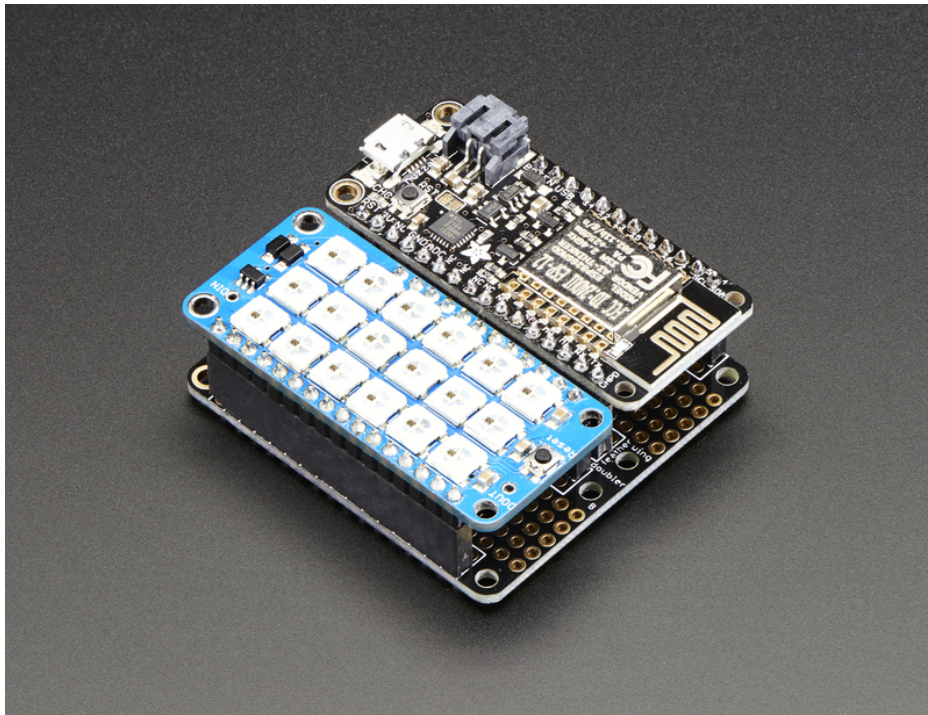


The most common method of attachment for the Proto is putting stacking or female headers on the Featherwing and then putting the Proto on top:



But don't forget, you can also put the stacking headers on the Proto wing and stack the Feather on top of it!

For the Doubler, you can use it side-by-side



By soldering female or stacking headers onto the doubler, but you could also have multiple stacking wings.

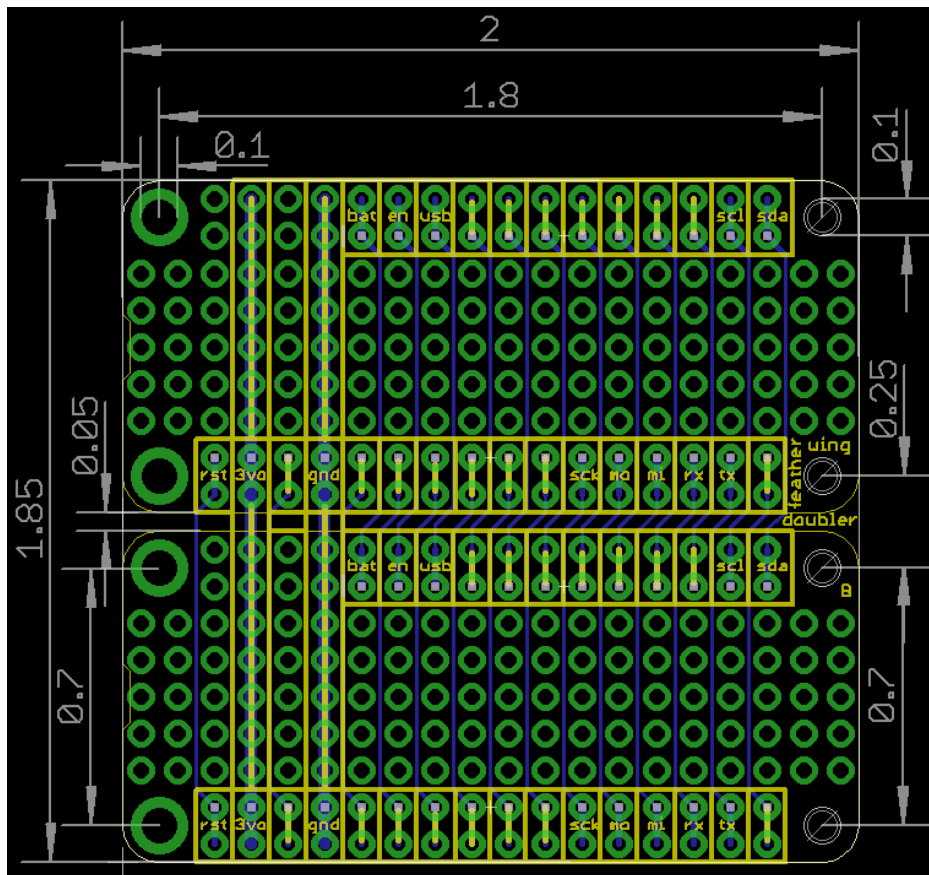
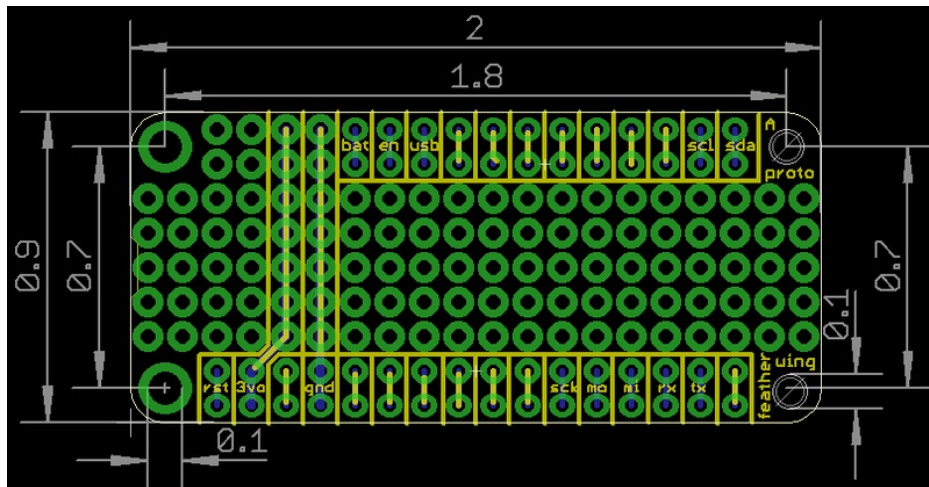


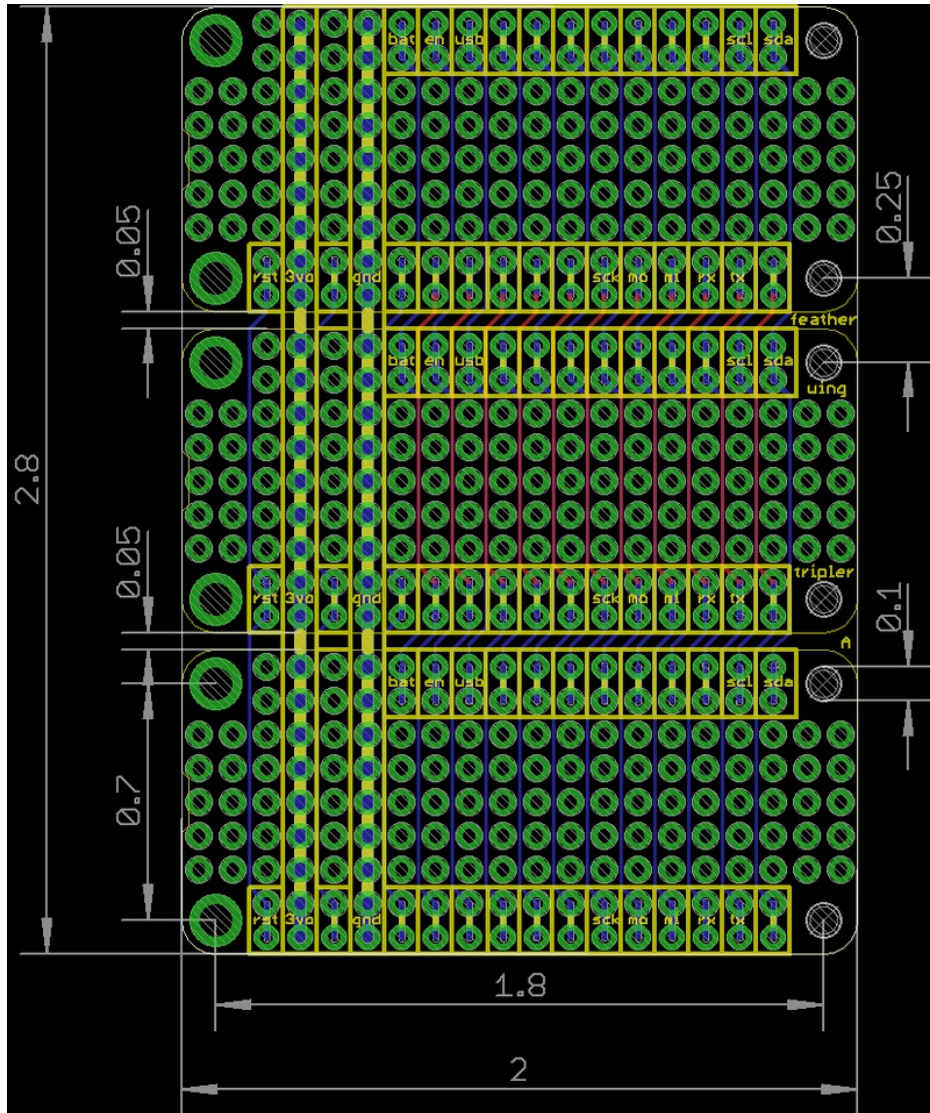
## Downloads

- Original EagleCAD files can be found here, if you want to make your own custom featherwings, simply remove the prototyping holes you dont need (<https://adafru.it/kC0>)
- Fritzing objects available in the Adafruit Fritzing Library (<https://adafru.it/aP3>)

## Fabrication prints

Dimensions in inches





## Данный компонент на территории Российской Федерации

### Вы можете приобрести в компании MosChip.

Для оперативного оформления запроса Вам необходимо перейти по данной ссылке:

<http://moschip.ru/get-element>

Вы можете разместить у нас заказ для любого Вашего проекта, будь то серийное производство или разработка единичного прибора.

В нашем ассортименте представлены ведущие мировые производители активных и пассивных электронных компонентов.

Нашей специализацией является поставка электронной компонентной базы двойного назначения, продукции таких производителей как XILINX, Intel (ex.ALTERA), Vicor, Microchip, Texas Instruments, Analog Devices, Mini-Circuits, Amphenol, Glenair.

Сотрудничество с глобальными дистрибьюторами электронных компонентов, предоставляет возможность заказывать и получать с международных складов практически любой перечень компонентов в оптимальные для Вас сроки.

На всех этапах разработки и производства наши партнеры могут получить квалифицированную поддержку опытных инженеров.

Система менеджмента качества компании отвечает требованиям в соответствии с ГОСТ Р ИСО 9001, ГОСТ РВ 0015-002 и ЭС РД 009

### Офис по работе с юридическими лицами:

105318, г.Москва, ул.Щербаковская д.3, офис 1107, 1118, ДЦ «Щербаковский»

Телефон: +7 495 668-12-70 (многоканальный)

Факс: +7 495 668-12-70 (доб.304)

E-mail: [info@moschip.ru](mailto:info@moschip.ru)

Skype отдела продаж:

moschip.ru

moschip.ru\_4

moschip.ru\_6

moschip.ru\_9