

TPS5430EVM-342 2.25-A, Inverting Buck-Boost Regulator Evaluation Module

Contents

1	Introduction	1
2	Test Setup and Results	3
3	Board Layout	9
4	Schematic and Bill of Materials.....	11

List of Figures

1	Measured Efficiency, TPS5430	4
2	Load Regulation.....	5
3	Load Transient Response, TPS5430	6
4	Measured Loop Response, TPS5430, $V_{IN} = 12\text{ V}$	7
5	Measured Output Voltage Ripple, TPS5430	8
6	Power Up, V_{OUT} Relative to V_{IN}	9
7	Top-side Layout	10
8	Bottom-side Layout (View from Top Side)	10
9	Top-side Assembly	11
10	TPS5430EVM-342 Schematic.....	11

List of Tables

1	Input Voltage and Output Current Summary	2
2	TPS5430EVM-342 Performance Specification Summary	2
3	Output Voltages Available	3
4	EVM Connectors and Test Points	3
5	TPS5430EVM-342 Bill of Materials	12

1 Introduction

This guide contains TPS5430 background information and TPS5430EVM-342 evaluation module (EVM) support documentation. Also the performance specifications, a schematic diagram, and the bill of materials for the TPS5430EVM-342 are included.

1.1 Background

The TPS5430 dc/dc converter is designed to provide up to a 3.0 A output from an input voltage source of 5.5 V to 36 V. [Table 1](#) provides the rated input voltage and output current range for the evaluation module. This EVM is designed to demonstrate using the TPS5430 regulator in an inverting buck-boost application and does not reflect the entire design range of input and output voltages that can be used with this part. The switching frequency is internally set at a nominal 500k Hz. The high-side MOSFET is incorporated

inside the TPS5430 package along with the gate drive circuitry. The low drain-to-source on resistance of the MOSFET helps the TPS5430 to achieve high efficiencies and keep the junction temperature low at high output currents. The compensation components are internal to the integrated circuit (IC), whereas an external divider permits an adjustable output voltage. Additionally, the TPS5430 provides an enable input. The absolute maximum input voltage is 24 V.

Table 1. Input Voltage and Output Current Summary

EVM	INPUT VOLTAGE RANGE	OUTPUT CURRENT RANGE
TPS5430EVM-342	$V_{IN} = 10.8 \text{ V to } 19.8 \text{ V}$	0 A to 2.25 A

1.2 Reference Information

- Using a buck converter in an inverting buck-boost topology ([SLYT283](#)) technical brief.
- Using the TPS5430 As An Inverting Buck Boost Converter ([SLVA257](#)) application report.
- 3-A, WIDE INPUT RANGE, STEP-DOWN SWIFT™ CONVERTER ([SLVS632](#)) data sheet for the TPS5430 and TPS5431.

1.3 Performance Specification Summary

[Table 2](#) provides a summary of the TPS5430EVM-342 performance specifications. Specifications are given for an input voltage of $V_{IN} = 12 \text{ V}$ and an output voltage of -5 V , unless otherwise specified. The TPS5430EVM-342 is designed and tested for $V_{IN} = 10.8 \text{ V to } 19.8 \text{ V}$. The ambient temperature is 25°C for all measurements, unless otherwise noted. Maximum input voltage for the TPS5430EVM-342 is 24 V .

Table 2. TPS5430EVM-342 Performance Specification Summary

SPECIFICATION		TEST CONDITIONS	MIN	TYP	MAX	UNIT
VIN voltage range			10.8	12 or 15	19.8	V
Output voltage set point				-5.0		V
Output current range		$V_{IN} = 15 \text{ V}$	0		2.25	A
Load regulation		$V_{IN} = 3.3 \text{ V}, I_O = 0 \text{ A to } 3 \text{ A}$		$\pm 0.02\%$		
Load transient response	Voltage change	$I_O = 0.75 \text{ A to } 2.25 \text{ A}$		-50		mV
	Recovery time			120		ms
	Voltage change	$I_O = 2.25 \text{ A to } 0.75 \text{ A}$		+50		mV
	Recovery time			120		ms
Loop bandwidth		$V_{IN} = 12 \text{ V}, I_O = 2 \text{ A}$		11.21		kHz
Phase margin		$V_{IN} = 12 \text{ V}, I_O = 2 \text{ A}$		73		°
Output ripple voltage		$V_{IN} = 12 \text{ V}, I_O = 2 \text{ A}$		100		mVpp
Output rise time				8		ms
Operating frequency				500		kHz
Max efficiency		$V_{IN} = 11 \text{ V}, V_O = -5 \text{ V}, I_O = 0.8 \text{ A}$		87%		

1.4 Modifications

The TPS5430EVM-342 is designed to demonstrate the TPS5430 configured as an inverting buck-boost converter. A few changes can be made to this module.

1.4.1 Output Voltage Setpoint

To change the output voltage of the EVM, it is necessary to change the value of resistor R3. Changing the value of R3 can change the output voltage below about -1.25 V . The value of R3 for a specific output voltage can be calculated using [Equation 1](#).

$$R2 = 10 \text{ k}\Omega \times \frac{1.221 \text{ V}}{V_O - 1.221 \text{ V}} \quad (1)$$

Table 3 lists the R3 values for some common output voltages. The values given in Table 3 are standard values, not the exact value calculated using Equation 1.

CAUTION

V_{IN} must be in a range so that the minimum on-time is greater than 200 ns, and the maximum duty cycle is less than 87%.

Table 3. Output Voltages Available

Output Voltage (V)	R ₃ Value (kΩ)
-1.8	21.5
-2.5	9.53
-3.3	5.90
-5	3.24

1.4.2 Input Voltage Range

The EVM is designed to operate from a nominal 12 V, 15 V, or 18 V \pm 10% input voltage. The TPS5430 is specified to operate over an input voltage range of 5.5 V to 36 V. The EVM may not be operated over this range without damage as the input bypass capacitor is rated at 25 V. This capacitor was chosen for its small package size. Additionally, the voltage differential from input to output cannot exceed the maximum operating range of the input voltage, 36 V.

2 Test Setup and Results

This section describes how to properly connect, set up, and use the TPS5430EVM-342 evaluation module. The section also includes test results typical for the TPS5430EVM-342 and covers efficiency, output voltage regulation, load transients, loop response, output ripple, input ripple, and startup.

2.1 Input / Output Connections

The TPS5430EVM-342 is provided with input/output connectors and test points as shown in Table 4. A power supply capable of supplying 3 A should be connected to J1 through a pair of 20 AWG wires. The load should be connected to J2 through a pair of 20 AWG wires. The maximum load current capability should be 2.25 A. Wire lengths should be minimized to reduce losses in the wires. Test-point TP1 provides a place to monitor the V_{IN} input voltages with TP2 providing a convenient ground reference. TP5 is used to monitor the output voltage with TP4 as the ground reference.

Table 4. EVM Connectors and Test Points

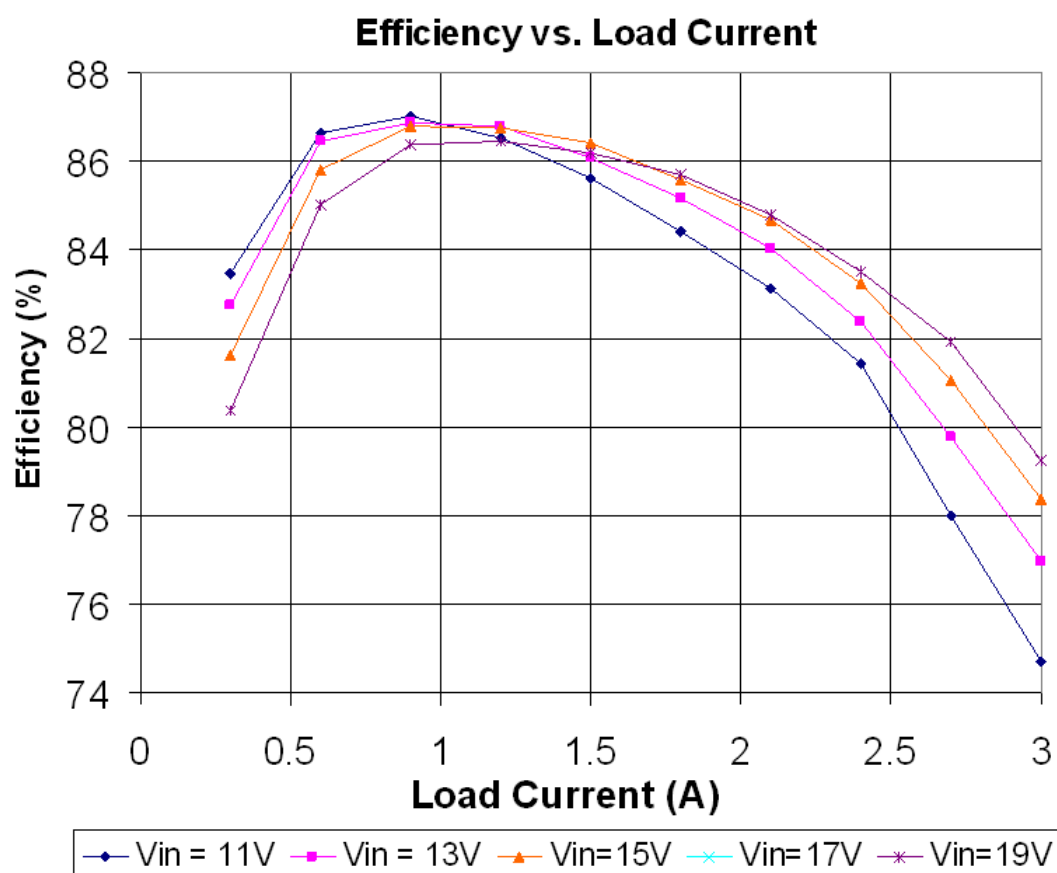
Reference Designator	Function
J1	V_{IN} , 12 V nominal, 10.8 V to 19.8 V
J2	OUT, -5 V at 2.25A maximum
JP1	2-pin header for enable. Connect EN to the -5 V output to disable, open to enable.
TP1	V_{IN} test point at V_{IN} connector
TP2	GND test point at V_{IN}
TP3	PH test point
TP4	GND test point at OUT connector

Table 4. EVM Connectors and Test Points (continued)

Reference Designator	Function
TP5	Output voltage test point at OUT connector
TP6	Test point between voltage divider network and R1. Used for loop response measurements.

2.2 Efficiency

The TPS5430EVM-342 efficiency peaks at load current of about 0.8 A, and then decreases as the load current increases towards full load. [Figure 1](#) shows the efficiency for the TPS5430EVM-342 at an ambient temperature of 25°C. The efficiency is lower at higher ambient temperatures, due to temperature variation in the drain-to-source resistance of the MOSFETs.


Figure 1. Measured Efficiency, TPS5430

2.3 Output Voltage Regulation

Figure 2 displays the output voltage load regulation of the TPS5430EVM-342. Measurements were taken at 25°C ambient temperature.

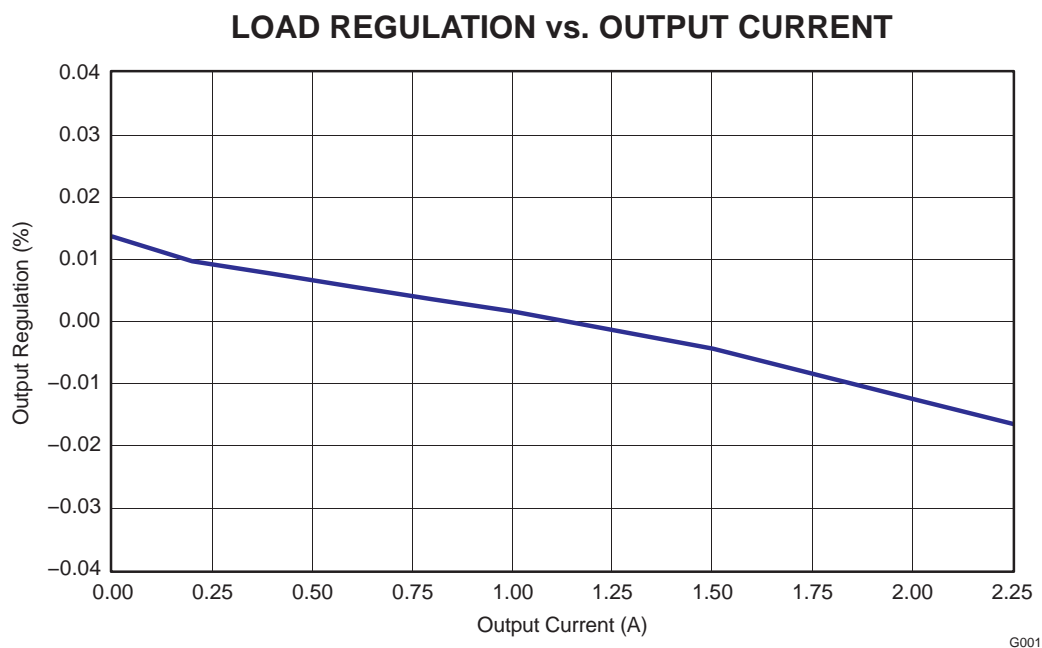


Figure 2. Load Regulation

2.4 Load Transients

Figure 3 shows the TPS5430EVM-342 response to load transients. The current step is from 25% to 100% of maximum-rated load. Total peak-to-peak voltage variation is shown with ripple and noise on the output.

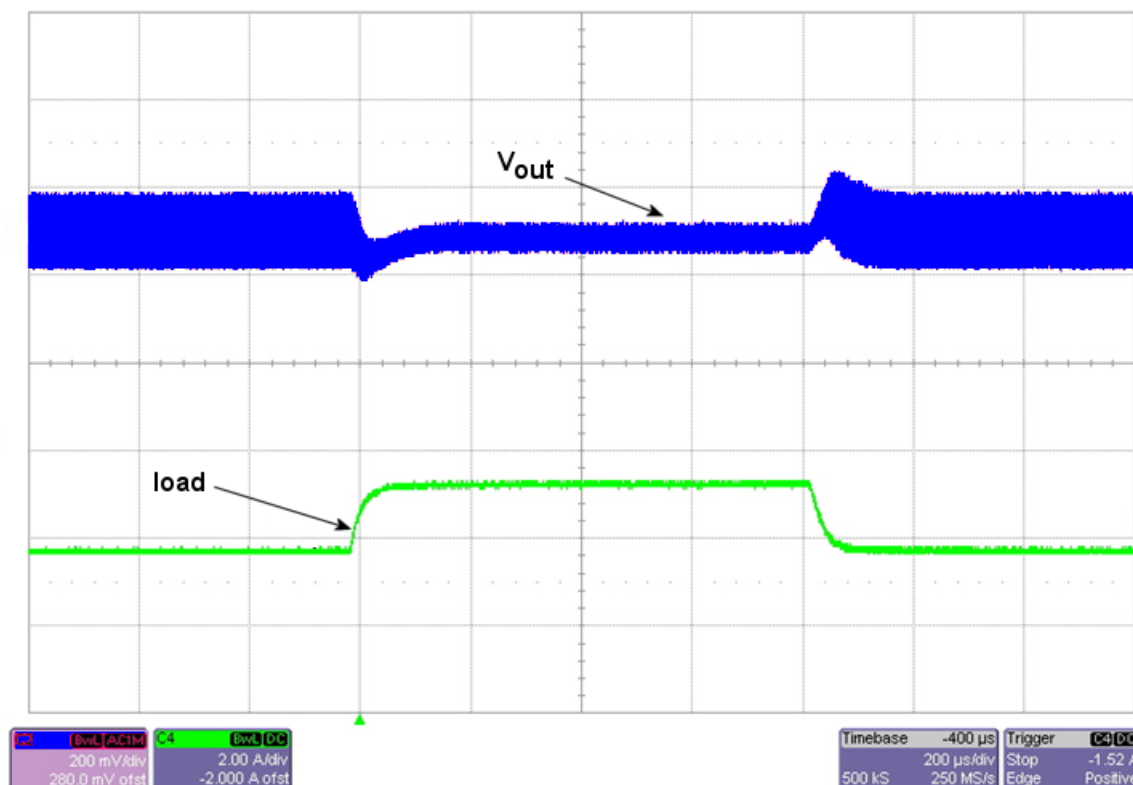


Figure 3. Load Transient Response, TPS5430

2.5 Loop Characteristics

Figure 4 shows the TPS5430EVM-342 loop-response characteristics. Gain and phase plots display the V_{IN} voltage of 10.8 V and 19.8 V.

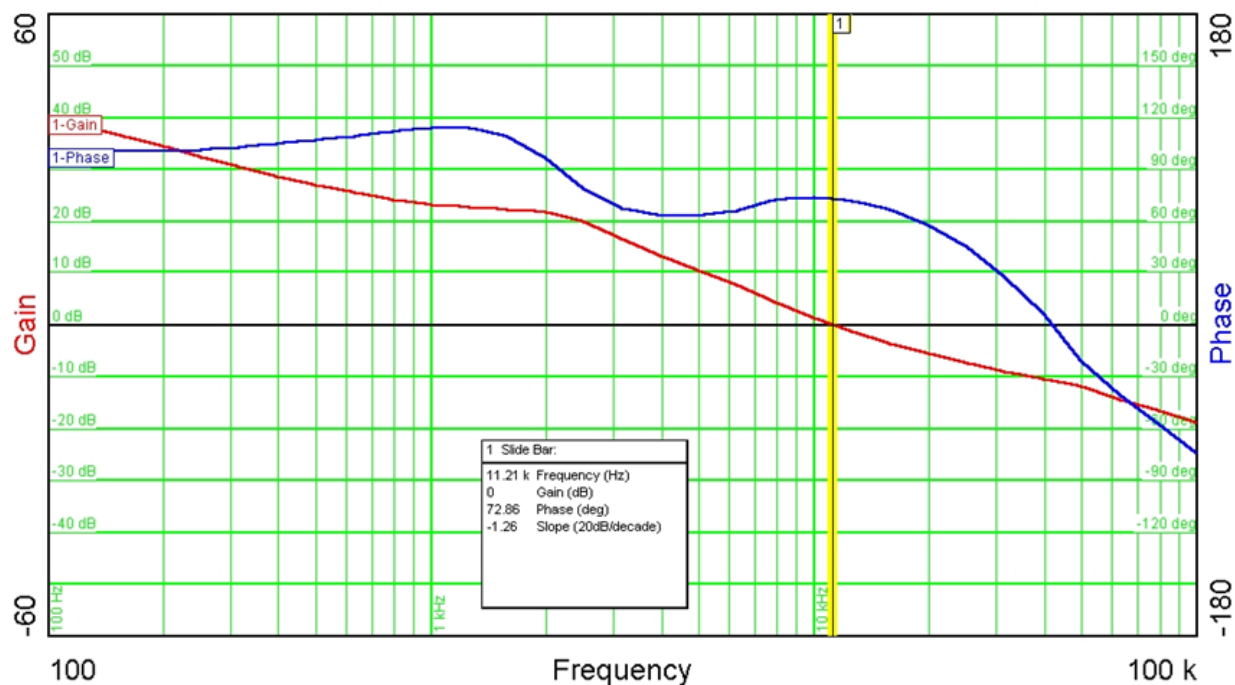


Figure 4. Measured Loop Response, TPS5430, $V_{IN} = 12$ V

2.6 Output Voltage Ripple

Figure 5 displays the TPS5430EVM-342 output voltage ripple. The input voltage is $V_{IN} = 12$ V for the TPS5430. Output current is the rated full load of 3 A. Voltage is measured directly across output capacitors.

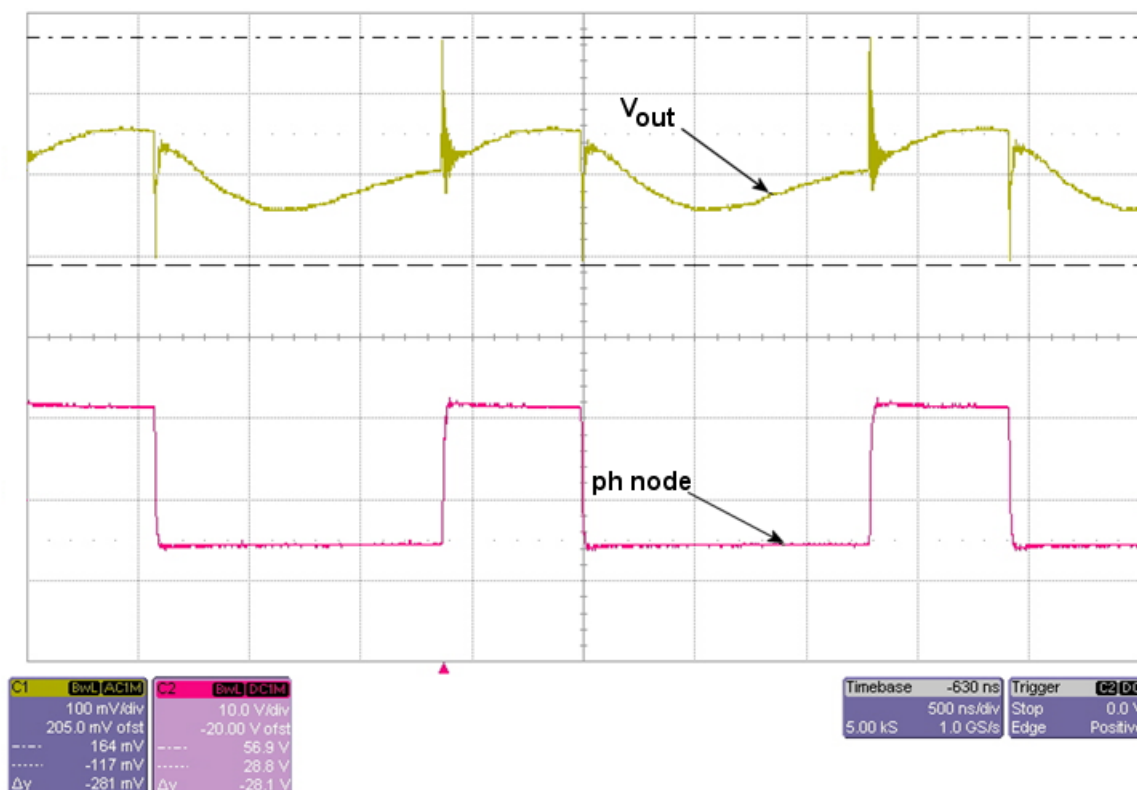


Figure 5. Measured Output Voltage Ripple, TPS5430

2.7 Powering Up

Figure 6 provides the TPS5430EVM-342 start-up waveforms. The top trace shows V_{IN} whereas the bottom trace shows V_{OUT} . V_{IN} charges up from 0 V toward 12 V. When the input voltage reaches the internally set UVLO threshold voltage, the slow-start sequence begins. After a delay, the internal reference begins to ramp up linearly at the internally set slow-start rate towards 1.221 V, and the output ramps up toward the set voltage of 5 V. The output can be inhibited by using a jumper at JP1 to tie EN to GND. When the jumper is removed, EN is released and the slow-start voltage begins to ramp up at the internally set rate. When the EN voltage reaches the enable-threshold voltage of 1.06 V, the start-up sequence begins as described.

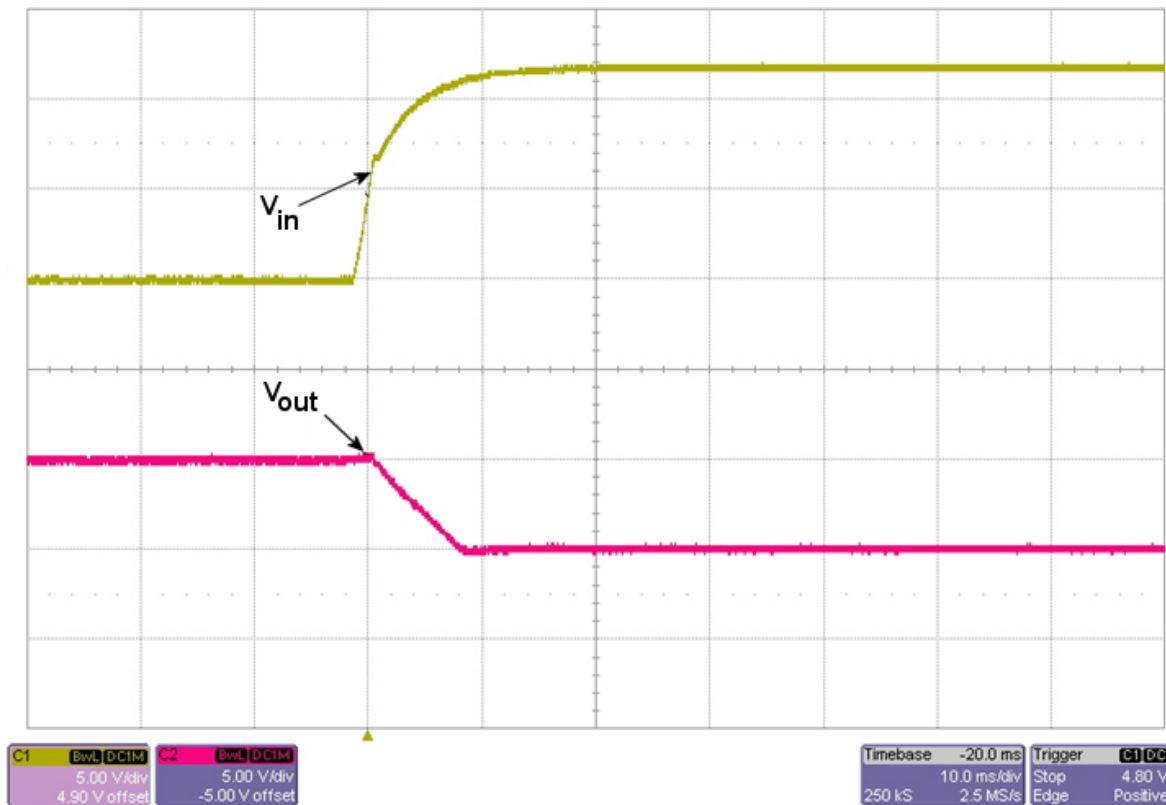


Figure 6. Power Up, V_{OUT} Relative to V_{IN}

3 Board Layout

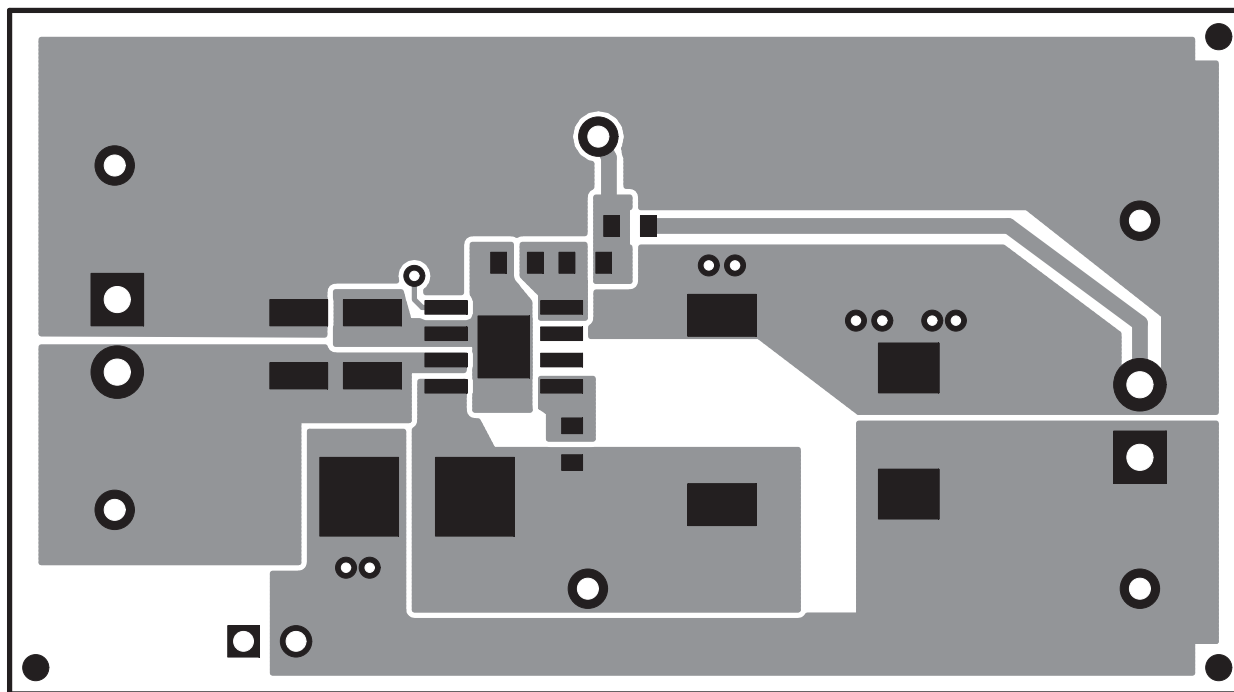
This section describes the TPS5430EVM-342 board layout and layer illustrations.

3.1 Layout

Figure 7 through Figure 9 display the board layout for the TPS5430EVM-342. The topside layer of the TPS5430EVM-342 is laid out in a manner typical of a user application. The top and bottom layers are 2-oz. copper.

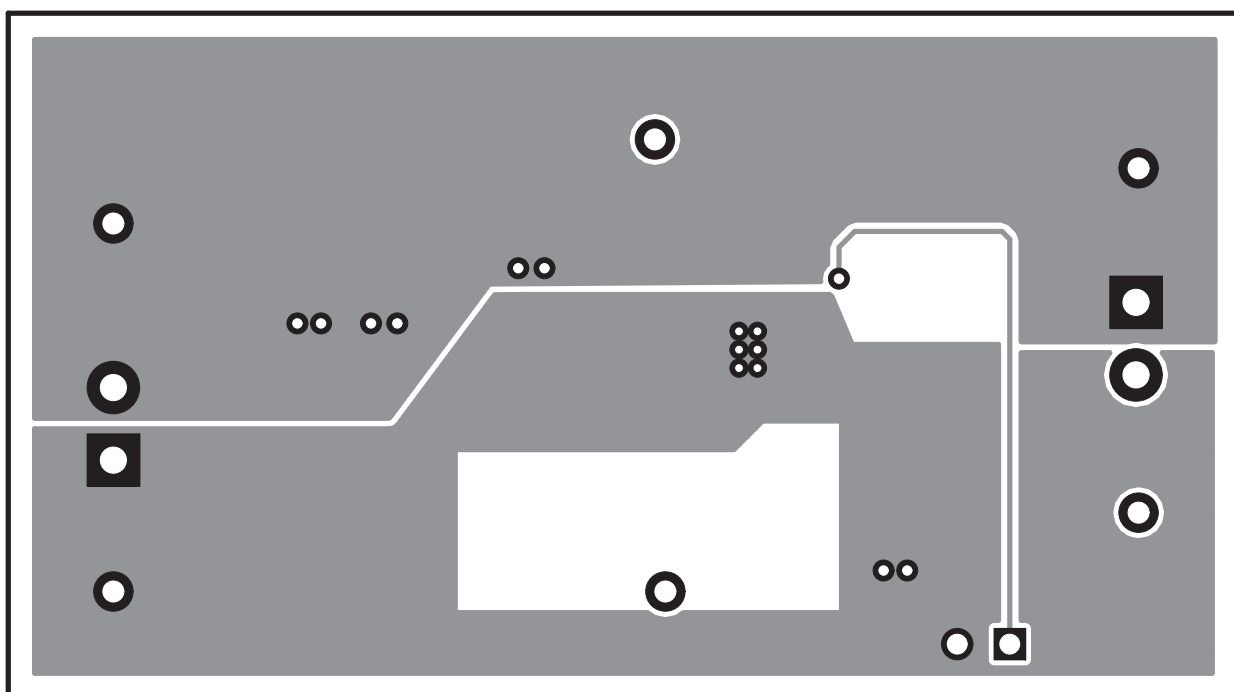
The top layer contains the main power traces for V_{IN} , V_{OUT} , and V_{PHASE} . Also on the top layer are connections for the remaining pins of the TPS5430 and a large area filled with ground. The bottom layer contains ground and some signal routing. The top and bottom and internal ground traces are connected with multiple vias placed around the board including four vias directly under the TPS5430 device to provide a thermal path from the PowerPAD™ land to ground.

The input decoupling capacitor (C1) and bootstrap capacitor (C3) are all located as close to the IC as possible. In addition, the voltage set point resistor divider components are also kept close to the IC. The voltage divider network ties to the output voltage at the point of regulation, adjacent to the output capacitor C3.



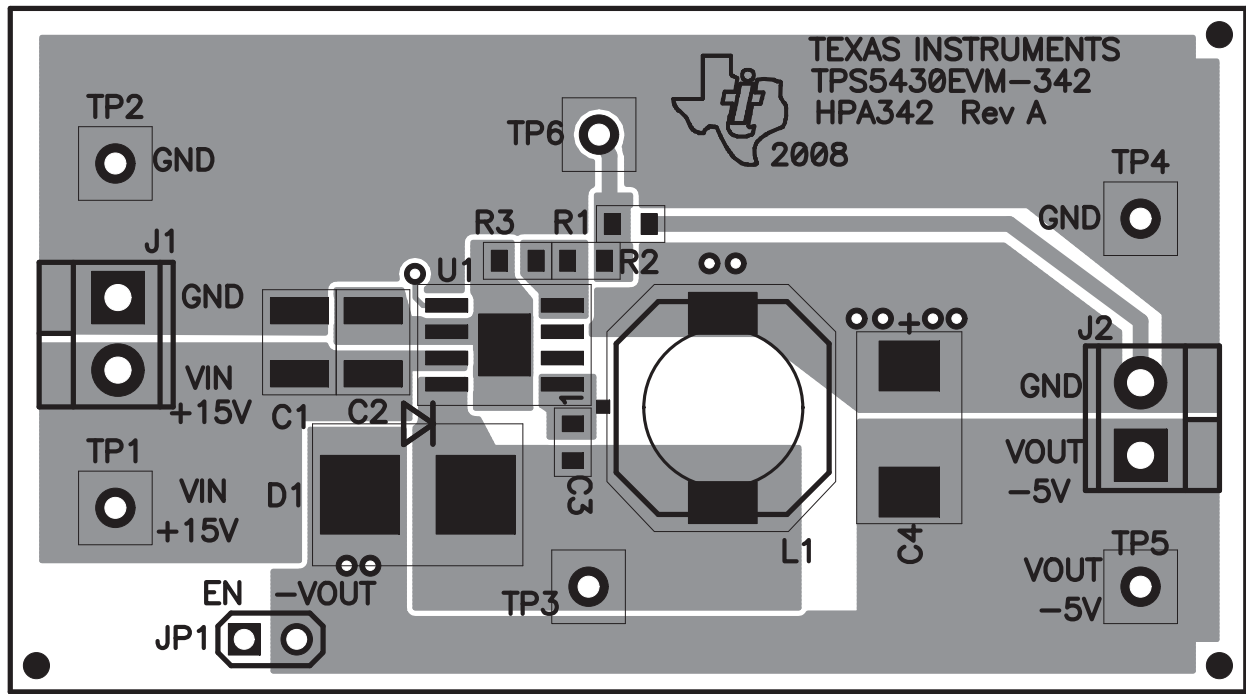
K001

Figure 7. Top-side Layout



K002

Figure 8. Bottom-side Layout (View from Top Side)



K003

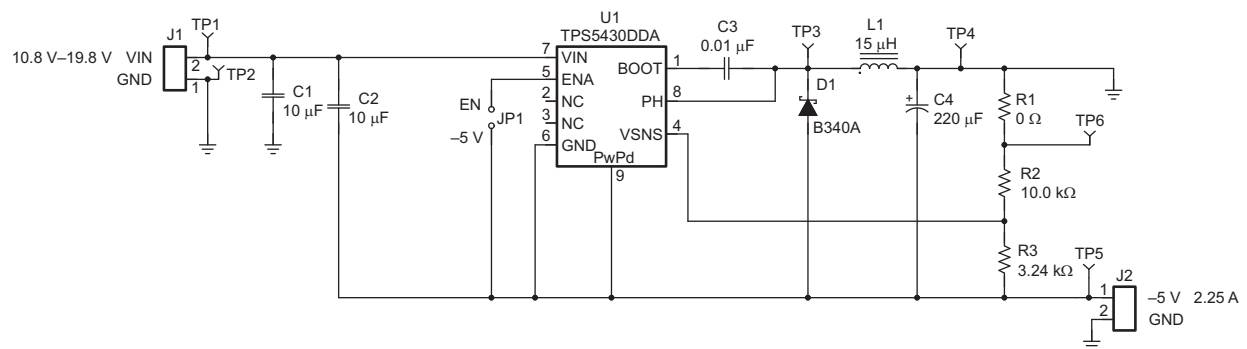
Figure 9. Top-side Assembly

4 Schematic and Bill of Materials

This section describes the TPS5430EVM-342 schematic and itemizes the bill of materials.

4.1 Schematic

Figure 10 displays the TPS5430EVM-342 schematic.



S001

Figure 10. TPS5430EVM-342 Schematic

4.2 Bill of Materials

Table 5 itemizes the TPS5430EVM-342 bill of materials.

Table 5. TPS5430EVM-342 Bill of Materials

Count	REF DES	Value	Description	Size	Part Number	MFR
2	C1, C2	10 μ F	Capacitor, Ceramic, 25 V, X7R, 10%	1210	C3225X7R1E106K	TDK
1	C3	0.01 μ F	Capacitor, Ceramic, 50 V, X7R, 10%	0603	C1608X7R1H103K	TDK
1	C4	220 μ F	Capacitor, POSCAP, 10 V, 40 milliohm, 20%	7343(D)	10TPB220M	Sanyo
1	D1	B340A	Diode, Schottky Barrier Rectifier, 3 A, 40 V	SMA	B340A	Diodes Inc
2	J1, J2	ED1514	Terminal Block, 2 pin, 6 A, 3.5 mm	0.27 x 0.25	ED1514	OST
1	JP1	PTC36SA AN	Header, 2-pin, 100 mil spacing, (36-pin strip)	0.100 inch x 2	PTC36SAAN	Sullins
1	L1	15 μ H	Inductor, SMT, 3.4 A, 41 milliohm	0.405 sq inch	CDRH105R-150	Sumida
1	R1	0 Ω	Resistor, Chip, 1/16W, 1%	0603	Std	Std
1	R2	10.0 k Ω	Resistor, Chip, 1/16W, 1%	0603	Std	Std
1	R3	3.24 k Ω	Resistor, Chip, 1/16W, 5%	0603	Std	Std
4	TP1, TP3, TP5, TP6	5000	Test Point, Red, Thru Hole Color Keyed	0.100 x 0.100 inch	5000	Keystone
2	TP2, TP4	5001	Test Point, Black, Thru Hole Color Keyed	0.100 x 0.100 inch	5001	Keystone
1	U1	TPS5430 DDA	IC, Switching Step-Down Regulator, 5.5 V - 36 V, 3 A	SO8[DDA]	TPS5430DDA	TI
1	–		PCB, 1.3 inch x 2.35 inch x 0.062 In		HPA136	Any
1	–		Shunt, 100 mil, Black	0.100	929950-00	3M

EVALUATION BOARD/KIT IMPORTANT NOTICE

Texas Instruments (TI) provides the enclosed product(s) under the following conditions:

This evaluation board/kit is intended for use for **ENGINEERING DEVELOPMENT, DEMONSTRATION, OR EVALUATION PURPOSES ONLY** and is not considered by TI to be a finished end-product fit for general consumer use. Persons handling the product(s) must have electronics training and observe good engineering practice standards. As such, the goods being provided are not intended to be complete in terms of required design-, marketing-, and/or manufacturing-related protective considerations, including product safety and environmental measures typically found in end products that incorporate such semiconductor components or circuit boards. This evaluation board/kit does not fall within the scope of the European Union directives regarding electromagnetic compatibility, restricted substances (RoHS), recycling (WEEE), FCC, CE or UL, and therefore may not meet the technical requirements of these directives or other related directives.

Should this evaluation board/kit not meet the specifications indicated in the User's Guide, the board/kit may be returned within 30 days from the date of delivery for a full refund. **THE FOREGOING WARRANTY IS THE EXCLUSIVE WARRANTY MADE BY SELLER TO BUYER AND IS IN LIEU OF ALL OTHER WARRANTIES, EXPRESSED, IMPLIED, OR STATUTORY, INCLUDING ANY WARRANTY OF MERCHANTABILITY OR FITNESS FOR ANY PARTICULAR PURPOSE.**

The user assumes all responsibility and liability for proper and safe handling of the goods. Further, the user indemnifies TI from all claims arising from the handling or use of the goods. Due to the open construction of the product, it is the user's responsibility to take any and all appropriate precautions with regard to electrostatic discharge.

EXCEPT TO THE EXTENT OF THE INDEMNITY SET FORTH ABOVE, NEITHER PARTY SHALL BE LIABLE TO THE OTHER FOR ANY INDIRECT, SPECIAL, INCIDENTAL, OR CONSEQUENTIAL DAMAGES.

TI currently deals with a variety of customers for products, and therefore our arrangement with the user **is not exclusive**.

TI assumes **no liability for applications assistance, customer product design, software performance, or infringement of patents or services described herein.**

Please read the User's Guide and, specifically, the Warnings and Restrictions notice in the User's Guide prior to handling the product. This notice contains important safety information about temperatures and voltages. For additional information on TI's environmental and/or safety programs, please contact the TI application engineer or visit www.ti.com/esh.

No license is granted under any patent right or other intellectual property right of TI covering or relating to any machine, process, or combination in which such TI products or services might be or are used.

FCC Warning

This evaluation board/kit is intended for use for **ENGINEERING DEVELOPMENT, DEMONSTRATION, OR EVALUATION PURPOSES ONLY** and is not considered by TI to be a finished end-product fit for general consumer use. It generates, uses, and can radiate radio frequency energy and has not been tested for compliance with the limits of computing devices pursuant to part 15 of FCC rules, which are designed to provide reasonable protection against radio frequency interference. Operation of this equipment in other environments may cause interference with radio communications, in which case the user at his own expense will be required to take whatever measures may be required to correct this interference.

Mailing Address: Texas Instruments, Post Office Box 655303, Dallas, Texas 75265
Copyright © 2008, Texas Instruments Incorporated

EVM WARNINGS AND RESTRICTIONS

It is important to operate this EVM within the input voltage range of 10.8 V to 19.8 V and the output voltage range of fixed at -5 V.

Exceeding the specified input range may cause unexpected operation and/or irreversible damage to the EVM. If there are questions concerning the input range, please contact a TI field representative prior to connecting the input power.

Applying loads outside of the specified output range may result in unintended operation and/or possible permanent damage to the EVM. Please consult the EVM User's Guide prior to connecting any load to the EVM output. If there is uncertainty as to the load specification, please contact a TI field representative.

During normal operation, some circuit components may have case temperatures greater than 90°C. The EVM is designed to operate properly with certain components above 85°C as long as the input and output ranges are maintained. These components include but are not limited to linear regulators, switching transistors, pass transistors, and current sense resistors. These types of devices can be identified using the EVM schematic located in the EVM User's Guide. When placing measurement probes near these devices during operation, please be aware that these devices may be very warm to the touch.

Mailing Address: Texas Instruments, Post Office Box 655303, Dallas, Texas 75265
Copyright © 2008, Texas Instruments Incorporated

IMPORTANT NOTICE

Texas Instruments Incorporated and its subsidiaries (TI) reserve the right to make corrections, modifications, enhancements, improvements, and other changes to its products and services at any time and to discontinue any product or service without notice. Customers should obtain the latest relevant information before placing orders and should verify that such information is current and complete. All products are sold subject to TI's terms and conditions of sale supplied at the time of order acknowledgment.

TI warrants performance of its hardware products to the specifications applicable at the time of sale in accordance with TI's standard warranty. Testing and other quality control techniques are used to the extent TI deems necessary to support this warranty. Except where mandated by government requirements, testing of all parameters of each product is not necessarily performed.

TI assumes no liability for applications assistance or customer product design. Customers are responsible for their products and applications using TI components. To minimize the risks associated with customer products and applications, customers should provide adequate design and operating safeguards.

TI does not warrant or represent that any license, either express or implied, is granted under any TI patent right, copyright, mask work right, or other TI intellectual property right relating to any combination, machine, or process in which TI products or services are used. Information published by TI regarding third-party products or services does not constitute a license from TI to use such products or services or a warranty or endorsement thereof. Use of such information may require a license from a third party under the patents or other intellectual property of the third party, or a license from TI under the patents or other intellectual property of TI.

Reproduction of TI information in TI data books or data sheets is permissible only if reproduction is without alteration and is accompanied by all associated warranties, conditions, limitations, and notices. Reproduction of this information with alteration is an unfair and deceptive business practice. TI is not responsible or liable for such altered documentation. Information of third parties may be subject to additional restrictions.

Resale of TI products or services with statements different from or beyond the parameters stated by TI for that product or service voids all express and any implied warranties for the associated TI product or service and is an unfair and deceptive business practice. TI is not responsible or liable for any such statements.

TI products are not authorized for use in safety-critical applications (such as life support) where a failure of the TI product would reasonably be expected to cause severe personal injury or death, unless officers of the parties have executed an agreement specifically governing such use. Buyers represent that they have all necessary expertise in the safety and regulatory ramifications of their applications, and acknowledge and agree that they are solely responsible for all legal, regulatory and safety-related requirements concerning their products and any use of TI products in such safety-critical applications, notwithstanding any applications-related information or support that may be provided by TI. Further, Buyers must fully indemnify TI and its representatives against any damages arising out of the use of TI products in such safety-critical applications.

TI products are neither designed nor intended for use in military/aerospace applications or environments unless the TI products are specifically designated by TI as military-grade or "enhanced plastic." Only products designated by TI as military-grade meet military specifications. Buyers acknowledge and agree that any such use of TI products which TI has not designated as military-grade is solely at the Buyer's risk, and that they are solely responsible for compliance with all legal and regulatory requirements in connection with such use.

TI products are neither designed nor intended for use in automotive applications or environments unless the specific TI products are designated by TI as compliant with ISO/TS 16949 requirements. Buyers acknowledge and agree that, if they use any non-designated products in automotive applications, TI will not be responsible for any failure to meet such requirements.

Following are URLs where you can obtain information on other Texas Instruments products and application solutions:

Products

Amplifiers	amplifier.ti.com
Data Converters	dataconverter.ti.com
DSP	dsp.ti.com
Clocks and Timers	www.ti.com/clocks
Interface	interface.ti.com
Logic	logic.ti.com
Power Mgmt	power.ti.com
Microcontrollers	microcontroller.ti.com
RFID	www.ti-rfid.com
RF/IF and ZigBee® Solutions	www.ti.com/lprf

Applications

Audio	www.ti.com/audio
Automotive	www.ti.com/automotive
Broadband	www.ti.com/broadband
Digital Control	www.ti.com/digitalcontrol
Medical	www.ti.com/medical
Military	www.ti.com/military
Optical Networking	www.ti.com/opticalnetwork
Security	www.ti.com/security
Telephony	www.ti.com/telephony
Video & Imaging	www.ti.com/video
Wireless	www.ti.com/wireless

Mailing Address: Texas Instruments, Post Office Box 655303, Dallas, Texas 75265
Copyright © 2008, Texas Instruments Incorporated

Данный компонент на территории Российской Федерации

Вы можете приобрести в компании MosChip.

Для оперативного оформления запроса Вам необходимо перейти по данной ссылке:

<http://moschip.ru/get-element>

Вы можете разместить у нас заказ для любого Вашего проекта, будь то серийное производство или разработка единичного прибора.

В нашем ассортименте представлены ведущие мировые производители активных и пассивных электронных компонентов.

Нашей специализацией является поставка электронной компонентной базы двойного назначения, продукции таких производителей как XILINX, Intel (ex.ALTERA), Vicor, Microchip, Texas Instruments, Analog Devices, Mini-Circuits, Amphenol, Glenair.

Сотрудничество с глобальными дистрибьюторами электронных компонентов, предоставляет возможность заказывать и получать с международных складов практически любой перечень компонентов в оптимальные для Вас сроки.

На всех этапах разработки и производства наши партнеры могут получить квалифицированную поддержку опытных инженеров.

Система менеджмента качества компании отвечает требованиям в соответствии с ГОСТ Р ИСО 9001, ГОСТ РВ 0015-002 и ЭС РД 009

Офис по работе с юридическими лицами:

105318, г.Москва, ул.Щербаковская д.3, офис 1107, 1118, ДЦ «Щербаковский»

Телефон: +7 495 668-12-70 (многоканальный)

Факс: +7 495 668-12-70 (доб.304)

E-mail: info@moschip.ru

Skype отдела продаж:

moschip.ru

moschip.ru_4

moschip.ru_6

moschip.ru_9