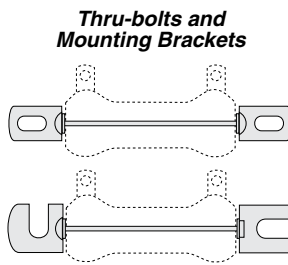
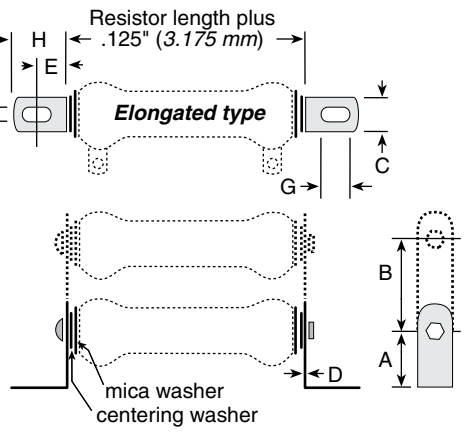
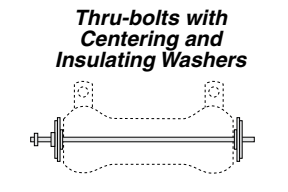
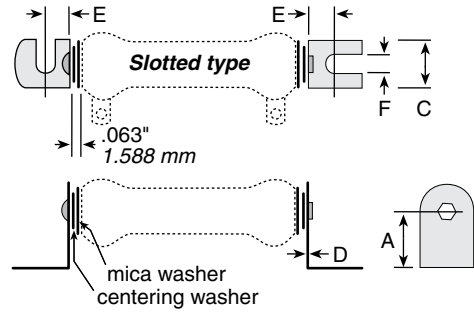
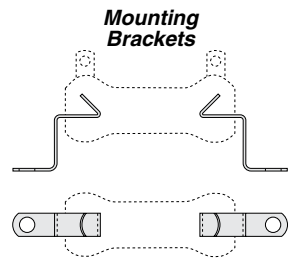


Mounting Hardware

See ohmite.com
for pictorial views

For 200, 210, 270 and 280 Series



THRU-BOLTS AND MOUNTING BRACKETS

Sturdy plated steel brackets, along with thru-bolts, centering washers and insulating washers (included), allow for secure mounting of 210 type and 270 type resistors. Mounting brackets are available in either slotted (one with end-slot/one with side-slot) or elongated styles.

Type	Dimensions								Std. Core Length	Bolt Length
	A	B	C	D	E	F	G	H		
Slotted										
6101—E	0.781"	—	0.75"	0.031"	0.438"	0.25"	—	—	1 3/4"	2 1/4"
6104—E	0.781"	—	0.75"	0.031"	0.438"	0.25"	—	—	2"	2 1/2"
6110—E	1"	—	1.125"	0.063"	0.813"	0.313"	—	—	2 1/4"	2 3/4"
Elongated										
6120—E	1"	—	0.5"	0.031"	0.422"	0.219"	.438	.750	4"	4 3/4"
6126—E	1.5"	—	1.25"	0.063"	0.438"	0.281"	.563	.875	6"	6 5/8"
6127—E	1.5"	2"	1.25"	0.063"	0.438"	0.281"	.563	.875	6 1/2"	7"
6128—E	1.5"	2"	1.25"	0.063"	0.438"	0.281"	.563	.875	8 1/2"	9 1/8"
6129—E	1.5"	2"	1.25"	0.063"	0.438"	0.281"	.563	.875	10 1/2"	11 1/8"

ORDERING INFORMATION

Slotted				Elongated			
RoHS Compliant				RoHS Compliant			
6104-M-6 1/2-E				6121-D-1 3/4-E			
No. of Resistors	Bracket	Core Code	Standard Core Length (in)	No. of Resistors	Bracket	Core Code	Standard Core Length (in)
1	6101	K	2	1	6120	D H K	1
2	6102		4	2	6121		1 3/4
3	6103		6				2
1	6104	M	2	1	6122	M N P	2
2	6105		4	2	6123		4
3	6106		6 1/2	3	6124		6 1/2
				4	6125		
1	6110A	N	4	1	6126	P	8 1/2
2	6111A		6	2	6127		10 1/2
3	6112A			3	6128		
				4	6129		
1	6110	P	8 1/2	1	6126	P	8 1/2
2	6111		10 1/2	2	6127		10 1/2
3	6112			3	6128		
				4	6129		
1	6113B	R	8 1/2				
			10 1/2				
			11 3/4				
1	6114	S	12				
			15				
			20				

MOUNTING BRACKETS

Brackets fit inside cores of 200, 210 and 270 type resistors and remain in place by spring tension. Standard brackets are plated steel and have no suffix to part number. Spring steel brackets are indicated with an "S" suffix following part number.

Standard	Part number	Spring steel	Mtg screw size (max.)	For resistors (power ratings)
✦ 5E	✦ 5SE	✦ 5SE	6	8, 12 watt
✓ 7E	✦ 7SE	✦ 7SE	6	20 watt
✦ 9E	✦ 9SE	✦ 9SE	6	25, 50, 75 watt
✦ 12E	✦ 12SE	✦ 12SE	10	100 watt
✦ 18E	✦ 18SE	✦ 18SE	10	175, 225 watt

THRU BOLTS

Thru-Bolts, with centering mica insulating washers, permit perpendicular mounting of 200, 210 and 270 type resistors to panels up to 0.25" thick.

Part No.	Bolt size Length	No.	For resistors (power rating)
✦ 7PA5E	1.75"	8	8 watt
✦ 7PA10E	2.5"	8	12 watt
✦ 7PA20E	2.75"	8	20 watt
✦ 7PA25E	2.75"	10	25 watt
✦ 7PA50E	4.75"	10	50 watt
✦ 7PA75E	6.75"	10	75 watt
✦ 7PA100E	7.313"	10	100 watt
✦ 7PA160E	9.5"	0.25"	175 watt
✦ 7PA200E	11.5"	0.25"	225 watt

WASHERS

Metal Centering

Part No.	Diameter Outer	Diameter Inner	For max. screw size	For resistors (power ratings)
✦ 6000E	0.563"	0.190"	#10	25, 50, 75 watt
✦ 6001E	0.75"	0.190"	#10	100 watt
✦ 6003E	1.125"	0.250"	0.25"	175, 225 watt

Mica insulating

Part No.	Diameter Outer	Diameter Inner	For resistors (power ratings)
✦ 6010E	0.75"	0.063"	25, 50, 75 watt
✦ 6011E*	0.75"	0.313"	25, 50, 75 watt
✦ 6012E	1"	0.063"	100 watt
✓ 6013E*	1"	0.5"	100 watt
✦ 6014E	1.25"	0.063"	core 1" O.D. x 0.625" I.D.
✦ 6015E*	1.25"	0.625"	core 1" O.D. x 0.625" I.D.
✓ 6016E	1.5"	0.063"	175, 225 watt
✦ 6017E*	1.5"	0.75"	175, 225 watt

* Use with centering washers.

ADJUSTABLE LUGS FOR 210 SERIES

One standard screwdriver type adjustable lug is supplied with each unit.

Two types of lugs can be ordered separately: standard or with a silver contact button; both types are available with a screwdriver type lug.

Resistor core diam. (in. / mm)	Standard part numbers	
	Standard	Silver
0.313 / 7.94	✦ 2115E	✦ 2116E
0.563 / 14.3	✦ 2121E	✓ 2123E
0.750 / 19.05	✦ 2125E	✦ 2127E
1.125 / 28.58	✓ 2133E	✦ 2135E

Double thumb screw Lug

(Part Number 2160E) The double thumb screw adjustable lug permits easier adjustment and less chance of damage to resistance wire. Available for 1.125" cores only.

✦ = Most popular Standard values

✓ = Standard values

✦ = Non-Standard values subject to minimum handling charge per item

Данный компонент на территории Российской Федерации

Вы можете приобрести в компании MosChip.

Для оперативного оформления запроса Вам необходимо перейти по данной ссылке:

<http://moschip.ru/get-element>

Вы можете разместить у нас заказ для любого Вашего проекта, будь то серийное производство или разработка единичного прибора.

В нашем ассортименте представлены ведущие мировые производители активных и пассивных электронных компонентов.

Распределительные склады, находящиеся в России, Европе и в Китае, позволяют нам оперативно поставить необходимые компоненты в оптимальные для Вас сроки.

На всех этапах разработки и производства наши партнеры могут получить квалифицированную поддержку опытных инженеров.

Система менеджмента качества компании отвечает требованиям ISO 9001:2011

Офис по работе с юридическими лицами:

107023, г.Москва, Семеновский переулок, д.6, Бизнес-центр «АВС»

Телефон: +7 495 668-12-70 (многоканальный)

Факс: +7 495 668-12-70 (доб.304)

E-mail: info@moschip.ru

Skype отдела продаж:

moschip.ru_3	moschip.ru_6
moschip.ru_4	moschip.ru_7
moschip.ru_11	moschip.ru_8
moschip.ru_12	moschip.ru_9