

Electronic housing - ME 17,5 UT KMGY - 2869427

Please be informed that the data shown in this PDF Document is generated from our Online Catalog. Please find the complete data in the user's documentation. Our General Terms of Use for Downloads are valid (<http://download.phoenixcontact.com>)



Lower part of housing, fully assembled, with metal foot catch.

The illustration shows the green product version

Product Features

- Tool-free mounting
- Large assembly area
- Low design width with a high number of positions
- Same PCB geometry for all design widths
- Recessed labeling areas
- Inflammability class V0 according to UL 94
- Fast mounting on DIN rails according to EN 60715
- Cost savings thanks to easy device production
- Material and part identification embossed on the housing (recyclability)
- Functional earth ground contact (EMC) integrated in the housing base
- Optional BUS connection integrated in the housing, for either parallel or serial contacting
- Metal foot catch
- Electronic components can be partially removed



Key commercial data

| | |
|--------------------------------------|-----------|
| Packing unit | 1 1 |
| Minimum order quantity | 10 1 |
| Weight per Piece (excluding packing) | 42.46 GRM |
| Custom tariff number | 85369010 |
| Country of origin | Germany |

Technical data

General

Electronic housing - ME 17,5 UT KMGY - 2869427

Technical data

General

| | |
|------------------|-------------------|
| Housing type | Component housing |
| Housing material | Polyamide |
| Color | light gray |

Ambient conditions

| | |
|---------------------------------|-------------------|
| Ambient temperature (operation) | -40 °C ... 105 °C |
|---------------------------------|-------------------|

Dimensions

| | |
|-----------------------|----------|
| Length | 99 mm |
| Constructional height | 114.5 mm |
| Width | 17.5 mm |

Technical data

| | |
|---------------------------------------------------------------|--------------|
| Inflammability class according to UL 94 | V0 |
| Power dissipation at 20°C in the horizontal mounting position | 5.2 W 10.8 W |
| Number of positions | 12 |

Classifications

eCl@ss

| | |
|------------|----------|
| eCl@ss 4.0 | 27180401 |
| eCl@ss 4.1 | 27180401 |
| eCl@ss 5.0 | 27180506 |
| eCl@ss 5.1 | 27180506 |
| eCl@ss 6.0 | 27180802 |
| eCl@ss 7.0 | 27182702 |
| eCl@ss 8.0 | 27182702 |

ETIM

| | |
|----------|----------|
| ETIM 2.0 | EC001031 |
| ETIM 3.0 | EC001031 |
| ETIM 4.0 | EC001031 |
| ETIM 5.0 | EC001031 |

UNSPSC

| | |
|---------------|----------|
| UNSPSC 6.01 | 31261501 |
| UNSPSC 7.0901 | 31261501 |
| UNSPSC 11 | 31261501 |
| UNSPSC 12.01 | 31261501 |

Electronic housing - ME 17,5 UT KMGY - 2869427

Classifications

UNSPSC

| | |
|-------------|----------|
| UNSPSC 13.2 | 31261501 |
|-------------|----------|

Approvals

Approvals

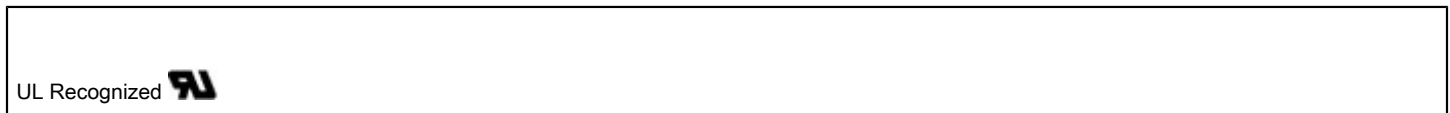
Approvals

UL Recognized

Ex Approvals

Approvals submitted

Approval details



Accessories

Accessories

Coding element

Coding star - CR-MSTB - 1734401



Coding section, inserted into the recess in the header or the inverted plug, red insulating material

Coding profile - CP-MSTB - 1734634



Coding profile, is inserted into the slot on the plug or inverted header, red insulating material

Electronic housing - ME 17,5 UT KMGY - 2869427

Accessories

Component housing center part

Electronic housing - ME 35 UTM - 2908265



Intermediate element for modular extension of the volume of the housing in the pitch. The open intermediate element is 17.5 mm wide.

Electronic housing - ME 35 UTMG - 2908275



Intermediate element for modular extension of the volume of the housing in the pitch. The closed intermediate element is 17.5 mm wide.

Filler plug

Electronic housing - ME B-17,5 MSTBO KMGY - 2853776



Filler plugs, for unoccupied terminal points

Components of electronic housing - ME B-17,5 MKDSO KMGY - 2854115



Filler plugs, for unoccupied terminal points

Ground contact

Electronic housing - ME 17,5 UT KMGY - 2869427

Accessories

Electronic housing - ME FE-CONTACT - 2908294



Functional earth ground contact, for intermediate elements.

Mounting material

Components of electronic housing - ME-SAS - 2853899



Shield connection clamp for printed circuit terminal block

Electronic housing - ME LPZS - 2906911



PCB stop, for soldering onto PCB

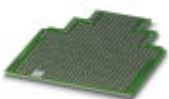
Electronic housing - ME MF 17,5 - 2908281



Metal foot catch, for intermediate elements.

PCB

Electronic housing - ME LP - 2906908



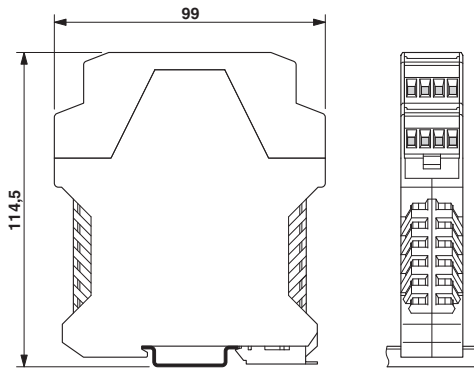
PCB, for custom fitting, with contact to DIN rail (EN 60715)

Electronic housing - ME 17,5 UT KMGY - 2869427

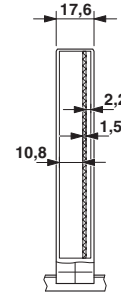
Accessories

Drawings

Dimensioned drawing



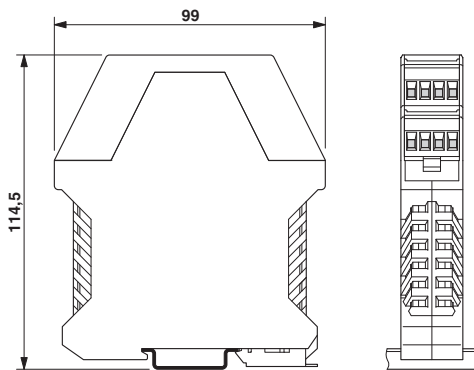
Dimensioned drawing



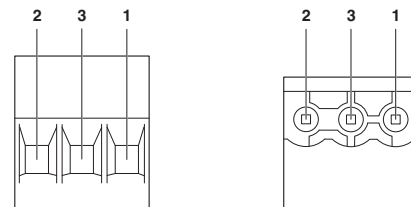
Inner housing dimensions, electronic housing ME 22.5 ...

Dimensions of the electronic housing ME... with double-level upper part

Dimensioned drawing



Schematic diagram

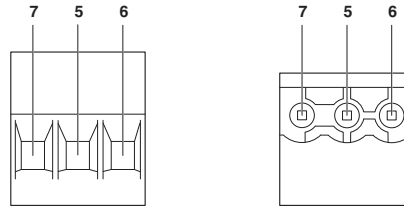


Pin assignment left

Dimensions of the electronic housing ME... with double-level upper part

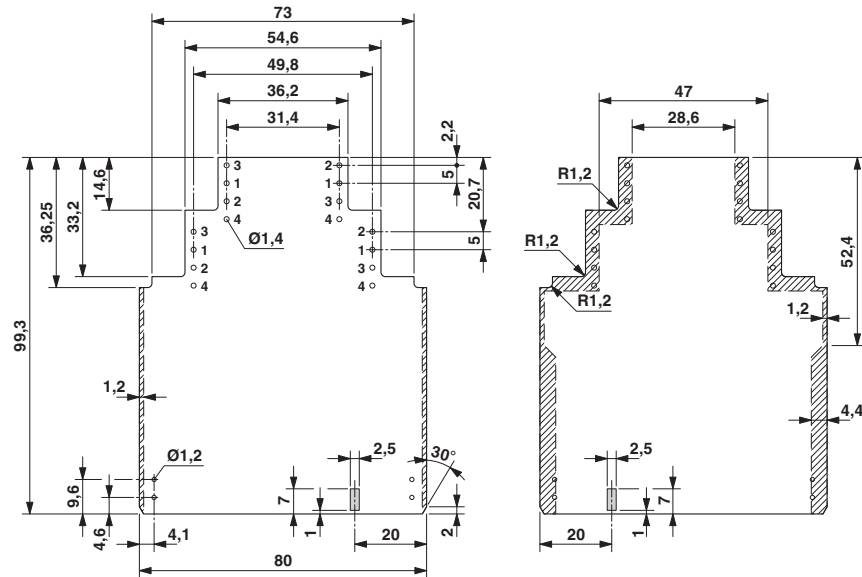
Electronic housing - ME 17,5 UT KMGY - 2869427

Schematic diagram



Pin assignment right

Dimensioned drawing



Dimensioned drawing of the ME... printed circuit board if the double level upper part is used

Данный компонент на территории Российской Федерации

Вы можете приобрести в компании MosChip.

Для оперативного оформления запроса Вам необходимо перейти по данной ссылке:

<http://moschip.ru/get-element>

Вы можете разместить у нас заказ для любого Вашего проекта, будь то серийное производство или разработка единичного прибора.

В нашем ассортименте представлены ведущие мировые производители активных и пассивных электронных компонентов.

Нашей специализацией является поставка электронной компонентной базы двойного назначения, продукции таких производителей как XILINX, Intel (ex.ALTERA), Vicor, Microchip, Texas Instruments, Analog Devices, Mini-Circuits, Amphenol, Glenair.

Сотрудничество с глобальными дистрибьюторами электронных компонентов, предоставляет возможность заказывать и получать с международных складов практически любой перечень компонентов в оптимальные для Вас сроки.

На всех этапах разработки и производства наши партнеры могут получить квалифицированную поддержку опытных инженеров.

Система менеджмента качества компании отвечает требованиям в соответствии с ГОСТ Р ИСО 9001, ГОСТ РВ 0015-002 и ЭС РД 009

Офис по работе с юридическими лицами:

105318, г.Москва, ул.Щербаковская д.3, офис 1107, 1118, ДЦ «Щербаковский»

Телефон: +7 495 668-12-70 (многоканальный)

Факс: +7 495 668-12-70 (доб.304)

E-mail: info@moschip.ru

Skype отдела продаж:

moschip.ru

moschip.ru_4

moschip.ru_6

moschip.ru_9