

Kapton® labels

Tyco Electronics polyimide (Kapton®) labels are all ideal for high temperature labeling requirements such as printed circuit boards. They are suitable for direct wave (bottom side) and IR reflow (top side) PCB applications. Tyco Electronics Kapton® labels are designed to withstand the fluxes, cleaning solvents and molten solder encountered in the manufacture of printed circuit boards. They offer excellent contrast for bar code applications. Tyco Electronics Kapton® labels are suitable for the harshest high temperature applications. For reliable print performance and durability, use with Tyco Electronics's 1330-0619 ribbon.

Features and benefits

- UL Listed: T1K and T2K
- Thermal transfer printable
- High temperature permanent acrylic adhesive

T1K

- Gloss white topcoat
- Withstands surface mount board processes on either the top or bottom side of the board
- Low profile 1 mil film offers polyimide thermal performance at competitive cost
- Ideal for manual apply applications

T2K

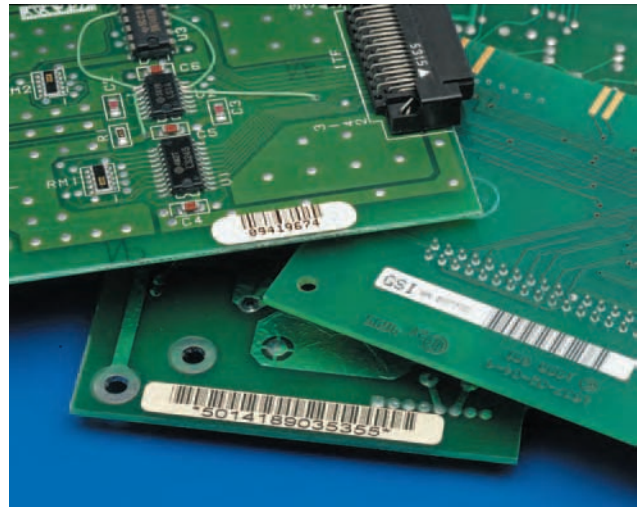
- Gloss white topcoat
- Withstands surface mount board processes on either the top or bottom side of the board
- Ideal for auto apply applications

KTT

- Matte tan topcoat
- Withstands surface mount board processes on either the top or bottom side of the board
- Product approved for aerospace/defense applications.
- Low outgassing

TSK

- High opacity gloss white topcoat
- Withstands surface mount board processes on either the top or bottom side of the board
- Deemed to be a static safe product in accordance with EIA 625, EIA 541. Test methods employed were in accordance with EOS/ESD S11.11
- Ideal for auto apply applications



Specifications/Approvals

| | | | |
|------------------|----|-----|---------------------|
| Tyco Electronics | | T1K | TTDS-034 |
| | | T2K | TTDS-035 |
| | | TSK | TTDS-085 |
| Industry | UL | T1K | MH17292 Group PGJ12 |
| | | T2K | MH17292 Group PGJ12 |

Adhesive

Permanent acrylic

Service temperature

| | | |
|---------------------------------------|-----------------|-----------------|
| T1K ¹ , T2K ² , | -40°C to +260°C | -40°F to +500°F |
| TSK ² , KTT ² | | |

¹ Flash exposure to +472°C (+800°F)
² Flash exposure to +538°C (+1000°F)

Recommended printer

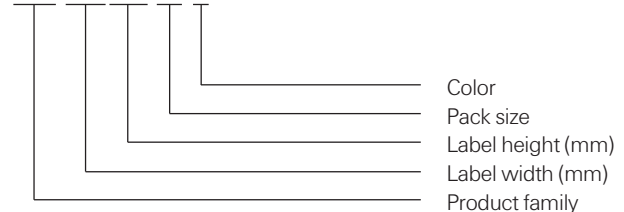
| | |
|--------------------|--------|
| T1K, T2K, TSK, T2Y | T312S* |
| KTT | |

Recommended ribbon

1330-0619-10*
 * Alternative printers and ribbons are available for special applications. Contact Tyco Electronics Identification for more information.

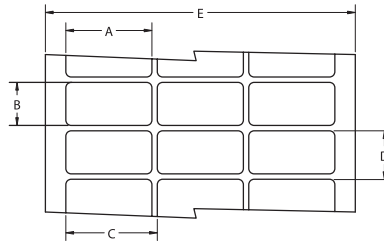
Part numbering system

T1K-044033-10-9



T1K White Kapton® labels

Ordering information



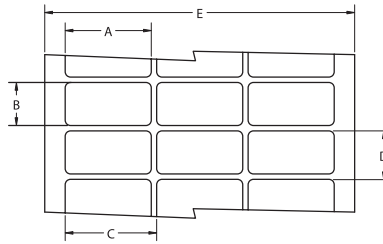
Product dimensions

| Product order code | Package quantity | Labels across | Label width (A) | | Label height (B) | | Horizontal repeat (C) | | Vertical repeat (D) | | Web width (E) | |
|--------------------|------------------|---------------|-----------------|---------------|------------------|---------------|-----------------------|---------------|---------------------|---------------|---------------|---------------|
| | | | mm | <i>inches</i> | mm | <i>inches</i> | mm | <i>inches</i> | mm | <i>inches</i> | mm | <i>inches</i> |
| T1K-044033-10-9 | 10,000 | 20 | 4.4 | <i>0.170</i> | 3.3 | <i>0.130</i> | 4.4 | <i>0.170</i> | 9.5 | <i>0.375</i> | 92.4 | <i>3.636</i> |
| T1K-064064-25-9 | 25,000 | 12 | 6.4 | <i>0.250</i> | 6.4 | <i>0.250</i> | 6.4 | <i>0.250</i> | 9.5 | <i>0.375</i> | 82.2 | <i>3.240</i> |
| *T1K-080080-10-9 | 10,000 | 8 | 8.0 | <i>0.315</i> | 8.0 | <i>0.315</i> | 9.9 | <i>0.390</i> | 13.3 | <i>0.525</i> | 83.3 | <i>3.280</i> |
| T1K-095080-25-9 | 25,000 | 5 | 9.5 | <i>0.375</i> | 8.0 | <i>0.315</i> | 12.2 | <i>0.480</i> | 12.7 | <i>0.500</i> | 64.3 | <i>2.531</i> |
| T1K-095095-10-9 | 10,000 | 7 | 9.5 | <i>0.375</i> | 9.5 | <i>0.375</i> | 11.1 | <i>0.437</i> | 12.7 | <i>0.500</i> | 82.1 | <i>3.230</i> |
| T1K-127032-10-9 | 10,000 | 5 | 12.7 | <i>0.500</i> | 3.2 | <i>0.125</i> | 19.1 | <i>0.750</i> | 3.2 | <i>0.250</i> | 94.9 | <i>3.736</i> |
| T1K-127111-10-9 | 10,000 | 5 | 12.7 | <i>0.500</i> | 11.1 | <i>0.437</i> | 16.8 | <i>0.662</i> | 14.3 | <i>0.563</i> | 86.0 | <i>3.380</i> |
| T1K-127127-10-9 | 10,000 | 5 | 12.7 | <i>0.500</i> | 12.7 | <i>0.500</i> | 15.9 | <i>0.625</i> | 15.9 | <i>0.625</i> | 82.6 | <i>3.250</i> |
| *T1K-165051-25-9 | 25,000 | 4 | 16.5 | <i>0.650</i> | 5.1 | <i>0.200</i> | 17.8 | <i>0.700</i> | 8.3 | <i>0.325</i> | 75.8 | <i>2.990</i> |
| T1K-171171-10-9 | 10,000 | 5 | 17.1 | <i>0.674</i> | 17.1 | <i>0.674</i> | 19.7 | <i>0.774</i> | 20.3 | <i>0.800</i> | 101.8 | <i>4.006</i> |
| *T1K-178095-10-9 | 10,000 | 4 | 17.8 | <i>0.700</i> | 9.5 | <i>0.375</i> | 19.1 | <i>0.750</i> | 12.7 | <i>0.500</i> | 80.9 | <i>3.190</i> |
| *T1K-191064-10-9 | 10,000 | 4 | 19.1 | <i>0.750</i> | 6.4 | <i>0.250</i> | 21.6 | <i>0.850</i> | 9.5 | <i>0.375</i> | 89.9 | <i>3.540</i> |
| T1K-229064-10-9 | 10,000 | 3 | 22.9 | <i>0.900</i> | 6.4 | <i>0.250</i> | 28.6 | <i>1.125</i> | 9.5 | <i>0.375</i> | 86.0 | <i>3.390</i> |
| T1K-254045-10-9 | 10,000 | 3 | 25.4 | <i>1.000</i> | 4.6 | <i>0.180</i> | 31.8 | <i>1.250</i> | 8.5 | <i>0.333</i> | 95.3 | <i>3.750</i> |
| T1K-254064-10-9 | 10,000 | 3 | 25.4 | <i>1.000</i> | 6.4 | <i>0.250</i> | 27.9 | <i>1.100</i> | 9.5 | <i>0.375</i> | 87.3 | <i>3.436</i> |
| T1K-254097-10-9 | 10,000 | 3 | 25.4 | <i>1.000</i> | 9.7 | <i>0.380</i> | 27.9 | <i>1.100</i> | 12.7 | <i>0.500</i> | 87.4 | <i>3.440</i> |
| T1K-254127-10-9 | 10,000 | 3 | 25.4 | <i>1.000</i> | 12.7 | <i>0.500</i> | 27.9 | <i>1.100</i> | 16.9 | <i>0.666</i> | 87.4 | <i>3.440</i> |
| T1K-254254-10-9 | 10,000 | 3 | 25.4 | <i>1.000</i> | 25.4 | <i>1.000</i> | 27.9 | <i>1.100</i> | 28.6 | <i>1.125</i> | 87.4 | <i>3.440</i> |
| *T1K-305047-10-9 | 10,000 | 2 | 30.5 | <i>1.200</i> | 4.7 | <i>0.185</i> | 33.0 | <i>1.300</i> | 7.8 | <i>0.306</i> | 69.5 | <i>2.736</i> |
| T1K-318064-10-9 | 10,000 | 1 | 31.8 | <i>1.250</i> | 6.4 | <i>0.250</i> | N/A | N/A | 9.5 | <i>0.375</i> | 37.9 | <i>1.490</i> |
| T1K-381020-10-9 | 10,000 | 1 | 38.1 | <i>1.500</i> | 2.0 | <i>0.080</i> | N/A | N/A | 10.7 | <i>0.423</i> | 44.1 | <i>1.740</i> |
| *T1K-381127-5-9 | 5,000 | 2 | 38.1 | <i>1.500</i> | 12.7 | <i>0.500</i> | 44.2 | <i>1.738</i> | 15.9 | <i>0.625</i> | 88.2 | <i>3.472</i> |
| T1K-381381-2-5-9 | 2,500 | 2 | 38.1 | <i>1.500</i> | 38.1 | <i>1.500</i> | 44.5 | <i>1.750</i> | 40.8 | <i>1.607</i> | 88.9 | <i>3.500</i> |
| T1K-445064-10-9 | 10,000 | 1 | 44.5 | <i>1.750</i> | 6.4 | <i>0.250</i> | N/A | N/A | 9.5 | <i>0.375</i> | 50.4 | <i>1.986</i> |
| T1K-445102-5-9 | 5,000 | 1 | 44.5 | <i>1.750</i> | 10.2 | <i>0.400</i> | N/A | N/A | 12.7 | <i>0.500</i> | 50.4 | <i>1.386</i> |
| T1K-508064-10-9 | 10,000 | 1 | 50.8 | <i>2.000</i> | 6.4 | <i>0.250</i> | N/A | N/A | 9.5 | <i>0.375</i> | 56.9 | <i>2.240</i> |
| T1K-508095-5-9 | 5,000 | 1 | 50.8 | <i>2.000</i> | 9.5 | <i>0.375</i> | N/A | N/A | 12.7 | <i>0.500</i> | 57.2 | <i>2.250</i> |
| T1K-508127-5-9 | 5,000 | 1 | 50.8 | <i>2.000</i> | 12.7 | <i>0.500</i> | N/A | N/A | 15.9 | <i>0.625</i> | 56.9 | <i>2.240</i> |

* NOTE: Kapton®/polyimide labels not compatible with T200 Printers

T2K White Kapton® labels

Ordering information



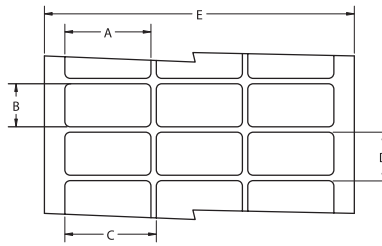
Product dimensions

| Product order code | Package quantity | Labels across | Label width (A) | | Label height (B) | | Horizontal repeat (C) | | Vertical repeat (D) | | Web width (E) | |
|--------------------|------------------|---------------|-----------------|---------------|------------------|---------------|-----------------------|---------------|---------------------|---------------|---------------|---------------|
| | | | mm | <i>inches</i> | mm | <i>inches</i> | mm | <i>inches</i> | mm | <i>inches</i> | mm | <i>inches</i> |
| T2K-044033-10-9 | 10,000 | 20 | 4.4 | <i>0.170</i> | 3.3 | <i>0.130</i> | 4.4 | <i>0.170</i> | 9.5 | <i>0.375</i> | 92.4 | <i>3.636</i> |
| T2K-064064-25-9 | 25,000 | 12 | 6.4 | <i>0.250</i> | 6.4 | <i>0.250</i> | 6.4 | <i>0.250</i> | 9.5 | <i>0.375</i> | 82.2 | <i>3.240</i> |
| *T2K-080080-10-9 | 10,000 | 8 | 8.0 | <i>0.315</i> | 8.0 | <i>0.315</i> | 9.9 | <i>0.390</i> | 13.3 | <i>0.525</i> | 83.3 | <i>3.280</i> |
| T2K-095080-25-9 | 25,000 | 5 | 9.5 | <i>0.375</i> | 8.0 | <i>0.315</i> | 12.2 | <i>0.480</i> | 12.7 | <i>0.500</i> | 64.3 | <i>2.531</i> |
| T2K-095095-10-9 | 10,000 | 7 | 9.5 | <i>0.375</i> | 9.5 | <i>0.375</i> | 11.1 | <i>0.437</i> | 12.7 | <i>0.500</i> | 82.1 | <i>3.230</i> |
| T2K-127032-10-9 | 10,000 | 5 | 12.7 | <i>0.500</i> | 3.2 | <i>0.125</i> | 19.1 | <i>0.750</i> | 3.2 | <i>0.250</i> | 94.9 | <i>3.736</i> |
| T2K-127111-10-9 | 10,000 | 5 | 12.7 | <i>0.500</i> | 11.1 | <i>0.437</i> | 16.8 | <i>0.662</i> | 14.3 | <i>0.563</i> | 86.0 | <i>3.380</i> |
| T2K-127127-10-9 | 10,000 | 5 | 12.7 | <i>0.500</i> | 12.7 | <i>0.500</i> | 15.9 | <i>0.625</i> | 15.9 | <i>0.625</i> | 82.6 | <i>3.250</i> |
| *T2K-165051-25-9 | 25,000 | 4 | 16.5 | <i>0.650</i> | 5.1 | <i>0.200</i> | 17.8 | <i>0.700</i> | 8.3 | <i>0.325</i> | 75.8 | <i>2.990</i> |
| T2K-171171-10-9 | 10,000 | 5 | 17.1 | <i>0.674</i> | 17.1 | <i>0.674</i> | 19.7 | <i>0.774</i> | 20.3 | <i>0.800</i> | 101.8 | <i>4.006</i> |
| *T2K-178095-10-9 | 10,000 | 4 | 17.8 | <i>0.700</i> | 9.5 | <i>0.375</i> | 19.1 | <i>0.750</i> | 12.7 | <i>0.500</i> | 80.9 | <i>3.190</i> |
| *T2K-191064-10-9 | 10,000 | 4 | 19.1 | <i>0.750</i> | 6.4 | <i>0.250</i> | 21.6 | <i>0.850</i> | 9.5 | <i>0.375</i> | 89.9 | <i>3.540</i> |
| T2K-229064-10-9 | 10,000 | 3 | 22.9 | <i>0.900</i> | 6.4 | <i>0.250</i> | 28.6 | <i>1.125</i> | 9.5 | <i>0.375</i> | 86.0 | <i>3.390</i> |
| T2K-254045-10-9 | 10,000 | 3 | 25.4 | <i>1.000</i> | 4.6 | <i>0.180</i> | 31.8 | <i>1.250</i> | 8.5 | <i>0.333</i> | 95.3 | <i>3.750</i> |
| T2K-254064-10-9 | 10,000 | 3 | 25.4 | <i>1.000</i> | 6.4 | <i>0.250</i> | 27.9 | <i>1.100</i> | 9.5 | <i>0.375</i> | 87.3 | <i>3.436</i> |
| T2K-254097-10-9 | 10,000 | 3 | 25.4 | <i>1.000</i> | 9.7 | <i>0.380</i> | 27.9 | <i>1.100</i> | 12.7 | <i>0.500</i> | 87.4 | <i>3.440</i> |
| T2K-254127-10-9 | 10,000 | 3 | 25.4 | <i>1.000</i> | 12.7 | <i>0.500</i> | 27.9 | <i>1.100</i> | 16.9 | <i>0.666</i> | 87.4 | <i>3.440</i> |
| T2K-254254-10-9 | 10,000 | 3 | 25.4 | <i>1.000</i> | 25.4 | <i>1.000</i> | 27.9 | <i>1.100</i> | 28.6 | <i>1.125</i> | 87.4 | <i>3.440</i> |
| *T2K-305047-10-9 | 10,000 | 2 | 30.5 | <i>1.200</i> | 4.7 | <i>0.185</i> | 33.0 | <i>1.300</i> | 7.8 | <i>0.306</i> | 69.5 | <i>2.736</i> |
| T2K-318064-10-9 | 10,000 | 1 | 31.8 | <i>1.250</i> | 6.4 | <i>0.250</i> | N/A | N/A | 9.5 | <i>0.375</i> | 37.9 | <i>1.490</i> |
| T2K-381020-10-9 | 10,000 | 1 | 38.1 | <i>1.500</i> | 2.0 | <i>0.080</i> | N/A | N/A | 10.7 | <i>0.423</i> | 44.1 | <i>1.740</i> |
| T2K-381064-10-9 | 10,000 | 1 | 38.1 | <i>1.500</i> | 6.4 | <i>0.250</i> | N/A | N/A | 9.5 | <i>0.375</i> | 44.5 | <i>1.750</i> |
| *T2K-381127-5-9 | 5,000 | 2 | 38.1 | <i>1.500</i> | 12.7 | <i>0.500</i> | 44.2 | <i>1.738</i> | 15.9 | <i>0.625</i> | 88.2 | <i>3.472</i> |
| T2K-381381-2-5-9 | 2,500 | 2 | 38.1 | <i>1.500</i> | 38.1 | <i>1.500</i> | 44.5 | <i>1.750</i> | 40.8 | <i>1.607</i> | 88.9 | <i>3.500</i> |
| T2K-445064-10-9 | 10,000 | 1 | 44.5 | <i>1.750</i> | 6.4 | <i>0.250</i> | N/A | N/A | 9.5 | <i>0.375</i> | 50.4 | <i>1.986</i> |
| T2K-445102-5-9 | 5,000 | 1 | 44.5 | <i>1.750</i> | 10.2 | <i>0.400</i> | N/A | N/A | 12.7 | <i>0.500</i> | 50.4 | <i>1.386</i> |
| T2K-508064-10-9 | 10,000 | 1 | 50.8 | <i>2.000</i> | 6.4 | <i>0.250</i> | N/A | N/A | 9.5 | <i>0.375</i> | 56.9 | <i>2.240</i> |
| T2K-508091-5-9 | 5,000 | 1 | 50.8 | <i>2.000</i> | 9.1 | <i>0.358</i> | N/A | N/A | 12.2 | <i>0.480</i> | 57.2 | <i>2.250</i> |
| T2K-508095-5-9 | 5,000 | 1 | 50.8 | <i>2.000</i> | 9.5 | <i>0.375</i> | N/A | N/A | 12.7 | <i>0.500</i> | 57.2 | <i>2.250</i> |
| T2K-508127-5-9 | 5,000 | 1 | 50.8 | <i>2.000</i> | 12.7 | <i>0.500</i> | N/A | N/A | 15.9 | <i>0.625</i> | 56.9 | <i>2.240</i> |

* NOTE: Kapton®/polyimide labels not compatible with T200 Printers

TSK White polyimide labels

Ordering information



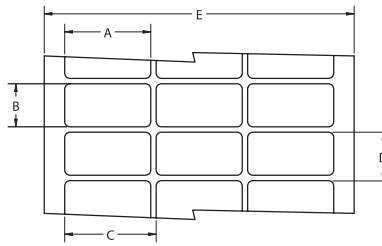
Product dimensions

| Product order code | Package quantity | Labels across | Label width (A) | | Label height (B) | | Horizontal repeat (C) | | Vertical repeat (D) | | Web width (E) | |
|--------------------|------------------|---------------|-----------------|---------------|------------------|---------------|-----------------------|---------------|---------------------|---------------|---------------|---------------|
| | | | mm | <i>inches</i> | mm | <i>inches</i> | mm | <i>inches</i> | mm | <i>inches</i> | mm | <i>inches</i> |
| TSK-044033-10-9 | 10,000 | 20 | 4.4 | <i>0.170</i> | 3.3 | <i>0.130</i> | 4.4 | <i>0.170</i> | 9.5 | <i>0.375</i> | 92.4 | <i>3.636</i> |
| TSK-064064-25-9 | 25,000 | 12 | 6.4 | <i>0.250</i> | 6.4 | <i>0.250</i> | 6.4 | <i>0.250</i> | 9.5 | <i>0.375</i> | 82.2 | <i>3.240</i> |
| *TSK-080080-10-9 | 10,000 | 8 | 8.0 | <i>0.315</i> | 8.0 | <i>0.315</i> | 9.9 | <i>0.390</i> | 13.3 | <i>0.525</i> | 83.3 | <i>3.280</i> |
| TSK-095080-25-9 | 25,000 | 5 | 9.5 | <i>0.375</i> | 8.0 | <i>0.315</i> | 12.2 | <i>0.480</i> | 12.7 | <i>0.500</i> | 64.3 | <i>2.531</i> |
| TSK-095095-10-9 | 10,000 | 7 | 9.5 | <i>0.375</i> | 9.5 | <i>0.375</i> | 11.1 | <i>0.437</i> | 12.7 | <i>0.500</i> | 82.1 | <i>3.230</i> |
| TSK-127032-10-9 | 10,000 | 5 | 12.7 | <i>0.500</i> | 3.2 | <i>0.125</i> | 19.1 | <i>0.750</i> | 3.2 | <i>0.250</i> | 94.9 | <i>3.736</i> |
| TSK-127111-10-9 | 10,000 | 5 | 12.7 | <i>0.500</i> | 11.1 | <i>0.437</i> | 16.8 | <i>0.662</i> | 14.3 | <i>0.563</i> | 86.0 | <i>3.380</i> |
| TSK-127127-10-9 | 10,000 | 5 | 12.7 | <i>0.500</i> | 12.7 | <i>0.500</i> | 15.9 | <i>0.625</i> | 15.9 | <i>0.625</i> | 82.6 | <i>3.250</i> |
| TSK-165051-25-9 | 25,000 | 4 | 16.5 | <i>0.650</i> | 5.1 | <i>0.200</i> | 17.8 | <i>0.700</i> | 8.3 | <i>0.325</i> | 75.8 | <i>2.990</i> |
| TSK-171171-10-9 | 10,000 | 5 | 17.1 | <i>0.674</i> | 17.1 | <i>0.674</i> | 19.7 | <i>0.774</i> | 20.3 | <i>0.800</i> | 101.8 | <i>4.006</i> |
| TSK-178095-10-9 | 10,000 | 4 | 17.8 | <i>0.700</i> | 9.5 | <i>0.375</i> | 19.1 | <i>0.750</i> | 12.7 | <i>0.500</i> | 80.9 | <i>3.190</i> |
| *TSK-191064-10-9 | 10,000 | 4 | 19.1 | <i>0.750</i> | 6.4 | <i>0.250</i> | 21.6 | <i>0.850</i> | 9.5 | <i>0.375</i> | 89.9 | <i>3.540</i> |
| TSK-229064-10-9 | 10,000 | 3 | 22.9 | <i>0.900</i> | 6.4 | <i>0.250</i> | 28.6 | <i>1.125</i> | 9.5 | <i>0.375</i> | 86.0 | <i>3.390</i> |
| TSK-254045-10-9 | 10,000 | 3 | 25.4 | <i>1.000</i> | 4.6 | <i>0.180</i> | 31.8 | <i>1.250</i> | 8.5 | <i>0.333</i> | 95.3 | <i>3.750</i> |
| TSK-254064-10-9 | 10,000 | 3 | 25.4 | <i>1.000</i> | 6.4 | <i>0.250</i> | 27.9 | <i>1.100</i> | 9.5 | <i>0.375</i> | 87.3 | <i>3.436</i> |
| TSK-254097-10-9 | 10,000 | 3 | 25.4 | <i>1.000</i> | 9.7 | <i>0.380</i> | 27.9 | <i>1.100</i> | 12.7 | <i>0.500</i> | 87.4 | <i>3.440</i> |
| TSK-254127-10-9 | 10,000 | 3 | 25.4 | <i>1.000</i> | 12.7 | <i>0.500</i> | 27.9 | <i>1.100</i> | 16.9 | <i>0.666</i> | 87.4 | <i>3.440</i> |
| TSK-254254-10-9 | 10,000 | 3 | 25.4 | <i>1.000</i> | 25.4 | <i>1.000</i> | 27.9 | <i>1.100</i> | 28.6 | <i>1.125</i> | 87.4 | <i>3.440</i> |
| *TSK-305047-10-9 | 10,000 | 2 | 30.5 | <i>1.200</i> | 4.7 | <i>0.185</i> | 33.0 | <i>1.300</i> | 7.8 | <i>0.306</i> | 69.5 | <i>2.736</i> |
| TSK-318064-10-9 | 10,000 | 1 | 31.8 | <i>1.250</i> | 6.4 | <i>0.250</i> | N/A | N/A | 9.5 | <i>0.375</i> | 37.9 | <i>1.490</i> |
| TSK-381020-10-9 | 10,000 | 1 | 38.1 | <i>1.500</i> | 2.0 | <i>0.080</i> | N/A | N/A | 10.7 | <i>0.423</i> | 44.1 | <i>1.740</i> |
| TSK-381064-10-9 | 10,000 | 1 | 38.1 | <i>1.500</i> | 6.4 | <i>0.250</i> | N/A | N/A | 9.5 | <i>0.375</i> | 44.5 | <i>1.750</i> |
| *TSK-381127-5-9 | 5,000 | 2 | 38.1 | <i>1.500</i> | 12.7 | <i>0.500</i> | 44.2 | <i>1.738</i> | 15.9 | <i>0.625</i> | 88.2 | <i>3.472</i> |
| TSK-381381-2-5-9 | 2,500 | 2 | 38.1 | <i>1.500</i> | 38.1 | <i>1.500</i> | 44.5 | <i>1.750</i> | 40.8 | <i>1.607</i> | 88.9 | <i>3.500</i> |
| TSK-445064-10-9 | 10,000 | 1 | 44.5 | <i>1.750</i> | 6.4 | <i>0.250</i> | N/A | N/A | 9.5 | <i>0.375</i> | 50.4 | <i>1.986</i> |
| TSK-445102-5-9 | 5,000 | 1 | 44.5 | <i>1.750</i> | 10.2 | <i>0.400</i> | N/A | N/A | 12.7 | <i>0.500</i> | 50.4 | <i>1.386</i> |
| TSK-508064-10-9 | 10,000 | 1 | 50.8 | <i>2.000</i> | 9.5 | <i>0.375</i> | N/A | N/A | 12.7 | <i>0.500</i> | 57.2 | <i>2.250</i> |
| TSK-508095-10-9 | 5,000 | 1 | 50.8 | <i>2.000</i> | 12.7 | <i>0.500</i> | N/A | N/A | 15.9 | <i>0.625</i> | 56.9 | <i>2.240</i> |
| TSK-508127-5-9 | 5,000 | 1 | 50.8 | <i>2.000</i> | 12.7 | <i>0.500</i> | N/A | N/A | 15.9 | <i>0.625</i> | 56.9 | <i>2.240</i> |

* NOTE: Kapton®/polyimide labels not compatible with T200 Printers

KTT Tan Kapton® labels

Ordering information



Product dimensions

| Product order code | Package quantity | Labels across | Label width (A) | | Label height (B) | | Horizontal repeat (C) | | Vertical repeat (D) | | Web width (E) | |
|--------------------|------------------|---------------|-----------------|---------------|------------------|---------------|-----------------------|---------------|---------------------|---------------|---------------|---------------|
| | | | mm | <i>inches</i> | mm | <i>inches</i> | mm | <i>inches</i> | mm | <i>inches</i> | mm | <i>inches</i> |
| KTT-044033-10-1A | 10,000 | 20 | 4.4 | <i>0.170</i> | 3.3 | <i>0.130</i> | 4.4 | <i>0.170</i> | 9.5 | <i>0.375</i> | 92.4 | <i>3.636</i> |
| KTT-064064-25-1A | 25,000 | 12 | 6.4 | <i>0.250</i> | 6.4 | <i>0.250</i> | 6.4 | <i>0.250</i> | 9.5 | <i>0.375</i> | 82.2 | <i>3.240</i> |
| *KTT-080080-10-1A | 10,000 | 8 | 8.0 | <i>0.315</i> | 8.0 | <i>0.315</i> | 9.9 | <i>0.390</i> | 13.3 | <i>0.525</i> | 83.3 | <i>3.280</i> |
| KTT-095080-25-1A | 25,000 | 5 | 9.5 | <i>0.375</i> | 8.0 | <i>0.315</i> | 12.2 | <i>0.480</i> | 12.7 | <i>0.500</i> | 64.3 | <i>2.531</i> |
| KTT-095095-10-1A | 10,000 | 7 | 9.5 | <i>0.375</i> | 9.5 | <i>0.375</i> | 11.1 | <i>0.437</i> | 12.7 | <i>0.500</i> | 82.1 | <i>3.230</i> |
| KTT-127032-10-1A | 10,000 | 5 | 12.7 | <i>0.500</i> | 3.2 | <i>0.125</i> | 19.1 | <i>0.750</i> | 3.2 | <i>0.250</i> | 94.9 | <i>3.736</i> |
| KTT-127111-10-1A | 10,000 | 5 | 12.7 | <i>0.500</i> | 11.1 | <i>0.437</i> | 16.8 | <i>0.662</i> | 14.3 | <i>0.563</i> | 86.0 | <i>3.380</i> |
| KTT-127127-10-1A | 10,000 | 5 | 12.7 | <i>0.500</i> | 12.7 | <i>0.500</i> | 15.9 | <i>0.625</i> | 15.9 | <i>0.625</i> | 82.6 | <i>3.250</i> |
| *KTT-165051-25-1A | 25,000 | 4 | 16.5 | <i>0.650</i> | 5.1 | <i>0.200</i> | 17.8 | <i>0.700</i> | 8.3 | <i>0.325</i> | 75.8 | <i>2.990</i> |
| KTT-171171-10-1A | 10,000 | 5 | 17.1 | <i>0.674</i> | 17.1 | <i>0.674</i> | 19.7 | <i>0.774</i> | 20.3 | <i>0.800</i> | 101.8 | <i>4.006</i> |
| *KTT-178095-10-1A | 10,000 | 4 | 17.8 | <i>0.700</i> | 9.5 | <i>0.375</i> | 19.1 | <i>0.750</i> | 12.7 | <i>0.500</i> | 80.9 | <i>3.190</i> |
| *KTT-191064-10-1A | 10,000 | 4 | 19.1 | <i>0.750</i> | 6.4 | <i>0.250</i> | 21.6 | <i>0.850</i> | 9.5 | <i>0.375</i> | 89.9 | <i>3.540</i> |
| KTT-229064-10-1A | 10,000 | 3 | 22.9 | <i>0.900</i> | 6.4 | <i>0.250</i> | 28.6 | <i>1.125</i> | 9.5 | <i>0.375</i> | 86.0 | <i>3.390</i> |
| KTT-254045-10-1A | 10,000 | 3 | 25.4 | <i>1.000</i> | 4.6 | <i>0.180</i> | 31.8 | <i>1.250</i> | 8.5 | <i>0.333</i> | 95.3 | <i>3.750</i> |
| KTT-254064-10-1A | 10,000 | 3 | 25.4 | <i>1.000</i> | 6.4 | <i>0.250</i> | 27.9 | <i>1.100</i> | 9.5 | <i>0.375</i> | 87.3 | <i>3.436</i> |
| KTT-254097-10-1A | 10,000 | 3 | 25.4 | <i>1.000</i> | 9.7 | <i>0.380</i> | 27.9 | <i>1.100</i> | 12.7 | <i>0.500</i> | 87.4 | <i>3.440</i> |
| KTT-254127-10-1A | 10,000 | 3 | 25.4 | <i>1.000</i> | 12.7 | <i>0.500</i> | 27.9 | <i>1.100</i> | 16.9 | <i>0.666</i> | 87.4 | <i>3.440</i> |
| KTT-254254-10-1A | 10,000 | 3 | 25.4 | <i>1.000</i> | 25.4 | <i>1.000</i> | 27.9 | <i>1.100</i> | 28.6 | <i>1.125</i> | 87.4 | <i>3.440</i> |
| *KTT-305047-10-1A | 10,000 | 2 | 30.5 | <i>1.200</i> | 4.7 | <i>0.185</i> | 33.0 | <i>1.300</i> | 7.8 | <i>0.306</i> | 69.5 | <i>2.736</i> |
| KTT-318064-10-1A | 10,000 | 1 | 31.8 | <i>1.250</i> | 6.4 | <i>0.250</i> | N/A | N/A | 9.5 | <i>0.375</i> | 37.9 | <i>1.490</i> |
| KTT-381020-10-1A | 10,000 | 1 | 38.1 | <i>1.500</i> | 2.0 | <i>0.080</i> | N/A | N/A | 10.7 | <i>0.423</i> | 44.1 | <i>1.740</i> |
| KTT-381064-10-1A | 10,000 | 1 | 38.1 | <i>1.500</i> | 6.4 | <i>0.250</i> | N/A | N/A | 9.5 | <i>0.375</i> | 44.5 | <i>1.750</i> |
| *KTT-381127-5-1A | 5,000 | 2 | 38.1 | <i>1.500</i> | 12.7 | <i>0.500</i> | 44.2 | <i>1.738</i> | 15.9 | <i>0.625</i> | 88.2 | <i>3.472</i> |
| KTT-381381-2.5-1A | 2,500 | 2 | 38.1 | <i>1.500</i> | 38.1 | <i>1.500</i> | 44.5 | <i>1.750</i> | 40.8 | <i>1.607</i> | 88.9 | <i>3.500</i> |
| KTT-445064-10-1A | 10,000 | 1 | 44.5 | <i>1.750</i> | 6.4 | <i>0.250</i> | N/A | N/A | 9.5 | <i>0.375</i> | 50.4 | <i>1.986</i> |
| KTT-445102-5-1A | 5,000 | 1 | 44.5 | <i>1.750</i> | 10.2 | <i>0.400</i> | N/A | N/A | 12.7 | <i>0.500</i> | 50.4 | <i>1.986</i> |
| KTT-508064-10-1A | 10,000 | 1 | 50.8 | <i>2.000</i> | 6.4 | <i>0.250</i> | N/A | N/A | 9.5 | <i>0.375</i> | 56.9 | <i>2.240</i> |
| KTT-508095-5-1A | 5,000 | 1 | 50.8 | <i>2.000</i> | 9.5 | <i>0.375</i> | N/A | N/A | 12.7 | <i>0.500</i> | 57.2 | <i>2.250</i> |
| KTT-508127-5-1A | 5,000 | 1 | 50.8 | <i>2.000</i> | 12.7 | <i>0.500</i> | N/A | N/A | 15.9 | <i>0.625</i> | 56.9 | <i>2.240</i> |

*NOTE: Kapton®/polyimide labels not compatible with T200 Printers

Данный компонент на территории Российской Федерации

Вы можете приобрести в компании MosChip.

Для оперативного оформления запроса Вам необходимо перейти по данной ссылке:

<http://moschip.ru/get-element>

Вы можете разместить у нас заказ для любого Вашего проекта, будь то серийное производство или разработка единичного прибора.

В нашем ассортименте представлены ведущие мировые производители активных и пассивных электронных компонентов.

Нашей специализацией является поставка электронной компонентной базы двойного назначения, продукции таких производителей как XILINX, Intel (ex.ALTERA), Vicor, Microchip, Texas Instruments, Analog Devices, Mini-Circuits, Amphenol, Glenair.

Сотрудничество с глобальными дистрибьюторами электронных компонентов, предоставляет возможность заказывать и получать с международных складов практически любой перечень компонентов в оптимальные для Вас сроки.

На всех этапах разработки и производства наши партнеры могут получить квалифицированную поддержку опытных инженеров.

Система менеджмента качества компании отвечает требованиям в соответствии с ГОСТ Р ИСО 9001, ГОСТ РВ 0015-002 и ЭС РД 009

Офис по работе с юридическими лицами:

105318, г.Москва, ул.Щербаковская д.3, офис 1107, 1118, ДЦ «Щербаковский»

Телефон: +7 495 668-12-70 (многоканальный)

Факс: +7 495 668-12-70 (доб.304)

E-mail: info@moschip.ru

Skype отдела продаж:

moschip.ru

moschip.ru_4

moschip.ru_6

moschip.ru_9