

## LTC3616

# 6A, 4MHz, MONOLITHIC SYNCHRONOUS DC/DC STEP-DOWN CONVERTER

## DESCRIPTION

Demo Circuit 1461 is a high efficiency, high frequency step-down converter, incorporating the LTC3616 monolithic synchronous regulator. The DC1461A has an input voltage range of 2.25V to 5.5V, and is capable of delivering up to 6A of output current. The output voltage of the DC1461A can be set as low as 0.6V, the reference voltage of the LTC3616. The operating frequency range of the DC1461A is either set to a fixed 2.25 MHz by connecting the frequency pin to S<sub>VIN</sub>, set by an external resistor, or synchronized to an external clock, with a range up to 4 MHz. At low load currents, the DC1461A can operate in either noise sensitive applications, due to the capability of the LTC3616 to operate in pulse-skipping mode, or in high efficiency applications, because the LTC3616 also has Burst-Mode capability. The Burst Mode clamp can be set externally. Of course, in (forced) continuous mode, or large load current applications, the

DC1461A is a very efficient circuit - over 90%. The DC1461A consumes less than 300 uA of quiescent current during sleep operation, and during shut-down, it consumes less than 1 uA. The DC1461A can track another voltage, due to the LTC3616 track function, for easy power supply sequencing. Extra features include frequency and current fold-back, and an adjustable 0.3V-to-0.6V external reference. Because of the high switching frequency of the LTC3616, which is programmable up to 4 MHz, the DC1461A uses low profile surface mount components. All these features make the DC1461A perfectly suited for portable computer and distributed power applications.

Design files for this circuit board are available. Call the LTC factory.

### As Shipped Performance Summary

PARAMETER	CONDITIONS	VALUE
Minimum Input Voltage		2.25V
Maximum Input Voltage		5.5V
Run/Shutdown		GND = Shutdown
		V <sub>IN</sub> = Run
Output Voltage Regulation	V <sub>IN</sub> = 2.25V to 5.5V, I <sub>OUT</sub> = 0A to 6A	1.2V ±4% (1.152V – 1.248V)
	V <sub>IN</sub> = 2.5V to 5.5V, I <sub>OUT</sub> = 0A to 6A	1.8V ±4% (1.728V – 1.872V)
	V <sub>IN</sub> = 3.3V to 5.5V, I <sub>OUT</sub> = 0A to 6A	2.5V ±4% (2.4V – 2.6V)
	V <sub>IN</sub> = 4.2V to 5.5V, I <sub>OUT</sub> = 0A to 6A	3.3V ±4% (3.168V – 3.432V)
Typical Output Ripple Voltage	V <sub>IN</sub> = 5V, V <sub>OUT</sub> = 1.8V, I <sub>OUT</sub> = 6A (20 MHz BW)	<40mV <sub>p-p</sub>
Burst Mode	V <sub>IN</sub> = 5V, V <sub>OUT</sub> = 1.8V	<1.3A
Pulse-Skip Mode	V <sub>IN</sub> = 5V, V <sub>OUT</sub> = 1.8V	<1.2A
Nominal Switching Frequency	R <sub>T</sub> = 165k	2 MHz ± 20%

Table 1. Jumper Description

JUMPER	FUNCTION	RANGE/SETTING (DEFAULT)
JP1	Output Voltage Setting.	1.2V
J1	Mode: Forced Continuous Mode (FC), Burst Mode (BM or BMEC), or Pulse-Skip Mode(SYNC)	(FC) – BMEC – BM - PSM
J2	Run	(ON) - OFF
J3	Tracking (TRACK), Internal Soft-Start (INT SS), or External Soft-Start (EXT SS)	(EXT SS) – INT SS - TRACK
J4	DDR Memory Termination	(OFF) - ON
J5	External or Internal ITH Compensation	(EXT) – INT
J6	Frequency Setting: Timing Resistor (RT), Internally Synchronized (2.25 MHz), or Externally Synchronized	(Rt) – INT SYNC – EXT SYNC
J7	External Burst Mode Clamp Voltage	(SET) – EXT

## QUICK START PROCEDURE

Demonstration Circuit 1461 is easy to set up to evaluate the performance of the LTC3616. For proper measurement equipment configuration, set up the circuit according to the diagram in **Figure 1**. Before proceeding to test, insert shunts into the 1.2V position of the output voltage header JP1, into the FCM (Forced Continuous Mode) position of MODE header J1, into the OFF position of RUN header J2, into the EXT SS (external soft-start) position of Track/SS header J3, into the OFF position of DDR header J4, into the EXT (external) position of COMP header J5, into the Rt position of Rt/SYNC header J6, and into the SET position of VBMCV header J7.

When measuring the input or output voltage ripple, care must be taken to avoid a long ground lead on the oscilloscope probe. Measure the input or output voltage ripple by touching the probe tip directly across the Vin or Vout and GND terminals. See **Figure 2** for proper scope probe measurement technique.

With the DC1461 set up according to the proper measurement configuration and equipment in **Figure 1**, apply 6.3V at Vin (Do not hot-plug Vin or increase Vin over the rated maximum supply voltage of 5.5V, or the part may be damaged.). Measure Vout; it should read 0V. Turn on the circuit by inserting the shunt in header J2 into the ON position. The output voltage should be regulating. Measure Vout - it should measure 1.2V +/- 2% (1.176V to 1.224V).

Vary the input voltage from 2.25V to 5.5V and adjust the load current from 0 to 6A. Vout should regulate around 1.2V. Measure the output ripple voltage; it should measure less than 40 mVAC.

Observe the voltage waveform at the switch pins (the other side of the inductor from the output). Verify the switching frequency is between 1.6 MHz and 2.4 MHz (T = 625 ns and 416 ns), and that the switch node waveform is rectangular in shape.

Change the J1 shunt from forced continuous mode to Burst Mode or pulse-skip mode. Set the input voltage to 5V and the output current to any current less than 1A. Observe the discontinuous mode of operation at the switch node, and measure the output ripple voltage. It should measure less than 100 mV.

Insert the J2 shunt into the OFF position and move the shunt in the 1.2V output JP1 header into any of the two remaining output voltage option headers: 1.8V (JP2), 2.5V (JP3), or 3.3V (JP4). Just as in the 1.2V Vout test, the output voltage should read Vout +/- 2% tolerance under static line and load conditions and +/- 1% tolerance under dynamic line and load conditions (+/- 2% total). Also, the circuit operation in discontinuous mode will be the same. When finished, turn off the circuit by inserting the shunt in header J2 into the OFF position.

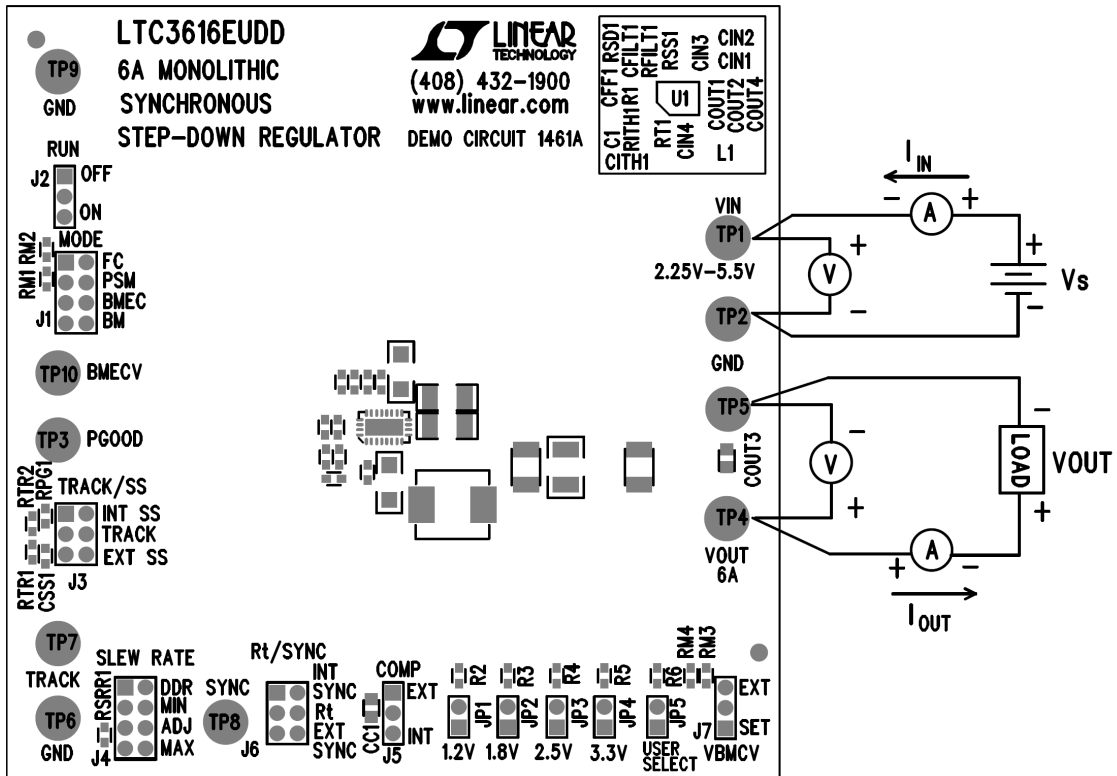


Figure 1. Proper Measurement Equipment Set-Up

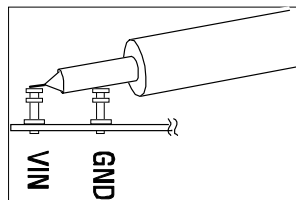


Figure 2. Measuring Input or Output Ripple

## Normal Switching Frequency & Output Ripple Voltage Waveforms

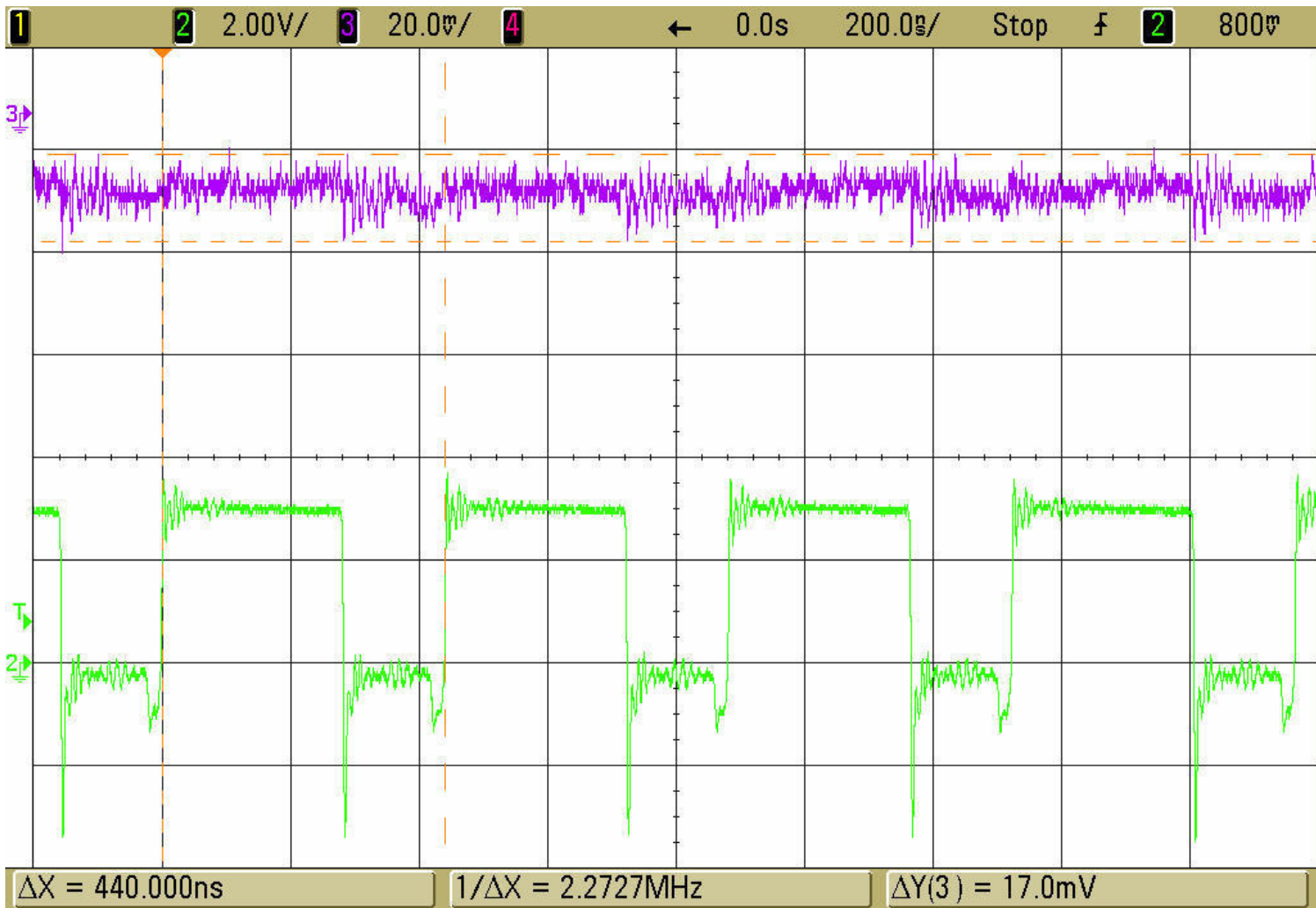


Figure 3. Switch Node & Output Ripple Voltage Waveforms

$V_{IN} = 3.3V$ ,  $V_{OUT} = 1.8V$ ,  $I_{OUT} = 6A$

$F_{SW} = 2.25 \text{ MHz}$  (Internally Synchronized:  $V_{RT} = V_{IN}$ )

Trace 3: Output Ripple Voltage (20 mV/div AC)

Trace 2: Switch Voltage (2 V/div)

**Load Step Response Waveform**

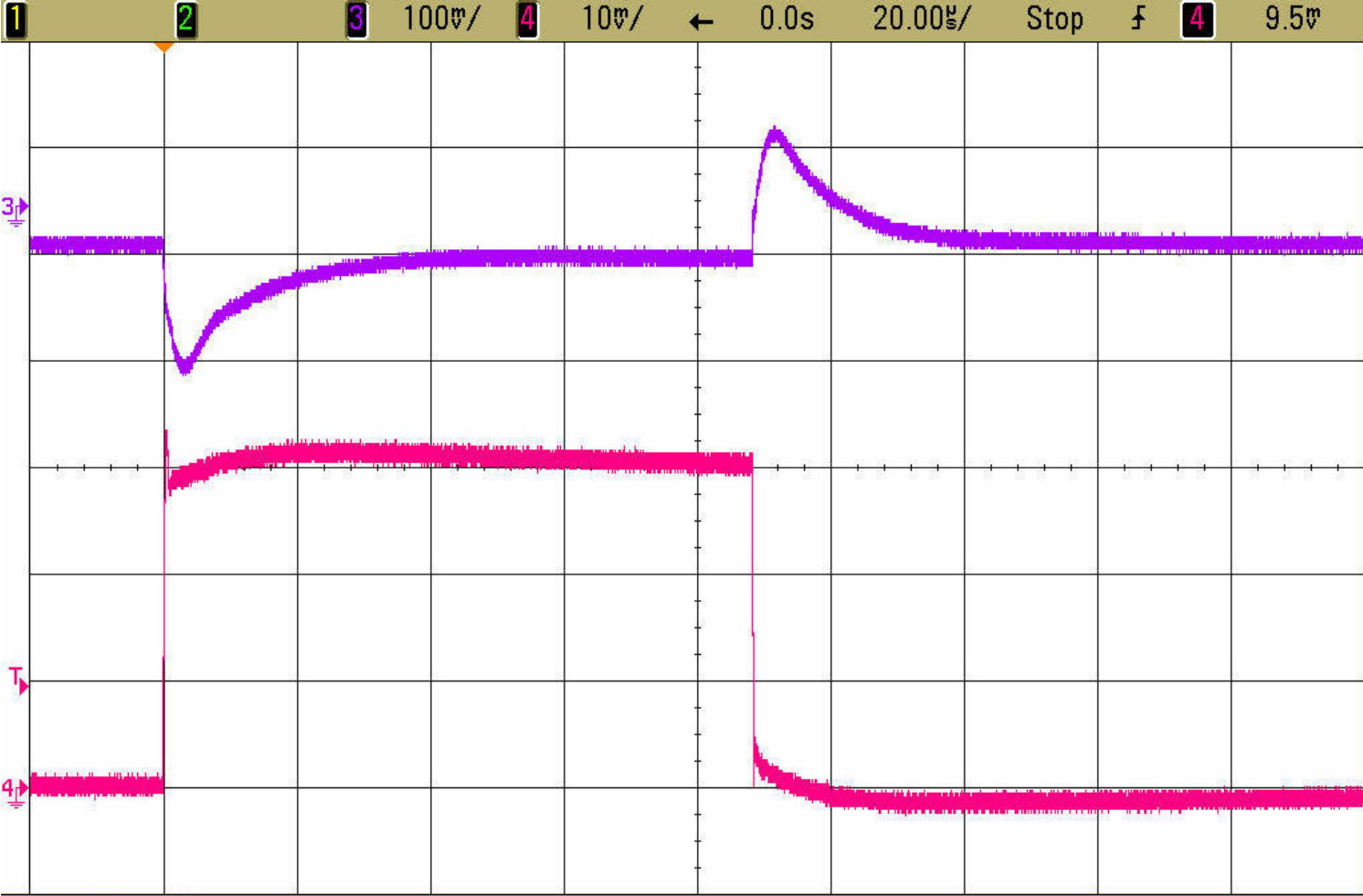
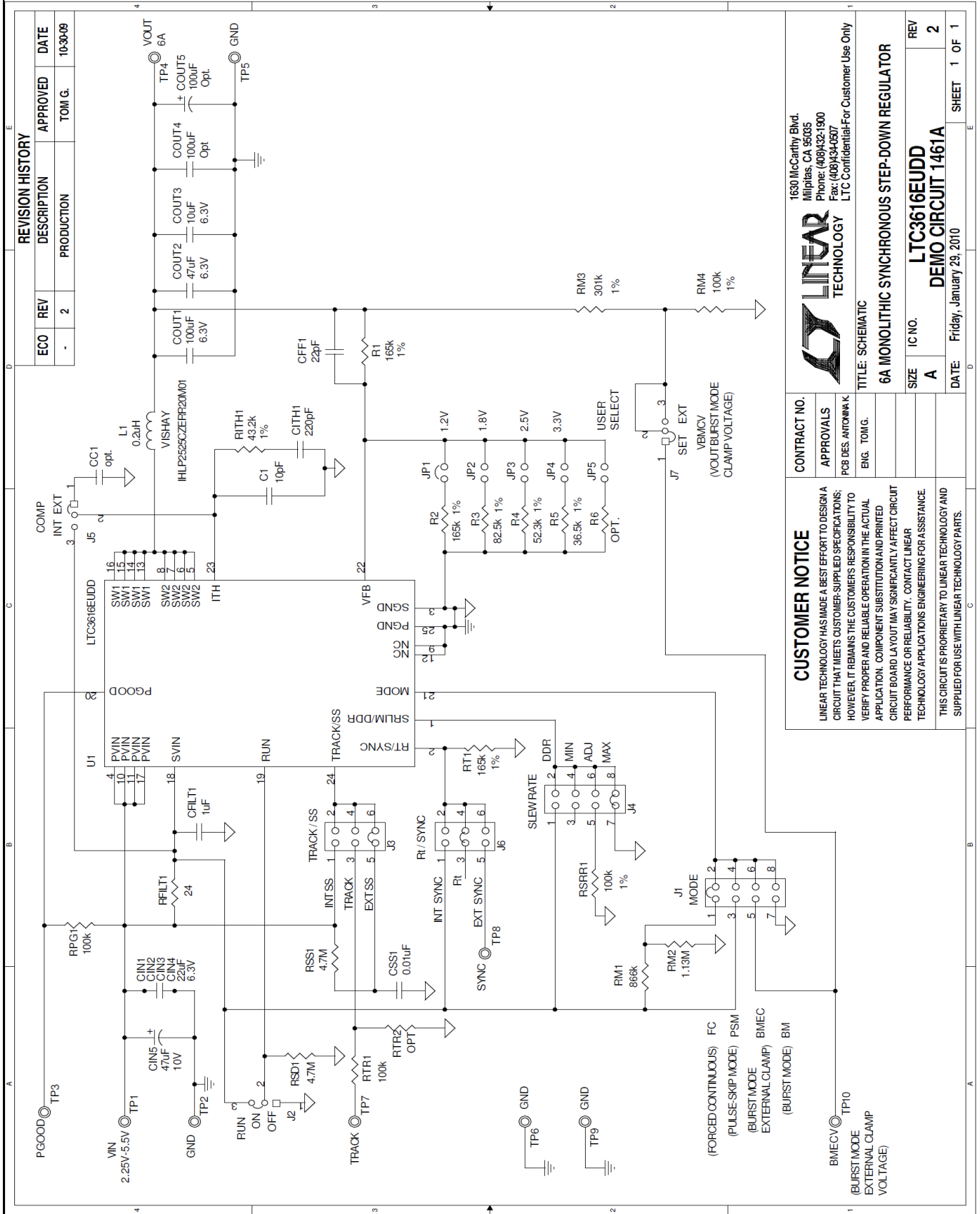


Figure 4. Load Step Response  
 $V_{IN} = 3.3V$ ,  $V_{OUT} = 1.8V$ , 6A Load Step (0.1A  $\leftrightarrow$  6A)  
Forced Continuous Mode  $F_{sw} = 2.25$  MHz  
External Compensation:  $R_{ith} = 43k$ ,  $C_{ith} = 220$  pF  
Trace 3: Output Voltage (100mV/div AC)  
Trace 4: Output Current (2A/div)



REVISION HISTORY			
ECO	REV	DESCRIPTION	DATE
-	2	PRODUCTION	10-30-09
		TOM G.	

**CUSTOMER NOTICE**  
 LINEAR TECHNOLOGY HAS MADE A BEST EFFORT TO DESIGN A CIRCUIT THAT MEETS CUSTOMER-SUPPLIED SPECIFICATIONS; HOWEVER, IT REMAINS THE CUSTOMER'S RESPONSIBILITY TO VERIFY PROPER AND RELIABLE OPERATION IN THE ACTUAL APPLICATION. COMPONENT SUBSTITUTION AND PRINTED CIRCUIT BOARD LAYOUT MAY SIGNIFICANTLY AFFECT CIRCUIT PERFORMANCE OR RELIABILITY. CONTACT LINEAR TECHNOLOGY APPLICATIONS ENGINEERING FOR ASSISTANCE.  
 THIS CIRCUIT IS PROPRIETARY TO LINEAR TECHNOLOGY AND SUPPLIED FOR USE WITH LINEAR TECHNOLOGY PARTS.

**CONTRACT NO.**  
**APPROVALS**  
 PCB DES. ANTON M. K.  
 ENG. TOM G.

**LINEAR TECHNOLOGY**  
 1630 McCarthy Blvd.  
 Milpitas, CA 95035  
 Phone: (408)432-1900  
 Fax: (408)434-6507  
 LTC Confidential-For Customer Use Only

**6A MONOLITHIC SYNCHRONOUS STEP-DOWN REGULATOR**  
**LTC3616EUDD**  
**DEMO CIRCUIT 1461A**

**TITLE: SCHEMATIC**  
**SIZE: A**  
**IC NO. A**  
**REV 2**  
**DATE: Friday, January 29, 2010**  
**SHEET 1 OF 1**

## Данный компонент на территории Российской Федерации

### Вы можете приобрести в компании MosChip.

Для оперативного оформления запроса Вам необходимо перейти по данной ссылке:

<http://moschip.ru/get-element>

Вы можете разместить у нас заказ для любого Вашего проекта, будь то серийное производство или разработка единичного прибора.

В нашем ассортименте представлены ведущие мировые производители активных и пассивных электронных компонентов.

Нашей специализацией является поставка электронной компонентной базы двойного назначения, продукции таких производителей как XILINX, Intel (ex.ALTERA), Vicor, Microchip, Texas Instruments, Analog Devices, Mini-Circuits, Amphenol, Glenair.

Сотрудничество с глобальными дистрибьюторами электронных компонентов, предоставляет возможность заказывать и получать с международных складов практически любой перечень компонентов в оптимальные для Вас сроки.

На всех этапах разработки и производства наши партнеры могут получить квалифицированную поддержку опытных инженеров.

Система менеджмента качества компании отвечает требованиям в соответствии с ГОСТ Р ИСО 9001, ГОСТ РВ 0015-002 и ЭС РД 009

### Офис по работе с юридическими лицами:

105318, г.Москва, ул.Щербаковская д.3, офис 1107, 1118, ДЦ «Щербаковский»

Телефон: +7 495 668-12-70 (многоканальный)

Факс: +7 495 668-12-70 (доб.304)

E-mail: [info@moschip.ru](mailto:info@moschip.ru)

Skype отдела продаж:

moschip.ru

moschip.ru\_4

moschip.ru\_6

moschip.ru\_9