

## VEU Series

### Features

- $4\phi \sim 18\phi$ , 105°C, 3,000 ~ 5,000 hours assured
- Long life assured
- Designed for surface mounting on high density PC board
- RoHS Compliance



Marking color: Black

### Specifications

Items	Performance																																	
Category Temperature Range	-55°C ~ +105°C																																	
Capacitance Tolerance	±20% (at 120Hz, 20°C)																																	
Leakage Current (at 20°C)	$I = 0.01CV$ or 3 (μA) whichever is greater (after 2 minutes) Where, C = rated capacitance in μF V = rated DC working voltage in V																																	
Tanδ (at 120Hz, 20°C)	<table border="1"> <thead> <tr> <th>Rated Voltage</th> <th>6.3</th> <th>10</th> <th>16</th> <th>25</th> <th>35</th> <th>50</th> <th>63</th> <th>80</th> <th>100</th> </tr> </thead> <tbody> <tr> <td>Tanδ (max)</td> <td>0.30</td> <td>0.24</td> <td>0.20</td> <td>0.16</td> <td>0.13</td> <td>0.12</td> <td>0.09</td> <td>0.08</td> <td>0.07</td> </tr> </tbody> </table>	Rated Voltage	6.3	10	16	25	35	50	63	80	100	Tanδ (max)	0.30	0.24	0.20	0.16	0.13	0.12	0.09	0.08	0.07													
Rated Voltage	6.3	10	16	25	35	50	63	80	100																									
Tanδ (max)	0.30	0.24	0.20	0.16	0.13	0.12	0.09	0.08	0.07																									
Low Temperature Characteristics (at 120Hz)	<p>Impedance ratio shall not exceed the values given in the table below.</p> <table border="1"> <thead> <tr> <th colspan="2">Rated Voltage</th> <th>6.3</th> <th>10</th> <th>16</th> <th>25</th> <th>35</th> <th>50</th> <th>63</th> <th>80</th> <th>100</th> </tr> </thead> <tbody> <tr> <td>Impedance</td> <td>Z(-25°C)/Z(+20°C)</td> <td>4</td> <td>3</td> <td>2</td> <td>2</td> <td>2</td> <td>2</td> <td>2</td> <td>2</td> <td>2</td> </tr> <tr> <td>Ratio</td> <td>Z(-55°C)/Z(+20°C)</td> <td>10</td> <td>7</td> <td>5</td> <td>3</td> <td>3</td> <td>3</td> <td>3</td> <td>3</td> <td>3</td> </tr> </tbody> </table>	Rated Voltage		6.3	10	16	25	35	50	63	80	100	Impedance	Z(-25°C)/Z(+20°C)	4	3	2	2	2	2	2	2	2	Ratio	Z(-55°C)/Z(+20°C)	10	7	5	3	3	3	3	3	3
Rated Voltage		6.3	10	16	25	35	50	63	80	100																								
Impedance	Z(-25°C)/Z(+20°C)	4	3	2	2	2	2	2	2	2																								
Ratio	Z(-55°C)/Z(+20°C)	10	7	5	3	3	3	3	3	3																								
Endurance	<table border="1"> <thead> <tr> <th>Test Time</th> <td>3,000 Hrs for <math>\phi D \leq 10</math> mm; 5,000 Hrs for <math>\phi D \geq 12.5</math> mm</td> </tr> <tr> <th>Capacitance Change</th> <td>Within ±30% of initial value</td> </tr> <tr> <th>Tanδ</th> <td>Less than 300% of specified value</td> </tr> <tr> <th>Leakage Current</th> <td>Within specified value</td> </tr> </thead> </table> <p>* The above Specifications shall be satisfied when the capacitors are restored to 20°C after the rated voltage applied for 3,000 ~ 5,000 hours at 105°C.</p>	Test Time	3,000 Hrs for $\phi D \leq 10$ mm; 5,000 Hrs for $\phi D \geq 12.5$ mm	Capacitance Change	Within ±30% of initial value	Tanδ	Less than 300% of specified value	Leakage Current	Within specified value																									
Test Time	3,000 Hrs for $\phi D \leq 10$ mm; 5,000 Hrs for $\phi D \geq 12.5$ mm																																	
Capacitance Change	Within ±30% of initial value																																	
Tanδ	Less than 300% of specified value																																	
Leakage Current	Within specified value																																	
Shelf Life Test	<table border="1"> <thead> <tr> <th>Test Time</th> <td>1,000 Hrs</td> </tr> <tr> <th>Capacitance Change</th> <td>Within ±30% of initial value</td> </tr> <tr> <th>Tanδ</th> <td>Less than 300% of specified value</td> </tr> <tr> <th>Leakage Current</th> <td>Within specified value</td> </tr> </thead> </table> <p>* The above Specifications shall be satisfied when the capacitors are restored to 20°C after exposing them for 1,000 hours at 105°C without voltage applied.</p>	Test Time	1,000 Hrs	Capacitance Change	Within ±30% of initial value	Tanδ	Less than 300% of specified value	Leakage Current	Within specified value																									
Test Time	1,000 Hrs																																	
Capacitance Change	Within ±30% of initial value																																	
Tanδ	Less than 300% of specified value																																	
Leakage Current	Within specified value																																	
Ripple Current & Frequency Multipliers	<table border="1"> <thead> <tr> <th rowspan="2">Cap.(μF)</th> <th colspan="4">Frequency (Hz)</th> </tr> <tr> <th>50</th> <th>120</th> <th>1k</th> <th>10k up</th> </tr> </thead> <tbody> <tr> <td>Under 1,000</td> <td>0.70</td> <td>1.00</td> <td>1.30</td> <td>1.40</td> </tr> <tr> <td>1,000 &lt; C ≤ 1,500</td> <td>0.85</td> <td>1.00</td> <td>1.13</td> <td>1.15</td> </tr> </tbody> </table>	Cap.(μF)	Frequency (Hz)				50	120	1k	10k up	Under 1,000	0.70	1.00	1.30	1.40	1,000 < C ≤ 1,500	0.85	1.00	1.13	1.15														
Cap.(μF)	Frequency (Hz)																																	
	50	120	1k	10k up																														
Under 1,000	0.70	1.00	1.30	1.40																														
1,000 < C ≤ 1,500	0.85	1.00	1.13	1.15																														

### Diagram of Dimensions

Fig. 1

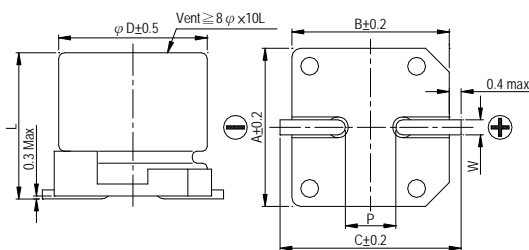
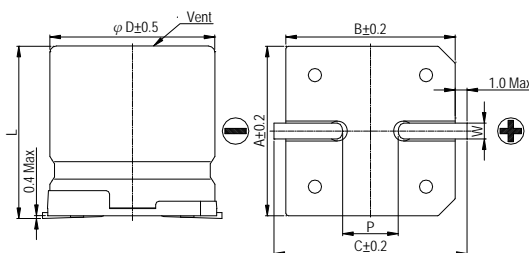


Fig. 2



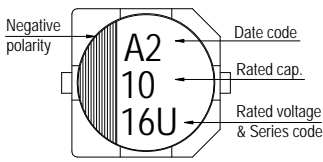
Lead Spacing and Diameter

Unit: mm

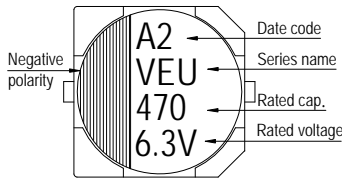
φ D	L	A	B	C	W	P ± 0.2	Fig. No.
4	5.7 ± 0.3	4.3	4.3	5.1	0.5 ~ 0.8	1.0	1
5	5.7 ± 0.3	5.3	5.3	5.9	0.5 ~ 0.8	1.5	1
6.3	5.7 ± 0.3	6.6	6.6	7.2	0.5 ~ 0.8	2.0	1
6.3	7.7 ± 0.3	6.6	6.6	7.2	0.5 ~ 0.8	2.0	1
8	10 ± 0.5	8.4	8.4	9.0	0.7 ~ 1.1	3.1	1
10	10 ± 0.5	10.4	10.4	11.0	0.7 ~ 1.3	4.7	1
12.5	13.5 ± 0.5	13.0	13.0	13.7	1.1 ~ 1.4	4.4	2
12.5	16 ± 0.5	13.0	13.0	13.7	1.1 ~ 1.4	4.4	2
16	16.5 ± 0.5	17.0	17.0	18.0	1.1 ~ 1.4	6.4	2
18	16.5 ± 0.5	19.0	19.0	20.0	1.1 ~ 1.4	6.4	2

## Marking

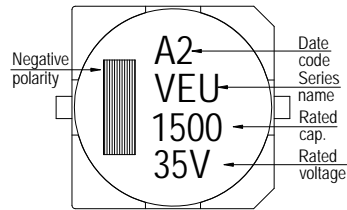
$\phi D \leq 6.3\text{mm}$



$\phi D = 8 \sim 10 \text{ mm}$



$\phi D \geq 12.5\text{mm}$



## Dimension & Permissible Ripple Current

Dimension:  $\phi D \times L(\text{mm})$

Ripple Current: mA/rms at 120 Hz, 105°C

$\mu\text{F}$	V <sub>DC</sub> Contents	6.3V (0J)		10V (1A)		16V (1C)		25V (1E)		35V (1V)		50V (1H)		63V (1J)		80V (1K)	
		$\phi D \times L$	mA	$\phi D \times L$	mA	$\phi D \times L$	mA	$\phi D \times L$	mA	$\phi D \times L$	mA	$\phi D \times L$	mA	$\phi D \times L$	mA	$\phi D \times L$	mA
1	010											4×5.7	8				
2.2	2R2											4×5.7	12				
3.3	3R3											4×5.7	17				
4.7	4R7									4×5.7	16	5×5.7	22				
10	100					4×5.7	18	5×5.7	27	5×5.7	27	6.3×5.7	32				
22	220	4×5.7	22	4×5.7	30	5×5.7	30	6.3×5.7	44	6.3×5.7	44	6.3×7.7	58				
33	330	5×5.7	35	5×5.7	35	6.3×5.7	48	6.3×5.7	50	6.3×7.7	57	8×10	130				
47	470	5×5.7	38	6.3×5.7	50	6.3×5.7	50	6.3×7.7	63	8×10	92	8×10	141				
100	101	6.3×5.7	69	6.3×7.7	81	6.3×7.7	81	8×10	116	10×10	151	10×10	310			12.5×13.5	220
150	151													12.5×13.5	240	12.5×16	290
220	221	6.3×7.7	120	8×10	141	8×10	141	10×10	290	10×10	320	12.5×13.5	280	12.5×16	320	16×16.5	410
330	331	8×10	290	10×10	290	10×10	290	10×10	320	12.5×13.5	320	12.5×16	360	16×16.5	450	16×16.5	510
470	471	10×10	320	10×10	320	10×10	320			12.5×16	410	16×16.5	510	16×16.5	540	18×16.5	650
1,000	102	10×10	410							16×16.5	690	18×16.5	780				
1,500	152									18×16.5	900						

$\mu\text{F}$	V <sub>DC</sub> Contents	100V (2A)	
		$\phi D \times L$	mA
68	680	12.5×13.5	180
100	101	12.5×16	240
150	151	16×16.5	340
220	221	16×16.5	410
330	331	18×16.5	540

## Part Numbering System

VEU series    470 $\mu\text{F}$      $\pm 20\%$     6.3V    Carrier Tape    10  $\phi \times 10\text{L}$     Pb-free and PET coating case

**VEU**    **471**    **M**    **0J**    **TR**    -    **1010**

Series name    Capacitance    Capacitance Tolerance    Rated Voltage    Package Type    Terminal Type    Case size    Lead Wire and Coating Type

Note: For more details, please refer to "Part Numbering System (SMD Type)" on page 12.

## Данный компонент на территории Российской Федерации

### Вы можете приобрести в компании MosChip.

Для оперативного оформления запроса Вам необходимо перейти по данной ссылке:

<http://moschip.ru/get-element>

Вы можете разместить у нас заказ для любого Вашего проекта, будь то серийное производство или разработка единичного прибора.

В нашем ассортименте представлены ведущие мировые производители активных и пассивных электронных компонентов.

Нашей специализацией является поставка электронной компонентной базы двойного назначения, продукции таких производителей как XILINX, Intel (ex.ALTERA), Vicor, Microchip, Texas Instruments, Analog Devices, Mini-Circuits, Amphenol, Glenair.

Сотрудничество с глобальными дистрибьюторами электронных компонентов, предоставляет возможность заказывать и получать с международных складов практически любой перечень компонентов в оптимальные для Вас сроки.

На всех этапах разработки и производства наши партнеры могут получить квалифицированную поддержку опытных инженеров.

Система менеджмента качества компании отвечает требованиям в соответствии с ГОСТ Р ИСО 9001, ГОСТ РВ 0015-002 и ЭС РД 009

### Офис по работе с юридическими лицами:

105318, г.Москва, ул.Щербаковская д.3, офис 1107, 1118, ДЦ «Щербаковский»

Телефон: +7 495 668-12-70 (многоканальный)

Факс: +7 495 668-12-70 (доб.304)

E-mail: [info@moschip.ru](mailto:info@moschip.ru)

Skype отдела продаж:

moschip.ru

moschip.ru\_4

moschip.ru\_6

moschip.ru\_9