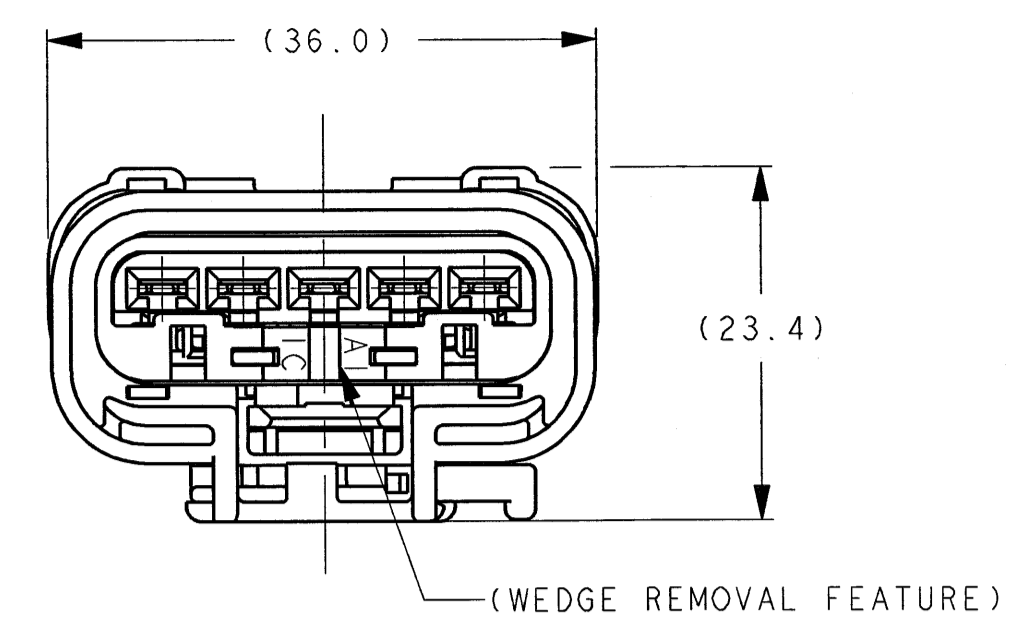
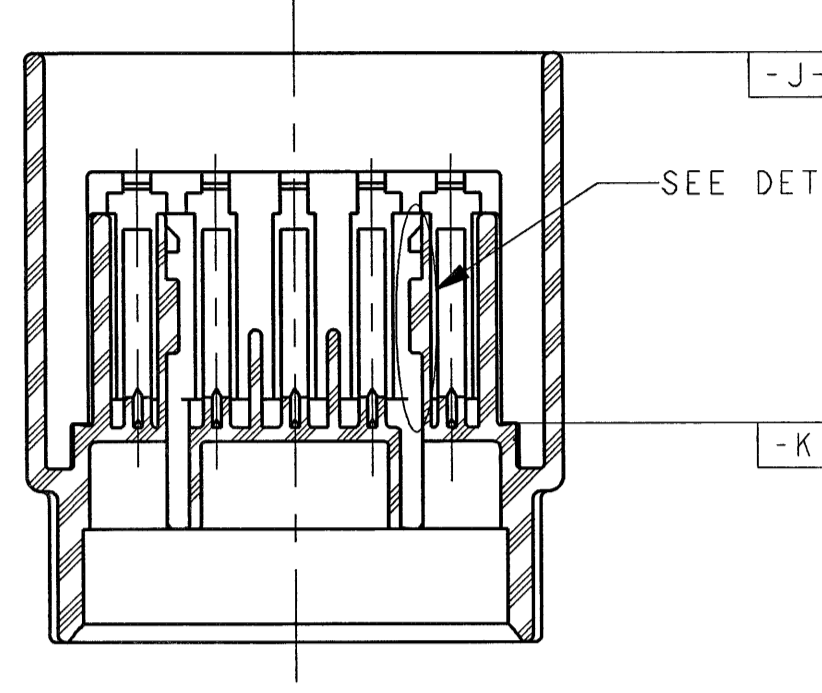
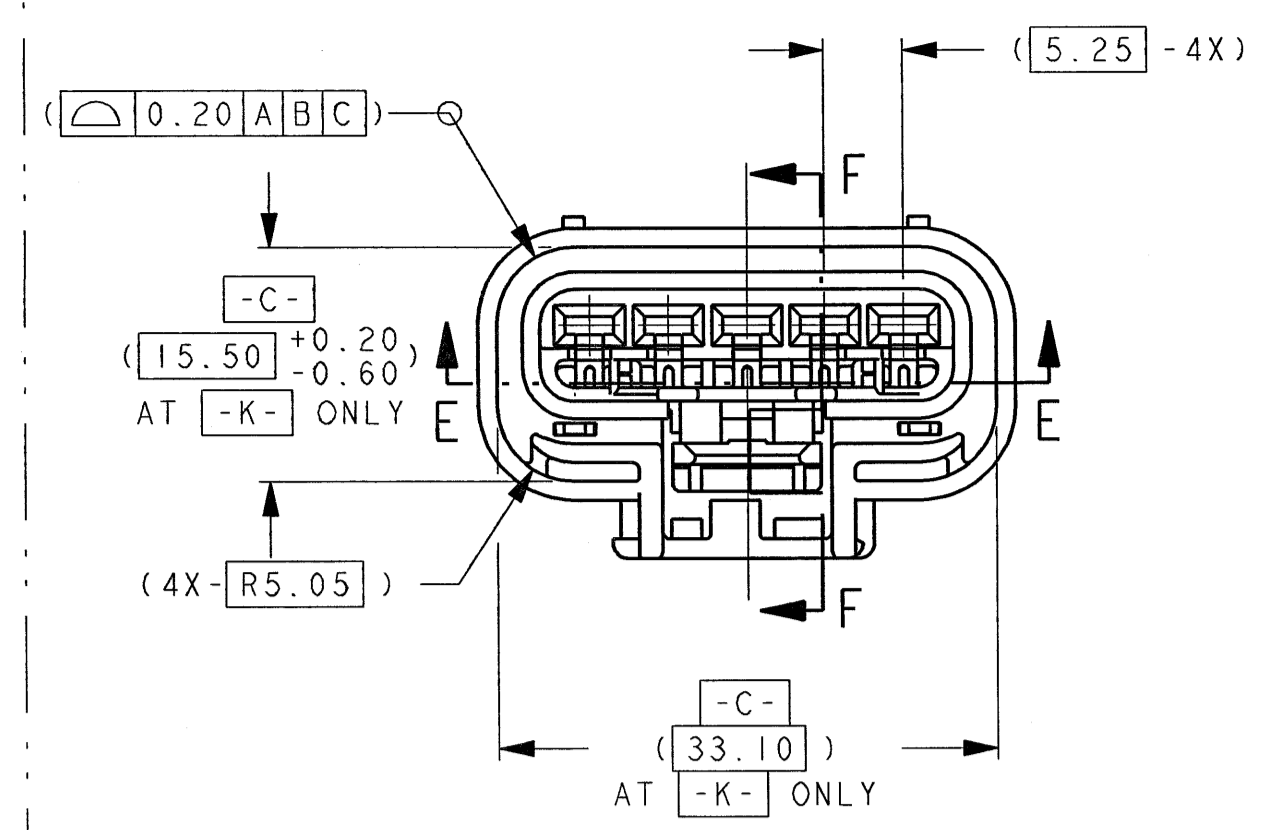


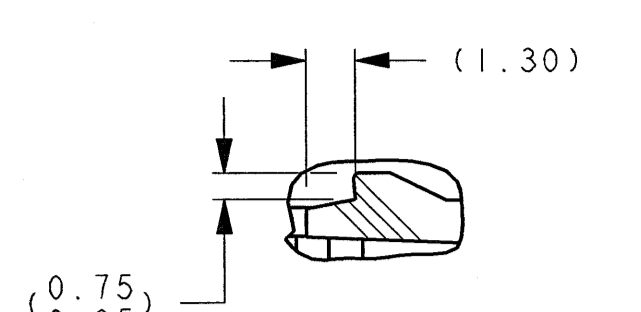
END VIEW W/O CPA



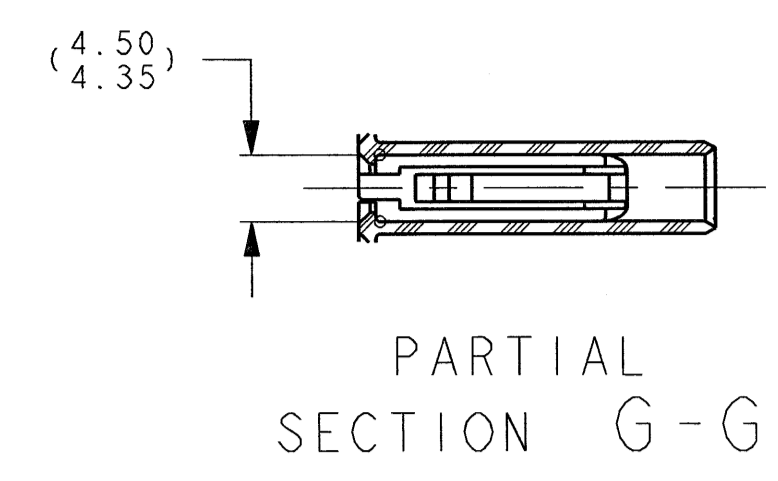
END VIEW W/CPA



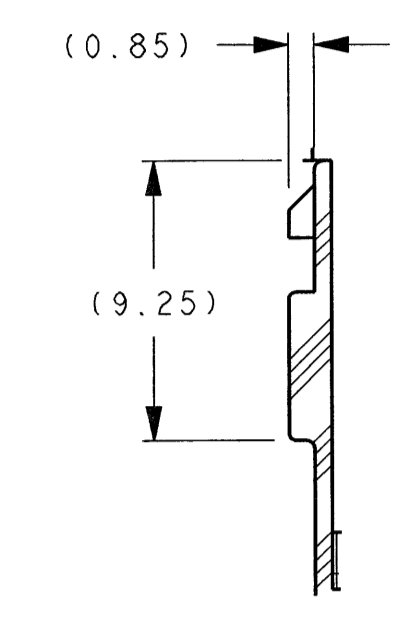
SECTION E-E FOR REFERENCE ONLY INSULATOR VIEWS



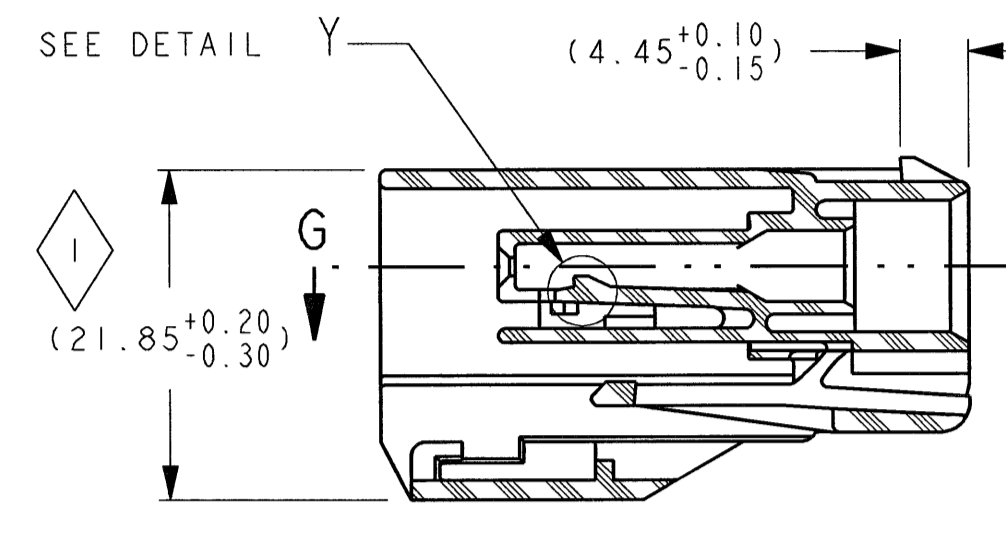
DETAIL Y TERM. LOCK, FINGER SCALE 5X



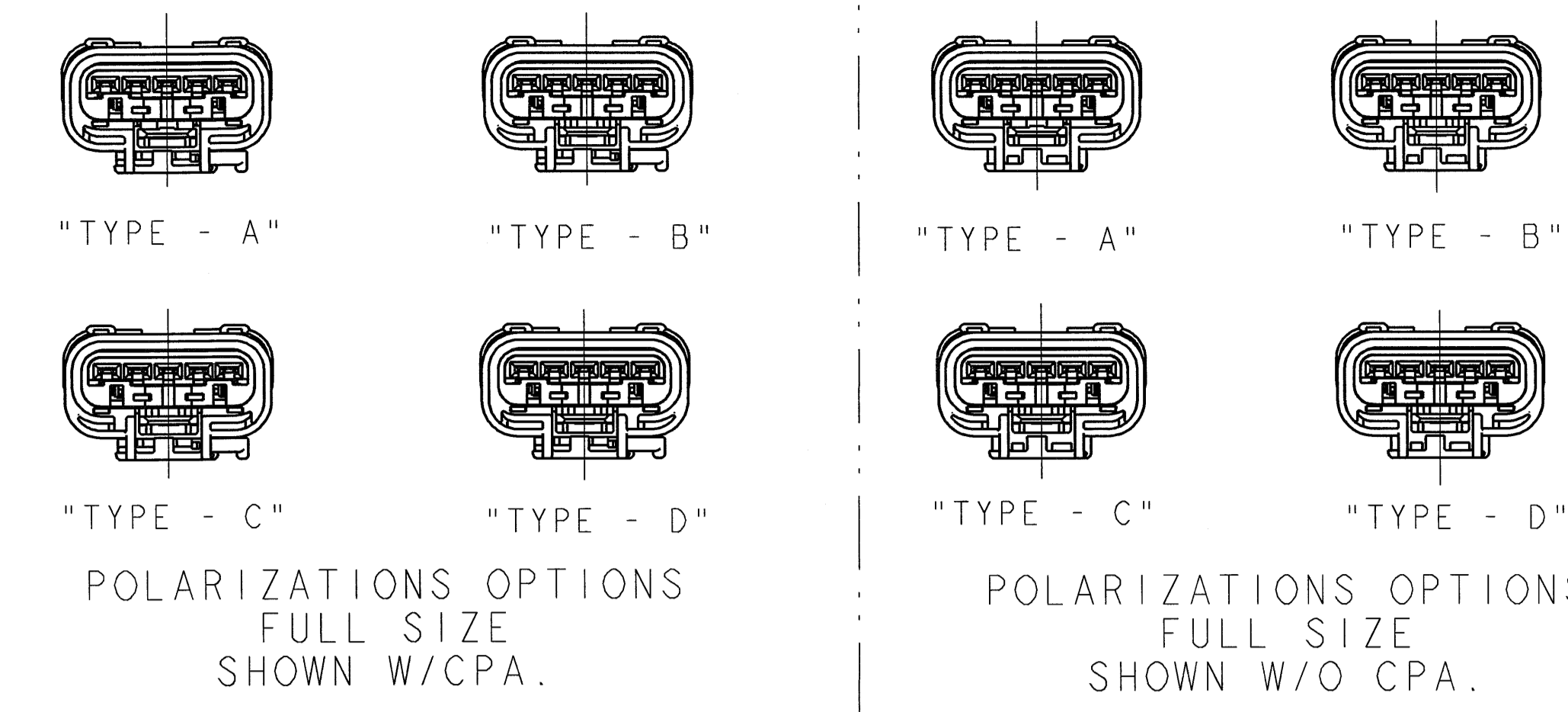
PARTIAL SECTION G-G



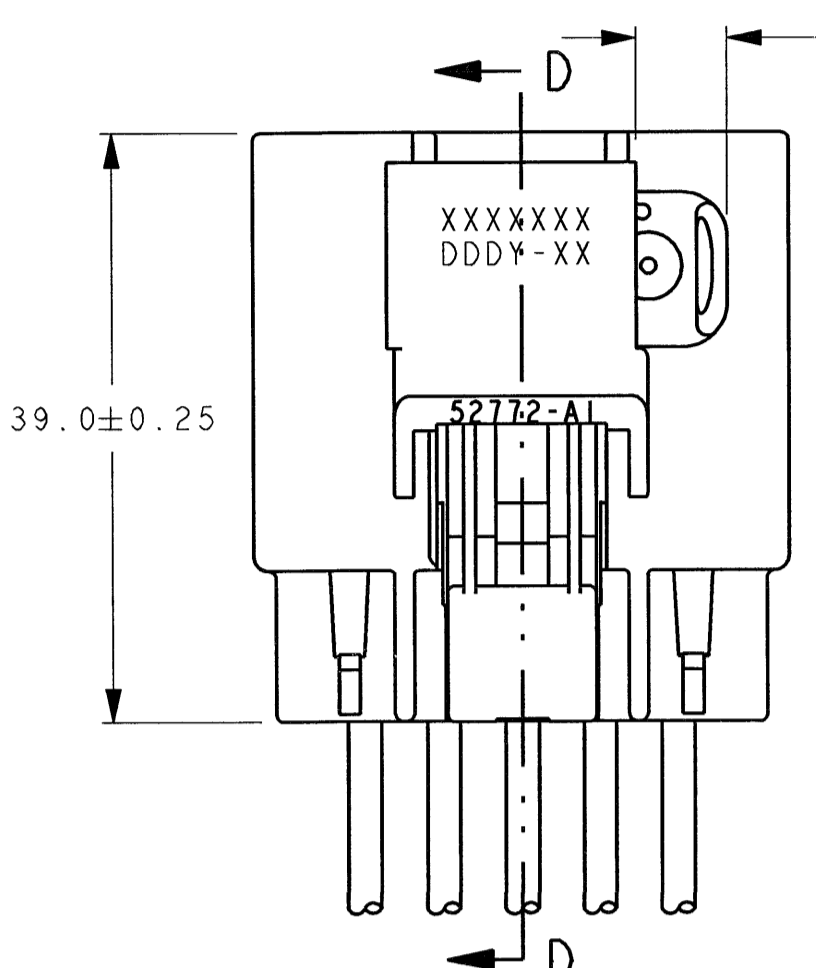
DETAIL Z SCALE 4X



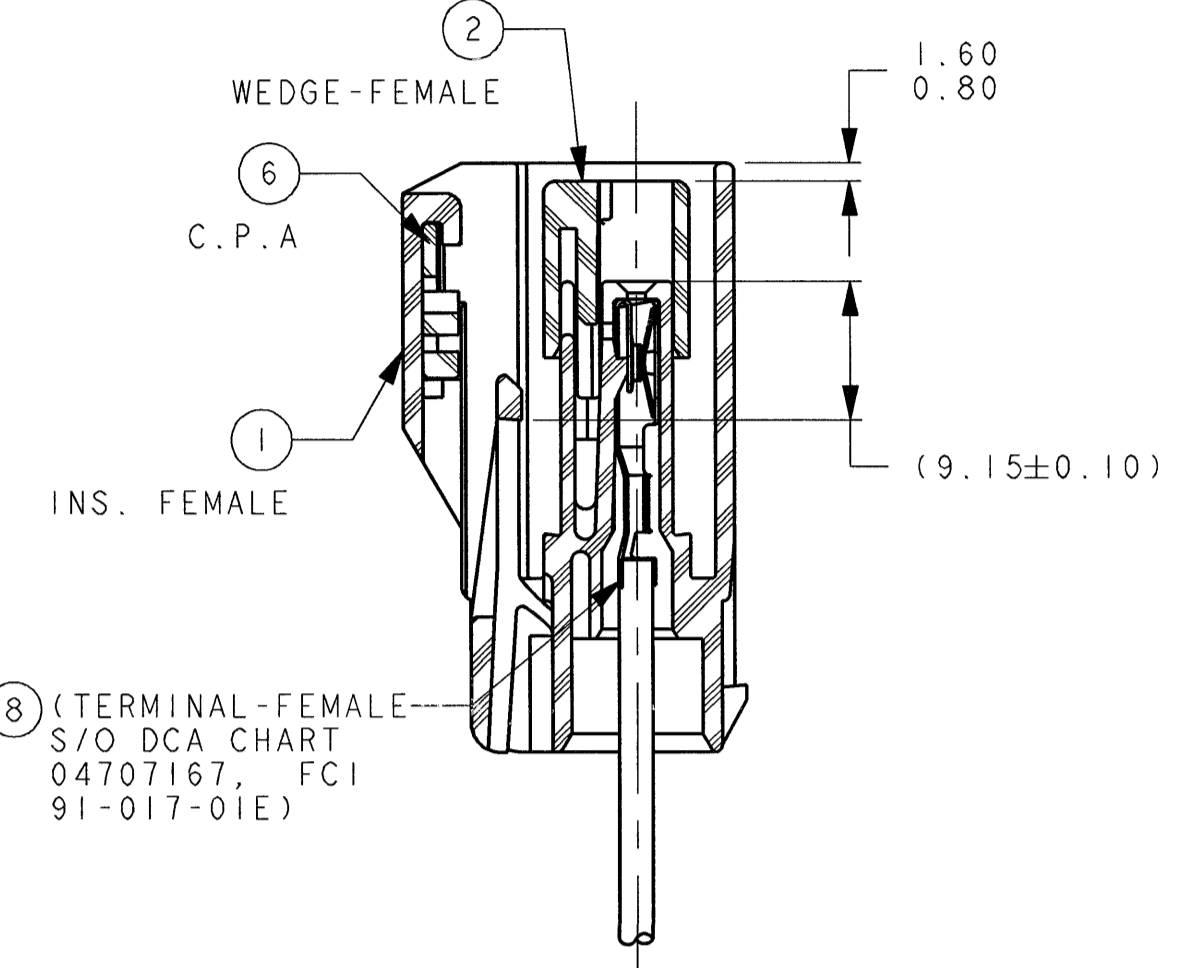
SECTION F-F



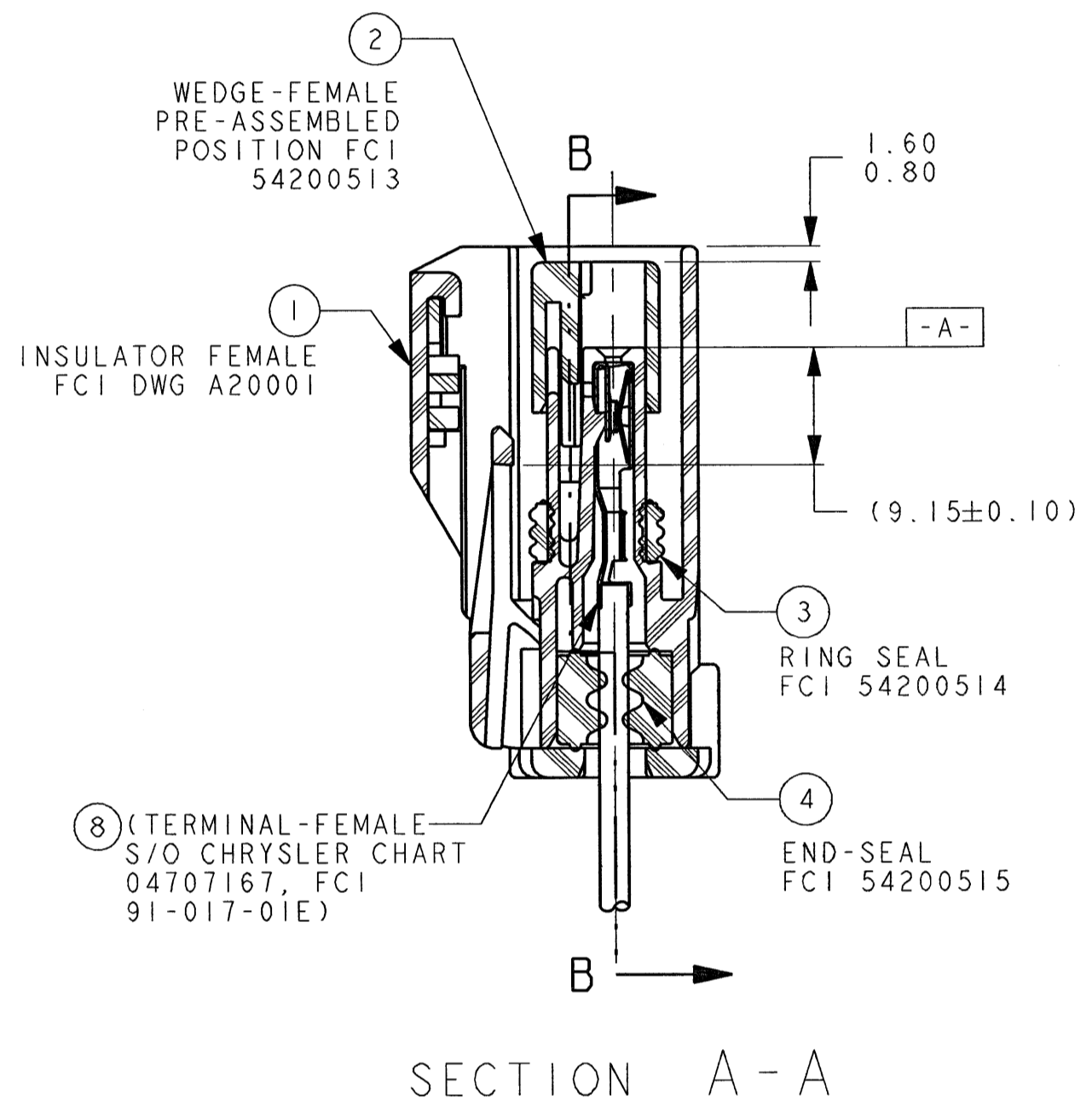
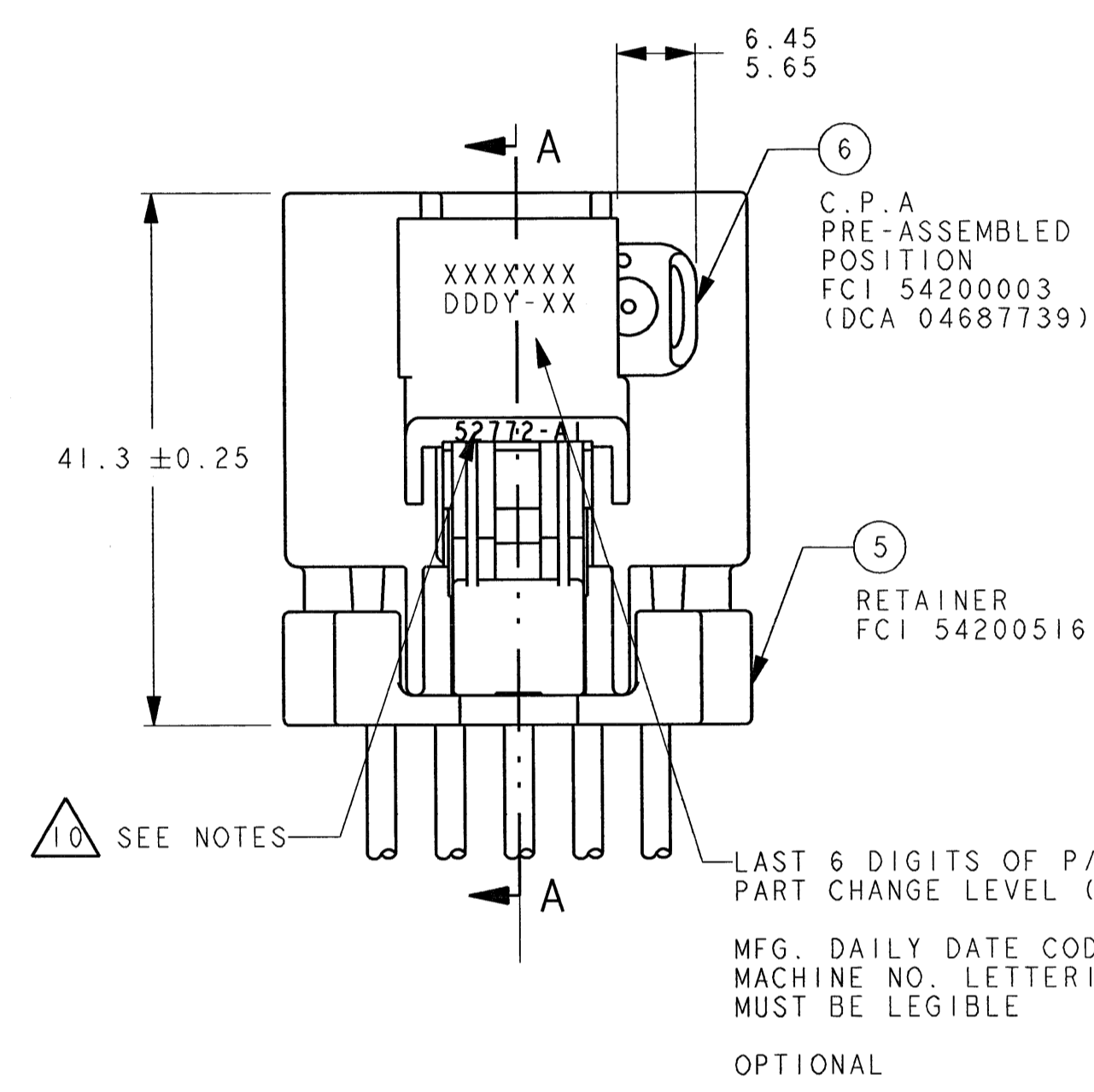
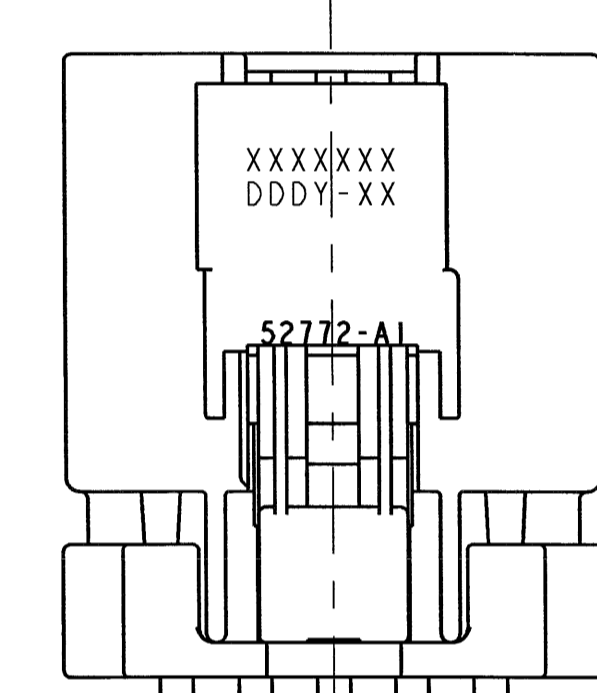
POLARIZATIONS OPTIONS FULL SIZE SHOWN W/CPA. POLARIZATIONS OPTIONS FULL SIZE SHOWN W/O CPA.



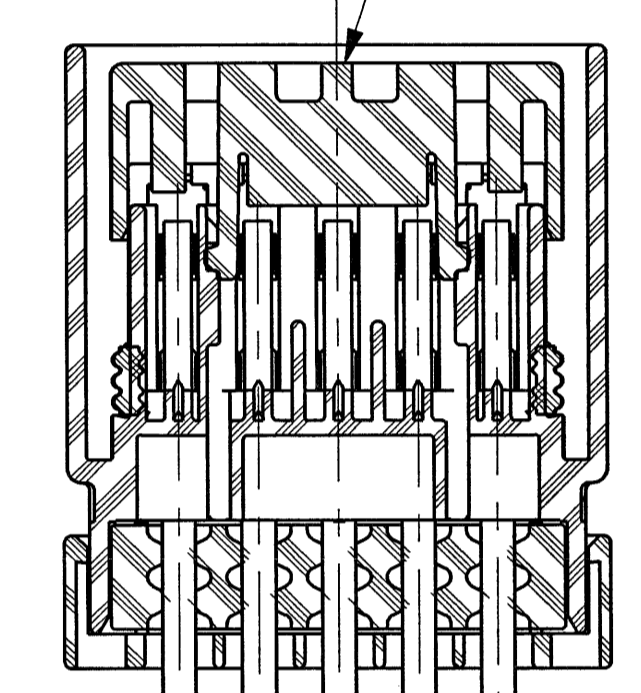
UNSEALED ASSEMBLY VIEW SHIPPED WITHOUT SEALS AND RETAINER



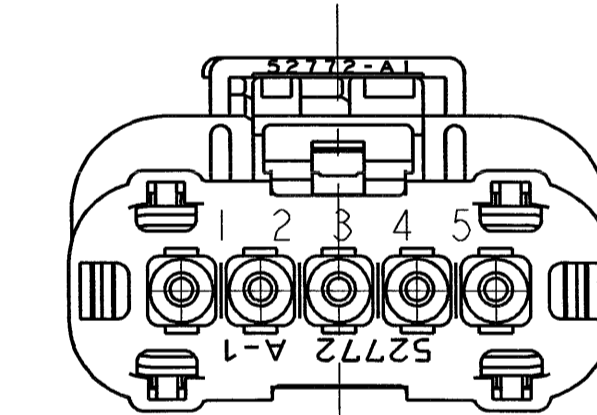
SECTION D-D



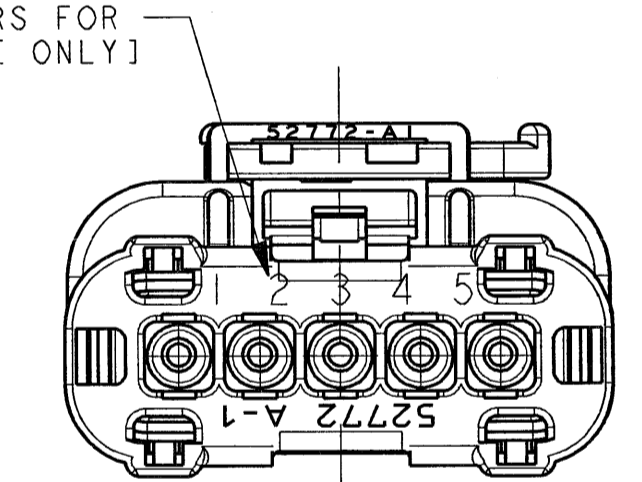
SECTION A-A



SECTION B-B



WITHOUT CPA SEE P/N CHART ALL DIMENSIONS SAME AS WITH CPA VIEWS



SEALED ASSEMBLY VIEWS SEE P/N CHART SHOWN WITH CPA

NOTES:
 1. QUALITY ASSURANCE REQUIREMENTS PER DCA PS-7300: 1
 2. ENGINEERING APPROVAL OF SUPPLIER SAMPLES IS REQUIRED PRIOR TO AUTHORIZATION OF PART PRODUCTION.
 3. CHANGES IN DESIGN COMPOSITION OR PROCESSING FROM THE PART PREVIOUSLY APPROVED FOR PART PRODUCTION REQUIRES PRIOR ENGINEERING APPROVAL
 4. WIRING FABRICATORS MUST PURCHASE FROM SOURCES SHOWN
 5. ALL THE SEALED CONNECTOR APPLICATIONS MUST BE USED WITH CHRYSLER WIRE SPEC. MS-8288 OR MS-9502 THIN WALL X-LINK 20, 18, 16 & 14 GAGE WIRES ONLY, UNLESS OTHERWISE SPECIFIED (WIRE INSULATIONS Ø1.70 MIN TO Ø2.70 MAX)
 6. ALL NON-SEALED APPLICATIONS MAY BE USED WITH ANY WIRE INSULATION 22 GAGE THRU 10 GAGE (EXCEPT AS NOTED) PROVIDING THAT A TERMINAL GRIP FOR THAT CORE/INSULATION COMBINATION IS SHOWN ON THE FEMALE TERMINAL DRAWING

- MAX. INSULATION CRIMP WIDTH = 4.50
- MAX. INSULATION CRIMP HEIGHT = 4.50
- MAX. INSULATION DIA. = 4.09 (10 GA THIN WALL)
- USE WITH CAVITY PLUG, FCI P/N 54200005, (CHRYSLER P/N 56038308) WHEN REQ'D USE WITH 2.80MM APEX FEM TERM PER C15004-CUST SYM ABOUT CENTERLINE FOR 180° ORIENTATION
- DIRECT CONNECT DRAWING NO. G36005 (CHRYSLER 04793884AA)
- TEST METHOD PER CHRYSLER PERFORMANCE SPEC# PF-9600, CONNECTOR ENGAGE & DISENGAGE WITH LATCH DEPRESSED FORCE NOT TO EXCEED 90 N. FOR THIS SYSTEM
- CPA SEATING FORCES - 40 N. MAX
WEDGE SEATING FORCES - 100 N. MAX
- SUPPLIER, MOLD & CAVITY I.D. SIGNIFIES TOOL OWNERSHIP, FOR REFERENCE
- ANNUAL QUALITY REQUIREMENTS: IT IS PERMISSIBLE TO PERFORM CONTINUOUS CONFORMANCE PER FCI SPECIFICATION #AQA-001 INSTEAD OF ANNUAL LAYOUT & ANNUAL PV REQUIREMENTS OF QS-9000 SECTION 2 & PF-9600

ALL NON-REFERENCE DIMENSIONS ARE REQUIRED DIMENSIONAL AS NOTED BELOW:
 - USE INDEX A, BLACK SEALED AND UNSEALED FOR ALL AFFECTED INSULATOR CAVITIES
 - CURRENT PRODUCTION TOOLING
 - POINT OF LAST RUN

CONNECTOR VALIDATED TO PF-9600 WITH THE FOLLOWING EXCEPTIONS:
 TEST 5.3.4 VIBRATION/MECHANICAL SHOCK, TEST 5.3.9 THERMAL SHOCK, TEST 5.3.10 TEMPERATURE/HUMIDITY CYCLING AND TEST 5.3.11 HIGH TEMPERATURE EXPOSURE

SERVICE TOOLING GUIDE INFORMATION PER APEX TRAINING MANUAL
 MUST CONFORM TO THE FOLLOWING CHRYSLER/YNA STANDARDS:

PF-9600 PERFORMANCE (CHRYSLER) EXCEPT AS NOTED ABOVE
 PS-7300 QUALITY ASSURANCE (CHRYSLER)
 PS-4480-CEK-4 (CHRYSLER PART I.D., (G-009-2 YNA)
 PS-9065 REGRIND (CHRYSLER) (G-009-3 YNA)
 PS-9227 DATA EXCHANGE (CHRYSLER) (G-009-7 YNA)
 PS-10052 INFORMATION SECURITY (CHRYSLER)

THIS DRAWING (H59006) REPLACES CHRYSLER DRAWING NO 04793886AA LEVEL "C" CHRYSLER DRAWING IS FOR REFERENCE ONLY
 FCI P/N WITH SUFFIX "N" DESIGNATES ASSEMBLIES W/O CPA

CHRYSLER APPLICATION	ASSEMBLY PART NUMBERS							
	UNSEALED				SEALED			
	W/O CPA	W/CPA	W/CPA	W/O CPA	W/O CPA	W/CPA	W/CPA	W/O CPA
FCI P/N'S (DCA P/N'S)	54200517N	54200518N	54200519N	54200520N	54200521N	54200522N	54200523N	54200524N

MATING PART NUMBER CHART					
D	NATURAL	UNSEALED	54200520N	N/A	DIRECT CONNECT APPLICATION
C	DK GREY	UNSEALED	54200520	04793894AA	DIRECT CONNECT APPLICATION
		SEALED	54200524N	N/A	DIRECT CONNECT APPLICATION
B	LT GRAY	UNSEALED	54200519N	04793893AA	DIRECT CONNECT APPLICATION
		SEALED	54200523N	N/A	DIRECT CONNECT APPLICATION
A	BLACK	UNSEALED	54200518N	04793889AA	DIRECT CONNECT APPLICATION
		SEALED	54200522N	N/A	DIRECT CONNECT APPLICATION
INDEX TYPE	COLOR	SEALED/UNSEALED	54200517N	04793891AA	DIRECT CONNECT APPLICATION
			54200517	04793891AA	DIRECT CONNECT APPLICATION
			FCI (CHRYSLER)	FCI (CHRYSLER)	DIRECT CONNECT APPLICATION
			FCI (CHRYSLER)	FCI (CHRYSLER)	DIRECT CONNECT APPLICATION
			CHRYSLER APPLICATION	CHRYSLER APPLICATION	DIRECT CONNECT APPLICATION
			FEMALE ASSEMBLY PART NUMBERS	FEMALE ASSEMBLY PART NUMBERS	DIRECT CONNECT APPLICATION
			MATING ASSEMBLY PART NUMBERS	MATING ASSEMBLY PART NUMBERS	DIRECT CONNECT APPLICATION

REQUIRED	REQUIRED	ITEM	FCI P/N	ITC P/N	PART NAME
I	I	1	54200505	A20001A	INSULATOR-FEMALE INDEX A; BLK (NYLON)
I	I	2	54200506	A20001B	INSULATOR-FEMALE INDEX B; LT GRAY (NYLON)
I	I	3	54200507	A20001C	INSULATOR-FEMALE INDEX C; DK GRAY (NYLON)
I	I	4	54200508	A20001D	INSULATOR-FEMALE INDEX D; NATURAL (NYLON)
I	I	5	54200513	A20003	WEDGE-FEMALE; ROYAL BLUE (NYLON)
I	I	6	54200514	A20007	RING SEAL; RED (SILICONE)
I	I	7	54200515	A20006	END SEAL; LT BLUE (SILICONE)
I	I	8	54200516	A20005	RETAINER; BLACK (NYLON)
I	I	9	54200003	*04687739	CPA LATCH; RED (NYLON)

FCI - FRAMATOME CONNECTORS INTERNATIONAL
 ITC - INTERLOCK TERMINAL CORPORATION

* DCA PART NUMBER

10/91	03-24-08	FF	ALL USE WITH 2.80MM APEX FEMALE TERMINAL HOPE ABOVE FOR 180° ORIENTATION, CHRYSLER WAS DCA	ANGL	SSS
REV	DATE	BY	REVISION	DATE	BY
2.8MM APEX					
THIS DRAWING AND ALL OTHER INFORMATION CONTAINED THEREIN IS THE PROPERTY OF FCI. IT IS TO BE USED ONLY FOR THE PURPOSES SPECIFIED AND IS NOT TO BE REPRODUCED OR TRANSMITTED IN ANY FORM OR BY ANY MEANS WITHOUT THE WRITTEN PERMISSION OF FCI.					
DO NOT SCALE DRAWING					
DATE	NAME	ASSG	CHK'D	DATE	BY
11-29-85	WATKIN				
PART NUMBER			CUSTOMER		
FCI			H59006		
TITLE			5-WAY FEMALE (2.80MM APEX CONN. SYS.)		
DRAWING NUMBER			SCALE 2:1		

Данный компонент на территории Российской Федерации

Вы можете приобрести в компании MosChip.

Для оперативного оформления запроса Вам необходимо перейти по данной ссылке:

<http://moschip.ru/get-element>

Вы можете разместить у нас заказ для любого Вашего проекта, будь то серийное производство или разработка единичного прибора.

В нашем ассортименте представлены ведущие мировые производители активных и пассивных электронных компонентов.

Нашей специализацией является поставка электронной компонентной базы двойного назначения, продукции таких производителей как XILINX, Intel (ex.ALTERA), Vicor, Microchip, Texas Instruments, Analog Devices, Mini-Circuits, Amphenol, Glenair.

Сотрудничество с глобальными дистрибьюторами электронных компонентов, предоставляет возможность заказывать и получать с международных складов практически любой перечень компонентов в оптимальные для Вас сроки.

На всех этапах разработки и производства наши партнеры могут получить квалифицированную поддержку опытных инженеров.

Система менеджмента качества компании отвечает требованиям в соответствии с ГОСТ Р ИСО 9001, ГОСТ РВ 0015-002 и ЭС РД 009

Офис по работе с юридическими лицами:

105318, г.Москва, ул.Щербаковская д.3, офис 1107, 1118, ДЦ «Щербаковский»

Телефон: +7 495 668-12-70 (многоканальный)

Факс: +7 495 668-12-70 (доб.304)

E-mail: info@moschip.ru

Skype отдела продаж:

moschip.ru

moschip.ru_4

moschip.ru_6

moschip.ru_9