

**Description: MiMo LTE, GNSS Vehicle Mount  
Antenna**

**Series: Panther**

**PART NUMBER: GPSMB301, GPSMB302, GPSMB301R,  
GPSMB302R**



**Features:**

- Supports LTE 698-960/1695-2170/2300-2700/2900-3600MHz(MIMO)
- Supports Beidou, GPS, Galileo, GLONASS
- Direct Mount and optional Magnetic Mount features
- See GPSMBMM for magnetic mount details

**Applications:**

- Energy (Utility Vehicles)
- First Responders (Police, Ambulance, Fire)
- Fleet Management
- Location based services
- Telematics
- Railroad

All dimensions are in mm / inches

Issue: 1823

In the effort to improve our products, we reserve the right to make changes judged to be necessary.

CONFIDENTIAL AND PROPRIETARY INFORMATION

This document contains confidential and proprietary information of Pulse Electronics, Inc. (Pulse) and is protected by copyright, trade secret and other state and federal laws. Its receipt or possession does not convey any rights to reproduce, disclose its contents, or to manufacture, use or sell anything it may describe. Reproduction, disclosure or use without specific written authorization of Pulse is strictly forbidden.

For more information:

Pulse Worldwide Headquarters  
12220 World Trade Drive  
San Diego, CA 92128  
USA  
Tel: 1-858-674-8100

Pulse/Larsen Antennas  
18110 SE 34<sup>th</sup> St Bldg 2 Suite 250  
Vancouver, WA 98683  
USA  
Tel: 1-360-944-7551

Europe Headquarters  
Pulse GmbH & Do, KG  
Zeppelinstrasse 15  
Herrenberg, Germany  
Tel: 49 7032 7806 0

Pulse (Suzhou) Wireless Products Co, Inc.  
99 Huo Ju Road(#29 Bldg,4<sup>th</sup> Phase  
Suzhou New District  
Jiangsu Province, Suzhou 215009 PR China  
Tel: 86 512 6807 9998



**Description: MiMo LTE, GNSS Vehicle Mount Antenna**

**Series: Panther**

**PART NUMBER: GPSMB301, GPSMB302, GPSMB301R, GPSMB302R**

**This document covers all product variants of the following product family**

Model No.	Color	Remark
GPSMB301	Black	
GPSMB302	White	
GPSMB301R	Black	Compliant with EN 50155, EN 61373, EN45545-2, railroad application.
GPSMB302R	White	Compliant with EN 50155, EN 61373, EN45545-2, railroad application.

Issue: 1823

In the effort to improve our products, we reserve the right to make changes judged to be necessary.

CONFIDENTIAL AND PROPRIETARY INFORMATION

This document contains confidential and proprietary information of Pulse Electronics, Inc. (Pulse) and is protected by copyright, trade secret and other state and federal laws. Its receipt or possession does not convey any rights to reproduce, disclose its contents, or to manufacture, use or sell anything it may describe. Reproduction, disclosure or use without specific written authorization of Pulse is strictly forbidden.

For more information:

Pulse Worldwide Headquarters  
12220 World Trade Drive  
San Diego, CA 92128  
USA  
Tel: 1-858-674-8100

Pulse/Larsen Antennas  
18110 SE 34<sup>th</sup> St Bldg 2 Suite 250  
Vancouver, WA 98683  
USA  
Tel: 1-360-944-7551

Europe Headquarters  
Pulse GmbH & Do, KG  
Zeppelinstrasse 15  
Herrenberg, Germany  
Tel: 49 7032 7806 0

Pulse (Suzhou) Wireless Products Co, Inc.  
99 Huo Ju Road(#29 Bldg,4<sup>th</sup> Phase  
Suzhou New District  
Jiangsu Province, Suzhou 215009 PR China  
Tel: 86 512 6807 9998



**Description: MiMo LTE, GNSS Vehicle Mount Antenna**

**Series: Panther**

**PART NUMBER: GPSMB301, GPSMB302, GPSMB301R, GPSMB302R**

**ELECTRICAL SPECIFICATIONS**

Frequency (LTE)	698 – 960 / 1695 - 2170 / 2300 – 2700 / 2900 - 3600	MHz
Frequency (Beidou, GPS, Galileo, Glonass)	1561.098 ± 2.046/ 1575.42 ± 1.023/ 1602.5625 ± 4	MHz
Nominal Impedance	50	Ω
VSWR (LTE)	< 1.5	
Gain* (LTE antenna, < 2170 MHz)	6	dBi ± 1 dB
Gain* (LTE antenna, > 2170 MHz)	5.5	dBi ± 1 dB
Isolation LTE to LTE**	15 or better	dB
GNSS antenna RHCP gain	1	dBic ± 2dB
LNA gain	30	dB ± 2 dB
Noise Figure	2.5 (cascade)	dB
Current	8	mA ± 2 mA
V <sub>dc</sub>	3-5	V <sub>dc</sub>
LNA and filter attenuation		
	@ 824 MHz	70 dB
	@ 960 MHz	65 dB
	@ 1710 MHz	60 dB
	@ 2170 MHz	65 dB
Connector type	SMA	
Cable type(s)	RG-58 (LTE) / RG-174 (GPS)	
Length	17	Feet

\*Measured on 2ft GND plane and with 4 inch cables

\*\*In free space with 17ft cables

**Description: MiMo LTE, GNSS Vehicle Mount  
Antenna**

**Series: Panther**

**PART NUMBER: GPSMB301, GPSMB302, GPSMB301R,  
GPSMB302R**

**MECHANICAL SPECIFICATIONS**

Plastic radome for GPSMB301/GPSMB302	ABS/PC Material UV Stabilized, UL-94HB
for GPSMB301R/GPSMB302R	PC material, EN45545 R6 HL3 compliant
Color	Black, White
Ingress Protection	IP67
Weight	~940 g
Mounting	Direct or Magnetic options

**ENVIRONMENTAL SPECIFICATIONS**

Operating temperature	-40-+85° C
Humidity	95%RH @ +25°C for 12h and 55°C for 12h
Vibration	MIL-STD 810G, section 514.6 , 5-500 Hz, 60min/axis
Thermal Shocks	MIL-STD 810G, section 503.5, -40 to +85°C, 3 cycles
Drop Test	Minimum of one drop per axis – 4, 1 meter drops

**Description: MiMo LTE, GNSS Vehicle Mount Antenna**

**Series: Panther**

**PART NUMBER: GPSMB301, GPSMB302, GPSMB301R, GPSMB302R**

**Tests for railroad certification per EN50155, EN61373, EN45545-2**

NO	T SN IN STAND	TEST DESCRIPTION	REFER STANDARD	TEST REPORT NO	RESULT(PASS/FAIL)
1	12.2.3	Cooling test	EN 50155	DD20170919002	PASS
2	12.2.4	Dry heat test			
3	12.2.5	Damp heat test, cyclic			
4	12.2.6	Supply overvoltages	EN 50155	W01714200900E	PASS
5	12.2.7	Surges, electrostatic discharge and transient burst susceptibility tests	EN 50155	E1710056-01E	PASS
6	12.2.8	Radio interference			
7	12.2.9	Insulation test	EN 50155	E17110014-01E	PASS
8	12.2.10	Salt mist test	EN 50155	DD20170919002	PASS
9	12.2.11	Vibration	EN 61373		
		Shock, and bump test	EN 61373		
10	12.2.12	Watertightness test	EN 50155		
11	12.2.14	Low temperature storage test	EN 50155	TC 18 02 000528	HL1&HL2
12	/	fire & smoke	EN 45545-2 R15&R16		
			EN 45545-2 R15&R16	TC.18.04.001633	HL1&HL2&HL3

Issue: 1823

In the effort to improve our products, we reserve the right to make changes judged to be necessary.

CONFIDENTIAL AND PROPRIETARY INFORMATION

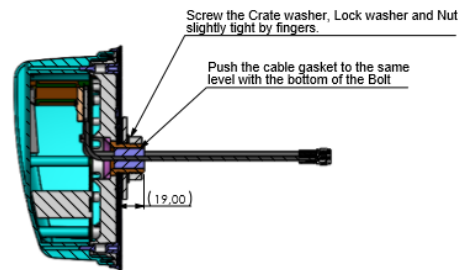
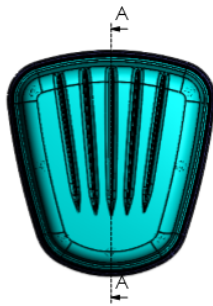
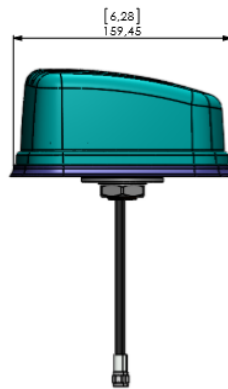
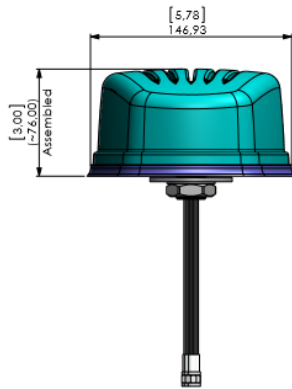
This document contains confidential and proprietary information of Pulse Electronics, Inc. (Pulse) and is protected by copyright, trade secret and other state and federal laws. Its receipt or possession does not convey any rights to reproduce, disclose its contents, or to manufacture, use or sell anything it may describe. Reproduction, disclosure or use without specific written authorization of Pulse is strictly forbidden.

# Description: MiMo LTE, GNSS Vehicle Mount Antenna

Series: Panther

PART NUMBER: GPSMB301, GPSMB302, GPSMB301R, GPSMB302R

## MECHANICAL DRAWING



SECTION A-A

Tolerances of linear dimensions (MEDIUM ISO 2768-m)	
Dimension	Tolerance
0.5 - 3	±0.1
3 - 6	±0.1
6 - 30	±0.2
30 - 120	±0.3
120 - 400	±0.5
400 - 1000	±0.8
1000 - 2000	±1.2
2000 - 4000	±2

For more details see ISO 2768-m  
Tolerances apply to the  
finished product only.

Tolerances of angular dimensions (MEDIUM ISO 2768-m)	
Dimension of chamfer side (millimeter)	Tolerance
up to 10	±1°
10 - 30	±0°30'
30 - 120	±0°20'
120 - 400	±0°15'
over 400	±0°12'

Tolerances of radii and chamfers (MEDIUM ISO 2768-m)	
Radius, chamfer height	Tolerance
0.5 - 3	±0.2
3 - 6	±0.5
over 6	±1

For more details see ISO 2768-m  
Tolerances apply to the  
finished product only.

No riveting craters allowed to use.

Functional Characteristics only:  
Process capability studies required, total 0 pcs.  
Process capability studies required and ongoing statistical process control required, total 0 pcs.

Please follow Pulse limits of hazardous substances (RoHS, halogens) in the document Pulse Hazardous Substances (HS) Limits and Vendor Supply Qualification Material Composition (QCM-344-0002).

Matr.	Application
P01	Cable Tie around GPS updated.
A	A-Release.

**Pulse** Pulse Finland Oy  
Pulse & P0600 Composite Finland  
Tel: +358 207 735 600  
Fax: +358 207 735 201  
www.pulseelectronics.com/antennas

Product: GPSMB301  
Item Name: Antenna Assembly

Sheet number:	2/2
General tolerance:	
Customer number:	
Date:	12.03.2015
Drawn:	
Check:	
Appr:	
Scale:	1:2 (A2)
Document number:	GPSMB301
Part Version:	
Document Version:	A
Rev. No.	18.09.2015
Rev. No.	07.07.2015
Rev. No.	
Rev. No.	

Issue: 1823

In the effort to improve our products, we reserve the right to make changes judged to be necessary.

CONFIDENTIAL AND PROPRIETARY INFORMATION

This document contains confidential and proprietary information of Pulse Electronics, Inc. (Pulse) and is protected by copyright, trade secret and other state and federal laws. Its receipt or possession does not convey any rights to reproduce, disclose its contents, or to manufacture, use or sell anything it may describe. Reproduction, disclosure or use without specific written authorization of Pulse is strictly forbidden.



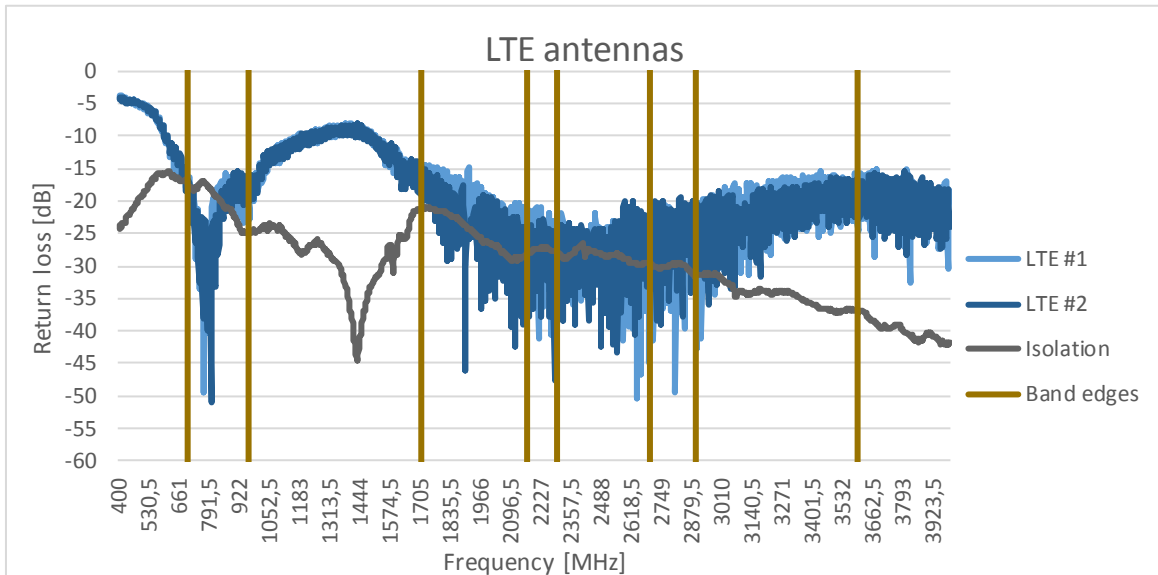
**Description: MiMo LTE, GNSS Vehicle Mount Antenna**

**Series: Panther**

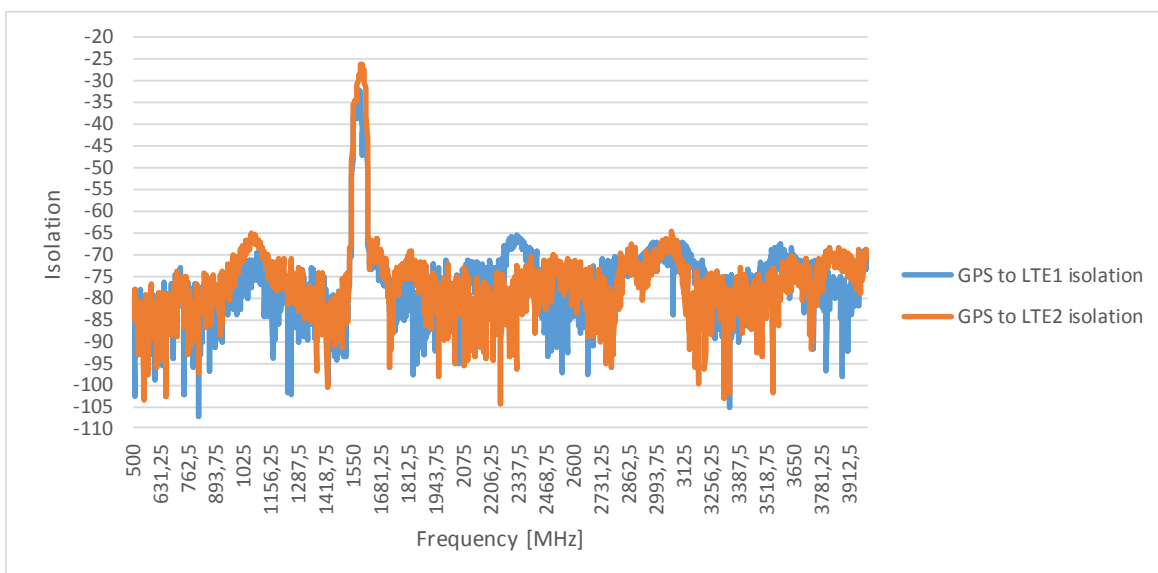
**PART NUMBER: GPSMB301, GPSMB302, GPSMB301R, GPSMB302R**

**CHARTS**

Return loss and isolation in free space, LTE antennas\*\*



GNSS isolation to LTE 1 and LTE 2 antenna\*



Issue: 1823

In the effort to improve our products, we reserve the right to make changes judged to be necessary.

CONFIDENTIAL AND PROPRIETARY INFORMATION

This document contains confidential and proprietary information of Pulse Electronics, Inc. (Pulse) and is protected by copyright, trade secret and other state and federal laws. Its receipt or possession does not convey any rights to reproduce, disclose its contents, or to manufacture, use or sell anything it may describe. Reproduction, disclosure or use without specific written authorization of Pulse is strictly forbidden.

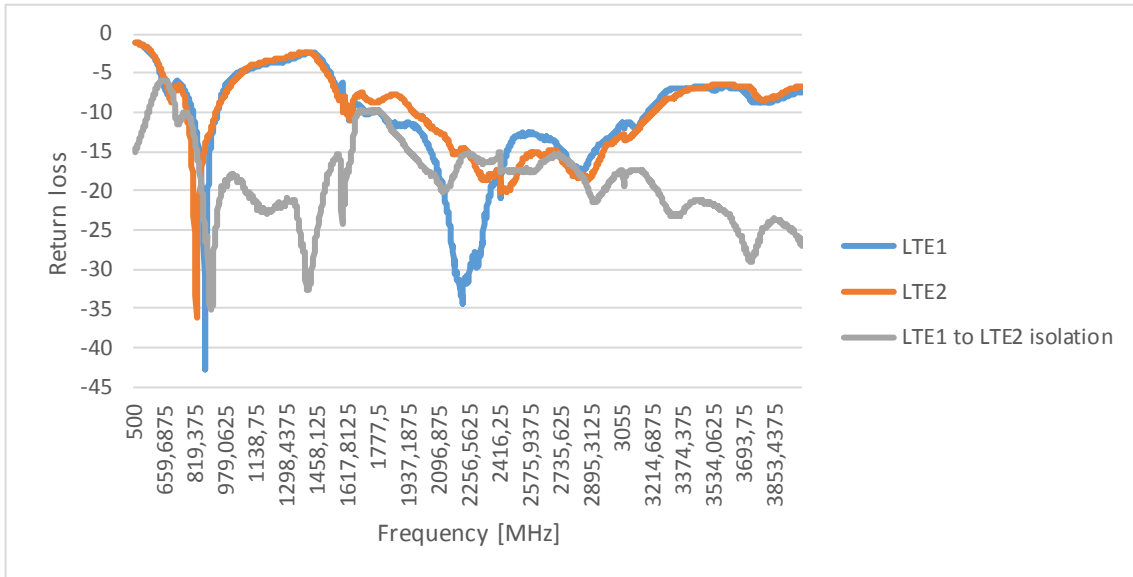
**Description: MiMo LTE, GNSS Vehicle Mount Antenna**

**Series: Panther**

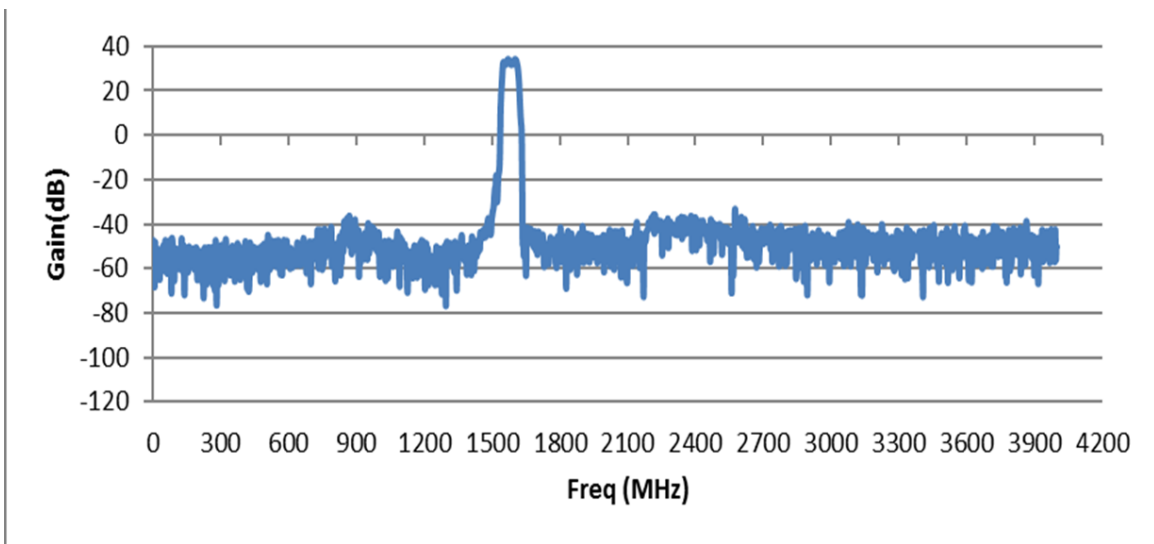
**PART NUMBER: GPSMB301, GPSMB302, GPSMB301R, GPSMB302R**

**CHARTS**

Return loss and isolation, LTE antennas\*



GNSS LNA performance



Issue: 1823

In the effort to improve our products, we reserve the right to make changes judged to be necessary.

CONFIDENTIAL AND PROPRIETARY INFORMATION

This document contains confidential and proprietary information of Pulse Electronics, Inc. (Pulse) and is protected by copyright, trade secret and other state and federal laws. Its receipt or possession does not convey any rights to reproduce, disclose its contents, or to manufacture, use or sell anything it may describe. Reproduction, disclosure or use without specific written authorization of Pulse is strictly forbidden.



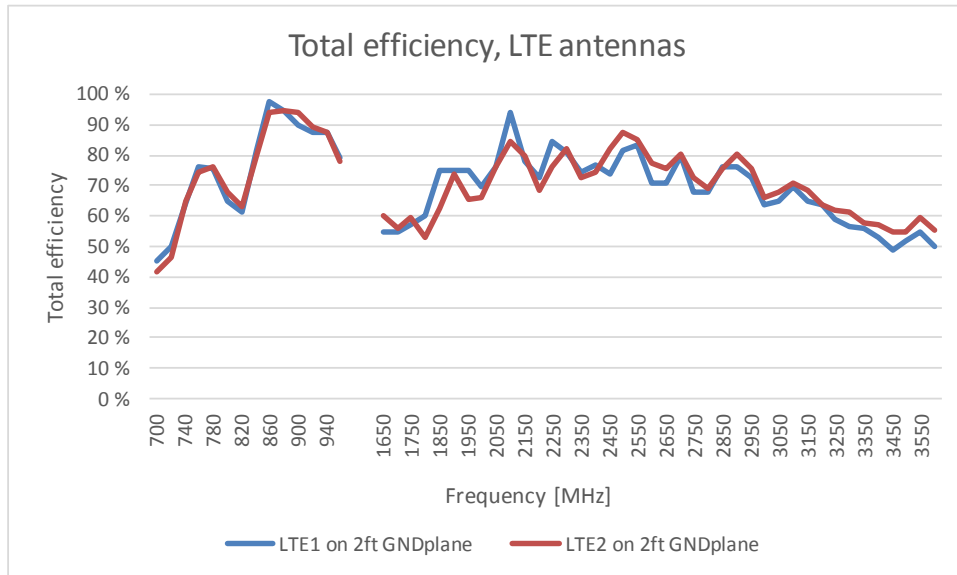
**Description: MiMo LTE, GNSS Vehicle Mount Antenna**

**Series: Panther**

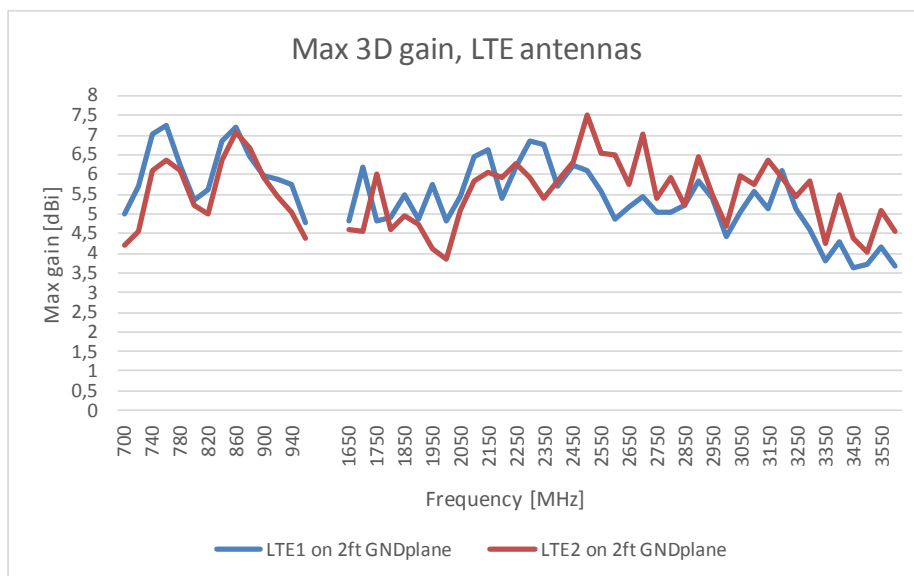
**PART NUMBER: GPSMB301, GPSMB302, GPSMB301R, GPSMB302R**

**CHARTS**

LTE antenna total efficiency with 2ft metal plate and 4 inch cables



Maximum 3D gain, LTE antenna with 2ft metal plate and 4inch cables



Issue: 1823

In the effort to improve our products, we reserve the right to make changes judged to be necessary.

CONFIDENTIAL AND PROPRIETARY INFORMATION

This document contains confidential and proprietary information of Pulse Electronics, Inc. (Pulse) and is protected by copyright, trade secret and other state and federal laws. Its receipt or possession does not convey any rights to reproduce, disclose its contents, or to manufacture, use or sell anything it may describe. Reproduction, disclosure or use without specific written authorization of Pulse is strictly forbidden.

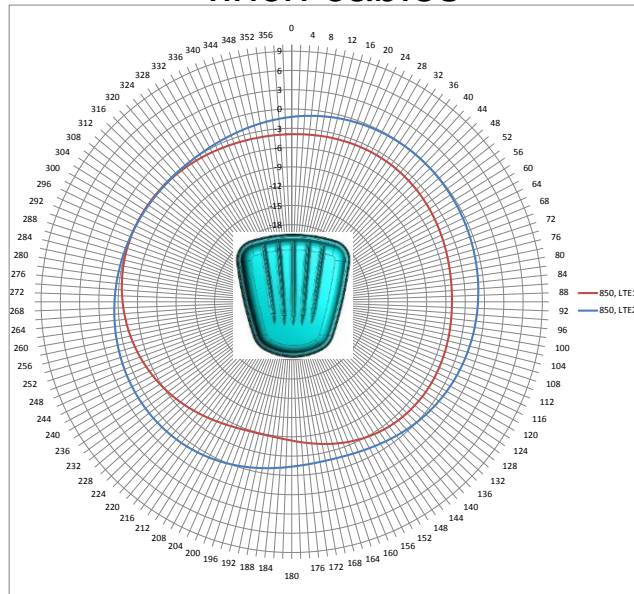
**Description: MiMo LTE, GNSS Vehicle Mount  
Antenna**

**Series: Panther**

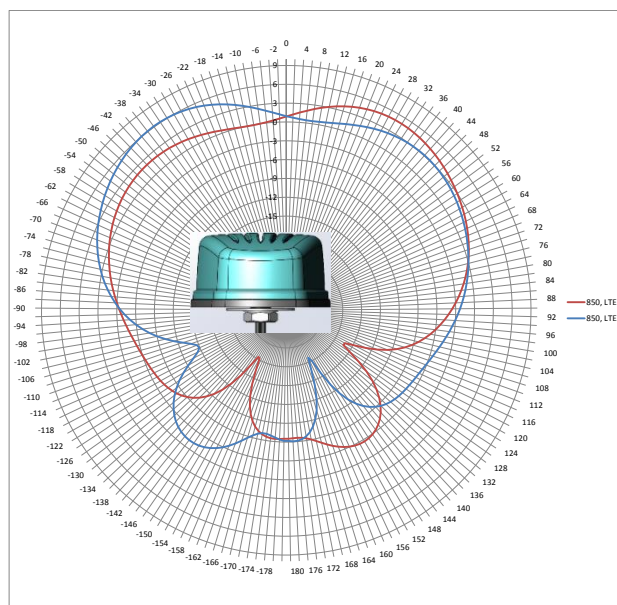
**PART NUMBER: GPSMB301, GPSMB302, GPSMB301R,  
GPSMB302R**

**CHARTS**

LTE antenna radiation pattern at 850MHz with 2ft metal plate and 4inch cables



**Horizontal plot**



**Vertical plot front view**

Issue: 1823

In the effort to improve our products, we reserve the right to make changes judged to be necessary.

CONFIDENTIAL AND PROPRIETARY INFORMATION

This document contains confidential and proprietary information of Pulse Electronics, Inc. (Pulse) and is protected by copyright, trade secret and other state and federal laws. Its receipt or possession does not convey any rights to reproduce, disclose its contents, or to manufacture, use or sell anything it may describe. Reproduction, disclosure or use without specific written authorization of Pulse is strictly forbidden.

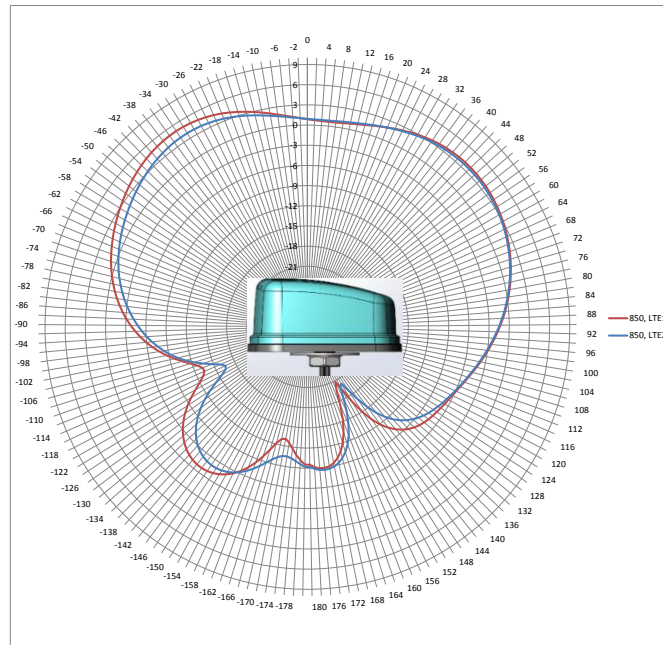
**Description: MiMo LTE, GNSS Vehicle Mount  
Antenna**

**Series: Panther**

**PART NUMBER: GPSMB301, GPSMB302, GPSMB301R,  
GPSMB302R**

**CHARTS**

LTE antenna radiation pattern at 850MHz with 2ft metal plate and 4inch cables



Vertical plot side view

Issue: 1823

In the effort to improve our products, we reserve the right to make changes judged to be necessary.

CONFIDENTIAL AND PROPRIETARY INFORMATION

This document contains confidential and proprietary information of Pulse Electronics, Inc. (Pulse) and is protected by copyright, trade secret and other state and federal laws. Its receipt or possession does not convey any rights to reproduce, disclose its contents, or to manufacture, use or sell anything it may describe. Reproduction, disclosure or use without specific written authorization of Pulse is strictly forbidden.

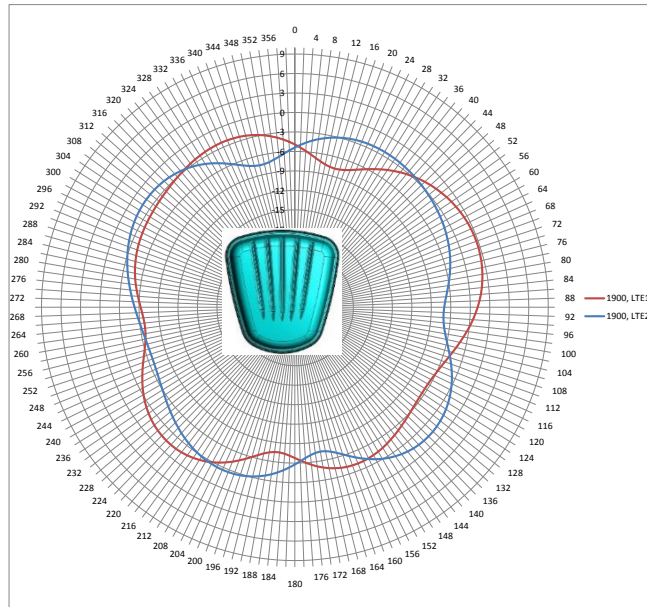
**Description: MiMo LTE, GNSS Vehicle Mount Antenna**

**Series: Panther**

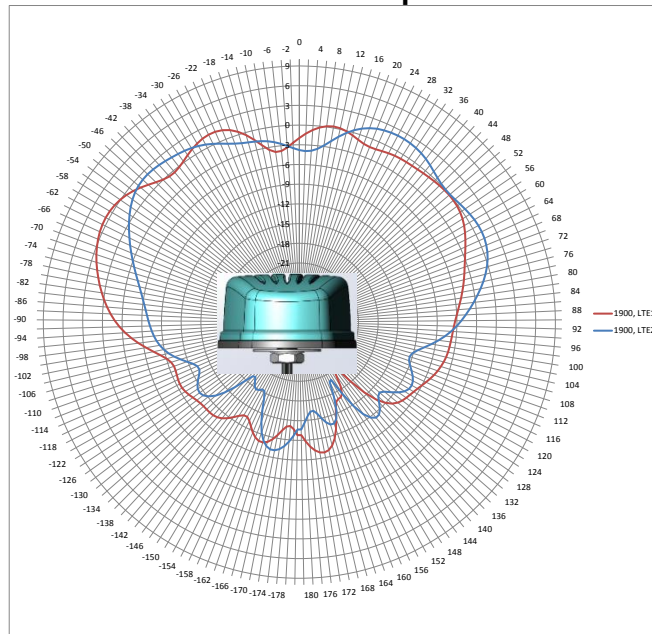
**PART NUMBER: GPSMB301, GPSMB302, GPSMB301R, GPSMB302R**

**CHARTS**

LTE antenna radiation pattern at 1900MHz with 2ft metal plate and 4inch cables



Horizontal plot



Vertical plot front view

Issue: 1823

In the effort to improve our products, we reserve the right to make changes judged to be necessary.

CONFIDENTIAL AND PROPRIETARY INFORMATION

This document contains confidential and proprietary information of Pulse Electronics, Inc. (Pulse) and is protected by copyright, trade secret and other state and federal laws. Its receipt or possession does not convey any rights to reproduce, disclose its contents, or to manufacture, use or sell anything it may describe. Reproduction, disclosure or use without specific written authorization of Pulse is strictly forbidden.

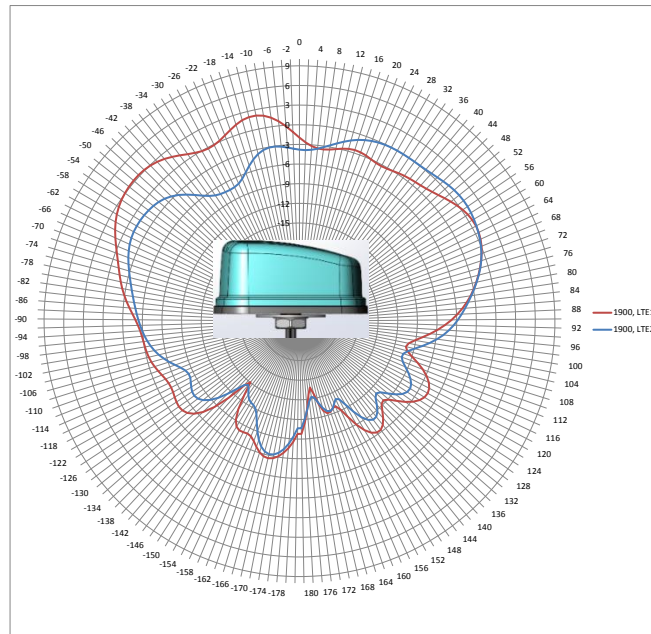
**Description: MiMo LTE, GNSS Vehicle Mount  
Antenna**

**Series: Panther**

**PART NUMBER: GPSMB301, GPSMB302, GPSMB301R,  
GPSMB302R**

**CHARTS**

**LTE antenna radiation pattern at 1900MHz with 2ft metal plate and  
4inch cables**



**Vertical plot side view**

Issue: 1823

In the effort to improve our products, we reserve the right to make changes judged to be necessary.

CONFIDENTIAL AND PROPRIETARY INFORMATION

This document contains confidential and proprietary information of Pulse Electronics, Inc. (Pulse) and is protected by copyright, trade secret and other state and federal laws. Its receipt or possession does not convey any rights to reproduce, disclose its contents, or to manufacture, use or sell anything it may describe. Reproduction, disclosure or use without specific written authorization of Pulse is strictly forbidden.

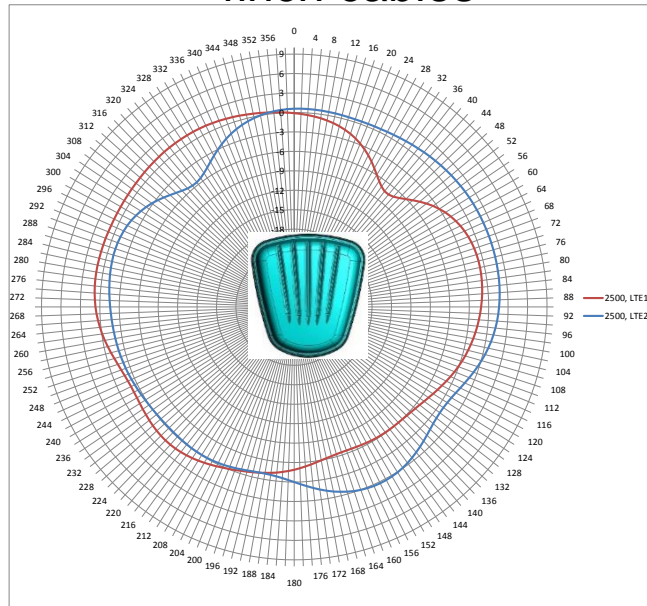
**Description: MiMo LTE, GNSS Vehicle Mount Antenna**

**Series: Panther**

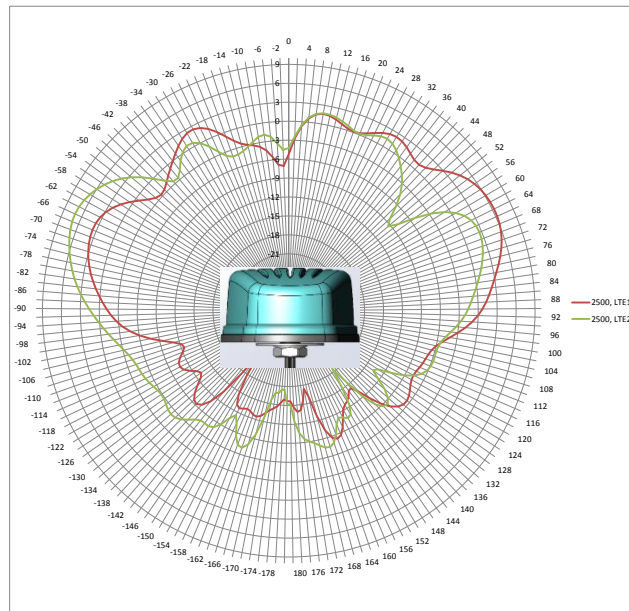
**PART NUMBER: GPSMB301, GPSMB302, GPSMB301R, GPSMB302R**

**CHARTS**

LTE antenna radiation pattern at 2500MHz with 2ft metal plate and 4inch cables



Horizontal plot



Vertical plot front view

Issue: 1823

In the effort to improve our products, we reserve the right to make changes judged to be necessary.

CONFIDENTIAL AND PROPRIETARY INFORMATION

This document contains confidential and proprietary information of Pulse Electronics, Inc. (Pulse) and is protected by copyright, trade secret and other state and federal laws. Its receipt or possession does not convey any rights to reproduce, disclose its contents, or to manufacture, use or sell anything it may describe. Reproduction, disclosure or use without specific written authorization of Pulse is strictly forbidden.

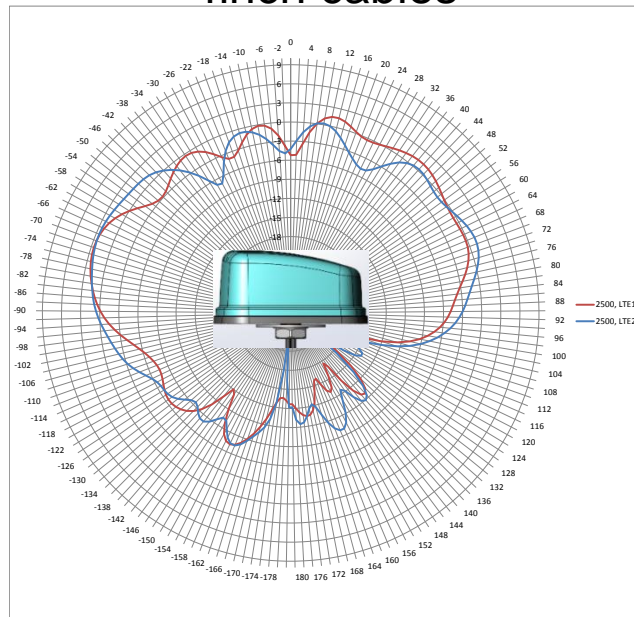
**Description: MiMo LTE, GNSS Vehicle Mount  
Antenna**

**Series: Panther**

**PART NUMBER: GPSMB301, GPSMB302, GPSMB301R,  
GPSMB302R**

**CHARTS**

LTE antenna radiation pattern at 2500MHz with 2ft metal plate and 4inch cables



Vertical plot side view

Issue: 1823

In the effort to improve our products, we reserve the right to make changes judged to be necessary.

CONFIDENTIAL AND PROPRIETARY INFORMATION

This document contains confidential and proprietary information of Pulse Electronics, Inc. (Pulse) and is protected by copyright, trade secret and other state and federal laws. Its receipt or possession does not convey any rights to reproduce, disclose its contents, or to manufacture, use or sell anything it may describe. Reproduction, disclosure or use without specific written authorization of Pulse is strictly forbidden.

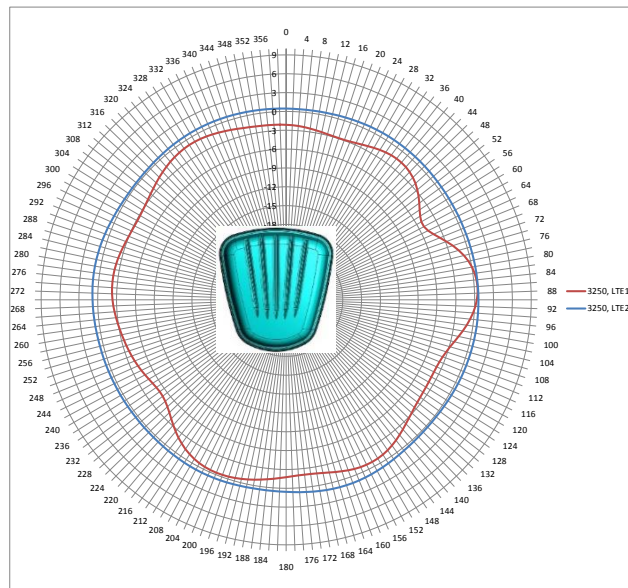
**Description: MiMo LTE, GNSS Vehicle Mount  
Antenna**

**Series: Panther**

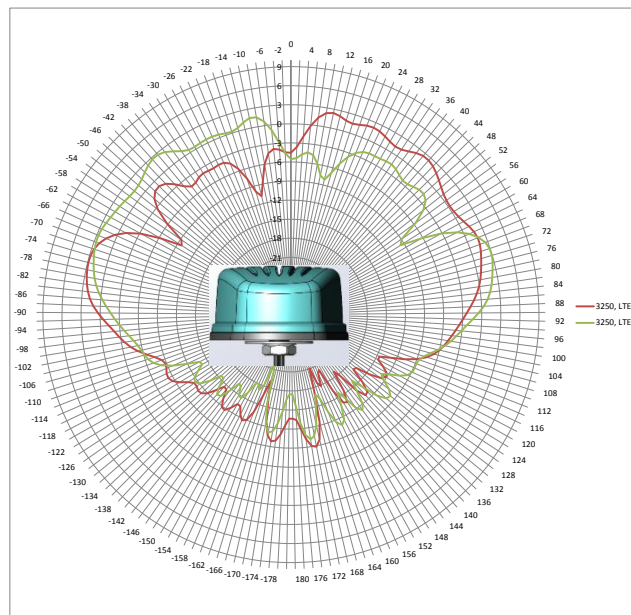
**PART NUMBER: GPSMB301, GPSMB302, GPSMB301R,  
GPSMB302R**

**CHARTS**

LTE antenna radiation pattern at 3250MHz with 2ft metal plate and 4inch cables



**Horizontal plot**



**Vertical plot front view**

Issue: 1823

In the effort to improve our products, we reserve the right to make changes judged to be necessary.

CONFIDENTIAL AND PROPRIETARY INFORMATION

This document contains confidential and proprietary information of Pulse Electronics, Inc. (Pulse) and is protected by copyright, trade secret and other state and federal laws. Its receipt or possession does not convey any rights to reproduce, disclose its contents, or to manufacture, use or sell anything it may describe. Reproduction, disclosure or use without specific written authorization of Pulse is strictly forbidden.



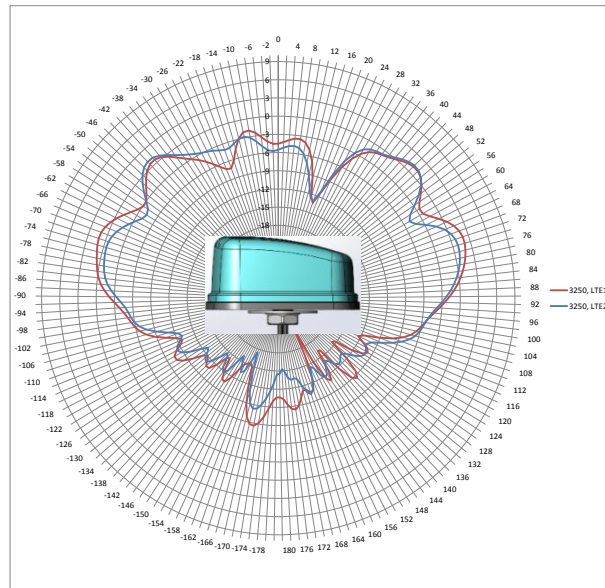
**Description: MiMo LTE, GNSS Vehicle Mount  
Antenna**

**Series: Panther**

**PART NUMBER: GPSMB301, GPSMB302, GPSMB301R,  
GPSMB302R**

**CHARTS**

LTE antenna radiation pattern at 3250MHz with 2ft metal plate and 4inch cables



Vertical plot side view

Issue: 1823

In the effort to improve our products, we reserve the right to make changes judged to be necessary.

CONFIDENTIAL AND PROPRIETARY INFORMATION

This document contains confidential and proprietary information of Pulse Electronics, Inc. (Pulse) and is protected by copyright, trade secret and other state and federal laws. Its receipt or possession does not convey any rights to reproduce, disclose its contents, or to manufacture, use or sell anything it may describe. Reproduction, disclosure or use without specific written authorization of Pulse is strictly forbidden.

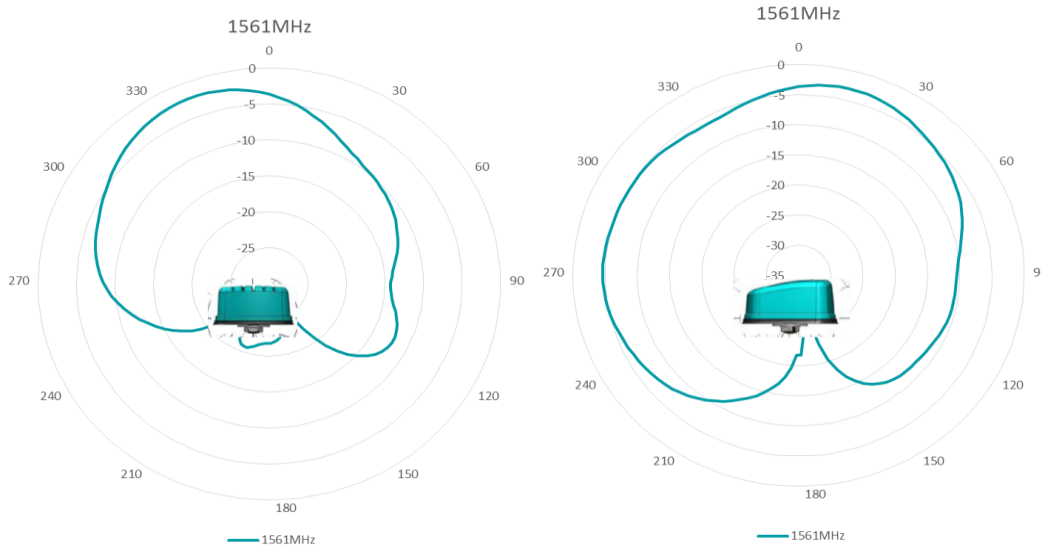
**Description: MiMo LTE, GNSS Vehicle Mount Antenna**

**Series: Panther**

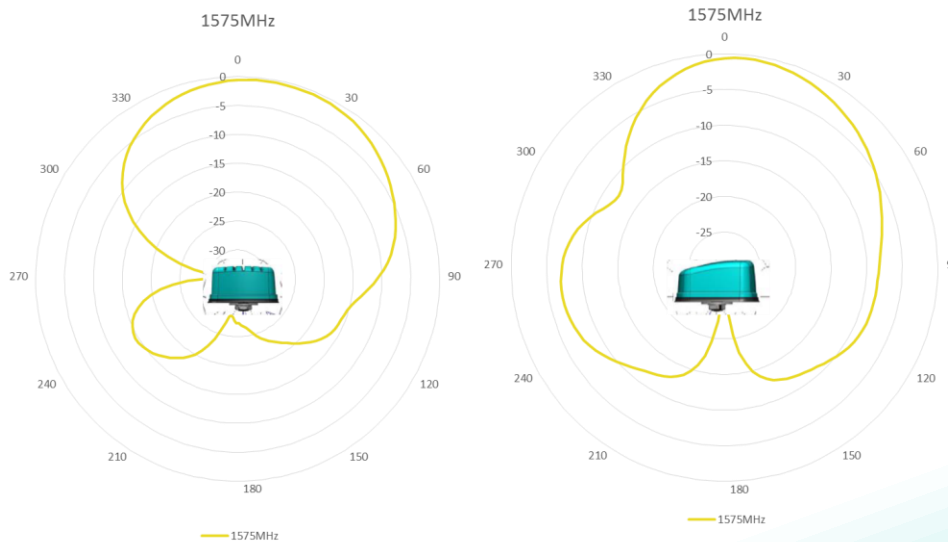
**PART NUMBER: GPSMB301, GPSMB302, GPSMB301R, GPSMB302R**

**CHARTS**

**BD2 RHCP patterns, measured with 4inch cables in free space**



**GPS & Galileo RHCP patterns, measured with 4inch cables in free space**



Issue: 1823

In the effort to improve our products, we reserve the right to make changes judged to be necessary.

CONFIDENTIAL AND PROPRIETARY INFORMATION

This document contains confidential and proprietary information of Pulse Electronics, Inc. (Pulse) and is protected by copyright, trade secret and other state and federal laws. Its receipt or possession does not convey any rights to reproduce, disclose its contents, or to manufacture, use or sell anything it may describe. Reproduction, disclosure or use without specific written authorization of Pulse is strictly forbidden.

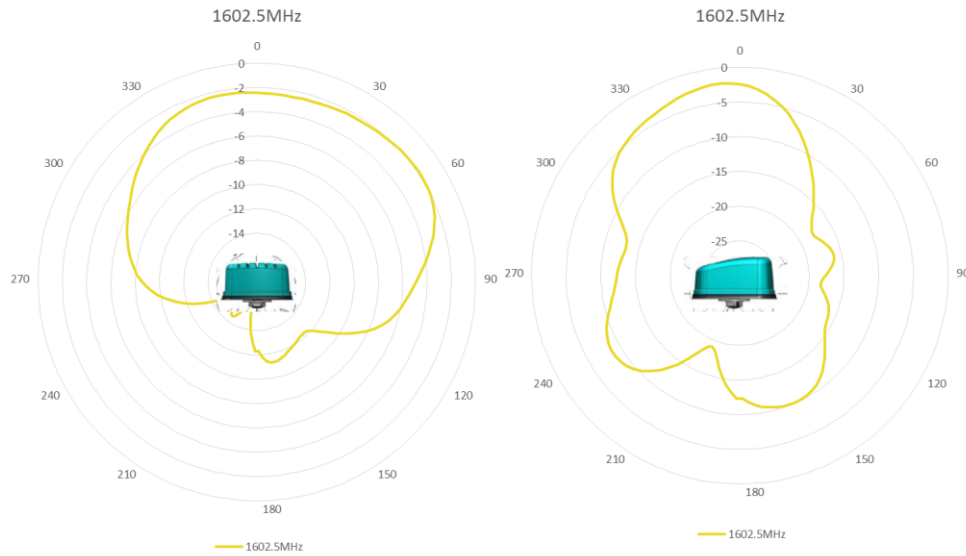
**Description: MiMo LTE, GNSS Vehicle Mount Antenna**

**Series: Panther**

**PART NUMBER: GPSMB301, GPSMB302, GPSMB301R, GPSMB302R**

**CHARTS**

GLONASS RHCP patterns, measured with 4inch cables in free space



Issue: 1823

In the effort to improve our products, we reserve the right to make changes judged to be necessary.

CONFIDENTIAL AND PROPRIETARY INFORMATION

This document contains confidential and proprietary information of Pulse Electronics, Inc. (Pulse) and is protected by copyright, trade secret and other state and federal laws. Its receipt or possession does not convey any rights to reproduce, disclose its contents, or to manufacture, use or sell anything it may describe. Reproduction, disclosure or use without specific written authorization of Pulse is strictly forbidden.

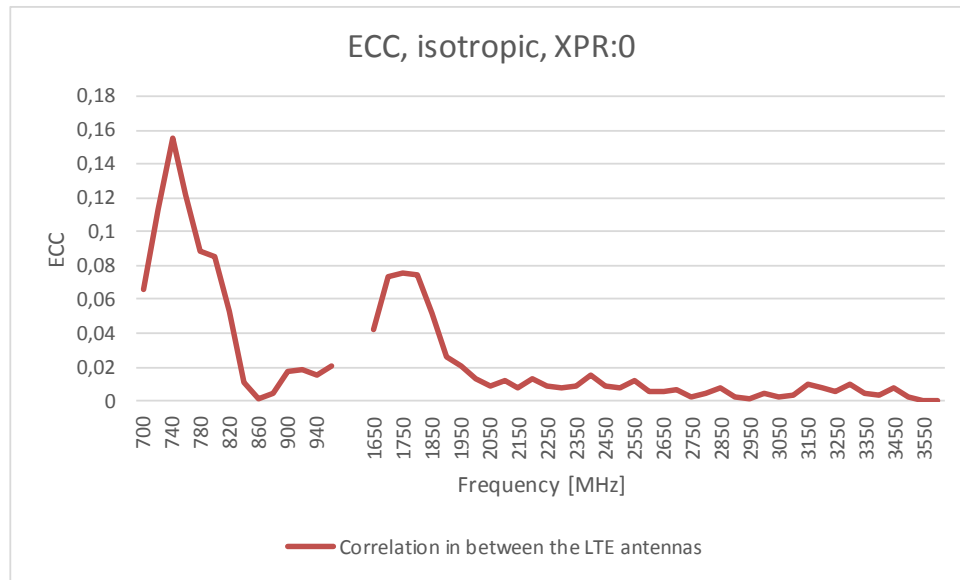
**Description: MiMo LTE, GNSS Vehicle Mount Antenna**

**Series: Panther**

**PART NUMBER: GPSMB301, GPSMB302, GPSMB301R, GPSMB302R**

**CHARTS**

**Envelope correlation coefficient - LTE 1 to LTE 2**



Issue: 1823

In the effort to improve our products, we reserve the right to make changes judged to be necessary.

CONFIDENTIAL AND PROPRIETARY INFORMATION

This document contains confidential and proprietary information of Pulse Electronics, Inc. (Pulse) and is protected by copyright, trade secret and other state and federal laws. Its receipt or possession does not convey any rights to reproduce, disclose its contents, or to manufacture, use or sell anything it may describe. Reproduction, disclosure or use without specific written authorization of Pulse is strictly forbidden.

**Description: MiMo LTE, GNSS Vehicle Mount  
Antenna**

**Series: Panther**

**PART NUMBER: GPSMB301, GPSMB302, GPSMB301R,  
GPSMB302R**

## PACKAGING

One antenna pack in one PE bag, 6 antennae in one box

## Данный компонент на территории Российской Федерации

### Вы можете приобрести в компании MosChip.

Для оперативного оформления запроса Вам необходимо перейти по данной ссылке:

<http://moschip.ru/get-element>

Вы можете разместить у нас заказ для любого Вашего проекта, будь то серийное производство или разработка единичного прибора.

В нашем ассортименте представлены ведущие мировые производители активных и пассивных электронных компонентов.

Нашей специализацией является поставка электронной компонентной базы двойного назначения, продукции таких производителей как XILINX, Intel (ex.ALTERA), Vicor, Microchip, Texas Instruments, Analog Devices, Mini-Circuits, Amphenol, Glenair.

Сотрудничество с глобальными дистрибьюторами электронных компонентов, предоставляет возможность заказывать и получать с международных складов практически любой перечень компонентов в оптимальные для Вас сроки.

На всех этапах разработки и производства наши партнеры могут получить квалифицированную поддержку опытных инженеров.

Система менеджмента качества компании отвечает требованиям в соответствии с ГОСТ Р ИСО 9001, ГОСТ РВ 0015-002 и ЭС РД 009

### Офис по работе с юридическими лицами:

105318, г.Москва, ул.Щербаковская д.3, офис 1107, 1118, ДЦ «Щербаковский»

Телефон: +7 495 668-12-70 (многоканальный)

Факс: +7 495 668-12-70 (доб.304)

E-mail: [info@moschip.ru](mailto:info@moschip.ru)

Skype отдела продаж:

moschip.ru

moschip.ru\_4

moschip.ru\_6

moschip.ru\_9