

PLEASE CHECK WWW.MOLEX.COM FOR LATEST PART INFORMATION

Part Number: [0050291558](#)
Status: **Active**
Overview: [kk](#)
Description: 2.54mm (.100") Pitch KK® Crimp Terminal Housing, Friction Ramp, 3 Circuits,

Documents:

[3D Model](#) [Product Specification PS-10-07 \(PDF\)](#)
[Drawing \(PDF\)](#) [RoHS Certificate of Compliance \(PDF\)](#)

Agency Certification

CSA LR19980
 UL E29179

General

Product Family Crimp Housings
 Series [2695](#)
 Overview [kk](#)
 Product Name KK®

Physical

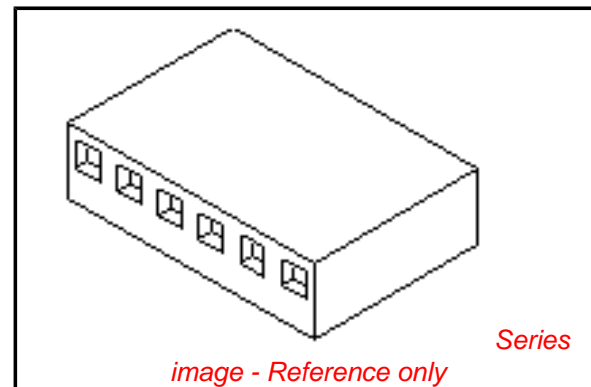
Circuits (maximum) 3
 Color - Resin Brown, Natural (White)
 Flammability 94V-0
 Gender Plug
 Glow-Wire Compliant No
 Lock to Mating Part Yes
 Material - Resin Nylon
 Number of Rows 1
 Packaging Type Bag
 Panel Mount No
 Pitch - Mating Interface (in) 0.100 In
 Pitch - Mating Interface (mm) 2.54 mm
 Pitch - Term. Interface (in) 0.100 In
 Pitch - Term. Interface (mm) 2.54 mm
 Polarized to Mating Part Yes
 Stackable No
 Temperature Range - Operating 0°C to +75°C

Material Info

Old Part Number 2695-3RP-BK

Reference - Drawing Numbers

Product Specification PS-10-07
 Sales Drawing SD-2695



EU RoHS

**ELV and RoHS
 Compliant**
**REACH SVHC
 Contains SVHC: No**
**Halogen-Free
 Status**

China RoHS



Halogen-Free

**Need more information on product
 environmental compliance?**

Email productcompliance@molex.com
 For a multiple part number RoHS Certificate of
 Compliance, [click here](#)

Please visit the [Contact Us](#) section for any
 non-product compliance questions.

Search Parts in this Series

[2695Series](#)

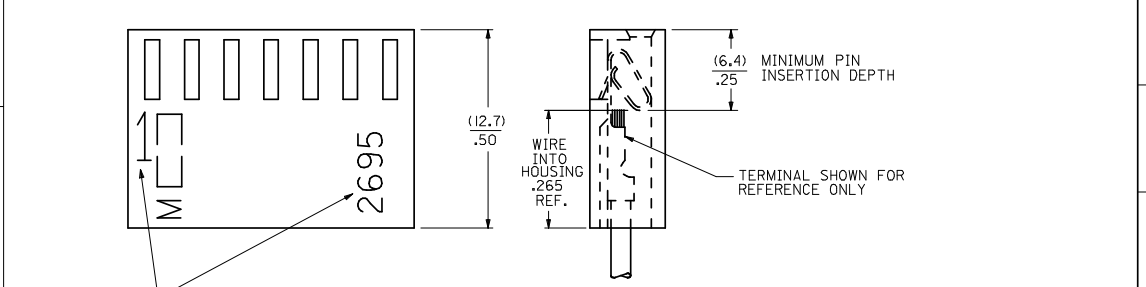
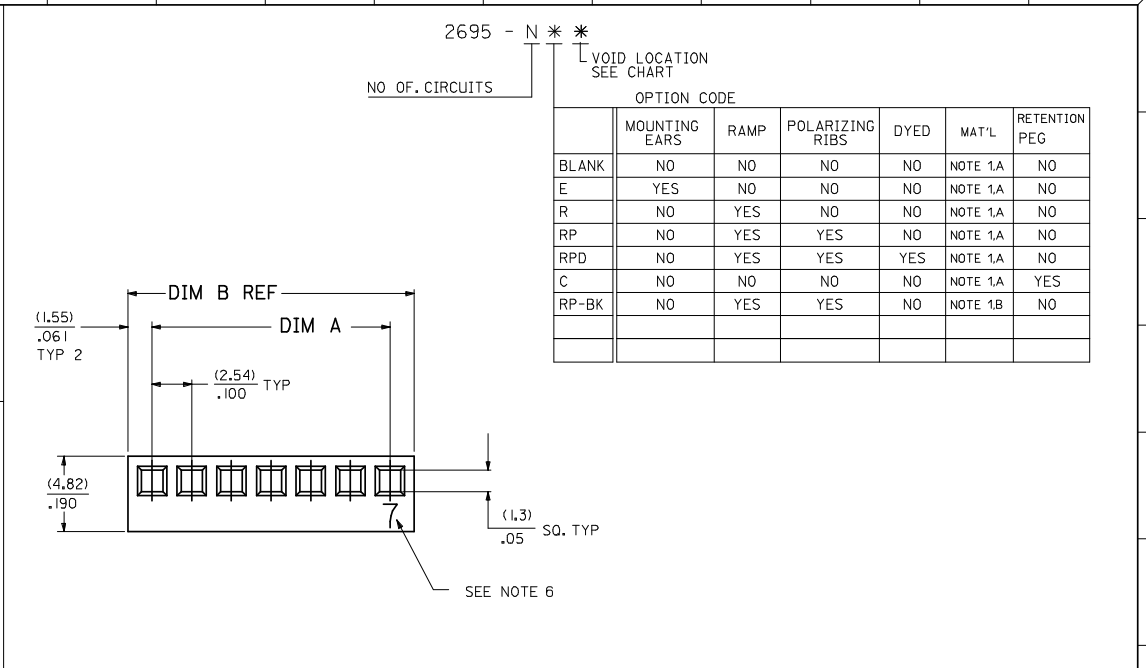
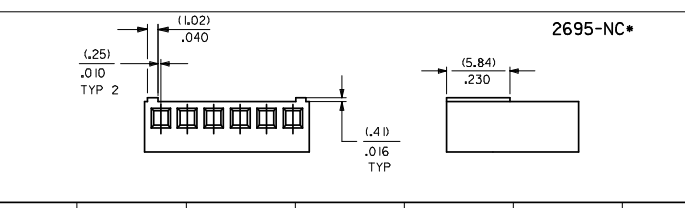
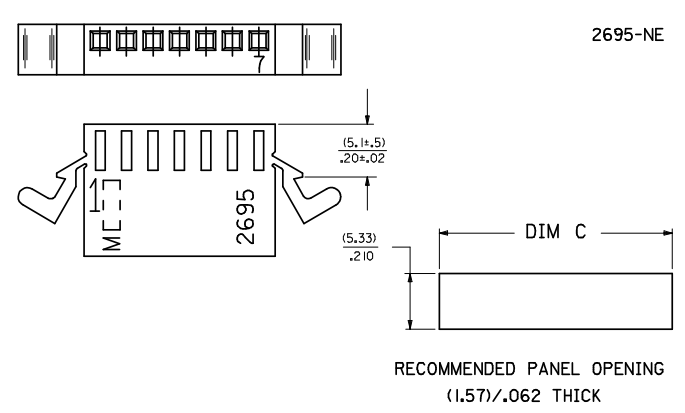
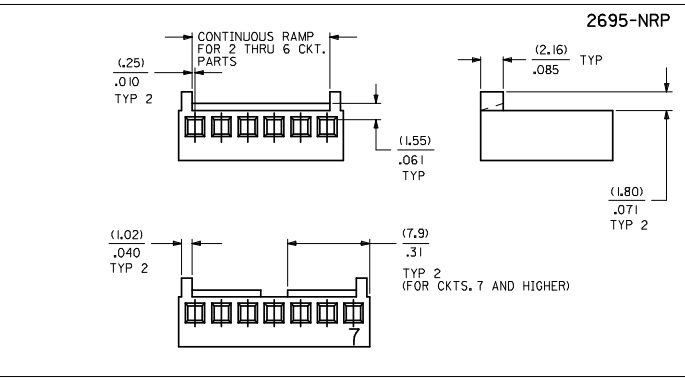
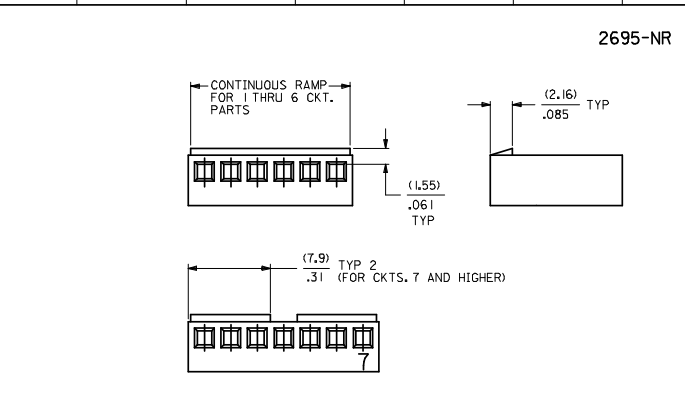
Mates With

2.54mm (.100") Pitch KK® PCB Headers
[42375](#) , [42377](#) , [42376](#) , [4030](#) , [6373](#) , [6410](#)

Use With

KK® Crimp Terminal [2759](#) , [6459](#) , [41572](#)

NO. OF CKT'S.	DIM. A	DIM. B	DIM. C
1	N/A	(3.10) .122	(7.16) .282
2	(2.54+.05) .100+.002	(5.64) .222	(9.70) .382
3	(5.08+.05) .200+.002	(8.18) .322	(12.24) .482
4	(7.62+.05) .300+.002	(10.72) .422	(14.78) .582
5	(10.16+.05) .400+.002	(13.26) .522	(17.32) .682
6	(12.70+.08) .500+.003	(15.80) .622	(19.86) .782
7	(15.24+.08) .600+.003	(18.34) .722	(22.40) .882
8	(17.78+.08) .700+.003	(20.88) .822	(24.94) .982
9	(20.32+.10) .800+.004	(23.42) .922	(27.48) 1.082
10	(22.86+.10) .900+.004	(25.96) 1.022	(30.02) 1.182
11	(25.4+.10) 1.000+.004	(28.50) 1.122	(32.56) 1.282
12	(27.94+.13) 1.100+.005	(31.04) 1.222	(35.10) 1.382
13	(30.48+.13) 1.200+.005	(33.58) 1.322	(37.64) 1.482
14	(33.02+.13) 1.300+.005	(36.12) 1.422	(40.18) 1.582
15	(35.56+.13) 1.400+.005	(38.66) 1.522	(42.72) 1.682
16	(38.10+.15) 1.500+.006	(41.20) 1.622	(45.26) 1.782
17	(40.64+.15) 1.600+.006	(43.74) 1.722	(47.80) 1.882
18	(43.18+.15) 1.700+.006	(46.28) 1.822	(50.34) 1.982
19	(45.72+.15) 1.800+.006	(48.82) 1.922	(52.88) 2.082
20	(48.26+.15) 1.900+.006	(51.36) 2.022	(55.42) 2.182
21	(50.80+.18) 2.000+.007	(53.90) 2.122	(57.96) 2.282
22	(53.34+.18) 2.100+.007	(56.44) 2.222	(60.50) 2.382
23	(55.88+.18) 2.200+.007	(58.98) 2.322	(63.04) 2.482
24	(58.42+.18) 2.300+.007	(61.52) 2.422	(65.58) 2.582
25	(60.96+.20) 2.400+.008	(64.06) 2.522	(68.12) 2.682
26	(63.50+.20) 2.500+.008	(66.60) 2.622	(70.66) 2.782
27	(66.04+.20) 2.600+.008	(69.14) 2.722	(73.20) 2.882
28	(68.58+.20) 2.700+.008	(71.68) 2.822	(75.74) 2.982
29	(71.12+.23) 2.800+.009	(74.22) 2.922	(78.28) 3.082
30	(73.66+.23) 2.900+.009	(76.76) 3.022	(80.82) 3.182
31	(76.20+.23) 3.000+.009	(79.30) 3.122	(83.36) 3.282
32	(78.74+.23) 3.100+.009	(81.84) 3.222	(85.90) 3.382
33	(81.28+.25) 3.200+.010	(84.38) 3.322	(88.44) 3.482
34	(83.82+.25) 3.300+.010	(86.92) 3.422	(90.98) 3.582
35	(86.36+.25) 3.400+.010	(89.46) 3.522	(93.52) 3.682
36	(88.90+.25) 3.500+.010	(92.00) 3.622	(96.06) 3.782
37	(91.44+.28) 3.600+.011	(94.54) 3.722	(98.60) 3.882
38	(93.98+.28) 3.700+.011	(97.08) 3.822	(101.14) 3.982
39	(96.52+.28) 3.800+.011	(99.62) 3.922	(103.68) 4.082
40	(99.06+.28) 3.900+.011	(102.16) 4.022	(106.22) 4.182



- NOTES
1. MATERIAL: A - NYLON, UL94V-0, COLOR: WHITE
B - NYLON, UL94V-0, COLOR: BLACK
 2. FINISH: SEE TERMINAL DRAWING
 3. THIS HOUSING CONFORMS TO MOLEX PRODUCT SPECIFICATION PS-10-07.
 4. PACKAGING: N/A
 5. HOUSING TO BE USED WITH CRIMP TYPE TERMINAL NUMBER 2759, 22-30 GAUGE WIRE WITH (.157)/.062 DIAMETER MAXIMUM WIRE INSULATION.
 6. LAST CIRCUIT NUMBER TO BE DESIGNATED ON 7 CKTS. AND HIGHER, EXCEPT WHEN "MXI" APPEARS.
 7. CIRCUIT NUMBER "1" AND ENGINEERING NUMBER TO APPEAR ON PARTS 3 CKTS. AND HIGHER.

3	AM3
2	AM3
1	AM4
SHT.	REV.
	AM4

REVISION SYMBOLS □=0 ▽=0	GENERAL TOLERANCES (UNLESS SPECIFIED) 4 PLACES ± .005 3 PLACES ± .005 2 PLACES ± 0.13 ± .01 1 PLACE ± 0.25 ± .01 ANGULAR ± 1/2°	DIMENSION STYLE MM/IN DRAWN BY PEREZ-ARGUET 1988/02/25 CHECKED BY PATTEL 1988/02/25 APPROVED BY LENZ 1988/02/25	SCALE --- INCH	DESIGN UNITS INCH	THIRD ANGLE PROJECTION	
	MATERIAL NO. SD-2695	TITLE (2.54)/.100 HOUSING FOR KK CRIMP TYPE TERMINALS 2695 SERIES DRAWING	DATE 1988/02/25	MOLEX MOLEX INCORPORATED	SHEET NO. 1 OF 3	
	DRAFT WHERE APPLICABLE MUST REMAIN WITHIN DIMENSIONS	SEE CHART	DOCUMENT NO. SD-2695			
	THIS DRAWING CONTAINS INFORMATION THAT IS PROPRIETARY TO MOLEX INCORPORATED AND SHOULD NOT BE USED WITHOUT WRITTEN PERMISSION					

2695-N			2695-NE			2695-NR			2695-NRP			2695-NRPD			2695-NRP-BK		
PART NO.	ENG NO.	VOID	PART NO.	ENG NO.	VOID	PART NO.	ENG NO.	VOID	PART NO.	ENG NO.	VOID	PART NO.	ENG NO.	VOID	PART NO.	ENG NO.	VOID
22-01-2011	2695-1			2695-1E			2695-1R		N/A	2695-1RP		N/A	2695-1RPD				
22-01-2021	2695-2		22-01-2022	2695-2E		22-01-2027	2695-2R		22-01-3027	2695-2RP			2695-2RPD		50-29-1557	2695-2RP-BK	
22-01-2031	2695-3		22-01-2032	2695-3E		22-01-2037	2695-3R		22-01-3037	2695-3RP			2695-3RPD		50-29-1558	2695-3RP-BK	
22-01-2041	2695-4			2695-4E		22-01-2047	2695-4R		22-01-3047	2695-4RP			2695-4RPD		50-29-1559	2695-4RP-BK	
22-01-2051	2695-5			2695-5E		22-01-2057	2695-5R		22-01-3057	2695-5RP		22-32-2051	2695-5RPD		50-29-1560	2695-5RP-BK	
22-01-2061	2695-6			2695-6E		22-01-2067	2695-6R		22-01-3067	2695-6RP			2695-6RPD		50-29-1561	2695-6RP-BK	
22-01-2071	2695-7		22-01-2072	2695-7E		22-01-2077	2695-7R		22-01-3077	2695-7RP			2695-7RPD		50-29-1562	2695-7RP-BK	
22-01-2081	2695-8			2695-8E		22-01-2087	2695-8R		22-01-3087	2695-8RP			2695-8RPD		50-29-1563	2695-8RP-BK	
22-01-2091	2695-9			2695-9E		22-01-2097	2695-9R		22-01-3097	2695-9RP			2695-9RPD		50-29-1564	2695-9RP-BK	
22-01-2101	2695-10			2695-10E		22-01-2107	2695-10R		22-01-3107	2695-10RP		22-32-2101	2695-10RPD		50-29-1565	2695-10RP-BK	
22-01-2111	2695-11			2695-11E		22-01-2117	2695-11R		22-01-3117	2695-11RP			2695-11RPD		50-29-1566	2695-11RP-BK	
22-01-2121	2695-12			2695-12E		22-01-2127	2695-12R		22-01-3127	2695-12RP			2695-12RPD		50-29-1567	2695-12RP-BK	
22-01-2131	2695-13			2695-13E		22-01-2137	2695-13R		22-01-3137	2695-13RP			2695-13RPD		50-29-1568	2695-13RP-BK	
22-01-2141	2695-14			2695-14E		22-01-2147	2695-14R		22-01-3147	2695-14RP			2695-14RPD		50-29-1569	2695-14RP-BK	
22-01-2151	2695-15			2695-15E		22-01-2157	2695-15R		22-01-3157	2695-15RP			2695-15RPD		50-29-1570	2695-15RP-BK	
22-01-2161	2695-16			2695-16E		22-01-2167	2695-16R		22-01-3167	2695-16RP			2695-16RPD		50-29-1571	2695-16RP-BK	
22-01-2171	2695-17			2695-17E		22-01-2177	2695-17R		22-01-3177	2695-17RP			2695-17RPD		50-29-1572	2695-17RP-BK	
22-01-2181	2695-18			2695-18E		22-01-2187	2695-18R		22-01-3187	2695-18RP			2695-18RPD		50-29-1573	2695-18RP-BK	
22-01-2191	2695-19			2695-19E		22-01-2197	2695-19R		22-01-3197	2695-19RP			2695-19RPD		50-29-1574	2695-19RP-BK	
22-01-2201	2695-20			2695-20E		22-01-2207	2695-20R		22-01-3207	2695-20RP			2695-20RPD		50-29-1575	2695-20RP-BK	
22-01-2211	2695-21			2695-21E		22-01-2217	2695-21R		22-01-3217	2695-21RP			2695-21RPD		50-29-1576	2695-21RP-BK	
22-01-2221	2695-22			2695-22E		22-01-2227	2695-22R		22-01-3227	2695-22RP			2695-22RPD		50-29-1577	2695-22RP-BK	
22-01-2231	2695-23			2695-23E		22-01-2237	2695-23R		22-01-3237	2695-23RP			2695-23RPD		50-29-1578	2695-23RP-BK	
22-01-2241	2695-24			2695-24E		22-01-2247	2695-24R		22-01-3247	2695-24RP			2695-24RPD		50-29-1579	2695-24RP-BK	
22-01-2251	2695-25			2695-25E		22-01-2257	2695-25R		22-01-3257	2695-25RP			2695-25RPD		50-29-1580	2695-25RP-BK	
22-01-2261	2695-26			2695-26E		22-01-2267	2695-26R		22-01-3267	2695-26RP			2695-26RPD		50-29-1581	2695-26RP-BK	
22-01-2271	2695-27			2695-27E		22-01-2277	2695-27R		22-01-3277	2695-27RP			2695-27RPD		50-29-1582	2695-27RP-BK	
22-01-2281	2695-28			2695-28E		22-01-2287	2695-28R		22-01-3287	2695-28RP			2695-28RPD		50-29-1583	2695-28RP-BK	
22-01-2291	2695-29			2695-29E		22-01-2297	2695-29R			2695-29RP			2695-29RPD				
	2695-30			2695-30E			2695-30R			2695-30RP			2695-30RPD				
	2695-31			2695-31E			2695-31R			2695-31RP			2695-31RPD				
	2695-32			2695-32E			2695-32R			2695-32RP			2695-32RPD				
22-01-2331	2695-33			2695-33E		22-01-2337	2695-33R			2695-33RP			2695-33RPD				
	2695-34			2695-34E			2695-34R			2695-34RP			2695-34RPD				
	2695-35			2695-35E			2695-35R			2695-35RP			2695-35RPD				
	2695-36			2695-36E			2695-36R			2695-36RP			2695-36RPD				
	2695-37			2695-37E			2695-37R			2695-37RP			2695-37RPD				
	2695-38			2695-38E			2695-38R			2695-38RP			2695-38RPD				
	2695-39			2695-39E			2695-39R			2695-39RP			2695-39RPD				
	2695-40			2695-40E			2695-40R			2695-40RP			2695-40RPD				
						22-01-2062	2695-06R-5	5	22-01-5102	2695-IORP-2	2						
									22-01-5044	2695-4RP-3	3						
									22-01-5103	2695-IORP-5	5						
									22-01-5111	2695-IIRP-5	5						
									22-01-5104	2695-IORP-9	9						

ADD P/N 22-01-2032 EC NO: UCP 2006-1024 DRAWN BY: JORWANDARR CHECKED BY: CHEKLSCHMIDT APPROVED BY: APRILSMTJH AMSJ	QUALITY SYMBOLS	GENERAL TOLERANCES (UNLESS SPECIFIED)	DIMENSION STYLE	SCALE	DESIGN UNITS	THIRD ANGLE PROJECTION																							
	$\nabla=0$ $\nabla=0$	<table border="1"> <tr><th>mm</th><th>INCH</th></tr> <tr><td>4 PLACES ± --- ± ---</td><td></td></tr> <tr><td>3 PLACES ± --- ± ---</td><td></td></tr> <tr><td>2 PLACES ± --- ± ---</td><td></td></tr> <tr><td>1 PLACE ± --- ± ---</td><td></td></tr> </table>	mm	INCH	4 PLACES ± --- ± ---		3 PLACES ± --- ± ---		2 PLACES ± --- ± ---		1 PLACE ± --- ± ---		MM/IN	---	INCH	<table border="1"> <tr><th>DRAWN BY</th><th>DATE</th></tr> <tr><td>PEREZ-ARGUET</td><td>1988/02/25</td></tr> <tr><th>CHECKED BY</th><th>DATE</th></tr> <tr><td>PATEL</td><td>1988/02/25</td></tr> <tr><th>APPROVED BY</th><th>DATE</th></tr> <tr><td>LENZ</td><td>1988/02/25</td></tr> </table>	DRAWN BY	DATE	PEREZ-ARGUET	1988/02/25	CHECKED BY	DATE	PATEL	1988/02/25	APPROVED BY	DATE	LENZ	1988/02/25	TITLE (2.54)/100 HOUSING FOR KK CRIMP TYPE TERMINALS 2695 SERIES DRAWING
	mm	INCH																											
	4 PLACES ± --- ± ---																												
3 PLACES ± --- ± ---																													
2 PLACES ± --- ± ---																													
1 PLACE ± --- ± ---																													
DRAWN BY	DATE																												
PEREZ-ARGUET	1988/02/25																												
CHECKED BY	DATE																												
PATEL	1988/02/25																												
APPROVED BY	DATE																												
LENZ	1988/02/25																												
DRAFT WHERE APPLICABLE MUST REMAIN WITHIN DIMENSIONS	MATERIAL NO. SEE CHART	DOCUMENT NO. SD-2695	SHEET NO. 2 OF 3																										
THIS DRAWING CONTAINS INFORMATION THAT IS PROPRIETARY TO MOLEX INCORPORATED AND SHOULD NOT BE USED WITHOUT WRITTEN PERMISSION																													

Данный компонент на территории Российской Федерации

Вы можете приобрести в компании MosChip.

Для оперативного оформления запроса Вам необходимо перейти по данной ссылке:

<http://moschip.ru/get-element>

Вы можете разместить у нас заказ для любого Вашего проекта, будь то серийное производство или разработка единичного прибора.

В нашем ассортименте представлены ведущие мировые производители активных и пассивных электронных компонентов.

Нашей специализацией является поставка электронной компонентной базы двойного назначения, продукции таких производителей как XILINX, Intel (ex.ALTERA), Vicor, Microchip, Texas Instruments, Analog Devices, Mini-Circuits, Amphenol, Glenair.

Сотрудничество с глобальными дистрибьюторами электронных компонентов, предоставляет возможность заказывать и получать с международных складов практически любой перечень компонентов в оптимальные для Вас сроки.

На всех этапах разработки и производства наши партнеры могут получить квалифицированную поддержку опытных инженеров.

Система менеджмента качества компании отвечает требованиям в соответствии с ГОСТ Р ИСО 9001, ГОСТ РВ 0015-002 и ЭС РД 009

Офис по работе с юридическими лицами:

105318, г.Москва, ул.Щербаковская д.3, офис 1107, 1118, ДЦ «Щербаковский»

Телефон: +7 495 668-12-70 (многоканальный)

Факс: +7 495 668-12-70 (доб.304)

E-mail: info@moschip.ru

Skype отдела продаж:

moschip.ru

moschip.ru_4

moschip.ru_6

moschip.ru_9