

LEDiL[®]



RANGE & PRECISION – LEDiL[®]'s standard LED optics offer both

LEDiL is a Finnish manufacturer and supplier of top quality LED secondary optics. We are driven by an innovative 'can do, will do' attitude and willing to run that 'extra mile' to bring to our customers the finest solutions that add real value to their end products. Whether they need reflectors or lenses, asymmetric or symmetric. Our standard product range brings over 2.500 cost-effective optical solutions to our customers' needs.

Application support

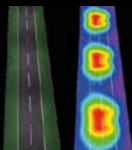
Custom solutions

Symmetric

Asymmetric

Reflectors

Arrays



www.ledil.com

Autumn 2014

LEDiL

Global Supplier of LED Optics for Demanding Applications

Ledil, with design expertise in Finland and production facilities in Europe and China, is leading optics supplier to the world's premier lighting manufacturers. The innovative lenses and reflectors we produce provide optimal optic performance and durability. Relationships with top LED manufacturers allow Ledil to release products alongside newest LEDs; our customers enjoy rapid development and deployment of new fixtures with latest technology. We are THE optics partner to ensure that your LED lighting fixture is the most efficient and innovative on the market. Our engineers possess a "can do, will do" attitude based on quality, innovation and collaboration. Ledil has genuine desire to offer our clients competitive solutions and products and our staff consist of skillful and innovative experts that possess the latest knowledge of LED optics solutions.



Ledil Oy

Salorankatu 10, FI-24240 SALO, Finland
www.ledil.com

Local sales and technical support available in following countries

USA, China, Germany, UK, Benelux, Italy, Spain, Portugal
See www.ledil.com

Shipping locations

Salo, Finland
Hong Kong, China

Franchised Distribution Partners

See www.ledil.com

Dear Customer

Please note that you can find ordering codes for products together with the latest product information at our website:

www.ledil.com

FWHM, efficiency and other values in this catalogue are typical values and subject to chosen LED/optic - combination. Actual values can be found on our website.

We have included saved search paths for your convenience. URL to the saved search can be found under each product family name. This address will take you directly to the family listing.

Subscribe to our newsletter and get the latest product information at www.ledil.com/subscribe

LED compatibility:

Cree

[CXA1310](#)
[CXA15](#)
[CXA1520](#)
[CXA1816](#)
[CXA1830](#)
[CXA2011](#)
[CXA25](#)
[CXA30](#)
[CXA35](#)
[MC-E](#)
[MC-E RGB](#)
[MK-R](#)
[MK-R2](#)
[ML-E](#)
[MP-L](#)
[MT-G](#)
[MT-G2](#)
[MX-3](#)
[MX-6](#)
[XB-D](#)
[XB-H](#)
[XB-B/G](#)
[XM-L](#)
[XM-L EZW](#)
[XM-L HVW](#)
[XM-L2](#)
[XM-L RGB](#)
[XP-E](#)
[XP-E HEW](#)
[XP-E2](#)
[XP-G](#)
[XP-G2](#)
[XP-L](#)
[XQ-D](#)
[XQ-E](#)
[XR-E](#)
[XT-E](#)
[XT-E HVW](#)

Osram

[DDR](#)
[Duris E5](#)
[Duris P5](#)
[Duris S5](#)
[Duris S8](#)
[GDr](#)
[GDr+](#)
[JR Dragon](#)
[OsISq EC](#)
[OsISq PC](#)
[OsI SSL150](#)
[OsI SSL80](#)
[Ostar L](#)
[Ostar L+](#)
[Ostar-SMT RGB](#)
[PDr](#)
[PrL C AC \(LEP-2000\)](#)
[PrL C AC \(LEP-800\)](#)
[PrL C Z3 LES19](#)
[PrL C Z3 LES23](#)
[PrL C Z3 LES9](#)
[PrL C Z4 LES19](#)
[SFH-4751](#)
[SFH 4715S \(IR\)](#)
[Soleriq E30](#)
[Soleriq P6](#)
[Soleriq P9](#)
[Soleriq S13](#)
[Soleriq S19](#)

Tridonic

[S-SLE G2 LES19](#)
[S-SLE G2 LES23](#)
[S-SLE G2 LES26](#)
[S-SLE G3 LES19](#)
[S-SLE G3 LES23](#)
[S-SLE-P G3 LES10](#)
[S-SLE-P G3 LES17](#)

Stanley

[Stanley J1](#)
[Stanley G1](#)

Nichia

[107](#)
[COB204](#)
[NC4U 133A](#)
[NC4U 134A](#)
[NCSU033A](#)
[NCSU033B](#)
[NCSU034A](#)
[NCSU034B](#)
[NCSxx19A](#)
[NCSxx19B](#)
[NF2x757A](#)
[NF2x757D](#)
[NJSx036](#)
[NS3x83](#)
[NS6x83](#)
[NS9x383](#)
[NSBx1066A](#)
[NSBx110](#)
[NSBx121A](#)
[NSCxJ216A](#)
[NSCxJ36A](#)
[NSMx286M](#)
[NSW157T](#)
[NV5xx19A](#)
[NV5xx19B](#)

Samsung

[LC026B/LC040B](#)
[LH351A\(3535\)](#)
[LH351B](#)
[LM231 A/B](#)
[LM362A](#)
[LM561B](#)
[Sunnix5](#)

Vossloh-Schwabe

[WU-M-461](#)
[WU-M-462](#)
[WU-M-464](#)
[WU-M-484](#)
[WU-M-485](#)
[WU-M-486](#)

LUXEON

[LX A](#)
[LX CoB1203](#)
[LX CoB1204/1205](#)
[LX CoB1208](#)
[LX H50-2](#)
[LX K12](#)
[LX K16](#)
[LX K2](#)
[LX K4](#)
[LX K8](#)
[LX M](#)
[LX MZ](#)
[LX PWT](#)
[LX Q](#)
[LX R](#)
[LX Rebel](#)
[LX Rebel ES](#)
[LX Rebel+](#)
[LX S](#)
[LX S2000](#)
[LX S3000](#)
[LX S5000](#)
[LX T](#)
[LX TX](#)
[LX Z](#)
[LX Z ES](#)
[LX Z RGB](#)
[LZ4 RGB](#)

Sharp

[Double Dome](#)
[Mega Zenigata](#)
[Mini Zenigata](#)
[Tiger Zenigata](#)

LedEngin

[LZ1 \(00U600\)](#)
[LZ1 \(00UA00\)](#)
[LZ1 \(00xW00\)](#)
[LZ4 \(00xW00\)](#)

Bridgelux

[BXRA ES R](#)
[BXRA ES S](#)
[BXRA LS](#)
[BXRA RS](#)
[SM4](#)
[Vero10](#)
[Vero13](#)
[Vero18](#)
[Vero29](#)
[V6](#)
[V8](#)
[V10](#)

Luminus

[CSM-360-W](#)
[CSM-14](#)
[CXM-18](#)
[CXM-18](#)
[CXM-6](#)
[CXM-7](#)
[CXM-9](#)
[SSM-80](#)
[SST-50](#)
[SST 90](#)

Seoul

[MJT4040](#)
[AX3221](#)
[P4](#)
[P5](#)
[P7](#)
[Z5](#)
[Z5 M](#)
[Z5 M1](#)
[Z5 P](#)
[ZC12/18](#)
[ZC25/40](#)
[ZC6](#)

Avago

[Jade](#)
[5630](#)

Citizen

[CLL01x](#)
[CLL02x](#)
[CLL03x](#)
[CLL04x](#)
[CLL05x](#)
[CL-L230](#)
[CL-L233](#)
[CL-L235](#)
[CL-L300](#)
[CL-L340](#)
[CL-L400](#)

LG

[Cer 3535](#)
[COB-4W](#)
[COB-10W](#)
[COB-13W](#)
[COB-17W](#)
[COB-24W](#)
[H35B0](#)
[H35C0](#)
[H35C1](#)
[LG 3030](#)
[LG 5630](#)
[LG 6030](#)

Lite-On

[LTP-L-M036](#)
[LTP-L-M074](#)

DDR = Diamond Dragon
 OsISq = Osion Square
 Ostar L = Ostar Lighting
 PrL C = PrevalLED Core
 S-SLE = STARK SLE
 S-SLE-P = STARK SLE PURE

LARISA

www.ledil.com/larisa



LARISA-O
PMMA / Black PC
H: 7,5 mm
D: 9,9 x 9,9 mm
Beam type: Oval



LARISA-W
PMMA / Black PC
H: 7,5 mm
D: 9,9 x 9,9 mm
Beam type: Wide



LARISA-M
PMMA / Black PC
H: 7,5 mm
D: 9,9 x 9,9 mm
Beam type: Medium

Code	Typ. FWHM	Typ. Eff.	Typ. cd/lm
LARISA-M	32	86	2,2
LARISA-O	40 x 22	81	2,1
LARISA-RS	19	80	3,7
LARISA-W	48	85	1,2
LARISA-WW	57	84	0,9
LARISA-RZ	27	77	1,9



LARISA-RZ
PMMA / Black PC
H: 7,5 mm
D: 9,9 x 9,9 mm

XP-E
XP-G
XB-D
NCsxx19A
NF2x757A
NF2x757D
NVsxx19A
OsLSL150
OsLSL80
OsSg EC
OsSg PC
DurisPS
LX A
LX Rebel
LX Rebel ES
LX Z
H35C0
H35B0

LISA

www.ledil.com/lisa



LISA-SS
PMMA / White PC
H: ≈7,3 mm
D: 10,8 mm
Beam type:
Smooth spot



LISA-RS
PMMA / White PC
H: ≈7,3 mm
D: 10,8 mm
Beam type: Real spot

XP-E
XP-G
LX Rebel
GDr
PDr
Z5

LISA2

www.ledil.com/lisa2



LISA2-RS-PIN
PMMA / Black PC
H: ≈6,6 mm
D: 9,9 mm
Beam type: Real spot

LISA2-R-PIN
Hyper Reflective white PC
H: ≈6,6 mm
D: 9,9 mm
Beam type: Extra² wide



Code	Typ. FWHM	Typ. eff.	Typ. cd/lm
LISA2-M	22	89	2,8
LISA2-O	45 x 21	82	2,2
LISA2-O-90	19 x 48	82	2,2
LISA2-O-90-PIN	48+18°	83	TBA
LISA2-RS	19	89	3,1
LISA2-W	34	88	1,8
LISA2-WW	46	89	1,1
LISA2-WWW	80	83	0,4

H35C1
H35C0
OsSg EC
OsLSL150
OsLSL80
SFH 4715S (R)
DurisPS
LX A
LX H50-2
LX Q
LX Rebel ES
LX Rebel
LX T
LX Z
LX Z ES
Double Dome
NCsxx19A
NCsxx19B
NVsxx19A
XB-D
XP-E
XP-E2
XP-G
XP-G2
XP-E
XP-E
Z5

FWHM angles, efficiencies and cd/lm values contained herein are typical values. Actual measured values depend of the specific LED/optic combination. Go to www.ledil.com for LED specific values and optical datasheets.

Single lenses

TINA

www.ledil.com/tina



TINA-WW
PMMA / White PC
H: ≈10 mm
D: 16,1 mm
Beam type:
Extra wide

Code	Typ. FWHM	Typ. eff.	Typ. cd/lm
TINA-D	16	92	6,1
TINA-M	29	88	2,1
TINA-O	34 x 15	89	3,4
TINA-RS	13	93	10,9
TINA-W	48	91	1,3
TINA-WW	61	91	0,8

TINA2

www.ledil.com/tina2



TINA2-R-CLIP16
Hyper Reflective white PC
H: 10,1 mm
D: 16,1 mm
Beam type: Wide



TINA2-SS
PMMA / PC
H: ≈10 mm
D: 16,1 mm
Beam type:
Smooth spot



TINA2-M
PMMA / PC
H: ≈10 mm
D: 16,1 mm
Beam type: Medium

Code	Typ. FWHM	Typ. eff.	Typ. cd/lm
TINA2-D	16	89	6,9
TINA2-M	29	86	2,5
TINA2-O	35 x 16	87	3,5
TINA2-RS	14	91	10,4
TINA2-W	46	87	1,37
TINA2-WW	58	87	0,9
TINA2-R	TBA	TBA	TBA

TINA3

www.ledil.com/tina3



TINA3-S
PMMA / White PC
H: 11,5 mm
D: 16,1 mm
Beam type: Spot



TINA3-W
PMMA / White PC
H: ≈7 mm
D: 16,1 mm
Beam type: Wide

Code	Typ. FWHM	Typ. eff.	Typ. cd/lm
TINA3-00	59 x 39	90	1,20
TINA3-S	13	77	8,40
TINA3-W	39	90	1,70
TINA3-WW	53	90	1,00
TINA3-WWW	71	88	0,60

FLORENTINA

www.ledil.com/products

TINA2-L12 multiholder
12-up with glare
protection

FLORENTINA-SHD

PC
H: 22,5 mm
D: 286.8 x 27,5 mm



FLORENTINA-HLD

PC
H: 10,2 mm
D: 285,6 x 19,5 mm

LX-A | LX-T
LX Rebel
LX Rebel ES
LX H50-2
LX Z ES
GDF+
Od SSL150
Od SSL80
SFH 47155 (LR)
MX-G | XP-E
XP-G | XT-E
XP-G2
NCSxx19A
NS5x83
LHS31 (A0559)
S3S3H
Z5 | Z5M

MX-G | XB-D
XDL | XW-L2
XP-E | XP-E2
XP-E HEW
XP-G | XP-G2
XP-E
CL-L400
OILPxx050FOL
NCSxx19A
NF2x757A
NS3x83
NS5x83
NS9x153
NVSxx19A
NVSxx19B
LX Z ES
LX B | LX T
LX Rebel
LX Rebel ES (A)
DurisS5
GDF+
OsSg EC
OsSg PC
Od SSL150
Od SSL80
SFH 47155 (LR)
Z5

Z5
Jlead
H3SC
H3SB0
H3SC 1

ROSE

www.ledil.com/rose



ROSE Extra wide

Material: PC / PC
H: 13,5 mm
D: 21,6 x 21,6 mm



ROSE Medium

Material: PC / PC
H: 15,6 mm
D: 21,6 x 21,6 mm

Beam type code	Typ. FWHM	Typ. eff.	Typ. cd/lm
-D	16	85	7,1
-M	30	83	2,5
-MD	24	TBA	TBA
-O	43 x 15	81	3,1
-O-90	13 x 44	81	3,6
-RS	11	88	21,7
-SS	15	87	9,37
-W	51	81	1,1
-WW	59	TBA	0,78
-WWW	80	84	0,4

- MC-E
- MX-3
- MX-6
- XM-L
- XM-L EZW
- XM-L2
- XP-E
- XP-E HEW
- XP-G
- XP-E
- E2
- E3
- E6-F
- NS5x336
- NS5x83
- NS9x133
- NCSU033A
- LX K2
- LX Rebel
- LX Rebel ES
- LX Rebel ES+
- OL P-x050F6L
- Stanley 3J
- Stanley 6J
- H35C0

ROSE-UV

www.ledil.com/rose

LEDiL's next generation of UV optics for Nichia type packaged UV-LEDs offers substantially improved performance and durability over previous generation optics. With the introduction of new materials such as optical grade silicones LEDiL has been able to considerably increase optical efficiency and UV resistance of the optics.

- NCSU032A
- NCSU033B
- NC4U133A
- NCSU034A
- NCSU034B
- NC4U134A



FCA14011_G2-NIS033U-S

Silicone/PC
H: 12,9 mm
D: 21,6 x 21,6 mm
Efficiency: 92%
Beam type: Spot



FCA14405_G2-NIS033U-M

Silicone/PC
H: 12,9 mm
D: 21,6 x 21,6 mm
Efficiency: 91%
Beam type: Medium



FCA14464_G2-NIS033U-W

Silicone/PC
H: 12,9 mm
D: 21,6 x 21,6 mm
Beam type: Wide

SIRI-A

www.ledil.com/siri

SIRI family is a series of specialty optics for wide area lighting applications.

- XP-E
- XB-D
- XM-L
- XM-L2
- XP-G
- XP-G2
- XT-E
- OsSqr EC
- OsSqr PC
- OsS150
- NS5x383
- NS5x19A
- NS5x19B
- LX-A
- LX-R
- LX Rebel ES



SIRI-A

PMMA
H: 13,9 mm
D: 4,2 mm
Beam type: Wide area lighting



SIRI-DOME

PMMA
H: 13,9 mm
D: 4,9 mm
LED cover with no effect on the light



SIRI-DIFF

PMMA
H: 13,9 mm
D: 4,9 mm

TWIDDLE

www.ledil.com/twiddle

Code	Typ. FWHM	Typ. eff.	Typ. cd/lm
TWIDDLE-D	20	81	TBA
TWIDDLE-M	32	72	TBA
TWIDDLE-RZ-D	TBA	TBA	TBA
TWIDDLE-RZ-M	TBA	TBA	TBA



TWIDDLE-D

PMMA
H: 14,3 mm
D: 21,6 mm
Beam type: Diffused spot

- NS6x83
- MX-6
- XR-E
- XP-G
- XP-G2
- XT-E

FWHM angles, efficiencies and cd/lm values contained herein are typical values. Actual measured values depend of the specific LED/optic combination. Go to www.ledil.com for LED specific values and optical datasheets.

Single lenses

LAURA GenII

www.ledil.com/laura

LAURA GenII is the next generation of LEDiL's classic LAURA family. New LAURA GenII optics feature new thinner holder design. GenII optics are backwards compatible with previous generations and offer the same beam specifications and exceptional quality of light at even more affordable price.



G2-LAURA-O-WAS

PMMA / PC
H: ≈13 mm
D: 21,6 x 21,6 mm
Beam type:
Wall washer



Ostar L
OstSq EC
OstSq PC
Ost SSL150
Ost SSL80
SFH 47155 (IR)
XB-D
XP-E2
XP-E
XP-E-HEW
XP-G
XP-G2
XP-L
XP-L
XP-L
Cst 3535
H35C0
H35C1
Stanley3J
Stanley6J
107
NC-sxx19A
NC-sxx19B
NF-z757A
NS9x153
NV-sxx19A
LXA
LX H50-2
LX PWT
LX Q
LX R
LX Rebel
LX Rebel ES
LX T
LX Z ES
Dobla Dome
CL-1400
Jade
Z5



G2-LAURA-WW

PMMA / PC
H: ≈13 mm
D: 21,6 x 21,6 mm
Beam type:
Extra wide



G2-LAURA-M

PMMA / PC
H: ≈13 mm
D: 21,6 x 21,6 mm
Beam type:
Medium



G2-LAURA-RS

PMMA / PC
H: ≈13 mm
D: 21,6 x 21,6 mm
Beam type: Real spot

GenII LAURA ordering codes	Typ. FWHM	Typ. eff.	Typ. cd/lm
CA13629 G2-LAURA-D-P	13	93	9,3
CA13627 G2-LAURA-M-P	30	92	2,6
CA13631 G2-LAURA-O-P	40 x 13	91	4,8
CA13628 G2-LAURA-RS-P	8	93	33,2
CA13630 G2-LAURA-SS-P	11	93	16,5
CA13634 G2-LAURA-W-P	46	91	1,55
CA13633 G2-LAURA-WW-P	66	86	0,7
CA13636 G2-LAURA-R-XW-P	72	86	0,6
CA13632 G2-LAURA-R-W-P	70	81	0,8
CA13639 G2-LAURA-SS-WAS-P	Asymmetric	92	11,6
CA13638 G2-LAURA-O-WAS-P	Asymmetric	84	2,6
CA13637 G2-LAURA-O90-P	TBA	TBA	TBA

LAURA

www.ledil.com/laura



LAURA-RS

PMMA / PC
H: ≈13 mm
D: 21,6 x 21,6 mm
Beam type: Real spot



LAURA-R-WX

Hyper Reflective
PC / PC
H: ≈13 mm
D: 21,6 x 21,6 mm
Beam type:
Extra² wide

Ostar L
OstSq EC
OstSq PC
Ost SSL150
Ost SSL80
SFH 47155 (IR)
XB-D
XP-E
XP-E
XP-E-HEW
XP-L
XP-G
XP-G2
Cst 3535
H35C0
H35C1
Stanley3J
Stanley6J
107
NC-sxx19A
NC-sxx19B
NF-z757A
NS9x153
NV-sxx19A
LXA
LX T
LX H50-2
LX PWT
LX Rebel
LX R
LX Rebel ES
LX Z ES
LX Q
Stanley3J
Stanley6J
Dobla Dome
CL-1400
Jade
Z5

Code	Typ. FWHM	Typ. eff.	Typ. cd/lm
LAURA-D	15	88	6,2
LAURA-M	29	88	2,5
LAURA-O	40 x 12	88	4,3
LAURA-RS	8	93	30,5
LAURA-SS	11	91	14,5
LAURA-W	42	88	1,7
LAURA-WW	66	86	0,70
LAURA-XW	72	85	0,6
LAURA-R-W	70	77	0,52



LAURA-SS-WM

PMMA / PC
H: ≈13 mm
D: 21,6 x 21,6 mm
Beam type:
Wall washer

The information contained herein is the property of LEDiL Oy, Satorankatu 10, FI-24240 SALO, Finland, and is subject to change without prior notice. Please visit www.ledil.com for additional information, such as the latest photometric files, 3D mechanical models, and application notes relating to handling, gluing and taping.

- 107
- NC5xx19A
- NC5xx19B
- NF2x757A
- NS6x83
- NS9x383
- NV5xx19A
- NV5xx19B
- OD1
- OD1
- OS150 EC
- OS150 PC
- OS150 150
- OS150 80
- Ostar LH
- Duris55
- Ostar-SMT RGB
- MC-E
- XB-D
- XM-L
- XM-L2
- XP-E
- XP-E-NEW
- XP-C
- XP-E
- XT-E
- MX-6
- XB-H
- XP-E2
- XP-G2
- XP-L
- XO-E
- HB50
- HB80
- HB50
- CL1400
- LX-A
- LX150-Z
- LX-Q
- LX-R
- LX Rebel
- LX Rebel ES
- LXT
- LX Z ES
- Z5
- Z5 M1
- LH351A(3535)
- SummiS
- OLP505050FL
- LZ1(00U600)
- LZ1(00U400)
- LZ1(00xW00)

LEILA GenII

www.ledil.com/leila

New LEILA GenII is the next generation of LEDiL's classic LEILA family, featuring a new thinner holder design. GenII optics are backwards compatible with previous generations offering same beam specifications and exceptional quality of light at even more affordable price.



LEILA-G2-O-90

PMMA / PC
H: 14,7 mm
D: 21,6 mm
Beam type: Oval



LEILA-G2 Real Spot

PMMA / PC
D: 21,6 mm
H: 14,7 mm



LEILA-G2-D

PMMA / PC
H: 14,77 mm
D: 21,6 mm

GenII LEILA ordering codes	Typ. FWHM	Typ. eff.	Typ. cd/lm
CA14511_G2-LXP2-O-90-P	11 x 39	89	4,6
CA14512_G2-LXP2-O-90	11 x 39	89	4,6
CA14503_G2-LXP2-RS-P	9,6	94	23,1
CA14504_G2-LXP2-RS	9,6	94	23,1
CA14505_G2-LXP2-RS2-P	8,5	90	22,1
CA14506_G2-LXP2-RS2	8,5	90	22,1
CA14507_G2-LXP2-D-P	TBA	TBA	TBA
CA14508_G2-LXP2-D	TBA	TBA	TBA
CA14509_G2-LXP2-M-P	TBA	TBA	TBA
CA14510_G2-LXP2-M	TBA	TBA	TBA



LEILA

www.ledil.com/leila

LEILA-R-CLIP16

Hyper reflective PC
H: 13 mm
D: 21,6 mm
Typ. FWHM: 73°
Typ. efficiency: 90%
Beam type: Extra² Wide



LEILA Real Spot

PMMA / PC
D: 21,6 mm
H: 13,3 mm



LEILA-M

PMMA / PC
H: ≈13 mm
D: 21,6 mm
Beam type: Medium

Beam type code	Typ. FWHM	Typ. eff.	Typ. cd/lm
-MD	24	90	TBA
-O	39 x 11	88	4,8
-O-90	11 x 39	89	4,6
-REC	37 x 26	84	2,4
-RS	9,6	94	23,1
-RS2	8,5	90	22,1
-SS	12	TBA	
-W	42	90	1,6
-WW	42	TBA	TBA
-WAS	Asymm.	TBA	TBA

LEILA for UV lighting

Special products made of COP, an extremely UV-withstanding material suitable for various UV-lighting applications.



FCN12592_LEI1-D-COP

LedEngin 5W UV (365nm)
Material: COP / PC
H: 15,1 mm
D: 21,6 mm
FWHM: 12°
Beam type: Smooth spot
Efficiency: 92%



FCN12592_LEI1-D-COP

LedEngin 5W UV (400 nm)
Material: COP / PC
H: 15,1 mm
D: 21,6 mm
FWHM: 12°
Beam type: Smooth spot
Efficiency: 92%

FWHM angles, efficiencies and cd/lm values contained herein are typical values. Actual measured values depend of the specific LED/ optic combination. Go to www.ledil.com for LED specific values and optical datasheets.

Single lenses

SFH 4715S (IR)

IRENE

www.ledil.com/products

LEDIL's IRENE is especially developed with square beam-pattern for IR-CCT camera chip compatibility.



IRENE-IR-16
PMMA / PC
H: 14,3 mm
D: 21,6 mm
FWHM: 20° + 19°
[sim.]

Code	Typ. FWHM	Height	Diameter
IRENE-IR-4	67° + 67°	14,3	21,6
IRENE-IR-8	32° + 32°	14,3	21,6
IRENE-IR-12	25° + 25°	14,3	21,6
IRENE-IR-16	20° + 19° [sim.]	14,3	21,6
IRENE-IR-25	11° + 9° [sim.]	14,3	21,6

IRINA

www.ledil.com/irina

XP-E
XP-G



IRINA-RS

PMMA / PC
H: 11,7 mm
D: 24,7 mm
Beam type: Real spot

TITANUM / SPUTNIK

www.ledil.com/products

TITANUM / SPUTNIK family of optics for Osram and Seoul LEDs. Versions that have ordering code ending with -C have metallized coating making them suitable for potting. Go to www.ledil.com for specific order codes and more information.

GD-L
PDI
LI Dragon
P4
P5

Code	Typ. FWHM	Typ. eff.
TITANUM/SPUTNIK-M	26	87
TITANUM/SPUTNIK-O	36 X 8	89
TITANUM/SPUTNIK-SS	9	84
TITANUM/SPUTNIK-W	66	71



TITANUM/ SPUTNIK-90-C

PMMA / PC
H: 14,3 mm
D: 21,6 mm
Beam type: Oval

EMILY

www.ledil.com/emily



EMILY-O-WAS

PMMA,
H: 14,8 mm,
D: 26 mm
Beam type: Tilted oval

Code	Typ. FWHM	Typ. eff.	Typ. cd/lm
EMILY-SS-WAS	8	90	12
EMILY-O-WAS	43 x 10	87	3,6
EMILY-D	11	91	14
EMILY-M	18	91	7,4
EMILY-M2	29	89,2	3,05
EMILY-O	44 x 10	89	4,5
EMILY-O-90	45 x 10	89	4,2
EMILY-SS	11	80	13,4
EMILY-W	39	86	1,5
EMILY-WWW	58	86	1
EMILY-RS	8	90	29,5



EMILY-M

PMMA
H: 15,1 mm
D: 26 mm
Beam type: Medium



EMILY-WWW

PMMA
H: 13,3 mm
D: 26 mm
Beam type: Extra wide



EMILY-O

PMMA
H: 15,1 mm
D: 26 mm
Beam type: Oval

Double Dome
LX
LX H50-2
LX Rebel
LX Rebel +
LX T
LX Rebel ES
OsEq EC
Os SSL80
Os SSL150
NCsxx19A
NCsxx19B
NVsxx19A
NVsxx19B
NS97333
XML-BWV
XP-E
XP-E2
XP-G
XP-G2
XP-L
XM-L
XM-L2
XT-E
Z5
Z5 M1

The information contained herein is the property of LEDIL Oy, Salorankatu 10, FI-24240 SALO, Finland, and is subject to change without prior notice. Please visit www.ledil.com for additional information, such as the latest photometric files, 3D mechanical models, and application notes relating to handling, gluing and taping.

- MC-E
- MK-R
- XM-L
- XM-L EZW
- XM-L HVW
- XM-L2
- XT-E
- XP-G2
- NS9x383
- NSM286M
- LX-M
- LX-M2
- DurisS8

EVA

www.ledil.com/eva



EVA-S
PMMA
H: 16,4 mm
D: 35 mm
Beam type: Spot



EVA-M
PMMA/PC
H: 16,4 mm
D: 37,7 mm
Beam type: Medium



EVA-WW
PMMA/PC
H: 16,4 mm
D: 37,7 mm
Beam type: Extra wide

Code	Typ. FWHM	Typ. eff.	Typ. cd/lm
EVA-D	16	80	4,92
EVA-M	24	89	3,2
EVA-O	38 x 17	85	3,06
EVA-S	13	93	TBA
EVA-W	38	83	1,4
EVA-WW	53	82	1,7
C10685 EVA-M	26	89	2,8



EVA-O
PMMA
H: 16,4 mm
D: 35 mm
Beam type: Oval

- V10
- BXRA ES 5
- CXA15
- MT-G
- MT-G2
- MK-R
- LXA
- LX-M
- LX-M2
- NSC1036A
- NSM286M
- LPL-M036

MIRA

www.ledil.com/mira



MIRA-M
PC/PC
H: ≈16 mm
D: ≈35 mm
Beam type: Medium



MIRA-WW
PC/PC
H: ≈16 mm
D: ≈35 mm
Beam type: Extra wide



MIRA-W
PC
H: 14,7 mm
D: 32,4 mm
Beam type: Wide

Code	Typ. FWHM	Typ. eff.	Typ. cd/lm
MIRA-M	28	83	2,1
MIRA-W	38	82	1,5
MIRA-WW	58	83	0,9

- LXT
- XT-E

KIKI

www.ledil.com/products

KIKI-A lens designed for backlighting applications. An optical design carefully optimised for maximally uniform light distribution even for wider distances between LED placements.



KIKI-A
PMMA
H: 5,9 mm
D: 21,6 x 14 mm
Beam type: Wide-Area Lighting

Code	Typ. FWHM	Typ. eff.	Typ. cd/lm
KIKI-A	163	92	0,28
KIKI-B	TBA	TBA	TBA

PDR

EYA

www.ledil.com/eya



EYA-O
PMMA/PC
H: 29,1 mm
D: 30,4 mm
Beam type: Oval



EYA-S
PMMA/PC
H: 29,1 mm
D: 30,4 mm
Beam type: Spot

- Od SSL150
- Od SSL80
- LX Rebel
- LX Rebel ES
- XP-E
- XP-E2
- XP-G
- XP-G2
- XT-E
- NC-Sxx19A
- NV-Sxx19A
- Z5

JULIA-A

www.ledil.com/julia



JULIA-A
PMMA
H: 4,8 mm
D: 18,8 mm
Beam type: Wide area lighting

FWHM angles, efficiencies and cd/lm values contained herein are typical values. Actual measured values depend of the specific LED/optic combination. Go to www.ledil.com for LED specific values and optical datasheets.

Single lenses

HEIDI

www.ledil.com/heidi



HEIDI-WR

PMMA, H: 11,7 mm, D: 21,6 mm
Beam type: Round



HEIDI-W2

PMMA
H: 11,7 mm
D: 21,6 mm
Beam type: Wide



HEIDI-O

PMMA
H: 11,7 mm
D: 21,6 mm
Beam type: Oval

Code	Typ. FWHM	Typ. eff.	Typ. cd/lm
HEIDI-D	10	90	14,8
HEIDI-M	26	89	3,8
HEIDI-O	49 x 11	87	4,5
HEIDI-O-90	13 x 44	87	4,7
HEIDI-RS	8	92	21,8
HEIDI-SS	15	90	6,8
HEIDI-W	32	87	2,6
HEIDI-W2	45	80	1,1
HEIDI-WR	31	TBA	TBA
HEIDI-REC	TBA	TBA	TBA
HEIDI-REC-90	TBA	TBA	TBA

OsSqa EC
OsSqa PC
OsS1-150
OsS1-80
ML-E XM-L
XB-D XB-H
XP-E XP-E2
XT-E XP-L
XP-G XP-G2
Z5-M1
Z5-P Z5
Ccr-3535
H35CO
107
NCsxx19A
NCsxx19B
NVsxx19A
NVsxx19B
NF2x757A
NSSW157T
LX H50-2
LX PWT
LX Rebel
LX Rebel LX-A
LX Rebel ES
Double Dome

FLARE

www.ledil.com/flarefamily



FLARE-MINI-A

PMMA
H: 8,6 mm
D: 16 mm
Beam type: Oval



FLARE-C

PMMA
H: 14,6 mm
D: 24,5 x 24,5 mm
Beam type: Rectangular



FLARE-MAXI-D

PMMA
H: 16,7 mm
D: 33,9 x 33,9 mm
Beam type: Rectangular

Code	Typ. FWHM	Typ. eff.	Typ. cd/lm
FLARE-B	102 x 11	93	1,6
FLARE-C	87 x 8	93	3,2
FLARE-C-D	95 x 21	93	1
FLARE-MAXI	99 x 13	94	2,3
FLARE-MAXI-D	108 x 15	94	1,8
FLARE-MINI-A	106 x 20	94	1,1
FLARE-MINI-AD	98 x 19	94	1,1
FLARE-MINI-AD-PIN	98 x 19	94	1,1
FLARE-MINI-A-PIN	106 x 20	94	1
LEDIL-FLARE	138 x 20	92	1,3



FLARE-MAXI

PMMA
H: 16,7 mm
D: 33,9 x 33,9 mm
Beam type: Rectangular



FLARE-MINI-AD

PMMA
H: 8,6 mm
D: 16 mm
Beam type: Oval

LX A
LX K2
LX H50-2
LX M
LX MZ
LX Rebel
LX Rebel ES
LXT
Double Dome
NCsxx19A
NCsxx19B
NS9x383
NVsxx19A
NVsxx19B
OsSqa EC
OsSqa PC
OsS1-150
OsS1-80
Mik-R
XB-D
XM-L
XM-L2
XP-E
XP-E2
XP-G
XP-G2
XP-L
XR-E
XT-E
H35CO
H35CT
Z5
Z5-M1

IRIS

www.ledil.com/iris



IRIS-O

PMMA / PC
H: ≈29 mm
D: 38 mm
Beam type: Oval



IRIS

PMMA / PC
H: ≈29 mm
D: 38 mm
Beam type: Spot



IRIS-M

PMMA / PC
H: ≈29 mm
D: 38 mm
Beam type: Medium

Code	Typ. FWHM	Typ. eff.	Typ. cd/lm
IRIS-M	26	86	2,7
IRIS-O	39 x 28	84	1,9
IRIS-RS	5	93	66
IRIS-RS2	9	91	19,2
IRIS-S	13	89	10,9

Mc-E XP-L
XM-L XM-L2
XP-E XP-E2
XP-G XP-G2
OsS1-150
OsS1-80
Ostar L
OsSqa EC
SFL7-251(B)
LX H50-2
LX M LX MZ
LX Rebel
LX Rebel ES
LXT
NCsxx19A
NVsxx19A
NS9x383
SST-50 SST-90
Z5 Z5-M1
H35CT

The information contained herein is the property of LEDIL Oy, Satorankatu 10, FI-24240 SALO, Finland, and is subject to change without prior notice. Please visit www.ledil.com for additional information, such as the latest photometric files, 3D mechanical models, and application notes relating to handling, gluing and taping.

BILLIE

www.ledil.com/billie



BILLIE-A
PMMA / PC
H: 16.1 mm
D: 21.5 mm
Beam type: Asymmetric

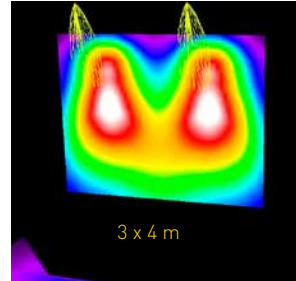


BILLIE-B
PMMA / PC
H: 16.1 mm
D: 21.5 mm
Beam type: Asymmetric

BILLIE, a rectangular wall-washing optic with excellent beam uniformity; another unique innovation made possible by LEDiL. Especially designed for indoor and outdoor architectural and billboard lighting, BILLIE is the perfect solution for small concealed fixtures.

APPLICATION EXAMPLE OF ENERGY EFFICIENT BILLBOARD LIGHTING

- Beam is tilted 18° to achieve even illumination of the billboard face
- Beam can be adjusted sideways with optional sublens
- Luminous flux: 884 lm
- Emin 104 lx, Emax 218 lx
- Typical uniformity 1:2



LX A
LX R
LX Rebel
LX Rebel ES
NCsxx19A
NF2x757A
N5SW157T
NVsxx19A
OsSSL80
OsSSL150
DurisS5
XB-D
XP-E
XP-G
XP-G2
XP-E
Z5

SEANNA-A

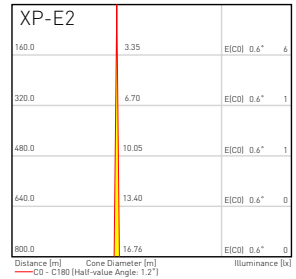
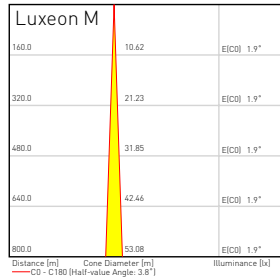
www.ledil.com/products



SEANNA-A
PMMA
D: 152,6 mm
H: 79 mm
Beam type: Real Spot

SEANNA's patent pending design has two optical elements. A primary TIR lens ensuring that all light will hit the secondary Fresnel resulting in maximum performance and efficiency.

- Optimized for a variety of high power LED's
- Peak value at 25m up to 800 cd/lm and spot as narrow as 1-3° depending on LED
- Holder design allows both pole and integrated installation options



LX M
LX Rebel
LX Rebel ES
LX S
MK-R
XB-D
XM-L
XM-L2
XP-E
XP-G
XP-G2
XP-E
SSM-80

LX M
LX A
LX Rebel
LX Rebel ES
LX M Z
LX T
Doubt Dome

VERONICA

www.ledil.com/veronica



VERONICA-RS
PMMA
H: 26 mm
D: 12,2 mm
Beam type: Real Spot

TIR lens for installations with potting resin.

Code	Typ. FWHM	Typ. eff.	Typ. cd/lm
VERONICA-O	54 + 11°	84	4,2
VERONICA-RS	12	90	18,4
VERONICA-SQ-O	56+12	82	3,2
VERONICA-SQ-M	TBA	TBA	TBA
VERONICA-SQ-WW	TBA	TBA	TBA

AMELIA

www.ledil.com/products



AMELIA-S
PMMA
H: 45 mm
D: 27,1 mm
Beam type: Spot

LX S

FWHM angles, efficiencies and cd/lm values contained herein are typical values. Actual measured values depend of the specific LED/ optic combination. Go to www.ledil.com for LED specific values and optical datasheets.

- LX A
- LX M
- LX MZ
- LX Rebel
- MK-R
- XM-L2
- XP-G
- XP-G2
- XP-E2
- NV5xx19B
- OsIsc EC

BLONDIE

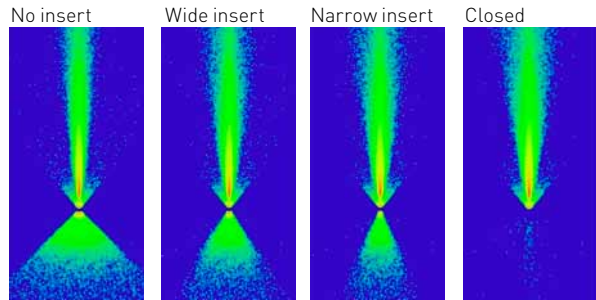
www.ledil.com/blondie



BLONDIE-A
PC
H: 45 mm
D: 92 x 78.3 mm

Blade type wall grazing luminaires are good choices for emphasizing details and adding structure to buildings. LEDiL created the BLONDIE reflector which produces a very tight blade type wall washing beam with a single LED source using only a few watts of energy.

To shape the double-sided beam of BLONDIE further, it comes with three interchangeable inserts. With these additional reflector pieces, the backside light can easily be shaped into different angles.



FRIDA-A

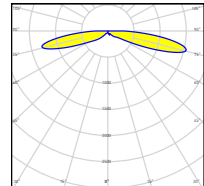
www.ledil.com/products



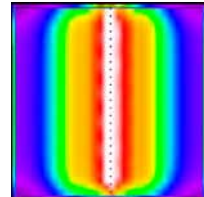
FRIDA-A
PMMA
H: 9,7 mm
D: 12,2 + 7,9 mm
Beam type:
Wide area lighting

FRIDA-A FOR REFRIGERATOR LIGHTING

- Application area: 1,52 x 1,52 m
- Luminaire row installed along the centerline of the cabinet
- Emits light sideways giving optimal shelf illumination
- Eav: 795 lx
- Emin: 142 lx
- Emax: 2410 lx
- u0: 0,178



- XP-G
- XB-D



HELENA

www.ledil.com/helena

Diamond turning is the method of choice when producing some of the very highest class optics in the world. We have used it to make HELENA, fresnel type lens having surface accuracy of a hundredth of a millimetre. This means better light control and efficiency – lighting the LEDiL way.

- LX K8
- LX K12
- LX K16
- CXA15
- CXA25



HELENA-A
PMMA
H: 11 mm
D: 72,8 mm
Beam type: Medium



HELENA-B
PMMA/PC
H: 11 mm
D: 72,8 mm
Beam type: Medium

RGB-MIXING

www.ledil.com/rgb

- LEDiL patented technology
- Proprietary and patented microstructured surfaces

Typical applications:

- RGBX for stage lighting and architectural applications
- Adaptive color temperature
- Perfect CRI



LZ4 RGB
MC-E
MC-E RGB
XM-L RGB
Ostar-SMT RGB
PS



ANGELINA-RZ-S

PC / PC
H: 31 mm
D: 82 mm
Beam type: Spot
FWHM: 26°



ANGELA-RZ-W

PC / PC
H: 74,5 mm
D: 119,5 mm
Beam type: Wide
FWHM: 31°



GERI-RZ

PMMA/PC
H: 32,8 mm
D: 45 x 45 mm
Beam type: Wide
FWHM: 31°



RITA-A-RZ

Hyper Reflective PC
H: ≈19 mm
D: 35,1 x 28,9 mm
Beam type: Asymm.



RITA-WAS-RZ

Hyper Reflective PC
H: ≈17 mm
D: 31,9 x 28,4 mm
Beam type: Asymm.



REBECCA

PMMA / PC
H: 29,9 mm
D: 42 mm



MIRELLA-RZL

PC / PC
D: 49,9 mm
H: 25,8 mm
Beam types: -S, -M, -W, -XW

Code	Typ. FWHM	Typ. eff.	Typ. cd/lm
RGBX-M	30	70	TBA
RGBX-0	48+25	70	TBA
RGBX-SS	20	85	3,8
RGBX-HLD	TBA	TBA	TBA
RGBX2-M	34	68	1,5
RGBX2-0	48+24	66	1,5
RGBX2-S	20	77	4,6
ANGELA-RZ-S	10	90	11,0
ANGELA-RZ-M	18	84	3,0
ANGELA-RZ-W	38	83	1,4
ANGELA-RZ-XW	72	89	0,6
ANGELINA-RZ-S	25	89	1,8
ANGELINA-RZ-M	37	89	1,3
ANGELINA-RZ-W	54	89	1,0
ANGELINA-RZ-XW	TBA	TBA	TBA
REBECCA-RZ-WW	TBA	TBA	TBA

FWHM angles, efficiencies and cd/lm values contained herein are typical values. Actual measured values depend of the specific LED/ optic combination. Go to www.ledil.com for LED specific values and optical datasheets.

SAGA

www.ledil.com/saga

SAGA-HB-IP-WHT

Silicone
H: 12 mm
D: 50 mm
Beam type: HighBay
Typical FWHM: 62°



CLL01x
CLL02x
CLL03x
CXA1304
CXA1816
CXA15
Vero10
BXR A E5 S
V10
CXM-6
CXM-7
CXM-9
Soleriq P6
Soleriq P9
Soleriq S13
Mini Zenigata
LTP-L-M036

- TIR lens in optical grade silicone
- Precision-molded frame in Hyper-Reflective White PC
- Zhaga compliant fastening with two M3 screws 35 mm apart
- Average optical efficiency of 92 %

STELLA

www.ledil.com/stella

STELLA-A

Silicone
H: 22 mm
D: 90 mm
Beam type:
Asymmetric



CLL03x
CLL04x
CLL05x
LX K12
LX K16
LX CoB1208
CXA15
CXA25
CXA30
CXA35
CXA1816
Vero13
Vero18
Vero29
CXM-18
Soleriq S19
Soleriq S13
Mega Zenigata
LTP-L-M074

- Self-sealing design simplifies luminaire design
- Very good thermal and UV-resistance
- Average optical efficiency of 92%
- STELLA-A street lighting lens featuring Type II / Type III light distribution depending on LES size
- STELLA-HB for warehouse and outdoor applications, works with COB's up to LES size 50

STELLA-HB

Silicone
H: 19,5 mm, D: 90 mm
Typical FWHM: 77°
Beam type: High Bay



JENNY

www.ledil.com/products

Cost effective silicone lens family designed for high power multi-crystal and COB LEDs. Can be installed with glue or optional holder.

JENNY-8X1-CY

Silicone
H: 11,5 mm
D: 280 x 35 mm
Typ. efficiency: 94%
Beam type:
Wide area lighting



JENNY-HLD-A-BLK

PC
H: 5 mm
D: 34.8 x 50 mm



JENNY-CY

Silicone
H: 11,5 mm, D: 35 x 35 mm
Typical efficiency: 94%
Beam type:
Wide area lighting



CLL01x
CLL02x
CXA1304
CXA1310
CXA15
CXA1520
MK-R
MK-6
XMH-EZW
LX M
NSMx286M
Mini Zenigata
V6
V8

EMERALD

www.ledil.com/emerald

Cost effective and new one-LED, one-optic solution for exit route lighting. With EMERALD's extremely wide beam distribution it's possible to achieve EN 1838 compliant lighting for installation height to distance ratios up to and beyond 1:7. Extended illumination range and single LED design reduces costs of the fixture and installation significantly.

EMERALD-A

PMMA
H: 7,3 mm
D: 21,6 mm
Beam type: Rectangular
Typical FWHM: 150° x 20°



- H35C0
- H35B0
- XB-D
- XI-E
- XM-L
- XM-L2
- XP-E
- XP-E2
- XP-G
- XP-G2
- OsSa EC
- OsSa PC
- OsSa SL150
- OsSa SL180
- Z5
- LX A
- LX M
- LX M Z
- LX Rebel
- LX Rebel ES
- LX T
- LX R
- NCsxx19A
- NVsx19A
- NS9x383

DOROTHY

www.ledil.com/dorothy

DOROTHY is an array of 4 side-emitting optics. It is designed for wide area lighting applications, especially anti-panic area lights.

DOROTHY-4-A

PMMA
H: 4,5 mm
D: 50,6 mm
Beam type: Wide area



- XP-E
- XP-E2
- XP-G
- XT-E
- XP-G2
- LX A
- LX R
- LX Rebel
- LX Rebel ES
- LX Z ES
- NCsxx19A
- NCsxx19B
- NVsx19A
- NVsx19B

Code	Beam Type	Typ. FWHM	Typ. eff.	Typ. cd/lm
DOROTHY-4-A	Wide area	152	94	0,3
DOROTHY-4-B	Side-Emitting	TBA	TBA	TBA

LOTTA-A

www.ledil.com/products



LOTTA-A

PMMA
H: 3,6 mm
D: 19,6 + 15,4 mm
Beam type:
Wide area lighting

LOTTA is designed especially for wide-area and backlighting applications. This lens shares the mechanical design of LEDiL's classic single STRADA family. LOTTA is design to provide good uniformity over wide areas optimized for Philips Lumileds' Luxeon LEDs.

VENLA-IRIS

www.ledil.com/venla

VENLA-S-IRIS complements LEDiL's VENLA optics family by featuring one of the tightest spot beams available for Philips Lumileds' Luxeon S.



VENLA-S-IRIS

PMMA / PC
H: 27,2 mm
D: 45 mm
Beam type: Spot

- LX S
- LX M
- SSM-80
- XM-L
- XM-L2

OONA-A

www.ledil.com/products

OONA-A

PMMA
H: 4,5 mm
D: 9,9 x 9,9 mm
Beam type: Oval



- OsSa EC
- OsSa PC

FWHM angles, efficiencies and cd/lm values contained herein are typical values. Actual measured values depend of the specific LED/ optic combination. Go to www.ledil.com for LED specific values and optical datasheets.

Specialty products / Reflectors

SOPHIE

www.ledil.com/products

SOPHIE

PMMA

H: 10,4 mm

D: 150 mm

Beam type: Asymmetric



XP-G
XT-E
XP-E
XB-D
OsIq PC
OsI SSL80
OsI SSL150
DurisS5
NF2x75/A
NCSxx19A
NVsxx19A
NVsxx19B
LX Rebel
LX Rebel ES
LXT
LXR

SOPHIE linear optic is an excellent choice for backlighting and shelf lighting applications. It's asymmetric beam provides uniform illumination when installed inside the shelf - making your goods look great.

XB-D
XP-E2
XP-G
XP-G2
LXA
LX Rebel
OsIq TEC
NCSxx19A
HBS CO

EMMA

www.ledil.com/products



EMMA-A

PMMA

H: 5,7 mm

D: 9,9 x 9,9 mm

Beam type:
Side emitter

STRADA-S

www.ledil.com/products



STRADA-S

PMMA

H: 6,9 mm

D: 19,6 x 15,5 mm

Beam type:
Side emitter



STRADA-S-14

PMMA

H: 6,5 mm

D: 19,6 x 13,8 mm

Beam type:
Side emitter

LXA
LX Rebel
LX Rebel ES
LXZ ES
NCSxx19A
NVsxx19A
HBS CO
OsIq TEC
OsI SSL150
OsI SSL80
Double Dome
XB-D
XP-E
XP-G
ZS

MINNIE

www.ledil.com/minnie

Available with or without holder. Diameter 35 mm (32,4 mm without holder), typical height ≈15 mm.



MINNIE-LT-M

PC

H: 15,6 mm

D: 35 mm

Beam type:
Medium



MINNIE-LT-W

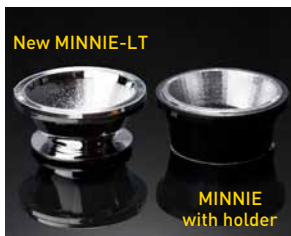
PC

H: 15,6 mm

D: 35 mm

Beam type:
Wide

Code	Typ. FWHM	Typ. eff.	Typ. cd/lm
MINNIE-M	24	72	2,6
MINNIE-W	33	76	2
MINNIE-WWW	69	91	0,9
MINNIE-XW	90	92	0,5
MINNIE-LT-M	21	92	2
MINNIE-LT-W	29	92	2



CXA15
MG-E
MG-G
MG-G2
MKR
LXM
LXM Z
NSI 6x286M
SSM-80

The information contained herein is the property of LEDIL Oy, Satorankatu 10, FI-24240 SALO, Finland, and is subject to change without prior notice. Please visit www.ledil.com for additional information, such as the latest photometric files, 3D mechanical models, and application notes relating to handling, gluing and taping.

BOOM

www.ledil.com/boom



BOOM-S

Metallized PC
H: ≈14 mm
D: 22,2 mm
Beam type: Spot



BOOM-M

Metallized PC
H: ≈14 mm
D: 22,2 mm
Beam type: Medium

MC-E
XRE
LX-M
LX-MZ
AX321
P7

Code	Typ. FWHM	Typ. cd/lm
BOOM-M	32	1,9
BOOM-S	18	3,6
BOOM-W	55	1,1
BOOM-XW	70	0,67



BOOM-XW

Hyper Reflective PC
H: ≈14 mm
D: 22,2 mm
Beam type: Extra² W

CXA15
NSBxL110
BXRA ES-3
CL-L233
CL-L02x
CL-L251

BRIDGET / LILY / CINDY

www.ledil.com/products

Mini Zenigata
SST-50
SST-90
Soleriq P6
Soleriq P9
LTPL-M036



-S

Metallized PC
H: 12,8 mm
D: 22,6 mm
Beam type: Spot



-M

Metallized PC
H: 12,8 mm
D: 22,6 mm
Beam type: Medium

Code	Typ. FWHM	Typ. eff.	Typ. cd/lm
-M	41	87	1,5
-S	31	89	1,5
-W	57	88	1,1
BRIDGET-S-UNI	44	85	1,0
BRIDGET-M-UNI	52	84	1,1
BRIDGET-W-UNI	61	87	1,0

BOOMERANG

www.ledil.com/boomerang

Ostar
LZ1100xW00
LZ4100xW00



BOOMERANG

Metallized PC
H: ≈14 mm
D: 22,2 mm
Beam type: Spot

TYRA / TYRA2 / TYRA3

www.ledil.com/tyra



TYRA-S

Metallized PC
H: 23,1 mm
D: 40 mm
Beam type: Spot

CL-L233
MP-L
NSBxL110

Code	Typ. FWHM	Typ. cd/lm
-M	32	90
-S	20	89
-W	47	91
-WW	64	90



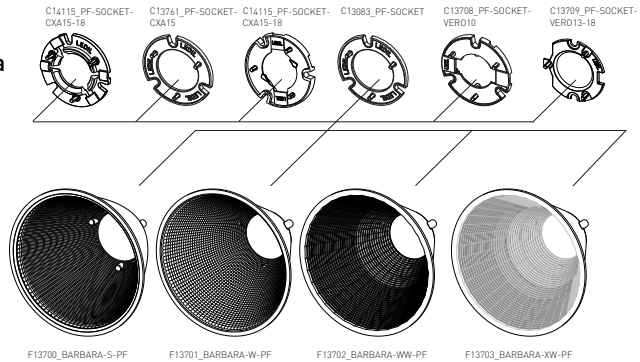
TYRA3-WW

Metallized PC
H: 22,5 mm
D: 40 mm
Beam type: Extra wide

FWHM angles, efficiencies and cd/lm values contained herein are typical values. Actual measured values depend of the specific LED/optic combination. Go to www.ledil.com for LED specific values and optical datasheets.

BARBARA

www.ledil.com/barbara



BRXA ES R
 Vero10
 Vero13
 Vero18
 CXA1816
 CXA2011
 CXA15
 COB-10W
 COB-13W
 COB-17W
 COB-24W
 CL-L330
 CLL05X
 NSBxL110
 NSBxL066A
 NSBxL121A
 NSCxJ216A
 S-SLE-P G3 LES17
 Soloriq P6
 Soloriq P9
 LTPL-M036

Code	LED	Typ. FWHM	Typ. eff.
BARBARA-S		17	90
BARBARA-S-PF		TBA	TBA
BARBARA-S-PF	CXA15	21	86
BARBARA-S-PF	VERO10	21	88
BARBARA-S-PF	VERO13/18	22	91
BARBARA-W-PF		TBA	TBA
BARBARA-W-PF	CXA15	24	85
BARBARA-W-PF	VERO10	29	78
BARBARA-W-PF	VERO13/18	45	92
BARBARA-WW-PF		TBA	TBA
BARBARA-WW-PF	CXA15	64	84
BARBARA-WW-PF	VERO10	68	77
BARBARA-WW-PF	VERO13/18	58	91
BARBARA-XW		75	90
BARBARA-XW-PF		74	91
BARBARA-XW-PF	VERO13/18	72	93



BARBARA-XW

Hyper Reflective PC
 H: 44,7 mm
 D: 70 mm
 Beam type: Extra² W



BARBARA-S

Metallized PC
 H: 44,7 mm
 D: 70 mm
 Beam type: Spot

RITA

www.ledil.com/rita

The RITA family of wall-washing reflectors have gained a new colour mixing versions, RITA-WAS-RZ and RITA-A-RZ, compatible with a range of RGBW LEDs. Colour washing has never been easier.



Os35a EC
 Os35sL150
 Os35s180
 Os35-SMT RGB
 LX M
 LX H50-2
 LX M
 LX MZ
 LX Rebel
 LX Rebel ES
 LX T
 LX Z RGB
 XM-B
 XBP
 XM-L
 XM-L 2
 XTE
 XPE
 XP-G
 XP-G2
 NS9x383
 NCSxx19A
 NVSxx19A
 NVSxx19B
 ZS

BROOKE

www.ledil.com/brooke



BROOKE-S

Metallized PC
H: 20,1 mm
D: 45 mm
Beam type: Spot



BROOKE-W

Metallized PC
H: 21,1 mm
D: 45 mm
Beam type: Wide

BROOKE-SCR-M

Metallized PC
H: 20,2 mm
D: 45 mm

Beam type: Medium



BXRA ES R
BXRA ES S
Vero10
CL103X
CL1230
CL1330
CXA2011

Code	Typ. FWHM	Typ. eff.	Typ. cd/lm
BROOKE-S	24	94	
BROOKE-M	28	92	2,2
BROOKE-SCR-M	24	91	2,5
BROOKE-SCR-W	42	91	1,2
BROOKE-W	46	92	1,24
BROOKE-XW	TBA	TBA	TBA
BROOKE-SOCKET-VERO10	Socket to position and hold BRX Vero10		

VENLA

www.ledil.com/venla

VENLA-WW

Metallized PC
H: 25 mm, D: 45 mm
Beam type: Extra wide



LX M Z
LX S
SSM-80
XM-L
XM-L2

Code	Typ. FWHM	Typ. eff.
C11773 VENLA-S	13	TBA
C11775 VENLA-M	28	90
C11776 VENLA-W	45	TBA
C11777 VENLA-WW	56	87
CP12090 VENLA-S-IRIS	18	93

BRITNEY

www.ledil.com/britney



BRITNEY-M

Metallized PC
H: 38,4 mm
D: 70 mm
Beam type: Medium
FWHM: 28°



BRITNEY-W

Metallized PC
H: 38,4 mm
D: 70 mm
Beam type: Wide
FWHM: 48°

BRITNEY-XW

Hyper Reflective PC
H: 38,4 mm, D: 70 mm
Beam type: Extra² Wide
FWHM: 74°



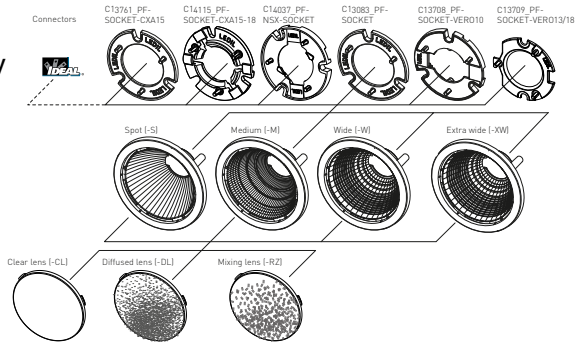
BXRA RS

FWHM angles, efficiencies and cd/lm values contained herein are typical values. Actual measured values depend of the specific LED/optic combination. Go to www.ledil.com for LED specific values and optical datasheets.

MIRELLA

www.ledil.com/mirellafamily

- Manufactured from impact-resistant, UL 94 V-2 rated, polycarbonate
- Available with an optional clear, diffusing or mixing lens, molded from PMMA
- Optimized for use with larger single-die lighting class LEDs and COB array LEDs



- COB-4W
- CXA1304
- CXA15
- CXA1816
- MKR
- MT-G
- MT-G2
- XML
- XML2
- XML RGB
- XP-G
- XP-G2
- XP-E
- XP-E-M036
- NSX3-066A
- NSX3-121A
- NSX2JC16A
- NSX1036A
- NSX5x19A
- NS9x383
- Duris58
- Oslon EC
- Ostar L+
- Ostar-SMT RGB
- Soleriq P6
- Soleriq P9
- Soleriq S13
- BXRA ES S
- BXRA LS
- SM4
- Verio10
- Verio13
- Verio18
- CL101X
- CL102X
- Mini Zenigata
- LX A
- LX M
- LX M2
- LX S
- LX CoB1203
- LX K4
- LX Z RGB
- S-SLE-P G3 LESTO
- CXM-6
- CXM-7
- CXM-9
- ZC6



MIRELLA-50-S-PF

Metallized PC
H: 24 mm
D: 49,9 mm
Beam type: Spot



MIRELLA-50-M-PF

Metallized PC
H: 24,8 mm
D: 49,9 mm
Beam type: Medium



MIRELLA-50-W-DL-PF

Metallized PC / PC
H: 25,5 mm
D: 49,9 mm
Beam type: Wide



CN13905_MIRELLA-50-S-PF-RZ

Metallized PC / PC
H: 24,8 mm
D: 49,9 mm
Beam type: Spot

Code	Typ. FWHM	Typ. Eff.	Typ. cd/lm	Fastening
MIRELLA-50-M	27	90	2,8	glue
MIRELLA-50-M-CL				glue
MIRELLA-50-M-CL-PF	30	87	2,5	socket, screw
MIRELLA-50-M-DL	34	84	1,9	glue
MIRELLA-50-M-DL-PF	30	85	2,3	socket, screw
MIRELLA-50-M-PF	32	88	1,9	socket, screw
MIRELLA-50-M-PF-RZL	38	81	1,5	socket, screw
MIRELLA-50-M-PF-VERO10	28	85	2,2	socket, screw
MIRELLA-50-M-PF-VERO13/18	34	88	1,8	socket, screw
MIRELLA-50-M-PIN	23	86	3,2	pin
MIRELLA-50-M-PIN-CL	26	84	2,5	pin
MIRELLA-50-M-PIN-DL	34	80	1,6	pin
MIRELLA-50-M-PIN-RZL	34	83	1,6	pin
MIRELLA-50-M-RZL				glue
MIRELLA-50-S	15	92	8,5	glue
MIRELLA-50-S-CL-PF	16	84	6,0	socket, screw
MIRELLA-50-S-DL	20	85	4,9	glue
MIRELLA-50-S-DL-PF	17	84	4,3	socket, screw
MIRELLA-50-S-PF	17	88	5,4	socket, screw
MIRELLA-50-S-PF-RZL	22	82	3,1	socket, screw
MIRELLA-50-S-PF-VERO10	20	88		socket, screw
MIRELLA-50-S-PF-VERO13/18	25	89	2,5	socket, screw
MIRELLA-50-S-PIN	11	87	12,3	pin
MIRELLA-50-S-PIN-DL	15,3	82	5,5	pin
MIRELLA-50-S-PIN-RZL	18	83	3,4	pin
MIRELLA-50-S-RZL				glue
MIRELLA-50-W	41	90	1,6	glue
MIRELLA-50-W-CL	46	84	1,3	glue
MIRELLA-50-W-CL-PF	46	85	1,3	socket, screw
MIRELLA-50-W-DL	47	83	1,2	glue
MIRELLA-50-W-DL-PF	45	85	1,3	socket, screw
MIRELLA-50-W-PF	43	87	1,3	socket, screw
MIRELLA-50-W-PF-RZL	47	81	1,2	socket, screw
MIRELLA-50-W-PF-VERO10	41	85	1,5	socket, screw
MIRELLA-50-W-PF-VERO13/18				socket, screw
MIRELLA-50-W-PIN	33	86	1,6	pin
MIRELLA-50-W-PIN-CL	44	84	1,4	pin
MIRELLA-50-W-PIN-DL	47	81	1,2	pin
MIRELLA-50-W-PIN-RZL	48	81	1,1	pin
MIRELLA-50-W-RZL				glue
MIRELLA-50-XW	80	93	0,6	glue
MIRELLA-50-XW-PF	78	92	0,6	socket, screw
MIRELLA-50-XW-PF-VERO10	74	92	0,6	socket, screw

ANGELA / ANGELINA

www.ledil.com/products

Code	Beam type	Diameter	Height	Typ. FWHM	Typ. Eff.	Typ. cd/lm
ANGELA-S	Spot	119,5	79,3	25	89	3,2
ANGELA-M	Medium	119,5	79,3	32	89	2,5
ANGELA-W	Wide	119,5	74,5	46	89	1,4
ANGELA-XW	Wide	119,5	74,5	TBA	TBA	TBA
ANGELA-XW-B	Wide	119,5	74,5	36	93	2,1

ANGELINA-S	Spot	82	31	39	90	1,2
ANGELINA-M	Medium	82	31	32	92	1,6
ANGELINA-W	Wide	82	31	47	92	1,1
ANGELINA-RZ-S	Spot	82	31	31	88	1,4
ANGELINA-RZ-M	Medium	82	31	TBA	TBA	TBA
ANGELINA-RZ-W	Wide	82	31	TBA	TBA	TBA
ANGELINA-XW	Wide	82	31	91	93	0,46
ANGELINA-XW-B	Wide	82	31	91	94	0,53
ANGELINA-M-B	Medium	82	31	39	91	1,3
ANGELINA-W-B	Wide	82	31	51	91	1,0

SOLDERLESS CONNECTORS:



LEDiL Clamps:



Cree



Bridgelux



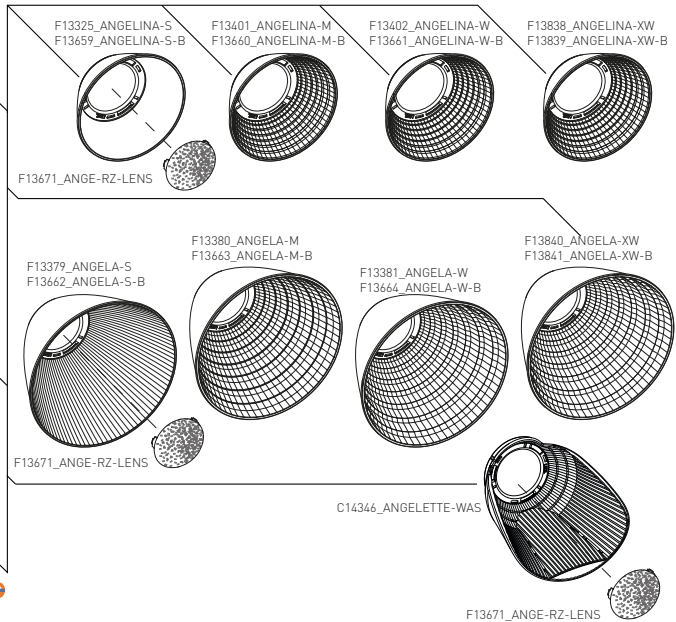
Bridgelux



Philips Lumileds



ZHAGA Book3



- COB-10W
- COB-13W
- COB-17W
- COB-24W
- BXRA ES R
- Vero13
- Vero18
- Vero29
- CXA15
- CXA1520
- CXA1816
- CXA25
- CXA30
- CXA35
- PRL C AC LEP2000
- PRL C AC LEP800
- PRL C Z3 LES19
- PRL C Z3 LES23
- PRL C Z3 LES9
- PRL C Z4 LES19
- Soleriq E30
- Soleriq S13
- Soleriq S19
- Mega Zenigata
- Tiger Zenigata
- CLL02x
- CLL03x
- CLL04x
- F-SLM 2000 G3
- F-SLM 3000 G3
- F-SLM 4500 G3
- LX CoB1208
- LX CoB1204/1205
- LX K12
- LX K16
- LX S2000
- LX S3000
- LX S5000
- NSB-L21A
- NSC-KJ216A
- LC0260/LC040B
- CXM-M14
- LPL-M074
- S-SLE G2 LES19
- S-SLE G2 LES23
- S-SLE G2 LES26
- S-SLE G3 LES19
- S-SLE G3 LES23
- WU-M-461
- WU-M-462
- WU-M-464
- WU-M-484
- WU-M-485
- WU-M-486
- ZC25/40

FWHM angles, efficiencies and cd/lm values contained herein are typical values. Actual measured values depend of the specific LED/ optic combination. Go to www.ledil.com for LED specific values and optical datasheets.

ANGELETTE-WAS

www.ledil.com/products

ANGELETTE-WAS a wall-washer that uniquely utilizes the efficiency of COB's in wall washing, providing a heretofore unseen uniformity and light pattern quality.

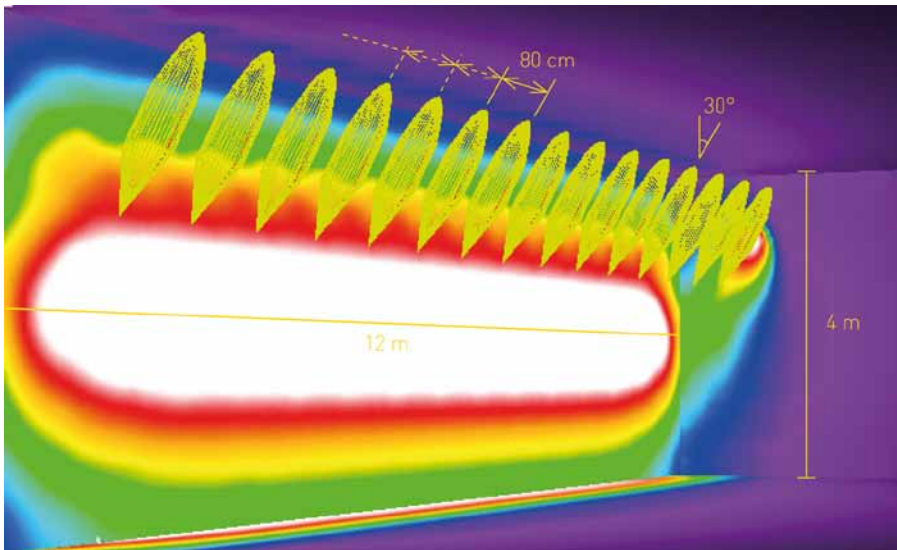
ANGELETTE-WAS

H: 84 mm
D: 97,2 x 83,4 mm
Efficiency: 92%
Beam type: Asymm.

NEW!



CXA1830
CXA25
LX S2000
LX S3000
LX S5000
Vero13
Vero18
Vero29



TYPICAL APPLICATION OF ANGELETTE-WAS

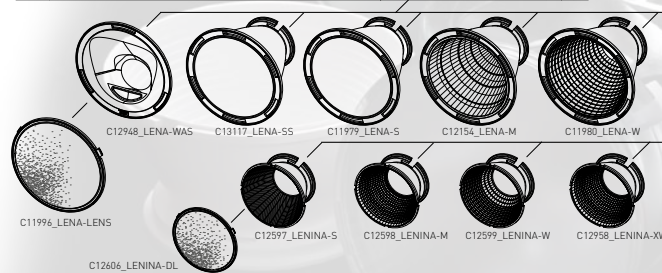
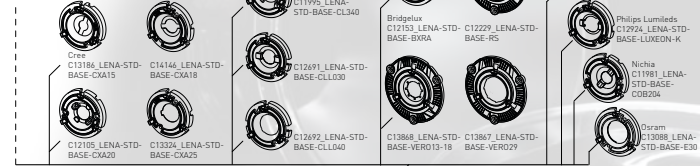
- Ceiling height 4 m, wall width 12m, 15 luminaires installed on a track suspended 20 cm lower
- Track installed 1.5 m distance from the wall
- Distance between luminaires 80 cm
- Luminaire flux with each luminaire 4000 lm
Eav: 755 lx, Emax: 1340 lx, U0: 0.1614

One system,
endless possibilities

SOLDERLESS CONNECTORS:

Tyden

LEDiL base parts:



- CXA15
- CXA1520
- CXA1816
- CXA2011
- CXA25
- NSCj216A
- NSBxL110
- NSBxL121A
- COB204
- SoLeriq E30
- BXRA ES R
- V10
- Vero13
- Vero18
- Vero29
- CL1340
- CLL03x
- CLL04x
- LX K12
- LX K16
- LX CoB 1204/1205
- LX CoB 1208
- Meqa Zenigata
- ZC1218
- ZC25/40
- LTP-LM036
- S-SLE-P G3 LES17

LENA

www.ledil.com/lenafamily

Code	Beam type	Diameter	Height	Typ. FWHM	Typ. Eff.	Typ. cd/lm
LENA-M	M	111	86	22	83	2,5
LENA-M-DL	M	111	87	22	77	3,4
LENA-S	S	111	86	11	85	7,6
LENA-S-DL	S	111	87	14	80	5,6
LENA-SS	SS	111	86	18	82	5
LENA-SS-DL	SS	111	87	16	74	5
LENA-W	W	111	86	46	82	1,3
LENA-WAS	WAS	111	37	Asym	82	1,1
LENA-WAS-DL	WAS	111	41,2	Asym	76	0,86
LENA-W-DL	W	111	87	45	75	1,3
LENA-X-WAS	WAS	111	37	Asym	87	
LENA-X-WAS-DL	WAS	111	42	Asym	80	

LENINA

www.ledil.com/leninafamily

Code	Beam type	Diameter	Height	Typ. FWHM	Typ. Eff.	Typ. cd/lm
LENINA-M	M	74	46	31	87	2,1
LENINA-M-DL	M	74	48	35	80	1,6
LENINA-S	S	74	46	19	88	4,5
LENINA-S-DL	S	74	48	23	81	3,1
LENINA-W	W	74	46	53	87	1,1
LENINA-W-DL	W	74	48	54	80	1
LENINA-XW	XW	74	46	73	89	0,6
LENINA-XW-DL	WWW	74	48	68	82	0,6

FWHM angles, efficiencies and cd/lm values contained herein are typical values. Actual measured values depend of the specific LED/ optic combination. Go to www.ledil.com for LED specific values and optical datasheets.

Multi-lens arrays

SATU

www.ledil.com/satu



SATU-M

3 LEDs
PMMA
H: 8,9 mm
D: 21,8 mm
Beam type: Medium



SATU-0

3 LEDs, PMMA
H: 8,9 mm, D: 21,8 mm
Beam type: Oval

H35C0
H35B0
XP-G XB-D
XP-G2
XT-E
XP-E XP-E2
OsLSL150
OsLSL80
OsSqr EC
NCsxx19A
NF2x757A
NVsxx19A
NVsxx19B
LXA LXT
LX Rebel
LX Rebel ES
LXH50-2
Double Dome
Z5

Code	Typ. FWHM	Typ. eff.	Typ. cd/lm
SATU-M	27	91	2,9
SATU-0	42 x 22	86	2,5
SATU-S	19	90	4,9
SATU-W	33	86	1,9

CUTE

www.ledil.com/cute

Code	Beam type	LEDs	Diameter	Height	Typ. FWHM	Typ. eff.	Typ. cd/lm
CUTE-3-M	M	3	35	15	24	88	3,8
CUTE-3-S	S	3	35	15	11		
CUTE-3-SS	SS	3	35	15	12	90	11,3
CUTE-3-W	W	3	35	15	39	83	1,6
CUTE-3-WW	WW	3	35	15	TBA	TBA	TBA
CUTE-4-M	M	4	35	15	22	84	4,26
CUTE-4-SS	SS	4	35	15	11	88	13,2
CUTE-4-W	W	4	35	15	38		



MX-3 MX-G
XM-L XM-L2
XM-L HWV
XP-E XT-E
XR-E XP-L
XP-G XP-G2
XT-E HWV
Z5 Z5-M1
OsSqr EC Pbr
OsLSL150
OsLSL80
NCsxx19A
NCsxx19B
NVsxx19A
NS3x33 NS5x33
Cer 3535 H35C1
LXA LXT
LX Rebel
LX Rebel ES
LXH50-2
Double Dome

GT3

www.ledil.com/gt3

Name	Beam type	Diameter	Height	Typ. FWHM	Typ. eff.	Typ. cd/lm
GT3-M	M	35	9	30	89	2,2
GT3-S	S	35	9	18	90	4,5
GT3-W	W	35	9	40	88	1,6
GT3-WW	WW	35	9	47	90	1,1



GT3-M

3 LEDs
PMMA
H: 9 mm
D: 35 mm
Beam type: Medium



GT3-WW

3 LEDs
PMMA
H: 9 mm
D: 35 mm
Beam type: Extra wide

LXA
LX Rebel
LX Rebel ES
LXT
OsSqr EC
OsLSL150
OsLSL80
XB-D
XP-E
XP-G
NCsxx19A
NVsxx19A
Double Dome
Z5

GT4

www.ledil.com/gt4

Name	Beam	Diameter	Height	Typ. FWHM	Typ. Eff	Typ. cd/lm
GT4-M	M	35	9	28	88	2,5
GT4-S	S	35	9	21	90	3,3
GT4-W	W	35	9	38	89	1,7
GT4-WW	WW	35	9	53	90	1,1



LXA
LX Rebel
LX Rebel ES
LXT
OsLSL150
OsLSL80
XB-D
XP-E
XP-G
NCsxx19A
NVsxx19A
Double Dome
Z5

The information contained herein is the property of LEDIL Oy, Satorankatu 10, FI-24240 SALO, Finland, and is subject to change without prior notice. Please visit www.ledil.com for additional information, such as the latest photometric files, 3D mechanical models, and application notes relating to handling, gluing and taping.

ANNA

www.ledil.com/anna

One of LEDiL's largest lens array family and most popular product families. ANNA family is versatile with optics in two diameters, wide selection of beam angles and sources.

ANNA-50-5-S



- Cer 3535
- H35CO
- OsSg EC
- OsSg PC
- Ostar L+L
- Ostar-SMT RGB
- SFH 47155 (IR)
- OsSSL150
- OsSSL80
- DuoS55
- MLE
- XB D
- XM-L
- XM-L2
- XP-E
- XP-E2
- XP-G
- XP-G2
- XT-E
- LX-A
- LX Rebel
- LX Rebel E5
- LX R
- LX T
- LX PWT
- Double Dome
- 107
- NCsxx19A
- NF2x757A
- NSW157I
- NS9x153
- NS9x383
- NVsx19A
- LH351A(3535)
- SM4
- Z5
- Z5 M

Name	Beam type	LED sources	D	H	Typ. FWHM	Typ. efficiency	Typ. cd/lm
ANNA-40-3-M	M	3	40	10,7	22	88	3,7
ANNA-40-4-M		4					
ANNA-40-5-M		5					
ANNA-40-6-M		6					
ANNA-40-7-M		7					
ANNA-50-3-M		3	50				
ANNA-50-4-M		4					
ANNA-50-5-M	5						
ANNA-50-6-M	6						
ANNA-50-7-M	7						
ANNA-40-7-M2	M	7	40	10,7	25	87	3,2
ANNA-40-3-S	S	3	40	10,7	15	91	8,5
ANNA-40-4-S		4					
ANNA-40-5-S		5					
ANNA-40-6-S		6					
ANNA-40-7-S		7					
ANNA-50-3-S		3	50				
ANNA-50-4-S		4					
ANNA-50-5-S	5						
ANNA-50-6-S	6						
ANNA-50-7-S	7						
ANNA-40-7-S-PC	S	7	40	10,7	15	85	TBA
ANNA-40-3-W	W	3	40	10,7	32	86	1,9
ANNA-40-4-W		4					
ANNA-40-5-W		5					
ANNA-40-6-W		6					
ANNA-40-7-W		7					
ANNA-50-3-W		3	50				
ANNA-50-4-W		4					
ANNA-50-5-W	5						
ANNA-50-6-W	6						
ANNA-50-7-W	7						
ANNA-40-7-WW	WW	6	40	12,5	64	90	0,9



ANNA-50-3-S

D: 50 mm
3 LEDs
PMMA
Beam type: Spot



ANNA-40-4-S

D: 40 mm
4 LEDs
PMMA
Beam type: Spot



ANNA-40-3-M

D: 40 mm
3 LEDs
PMMA
Beam type: Medium

FWHM angles, efficiencies and cd/lm values contained herein are typical values. Actual measured values depend of the specific LED/optic combination. Go to www.ledil.com for LED specific values and optical datasheets.

Multi-lens arrays

ANGIE

www.ledil.com/angie

ANGIE-S

D: 34 mm
H: 10,7 mm
4 LEDs
PMMA
Beam type: Spot



XP-E
XP-G
LX H50-2
LX T
LX Rebel
LX Rebel E5
Os1 SSL80
Os1 SSL150
Os5g EC
Z5

Name	Beam type	Typ. FWHM	Typ. eff.	Typ. cd/lm
ANGIE-S	S	12	93	11,8
ANGIE-M	M	19	89	6,2
ANGIE-M2	M2	26	88	3,3
ANGIE-W	W	29	84	2,4

TAMPA

www.ledil.com/tampa

NIS83-MX-7-M

D: 38 mm
7 LEDs
PMMA
Beam type: Medium



MX-6
LX A
LX Rebel
LX Rebel E5
NIS3x83
NIS6x83
O1 P-x050F01

Name	Beam type	Height	Typ. FWHM	Typ. eff.
NIS83-MX-7-M	M	11,4	20	90
NIS83-MX-7-MD	MD	11,4	22	91
NIS83-MX-7-W	W	11,4	37	89
NIS83-MX-7-WW	WW	11,4	57	87
RER-7-MD	MD	10,6	33	85
RER-7-S	S	10,6	19	89
RER-7-W	W	10,6	41	82
RER-7-WW	WW	10,6	53	90

PENTA

www.ledil.com/penta



PENTA-5-M

D: 35,5 mm
5 LEDs
PMMA
Beam type: Medium



Double Dome
GDr+
LX Rebel
MX-6
XP-E
XP-G
NIS3x36
NIS6x83
Z5

Name	Beam type	LEDs	Height	FWHM
NIS83-MX-5-W	W	5	6,8	36
PENTA-5-M	M	5	7,2	30
RER-5-M	M	5	6,8	28

NIS83-MX-5-W

D: 35,5 mm, 5 LEDs, PMMA
Beam type: Wide

QUAK

www.ledil.com/quak

NIS83-MX-4-M

D: 50 mm
4 LEDs
PMMA
Beam type: Medium



MX-6
NIS3x83
NIS6x83

Name	Beam	FWHM
NIS83-MX-4-SS	SS	15
NIS83-MX-4-M	M	21
NIS83-MX-4-W	W	49

The information contained herein is the property of LEDiL Oy, Satorankatu 10, FI-24240 SALO, Finland, and is subject to change without prior notice. Please visit www.ledil.com for additional information, such as the latest photometric files, 3D mechanical models, and application notes relating to handling, gluing and taping.

MELODY

www.ledil.com/melody

MELODY-3-M

D: 50,6 mm
H: 11,9 mm
3 LEDs
PMMA

Beam type: Medium

Name	Beam type	LEDs	Typ. FWHM	Typ. eff.	Typ. cd/ lm
MELODY-4-M	M	4	29	89	2,8
MELODY-3-M	M	3	34	92	2,1
MELODY-4-S	S	4	12	89	14,8



XP-E | XP-E2
XP-G | XP-G2
XT-E | XB-D
LX-A
LX-R
LX-H50-2
LX-T
LX-Rebel
LX-Rebel ES
LX-ZS
NCsxx19A
NCsxx19B
NVsxx19A
NVsxx19B
OsS5L180
OsS5L150
OsS5 EC
Double Dome
Z5 | Z5 M

DOLLY

www.ledil.com/dolly

Name	Beam type	LEDs	D	H	FWHM
APOLLO-3-S	S	3	50	19,4	10
LAIKA-3-S	S	3	50	20,4	10
TITANUM-3-S	S	3	50	18,4	15
TITANUM-3-M	M	3	50	19,9	30
LAIKA-3-M	M	3	50	20,4	28



GDr+
LX-K2
P4

TUIJA

www.ledil.com/tuija

Name	Beam type	LEDs	D	H	Typ. FWHM	Typ. Efficiency	Typ. cd/lm
TUIJA-3-M	M	3	50	14,5	16	84	5,6
TUIJA-3-M2	M	3	50	14,5	35	87	2
TUIJA-3-SS	SS	3	50	14,5	12	90	12,9
TUIJA-3-W	W	3	50	14,5	53	86	0,9



XB-D
XP-E
XP-G
LX-A
LX-Rebel
LX-Rebel ES
OsS5L150
OsS5L180
OsS5 EC
NCsxx19A
NVsxx19A
Double Dome
Z5

MARTHA

www.ledil.com/martha

PLATINUMROCKET-3-SS

D: 50 mm
3 LEDs
PMMA

Beam type: Smooth spot

Name	Beam type	LEDs	D	Typ. H	Typ. FWHM
APOLLO-LAIKA-3-W	W	3	50	17	49
NIS83-MX-3-W	W	3	50	15	48
PLATINUMROCKET-3-W	w	3	50	16	43
PLATINUMROCKET-3-SS	SS	3	50	16	14
PLATINUMROCKET-3-M	M	3	50	16	20
NIS83-MX-3-M	M	3	50	16	22



GDr+
LX-K2
MX-6
XR-E
NISxx83
P4

FWHM angles, efficiencies and cd/lm values contained herein are typical values. Actual measured values depend of the specific LED/ optic combination. Go to www.ledil.com for LED specific values and optical datasheets.

Multi-lens arrays

SANDRA

www.ledil.com/sandra



SANDRA-M

D: 67 mm
H: 11,1 mm
12 LEDs
PMMA
Beam type: Medium



SANDRA-S

D: 67 mm
H: 11,1 mm
12 LEDs
PMMA
Beam type: Spot

NEW!



SANDRA-O

D: 67 mm
H: 11,1 mm
12 LEDs
PMMA
Beam type: Oval

Name	Beam type	Typ. FWHM	Typ. eff.	Typ. cd/lm
SANDRA-12-M	M	28	88	2,4
SANDRA-12-W	W	31	88	2,4
SANDRA-12-S	S	14	91	13,2
SANDRA-12-O	O	45+20	90	TBA

XP-E
XP-E2
XP-G
XP-G2
XT-E
OSLSSL150
OSLSSL80
OSLSSL60
LX Rebel
LX Rebel ES
Duo Rebel Dome
NVSxx19A
NF2x757A
NVSxx19A
Z5

XB-D
XP-G
XT-E
XP-E2
XP-G2
ML-E
XH-B/G
DuraPS
DuraS5
OSLSSL60
LX Rebel ES
NF2x757A
NVSxx19A
LG-3030
LM231 A/B

VIRPI

www.ledil.com/virpifamily



VIRPI-M

D: 74,9 x 74,9 mm
H: 9,4 mm
25 LEDs
PMMA
Beam type: Medium
Typical FWHM: 29°
Typical cd/lm: 2,7



VIRPI-S

D: 74,9 x 74,9 mm
H: 9,4 mm
25 LEDs
PMMA
Beam type: Spot
Typical FWHM: 15°
Typical cd/lm: 7,5



VIRPI-W

D: 74,9 x 74,9 mm
H: 9,4 mm
25 LEDs
PMMA
Beam type: Wide
Typical FWHM: 42°
Typical cd/lm: 1,6

EMY

www.ledil.com/emy



EMY-S

D: 50 mm
H: 14,4 mm
6 LEDs
PMMA
Beam type: Smooth spot

MX-G
NVSxxB3
NVSxx19A

PETUNIA

www.ledil.com/petunifamily



PETUNIA

D: 29,5 x 46,5 mm H: 7,4 mm
12 LEDs PMMA
Typ. FWHM: 29°, Typ. eff: 91%

SOLUTION FOR PLANT LIGHTING

- A special lens for deep red, deep blue and white OSRAM OSLOON LEDs
- Smooth mixing of colours at a short distance resulting in a uniform growing light for plants
- PCB available with the right spread of colours
- Control algorithm for switching on / off white and coloured LEDs



OSLSSL150
XB-D
XP-E
XP-G
XT-E
NVSxx19A

The information contained herein is the property of LEDIL Oy, Salorankatu 10, FI-24240 SALO, Finland, and is subject to change without prior notice. Please visit www.ledil.com for additional information, such as the latest photometric files, 3D mechanical models, and application notes relating to handling, gluing and taping.

FLORENCE

www.ledil.com/florence



FLORENCE-Z60

D: 286 x 61 mm
H: 8.5 mm
33 LEDs
PMMA

Name	Beam type	Typ. FWHM	Typ. eff.	Typ. cd/lm
FLORENCE-Z30	M	TBA	TBA	TBA
FLORENCE-Z60	W	58	88	0,8
FLORENCE-Z90	WWW	92	86	0,4
FLORENCE-ZT25	Asymmetric	TBA	94	0,6

FLORENCE-ZT25

D: 286 x 61 mm
H: 11 mm
33 LEDs
PMMA



XH-B/G
XP-G
Duris E5
Duris P5
Duris S5
NF2x757D
LG5630
LG6030
LM231 A/B
LM362A
LM561B
5630
LX3535

FLORENCE-1R

www.ledil.com/products

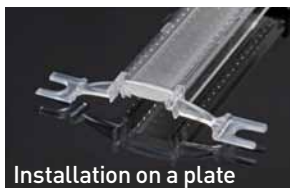


FLORENCE-1R-ZT25

D: 19,5 x 286 mm
H: 7,1 mm
PMMA

FLORENCE-1R-CLIP-A

D: 63,5 x 9 mm
H: 8,4 mm
PC



Installation on a plate

LG5630
NCSxx19B
NF2x757A
XB-H
XP-E
XP-E2
XP-G
XO-E
LX Rebel ES
LXT



FLORENCE-1R-Z90

D: 19,5 x 286 mm
H: 7 mm
PMMA

FLORENCE-1R-CLIP-B

PC



Profile installation

Name	Beam type	Typ. FWHM	Typ. eff.	Typ. cd/lm
FLORENCE-1R-Z90	WWW	90 + 110	94	0,4
FLORENCE-1R-Z60	M	TBA	TBA	TBA
FLORENCE-1R-ZT25	Asymmetric	TBA	86	TBA
FLORENCE-1R-O	Oval	TBA	TBA	TBA
FLORENCE-1R-MAXI-WG	Asymmetric	TBA	90	TBA
FLORENCE-1R-CLIP-A	Clip for installation on a plate			
FLORENCE-1R-CLIP-B	Clip for installation on a profile			

FWHM angles, efficiencies and cd/lm values contained herein are typical values. Actual measured values depend of the specific LED/optic combination. Go to www.ledil.com for LED specific values and optical datasheets.

Multi-lens arrays

SHELLY

www.ledil.com/shelly



SHELLY-T-6X1-WAS

D: 119,8 x 19,6 mm
H: 7,6 mm
6 LEDs
PMMA

SHELLY-T-6X1-N

D: 119,8 x 19,6 mm
H: 7 mm
6 LEDs
PMMA



DurisS5
LX Rebel
LX Rebel ES
LX T
LX Z ES
NC5xx19A
NC5xx19B
NF2x757A
NF2x757D
NV5xx19A
NV5xx19B
XB-D
XC-D
XC-E

Name	Beam type	Typ. eff.	Typ. cd/lm
SHELLY-N	Asymmetric	94	0,5
SHELLY-WAS	Asymmetric	94	1,0

ZENIA

www.ledil.com/products

ZENIA optics are designed to illuminate the backdrop inside the shelves. Also suited for wall-washing and stair lighting applications. Linear optics that work with any distance between the mid-power LEDs. Modular breakable design at 15 mm intervals allows installation to any width. Designed to be installed as such or into an aluminium profile.

ZENIA

D: 16,2 x 119,8 mm
H: 5,97 mm
PMMA



Duris E5

VANESSA

www.ledil.com/vanessafamily

Name	Beam type	Typ. FWHM	Typ. eff.
VANESSA-M	Medium	26	89
VANESSA-O	Oval	42+19°	82
VANESSA-S	Spot	17	90
VANESSA-B-O	Oval	45+21°	88
VANESSA-B-S	Spot	22	93
VANESSA-B-W	Wide	37	92



LG5630
LX A
LX Rebel ES
XP-E
XP-G
XP-G2
XT-E
NF2x757A
OsdSq EC

VANESSA-B-O

The information contained herein is the property of LEDIL Oy, Satorankatu 10, FI-24240 SALO, Finland, and is subject to change without prior notice. Please visit www.ledil.com for additional information, such as the latest photometric files, 3D mechanical models, and application notes relating to handling, gluing and taping.

ZOWIE

www.ledil.com/zowie

Spot or Wide – Take Both

Three revolutionary products featuring efficient zoom from spot to wide beams. Ideal choice for applications that benefit from adjustability and a compact optical system.

- LX A
- LX M
- LX Rebel ES
- LX S
- LX Z RGB
- MT-G2
- XB-D
- XM-L
- XP-E
- XP-G
- XP-G2
- XT-E
- OsStar EC
- OsStar-SMT RGB
- NVSxx19A
- NVSxx19E
- LZ4(00xW00)



ZOWIE-MINI

D: 14,8 mm
PMMA
Beam type: Zoom
Available with
optional multi-holder

ZOWIE-MIDI-RZ

D: 35 mm
PMMA
Beam type: Zoom



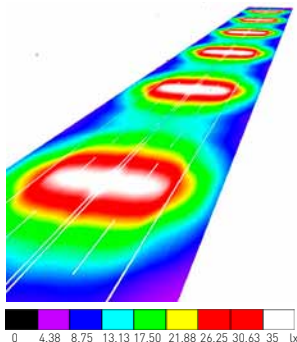
Name	Diameter	Beam type	Typ. FWHM
ZOWIE-MAXI	65	Zoom	TBA
ZOWIE-MIDI-RZ	35	Zoom	TBA
ZOWIE-MINI	14,8	Zoom	24-60

TATIANA

www.ledil.com/tatiana

- Designed especially to meet Russian street lighting standards.
- Module can be snapped into four single lenses which enable upgrading old lighting fixtures and gives more freedom when designing the fixture.
- Designed for lighting fixtures with 15° mounting angle.
- Suitable also for wire-mounted catenary luminaires.

- NVSxx19A
- OsStar EC
- XM-L2
- XP-G2
- XT-E



DESIGN EXAMPLE

Luminous flux (Luminaire): 9404 lm
Luminous flux (Lamps): 9800 lm
Luminaire Wattage: 90 W
Arrangement: Double row, opposing
Pole Distance: 40 m
Mounting Height: 12 m
Height: 12 m
Overhang: 0.853 m
Boom Length: 1.5 m

Maximum luminous intensities
at 70°: 447 cd/klm
at 80°: 36 cd/klm
at 90°: 11 cd/klm



TATIANA-1X4-B

D: 102x25 mm
H: 7,7 mm
Typ. FWHM: °
Typ. eff: 94%
PMMA
LEDs: 4

FWHM angles, efficiencies and cd/lm values contained herein are typical values. Actual measured values depend of the specific LED/ optic combination. Go to www.ledil.com for LED specific values and optical datasheets.

High Bay

www.ledil.com/
highbayfamily

MK-R
XB-D
XM-L
XM-L2
XP-E
XP-E2
XP-E-HEW
XP-G2
XP-G
XP-L
XP-E
MX-C
MX-C2
XM-H2W
XME
O3-5m-EC
O3-5m-PC
O3-SS180
O3-SS150
LX-A
LX-M
LX-M2
LX-Q
LX-Rebel
LX-Rebel ES
LX-R
LX-T
LX-H50-2
LX-Z ES
NC5x19A
NC5x19B
NF2x757A
NS6x33
NS9x33S
NS3x19A
NS5x19B
Double Dome
HB351A(3535)
O1-L-506516-06A
MLT-4040
Z5-M1
Z5
HB3C1

Name	LEDs	Diameter	Height	Typ. FWHM
STRADA-2X2-CY	4	50x50	7,8	127+127
HB-2X2-RS	4	50x50	10	10
HB-2X2-M	4	50x50	8,5	25
HB-2X2-O	4	50x50	10,6	TBA
HB-2X2-RW	4	50x50	8,5	51
HB-2X2-W	4	50x50	8,5	51
HB-2X2-WW	4	50x50	8,5	65
HB-5X1-FLAT-W	5	123 x 25	8,5	54
HB-5X1-W	5	123 x 25	9	56
HB-5X1-WW	5	123 x 25	9	TBA
HB-IP-2X6-W	12	173 x 71.4	11,4	58
HB-IP-2X6-WWW	12	173 x 71.4	11,4	98
HB-SQ-A	1	25 x 25	12,9	50



STRADA-2X2-CY
D: 50x50 mm
H: 7,8 mm
PMMA
Typ. eff: 94%



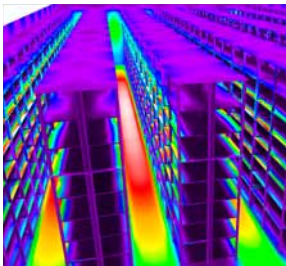
HB-IP-2X6-W
D: 173 x 71,4 mm
H: 11,4 mm
Typ. FWHM: 58°
Typ. eff: 94%
PMMA
LEDs: 12



HB-2X2-O
D: 50 x 50 mm
H: 10,6 mm
PMMA
Typ. eff: 94%
LEDs: 4
Oval beam type suitable for warehouse aisle lighting



HB-5X1-FLAT-W
D: 123 x 25 mm
H: 8,5 mm
PMMA
Typ. FWHM: 54°
Typ. eff: 91%
LEDs: 5



HB-2X2-O DESIGN EXAMPLE

- Luminaire installation height: 14 m
- Installed in the aisle centerline
- Fixture luminous flux 6200 lm
- LED luminous flux 7000 lm



HB-2X2-RW
D: 50x50 mm
H: 8,5 mm
PMMA
Typ. FWHM: 51°
Typ. eff: 89%
LEDs: 4



HB-SQ-A
D: 25 x 25 mm
H: 12,9 mm
PMMA
Typ. FWHM: 54°
Typ. eff: 86%

STRADA

www.ledil.com/strada

STRADA lenses, originally designed for street lighting applications, are suitable for many other applications as well.

Like all LEDiL products STRADA lenses are optimized for specific LED types and have optimal light distribution and over 90% optical efficiency. Some STRADA lenses can also be used with other LED types with a small sacrifice in light distribution and optical efficiency. STRADA lenses designated for roadway lighting have batwing light distribution for better performance.

Symmetric STRADA lenses were the first lenses from LEDiL designed especially for street lighting applications. On street lighting setups, symmetrical light distribution requires a mounting boom and tilt in the lamp head. This makes symmetrical STRADA lenses ideal for traditional street light replacement.

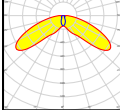
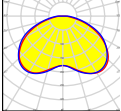
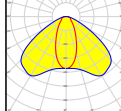
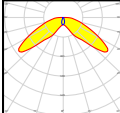

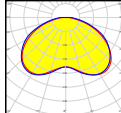
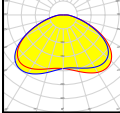
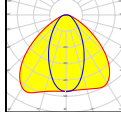
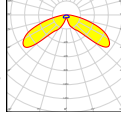


- StanleyJ
- StanleyJ
- CL-L400
- LH35TA(3535)
- LH35IB
- NCSxx19A
- NCSxx19B
- NS5x83
- NS5x83
- NS9x83
- NV5xx19A
- NV5xx19B
- Double Dome
- LX A
- LX H50-2
- LX M
- LX MZ
- LX O
- LX R
- LX Rebel
- LX Rebel ES
- LX T
- LX TX
- LX T5
- OLP5050FL
- OLP5050FL-06A
- GDH
- OSL1EC
- OSL1PC
- OSL150
- OSL180
- Ostar-SMT RGB

- MC-E
- MKR
- MKR2
- MT-G
- MX-3
- MX-6
- XB-D
- XB-H
- XM-F
- XM-F2
- XC-E
- XP-E
- XP-E2
- XP-E-HEW
- XP-G
- XP-G2
- XP-L
- XR-E
- XT-E
- XT-EHW
- MJT4040

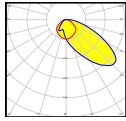
- Z5M1
- Z5M2
- Z5
- Z5B
- H35C0
- H35B0
- H35C1

Single optics

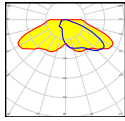
	STRADA-A D: 19,6 x 15,4 mm H: 10,8 mm PMMA Typ. FWHM: 80° x 146° Typ. eff: 92%		STRADA-C2 D: 19,6 x 15,6 mm H: 6,4 mm PMMA Typ. FWHM: 120° Typ. eff: 92%		STRADA-B D: 19,6 x 15,5 mm H: 6 mm PMMA Typ. FWHM: 105° x 44° Typ. eff: 93%
	STRADA-A2 D: 19,6 x 15,4 mm H: 10,6 mm PMMA Typ. FWHM: 72° x 141° Typ. eff: 92%		STRADA-B2 D: 19,6 x 15,5 mm H: 5,3 mm PMMA Typ. FWHM: 111° x 47° Typ. eff: 92%		STRADA-C D: 19,6 x 15,6 mm H: 5,3 mm PMMA Typ. FWHM: 125° Typ. eff: 92%
	STRADA-C2-CLIP D: 19,6 x 15,6 mm H: 6,9 mm PMMA Typ. eff: 92%		STRADA-DN D: 19,6 x 15,7 mm H: 5,9 mm PMMA Typ. FWHM: 107° x 58° Typ. eff: 92%		STRADA-DW D: 19,6 x 15,7 mm H: 9,6 mm PMMA Typ. FWHM: 89° x 142° Typ. eff: 92%

FWHM angles, efficiencies and cd/lm values contained herein are typical values. Actual measured values depend of the specific LED/optic combination. Go to www.ledil.com for LED specific values and optical datasheets.

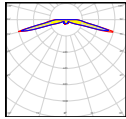
Street lighting



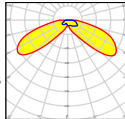
STRADA-FT
D: 19,6 x 15,4 mm
H: 8,3 mm
PMMA
Typ. eff: 91%



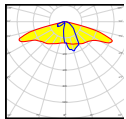
STRADA-FW
D: 19,6 x 15,5 mm
H: 10,9 mm
PMMA
Typ. eff: 92%



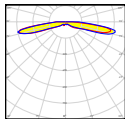
STRADA-S
D: 19,6 x 15,5 mm
H: 6,9 mm
PMMA
Typ. FWHM: 149° x 159°
Typ. eff: 93%



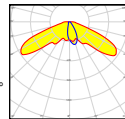
STRADA-T-DW-EP
D: 19,8 x 15,5 mm
H: 10,7 mm
PMMA
Typ. eff: 92%



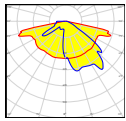
STRADA-SQ-T2
D: 25 x 25 mm
H: 8,5 mm
PMMA
Typ. eff: 90%



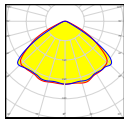
STRADA-S-14
D: 19,6 x 15,5 mm
H: 6,9 mm
PMMA
Typ. FWHM: 149° x 159°
Typ. eff: 93%



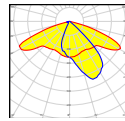
STRADA-K
D: 19,6 x 15,5 mm
H: 8,7 mm
PMMA
Typ. eff: 96%



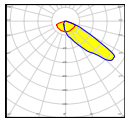
STRADA-SQ-T3
D: 25 x 25 mm
H: 8,5 mm
PMMA
Typ. eff: 90%



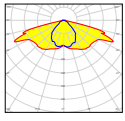
STRADA-SQ-CY
D: 25x25 mm
H: 10,1 mm
PMMA
Typ. eff: 94%



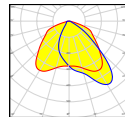
STRADA-SQ-A-T
D: 25 x 25 mm
H: 9,1 mm
PMMA
Typ. eff: 93%



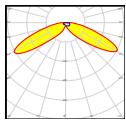
STRADA-SQ-FS
D: 25 x 25 mm
H: 12,3 mm
PMMA
Typ. eff: 93%



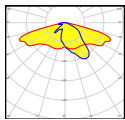
STRADA-SQ-FS2
D: 25 x 25 mm
H: 8,2 mm
PMMA
Typ. eff: 90%



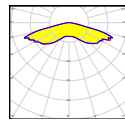
STRADA-SQ-T-DN
D: 25 x 25 mm
H: 8,5 mm
PMMA
Typ. eff: 90%



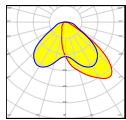
STRADA-SQ-T-DW
D: 25 x 25 mm
H: 11,4 mm
PMMA
Typ. eff: 91%



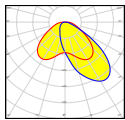
STRADA-SQ-T-DWC
D: 25 x 25 mm
H: 9,1 mm
PMMA
Typ. eff: 93%



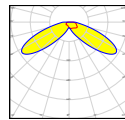
STRADA-SQ-VSM
D: 25 x 25 mm
H: 6,9 mm, PMMA
Typ. FWHM: 152°
Typ. eff: 93%



STRADA-T-DN
D: 19,8 x 15,5 mm
H: 8,9 mm
PMMA
Typ. eff: 92%



STRADA-T-DN-EP
D: 19,8 x 15,5 mm
H: 8,8 mm
PMMA
Typ. eff: 91%



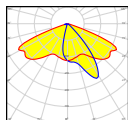
STRADA-T-DW
D: 19,8 x 15,5 mm
H: 10,8 mm
PMMA
Typ. eff: 93%

Name	Diameter	Height	Typ. eff.	Typ. FWHM
STRADA-SQ-FS-NP	25x25	12,4	TBA	TBA
STRADA-SQ-ME	25x25	8,6	TBA	TBA
STRADA-SQ-FT	25x25	12,5	TBA	TBA
STRADA-SQ-ME-NP	25x25	8,6	TBA	TBA
STRADA-SQ-T4	25x25	9,4	TBA	TBA
STRADA-SQ-FW	25x25	15,3	TBA	TBA
STRADA-SQ-T4-NP	25x25	9,4	TBA	TBA
STRADA-C2-NP	19,6 x 15,5	6,9	92,0	111

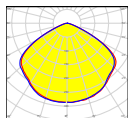
- Stanley3J
- Stanley6J
- CL-L400
- LH351A(83535)
- LH351B
- NC5xx19A
- NC5xx19B
- NS3xx33
- NS6xx33
- NS9xx33B
- NSVxx19A
- NSVxx19B
- Double Dome
- LX-A
- LX-H50-2
- LX-M
- LX-MZ
- LX-O
- LX-R
- LX-Rebel
- LX-Rebel ES
- LX-T
- LX-TX
- LX-ZE5
- OLP-3050R(FL)
- OLP-3055R(FL-OC)
- GFC-
- OsSoc EC
- OsSoc PC
- Os SSL150
- Os SSL80
- Ostar-SMT RGB
- MC-E
- MK-R
- MK-R2
- MT-G
- MX-3
- MX-6
- XB-D
- XBH
- XBH
- XBH2
- XO-E
- XP-E
- XP-E2
- XP-E-HEW
- XP-G
- XP-G2
- XP-L
- XP-E
- XP-E HW
- MJ14040
- Z5M1
- Z5M
- Z5
- Z5P
- H35C0
- H35B0
- H35C1

The information contained herein is the property of LEDIL Oy, Salorankatu 10, FI-24240 SALO, Finland, and is subject to change without prior notice. Please visit www.ledil.com for additional information, such as the latest photometric files, 3D mechanical models, and application notes relating to handling, gluing and taping.

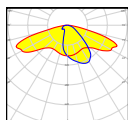
2x2 modules



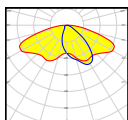
STRADA-2X2-A-T
D: 50 x 50 mm
H: 7,3 mm
PMMA
Typ. eff: 93%



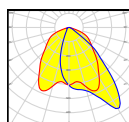
STRADA-2X2-CY
D: 50x50 mm
H: 7.8 mm
PMMA
Typ. eff: 94%



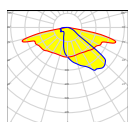
STRADA-2X2-DWC
D: 50 x 50 mm
H: 6 mm
PMMA
Typ. eff: 93%



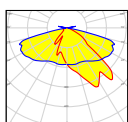
STRADA-2X2-DNW
D: 50 x 50 mm
H: 11 mm
PMMA
Typ. eff: 93%



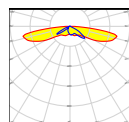
STRADA-2X2-DN
D: 50 x 50 mm
H: 8,05 mm
PMMA



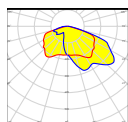
STRADA-2X2-ME
D: 50 x 50 mm
H: 8,2 mm
PMMA



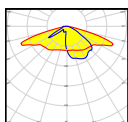
STRADA-2X2-ME-WIDE1
D: 50 x 50 mm
H: 8.3 mm
PMMA



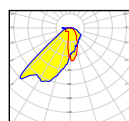
STRADA-2X2-XW
D: 50 x 50 mm
H: 7 mm
PMMA
Typ. eff: 94%



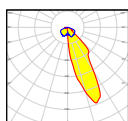
STRADA-2X2-T4
D: 50 x 50 mm
H: 7 mm
PMMA



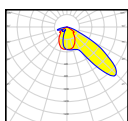
STRADA-2X2-T3
D: 50 x 50 mm
H: 7 mm
PMMA



STRADA-2X2-PX
D: 50 x 50 mm
H: 8 mm
PMMA



STRADA-2X2-NHS
D: 50 x 50 mm
H: 9,8 mm
PMMA



STRADA-2X2-FN
D: 50 x 50 mm
H: 10 mm
PMMA
Typ. eff: 94%

STRADA 6X1 modules

Precision-engineered lens array.

Emitted light has an asymmetric tilt in the wide beam to efficiently direct light to the roadway surface and to minimize stray light outside of target areas.



STRADA-6X1-DNW
D: 119,8 x 25,2 mm
H: 5,6 mm
Typ. efficiency: 93%



STRADA-6X1-DWC
D: 119,8 x 25,2 mm
H: 5,5 mm
Typ. efficiency: 94%



STRADA-IP 2X6 modules



STRADA-IP-2X6-DWC

D: 173 x 71,4 mm, H: 7,9 mm
Typ. efficiency: 96%

STRADA-IP-2X6-T2

D: 173 x 71,4 mm, H: 7,9 mm
Typ. efficiency: 96%

STRADA-IP-2X6-T3

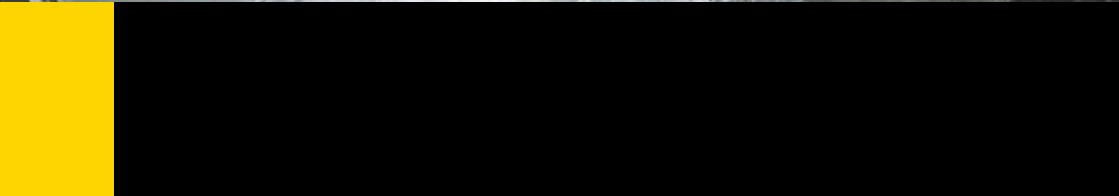
D: 173 x 71,4 mm, H: 7,9 mm
Typ. efficiency: 96%

STRADA-IP-2X6-ME

D: 173 x 71,4 mm, H: 7,9 mm
Typ. efficiency: 96%

This street lighting optic is designed for peak optical performance, ease of installation and protection from dirt and water. STRADA-IP-2X6-DWC is a precision-engineered 12-position lens array with a tilted beam to direct light efficiently to the roadway surface.

The integral silicone gasket protects up to IP67. The wide, asymmetric beam allows for rapid development of luminaires classified as IESNA Type II and III and related European and Russian street lighting classes.



Данный компонент на территории Российской Федерации

Вы можете приобрести в компании MosChip.

Для оперативного оформления запроса Вам необходимо перейти по данной ссылке:

<http://moschip.ru/get-element>

Вы можете разместить у нас заказ для любого Вашего проекта, будь то серийное производство или разработка единичного прибора.

В нашем ассортименте представлены ведущие мировые производители активных и пассивных электронных компонентов.

Нашей специализацией является поставка электронной компонентной базы двойного назначения, продукции таких производителей как XILINX, Intel (ex.ALTERA), Vicor, Microchip, Texas Instruments, Analog Devices, Mini-Circuits, Amphenol, Glenair.

Сотрудничество с глобальными дистрибьюторами электронных компонентов, предоставляет возможность заказывать и получать с международных складов практически любой перечень компонентов в оптимальные для Вас сроки.

На всех этапах разработки и производства наши партнеры могут получить квалифицированную поддержку опытных инженеров.

Система менеджмента качества компании отвечает требованиям в соответствии с ГОСТ Р ИСО 9001, ГОСТ РВ 0015-002 и ЭС РД 009

Офис по работе с юридическими лицами:

105318, г.Москва, ул.Щербаковская д.3, офис 1107, 1118, ДЦ «Щербаковский»

Телефон: +7 495 668-12-70 (многоканальный)

Факс: +7 495 668-12-70 (доб.304)

E-mail: info@moschip.ru

Skype отдела продаж:

moschip.ru

moschip.ru_4

moschip.ru_6

moschip.ru_9