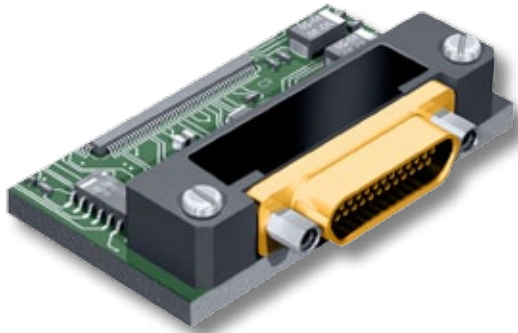




# Micro-D Metal Shell Printed Circuit Board Connectors BR Style Right Angle Thru-Hole



**High Performance**—These connectors feature gold-plated TwistPin contacts for best performance. PC tails are .020 inch diameter. Specify nickel-plated shells or cadmium plated shells for best availability.

**Solder-Dipped**—Terminals are coated with SN63/Pb37 tin-lead solder for best solderability. Optional gold-plated terminals are available for RoHS compliance.

**Front Panel or Rear Mountable**—Can be installed through panels up to .125 inch thick. Specify rear panel mount jackposts.

## HOW TO ORDER BR STYLE PCB MICRO-D CONNECTORS

| Series                    | Shell Material and Finish | Insulator Material                                     | Contact Layout   | Contact Type     | Termination Type            | Jackpost Option                      | Threaded Insert Option | Terminal Length In Inches           | Gold-Plated Terminal Mod Code  |      |
|---------------------------|---------------------------|--|------------------|------------------|-----------------------------|--------------------------------------|------------------------|-------------------------------------|--|------|
| MWDM                      | Aluminum Shell            | L – LCP<br><br>30% Glass-Filled Liquid Crystal Polymer | 9                | P<br>Pin         | BR<br><br>Board Right Angle | (Omit for None)                      | T                      | .080                                | These connectors are solder-dipped in 63/37 tin-lead solder.<br><br>To delete the solder dip and change to gold-plated terminals, add code 513 |      |
|                           | 1 – Cadmium               |  | 15               |                  |                             |                                      |                        | P – Jackpost                        |  | .110 |
|                           | 2 – Nickel                |  | 21               | S<br>Socket      |                             | Jackposts for Rear Panel Mounting    | (Omit for Thru-Hole)   | Threaded Insert In Board Mount Hole |  | .125 |
|                           | 4 – Black Anodize         |  | 25               |                  |                             |                                      |                        | .140                                |  |      |
|                           | 5 – Gold                  |  | 31               |                  |                             |                                      |                        | .150                                |  |      |
|                           | 6 – Chem Film             |  | 37               |                  |                             |                                      |                        | .172                                |  |      |
|                           | Stainless Steel Shell     | 3 – Passivated   | 51               | R1 – .032" Panel | .190                        | Length in Inches<br>± .015<br>(0.38) |                        |                                     |  |      |
|                           |                           |  | 100              | R2 – .047" Panel | .250                        |                                      |                        |                                     |  |      |
|                           |                           |  |                  | R3 – .062" Panel |                             |                                      |                        |                                     |  |      |
|                           |                           |  |                  | R4 – .093" Panel |                             |                                      |                        |                                     |  |      |
|                           |                           |  | R5 – .125" Panel |                  |                             |                                      |                        |                                     |  |      |
| <b>Sample Part Number</b> |                           |  |                  |                  |                             |                                      |                        |                                     |  |      |
| MWDM                      | 1                         | L  | - 15             | P                | BR                          | R3                                   |                        | - .110                              |  |      |

## MICRO-D JACKPOST OPTIONS

| No Designator   | P  | R1 Thru R5   |
|---|--|--|
| <p>HEX NUT<br/>EPOXY FILL</p>   |  | <p>Panel</p>   |
| <p><b>Thru-Hole</b><br/>For use with Glennair jackposts only. Order hardware separately. Install with threadlocking compound.</p> | <p><b>Standard Jackpost</b><br/>Factory installed, not intended for removal.</p> | <p><b>Jackpost for Rear Panel Mounting</b><br/>Shipped loosely installed. Install with permanent threadlocking compound.</p> |

# Micro-D Metal Shell Printed Circuit Board Connectors BR Style Right Angle Thru-Hole

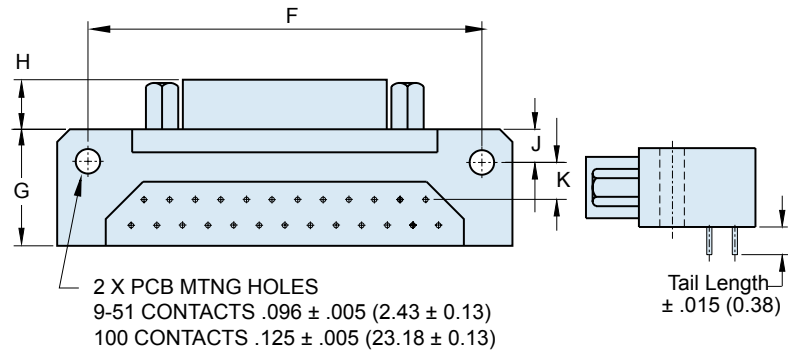
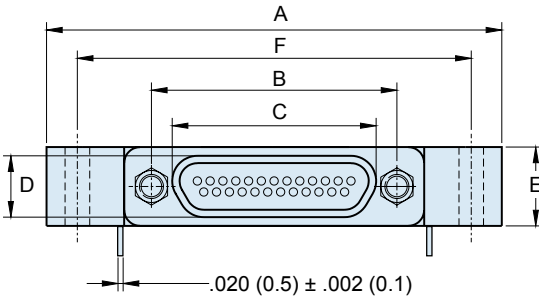


## PERFORMANCE SPECIFICATIONS

|                           |                               |
|---------------------------|-------------------------------|
| Current Rating            | 3 AMP                         |
| DWV                       | 600 VAC Sea level             |
| Insulation Resistance     | 5000 Megohms Minimum          |
| Contact Resistance        | 8 Milliohms Maximum           |
| Low Level Contact Resist. | 32 Milliohms Maximum          |
| Magnetic Permeability     | 2 μ Maximum                   |
| Operating Temperature     | -55° C. to +150° C.           |
| Shock, Vibration          | 50 g., 20g.                   |
| Mating Force              | (10 Ounces) X (# of Contacts) |

## MATERIALS AND FINISHES

|                  |   |
|------------------|---|
| Connector Shell  | Aluminum Alloy 6061 or Stainless Steel, 300 Series, passivated. See Ordering Info for Plating Options |
| Insulator, Tray  | Liquid Crystal Polymer (LCP)  |
| Interfacial Seal | Fluorosilicone Rubber, Blue   |
| Pin Contact      | Copper Alloy, Gold over Nickel Plating  |
| Socket Contact   | Copper Alloy, Gold Over Nickel Plating  |
| PCB Terminals    | Gold Plated Copper Alloy, Solder Dipped   |
| Hardware         | 300 Series Stainless Steel  |
| Encapsulant      | Epoxy Resin Hysol EE4215  |

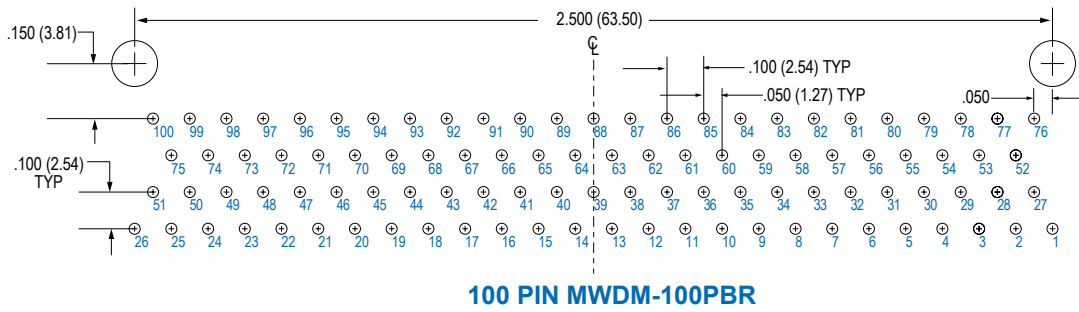
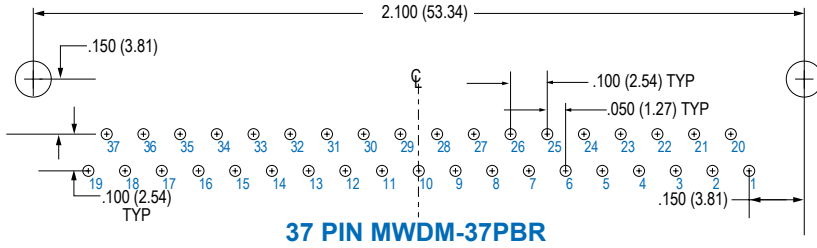
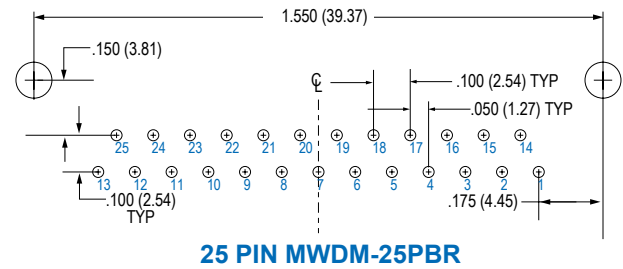
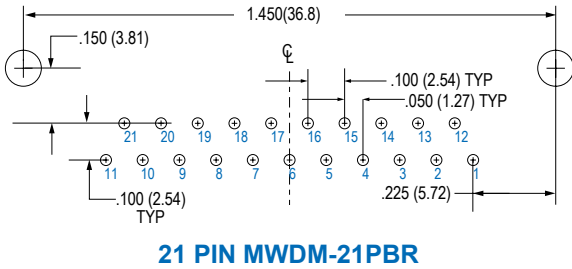
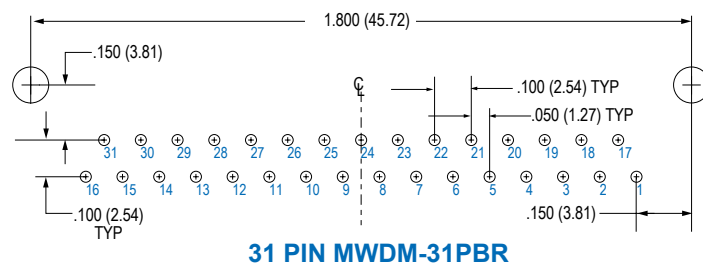
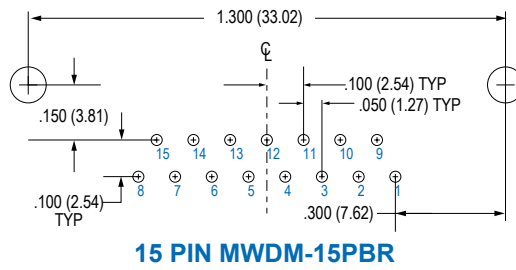
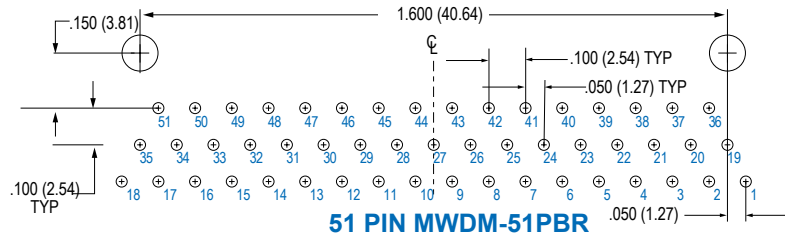
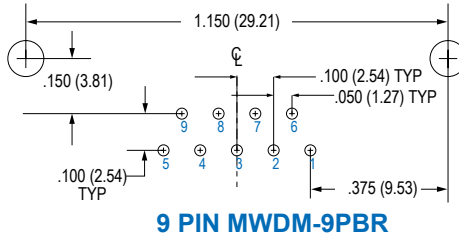


## BR STYLE MICRO-D PCB CONNECTORS

| Layout | A Max. |       | B         |           | C Max. |       | D Max. |      | E Max. |       | F         |           | G Max. |       | H         |           | J         |           | K         |           |
|--------|--------|-------|-----------|-----------|--------|-------|--------|------|--------|-------|-----------|-----------|--------|-------|-----------|-----------|-----------|-----------|-----------|-----------|
|        | In.    | mm.   | In. ±.003 | mm. ±.008 | In.    | mm.   | In.    | mm.  | In.    | mm.   | In. ±.007 | mm. ±.018 | In.    | mm.   | In. ±.003 | mm. ±.008 | In. ±.015 | mm. ±.038 | In. ±.010 | mm. ±.025 |
| 9P     | 1.390  | 35.31 | .565      | 14.35     | .333   | 8.46  | .184   | 4.67 | .310   | 7.87  | 1.150     | 29.21     | .465   | 11.81 | .183      | 4.65      | .125      | 3.18      | .150      | 3.81      |
| 9S     | 1.390  | 35.31 | .565      | 14.35     | .400   | 10.16 | .250   | 6.35 | .310   | 7.87  | 1.150     | 29.21     | .465   | 11.81 | .195      | 4.95      | .125      | 3.18      | .150      | 3.81      |
| 15P    | 1.540  | 39.12 | .715      | 18.16     | .483   | 12.27 | .184   | 4.67 | .310   | 7.87  | 1.300     | 33.02     | .465   | 11.81 | .183      | 4.65      | .125      | 3.18      | .150      | 3.81      |
| 15S    | 1.540  | 39.12 | .715      | 18.16     | .551   | 14.00 | .250   | 6.35 | .310   | 7.87  | 1.300     | 33.02     | .465   | 11.81 | .195      | 4.95      | .125      | 3.18      | .150      | 3.81      |
| 21P    | 1.690  | 42.93 | .865      | 21.97     | .633   | 16.08 | .184   | 4.67 | .310   | 7.87  | 1.450     | 36.83     | .465   | 11.81 | .183      | 4.65      | .125      | 3.18      | .150      | 3.81      |
| 21S    | 1.690  | 42.93 | .865      | 21.97     | .701   | 17.81 | .250   | 6.35 | .310   | 7.87  | 1.450     | 36.83     | .465   | 11.81 | .195      | 4.95      | .125      | 3.18      | .150      | 3.81      |
| 25P    | 1.790  | 45.47 | .965      | 24.51     | .733   | 18.62 | .184   | 4.67 | .310   | 7.87  | 1.550     | 39.37     | .465   | 11.81 | .183      | 4.65      | .125      | 3.18      | .150      | 3.81      |
| 25S    | 1.790  | 45.47 | .965      | 24.51     | .801   | 20.35 | .250   | 6.35 | .310   | 7.87  | 1.550     | 39.37     | .465   | 11.81 | .195      | 4.95      | .125      | 3.18      | .150      | 3.81      |
| 31P    | 2.040  | 51.82 | 1.115     | 28.32     | .883   | 22.43 | .184   | 4.67 | .310   | 7.87  | 1.800     | 45.72     | .465   | 11.81 | .183      | 4.65      | .125      | 3.18      | .150      | 3.81      |
| 31S    | 2.040  | 51.82 | 1.115     | 28.32     | .951   | 24.16 | .250   | 6.35 | .310   | 7.87  | 1.800     | 45.72     | .465   | 11.81 | .195      | 4.95      | .125      | 3.18      | .150      | 3.81      |
| 37P    | 2.340  | 59.44 | 1.265     | 32.13     | 1.033  | 26.24 | .184   | 4.67 | .310   | 7.87  | 2.100     | 53.34     | .465   | 11.81 | .183      | 4.65      | .125      | 3.18      | .150      | 3.81      |
| 37S    | 2.340  | 59.44 | 1.265     | 32.13     | 1.101  | 27.96 | .250   | 6.35 | .310   | 7.87  | 2.100     | 53.34     | .465   | 11.81 | .195      | 4.95      | .125      | 3.18      | .150      | 3.81      |
| 51P    | 1.875  | 47.63 | 1.215     | 30.86     | .983   | 24.97 | .228   | 5.79 | .351   | 8.92  | 1.600     | 40.64     | .565   | 14.35 | .183      | 4.65      | .125      | 3.18      | .150      | 3.81      |
| 51S    | 1.875  | 47.63 | 1.215     | 30.86     | 1.051  | 26.70 | .296   | 7.52 | .351   | 8.92  | 1.600     | 40.64     | .565   | 14.35 | .195      | 4.95      | .125      | 3.18      | .150      | 3.81      |
| 100P   | 2.780  | 70.60 | 1.800     | 45.72     | 1.383  | 35.13 | .270   | 6.86 | .394   | 10.01 | 2.500     | 63.50     | .765   | 19.43 | .183      | 4.65      | .225      | 5.72      | .150      | 3.81      |
| 100S   | 2.780  | 70.60 | 1.800     | 45.72     | 1.451  | 36.86 | .333   | 8.46 | .394   | 10.01 | 2.500     | 63.50     | .765   | 19.43 | .195      | 4.95      | .225      | 5.72      | .150      | 3.81      |

## MICRO-D BR BOARD MOUNT CONNECTOR PCB LAYOUTS – PIN CONNECTORS

Patterns shown are for connector mounting side of PC board. 9 Thru 51 Contacts .096 (2.44) Diameter Mounting Holes, 100 Pin .125 (3.18) Diameter

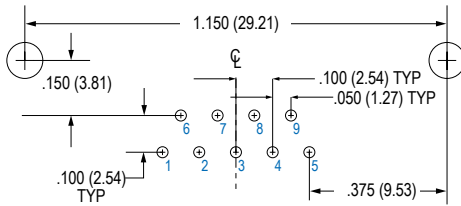


# Micro-D Metal Shell Printed Circuit Board Connectors BR Style Right Angle Thru-Hole

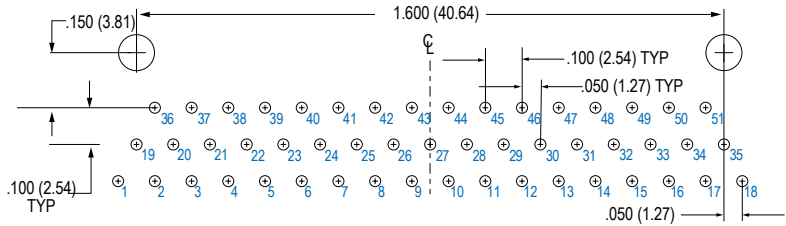


## MICRO-D BR BOARD MOUNT CONNECTOR PCB LAYOUTS – SOCKET CONNECTORS

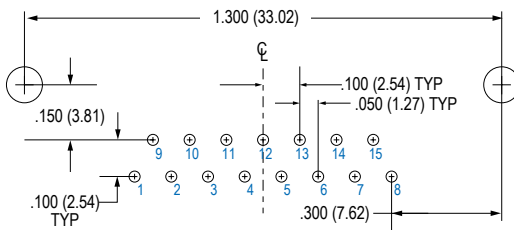
Patterns shown are for connector mounting side of PC board. 9 Thru 51 Contacts .096 (2.44) Diameter Mounting Holes, 100 Pin .125 (3.18) Diameter



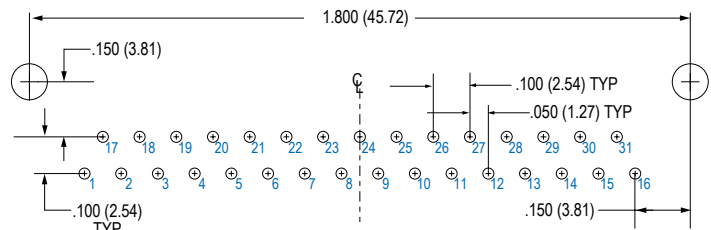
**9 SOCKET MWDM-9SBR**



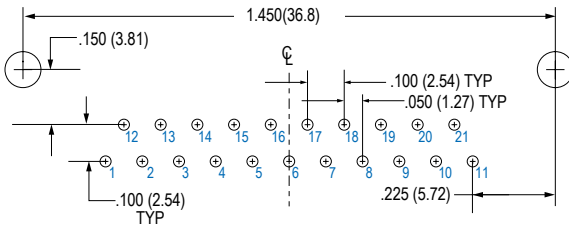
**51 SOCKET MWDM-51SBR**



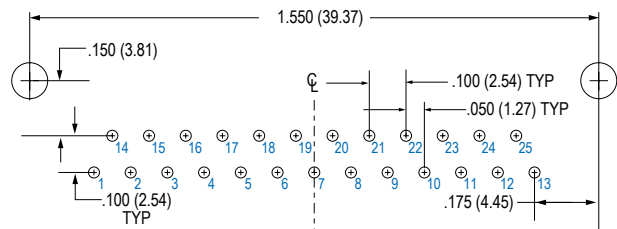
**15 SOCKET MWDM-15SBR**



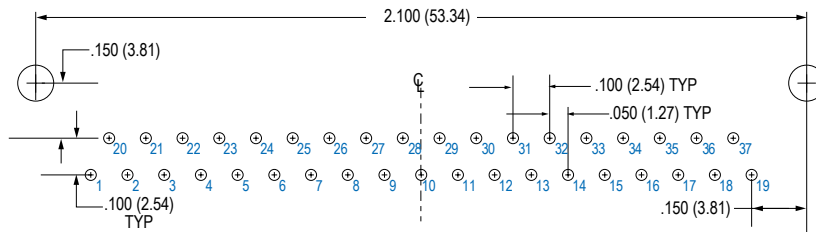
**31 SOCKET MWDM-31SBR**



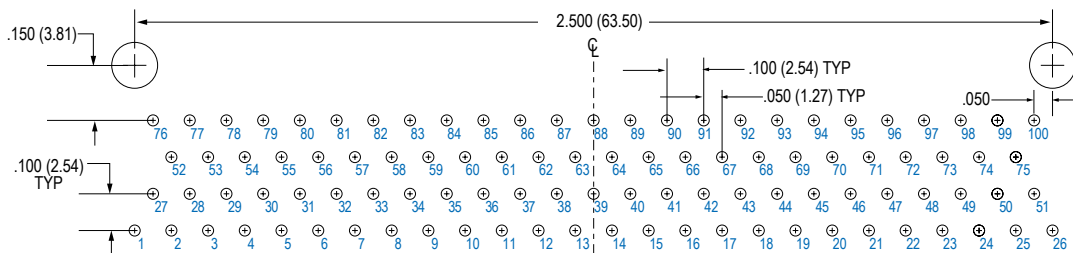
**21 SOCKET MWDM-21SBR**



**25 SOCKET MWDM-25SBR**



**37 SOCKET MWDM-37SBR**



**100 SOCKET MWDM-100SBR**

## Данный компонент на территории Российской Федерации

### Вы можете приобрести в компании MosChip.

Для оперативного оформления запроса Вам необходимо перейти по данной ссылке:

<http://moschip.ru/get-element>

Вы можете разместить у нас заказ для любого Вашего проекта, будь то серийное производство или разработка единичного прибора.

В нашем ассортименте представлены ведущие мировые производители активных и пассивных электронных компонентов.

Нашей специализацией является поставка электронной компонентной базы двойного назначения, продукции таких производителей как XILINX, Intel (ex.ALTERA), Vicor, Microchip, Texas Instruments, Analog Devices, Mini-Circuits, Amphenol, Glenair.

Сотрудничество с глобальными дистрибьюторами электронных компонентов, предоставляет возможность заказывать и получать с международных складов практически любой перечень компонентов в оптимальные для Вас сроки.

На всех этапах разработки и производства наши партнеры могут получить квалифицированную поддержку опытных инженеров.

Система менеджмента качества компании отвечает требованиям в соответствии с ГОСТ Р ИСО 9001, ГОСТ РВ 0015-002 и ЭС РД 009

### Офис по работе с юридическими лицами:

105318, г.Москва, ул.Щербаковская д.3, офис 1107, 1118, ДЦ «Щербаковский»

Телефон: +7 495 668-12-70 (многоканальный)

Факс: +7 495 668-12-70 (доб.304)

E-mail: [info@moschip.ru](mailto:info@moschip.ru)

Skype отдела продаж:

moschip.ru

moschip.ru\_4

moschip.ru\_6

moschip.ru\_9