

### Typical Applications

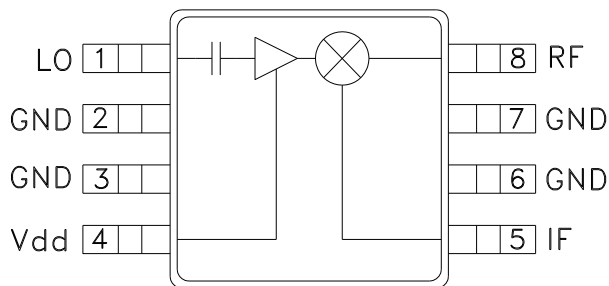
The HMC423MS8 / HMC423MS8E is ideal for:

- Base Stations
- Portable Wireless
- CATV/DBS
- ISM

### Features

- Integrated LO Amplifier w/ P<sub>diss</sub> <50 mW
- Conversion Loss / Noise Figure: 8 dB
- Low LO Drive: 0 dBm
- Input IP<sub>3</sub>: +15 dBm
- Single Positive Supply: 3V, 15 mA

### Functional Diagram



### General Description

The HMC423MS8 & HMC423MS8E are double balanced mixer ICs with integrated LO amplifiers. This mixer can operate as an upconverter or downconverter between 0.6 GHz and 1.3 GHz. With the integrated LO amplifier, the mixer requires an LO drive level of only 0 dBm, and requires only 15mA from a single positive +3V rail. The mixer has 8 dB of conversion loss, an input P<sub>1dB</sub> of +8 dBm and an input third order intercept point of +15 dBm at 1.3 GHz.

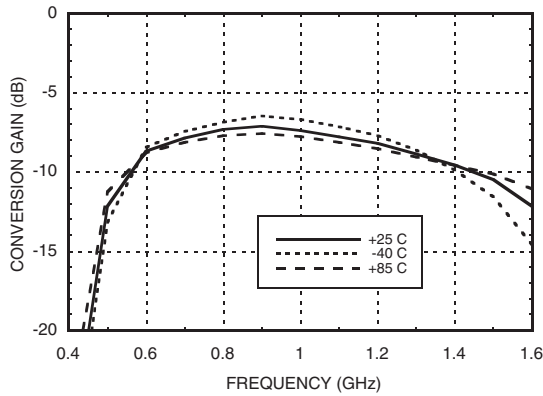
### Electrical Specifications, T<sub>A</sub> = +25° C

| Parameter                           | IF = 100 MHz<br>LO = 0 dBm, V <sub>dd</sub> = 3V |      |      | Units |
|-------------------------------------|--|------|------|-------|
|                                     | Min.   | Typ. | Max. |       |
| Frequency Range, RF & LO            | 0.6 - 1.3  |      |      | GHz   |
| Frequency Range, IF                 | DC - 0.4   |      |      | GHz   |
| Conversion Loss                     |  | 8    | 11   | dB    |
| Noise Figure (SSB)                  |  | 8    | 11   | dB    |
| LO to RF Isolation                  | 25   | 35   |      | dB    |
| LO to IF Isolation                  | 15   | 25   |      | dB    |
| RF to IF Isolation                  | 12   | 20   |      | dB    |
| IP <sub>3</sub> (Input)             | 13   | 15   |      | dBm   |
| 1 dB Compression (I <sub>dd</sub> ) | 6.5  | 8    |      | dBm   |
| Supply Current (I <sub>dd</sub> )   |  | 15   |      | mA    |

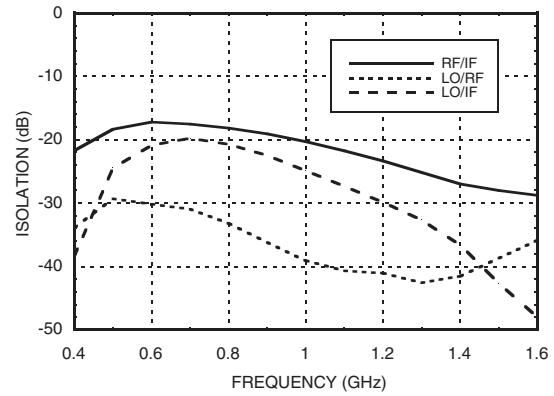
\* Unless otherwise noted, all measurements performed as downconverter, IF= 100 MHz.



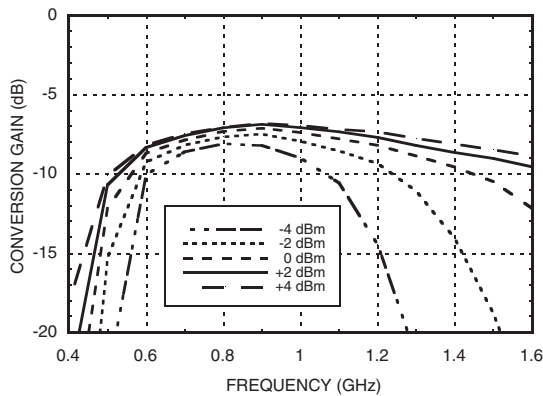
**Conversion Gain vs. Temperature @ LO = 0 dBm**



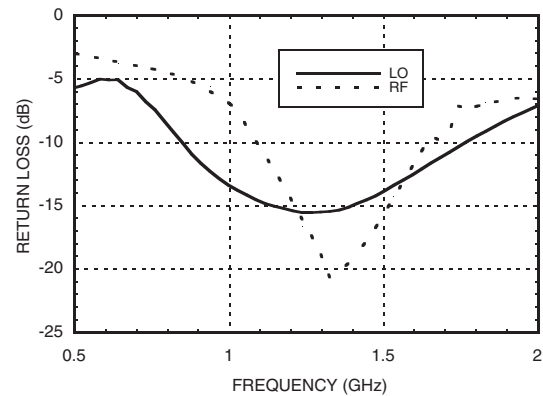
**Isolation @ LO = 0 dBm**



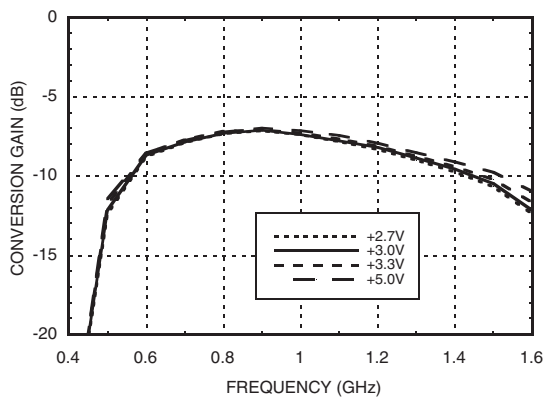
**Conversion Gain vs. LO Drive**



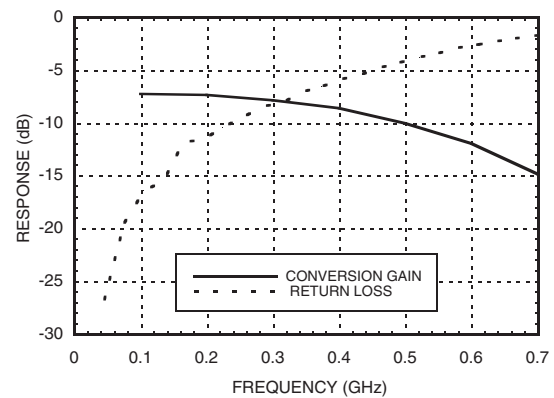
**Return Loss @ LO = 0 dBm**



**Conversion Gain vs. Vdd @ LO = 0 dBm**



**IF Bandwidth @ LO = 0 dBm**

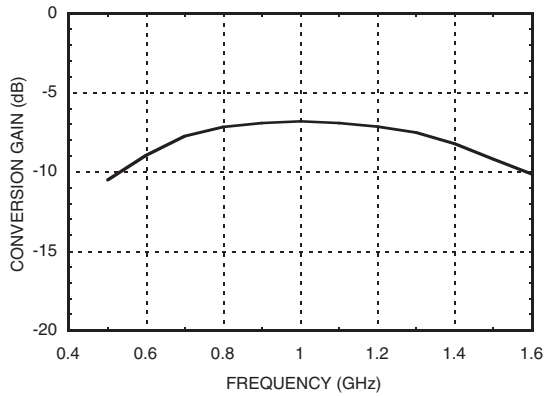




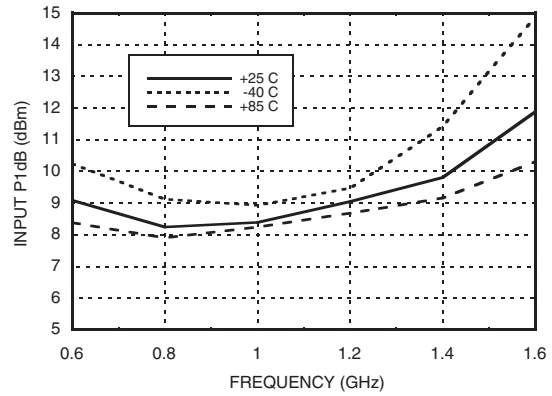
# HMC423MS8 / 423MS8E

## GaAs MMIC MIXER w/ INTEGRATED LO AMPLIFIER, 0.6 - 1.3 GHz

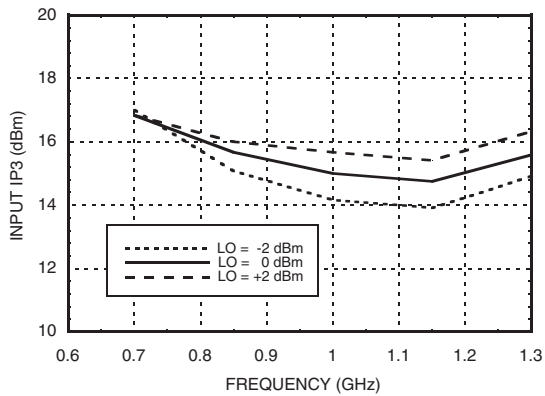
### Upconverter Performance Conversion Gain @ LO = 0 dBm



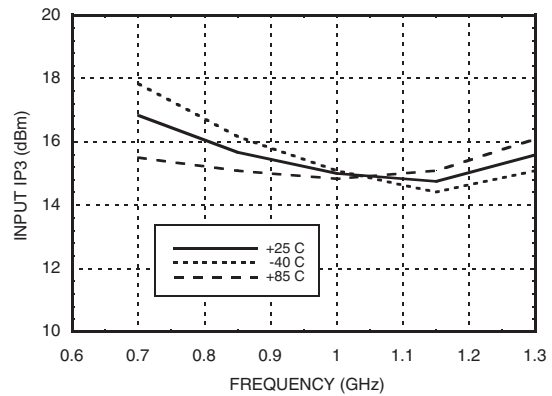
### Input P1dB vs. Temperature @ LO = 0 dBm



### Input IP3 vs. LO Drive\*



### Input IP3 vs. Temperature @ LO = 0 dBm\*



### MxN Spurious @ IF Port

| mRF | nLO |     |     |     |     |
|-----|-----|-----|-----|-----|-----|
|     | 0   | 1   | 2   | 3   | 4   |
| 0   | XX  | 5   | 25  | 27  | 26  |
| 1   | 12  | 0   | 31  | 45  | 57  |
| 2   | 70  | 61  | 70  | 49  | 78  |
| 3   | >92 | 89  | 87  | 73  | 77  |
| 4   | >92 | >92 | >92 | >92 | >92 |

RF = 1.0 GHz @ -10 dBm  
LO = 0.9 GHz @ 0 dBm  
All values in dBc relative to the IF.  
Measured as downconverter.

### Harmonics of LO

| LO Freq. (GHz) | nLO Spur @ RF Port |    |    |    |
|----------------|--------------------|----|----|----|
|                | 1                  | 2  | 3  | 4  |
| 0.7            | 30                 | 15 | 42 | 40 |
| 0.85           | 34                 | 16 | 50 | 42 |
| 1              | 38                 | 19 | 48 | 52 |
| 1.15           | 40                 | 22 | 54 | 58 |
| 1.3            | 42                 | 26 | 44 | 59 |
| 1.45           | 39                 | 31 | 50 | 60 |

LO = 0 dBm  
All values in dBc below input LO level @ RF port.

\* Two-tone input power = 0 dBm each tone, 1 MHz spacing.

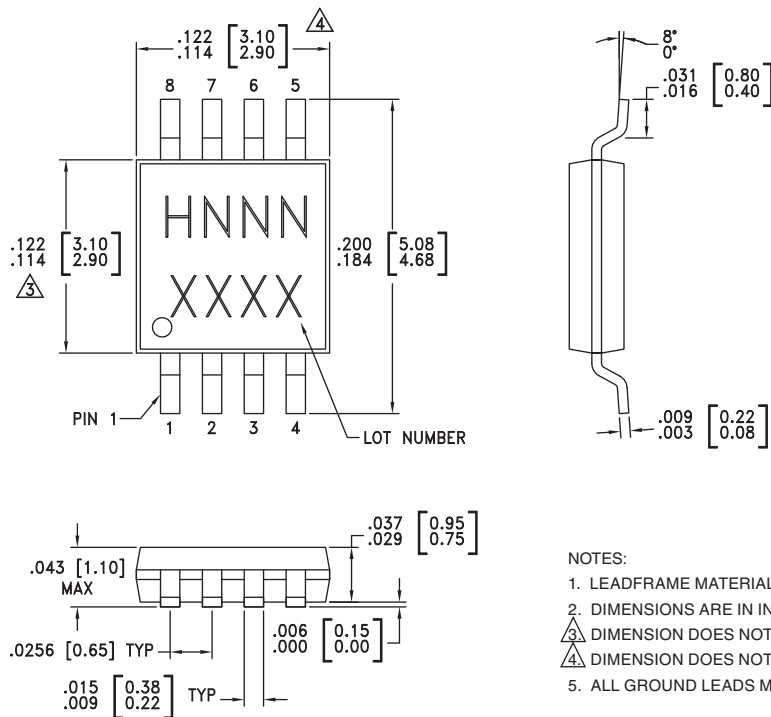
### Absolute Maximum Ratings

|   |                |
|---|----------------|
| RF / IF Input (Vdd = +3V)                                     | +13 dBm        |
| LO Drive (Vdd = +3V)  | +13 dBm        |
| Vdd   | +7 Vdc         |
| IF DC Current   | ±18 mA         |
| Channel Temperature (Tc)                                      | 150 °C         |
| Continuous Pdiss (T = 85°C)<br>(Derate 4.8 mW/°C above 85 °C) | 0.32 W         |
| Storage Temperature   | -65 to +150 °C |
| Operating Temperature   | -40 to +85 °C  |



ELECTROSTATIC SENSITIVE DEVICE  
OBSERVE HANDLING PRECAUTIONS

### Outline Drawing



NOTES:

1. LEADFRAME MATERIAL: COPPER ALLOY
2. DIMENSIONS ARE IN INCHES [MILLIMETERS]
3. DIMENSION DOES NOT INCLUDE MOLDFLASH OF 0.15mm PER SIDE.
4. DIMENSION DOES NOT INCLUDE MOLDFLASH OF 0.25mm PER SIDE.
5. ALL GROUND LEADS MUST BE SOLDERED TO PCB RF GROUND.

### Package Information

| Part Number | Package Body Material                              | Lead Finish   | MSL Rating          | Package Marking <sup>[3]</sup> |
|-------------|--|---------------|---------------------|--------------------------------|
| HMC423MS8   | Low Stress Injection Molded Plastic                | Sn/Pb Solder  | MSL1 <sup>[1]</sup> | H423<br>XXXX                   |
| HMC423MS8E  | RoHS-compliant Low Stress Injection Molded Plastic | 100% matte Sn | MSL1 <sup>[2]</sup> | H423<br>XXXX                   |

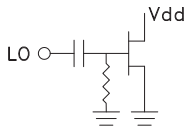

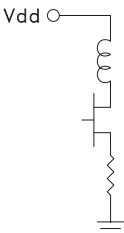
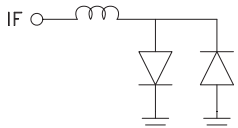
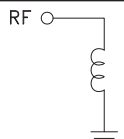
[1] Max peak reflow temperature of 235 °C

[2] Max peak reflow temperature of 260 °C

[3] 4-Digit lot number XXXX

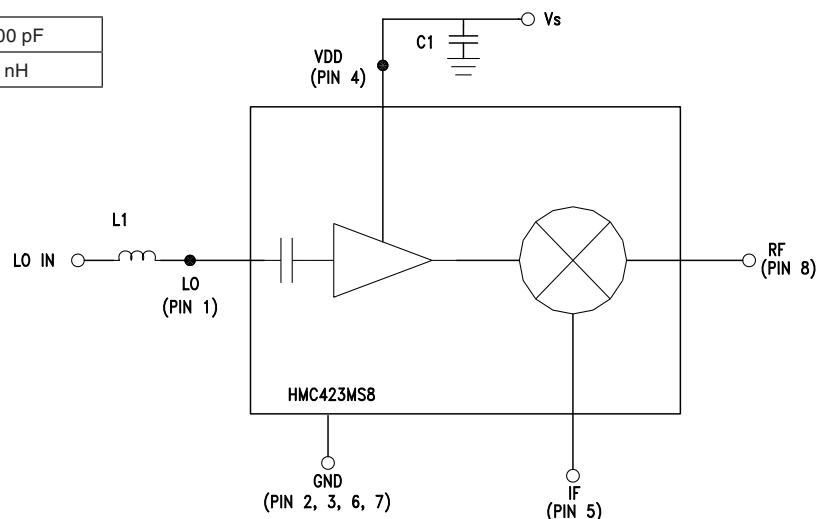
For price, delivery, and to place orders, please contact Hittite Microwave Corporation:  
20 Alpha Road, Chelmsford, MA 01824 Phone: 978-250-3343 Fax: 978-250-3373  
Order On-line at [www.hittite.com](http://www.hittite.com)

### Pin Description

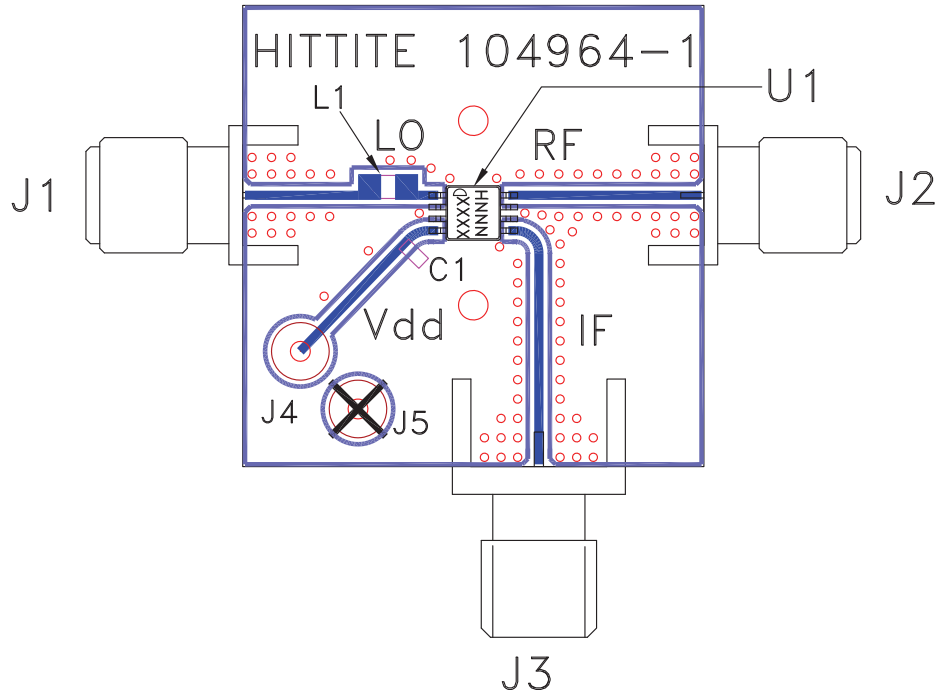
| Pin Number | Function | Description  | Interface Schematic   |
|------------|----------|--|---|
| 1          | LO       | This pin is AC coupled and matched to 50 Ohm from 0.6 - 1.3 GHz.   |    |
| 2, 3, 6, 7 | GND      | Pins must connect to RF ground.  |    |
| 4          | Vdd      | Power supply for the LO Amplifier. One external RF bypass capacitor (10,000 pF) is required.   |    |
| 5          | IF       | This pin is DC coupled. For applications not requiring operation to DC, this port should be DC blocked externally using a series capacitor whose value has been chosen to pass the necessary IF frequency range. For operation to DC, this pin must not source/sink more than 18 mA of current or die non-function and possible die failure will result. |   |
| 8          | RF       | This pin is DC coupled and matched to 50 Ohm from 0.6 - 1.3 GHz  |  |

### Application Circuit

|    |           |
|----|-----------|
| C1 | 10,000 pF |
| L1 | 4.7 nH    |



### Evaluation PCB



### List of Materials for Evaluation PCB 105190 [1]

| Item    | Description                            |
|---------|--|
| J1 - J3 | PCB Mount SMA Connector, Johnson       |
| J4, J5  | DC Pin                                 |
| C1      | 10k pF Chip Capacitor, 0603 Pkg.       |
| L1      | 4.7 nH Inductor, 0805 Pkg.             |
| U1      | HMC423MS8 / HMC423MS8E Mixer           |
| PCB [2] | 104964 Evaluation Board, 1.00" x 1.00" |

[1] Reference this number when ordering complete evaluation PCB

[2] Circuit Board Material: Rogers 4350

The circuit board used in the final application should use RF circuit design techniques. Signal lines should have 50 ohm impedance while the package ground leads should be connected directly to the ground plane similar to that shown. A sufficient number of via holes should be used to connect the top and bottom ground planes. The evaluation circuit board shown is available from Hittite upon request.

## Данный компонент на территории Российской Федерации

### Вы можете приобрести в компании MosChip.

Для оперативного оформления запроса Вам необходимо перейти по данной ссылке:

<http://moschip.ru/get-element>

Вы можете разместить у нас заказ для любого Вашего проекта, будь то серийное производство или разработка единичного прибора.

В нашем ассортименте представлены ведущие мировые производители активных и пассивных электронных компонентов.

Нашей специализацией является поставка электронной компонентной базы двойного назначения, продукции таких производителей как XILINX, Intel (ex.ALTERA), Vicor, Microchip, Texas Instruments, Analog Devices, Mini-Circuits, Amphenol, Glenair.

Сотрудничество с глобальными дистрибьюторами электронных компонентов, предоставляет возможность заказывать и получать с международных складов практически любой перечень компонентов в оптимальные для Вас сроки.

На всех этапах разработки и производства наши партнеры могут получить квалифицированную поддержку опытных инженеров.

Система менеджмента качества компании отвечает требованиям в соответствии с ГОСТ Р ИСО 9001, ГОСТ РВ 0015-002 и ЭС РД 009

### Офис по работе с юридическими лицами:

105318, г.Москва, ул.Щербаковская д.3, офис 1107, 1118, ДЦ «Щербаковский»

Телефон: +7 495 668-12-70 (многоканальный)

Факс: +7 495 668-12-70 (доб.304)

E-mail: [info@moschip.ru](mailto:info@moschip.ru)

Skype отдела продаж:

moschip.ru

moschip.ru\_4

moschip.ru\_6

moschip.ru\_9