

After use

Storage and maintenance: when the unit is to be stored for a long period, remove the power supply and bit, open the carbon brush cover and blow out any accumulated carbon brush dust with compressed air, and wipe the exterior clean. Then store the screwdriver carefully in a dry, dust-free place away from direct sunlight. Store the bit in grease. To ensure continued serviceability, periodically check and maintain the screwdriver.

Troubleshooting

If the screwdriver does not work properly, check the list below. If you cannot solve the problem do not open the unit. Contact one of our authorized agents as soon as possible.

- If the screwdriver does not run

Check that the power supply is outputting power.

Check that the power supply plug is inserted properly and that output plug terminals No.1 (-) and NO.4 (+) show 30VDC (approximate) between them. If no output is shown, change the power supply.

Check for a open or short circuit in the 6p-6p cord connecting the screwdriver to the power supply. If an open or short circuit is found change the cord or plug. (use plug type 2G2022(6p) or purchase equivalent type)

Check that the fuse is intact. Caution: when changing the fuse, unplug the power supply.

Check that the carbon brush is undamaged, that the carbon brush guide cord with the rotor to become too small. Anyone of these factors could cause the screwdriver to stop rotating or rotate abnormally. Inspection method: open the carbon brush cover and use a non-conductive insulated rod to gently press the brush. If the screwdriver resumes rotating, the carbon brush has reached the end of its useful life and must be replaced immediately.

Check that the rotation direction switch are working properly. If no 'click' is heard when a trigger is depressed, it is not working and must be replaced. (make sure to perform this check in a quiet place)

If the screwdriver is not rotating normally

There is a protective circuit within the power supply. Power is only supplied normally from 3 to 5 seconds after current flow begins.

If the motor only runs intermittently during 'Forward' operation, try 'Reverse' operation, or rotate the anvil 90 degrees until a 'click' is heard, then re-attempt 'Forward' operation.

Long-term use causes the motor's commutator to wear down. In this case, it must be replaced. (this repair must be performed by one of our authorized agents)

If the bit falls out easily or wobbles

check that the bit matches our specifications. If not, change the bit to one that does.

If the bit tends to wobble, remove the bit, rotate it 60 or 180 degrees and re-insert it.

If the screwdriver does not stop when the selected torque is reached

An excessive torque setting can cause the screw to strip the threads, with the result that the clutch does not activate. Lower the torque to a level that does not cause stripping.

Differences in size between the bit tip and screw slot lengths can cause slopping. Change to a suitable bit tip.

The brake circuit may be damaged or the sensor switch may have shifted. (this repair must be performed by one of our authorized agents)

Warranty

We provide a one-year free repair service warranty with this product. The warranty is good for one year from the date of purchase entered on the Product Information Form. The retailer's stamp must appear on the form to confirm the date. However, the following circumstances we will charge the user for any parts and labor cost associated with repairs.

For repairs involving normal wear to parts including carbon brushes, bits and power cord, and also to the exterior surface.

If the screwdriver was connected to a power source of the incorrect voltage.

If there was inappropriate use or an attempt to repair the unit by the user.

After the period of the guarantee, or if the user cannot present the manual with stamped Product Information Form.

Retailer's Stamp

Specifications and design may be changed without notice for improvement(A-4)

Serial No.:

ASA Industrial Electric Screwdriver User's Manual
(for full-automatic models—low volt. DC motor with soft start controller)

A Word of Thanks to Our Customers

Thank you for choosing lightweight and powerful electric screwdrivers. In order to insure maximum performance and product life, please read through this manual before using your screwdriver.

Feature

Our screwdrivers are designed for use with precision torque locking screws. It can be used for assembly of middle and large range items such as home appliances, computers furniture and car industry etc.

Low vibration, low noise, meets environmental protection demands.

Low-voltage electronic braking circuit for precision torque control, low breakdown rate and long product life.

Low-voltage DC motor for safety and prevention of electric shocks.

Design features separation of screwdriver and control for low repair costs and higher serviceability rate.

Switching power supply plugs directly into screwdriver and builds a soft start circuit, provide more accurate torque, longer motor life and safe operation.

Right-angel (90°) head adapter attaches easily to screwdriver for use in small spaces (>60mm), operates smoothly. (Optional for 1/4" hex shank only)

Ergonomically designed exterior reduces work fatigue and increases productivity.

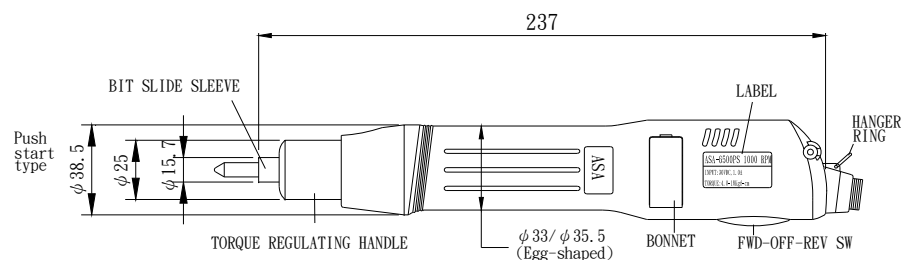
Specifications

| Model | ASA-6000 | ASA-6000PS | ASA-6500 | ASA-6500PS | ASA-6800 | ASA-6800PS | | | | |
|------------------------------|-------------------------------------|---------------------|---------------------|---------------------|---------------------|---------------------|--|--|--|--|
| Power source | 30VDC | | | | | | | | | |
| Torque range Kg·cm/lbf·in | 2.0-12.0 / 1.7-10.4 | | 4.0-20.0 / 3.5-17.4 | | 5.0-25.0 / 4.3-21.7 | | | | | |
| Accuracy | ±3% | | | | | | | | | |
| No load speed / rpm | 1150 | 1000 | 1000 | | 700 | | | | | |
| Torque setting | Stepless | | | | | | | | | |
| Available | Machine screw mm / in | 2.0-3.0 / 0.08-0.12 | | 2.6-4.0 / 0.10-0.16 | | 3.0-5.0 / 0.12-0.20 | | | | |
| | Machine screw mm / in | 2.0-2.6 / 0.08-0.10 | | 2.3-3.5 / 0.09-0.14 | | 2.6-4.0 / 0.10-0.16 | | | | |
| Weight g/lb | 490 / 1.1 | | | | | | | | | |
| Length mm/in | 228 / 9.0 | 237 / 9.3 | 228 / 9.0 | 237 / 9.3 | 228 / 9.0 | 237 / 9.3 | | | | |
| Available bit shank | 5 φ /5mm Hex shank 、 1/4" Hex shank | | | | | | | | | |
| Power consumption | 30 | | 40 | | 40 | | | | | |
| Available power supply | APS-30UA 、 APS-30UE 、 APT-65 | | | | | | | | | |
| Clutch impact | Just one time when torque up | | | | | | | | | |

Outline (this drawing applies only to 1/4" hex. bit shank screwdrivers)

The drawing shows a side view of the screwdriver with the following labels and dimensions:

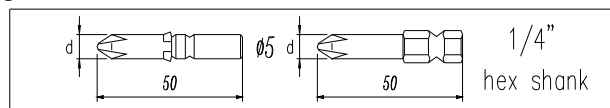
 - Overall length: 228
 - BIT SLIDE SLEEVE
 - TRIGGER (POWER SWITCH)
 - LABEL
 - HANGER RING
 - Lever start type
 - ø36
 - ø24
 - ø13
 - TORQUE REGULATING HANDLE
 - φ 34 (Egg-shaed)
 - BONNET FWD-OFF-REV SW
 - ASA-6000 1000RPM
 - INPUT: 30VDC 1.1A
 - Output: 4.3-21.7kg·cm



Accessories

This product comes supplied with a pair of carbon brush and two bits.

Bits(one set per screwdriver)



| Bit specifications | | | | | | Available Screwdriver Model |
|--------------------|----------------------|--------|------------|----------------------|--------|-----------------------------------|
| φ 5.0 | | | 1/4"Hex | | | |
| Tip NO. | Tip Diameter D | P# | Tip NO. | Tip Diameter D | P# | |
| #1 | φ 3.0 | 7W3644 | #1 | φ 3.0 | 7W6644 | ASA6000 |
| #2 | φ 5.0 | 7W3864 | #2 | φ 4.5 | 7W6764 | ASA6000PS |
| #1 | φ 3.0 | 7W3644 | #1 | φ 3.0 | 7W6644 | ASA6500 |
| #2 | φ 5.0 | 7W3864 | #2 | φ 6.0 | 7W6964 | ASA6500PS |
| #1 | φ 5.0 | 7W3844 | #1 | φ 4.5 | 7W6744 | ASA6800 |
| #2 | φ 5.0 | 7W3864 | #2 | φ 6.0 | 7W6964 | ASA6800PS |

Power supply(optional)

| Model | Dimension mm | | | Operation volt (AC) | Output volt (DC) | Weight (g/lb) |
|----------|--------------|-----|----|------------------------|---------------------|------------------|
| | L | W | H | | | |
| APS-30UA | 154 | 84 | 52 | 100-120V | 30V(constant) | 620/1.36 |
| APS-30UE | | | | 220-240V | | |
| APT-65 | 220 | 118 | 96 | 115V 230V | 30V/20V | 3400/7.5 |

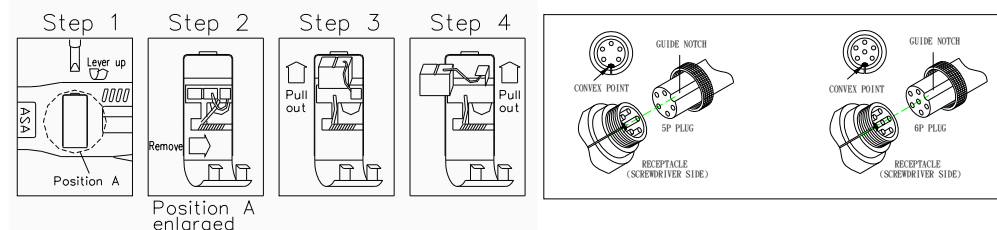
- APS-30UA/APS-30UE are switching circuit power supplies with 0.8"max time settable soft start circuit. They are light and small, consume little electricity and supply stabile voltage.
- Stabilizer accessories : 2 locking ties, 2 pieces of double-sides tape(only for APS-30UA/APS-30UE)

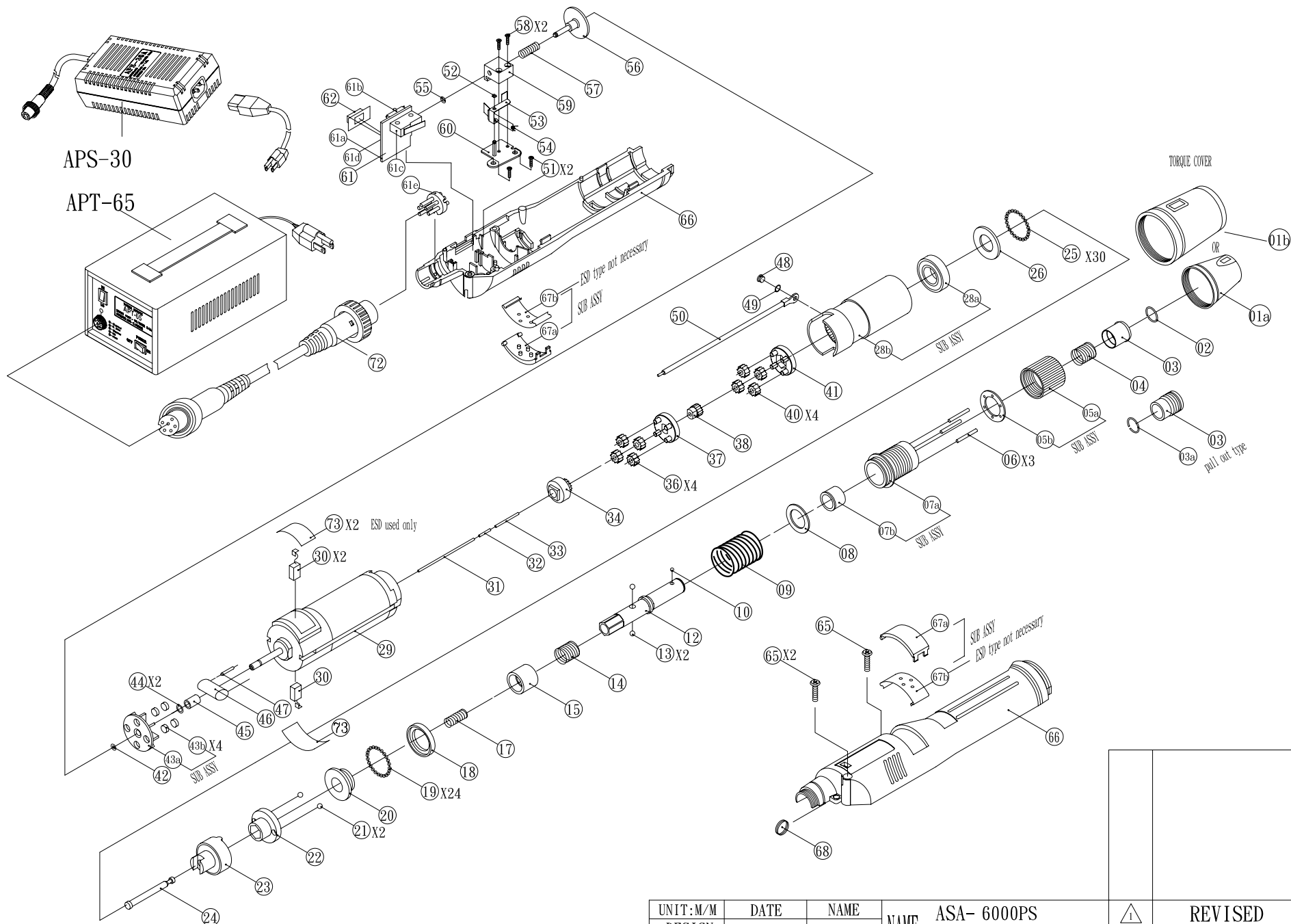
Before use, read the following

- Use the correct voltage: Carefully check the voltage shown on the power supply and this manual and determine the correct voltage. Only plug the unit into a power source of the correct voltage.
- Determine the appropriate torque range: choose the correct screwdriver for the torque you will require. To lengthen product life, avoid long-term high torque use.
- Make sure the screwdriver is undamaged: If the power code is scraped or damaged, it should be immediately unplugged and replaced to avoid electric shocks or a short circuit that could result in fire.
- Use in an appropriate work environment: To ensure safety, do not use in high temperature, high humidity environments or near flammable materials. Keep the power cord away from tools or equipment that might scrape or melt it.
- When plugging in or unplugging the power cord, hold the plug firmly. Never pull on the cord.

Method of operation and important points

- Brace fastened objects securely-Before operation, refer to "torque settings" item to determine the appropriate torque , and adjust the screwdriver to the appropriate torque. Make sure that the fastend objects are securely braced, and then begin operation. This procedure will avoid hazardous rapid rotation of the fastened objects due to excessive torque or insufficient bracing.
- Driving and removing screw: Before operation, set forward/reverse switch properly. To drive a screw, set the switch to the forward(FWD) position. To remove a screw, set it to the reverse(REV) position. Press the screwdriver onto the screw perpendicularly to being operation. Note: Don't operate the FWD/REV switch when the motor is running.
- Torque settings: Use the regulating handle to set the torque. Turning it in a clockwise direction into the screwdriver will increase the torque. Turning it counterclockwise out of the screwdriver will decrease the torque.
Note: The engraved markings on the engraving ring are for reference only and do not indicate torque output.
Torque output can only be determined by repeated testing with a torque meter or hand-held spanner torque meter. To prevent your torque setting from being changed we can provide a torque cover (optional) which covers and secures the regulating handle.
- Bit insertion: Use your finger to depress the slide sleeve into the screwdriver and insert an appropriate bit. When the slide sleeve is released, the bit will be automatically engaged.
Note: Do not hammer the bit in or pull it out forcibly.
- Secure screwdriver during operation: During operation, hang the screwdriver up securely (as from balancer) in order to prevent it from being knocked down and suffering external cracking, internal damage, or a snapped power cord.
- Start and stop: For lever start type. The motor begins running when the lever is depressed and stops when it is released. For push to start type. When the screwdriver is pressed onto a screw perpendicularly, inwards pressure from the screwdriver bit engages the power switch, and the motor begins running. When the pressure on the screwdriver is released, the bit and power switch revert to their original positions and the motor stops running.
- When the selected torque is reached: This product features an internal clutch assembly. When a screw is driven and the selected torque is reached, the clutch assembly will automatically disengage and a 'click' will be heard. At this point, even if the 'trigger' lever or depress force is not released, the power to the motor will be automatically cut off.
Note: When driving screw, grasp the screwdriver firmly in order to prevent upwards recoil generated by the clutch release from forcing the screwdriver bit edge form the screw slot and damaging slot.
- When removing screws: when a previously driven screw cannot be removed using the same torque that it was driven with, raise the torque setting. After the screw is removed, return the regulating handle to its original setting. To simplify this operation, note the number 'click' sounds generated as the regulating handle is turned. When removing a screw, if the required torque is higher than the screwdriver's output torque, the clutch may not disengage, causing the user's hand and arm to be twisted. In this case immediately set the forward/reverse switch to "OFF" to cut the motor power and prevent injury.
- Changing the carbon brush: Insert a slotted hand screwdriver with a 2mm to 4mm head edge into the slot and lever up the carbon maintenance bonnet. Remove the used carbon brush and insert a new carbon brush of the same specifications in the empty space. To complete the operation, close the carbon brush cover tightly by pressure.
(as shown below step 1 to step 4)
Note:
 - When changing the carbon brush first unplug the screwdriver. Use a factory specification carbon brush.
 - The notch on the carbon brush surface must face into the direction of the rotor rotation.





| | | | | | | | | |
|---|--------------|------------|------|--|-----------------|---------|------------|---------|
| UNIT: M/M | DATE | NAME | NAME | ASA- 6000PS 6500PS, 6800PS disassemble graphic | △ | REVISED | 02. 18' 03 | L. I. C |
| DESIGN | | | SYM | DESCRIPTION | | | DATE | SIGN |
| DRAWN | 2001. 12. 18 | Y. C. Hung | | | | | | |
| CHECKED | | | | | | | | |
| APPROVED | 2001. 12. 18 | T. Ke | | | | | | |
| Asa ENTERPRISE CORP. TEL: (02)8751-0022(10 Line) | | | | | DWG. NO: M10010 | | | |

Данный компонент на территории Российской Федерации

Вы можете приобрести в компании MosChip.

Для оперативного оформления запроса Вам необходимо перейти по данной ссылке:

<http://moschip.ru/get-element>

Вы можете разместить у нас заказ для любого Вашего проекта, будь то серийное производство или разработка единичного прибора.

В нашем ассортименте представлены ведущие мировые производители активных и пассивных электронных компонентов.

Нашей специализацией является поставка электронной компонентной базы двойного назначения, продукции таких производителей как XILINX, Intel (ex.ALTERA), Vicor, Microchip, Texas Instruments, Analog Devices, Mini-Circuits, Amphenol, Glenair.

Сотрудничество с глобальными дистрибьюторами электронных компонентов, предоставляет возможность заказывать и получать с международных складов практически любой перечень компонентов в оптимальные для Вас сроки.

На всех этапах разработки и производства наши партнеры могут получить квалифицированную поддержку опытных инженеров.

Система менеджмента качества компании отвечает требованиям в соответствии с ГОСТ Р ИСО 9001, ГОСТ РВ 0015-002 и ЭС РД 009

Офис по работе с юридическими лицами:

105318, г.Москва, ул.Щербаковская д.3, офис 1107, 1118, ДЦ «Щербаковский»

Телефон: +7 495 668-12-70 (многоканальный)

Факс: +7 495 668-12-70 (доб.304)

E-mail: info@moschip.ru

Skype отдела продаж:

moschip.ru

moschip.ru_4

moschip.ru_6

moschip.ru_9