

An Affordable Plotter Package

The New Basic CMPS Plotter Package

Altech part # 34130020

Comes with everything needed to begin printing MT5,6,8,10,12 and 15 tags.

- CMPS plotter
- Size: 17"x18"x4.9"
- CMPS software with cable
- 1 triple fixture for MT5, 6, 8, 10, 12 & 15
- 2 disposable pens



Call today!

For use with Altech & Connectwell Marking Tags Only



No Setup Fee
Stock to 2 weeks

HORIZONTAL



VERTICAL



STANDARD
Standard Pack 100 pcs.

Altech offers and stocks the following Horizontal and Vertical preprinted tags.

- Consecutive numbers 1-10, 11-20 etc. up to 191-200
- Consecutive numbers 1-100 and 101-200
- Common symbols +, -, ÷

CUSTOM

Custom tag printing is available with a TWO WEEK delivery to meet all specialized application needs. To cover setup, printing, labeling and packaging these will be offered at a \$.25 list price each. 500 tag min order please.

- To avoid mistakes, please send us your exact requirements in an excel spread sheet in the exact order that your tags need to be printed. Please configure your custom numbers all in column A in such that the first tag to be printed is in row 1. Any wanted blank tags should be left blank.
- Please label the spreadsheet in a way that shows label size and orientation. For example: MT2/H for a horizontally printed MT2 tag.
- Please supply a separate spreadsheet for each tag size or orientation.

Please contact us for special custom pricing for large quantity orders or a repeat blanket order.

Scriber VS210

The VS200 base unit is a stand-alone plotting system with an integral keyboard and display screen. The marker fixture, plotter pen, and the memory cassette have to be inserted in the base unit to make it operational. The base unit comes in an aluminum carrying case and includes the memory cassette and the power supply. A manual is available in English and Spanish.

The VS 200 can be used to produce labels of all types, with its fixture changeable in a matter of seconds.

The Vario VS 200 makes labeling easy. The menu-driven program guides you quickly and easily through all the steps.

It can be used at any time and in any place. Easily transported in its special case, the battery-operated (battery pack sold separately) VS 200 can be operated precisely where you need it. The spacious case provides enough room for the extensive accessories.

Plotter VP 500

The VP 500 base unit is an auxiliary plotter and has to be connected to a PC via a parallel port or USB connection. It is a high speed plotting device and enables plotting of different markers in one setting. The marker fixture and the plotter pen have to be inserted before commencing the plotting operation. The base unit is primarily controlled through a PC with the help of Vario Sign software. Manual available in English and Spanish.

The special design of the VP 500 enables it to hold different markers from various manufacturers at the same time. It is also possible to write on relatively large markers with a maximum height 14 mm.

Fixtures

Fixtures are required for alignment of markers with respect to the plotter pen. Different marker fixtures can be mounted on the plotter bed of the VP 500 at the same time thereby reducing set up times. Fixtures for different markers from various manufacturers like Altech, Allen Bradley, Connectwell, ContaClip, Entrelec, Weidmuller, Phoenix Contact, PTR, Wieland, Wago, Murrplastik, Partex, SES Sterling, etc. are available. For more information on ordering fixtures please contact Altech.

SCRIBER VS 210



- Identifiers for connectors, wires, cables and equipment
- Cable ties, shrink tubing, labels and signs of different sizes and materials, as well as customer-specific items.
- Size: 14.9"x7.5"x1.77"
- Weight: 6.6 lbs.

Ordering Information

BASE UNIT (includes power supply, memory cassette and carrying case)	34000000
STARTER KIT (includes cleaning unit, pen cleaners, felt pen, 0.25 mm plotter pen) and ink cartridges	34000001
FIXTURES (Contact Altech for available manufactures)	3490xxxx
MEMORY CASSETTE	35500001
BATTERY PACK	35500000



Fixtures & Memory Cassette

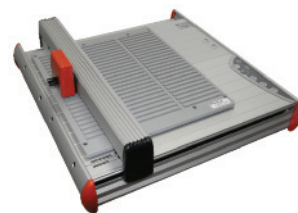


Battery Pack



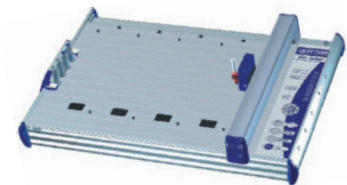
Plotter Pen, Ink Cartridge

CMPS BASIC PLOTTER PACKAGE



- Comes with everything needed to begin printing MT5,6,8,10,12 and 15 tags.
- CMPS plotter
 - Size: 17"x18"x4.9"
 - CMPS software with cable
 - 1 triple fixture for MT5, 6, 8, 10, 12 & 15
 - 2 disposable pens

PLOTTER VP 500

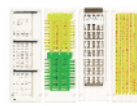


- Identifiers for connectors, wires, cables and equipment
- Cable ties, shrink tubing, labels and signs of different sizes and materials, as well as customer-specific items.
- Size: 26"x18"x4.9"

Ordering Information

CMPS BASIC PLOTTER PACKAGE	34130020
VP 500 BASE UNIT (includes cable)	34000030
STARTER KIT (includes cleaning unit, pen cleaners, felt pen, 0.25 mm plotter pen) and ink cartridges	34000001
VARIO SIGN SOFTWARE	34000020
SERVICE KIT (includes 4 seal bonnets and 10 priming print cards)	34000026
FIXTURES (Contact Altech for available manufactures)	3490xxxx *

* See page 85.



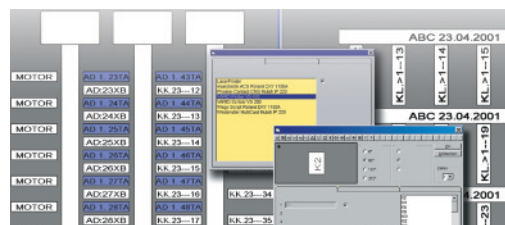
Fixtures



Plotter Pen, Ink Cartridge



Vario Sign



Данный компонент на территории Российской Федерации

Вы можете приобрести в компании MosChip.

Для оперативного оформления запроса Вам необходимо перейти по данной ссылке:

<http://moschip.ru/get-element>

Вы можете разместить у нас заказ для любого Вашего проекта, будь то серийное производство или разработка единичного прибора.

В нашем ассортименте представлены ведущие мировые производители активных и пассивных электронных компонентов.

Нашей специализацией является поставка электронной компонентной базы двойного назначения, продукции таких производителей как XILINX, Intel (ex.ALTERA), Vicor, Microchip, Texas Instruments, Analog Devices, Mini-Circuits, Amphenol, Glenair.

Сотрудничество с глобальными дистрибьюторами электронных компонентов, предоставляет возможность заказывать и получать с международных складов практически любой перечень компонентов в оптимальные для Вас сроки.

На всех этапах разработки и производства наши партнеры могут получить квалифицированную поддержку опытных инженеров.

Система менеджмента качества компании отвечает требованиям в соответствии с ГОСТ Р ИСО 9001, ГОСТ РВ 0015-002 и ЭС РД 009

Офис по работе с юридическими лицами:

105318, г.Москва, ул.Щербаковская д.3, офис 1107, 1118, ДЦ «Щербаковский»

Телефон: +7 495 668-12-70 (многоканальный)

Факс: +7 495 668-12-70 (доб.304)

E-mail: info@moschip.ru

Skype отдела продаж:

moschip.ru

moschip.ru_4

moschip.ru_6

moschip.ru_9