

Network cable - VS-M12FSBP-PPC/ME-94B-LI/5,0 - 1412503

Please be informed that the data shown in this PDF Document is generated from our Online Catalog. Please find the complete data in the user's documentation. Our General Terms of Use for Downloads are valid (<http://download.phoenixcontact.com>)



Assembled Ethernet cable, shielded, 4-pair, AWG 26 stranded (7-wire), RAL 5021 (sea blue), M12 flush-type socket, rear/screw mounting with M16 thread to RJ45 connector/IP67 push/pull metal housing, line, length 5 m



Ethernet

Key commercial data

| | |
|--------------------------------------|------------|
| Packing unit | 1 1 |
| Weight per Piece (excluding packing) | 222.22 GRM |
| Custom tariff number | 85444210 |
| Country of origin | Poland |

Technical data

Mechanical characteristics

| | |
|-----------------------------|--------------------|
| Number of positions | 8 |
| Shielded | Yes |
| Insertion/withdrawal cycles | ≥ 100 |
| Cable diameter | 6.40 mm |
| Cable exit | Straight |
| Cable structure | 4x2xAWG26/7; S/FTP |
| Length of cable | 5 m |

Ambient conditions

| | |
|---------------------------------|------------------------------------------------|
| Ambient temperature (operation) | -25 °C ... 60 °C (cable, fixed installation) |
| | -5 °C ... 60 °C (cable, flexible installation) |
| Degree of protection | IP65/67 |

Material data

| | |
|-----------------------------------------|---------------------|
| Inflammability class according to UL 94 | V2 |
| Outer sheath, material | PUR |
| External sheath, color | water blue RAL 5021 |

Network cable - VS-M12FSBP-PPC/ME-94B-LI/5,0 - 1412503

Technical data

Line characteristics

| | |
|-----------------------------------------------|----------------------------------------------------------------------------|
| Cable type | Ethernet |
| Cable structure | 4x2xAWG26/7; S/FTP |
| Conductor cross section | 4x 2x 0.14 mm ² |
| AWG signal line | 26 |
| Conductor structure signal line | 7x 0.16 mm |
| Core diameter including insulation | 1.04 mm |
| Thickness, insulation | 0.28 mm (signal line) 0.65 mm (Outer cable sheath) |
| External cable diameter | 6.4 mm ± 0.2 mm |
| Wire colors | white/blue-blue, white/orange-orange, white/green-green, white/brown-brown |
| External sheath, color | water blue RAL 5021 |
| Transmission medium | Copper |
| Insulation resistance | ≥ 500 MΩ*km (at 20 °C) |
| Conductor resistance | ≤ 290 Ω/km (at 20 °C) |
| Transmission characteristics (category) | CAT6 _A |
| Wave impedance | 100 Ω ± 5 Ω (At 100 MHz) |
| Signal runtime | 5.3 ns/m |
| Shield attenuation | ≥ 80 dB (at 30 ... 100 MHz) |
| Nominal voltage, cable | ≤ 100 V (at 20 °C) |
| Test voltage Core/Core | 700 V (50 Hz, 1 min.) |
| Test voltage Core/Shield | 700 V (50 Hz, 1 min.) |
| Twisted pairs | 2 cores to the pair |
| Type of pair shielding | Aluminum-lined polyester foil |
| Overall twist | 4 pairs |
| Shielding | Tinned copper braided shield |
| Optical shield covering | 70 % |
| Outer sheath, material | PUR |
| Material conductor insulation | PE |
| Conductor material | Bare Cu litz wires |
| Cable weight | 43 kg/km |
| Smallest bending radius, fixed installation | 25.6 mm |
| Smallest bending radius, movable installation | 51.2 mm |
| Tensile strength short-term/long-term | ≤ 100 N |
| Flame resistance | IEC 60332-1-2 |
| Halogen-free | According to IEC 60754-1 |
| Resistance to oil | in accordance with DIN EN 60811-2-1 |

Network cable - VS-M12FSBP-PPC/ME-94B-LI/5,0 - 1412503

Technical data

Line characteristics

| | |
|---------------------------------|-------------------------------------------------|
| Ambient temperature (operation) | -40 °C ... 70 °C (cable, fixed installation) |
| | -10 °C ... 50 °C (cable, flexible installation) |

Classifications

eCl@ss

| | |
|------------|----------|
| eCl@ss 4.0 | 272607xx |
| eCl@ss 4.1 | 27260701 |
| eCl@ss 5.0 | 27260701 |
| eCl@ss 5.1 | 27060307 |
| eCl@ss 6.0 | 27061801 |
| eCl@ss 7.0 | 27061801 |
| eCl@ss 8.0 | 27061801 |

ETIM

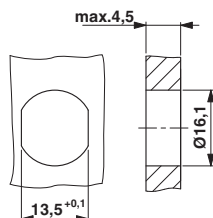
| | |
|----------|----------|
| ETIM 3.0 | EC000830 |
| ETIM 4.0 | EC002599 |
| ETIM 5.0 | EC000830 |

UNSPSC

| | |
|---------------|----------|
| UNSPSC 6.01 | 26121616 |
| UNSPSC 7.0901 | 26121616 |
| UNSPSC 11 | 26121604 |
| UNSPSC 12.01 | 31261501 |
| UNSPSC 13.2 | 26121616 |

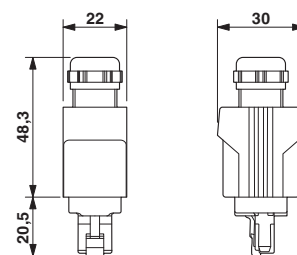
Drawings

Dimensioned drawing



Housing cutout for M16 fastening thread, mounting panel with feed-through hole (alternatively with surface as protection against rotation)

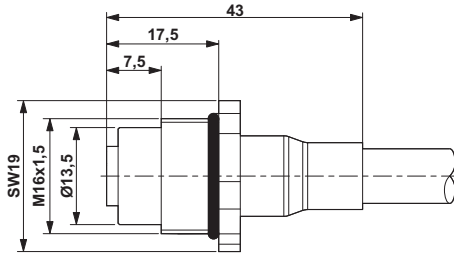
Dimensioned drawing



Push-pull RJ45 connector IP65/67

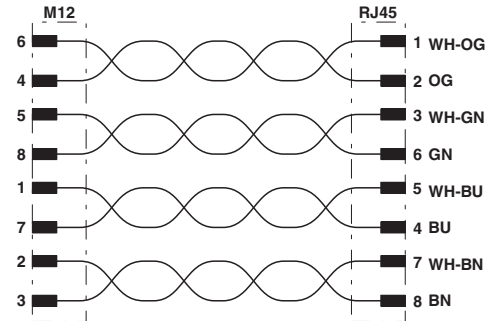
Network cable - VS-M12FSBP-PPC/ME-94B-LI/5,0 - 1412503

Dimensioned drawing



M12 flush-type connector

Circuit diagram



Данный компонент на территории Российской Федерации

Вы можете приобрести в компании MosChip.

Для оперативного оформления запроса Вам необходимо перейти по данной ссылке:

<http://moschip.ru/get-element>

Вы можете разместить у нас заказ для любого Вашего проекта, будь то серийное производство или разработка единичного прибора.

В нашем ассортименте представлены ведущие мировые производители активных и пассивных электронных компонентов.

Нашей специализацией является поставка электронной компонентной базы двойного назначения, продукции таких производителей как XILINX, Intel (ex.ALTERA), Vicor, Microchip, Texas Instruments, Analog Devices, Mini-Circuits, Amphenol, Glenair.

Сотрудничество с глобальными дистрибьюторами электронных компонентов, предоставляет возможность заказывать и получать с международных складов практически любой перечень компонентов в оптимальные для Вас сроки.

На всех этапах разработки и производства наши партнеры могут получить квалифицированную поддержку опытных инженеров.

Система менеджмента качества компании отвечает требованиям в соответствии с ГОСТ Р ИСО 9001, ГОСТ РВ 0015-002 и ЭС РД 009

Офис по работе с юридическими лицами:

105318, г.Москва, ул.Щербаковская д.3, офис 1107, 1118, ДЦ «Щербаковский»

Телефон: +7 495 668-12-70 (многоканальный)

Факс: +7 495 668-12-70 (доб.304)

E-mail: info@moschip.ru

Skype отдела продаж:

moschip.ru

moschip.ru_4

moschip.ru_6

moschip.ru_9