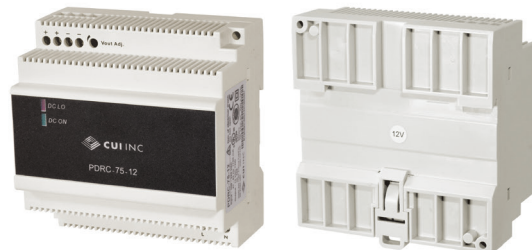




SERIES: PDRC-75 | DESCRIPTION: AC-DC DIN RAIL POWER SUPPLY

FEATURES

- low profile for building automation
- universal input (90~264 Vac)
- integrated fuse and surge protection
- 3,000 Vac input/output isolation voltage
- DC On/Low LED indicators
- over-voltage/current protection
- UL/cUL, TUV, CE certified

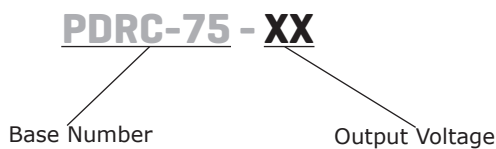


| MODEL | output voltage | output current | output power | ripple and noise ¹ | efficiency ² |
|---------------------------|----------------|----------------|--------------|-------------------------------|-------------------------|
| | (Vdc) | max (A) | max (W) | max (mVp-p) | typ (%) |
| PDRC-75-5 | 5 | 12.0 | 60 | 50 | 80 |
| PDRC-75-12 | 12 | 6.0 | 72 | 50 | 86 |
| PDRC-75-15 | 15 | 5.0 | 75 | 50 | 86 |
| PDRC-75-24 | 24 | 4.2 | 100 | 50 | 89 |
| PDRC-75-24-2 ³ | 24 | 3.8 | 91 | 50 | 89 |

Notes:

1. At full load, nominal input, 20 MHz bandwidth oscilloscope.
2. At nominal input.
3. Model PDRC-75-24-2 is UL 1310 certified.
4. All specifications are measured at $T_a=25^{\circ}\text{C}$, nominal input voltage, and rated output load unless otherwise specified.

PART NUMBER KEY



INPUT

| parameter | conditions/description | min | typ | max | units |
|-----------------|------------------------|-----|-----|------|-------|
| voltage | | 90 | | 264 | Vac |
| | | 120 | | 375 | Vdc |
| frequency | | 47 | | 63 | Hz |
| current | at 90 Vac, full load | | | 1.5 | A |
| | 5 Vdc output model | | | 1.7 | A |
| | 12, 15 output model | | | 2.2 | A |
| inrush current | at 115 Vac, full load | | | 30 | A |
| | at 230 Vac, full load | | | 60 | A |
| leakage current | input to output | | | 0.25 | mA |

OUTPUT

| parameter | conditions/description | min | typ | max | units |
|---|---|------|-----|-------|-------|
| capacitive load | at Vi nom, full load | | | 3,500 | μF |
| initial set point accuracy | | | | ±1 | % |
| line regulation | at full load, V in min to V in max | | | ±1 | % |
| load regulation | at Vi nom, 0~100% load | | | ±1 | % |
| adjustability | via built in trim pot, 0.8 A load | | | | |
| | 5 Vdc output model | 5 | | 5.5 | Vdc |
| | 12 Vdc output model | 12 | | 14 | Vdc |
| | 15 Vdc output model | 13.5 | | 16.5 | Vdc |
| | 24 Vdc output model | 24 | | 28 | Vdc |
| rated continuous loading at max trim voltage | 24 Vdc output model (PDRC-75-24-2) | 20 | | 24.2 | Vdc |
| | 5 Vdc output model (5.5 Vdc) | | | 10.5 | A |
| | 12 Vdc output model (14.0 Vdc) | | | 5.1 | A |
| | 15 Vdc output model (16.5 Vdc) | | | 4.5 | A |
| | 24 Vdc output model (28.0 Vdc) | | | 3.6 | A |
| start-up time | 24 Vdc output model (PDRC-75-24-2) (24.2 Vdc) | | | 3.7 | A |
| | at Vi nom, full load | | | 1.0 | s |
| rise time | at Vi nom, full load with max capacitive load | | | 1.5 | s |
| | at Vi nom, full load | | | 150 | ms |
| hold-up time | at Vi nom, full load with max capacitive load | | | 500 | ms |
| | 5, 12 Vdc output models | | | | |
| | at 115 Vac, full load | 16 | | | ms |
| | at 230 Vac, full load | 60 | | | ms |
| fall time | 15, 24 Vdc output models | | | | |
| | at 115 Vac, full load | 12 | | | ms |
| transient recovery time | at 230 Vac, full load | 60 | | | ms |
| switching frequency | at Vi nom, full load | 35 | | 45 | kHz |
| temperature coefficient | | | | ±0.03 | %/°C |
| power back immunity | at Vi nom, full load, for 1 second | | | | |
| | 5 Vdc output model | 7.5 | | | Vdc |
| | 12 Vdc output model | 18 | | | Vdc |
| | 15 Vdc output model | 22 | | | Vdc |
| DC ON indicator threshold at start-up (GREEN) | 24 Vdc output model | 35 | | | Vdc |
| | 5 Vdc output model | 3.5 | | 4.5 | Vdc |
| | 12 Vdc output model | 9.0 | | 10.8 | Vdc |
| | 15 Vdc output model | 11.0 | | 13.5 | Vdc |
| DC LOW indicator threshold after start-up (RED) | 24 Vdc output model | 19.2 | | 21.6 | Vdc |
| | 5 Vdc output model | 3.5 | | 4.5 | Vdc |
| | 12 Vdc output model | 9.0 | | 10.8 | Vdc |
| | 15 Vdc output model | 11.0 | | 13.5 | Vdc |
| | 24 Vdc output model | 19.2 | | 21.6 | Vdc |

PROTECTIONS

| parameter | conditions/description | min | typ | max | units |
|--------------------------|-------------------------------------|------|-----|------|-------|
| over voltage protection | at Vi nom, full load, auto recovery | | | | |
| | 5 Vdc output model | 5.75 | | 6.5 | Vdc |
| | 12 Vdc output model | 15 | | 16.5 | Vdc |
| | 15 Vdc output model | 18 | | 20 | Vdc |
| | 24 Vdc output model | 30 | | 33 | Vdc |
| | 24 Vdc output model (PDRC-75-24-2) | 24.5 | | 25.5 | Vdc |
| over current protection | fold forward (see curve) | | | | |
| | 24 Vdc output model (PDRC-75-24-2) | 102 | | 108 | % |
| | all other models | 110 | | 150 | % |
| short circuit protection | fold forward | | | | |

SAFETY & COMPLIANCE

| parameter | conditions/description | min | typ | max | units |
|-------------------------------|--|-------|---------|-----|-------|
| isolation voltage | input to output for 1 minute | 3,000 | | | Vac |
| | | 4,242 | | | Vdc |
| isolation resistance | input to output at 500 Vdc | 100 | | | MΩ |
| safety approvals ⁵ | UL 508, UL 1310, UL 60950-1, EN 60950-1 ISA 12.12.01 (Class I, Div 2, Groups A~D) | | | | |
| safety class | class I | | | | |
| EMI/EMC | EN 55032 Class B, EN 55024, ENV 50204, EN 61204-3, EN 61000-3-2, EN 61000-3-3, EN 61000-6-2, EN 61000-6-3, EN 61000-4-2, EN 61000-4-3, EN 61000-4-4, EN 61000-4-5, EN 61000-4-6, EN 61000-4-8, EN 61000-4-11 | | | | |
| pollution degree | 2 | | | | |
| degree of protection | IP20 | | | | |
| MTBF | as per Bellcore Issue 6 at 40 °C, GB | | | | |
| | 5 Vdc output model | | 610,000 | | hours |
| | 12 Vdc output model | | 578,000 | | hours |
| | 15 Vdc output model | | 581,000 | | hours |
| | 24 Vdc output model | | 554,000 | | hours |
| | 24 Vdc output model (PDRC-75-24-2) | | 583,000 | | hours |
| RoHS | yes | | | | |

Notes: 5. Model PDRC-75-24-2 is only model that is UL 1310 certified.

6. The power supply is considered a component which will be installed into final equipment. The final equipment still must be tested to meet the necessary EMC directives.

ENVIRONMENTAL

| parameter | conditions/description | min | typ | max | units |
|-----------------------|---|-----|-----|-------|-------|
| operating temperature | see derating curves | -40 | | 71 | °C |
| storage temperature | | -40 | | 85 | °C |
| humidity | non-condensing | 20 | | 95 | % |
| altitude | IEC 60068-2-13 | | | 4,850 | m |
| vibration | meets IEC 60068-2-6 (Mounting on rail: 10~500 Hz, 2 G, along X,Y,Z axis, for 60 minutes on each axis) | | | | |
| shock | meets IEC 60068-2-27 (15 G, 11 ms, 3 axis, 6 faces, 3 times for each face) | | | | |

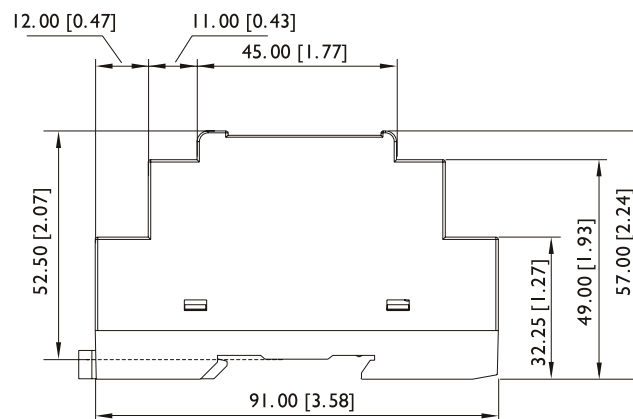
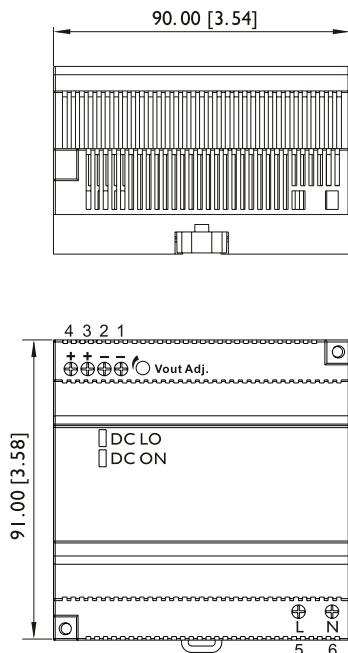
MECHANICAL

| parameter | conditions/description | min | typ | max | units |
|------------------------|---|-----|-----|-----|-------|
| dimensions | 91.00 x 90.00 x 57.00 (3.58 x 3.54 x 2.24 inches) | | | | mm |
| material | plastic | | | | |
| weight | | | 380 | | g |
| cooling | natural convection | | | | |
| input/output connector | accepts 24~12 AWG wire | | | | |

MECHANICAL DRAWING

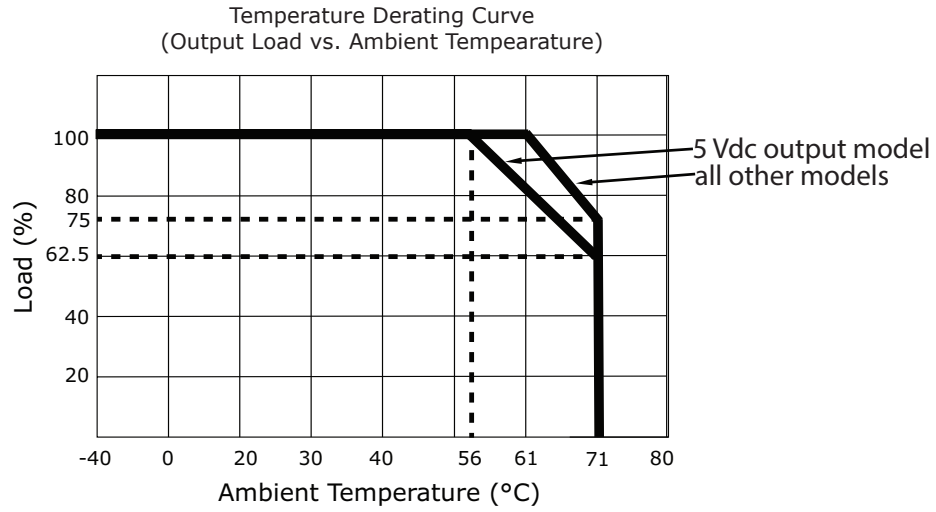
units: mm [inch]
 tolerance:
 X≤30.00: ±0.30 [±0.01]
 30.00<X≤120.00: ±0.50 [±0.02]
 unless otherwise noted

| TERMINAL CONNECTIONS | |
|----------------------|----------|
| TERMINAL | Function |
| 1 | V- |
| 2 | V- |
| 3 | V+ |
| 4 | V+ |
| 5 | L |
| 6 | N |

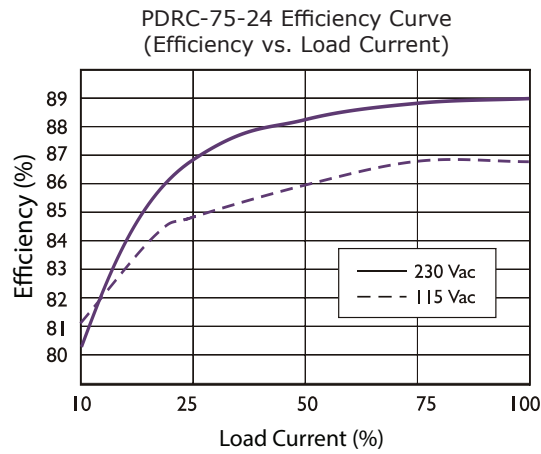


| INSTALLATION | |
|--------------|--|
| DIN RAIL | TS35/7.5 or TS35/15 |
| Cable | flexible/solid, copper conductors only, 60/75°C |
| Wire Range | 24~12 AWG (0.2~2.5 mm ²) |
| Strip Length | 7 mm |
| Screw Torque | 6 lb·in |
| Position | Vertical |
| Cooling | Natural convection, 25 mm clearance on all sides |

DERATING CURVES

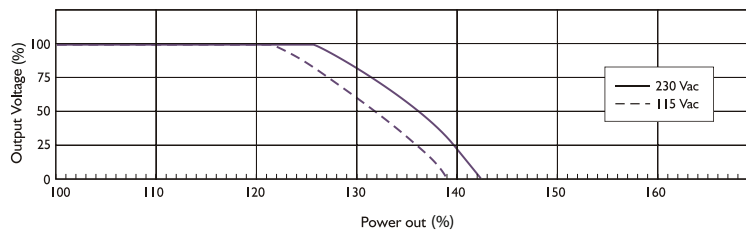


EFFICIENCY CURVES



CURRENT LIMITED CURVE

PDR-75-24 Typical Over Current Protection Curve
(Output Voltage vs. Time)



REVISION HISTORY

| rev. | description | date |
|------|-----------------|------------|
| 1.0 | initial release | 06/17/2019 |

The revision history provided is for informational purposes only and is believed to be accurate.



CUI INC[®]

Headquarters
20050 SW 112th Ave.
Tualatin, OR 97062
800.275.4899

Fax 503.612.2383
cui.com
techsupport@cui.com

CUI offers a two (2) year limited warranty. Complete warranty information is listed on our website.

CUI reserves the right to make changes to the product at any time without notice. Information provided by CUI is believed to be accurate and reliable. However, no responsibility is assumed by CUI for its use, nor for any infringements of patents or other rights of third parties which may result from its use.

CUI products are not authorized or warranted for use as critical components in equipment that requires an extremely high level of reliability. A critical component is any component of a life support device or system whose failure to perform can be reasonably expected to cause the failure of the life support device or system, or to affect its safety or effectiveness.

Данный компонент на территории Российской Федерации

Вы можете приобрести в компании MosChip.

Для оперативного оформления запроса Вам необходимо перейти по данной ссылке:

<http://moschip.ru/get-element>

Вы можете разместить у нас заказ для любого Вашего проекта, будь то серийное производство или разработка единичного прибора.

В нашем ассортименте представлены ведущие мировые производители активных и пассивных электронных компонентов.

Нашей специализацией является поставка электронной компонентной базы двойного назначения, продукции таких производителей как XILINX, Intel (ex.ALTERA), Vicor, Microchip, Texas Instruments, Analog Devices, Mini-Circuits, Amphenol, Glenair.

Сотрудничество с глобальными дистрибьюторами электронных компонентов, предоставляет возможность заказывать и получать с международных складов практически любой перечень компонентов в оптимальные для Вас сроки.

На всех этапах разработки и производства наши партнеры могут получить квалифицированную поддержку опытных инженеров.

Система менеджмента качества компании отвечает требованиям в соответствии с ГОСТ Р ИСО 9001, ГОСТ РВ 0015-002 и ЭС РД 009

Офис по работе с юридическими лицами:

105318, г.Москва, ул.Щербаковская д.3, офис 1107, 1118, ДЦ «Щербаковский»

Телефон: +7 495 668-12-70 (многоканальный)

Факс: +7 495 668-12-70 (доб.304)

E-mail: info@moschip.ru

Skype отдела продаж:

moschip.ru

moschip.ru_4

moschip.ru_6

moschip.ru_9