

PLEASE CHECK WWW.MOLEX.COM FOR LATEST PART INFORMATION

Part Number: [0887689900](#)
Status: **Active**
Overview: high definition multimedia interface hdmi
Description: HDMI*-to-HDMI* Cable Assembly, 30 AWG, 1.0m (3.28') Length

Documents:

[Drawing \(PDF\)](#) [RoHS Certificate of Compliance \(PDF\)](#)
[Product Specification PS-88768-002 \(PDF\)](#)

General

| | |
|------------------------|--|
| Product Family | Cable Assemblies |
| Series | 88768 |
| Connector to Connector | HDMI*-to-HDMI* |
| Overview | <u>high definition multimedia interface hdmi</u> |
| Product Name | HDMI* |

Physical

| | |
|--------------------------------|--|
| Cable Length | 1.0m (3.28') |
| Circuits (Loaded) | 19 |
| Color - Resin | Natural |
| Gender | Male-Male |
| Lock to Mating Part | Yes |
| Material - Metal | High Performance Alloy (HPA) |
| Material - Plating Mating | Gold |
| Material - Plating Termination | Tin |
| Material - Resin | High Temperature Thermoplastic, Low Density Polyethylene |
| Packaging Type | Bag |
| Pitch - Mating Interface (in) | 0.039 In |
| Pitch - Mating Interface (mm) | 1.00 mm |
| Plating min: Mating (µin) | 32 |
| Plating min: Mating (µm) | 0.8 |
| Plating min: Termination (µin) | 50.8 |
| Plating min: Termination (µm) | 1.27 |
| Single Ended | No |
| Termination Interface: Style | Through Hole |
| Wire Insulation Diameter | N/A |
| Wire Size AWG | 30 |
| Wire/Cable Type | Round |

Electrical

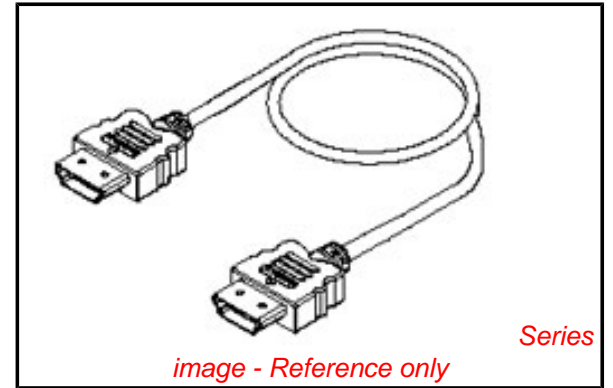
| | |
|-------------------------------|----------|
| Current - Maximum per Contact | 0.5A |
| Impedance | 100 ohms |
| Shielded | Yes |
| Voltage - Maximum | 40V |

Material Info

Reference - Drawing Numbers

| | |
|-----------------------|--------------|
| Product Specification | PS-88768-002 |
| Sales Drawing | SD-887689900 |

*High Definition Multimedia Interface and HDMI are trademarks of HDMI Licensing, LLC.



EU RoHS

**ELV and RoHS
Compliant**
REACH SVHC
 Not Reviewed
Halogen-Free
Status
Not Reviewed

China RoHS

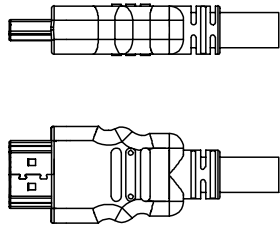
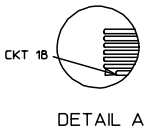
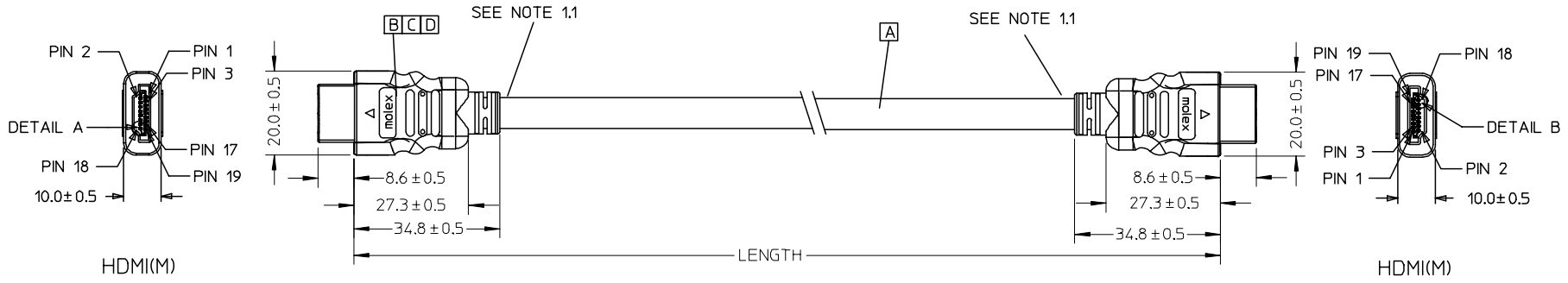


**Need more information on product
environmental compliance?**

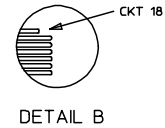
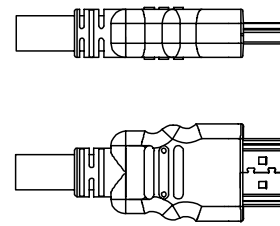
Email productcompliance@molex.com
 For a multiple part number RoHS Certificate of Compliance, [click here](#)

Please visit the [Contact Us](#) section for any non-product compliance questions.

Search Parts in this Series
 88768Series



BACK SIDE



DETAIL B

BACK SIDE

| | | | | | |
|------------|-----------------------------|------------|-------------|--------------------|-----------|
| 88768-9930 | HDMI TO HDMI CABLE ASS'Y,5M | 5000 ± 100 | BLACK | 6.0MM(TMDS-AWG#30) | 887808583 |
| 88768-9920 | HDMI TO HDMI CABLE ASS'Y,3M | 3000 ± 80 | BLACK | 6.0MM(TMDS-AWG#30) | 887808583 |
| 88768-9910 | HDMI TO HDMI CABLE ASS'Y,2M | 2000 ± 60 | BLACK | 6.0MM(TMDS-AWG#30) | 887808583 |
| 88768-9900 | HDMI TO HDMI CABLE ASS'Y,1M | 1000 ± 30 | BLACK | 6.0MM(TMDS-AWG#30) | 887808583 |
| MX P/N | DESCRIPTION | LENGTH | CABLE COLOR | CABLE OD | CABLE P/N |

| | |
|--------------------|-------------|
| ENTER DESCRIPTION | 2005/12/27 |
| EC NO: DG2006-0144 | 2005/12/30 |
| DRWN: JFZHENG | 2006/01/16 |
| CHKD: | |
| APPR: DQLUO | |
| REV | DESCRIPTION |

| |
|-----------------|
| QUALITY SYMBOLS |
| ▽=0 |
| ∇=0 |

| | |
|--|-------|
| GENERAL TOLERANCES (UNLESS SPECIFIED) | |
| | mm |
| | INCH |
| 4 PLACES | ± --- |
| 3 PLACES | ± --- |
| 2 PLACES | ± --- |
| 1 PLACE | ± --- |
| ANGULAR ± ---° | |
| DRAFT WHERE APPLICABLE MUST REMAIN WITHIN DIMENSIONS | |

| | |
|-----------------|------------|
| DIMENSION STYLE | |
| MM ONLY | |
| DRAWN BY | DATE |
| JFZHENG | 2005/12/26 |
| CHECKED BY | DATE |
| JFZHENG | 2005/12/26 |
| APPROVED BY | DATE |
| DQLUO | 2005/12/26 |
| MATERIAL NO. | ENTER PART |
| SIZE | A 4 |

| | | |
|---|--------------|------------------------|
| SCALE | DESIGN UNITS | THIRD ANGLE PROJECTION |
| --- | METRIC | ☉ □ |
| TITLE | | |
| AWG30 HDMI TO HDMI CABLE ASS'Y | | |
| MATERIAL NO. DOCUMENT NO. SHEET NO. | | |
| ENTER PART SD-887689910 1 OF 00 | | |
| THIS DRAWING CONTAINS INFORMATION THAT IS PROPRIETARY TO MOLEX INCORPORATED AND SHOULD NOT BE USED WITHOUT WRITTEN PERMISSION | | |

NOTE:

1. OVERMOLD SPECIFICATION:
 - 1.1 HDMI INNERMOLD WITH BK PVC 887800019
 - 1.2 HDMI OVERMOLD WITH PVC 887800150
2. MECHANICAL SPECIFICATION:
 - CABLE SHOULD STAND THE PULL FORCE 89-111N FOR 30 SECONDS WITH NO VISIBLE TERMINATION DAMAGE.
3. PRODUCT ELECTRICAL SPECIFICATION
 - 3.1 DIELECTRIC STRENGTH.
 - 3.2 INSULATION RESISTANCE.
 - 3.3 CONDUCTIVE RESISTANCE.
 - 3.4 TMDS Signals Time Domain Impedence
 - 3.5 TMDS Signals Time Domain Crosstalk:FEXT
 - 3.6 TMDS Signals Skew
 - 3.7 Attenuation

REFER TO ES-002 ELECTRICAL SPECIFICATION FOR DETAILS.

4.CABLE CONSTRUCTION

- ' (AWG#30*1P+D)*4 + AWG#30*1P + AWG#28*5C, 6.0MMOD'
5. THIS PRODUCT MUST MEET ROHS COMPLIANCE.

WIRE DIAGRAM:

| SHIELD | SHIELD | OVERALL SHIELD | GROUND |
|--------|--------|----------------|--------------------|
| PIN 19 | PIN 19 | PINK | HOT PLUG DETECT |
| PIN 18 | PIN 18 | ORANGE | +5V POWER |
| PIN 17 | PIN 17 | YELLOW | DDC/CEC GROUND |
| PIN 16 | PIN 16 | WHITE | SDA |
| PIN 15 | PIN 15 | RED | SCL |
| PIN 14 | PIN 14 | VIOLET | RESERVED |
| PIN 13 | PIN 13 | GRAY | CEC |
| PIN 12 | PIN 12 | WHITE | TMDS CLOCK- |
| PIN 11 | PIN 11 | BRAID | TMDS CLOCK SHIELD |
| PIN 10 | PIN 10 | WHITE/BLACK | TMDS CLOCK+ |
| PIN 9 | PIN 9 | WHITE | TMDS DATA 0- |
| PIN 8 | PIN 8 | BRAID | TMDS DATA 0 SHIELD |
| PIN 7 | PIN 7 | WHITE/BLUE | TMDS DATA 0+ |
| PIN 6 | PIN 6 | WHITE | TMDS DATA 1- |
| PIN 5 | PIN 5 | BRAID | TMDS DATA 1 SHIELD |
| PIN 4 | PIN 4 | WHITE/GREEN | TMDS DATA 1+ |
| PIN 3 | PIN 3 | WHITE | TMDS DATA 2- |
| PIN 2 | PIN 2 | BRAID | TMDS DATA 2 SHIELD |
| PIN 1 | PIN 1 | WHITE/RED | TMDS DATA 2+ |
| HDMI | HDMI | COLOR | CABLE FUNCTION |

| | | | |
|------|------------------------------------|---|------|
| D | HDMI METAL PLATED 47152-6009 | | 2 |
| C | HDMI METAL CAN 47152-4001 | | 2 |
| B | HDMI HOUSING ASSY 47152-1100 | | 2 |
| A | HDMI SINGLE LINK CABLE (SEE TABLE) | | 1 |
| ITEM | DESCRIPTION | L | QTY. |

| ENTER DESCRIPTION EC NO: DG2006-0144 TIDRWN: JFZHENG 2005/12/27 CHKD: 2005/12/30 APPR: DQLUO 2006/01/16 | DESCRIPTION REV | QUALITY SYMBOLS | GENERAL TOLERANCES (UNLESS SPECIFIED) | DIMENSION STYLE | SCALE | DESIGN UNITS | THIRD ANGLE PROJECTION | | | | | | | | | | | | | | | |
|---|--|--|---|-------------------------|---------------------------|-------------------|------------------------|-------|-------|----------|-------|-------|----------|-------|-------|---------|-------|-------|---------|-----|--------|--|
| | | $\nabla = 0$ $\sphericalcap = 0$ | <table border="1"> <thead> <tr> <th></th> <th>mm</th> <th>INCH</th> </tr> </thead> <tbody> <tr> <td>4 PLACES</td> <td>± ---</td> <td>± ---</td> </tr> <tr> <td>3 PLACES</td> <td>± ---</td> <td>± ---</td> </tr> <tr> <td>2 PLACES</td> <td>± ---</td> <td>± ---</td> </tr> <tr> <td>1 PLACE</td> <td>± ---</td> <td>± ---</td> </tr> </tbody> </table> | | mm | INCH | 4 PLACES | ± --- | ± --- | 3 PLACES | ± --- | ± --- | 2 PLACES | ± --- | ± --- | 1 PLACE | ± --- | ± --- | MM ONLY | --- | METRIC | |
| | | | mm | INCH | | | | | | | | | | | | | | | | | | |
| | | 4 PLACES | ± --- | ± --- | | | | | | | | | | | | | | | | | | |
| 3 PLACES | ± --- | ± --- | | | | | | | | | | | | | | | | | | | | |
| 2 PLACES | ± --- | ± --- | | | | | | | | | | | | | | | | | | | | |
| 1 PLACE | ± --- | ± --- | | | | | | | | | | | | | | | | | | | | |
| | DRAFT WHERE APPLICABLE MUST REMAIN WITHIN DIMENSIONS | DRAWN BY DATE JFZHENG 2005/12/26 CHECKED BY DATE JFZHENG 2005/12/26 APPROVED BY DATE DQLUO 2005/12/26 | TITLE AWG30 HDMI TO HDMI CABLE ASS'Y | | | | | | | | | | | | | | | | | | | |
| | | | | MATERIAL NO. ENTER PART | DOCUMENT NO. SD-887689910 | SHEET NO. 2 OF 00 | | | | | | | | | | | | | | | | |

Данный компонент на территории Российской Федерации

Вы можете приобрести в компании MosChip.

Для оперативного оформления запроса Вам необходимо перейти по данной ссылке:

<http://moschip.ru/get-element>

Вы можете разместить у нас заказ для любого Вашего проекта, будь то серийное производство или разработка единичного прибора.

В нашем ассортименте представлены ведущие мировые производители активных и пассивных электронных компонентов.

Нашей специализацией является поставка электронной компонентной базы двойного назначения, продукции таких производителей как XILINX, Intel (ex.ALTERA), Vicor, Microchip, Texas Instruments, Analog Devices, Mini-Circuits, Amphenol, Glenair.

Сотрудничество с глобальными дистрибьюторами электронных компонентов, предоставляет возможность заказывать и получать с международных складов практически любой перечень компонентов в оптимальные для Вас сроки.

На всех этапах разработки и производства наши партнеры могут получить квалифицированную поддержку опытных инженеров.

Система менеджмента качества компании отвечает требованиям в соответствии с ГОСТ Р ИСО 9001, ГОСТ РВ 0015-002 и ЭС РД 009

Офис по работе с юридическими лицами:

105318, г.Москва, ул.Щербаковская д.3, офис 1107, 1118, ДЦ «Щербаковский»

Телефон: +7 495 668-12-70 (многоканальный)

Факс: +7 495 668-12-70 (доб.304)

E-mail: info@moschip.ru

Skype отдела продаж:

moschip.ru

moschip.ru_4

moschip.ru_6

moschip.ru_9