



13 Gbps, 1:4 FANOUT BUFFER w/ PROGRAMMABLE OUTPUT VOLTAGE

Typical Applications

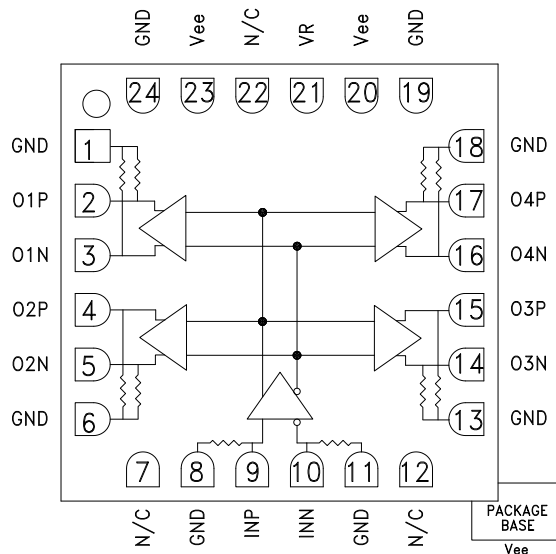
The HMC940LC4B is ideal for:

- RF ATE Applications
- Broadband Test & Measurement
- Serial Data Transmission up to 13 Gbps
- Clock Buffering up to 13 GHz

Features

- Inputs Terminated Internally in 50 Ohms
- Differential Inputs are DC Coupled
- Propagation Delay: 101 ps
- Fast Rise and Fall Times: 26 / 25 ps
- Programmable Differential Output Voltage Swing: 600 - 1400 mV
- Power Dissipation: 440 mW
- 24 Lead Ceramic 4x4 mm SMT Package: 16 mm²

Functional Diagram



General Description

The HMC940LC4B is a 1:4 Fanout Buffer designed to support data transmission rates up to 13 Gbps, and clock frequencies as high as 13 GHz. All differential inputs and outputs are DC coupled and terminated on chip with 50 Ohm resistors to ground. The outputs may be used in either single-ended or differential modes, and should be AC or DC coupled into 50 Ohm resistors connected to ground.

The HMC940LC4B also features an output level control pin, VR which allows for loss compensation or for signal level optimization. The HMC940LC4B operates from a single -3.3V DC supply and is available in a ceramic RoHS compliant 4x4 mm SMT package.

Electrical Specifications, $T_A = +25^\circ\text{C}$ $V_{ee} = -3.3\text{V}$, $V_R = 0\text{V}$

| Parameter | Conditions | Min. | Typ. | Max | Units |
|-----------------------------------|----------------------------|------|---------|------|-------|
| Power Supply Voltage (V_{ee}) | | -3.6 | -3.3 | -3.0 | V |
| Power Supply Current | | | 133 | | mA |
| Maximum Data Rate | | | 13 | | Gbps |
| Maximum Clock Rate | | | 13 | | GHz |
| Input High Voltage | | -0.5 | | 0.5 | V |
| Input Low Voltage | | -1.0 | | 0.0 | V |
| Input Return Loss | Frequency <15 GHz | | 10 | | dB |
| Output Amplitude | Single-Ended, peak-to-peak | | 585 | | mVp-p |
| | Differential, peak-to-peak | | 1170 | | mVp-p |
| Output High Voltage | | | -15 | | mV |
| Output Low Voltage | | | -600 | | mV |
| Output Rise / Fall Time | Single-Ended, 20% - 80% | | 26 / 25 | | ps |

Information furnished by Analog Devices is believed to be accurate and reliable. However, no responsibility is assumed by Analog Devices for its use, nor for any infringements of patents or other rights of third parties that may result from its use. Specifications subject to change without notice. No license is granted by implication or otherwise under any patent or patent rights of Analog Devices. Trademarks and registered trademarks are the property of their respective owners.

For price, delivery, and to place orders: Analog Devices, Inc., One Technology Way, P.O. Box 9106, Norwood, MA 02062-9106 Phone: 781-329-4700 • Order online at www.analog.com Application Support: Phone: 1-800-ANALOG-D



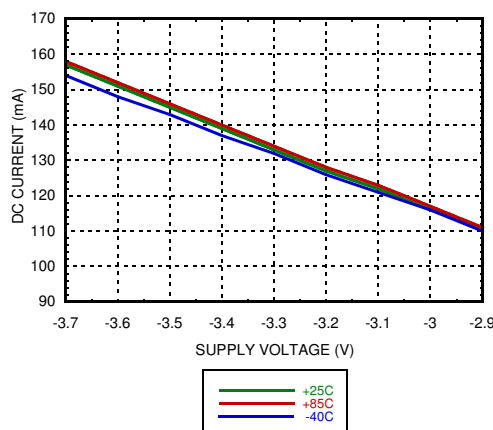
13 Gbps, 1:4 FANOUT BUFFER w/ PROGRAMMABLE OUTPUT VOLTAGE

Electrical Specifications (continued)

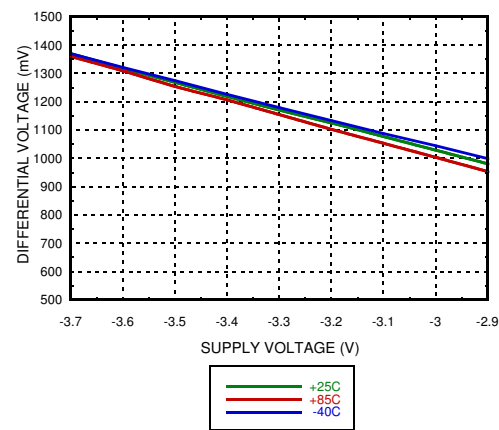
| Parameter | Conditions | Min. | Typ. | Max | Units |
|--------------------------------|--|------|---------|-----|--------|
| Output Return Loss | Frequency <13 GHz | | 10 | | dB |
| Small Signal Gain | | | 20 | | dB |
| Random Jitter J_R | rms | | | 0.2 | ps rms |
| Deterministic Jitter, J_D | $\delta - \delta$, 2^{15} -1 PRBS input [1] | | 4 | 6 | ps |
| Propagation Delay, t_d | | | 101 | | ps |
| D1 to D2 Data Skew, t_{SKEW} | | | ± 3 | | ps |

[1] Deterministic jitter measured at 13 Gbps with a 300 mVp-p, 2^{15} -1 PRBS input sequence.

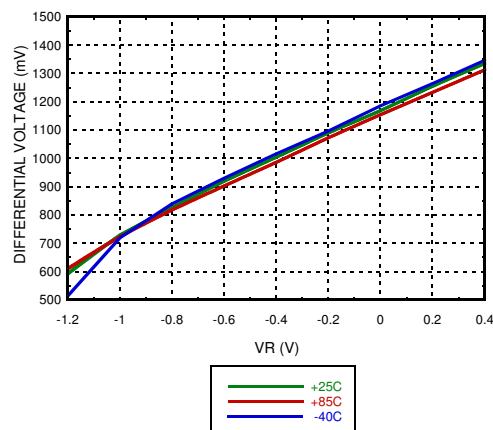
DC Current vs. Supply Voltage [1] [2]



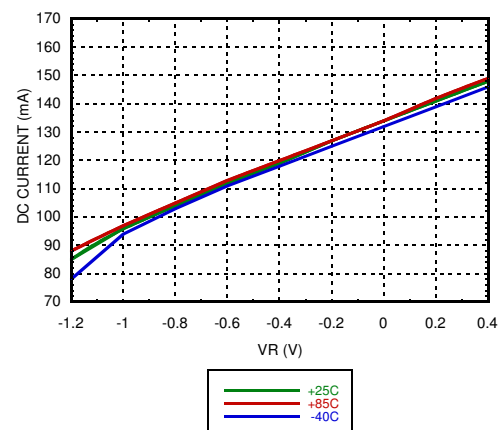
Output Differential vs. Supply Voltage [1] [2]



Output Differential vs. VR [2][3]



DC Current vs. VR [2][3]



[1] VR = 0.0V

[2] Frequency = 13 GHz

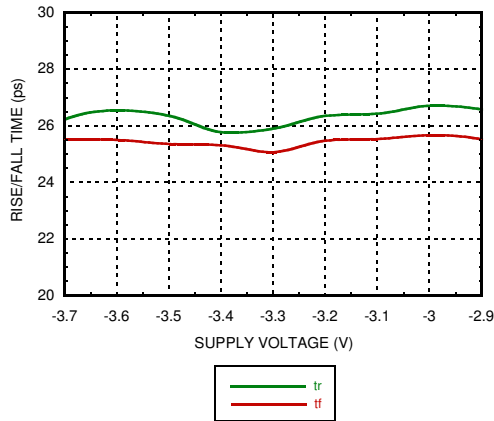
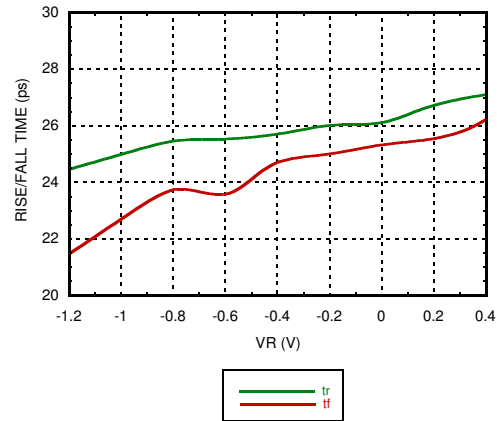
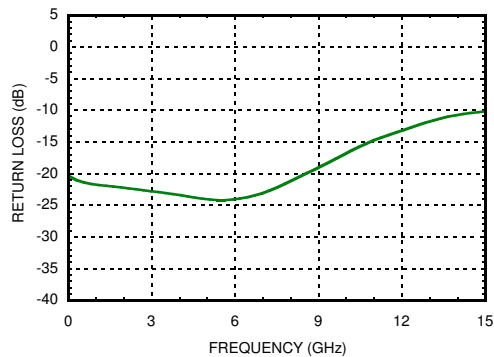
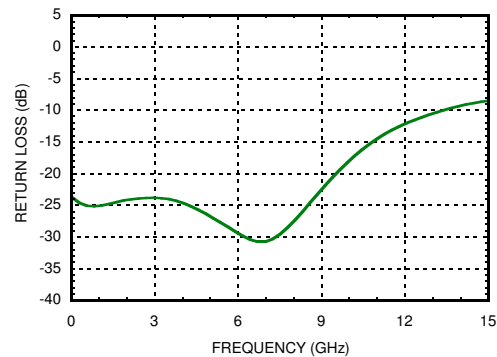
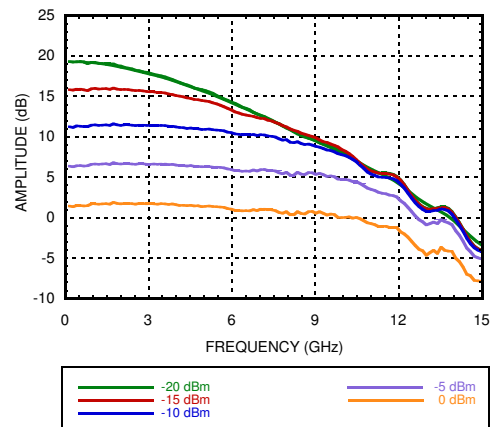
[3] Vee = -3.3V

Information furnished by Analog Devices is believed to be accurate and reliable. However, no responsibility is assumed by Analog Devices for its use, nor for any infringements of patents or other rights of third parties that may result from its use. Specifications subject to change without notice. No license is granted by implication or otherwise under any patent or patent rights of Analog Devices. Trademarks and registered trademarks are the property of their respective owners.

For price, delivery, and to place orders: Analog Devices, Inc., One Technology Way, P.O. Box 9106, Norwood, MA 02062-9106
Phone: 781-329-4700 • Order online at www.analog.com
Application Support: Phone: 1-800-ANALOG-D



13 Gbps, 1:4 FANOUT BUFFER w/ PROGRAMMABLE OUTPUT VOLTAGE

Rise / Fall Time vs. Supply Voltage ^{[1][2]}

Rise / Fall Time vs. VR ^{[2][5]}

Input Return Loss vs. Frequency ^{[1][3][5]}

Output Return Loss vs. Frequency ^{[1][3][5]}

Amplitude vs. Input Power ^{[1][4][5]}

Truth Table

| Input | Outputs |
|--|--|
| IN | Ox |
| L | L |
| H | H |
| Notes: IN = INP - INN Ox = OxP - OxN | H - Positive differential voltage L - Negative differential voltage |

[1] VR = 0.0V [2] Frequency = 13 GHz [3] Device measured on evaluation board with gating after connector
[4] Device measured on evaluation board with port extensions [5] Vee = -3.3V

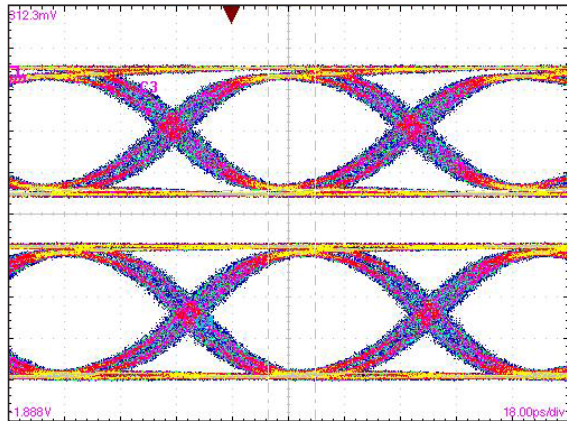
Information furnished by Analog Devices is believed to be accurate and reliable. However, no responsibility is assumed by Analog Devices for its use, nor for any infringements of patents or other rights of third parties that may result from its use. Specifications subject to change without notice. No license is granted by implication or otherwise under any patent or patent rights of Analog Devices. Trademarks and registered trademarks are the property of their respective owners.

For price, delivery, and to place orders: Analog Devices, Inc., One Technology Way, P.O. Box 9106, Norwood, MA 02062-9106
Phone: 781-329-4700 • Order online at www.analog.com
Application Support: Phone: 1-800-ANALOG-D



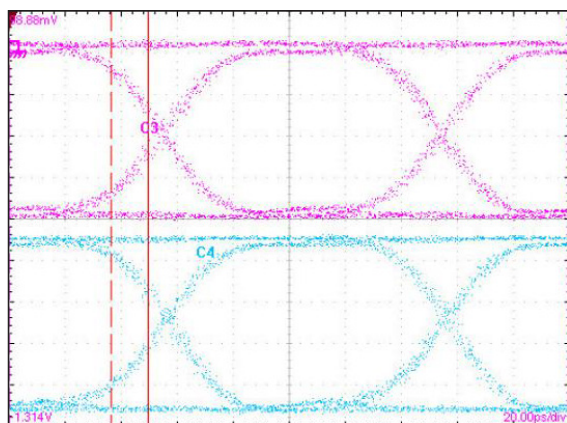
13 Gbps, 1:4 FANOUT BUFFER w/ PROGRAMMABLE OUTPUT VOLTAGE

Eye Diagram



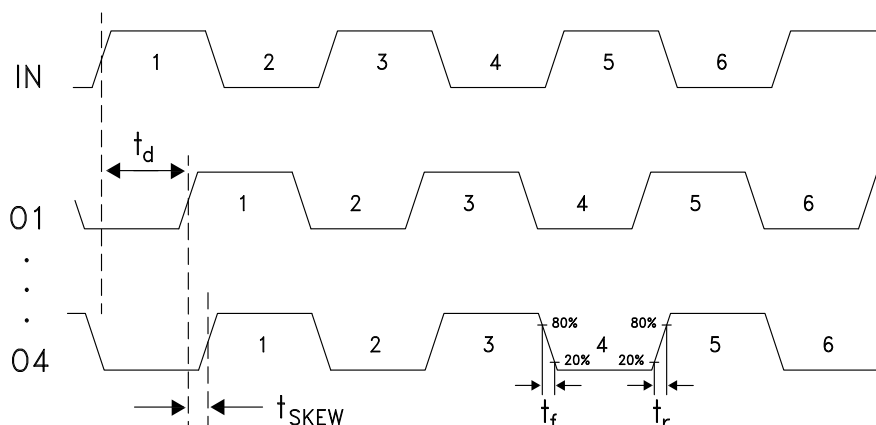
[1] Test Conditions:
Pattern generated with an Agilent N4903A Serial BERT.
Eye Diagram presented on a Tektronix CSA 8000.
Device input = 13 Gbps PN code, V_{in} = 300 mVp-p differential.
Both output channels shown.

Eye Diagram



[2] Test Conditions:
Pattern generated with an Agilent N4903A Serial BERT.
Eye Diagram presented on a Tektronix CSA 8000.
Device input = 10 Gbps PN code, V_{in} = 300 mVp-p differential.
Both output channels shown.

Timing Diagram





13 Gbps, 1:4 FANOUT BUFFER w/ PROGRAMMABLE OUTPUT VOLTAGE

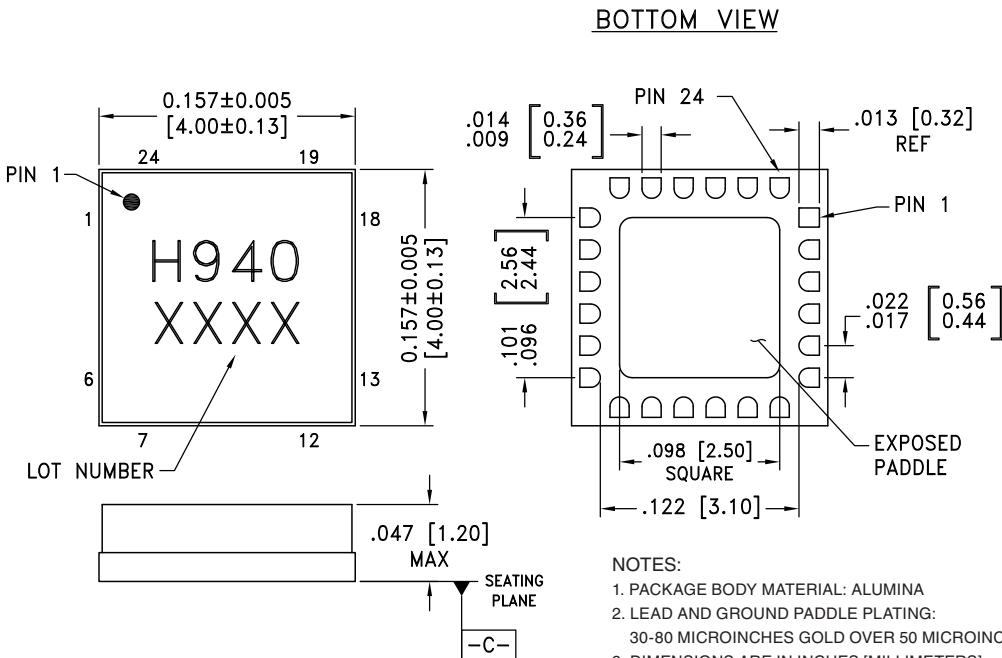
Absolute Maximum Ratings

| | |
|---|-------------------|
| Power Supply Voltage (Vee) | -3.75 V to +0.5 V |
| Input Signals | -2 V to +0.5 V |
| Output Signals | -1.5 V to +1 V |
| Junction Temperature | 125 °C |
| Continuous Pdiss (T=85 °C) (derate 30 mW/°C above 85 °C) | 1.22 W |
| Thermal Resistance (R _{th j-p}) Worse case junction to package paddle | 32.8 °C/W |
| Storage Temperature | -65 °C to +150 °C |
| Operating Temperature | -40 °C to +85 °C |
| ESD Sensitivity (HBM) | Class 1C |



ELECTROSTATIC SENSITIVE DEVICE
OBSERVE HANDLING PRECAUTIONS

Outline Drawing



Package Information

| Part Number | Package Body Material | Lead Finish | MSL Rating | Package Marking ^[2] |
|-------------|-----------------------|------------------|---------------------|--------------------------------|
| HMC940LC4B | Alumina, White | Gold over Nickel | MSL3 ^[1] | H940 XXXX |

[1] Max peak reflow temperature of 260 °C

[2] 4-Digit lot number XXXX


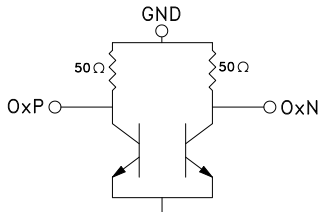
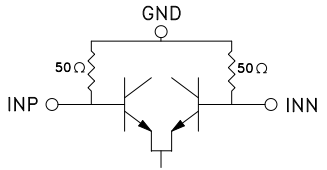
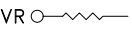
Information furnished by Analog Devices is believed to be accurate and reliable. However, no responsibility is assumed by Analog Devices for its use, nor for any infringements of patents or other rights of third parties that may result from its use. Specifications subject to change without notice. No license is granted by implication or otherwise under any patent or patent rights of Analog Devices. Trademarks and registered trademarks are the property of their respective owners.

For price, delivery, and to place orders: Analog Devices, Inc.,
One Technology Way, P.O. Box 9106, Norwood, MA 02062-9106
Phone: 781-329-4700 • Order online at www.analog.com
Application Support: Phone: 1-800-ANALOG-D



13 Gbps, 1:4 FANOUT BUFFER w/ PROGRAMMABLE OUTPUT VOLTAGE

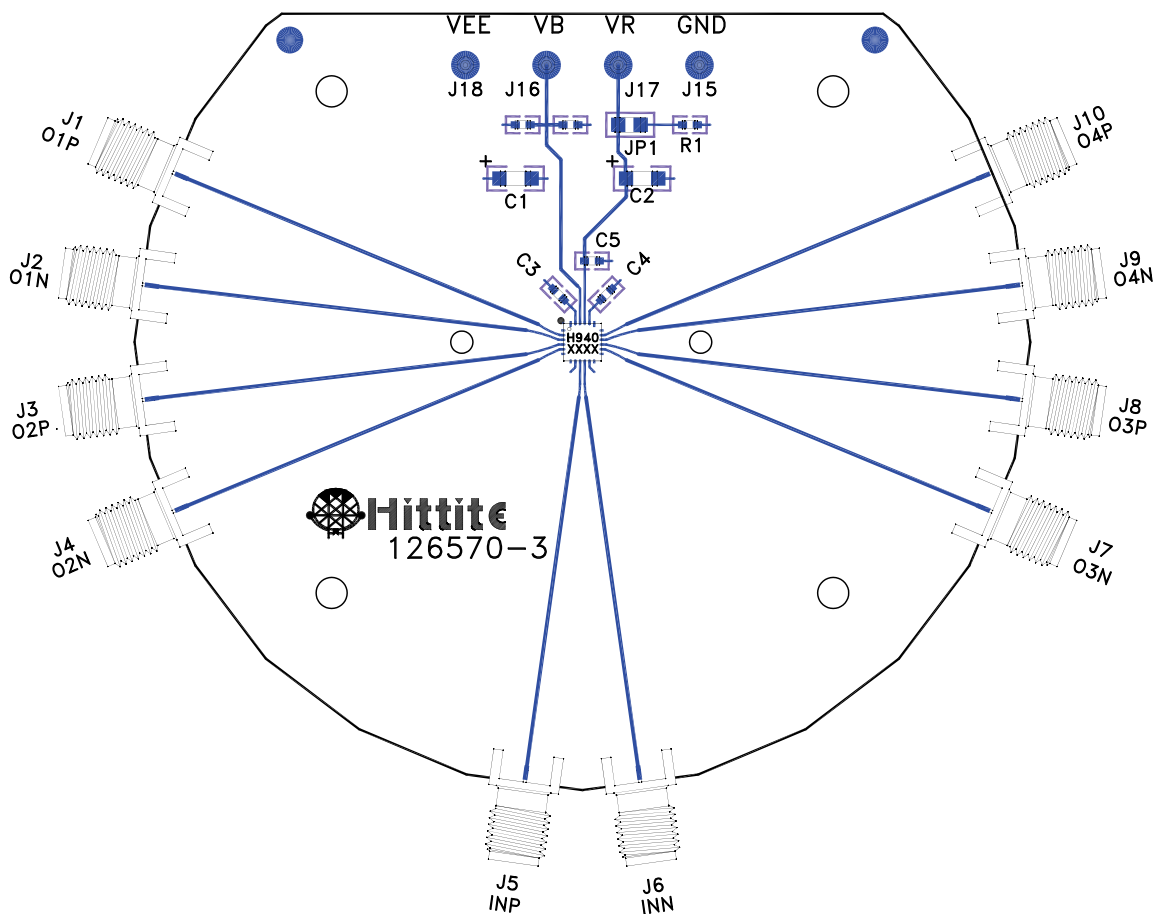
Pin Descriptions

| Pin Number | Function | Description | Interface Schematic |
|-----------------------------|--|--|---|
| 1, 6, 8, 11, 13, 18, 19, 24 | GND | These pins must be connected to a high quality RF/DC ground. |  |
| 2, 3, 4, 5, 14, 15, 16, 17 | O1P, O1N, O2P, O2N, O3N, O3P, O4N, O4P | Differential Outputs: Current Mode Logic (CML) referenced to positive supply. |  |
| 7, 12, 22 | N/C | The pins are not connected internally; however, all data shown herein was measured with these pins connected to RF/DC ground externally. | |
| 9, 10 | INP, INN | Differential Inputs: Current Mode Logic (CML) referenced to positive supply |  |
| 20, 23 Package Base | Vee | These pins and the exposed paddle must be connected to the negative voltage supply. | |
| 21 | VR | Output level control. Output level may be increased or decreased by applying a voltage to VR per "Output Differential vs. VR" plot. |  |



**13 Gbps, 1:4 FANOUT BUFFER
w/ PROGRAMMABLE OUTPUT VOLTAGE**

Evaluation PCB



List of Materials for Evaluation PCB 126572 [1]

| Item | Description |
|-----------|---|
| J1 - J10 | PCB Mount SMA RF Connectors |
| J15 - J18 | DC Pin |
| JP1 | 0.1" Header with Shorting Jumper |
| C1, C2 | 4.7 μ F Capacitor, Tantalum |
| C3 - C5 | 100 pF, Capacitor, 0603 Pkg |
| R1 | 10 Ohm Resistor, 0603 Pkg. |
| U1 | HMC940LC4B High Speed Logic, Fanout Buffer |
| PCB [2] | 126570 Evaluation Board |

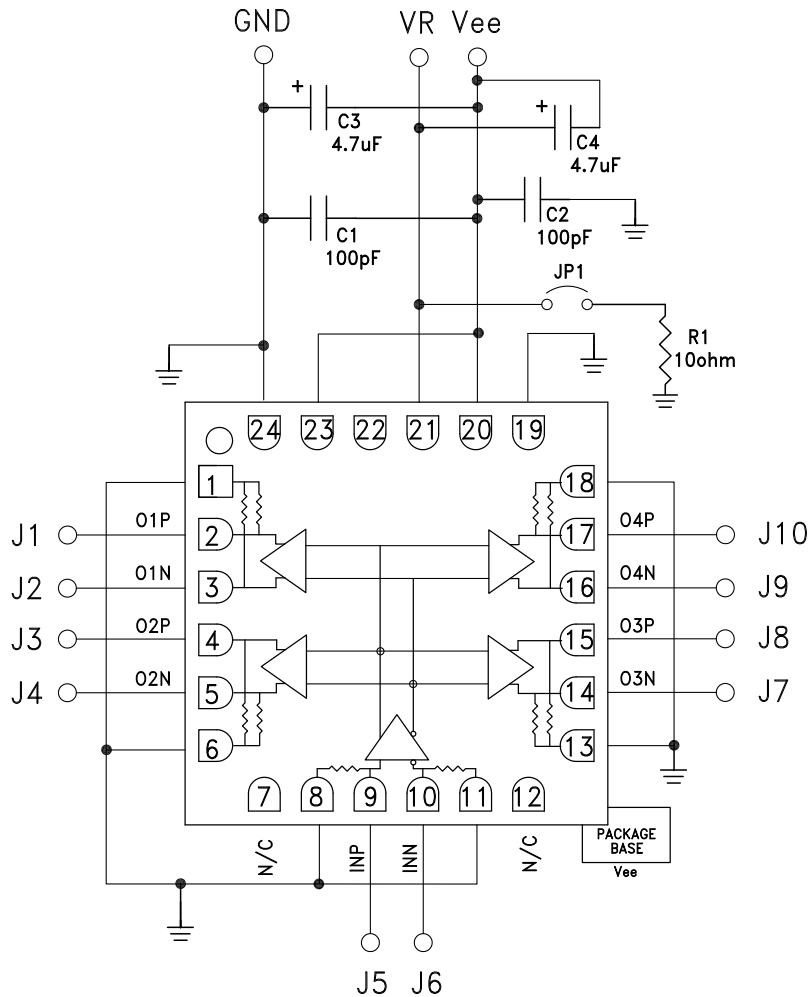
[1] Reference this number when ordering complete evaluation PCB

[2] Circuit Board Material: Arlon 25FR or Rogers 4350

The circuit board used in the application should use RF circuit design techniques. Signal lines should have 50 Ohm impedance while the package ground leads should be connected directly to the ground plane similar to that shown. The exposed packaged base should be connected to Vee. A sufficient number of via holes should be used to connect the top and bottom ground planes. The evaluation circuit board shown is available from Hittite upon request. Install jumper on JP1 to short VR to GND for normal operation.

**13 Gbps, 1:4 FANOUT BUFFER
w/ PROGRAMMABLE OUTPUT VOLTAGE**

Application Circuit



Данный компонент на территории Российской Федерации

Вы можете приобрести в компании MosChip.

Для оперативного оформления запроса Вам необходимо перейти по данной ссылке:

<http://moschip.ru/get-element>

Вы можете разместить у нас заказ для любого Вашего проекта, будь то серийное производство или разработка единичного прибора.

В нашем ассортименте представлены ведущие мировые производители активных и пассивных электронных компонентов.

Нашей специализацией является поставка электронной компонентной базы двойного назначения, продукции таких производителей как XILINX, Intel (ex.ALTERA), Vicor, Microchip, Texas Instruments, Analog Devices, Mini-Circuits, Amphenol, Glenair.

Сотрудничество с глобальными дистрибьюторами электронных компонентов, предоставляет возможность заказывать и получать с международных складов практически любой перечень компонентов в оптимальные для Вас сроки.

На всех этапах разработки и производства наши партнеры могут получить квалифицированную поддержку опытных инженеров.

Система менеджмента качества компании отвечает требованиям в соответствии с ГОСТ Р ИСО 9001, ГОСТ РВ 0015-002 и ЭС РД 009

Офис по работе с юридическими лицами:

105318, г.Москва, ул.Щербаковская д.3, офис 1107, 1118, ДЦ «Щербаковский»

Телефон: +7 495 668-12-70 (многоканальный)

Факс: +7 495 668-12-70 (доб.304)

E-mail: info@moschip.ru

Skype отдела продаж:

moschip.ru

moschip.ru_4

moschip.ru_6

moschip.ru_9