

## MAXM17505 5V Output Evaluation Kit

## Evaluates: MAXM17505 in 5V Output-Voltage Application

### General Description

The MAXM17505 evaluation kit (EV kit) is a demonstration circuit of the MAXM17505 high-voltage, high-efficiency, current-mode scheme, synchronous step-down DC-DC switching power module. The EV kit is designed for 5V output and delivers up to 1.7A load current from a wide input-voltage range of 11V to 60V. The EV kit switches at an optimal 500kHz switching frequency to allow the use of small component-sizes, helping to minimize solution-size while maintaining high-performance. The EV kit provides a precision-enable input, an open-drain  $\overline{\text{RESET}}$  output signal, and external frequency synchronization to provide a simple and reliable startup sequence and eliminate beat frequency between regulators. The EV kit also includes optional component footprints to program different output voltages, an adjustable input undervoltage-lockout, and a soft-start time to control inrush current during startup. The MAXM17505 IC data sheet provides a complete description of the part that should be read in conjunction with this data sheet prior to modifying the demo circuit.

Ordering Information appears at end of data sheet.

### Features

- Highly Integrated Solution with Integrated Shield Inductor
- Wide 11V to 60V Input Range
- Preset 5V Output with a Fixed Resistor Divider on FB (Feedback Pin)
- Programmable Output-Voltage Feature (0.9V to 12V)
- Up to 1.7A Output Current
- High 93.3% Efficiency ( $V_{\text{IN}} = 12\text{V}$ ,  $V_{\text{OUT}} = 5\text{V}$  at 0.74A)
- 500kHz Switching Frequency
- Enable/UVLO Input, Resistor-Programmable UVLO Threshold
- Adjustable Soft-Start Time
- Selectable PWM, PFM, or DCM Mode
- Open-Drain  $\overline{\text{RESET}}$  Output
- External Frequency Synchronization
- Overcurrent and Overtemperature Protection
- Low-Profile, Surface-Mount Components
- Lead(Pb)-Free and RoHS Compliant
- Fully Assembled and Tested

# MAXM17505 5V Output Evaluation Kit

# Evaluates: MAXM17505 in 5V Output-Voltage Application

## Quick Start

### Recommended Equipment

- MAXM17505 EV kit
- 11V to 60V DC power supply ( $V_{IN}$ )
- Dummy load capable of sinking 1.7A
- Digital voltmeter (DVM)
- 100MHz dual-trace oscilloscope

### Procedure

The EV kit is fully assembled and tested. Follow the steps below to verify board operation. **Caution: Do not turn on the power supply until all connections are completed.**

- 1) Set the power supply at a voltage between 11V and 60V. Disable the power supply.
- 2) Connect the positive and negative terminals of the power supply to IN and PGND PCB pads, respectively.
- 3) Connect the positive and negative terminals of the 1.7A load to OUT and PGND2 PCB pads, respectively, and set the load to 0A.
- 4) Connect the DVM across the OUT PCB pad and the PGND2 PCB pad.
- 5) Verify that no shunts are installed across pin 1-2 on jumper JU1 to enable UVLO (see [Table 1](#) for details).
- 6) Verify that a shunt is installed across JU3 to disable the external synchronization (see [Table 3](#) for details).
- 7) Verify that a shunt is installed across JU2 to enable PWM mode (see [Table 2](#) for details).
- 8) Enable the input power supply.
- 9) Verify the DVM displays 5V.
- 10) Increase the load up to 1.7A to verify the DVM continues displaying 5V.

## Detailed Description of Hardware

The EV kit is a proven circuit to demonstrate the high-voltage, high-efficiency, and compact solution-size of the synchronous step-down DC-DC power module. The output voltage is preset for 5V to operate from 11V to 60V, providing up to 1.7A load current. The optimal frequency is set at 500kHz to maximize efficiency and minimize component size. The EV kit includes jumpers JU1 to enable/disable UVLO of the device, JU2 to configure in PWM, PFM, or DCM mode in advantage of light-load efficiency, and JU3 to enable/disable external clock synchronize (SYNC). The  $\overline{\text{RESET}}$  PCB pad is also available for monitoring output voltage regulation to enable/disable the application circuit of the load. The electrolytic capacitor (C8) is required only when the  $V_{IN}$  power supply is situated far from the MAXM17505 circuit. When R4 is open, the device switches at 500kHz switch-

ing frequency. On the bottom layer, additional footprints of optional components are included to ease board modification for different input/output configurations.

### Soft-Start Input (SS)

The device utilizes an adjustable soft-start function to limit inrush current during startup. The soft-start time is programmed by the value of the external capacitor from SS to GND (C1). The selected output capacitance ( $C_{SEL}$ ) and the output voltage ( $V_{OUT}$ ) determine the minimum value of C1, as shown by the following equation:

$$C1 \geq 28 \times 10^{-3} \times C_{SEL} \times V_{OUT}$$

where C1 is in nF and  $C_{SEL}$  is in  $\mu\text{F}$

The soft-start time ( $t_{SS}$ ) is calculated by the equation below:

$$t_{SS} = C1 / 5.55$$

where  $t_{SS}$  is in ms and C1 is in nF.

### Programmable Undervoltage Lockout (UVLO)

The EV kit offers an adjustable input undervoltage-lockout level by resistor dividers connected between the IN, EN/UVLO, and GND pins. For normal operation, a shunt should not be installed across pins 1-2 on JU1 to enable the output through an internal pullup 3.3M $\Omega$  resistor from the EN/UVLO pin to the IN pin. To disable the output, install the shunt across pins 1-2 on JU1 to pull EN/UVLO pin to GND. See [Table 1](#) for JU1 jumper setting details. The EV kit also provides an optional R3 PCB footprint to program a UVLO threshold voltage at which an input-voltage level device turns on. The R3 resistor can be calculated by the following equation:

$$R3 = \frac{4009.5}{(V_{INU} - 1.215)}$$

where  $V_{INU}$  is the input voltage at which the device is required to turn on, and R3 unit is in k $\Omega$ .

### Mode Selection (MODE)

**Table 1. UVLO Enable/Disable Configuration (JU1)**

SHUNT POSITION	EN PIN	MAXM17505_OUTPUT
Installed	Connected to GND	Disable
Not installed*	Connected to VIN	Enable

\*Default position.

# MAXM17505 5V Output Evaluation Kit

The device's MODE pin can be used to select among PWM, PFM, or DCM modes of operation in advance of constant frequency or high efficiency at light-loads. The logic state of the MODE pin is latched when  $V_{CC}$  and EN/UVLO voltage exceed the respective UVLO rising thresholds and all internal voltages are ready to allow LX switching. The changes on the MODE pin are ignored during normal operation. Refer to the MAXM17505 IC data sheet for more information on the PWM, PFM, and DCM modes of operation. [Table 2](#) shows EV kit jumper settings that can be used to configure the desired mode of operation.

## External Clock Synchronization (SYNC)

The internal oscillator of the device can be synchronized to an external clock signal to eliminate beat frequency between regulators through the SYNC pin. The external synchronization clock frequency must be between  $1.1f_{SW}$  and  $1.4f_{SW}$ , where  $f_{SW}$  is the frequency of operation set by R5. The minimum external clock high pulse width and amplitude should be greater than 50ns and 2.1V, respectively. The minimum external clock low pulse width should be

Table 2. MODE Description (JU2)

SHUNT POSITION	MODE PIN	MAXM17505_MODE
Not installed	Unconnected	PFM mode of operation
1-2	Connected to VCC	DCM mode of operation
2-3*	Connected to GND	PWM mode of operation

\*Default position.

# Evaluates: MAXM17505 in 5V Output-Voltage Application

greater than 160ns, and the maximum external clock low pulse amplitude should be less than 0.8V. [Table 3](#) describes the connection of the SYNC pin.

## Setting $V_{OUT}$ with a Resistive Voltage-Divider at FB

The EV kit is preset for 5V and offers an adjustable output voltage range as low as 0.9V up to 12V at 1.7A maximum load. The adjustable output voltage can be programmed by the set of resistor-dividers R1 and R2. Refer to Table 1 (*Selection Component Values*) on the MAXM17505 IC data sheet to select optimal component values for each specific input voltage range from 4.5V to 60V and an output voltage from 0.9V to 12V. To obtain an output voltage other than the default-setting outputs in Table 1, only seven component (R1, R2, C1-C4, and C8) values need to be modified by the equation provided in the *Setting the Output Voltage* section of the IC data sheet.

Table 3. SYNC Description (JU3)

SHUNT POSITION	SYNC PIN	MAXM17505_SYNC
1-2*	Connected to SGND	SYNC feature unused
Not installed	Connected to test loop on PCB	Frequency can be synchronized with an external clock

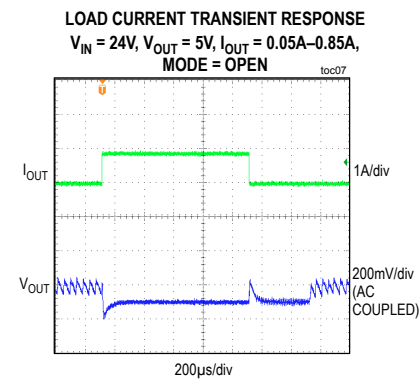
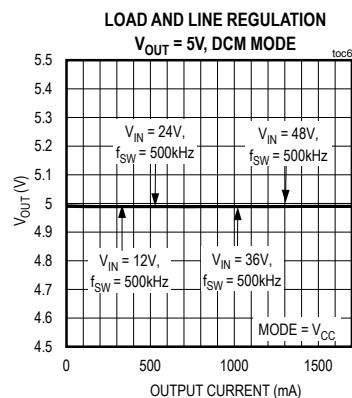
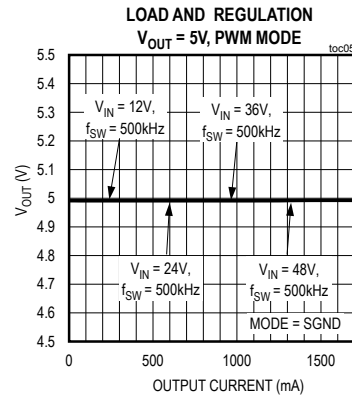
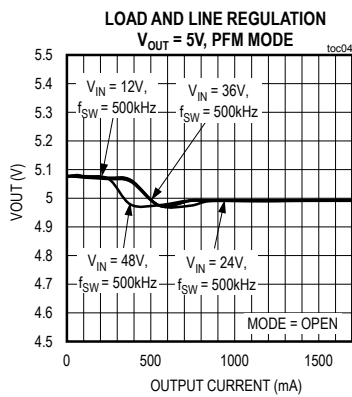
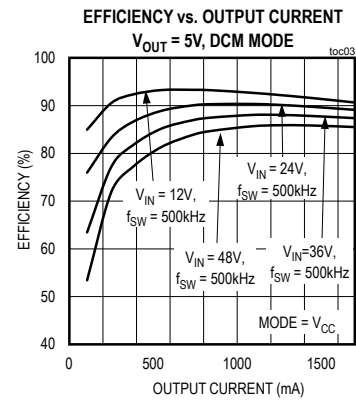
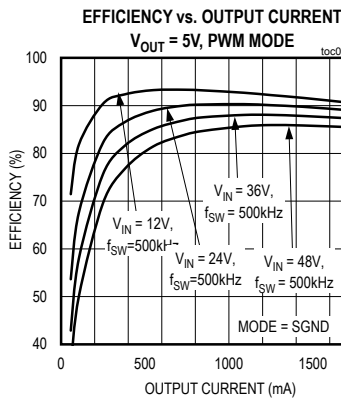
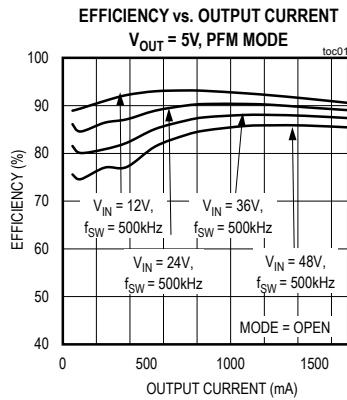
\*Default position.

# MAXM17505 5V Output Evaluation Kit

# Evaluates: MAXM17505 in 5V Output-Voltage Application

## Typical Operating Characteristics

( $V_{IN} = 11V - 60V$ ,  $V_{OUT} = 5V$ ,  $I_{OUT} = 0 - 1.7A$ ,  $T_A = +25^{\circ}C$ , unless otherwise noted.)

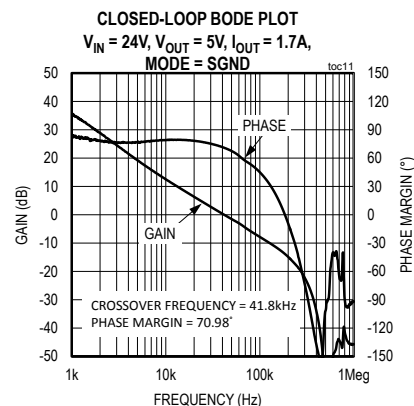
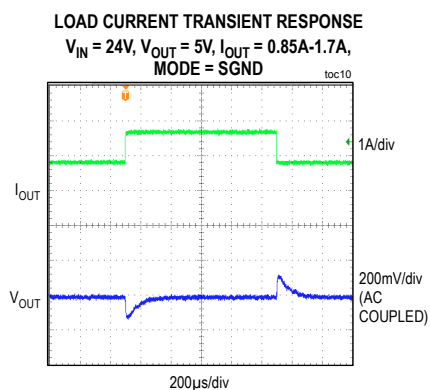
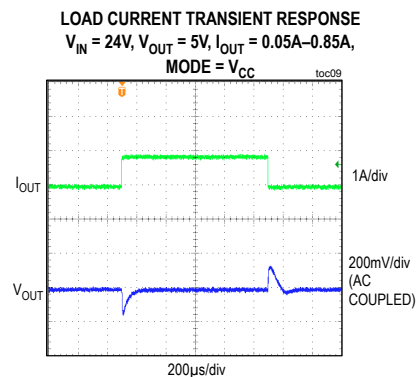
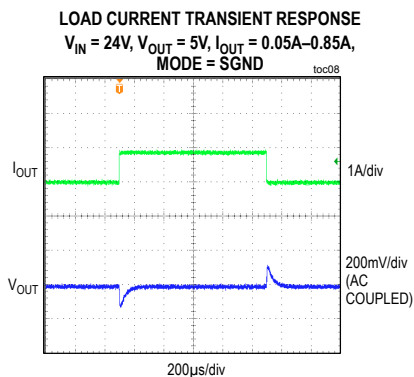


## MAXM17505 5V Output Evaluation Kit

## Evaluates: MAXM17505 in 5V Output-Voltage Application

### Typical Operating Characteristics (continued)

( $V_{IN} = 11V - 60V$ ,  $V_{OUT} = 5V$ ,  $I_{OUT} = 0 - 1.7A$ ,  $T_A = +25^{\circ}C$ , unless otherwise noted.)



## MAXM17505 5V Output Evaluation Kit

Evaluates: MAXM17505 in 5V  
Output-Voltage Application

### Component Suppliers

SUPPLIER	WEBSITE
Murata Americas	<a href="http://www.murata.com">www.murata.com</a>
NEC TOKIN America, Inc.	<a href="http://www.nec-tokinamerica.com">www.nec-tokinamerica.com</a>
Panasonic Corp.	<a href="http://www.panasonic.com">www.panasonic.com</a>
SANYO Electric Co., Ltd.	<a href="http://www.sanyodevice.com">www.sanyodevice.com</a>
TDK Corp.	<a href="http://www.component.tdk.com">www.component.tdk.com</a>
TOKO America, Inc.	<a href="http://www.tokoam.com">www.tokoam.com</a>

**Note:** Indicate that you are using the MAXM17505 when contacting these component suppliers.

### Component List and Schematic

Refer to the following files attached to this data sheet for component information and schematic:

- MAXM17505\_EV\_BOM.xls
- MAXM17505\_EV\_Schematic.pdf

MAXM17505 5V Output  
Evaluation Kit

Evaluates: MAXM17505 in 5V  
Output-Voltage Application

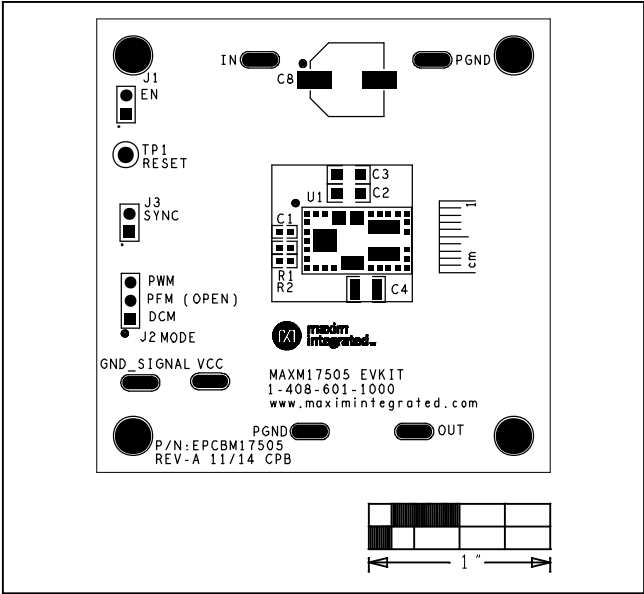


Figure 1. MAXM17505 EV Kit Component Placement Guide—Component Side

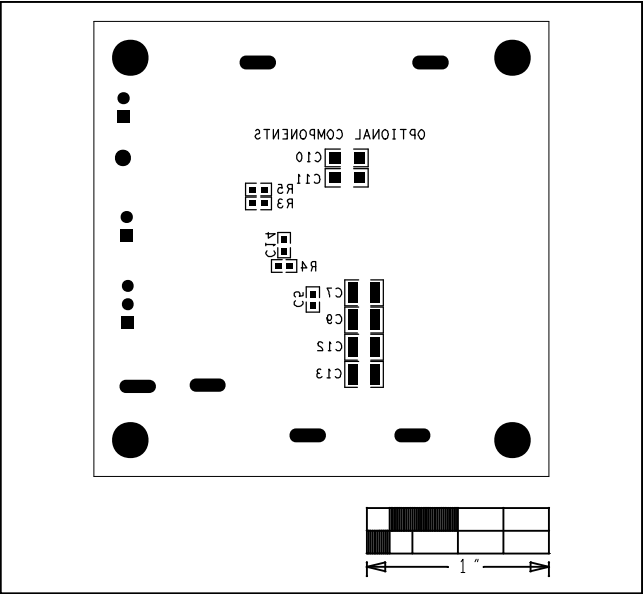


Figure 2. MAXM17505 EV Kit Component Placement Guide—Solder Side

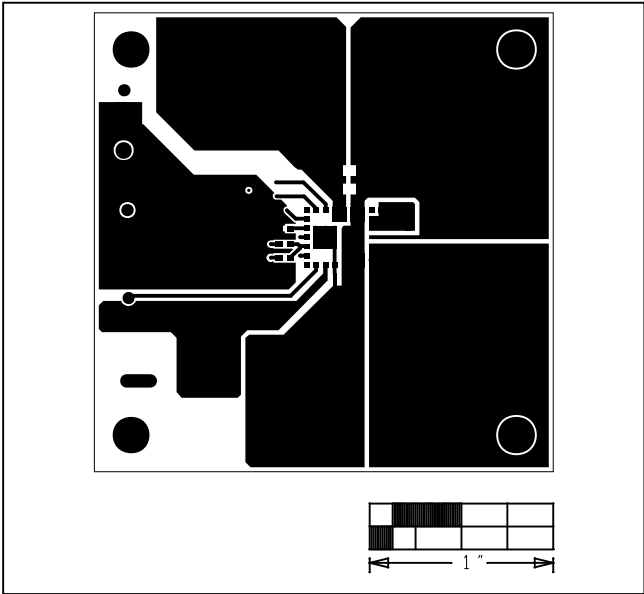


Figure 3. MAXM17505 EV Kit PCB Layout—Component Side

## MAXM17505 5V Output Evaluation Kit

## Evaluates: MAXM17505 in 5V Output-Voltage Application

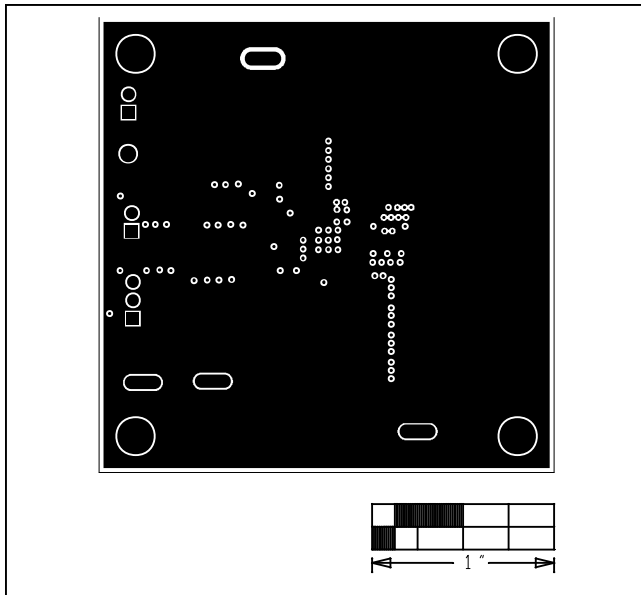


Figure 4. MAXM17505 EV Kit PCB Layout—PGND Layer 2

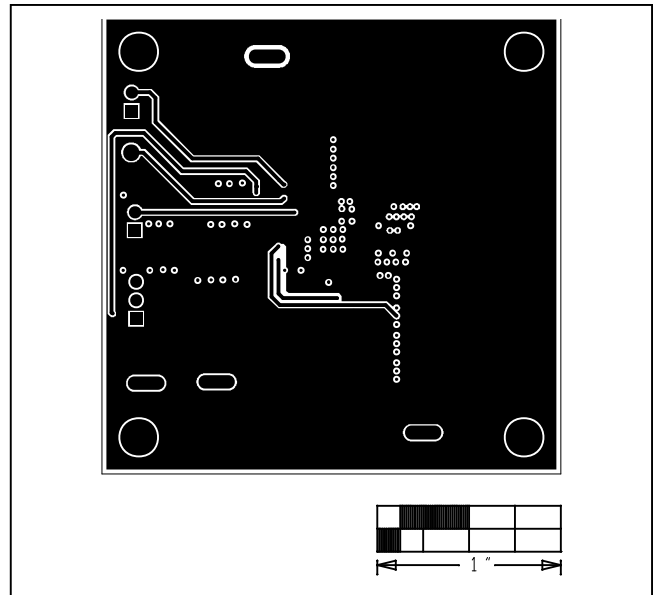


Figure 5. MAXM17505 EV Kit PCB Layout—PGND Layer 3

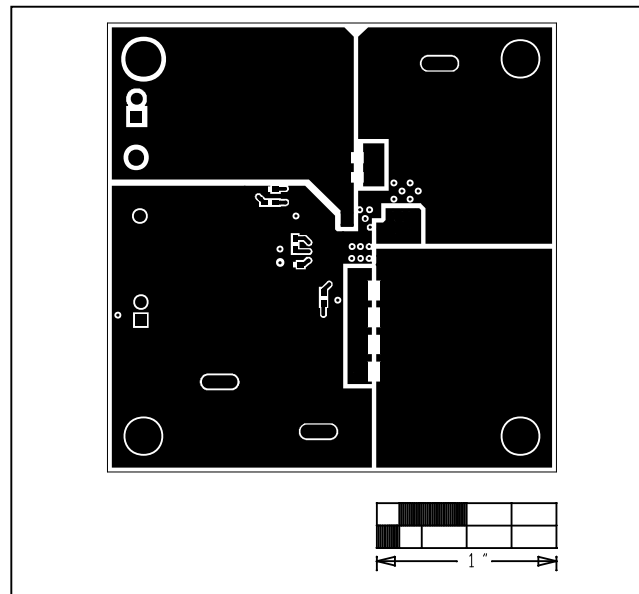


Figure 6. MAXM17505 EV Kit PCB Layout—Solder Side



---

## MAXM17505 5V Output Evaluation Kit

Evaluates: MAXM17505 in 5V  
Output-Voltage Application

### Ordering Information

PART	TYPE
MAXM17505EVKIT#	EV Kit

*#Denotes RoHS compliant.*

---

MAXM17505 5V Output  
Evaluation Kit

Evaluates: MAXM17505 in 5V  
Output-Voltage Application

### Revision History

REVISION NUMBER	REVISION DATE	DESCRIPTION	PAGES CHANGED
0	4/15	Initial release	—

For pricing, delivery, and ordering information, please contact Maxim Direct at 1-888-629-4642, or visit Maxim Integrated's website at [www.maximintegrated.com](http://www.maximintegrated.com).

*Maxim Integrated cannot assume responsibility for use of any circuitry other than circuitry entirely embodied in a Maxim Integrated product. No circuit patent licenses are implied. Maxim Integrated reserves the right to change the circuitry and specifications without notice at any time.*

## Данный компонент на территории Российской Федерации

**Вы можете приобрести в компании MosChip.**

Для оперативного оформления запроса Вам необходимо перейти по данной ссылке:

<http://moschip.ru/get-element>

Вы можете разместить у нас заказ для любого Вашего проекта, будь то серийное производство или разработка единичного прибора.

В нашем ассортименте представлены ведущие мировые производители активных и пассивных электронных компонентов.

Нашей специализацией является поставка электронной компонентной базы двойного назначения, продукции таких производителей как XILINX, Intel (ex.ALTERA), Vicor, Microchip, Texas Instruments, Analog Devices, Mini-Circuits, Amphenol, Glenair.

Сотрудничество с глобальными дистрибьюторами электронных компонентов, предоставляет возможность заказывать и получать с международных складов практически любой перечень компонентов в оптимальные для Вас сроки.

На всех этапах разработки и производства наши партнеры могут получить квалифицированную поддержку опытных инженеров.

Система менеджмента качества компании отвечает требованиям в соответствии с ГОСТ Р ИСО 9001, ГОСТ РВ 0015-002 и ЭС РД 009

### Офис по работе с юридическими лицами:

105318, г.Москва, ул.Щербаковская д.3, офис 1107, 1118, ДЦ «Щербаковский»

Телефон: +7 495 668-12-70 (многоканальный)

Факс: +7 495 668-12-70 (доб.304)

E-mail: [info@moschip.ru](mailto:info@moschip.ru)

Skype отдела продаж:

moschip.ru

moschip.ru\_4

moschip.ru\_6

moschip.ru\_9