

MACP-009011-C80370

E-Series 75 Ohm 8 dB Coupler
5 - 1200 MHz

M/A-COM Products
Revision : V2

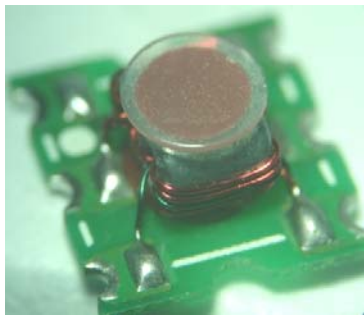
Features

- Coupling 8dB Typical
- Surface Mount
- Low Profile
- Available on Tape and Reel
- Excellent Temperature Stability

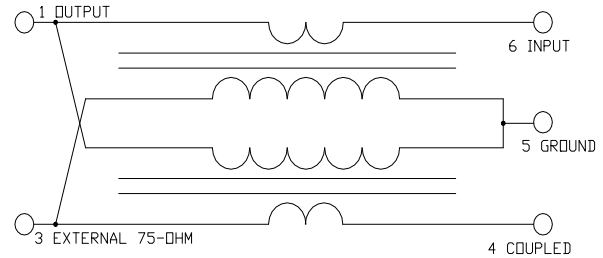
Description

M/A-COM's MACP-009011-C80370 is a high performance 75 Ohm Coupler, in a SM-55A low cost, surface mount package.

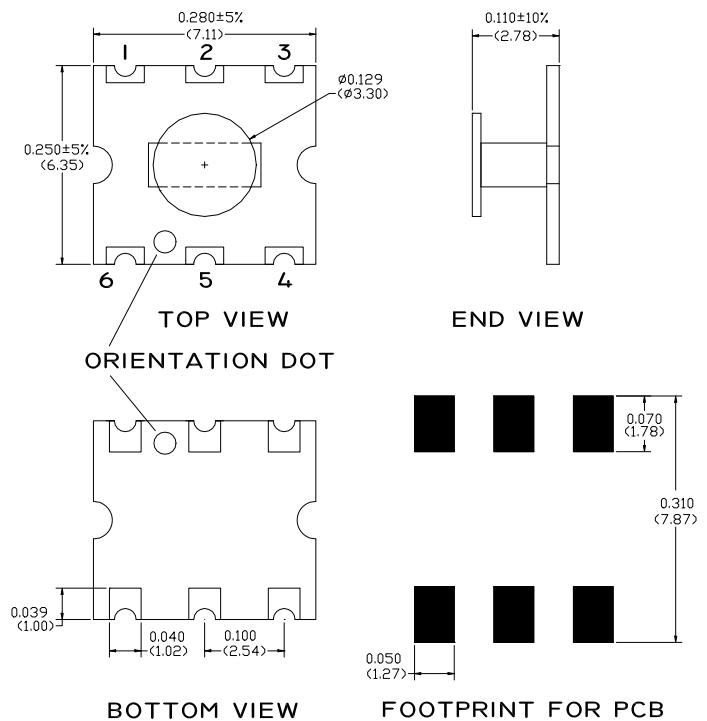
The MACP-009011-C80370 is designed for use in high volume CATV applications. Typical applications include set-top boxes, Network Interface Units, Broadband Amplifiers and head-end equipment.



Schematic



Case Style SM-55A



Dimensions in inches [mm] Tolerance: .xx ± .02, .xxx ± .010

Pin Configuration

Function	Pin Number
Output	1
Not Connected	2
Isolation, external 75-Ohm	3
Coupled	4
Ground	5
Input	6

Ordering Information

Part Number	Function
MACP-009011-C80370	900 parts per reel
MACP-009011-C803TB	Customer test board

1

ADVANCED: Data Sheets contain information regarding a product M/A-COM Technology Solutions is considering for development. Performance is based on target specifications, simulated results, and/or prototype measurements. Commitment to develop is not guaranteed.

PRELIMINARY: Data Sheets contain information regarding a product M/A-COM Technology Solutions has under development. Performance is based on engineering tests. Specifications are typical. Mechanical outline has been fixed. Engineering samples and/or test data may be available. Commitment to produce in volume is not guaranteed.

• **North America** Tel: 800.366.2266 • **Europe** Tel: +353.21.244.6400
 • **India** Tel: +91.80.4155721 • **China** Tel: +86.21.2407.1588
 Visit www.macomtech.com for additional data sheets and product information.

M/A-COM Technology Solutions Inc. and its affiliates reserve the right to make changes to the product(s) or information contained herein without notice.

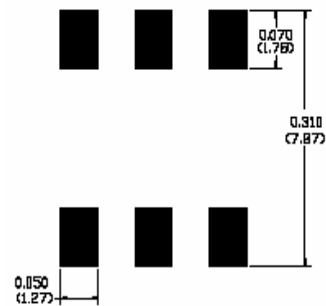
Electrical Specifications: $T_A = 25^\circ\text{C}$, $Z_0 = 75\Omega$

Parameter	Frequency	Units	Min.	Typ.	Max
Frequency Range	5-1200 MHz				
Mainline Loss *	5-870 MHz	dB	2.0	1.5	—
	870-1002 MHz	dB	2.3	1.85	—
	1002-1200 MHz	dB	2.6	2.1	—
Coupling *	5-1002 MHz	dB	8.5	8.3	7.5
	1002-1200 MHz	dB	8.7	8.0	7.3
Coupling flatness	5-1200 MHz	dB	—	0.5	0.8
Directivity	5-870 MHz	dB	—	17.5	11
	870-1200 MHz	dB	—	12.8	9
Return Loss Input	5-50 MHz	dB	—	18.8	17.0
	50-1200MHz	dB	—	18.7	16.5
Return Loss Output	5-50 MHz	dB	—	31.3	23
	50-870 MHz	dB	—	33.5	20
	870-1200 MHz	dB	—	32.0	20
Return Loss Coupled *	5-1200 MHz	dB	—	18.5	16

Absolute Maximum Ratings ¹

Parameter	Absolute Maximum
RF Power	250mW
DC Current	30mA
Operating Temperature	-20° C to + 85° C
Storage Temperature	-20° C to + 85° C

Recommended PCB Configuration



FOOTPRINT FOR PCB

Dimensions in inches [mm] Tolerance: .xx ± .02, .xxx ± .010

* Monitored in production test/tune

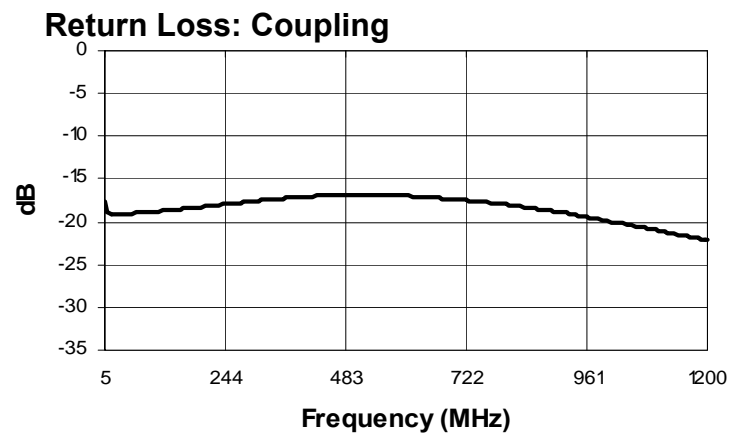
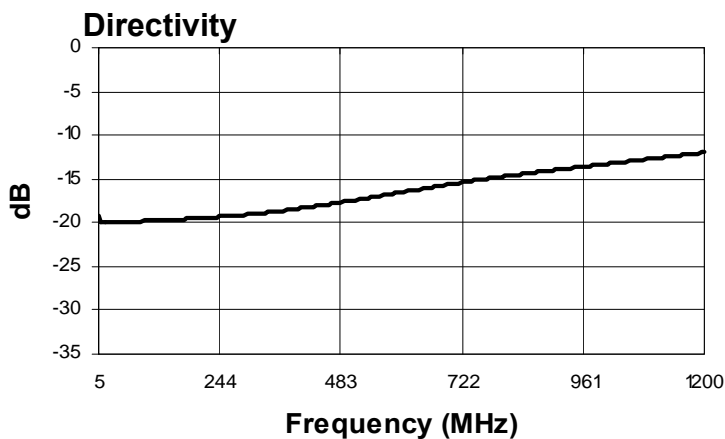
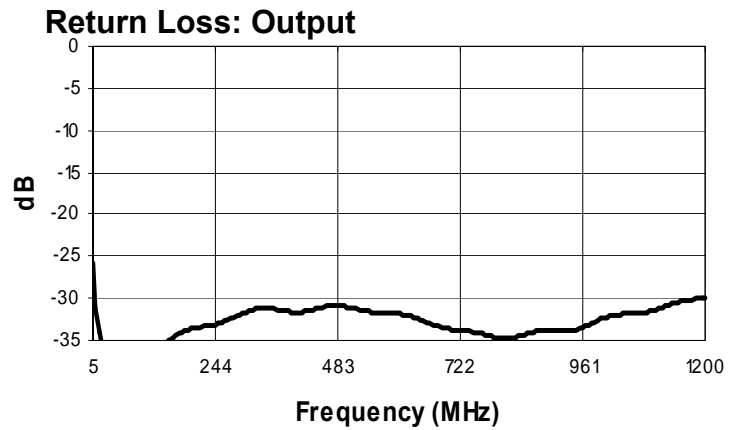
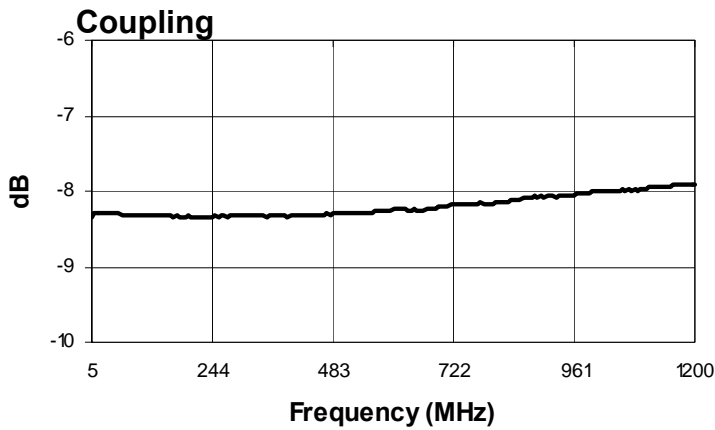
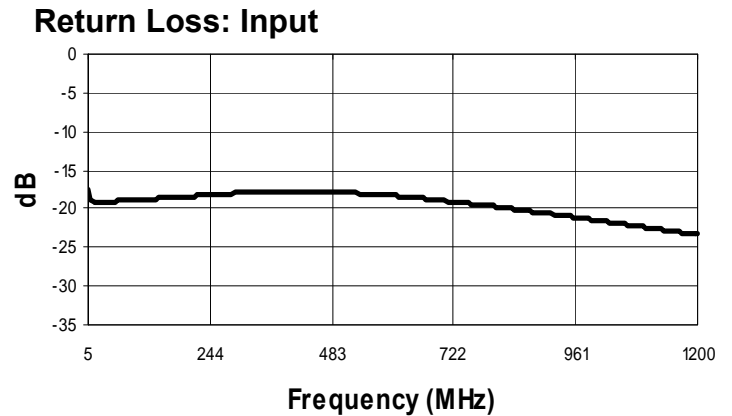
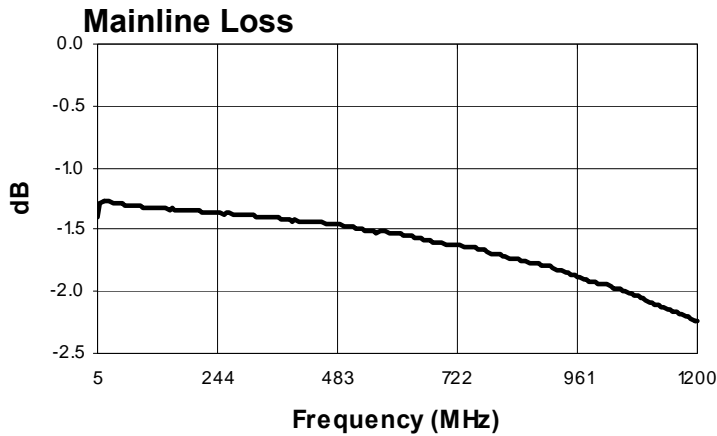
MACP-009011-C80370



E-Series 75 Ohm 8 dB Coupler
5 - 1200 MHz

M/A-COM Products
Revision : V2

Typical Performance: $T_A = 25^\circ\text{C}$, $Z_0 = 75\Omega$



ADVANCED: Data Sheets contain information regarding a product M/A-COM Technology Solutions is considering for development. Performance is based on target specifications, simulated results, and/or prototype measurements. Commitment to develop is not guaranteed.
PRELIMINARY: Data Sheets contain information regarding a product M/A-COM Technology Solutions has under development. Performance is based on engineering tests. Specifications are typical. Mechanical outline has been fixed. Engineering samples and/or test data may be available. Commitment to produce in volume is not guaranteed.

• North America Tel: 800.366.2266 • Europe Tel: +353.21.244.6400
• India Tel: +91.80.4155721 • China Tel: +86.21.2407.1588
Visit www.macomtech.com for additional data sheets and product information.

M/A-COM Technology Solutions Inc. and its affiliates reserve the right to make changes to the product(s) or information contained herein without notice.

Данный компонент на территории Российской Федерации

Вы можете приобрести в компании MosChip.

Для оперативного оформления запроса Вам необходимо перейти по данной ссылке:

<http://moschip.ru/get-element>

Вы можете разместить у нас заказ для любого Вашего проекта, будь то серийное производство или разработка единичного прибора.

В нашем ассортименте представлены ведущие мировые производители активных и пассивных электронных компонентов.

Нашей специализацией является поставка электронной компонентной базы двойного назначения, продукции таких производителей как XILINX, Intel (ex.ALTERA), Vicor, Microchip, Texas Instruments, Analog Devices, Mini-Circuits, Amphenol, Glenair.

Сотрудничество с глобальными дистрибьюторами электронных компонентов, предоставляет возможность заказывать и получать с международных складов практически любой перечень компонентов в оптимальные для Вас сроки.

На всех этапах разработки и производства наши партнеры могут получить квалифицированную поддержку опытных инженеров.

Система менеджмента качества компании отвечает требованиям в соответствии с ГОСТ Р ИСО 9001, ГОСТ РВ 0015-002 и ЭС РД 009

Офис по работе с юридическими лицами:

105318, г.Москва, ул.Щербаковская д.3, офис 1107, 1118, ДЦ «Щербаковский»

Телефон: +7 495 668-12-70 (многоканальный)

Факс: +7 495 668-12-70 (доб.304)

E-mail: info@moschip.ru

Skype отдела продаж:

moschip.ru

moschip.ru_4

moschip.ru_6

moschip.ru_9