

CHERRY MX SILENT RGB RED



Models may vary from the image shown

Silent CHERRY MX-RGB keyswitch with patented (patent pending) noise reduction

Uncompromising. CHERRY MX SILENT RGB keyswitch. The CHERRY original in its quietest and most illuminant form. Patented (patent pending) noise reduction combined with 16.7 million colours and worldwide unique Gold Crosspoint technology.

Key benefits

- RGB red switch: Without pressure point, linear light actuation - switching function with a defined force of approx. 45 cN without contact feedback
- Noise optimised MX-RGB keyswitch version optimised for use with SMD LEDs (RGB or single colour)
- The only solution from a single source: patented (patent pending) noise reduction with integrated 2-component stem and worldwide unique Gold Crosspoint contact technology
- Minimises bottom-out and top out noise.
- Even illumination with optimised, transparent casing and scattering surface including lens.
- Option to use all 16.7 million RGB colours in high luminosity (scope of supply does not include LED)
- SMD LEDs directly mounted on the circuit board for cost-efficient, fully automated production
- Noise reduction takes place in the glass-fibre reinforced base, regardless of 3rd party solutions on the keyswitch.
- Precision "Made in Germany" with a short bounce time of < 5 ms
- Self-cleaning contacts, resistant to dust and dirt
- Over 50 million strokes per keyswitch without compromising

on quality.

- Long-lasting safe switching performance in the renowned "Original CHERRY quality" tried-and-tested a billion times over.

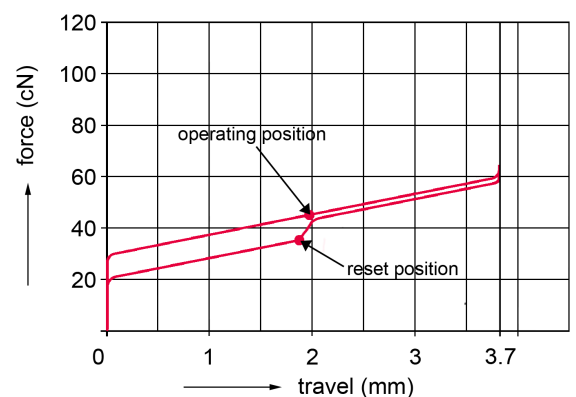
Technical Data:

Housing colour:

Transparent cover, plain base

Keymodule:

- Switch type: MX
- Protection class: IP40
- Operation characteristics: RED SWITCH SILENT Linear (45 cN)



- Fastening: Product dependant, see table "Models"
- Switching voltage: 12 V AC/DC max.
- Switching current: 10 mA AC/DC max.
- Dielectric strength: 500 V / 50Hz
- Durability: > 50 million actuations
- Contact configuration: Single-pole contact
- Actuator travel: 3.7 -0.4 mm
- Pretravel: 1.9 ± 0.6 mm
- Initial force: 30 cN min.
- Actuation force: 45 ± 15 cN
- Bounce time: < 5 ms (during actuation with 0,4 m/s)
- Standard lead spacing: 19.05 mm (16 mm min.)
- Lighting: SMD LED can be mounted directly on the circuit board (not included in the module), opening for SMD LED in the base.
- Decoupling diode: no
- Wire jumper: no
- Insulation materials: Thermoplastics (min.UL 94 HB)
- Spring: Stainless steel
- Contacts: High-quality gold alloy
- Storage Temperature: -40°C to 70°C
- Operating Temperature: -10°C to 70°C
- Humidity: Storage: average <50% max. 3 months / 75% max. 15 days, operation: 5% to 95% without condensation

For detailed information and the layout of the details described above, please do not hesitate to ask for our technical specifications and drawing.

Warranty:

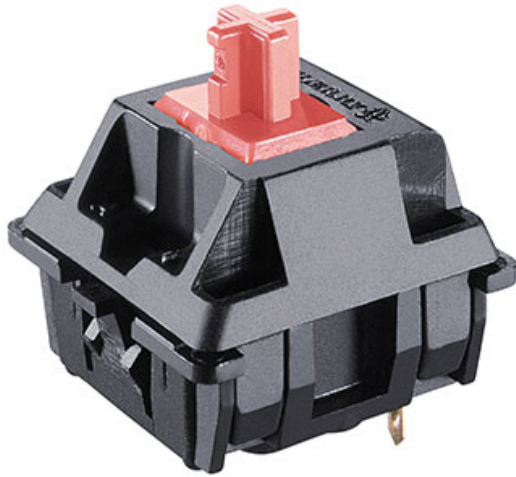
2 years

Errors, technical changes and delivery possibilities excepted.
Technical information refers only to the specifications of the
products. Features may differ from the information provided.

Models:

	Product name	Order number	Fastening
1	CHERRY MX SILENT RGB RED	MX3A-L1NA	Snap fastening in frame
2	CHERRY MX SILENT RGB RED	MX3A-L1NB	Fixing pins in the printed circuit board

CHERRY MX SILENT RED



Models may vary from the image shown

Silent CHERRY MX keyswitch with patented (patent pending) noise reduction

Silent CHERRY MX keyswitch - the original with no compromises. The patented (patent pending) noise reduction reliably minimises any operating noises. This is the most silent form of quality, precision and reliability.

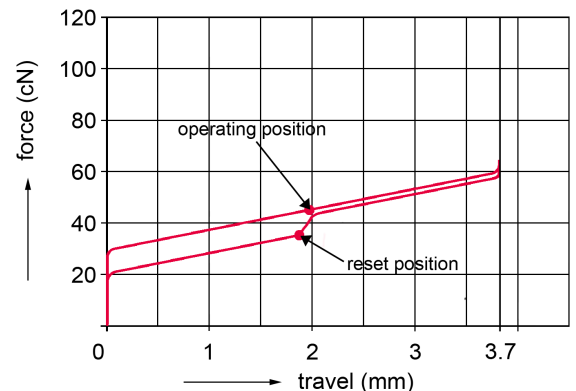
Key benefits

- Red switch: Without pressure point, linear light actuation - switching function with a defined force of approx. 45 cN without contact feedback
- Noise-optimised MX keyswitch version with the worldwide unique Gold Crosspoint contact technology.
- The only solution from a single source: patented (patent pending) noise reduction with integrated 2-component stem.
- Reliable reduction of bottom-out and top out noise
- Noise reduction takes place in the glass-fibre reinforced base, regardless of 3rd party solutions on the keyswitch.
- Precision "Made in Germany" with a short bounce time of < 5 ms
- Self-cleaning contacts, resistant to dust and dirt
- Over 50 million strokes per keyswitch without compromising on quality.
- Long-lasting safe switching performance in the renowned "Original CHERRY quality" tried-and-tested a billion times over.

Technical Data:

Keymodule:

- Switch type: MX
- Protection class: IP40
- Operation characteristics: RED SWITCH SILENT Linear (45 cN)



- Fastening: Product dependant, see table "Models"
- Switching voltage: 12 V AC/DC max.
- Switching current: 10 mA AC/DC max.
- Dielectric strength: 500 V / 50Hz
- Durability: > 50 million actuations
- Contact configuration: Single-pole contact
- Actuator travel: 3.7 -0.4 mm
- Pretravel: 1.9 ± 0.6 mm
- Initial force: 30 cN min.
- Actuation force: 45 ± 15 cN
- Bounce time: < 5 ms (during actuation with 0,4 m/s)
- Standard lead spacing: 19.05 mm (16 mm min.)
- Decoupling diode: Product dependant, see table "Models"
- Wire jumper: Product dependant, see table "Models"
- Insulation materials: Thermoplastics (min.UL 94 HB)
- Spring: Stainless steel
- Contacts: High-quality gold alloy
- Storage Temperature: -40°C to 70°C
- Operating Temperature: -10°C to 70°C
- Humidity: Storage: average <50% max. 3 months / 75% max. 15 days, operation: 5% to 95% without condensation

For detailed information and the layout of the details described above, please do not hesitate to ask for our technical specifications and drawing.

Warranty:

2 years

Errors, technical changes and delivery possibilities excepted. Technical information refers only to the specifications of the products. Features may differ from the information provided.

Models:

	Product name	Order number	Fastening	Decoupling diode	Wire jumper
1	CHERRY MX SILENT RED	MX3A-L1DN	Snap fastening in frame	yes	no
2	CHERRY MX SILENT RED	MX3A-L1DW	Fixing pins in the printed circuit board	yes	no
3	CHERRY MX SILENT RED	MX3A-L1JW	Fixing pins in the printed circuit board	no	yes
4	CHERRY MX SILENT RED	MX3A-L1NN	Snap fastening in frame	no	no
5	CHERRY MX SILENT RED	MX3A-L1NW	Fixing pins in the printed circuit board	no	no

Данный компонент на территории Российской Федерации

Вы можете приобрести в компании MosChip.

Для оперативного оформления запроса Вам необходимо перейти по данной ссылке:

<http://moschip.ru/get-element>

Вы можете разместить у нас заказ для любого Вашего проекта, будь то серийное производство или разработка единичного прибора.

В нашем ассортименте представлены ведущие мировые производители активных и пассивных электронных компонентов.

Нашей специализацией является поставка электронной компонентной базы двойного назначения, продукции таких производителей как XILINX, Intel (ex.ALTERA), Vicor, Microchip, Texas Instruments, Analog Devices, Mini-Circuits, Amphenol, Glenair.

Сотрудничество с глобальными дистрибьюторами электронных компонентов, предоставляет возможность заказывать и получать с международных складов практически любой перечень компонентов в оптимальные для Вас сроки.

На всех этапах разработки и производства наши партнеры могут получить квалифицированную поддержку опытных инженеров.

Система менеджмента качества компании отвечает требованиям в соответствии с ГОСТ Р ИСО 9001, ГОСТ РВ 0015-002 и ЭС РД 009

Офис по работе с юридическими лицами:

105318, г.Москва, ул.Щербаковская д.3, офис 1107, 1118, ДЦ «Щербаковский»

Телефон: +7 495 668-12-70 (многоканальный)

Факс: +7 495 668-12-70 (доб.304)

E-mail: info@moschip.ru

Skype отдела продаж:

moschip.ru

moschip.ru_4

moschip.ru_6

moschip.ru_9