

# Fiber Optic Isolator - Photologic<sup>®</sup> Sensor



## OPI1290 Series

### Features:

- Opaque plastic housings
- High noise immunity
- IR LED with Phototransistor Output
- 0.05" (1.27 mm) lead spacing
- Data Transfer through plastic fiber optic cable
- Isolation voltage 15 KV (OPI1290-032), Longer versions higher



### Description:

Each **OPI1290** consists of an IR LED and a Photologic<sup>®</sup> Totem-Pole output sensor, which are housed in separate opaque molded plastic housings and coupled by plastic fiber optic cable. The heavy-duty opaque housing shields the optical signal from dust, making this series of devices ideal for dust contaminated environments.

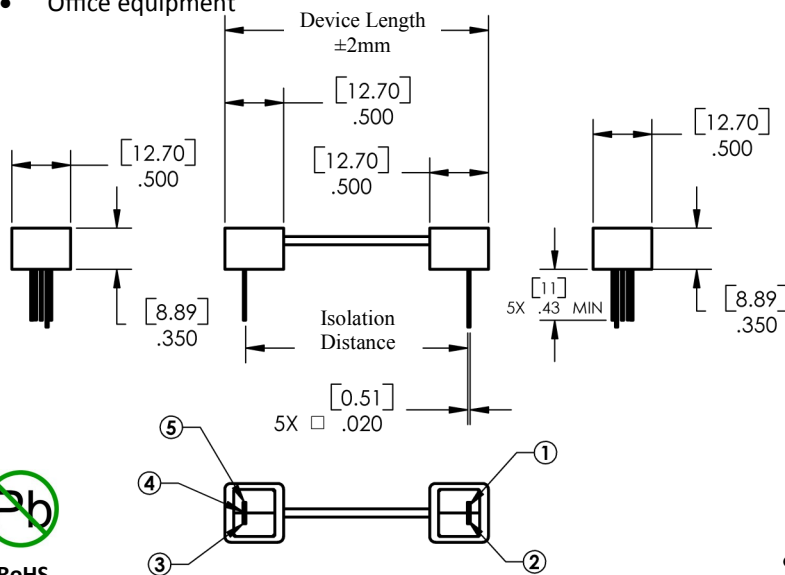
The **OPI1290** series are designed for applications that require high voltage isolation between input and output or signal communication over short distances. Depending on the length of the fiber optic cable, the emitter does not have to be optically in-line with the sensor. The isolation voltage is greater than 10 K volts per inch (Isolation distance between components) for all versions of the **OPI1290**.

Custom electrical, wire and cabling and connectors are available. Contact your local representative or OPTEK for more information.

### Applications:

- Requiring High Voltage isolation between input and output
- Electrical isolation in dirty environments
- Industrial equipment
- Medical equipment
- Office equipment

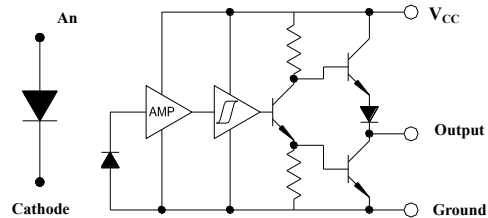
Ordering Information				
Part Number	Isolation Distance ±2mm	Device Length ±2mm	LED Peak Wavelength	Lead Length
OPI1290-032	1.42" [36 mm]	1.80" [45.8 mm]	890 nm	0.45" [11.4 mm]
OPI1290-066	2.76" [70 mm]	3.15" [80.0 mm]		
OPI1290-080	3.31" [84 mm]	3.69" [93.8 mm]		



Pin #	LED
1	Anode
2	Cathode
3	V <sub>CC</sub>
4	Output
5	Ground



RoHS



### General Note

TT Electronics reserves the right to make changes in product specification without notice or liability. All information is subject to TT Electronics' own data and is considered accurate at time of going to print.

TT Electronics | OPTEK Technology  
1645 Wallace Drive, Carrollton, TX 75006 | Ph: +1 972 323 2200  
www.ttelectronics.com | www.optekinc.com

## Absolute Maximum Ratings (T<sub>A</sub>=25°C unless otherwise noted)

Storage Temperature Range (note 3)	-40° C to +80° C
Operating Temperature Range (note 3)	-20° C to +75° C
Lead Soldering Temperature [1/16 inch (1.6 mm) from case for 5 seconds with soldering iron]	260° C <sup>(1)</sup>
Power Dissipation <sup>(2)</sup>	100 mW

## Electrical Characteristics (T<sub>A</sub> = 25°C unless otherwise noted)

SYMBOL	PARAMETER	MIN	TYP	MAX	UNITS	TEST CONDITIONS
<b>LED</b> (See OP240 for additional information)						
V <sub>F</sub>	On-State Collector Current	1.2	-	2.3	V	I <sub>F</sub> = 20 mA
I <sub>R</sub>	Collector-Dark Current	-	-	80	μA	V <sub>R</sub> = 3.0 V

## Photologic<sup>®</sup> Sensor (See OP550 for additional information)

SYMBOL	PARAMETER	MIN	TYP	MAX	UNITS	TEST CONDITIONS
V <sub>CC</sub>	Operating Supply Voltage	4.5	-	16	V	-
	Peak-to-Peak V <sub>CC</sub> Ripple Necessary to Cause False Triggering of Output	-	-	2	V	V <sub>CC</sub> = 5 V DC, f = DC to 50 MHz
I <sub>CC</sub>	Supply Current <sup>(4)</sup>	-	8	15	mA	E <sub>E</sub> = 0 or 3 mW/cm <sup>2</sup> , V <sub>CC</sub> = 5.5 V
E <sub>eT(+)</sub>	Positive-Going Threshold Irradiance <sup>(2)</sup>	.25	-	2.4	mW/cm <sup>2</sup>	V <sub>CC</sub> = 5 V, T <sub>A</sub> = 25° C
E <sub>eT(+)</sub> /E <sub>eT(-)</sub>	Hysteresis Ratio	1.50	2	2.5	-	-
V <sub>OH</sub>	Operating Supply Voltage	2.1	-	-	V	I <sub>OH</sub> = -1 μA, E <sub>E</sub> = 1 mW/cm <sup>2</sup>
V <sub>OL</sub>	Low Level Output Voltage	-	0.25	0.4	V	V <sub>CC</sub> = 4.5 V, I <sub>OL</sub> = 12.8 mA, E <sub>E</sub> = 0
I <sub>OS</sub>	Short Circuit Output Current	-20	-55	-100	mA	V <sub>CC</sub> = 5.5 V, Output = GND, E <sub>E</sub> = 3 mW/cm <sup>2</sup>
I <sub>OH</sub>	High Level Output Current <sup>(2)</sup>	-	1	100	μA	V <sub>CC</sub> = 4.5 V, V <sub>OH</sub> = 30 V, E <sub>E</sub> = 3 mW/cm <sup>2</sup>
T <sub>R</sub> & T <sub>F</sub>	Output Rise & Fall Time	-	25	70	ns	V <sub>CC</sub> = 5 V, T <sub>A</sub> = 25° C, E <sub>E</sub> = 0 or 3 mW/cm <sup>2</sup> , f = 10 kHz, DC = 50% R <sub>L</sub> = 8 TTL loads
tpE <sub>eT(+)</sub>	Propagation Delay Positive-Going	-	2.5	5.0	μs	V <sub>CC</sub> = 5 V, T <sub>A</sub> = 25° C, E <sub>E</sub> = 0 or 3 mW/cm <sup>2</sup> , R <sub>L</sub> = 8 TTL loads, f = 10 kHz, DC = 50%
tpE <sub>eT(-)</sub>	Propagation Delay Negative-Going	-	2.5	5.0	μs	V <sub>CC</sub> = 5 V, T <sub>A</sub> = 25° C, E <sub>E</sub> = 0 or 3 mW/cm <sup>2</sup> , R <sub>L</sub> = 360 Ω, f = 10 kHz, DC = 50%
t <sub>PLH</sub> , t <sub>PHL</sub>	Propagation Delay (Low-High/High-Low)	-	5.0	-	μs	DC = 50%, R <sub>L</sub> = 10 TTL Loads

### Notes:

(1) Derate linearly 2.5 mW/° C above 25° C for all devices in the OPL550, OPL551, OPL560, OPL561, OPL562 and OPL563 series.

(2) Irradiance measurements are made with λ<sub>i</sub> = 935 nm.

(3) Storage and Operating temperature values are based on the plastic optical interface temperature ratings. Please reference UL1577 and UL file AVLVZ.E89328

### General Note

TT Electronics reserves the right to make changes in product specification without notice or liability. All information is subject to TT Electronics' own data and is considered accurate at time of going to print.

TT Electronics | OPTEK Technology  
1645 Wallace Drive, Carrollton, TX 75006 | Ph: +1 972 323 2200  
www.ttelectronics.com | www.optekinc.com

## Данный компонент на территории Российской Федерации

### Вы можете приобрести в компании MosChip.

Для оперативного оформления запроса Вам необходимо перейти по данной ссылке:

<http://moschip.ru/get-element>

Вы можете разместить у нас заказ для любого Вашего проекта, будь то серийное производство или разработка единичного прибора.

В нашем ассортименте представлены ведущие мировые производители активных и пассивных электронных компонентов.

Нашей специализацией является поставка электронной компонентной базы двойного назначения, продукции таких производителей как XILINX, Intel (ex.ALTERA), Vicor, Microchip, Texas Instruments, Analog Devices, Mini-Circuits, Amphenol, Glenair.

Сотрудничество с глобальными дистрибьюторами электронных компонентов, предоставляет возможность заказывать и получать с международных складов практически любой перечень компонентов в оптимальные для Вас сроки.

На всех этапах разработки и производства наши партнеры могут получить квалифицированную поддержку опытных инженеров.

Система менеджмента качества компании отвечает требованиям в соответствии с ГОСТ Р ИСО 9001, ГОСТ РВ 0015-002 и ЭС РД 009

### Офис по работе с юридическими лицами:

105318, г.Москва, ул.Щербаковская д.3, офис 1107, 1118, ДЦ «Щербаковский»

Телефон: +7 495 668-12-70 (многоканальный)

Факс: +7 495 668-12-70 (доб.304)

E-mail: [info@moschip.ru](mailto:info@moschip.ru)

Skype отдела продаж:

moschip.ru

moschip.ru\_4

moschip.ru\_6

moschip.ru\_9