

CONTROL KNOBS, MOLDED PHENOLIC

FEATURES

- Cosmetic black gloss finish.
- Anti-static plastic.
- Positive retention #6-32 set screws.
- Fits 1/8" dia. & 1/4" dia. shafts.
- Functionally rugged.
- Special designs available.

MATERIALS

Knob:

Custom molded phenolic, color black.

Inlay:

Spun aluminum

Threaded Insert:

Brass.

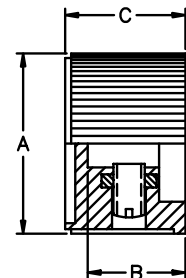
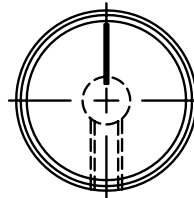
Setscrew:

Heat treated high alloy steel with cup point and hex head, or slotted head. Note: 1 or 2 supplied, depending on model.

Notes: Dimensions in inches & (millimeters). Shaft size is last 3 digits of Model No.

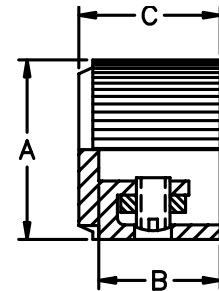
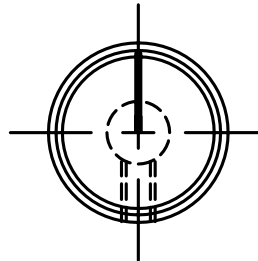
SPECIFICATIONS SUBJECT TO CHANGE WITHOUT NOTICE.

41001 SERIES Straight knurl line indicator on top



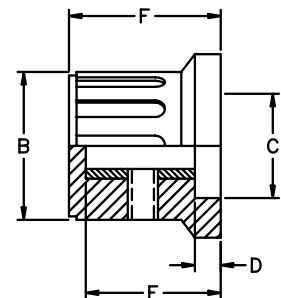
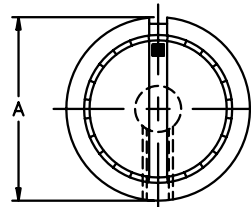
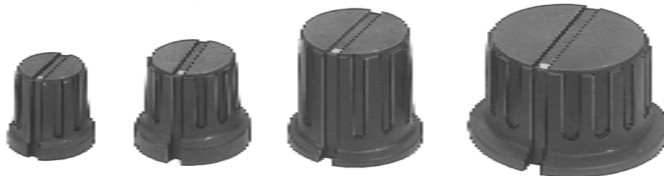
| MODEL | A | B | C |
|------------|-------------|-------------|-------------|
| 410011B1/8 | .787 (20.0) | .512 (13.0) | .630 (16.0) |
| 410011B1/4 | .787 (20.0) | .512 (13.0) | .630 (16.0) |
| 410012B1/4 | .945 (24.0) | .512 (13.0) | .630 (16.0) |

41003 SERIES Straight knurl with aluminum cap & line indicator on top



| MODEL | A | B | C |
|------------|-------------|-------------|-------------|
| 410031B1/8 | .551 (14.0) | .472 (12.0) | .551 (14.0) |
| 410032B1/4 | .716 (18.2) | .496 (12.6) | .555 (14.1) |

41004 SERIES Ribbed without inlay with square indicator on top



Note: This series has matte black finish

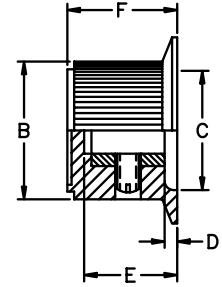
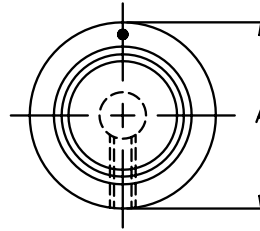
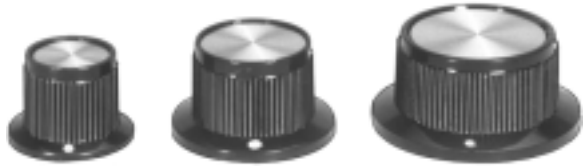
| MODEL | A | B | C | D | E | F |
|--------------|--------------|--------------|-------------|------------|-------------|-------------|
| *410041B1/8 | .610 (15.5) | .500 (12.7) | .374 (9.5) | .122 (3.1) | .472 (12) | .583 (14.8) |
| 410041B1/4 | .610 (15.5) | .500 (12.7) | .374 (9.5) | .122 (3.1) | .472 (12) | .583 (14.8) |
| 410042B1/4 | .799 (20.3) | .646 (16.4) | .443 (11.2) | .130 (3.2) | .575 (14.6) | .618 (15.7) |
| 410043B1/4 | .953 (24.2) | .772 (19.6) | .551 (14) | .209 (5.3) | .705 (17.9) | .784 (19.9) |
| **410044B1/4 | 1.402 (35.6) | 1.106 (28.1) | .898 (22.8) | .078 (2.0) | .574 (14.6) | .722 (18.3) |

* - This model has one #4-40 set screw.

** - This model has two #6-32 set screws.

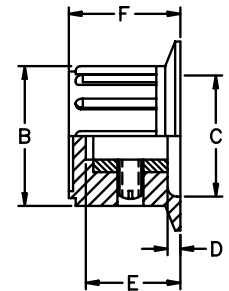
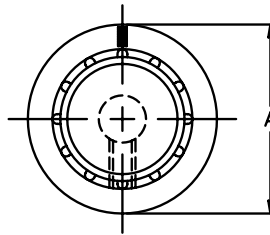
Notes: Dimensions in inches & (millimeters). Shaft size is last 3 digits of Model No.

MPK SERIES Straight knurl with white dot indicator on skirt



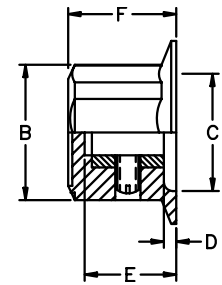
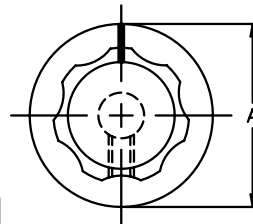
| MODEL | A | B | C | D | E | F |
|-----------|--------------|-------------|-------------|------------|-------------|-------------|
| MPK50B1/8 | .750 (19.0) | .571 (14.5) | .580 (14.7) | .055 (1.4) | .461 (11.7) | .550 (14.0) |
| MPK50B1/4 | .750 (19.0) | .571 (14.5) | .580 (14.7) | .055 (1.4) | .461 (11.7) | .550 (14.0) |
| MPK70B1/4 | 1.000 (25.4) | .740 (18.7) | .710 (18.0) | .080 (2.0) | .500 (12.7) | .580 (15.0) |
| MPK90B1/4 | 1.250 (31.7) | .988 (25.1) | .870 (22.1) | .090 (2.3) | .460 (11.7) | .590 (15.0) |

MPKA SERIES Ribbed with white line indicator on skirt



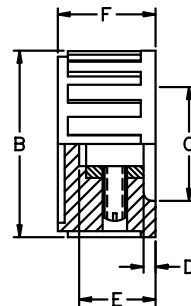
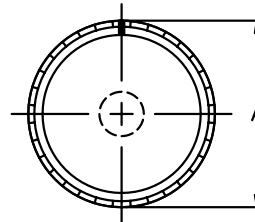
| MODEL | A | B | C | D | E | F |
|------------|--------------|-------------|-------------|------------|-------------|-------------|
| MPKA50B1/8 | .790 (20.0) | .580 (14.7) | .540 (13.7) | .080 (2.0) | .450 (11.4) | .590 (15.0) |
| MPKA50B1/4 | .790 (20.0) | .580 (14.7) | .540 (13.7) | .080 (2.0) | .450 (11.4) | .590 (15.0) |
| MPKA70B1/4 | .980 (24.9) | .580 (14.7) | .472 (12.0) | .160 (4.0) | .580 (14.7) | .677 (17.2) |
| MPKA90B1/4 | 1.360 (34.5) | .960 (24.3) | .680 (17.2) | .200 (5.0) | .740 (18.8) | .850 (21.5) |

MPKES SERIES Fluted with white line indicator on side and skirt



| MODEL | A | B | C | D | E | F |
|--------------|--------------|--------------|--------------|------------|-------------|-------------|
| MPKES60B1/8 | .750 (19.0) | .620 (15.7) | .460 (11.6) | .090 (2.3) | .370 (9.4) | .470 (11.9) |
| MPKES60B1/4 | .750 (19.0) | .620 (15.7) | .460 (11.6) | .090 (2.3) | .370 (9.4) | .470 (11.9) |
| MPKES70B1/4 | .850 (21.5) | .750 (19.0) | .710 (18.1) | .080 (2.0) | .420 (10.6) | .540 (13.7) |
| MPKES90B1/4 | 1.000 (25.4) | .890 (22.6) | .870 (22.1) | .080 (2.0) | .470 (11.9) | .570 (14.4) |
| MPKES120B1/4 | 1.300 (33.0) | 1.160 (29.4) | 1.000 (25.4) | .120 (3.0) | .500 (12.7) | .630 (16.0) |
| MPKES140B1/4 | 1.48 (37.6) | 1.35 (34.3) | .120 (3.0) | .120 (3.0) | .550 (13.9) | .690 (17.5) |

MPKG SERIES Ribbed with white line indicator on side



| MODEL | A | B | C | D | E | F |
|-------------|--------------|--------------|-------------|------------|-------------|-------------|
| MPKG40B1/8 | .440 (11.1) | .410 (10.4) | .320 (8.1) | .080 (2.0) | .380 (9.7) | .470 (11.9) |
| MPKG50B1/8 | .550 (14.0) | .500 (12.7) | .440 (11.1) | .056 (1.4) | .395 (10.0) | .520 (13.2) |
| MPKG50B1/4 | .550 (14.0) | .500 (12.7) | .440 (11.1) | .056 (1.4) | .395 (10.0) | .520 (13.2) |
| MPKG60B1/4 | .660 (16.7) | .610 (15.5) | .550 (14.0) | .080 (2.0) | .430 (10.9) | .550 (14.0) |
| MPKG70B1/4 | .740 (18.8) | .700 (17.8) | .590 (15.0) | .080 (2.0) | .450 (11.4) | .550 (14.0) |
| MPKG90B1/4 | .860 (21.8) | .810 (20.6) | .720 (18.3) | .080 (2.0) | .410 (10.4) | .550 (14.0) |
| MPKG100B1/4 | 1.050 (26.6) | 1.000 (25.4) | .920 (23.3) | .080 (2.0) | .430 (10.9) | .550 (14.7) |
| MPKG125B1/4 | 1.250 (31.8) | 1.200 (30.4) | .690 (17.5) | .080 (2.0) | .430 (10.9) | .580 (14.7) |

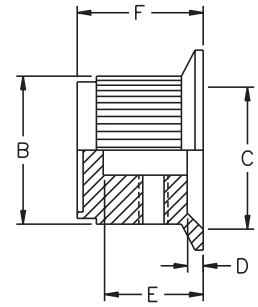
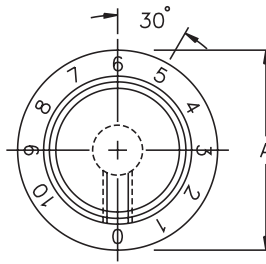
MPKG 90 THRU 125
TWO SET SCREWS

MPKG 40 THRU 70
ONE SET SCREW

SPECIFICATIONS SUBJECT TO CHANGE WITHOUT NOTICE.

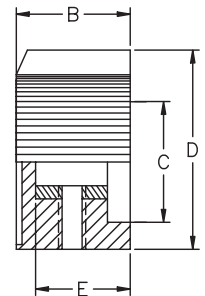
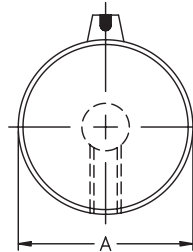
Notes: Dimensions in inches & (millimeters). Shaft size is last 3 digits of Model No.

PKD SERIES Straight knurl with skirt with 0 to 10 numerals



| MODEL | A | B | C | D | E | F |
|--------------|-------------|-------------|-------------|-------------|-------------|-------------|
| PKD60B101/8 | .780 (19.8) | .600 (15.2) | .490 (12.4) | .060 (1.53) | .390 (9.91) | .510 (12.9) |
| PKD60B101/4 | .780 (19.8) | .600 (15.2) | .490 (12.4) | .060 (1.53) | .390 (9.91) | .510 (12.9) |
| PKD70B101/4 | 1.00 (25.4) | .740 (18.8) | .730 (18.5) | .090 (2.29) | .500 (12.7) | .590 (15.0) |
| PKD100B101/4 | 1.29 (32.7) | 1.00 (25.4) | .730 (18.5) | .040 (1.01) | .500 (12.7) | .590 (15.0) |

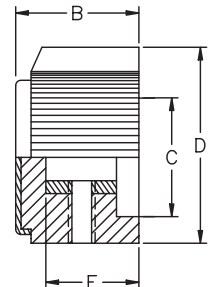
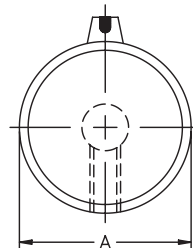
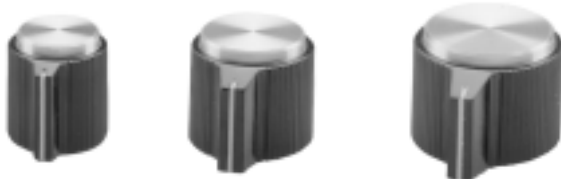
PKJ SERIES Straight knurl with pointer and indicator line on side



| MODEL | A | B | C | D | E |
|------------|-------------|-------------|-------------|-------------|-------------|
| PKJ50B1/8 | .510 (12.9) | .510 (12.9) | .350 (8.89) | .590 (15.0) | .430 (10.9) |
| *PKJ50B1/4 | .510 (12.9) | .510 (12.9) | .350 (8.89) | .590 (15.0) | .430 (10.9) |
| PKJ60B1/4 | .640 (16.2) | .550 (14.0) | .470 (11.9) | .760 (19.3) | .450 (11.4) |
| PKJ70B1/4 | .760 (19.3) | .550 (14.0) | .550 (14.0) | .910 (23.1) | .450 (11.4) |

*- Knob has #4-40 set screw.

PKJT SERIES Straight knurl with pointer and indicator line on side



| MODEL | A | B | C | D | E |
|-------------|-------------|-------------|-------------|-------------|-------------|
| PKJT50B1/8 | .510 (12.9) | .590 (15.0) | .350 (8.89) | .590 (15.0) | .430 (10.9) |
| *PKJT50B1/4 | .510 (12.9) | .590 (15.0) | .350 (8.89) | .590 (15.0) | .430 (10.9) |
| PKJT60B1/4 | .640 (16.2) | .620 (15.7) | .470 (11.9) | .760 (19.3) | .450 (11.4) |
| PKJT70B1/4 | .760 (19.3) | .620 (15.7) | .550 (14.0) | .910 (23.1) | .450 (11.4) |

*- Knob has #4-40 set screw.

SPECIFICATIONS SUBJECT TO CHANGE WITHOUT NOTICE.



Данный компонент на территории Российской Федерации

Вы можете приобрести в компании MosChip.

Для оперативного оформления запроса Вам необходимо перейти по данной ссылке:

<http://moschip.ru/get-element>

Вы можете разместить у нас заказ для любого Вашего проекта, будь то серийное производство или разработка единичного прибора.

В нашем ассортименте представлены ведущие мировые производители активных и пассивных электронных компонентов.

Нашей специализацией является поставка электронной компонентной базы двойного назначения, продукции таких производителей как XILINX, Intel (ex.ALTERA), Vicor, Microchip, Texas Instruments, Analog Devices, Mini-Circuits, Amphenol, Glenair.

Сотрудничество с глобальными дистрибьюторами электронных компонентов, предоставляет возможность заказывать и получать с международных складов практически любой перечень компонентов в оптимальные для Вас сроки.

На всех этапах разработки и производства наши партнеры могут получить квалифицированную поддержку опытных инженеров.

Система менеджмента качества компании отвечает требованиям в соответствии с ГОСТ Р ИСО 9001, ГОСТ РВ 0015-002 и ЭС РД 009

Офис по работе с юридическими лицами:

105318, г.Москва, ул.Щербаковская д.3, офис 1107, 1118, ДЦ «Щербаковский»

Телефон: +7 495 668-12-70 (многоканальный)

Факс: +7 495 668-12-70 (доб.304)

E-mail: info@moschip.ru

Skype отдела продаж:

moschip.ru

moschip.ru_4

moschip.ru_6

moschip.ru_9