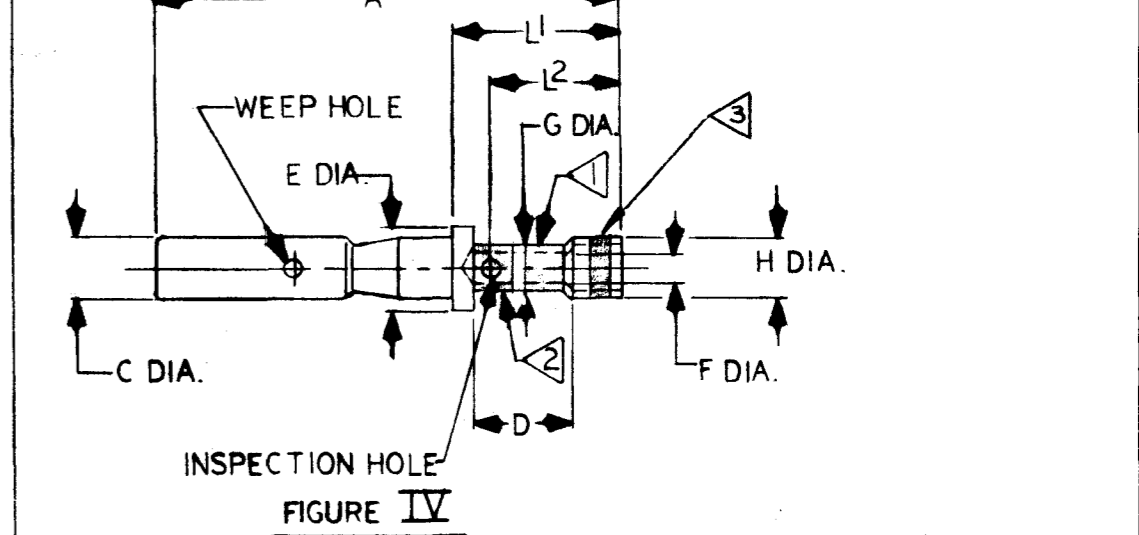
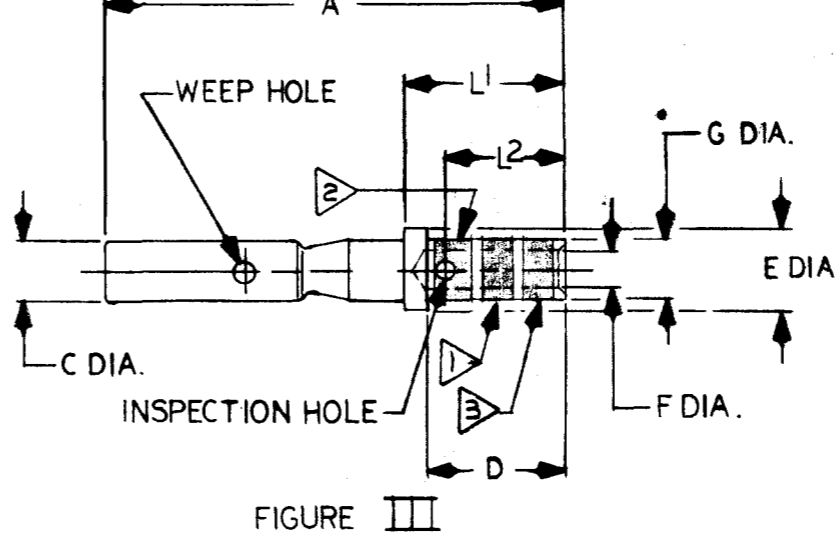
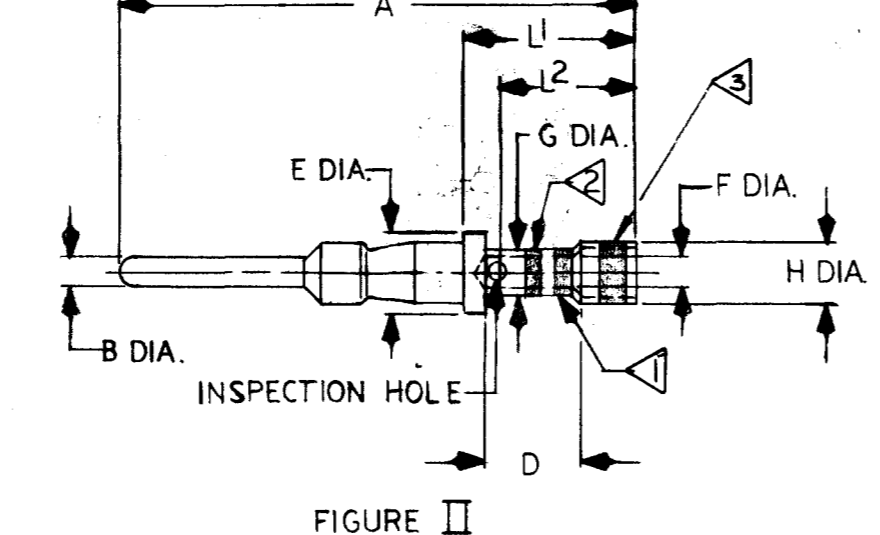
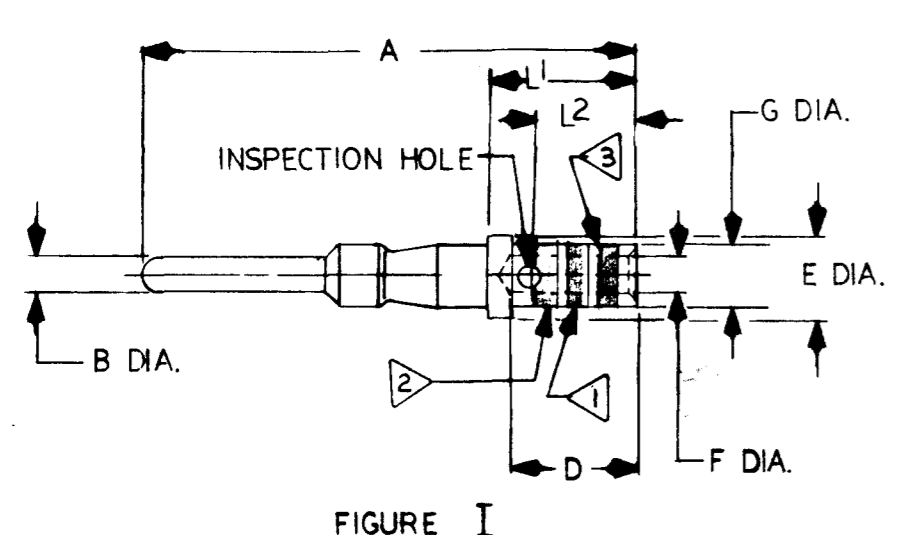
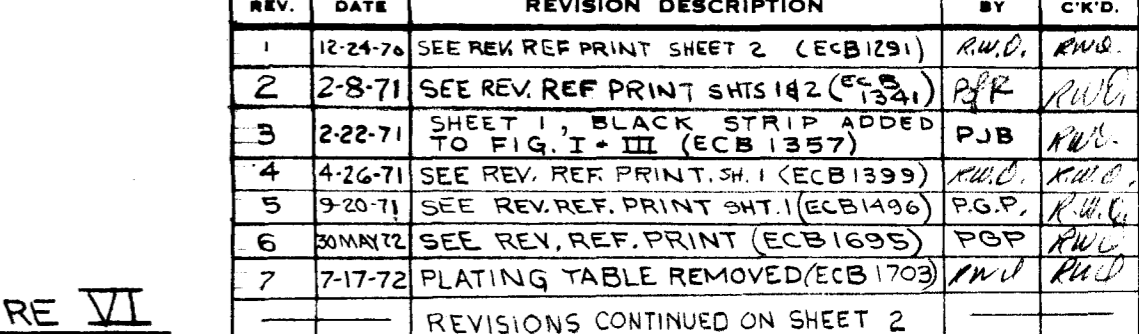
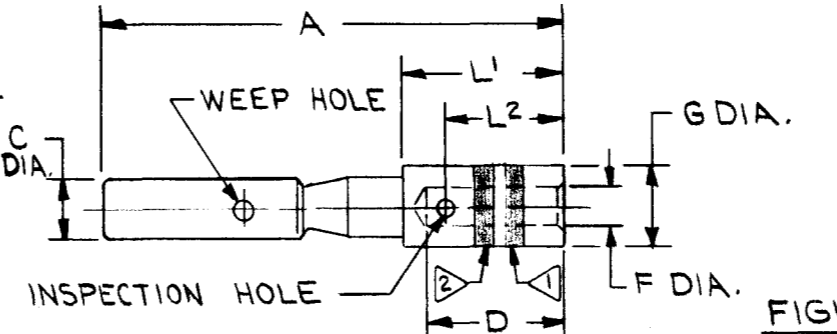
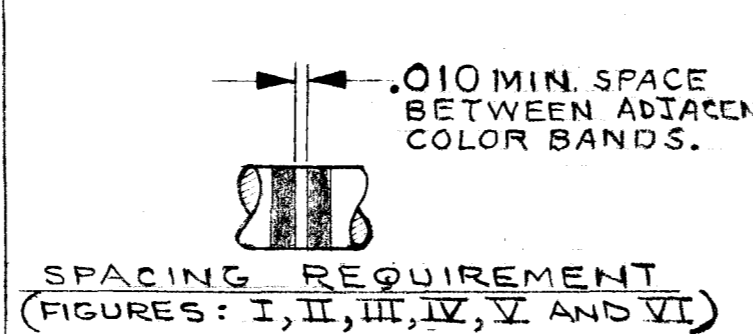
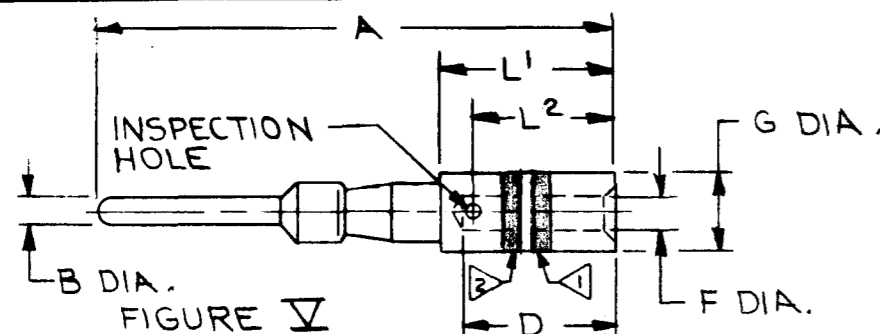


SD71175

REV.	DATE	REVISION DESCRIPTION	BY	C.K.D.
1	12-24-76	SEE REV REF PRINT SHEET 2 (ECB1291)	RWD	RWB
2	2-8-71	SEE REV REF PRINT SHTS 142 (ECB1324)	PJR	RWB
3	2-22-71	SHEET 1, BLACK STRIP ADDED TO FIG. I - III (ECB1357)	PJB	RWB
4	4-26-71	SEE REV REF PRINT SH. 1 (ECB1399)	RWD	RWB
5	9-20-71	SEE REV REF PRINT SH. 1 (ECB1496)	P.G.P.	RWB
6	30MAY72	SEE REV. REF. PRINT (ECB1695)	POP	RWB
7	7-17-72	PLATING TABLE REMOVED (ECB1703)	RWD	RWB
REVISIONS CONTINUED ON SHEET 2				



DOUGLAS CONTACT CATALOG NO.	PIN OR SOCKET	MATING END		WIRE BARREL				TOOLING					FIG.	A	B DIA.	C DIA.	D STRIP LENGTH	E DIA.	F DIA.	G DIA.	H DIA.	WEIGHT LBS./M.	BURNDY CATALOG NUMBER	L1 ±.002	L2 ±.005		
		SIZE	COLOR CODE	SIZE	COLOR CODE	CONDUCTOR		INSULATION		CRIMP TOOL	DIE SET	STOP BUSHING														INSERTION TOOL	EXTRACTION TOOL
						MIN.	MAX.	MIN. DIA.	MAX. DIA.																		
LRM27-5DES	P	12	YELLOW	12	YELLOW	(#14)	(#12)	.112	.146		S-8	SL-4	RTM12-5	RX12-7	I	.905	.094		9/32	202/198	102/098	153/147		3.4	LRM27-5DES	296	220
LRC127-5DES	S													III	.844		161/158	9/32	202/198	102/098	153/147		3.5	LRC127-5DES	296	220	
LRM16M-5DES	P	16	BLUE	16	BLUE	(#20)	(#16)				S-7	SL-2	RTM16-2V2	RX16-7V1	I	.905	.0625		9/32	148/144	068/066	108/101		1.6	LRM16M-5DES	296	220
LRC16M-5DES	S													III	.844		113/110	9/32	148/144	068/066	108/101		1.7	LRC16M-5DES	296	220	
LRM16M-6DES	P	16	BLUE	16	BLUE	(#20)	(#16)	.074	.110		S-7	SL-2	RTM16-2V2	RX16-8	I	1.093	.0625		9/32	148/144	068/066	108/101		2.1	LRM16M-6DES	296	220
LRC16M-6DES	S													III	1.091		113/110	9/32	148/144	068/066	108/101		2.2	LRC16M-6DES	296	220	
LRM16W-2DES	P	20	RED	16	BLUE	(#20)	(#16)				S-7	SL-44	RTM16-2	RX20-24V3	V	.905	.040		9/32		068/066	105/101		.9	LRM16W-2DES	296	220
LRC16W-2DES	S													VI	.844		078/076	9/32		068/066	105/101		1.0	LRC16W-2DES	296	220	
LRM20M-1DES	P	16	BLUE	20	RED	(#24)	(#20)				S-6A	SL-64	RTM20-5 OR RTM20-14	RX16-8	II	.915	.0625		7/32	148/144	050/048	078/076	.105	1.5	LRM20M-1DES	306	246
LRC20M-1DES	S													IV	.854		113/110	7/32	148/144	050/048	078/076	.105	1.6	LRC20M-1DES	306	246	
LRM20M-2DES	P	16	BLUE	20	RED	(#24)	(#20)				S-6A	SL-64	RTM20-5 OR RTM20-14	RX16-8	II	1.103	.0625		7/32	148/144	050/048	078/076	.105	2.0	LRM20M-2DES	306	246
LRC20M-2DES	S													IV	1.101		113/110	7/32	148/144	050/048	078/076	.105	2.1	LRC20M-2DES	306	246	
LRM20W-5DES	P	20	RED	20	RED	(#24)	(#20)		.090		M10S-1		RTM20-5 OR RTM20-14	RX20-24V3	II	.915	.040		7/32	103/100	050/048	078/076	.105	.8	LRM20W-5DES	306	246
LRC20W-5DES	S								.039				RTM20-5 OR RTM20-14	RX20-24V3	IV	.854		078/076	7/32	103/106	050/048	078/076	.105	.9	LRC20W-5DES	306	246
LRM22M-1DES	P	16	BLUE	22	GREEN	(#24)	(#22)				S-6A	SL-64	RTM16-2	RX16-7	II	.915	.0625		7/32	148/144	038/036	066/064	.105	1.7	LRM22M-1DES	306	246
LRC22M-1DES	S												RTM16-2	RX16-8	IV	.854		113/110	7/32	148/144	038/036	066/064	.105	1.8	LRC22M-1DES	306	246
LRM22M-2DES	P	16	BLUE	22	GREEN	(#24)	(#22)		.080		S-6A	SL-64	RTM16-2	RX16-8	II	1.103	.0625		7/32	148/144	038/036	066/064	.105	1.8	LRM22M-2DES	306	246
LRC22M-2DES	S												RTM16-2	RX16-8	IV	1.101		113/110	7/32	148/144	038/036	066/064	.105	2.2	LRC22M-2DES	306	246

PLATING TABLE	
SUFFIX	PLATING
DES	GOLD OVER COPPER

NOTES:

▲▲▲ DENOTES WIRE BARREL.
 ▲▲ DENOTES MATING END.
 BLACK DENOTES 5015 TYPE CONTACT AND IS ONLY APPLICABLE IF 3 APPEARS TO LEFT OF CATALOG NUMBER.

▲ TO ORDER REEL MOUNTED CONTACTS, PRECEDE CONTACT CATALOG NO. WITH "C" - EXAMPLE - CLRC16M-5DES INDICATES LRC16M-5DES CONTACTS MOUNTED IN REELED CARRY STRIP FOR BANDOMATIC ASSEMBLY. REF. ASTM B33-63 AIRCRAFT WIRE ONLY.

▲ FOR NEW CONTACTS REPLACING SUPERSED CONTACTS SEE DWG. SDW1119

IDENTIFICATION STRIPES IN ACCORDANCE WITH:
 MIL-C-23216
 MS 3190
 MS 3192C
 MS 3193B

MATERIAL: BRASS

FSCM NO. 09922

BANTAM PIN AND SOCKET CONTACTS

CAT. NO. LRM/LRC (TABLE)

SCALE

DRAWN: RJR2 10-29-70

CHECKED: [Signature] 11-6-70

DES. APPROV. 11-13-70 C.B.

PROD. APPROV. [Signature] 11-13-70

BURNDY
 NORWALK, CONN. 06852

DRAWING NO. **SD71175**

REV. 13

SHEET 1 OF 2

SD7117S

REV.	DATE	REVISION DESCRIPTION	BY	C.K'D.
12	11-21-83	SHT. 1, NOTE 3, ADDED AND IS ONLY APPLICABLE IF B APPEARS TO LEFT OF CAT. NO. (DC11095)	DA	C.B.
13	3/24/71	REMOVED BR FROM DRAWING # MATERIAL: BRASS PER ECN #328	DAF	SAF

REV.	DATE	REVISION DESCRIPTION	BY	C.K'D.
REVISIONS CONTINUED FROM SHEET 1				
8	3-23-74	SHEET 2, NOTE 'A' WAS NOTE '4' NOTE 'B' ADDED (ECB1968 \$ADD.)	D.L.	P.J.B.
9	4-29-81	SHTS 1 & 2, SEE REV. REF. (ECC4269) PRINT.	L.H.	SFP
10	9-15-81	SHTS 1 & 2 SEE REV. REF. (QC10,666) PRINTS	L.H.	SFP
11	9/9/83	ADDED NOTE 6, SUPERSEDED CAT. NO'S. LRM1223DES, LRC1223DES, LRM16M23DES, LRC16M23DES, LRM20W23DES, LRC20W23DES PER ECW1395	S.E.	CEB

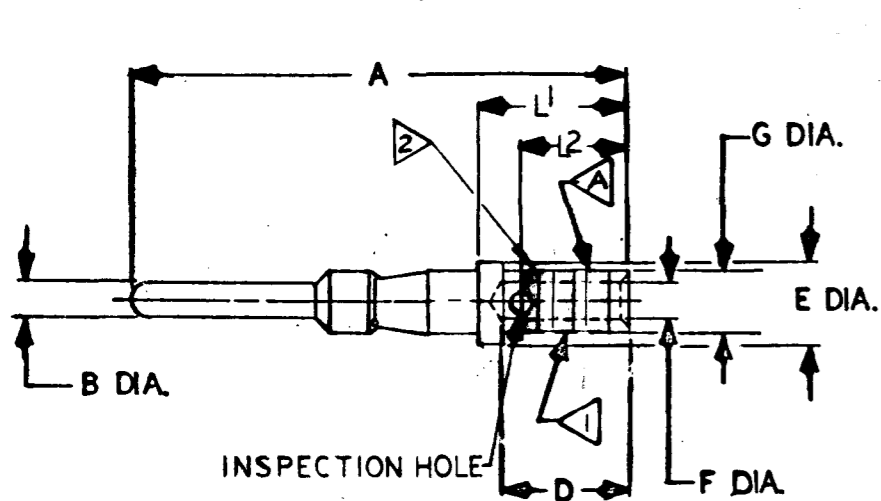


FIGURE I

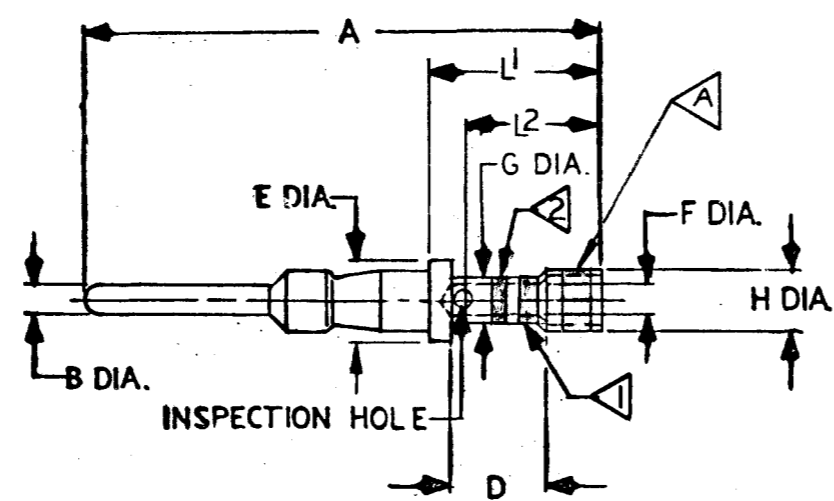


FIGURE II

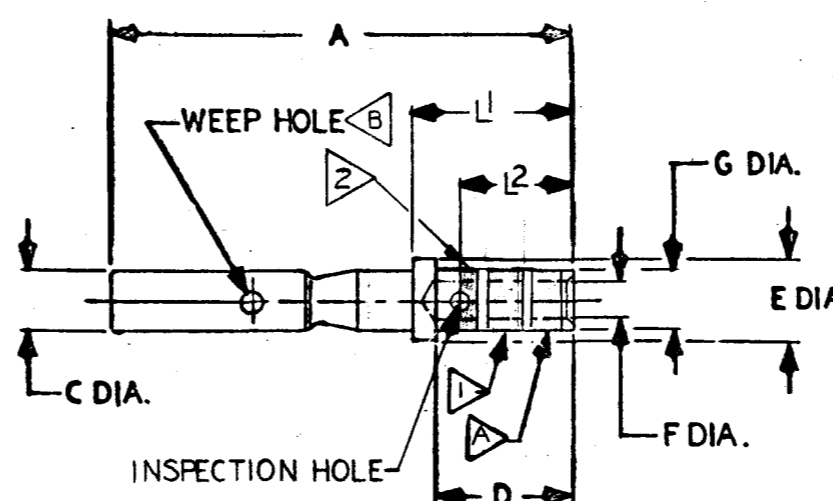


FIGURE III

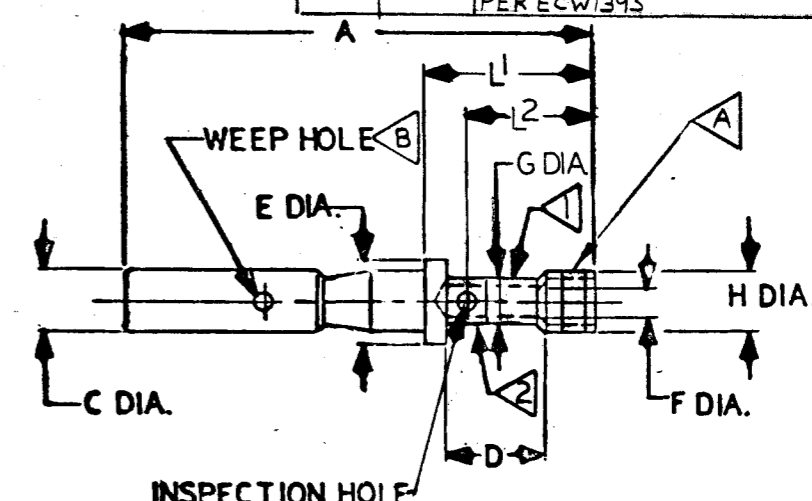


FIGURE IV

CONTACT CATALOG NO.	PIN OR SOCKET	MATING END		WIRE BARREL				TOOLING					FIG.	A ±.010	B DIA. ±.001	C DIA.	D STRIP LENGTH	E DIA.	F DIA. ±.001	G DIA.	H DIA. ±.001	MATERIAL	WEIGHT LBS/M	FINISH	L1 ±.002	L2 ±.005																																																																		
		SIZE	COLOR CODE	SIZE	COLOR CODE	MIN.	MAX.	PER	CRIMP TOOL	DIE SET	STOP BUSHING	INSERTION TOOL															EXTRACTION TOOL																																																																	
		SIZE	COLOR CODE	MIN.	MAX.	PER	CRIMP TOOL	DIE SET	STOP BUSHING	INSERTION TOOL	EXTRACTION TOOL																																																																																	
LRM16M-9	P	16	BLUE	16	BLUE	.038	.057	REGULAR GRADE THERMOCOUPLE WIRE PER MIL-W-5846 TYPE 1, CLASS D,E	M10S-1	S7	SL2	RTM16-2	RX16-7	I	.905	.0625	—	9/32	.148/.144	.067	.105/.101	ALUMEL	1.7	NONE	.296	.220																																																																		
LRC16M-9	S	16	BLUE	16	BLUE	#20	#16	—						—	—	—	III	.844									—	.113/.110	9/32	—	—	—	—	—	—	—	—	—	—	—																																																				
LRM16M-10	P	16	BLUE	16	BLUE	.038	.057	REGULAR GRADE THERMOCOUPLE WIRE PER MIL-W-5846 TYPE 1, CLASS D,E						M10S-1	S7	SL2	RTM16-2	RX16-7									I	.905	.0625	—	9/32	.148/.144	.067	.105/.101	CHROMEL	1.7	NONE	.296	.220																																																					
LRC16M-10	S	16	BLUE	16	BLUE	#20	#16	—																			—	—	—	III	.844									—	.113/.110	9/32	—	—	—	—	—	—	—	—	—	—	—																																							
LRM16M-11	P	16	BLUE	16	BLUE	.038	.057	THERMOCOUPLE WIRE PER MIL-W-5845 TYPE 1, CLASS D,E																			M10S-1	S7	SL2	RTM16-2	RX16-7									I	.905	.0625	—	9/32	.148/.144	.067	.105/.101	IRON	1.4	CAD PLATE	.296	.220																																								
LRC16M-11	S	16	BLUE	16	BLUE	#20	#16	—																																—	—	—	III	.844									—	.113/.110	9/32	—	—	—	—	—	—	—	—	—	—	—																										
LRM16M-12	P	16	BLUE	16	BLUE	.038	.057	THERMOCOUPLE WIRE PER MIL-W-5845 TYPE 1, CLASS D,E																																M10S-1	S7	SL2	RTM16-2	RX16-7									I	.905	.0625	—	9/32	.148/.144	.067	.105/.101	CONSTANTAN	1.7	NONE	.296	.220																											
LRC16M-12	S	16	BLUE	16	BLUE	#20	#16	—																																													—	—	—	III	.844									—	.113/.110	9/32	—	—	—	—	—	—	—	—	—	—	—													
LRM20W-9	P	20	RED	20	RED	.024	.038	REGULAR GRADE THERMOCOUPLE WIRE PER MIL-W-5846 TYPE 1, CLASS D,E																																													M10S-1	S6A	SL-3A	RTM20-5	RX20-24V3									II	.915	.040	—	7/32	.103/.100	.049	.105	ALUMEL	.8	NONE	.306	.246														
LRC20W-9	S	20	RED	20	RED	#24	#20	—																																																										—	—	—	IV	.854									—	.078/.076	7/32	—	—	—	—	—	—	—	—	—	—	—
LRM20W-10	P	20	RED	20	RED	.024	.038	REGULAR GRADE THERMOCOUPLE WIRE PER MIL-W-5846 TYPE 1, CLASS D,E																																																										M10S-1	S6A	SL-3A	RTM20-5	RX20-24V3									II	.915	.040	—	7/32	.103/.100	.049	.105	CHROMEL	.8	NONE	.306	.246	
LRC20W-10	S	20	RED	20	RED	#24	#20	—																																																																							—	—	—	IV	.854									—
LRM20W-11	P	20	RED	20	RED	.024	.038	THERMOCOUPLE WIRE PER MIL-W-5845 TYPE 1, CLASS D,E	M10S-1	S6A	SL-3A	RTM20-5	RX20-24V3						II	.915	.040	—	7/32	.103/.100	.049	.105																																																					IRON	.7	CAD PLATE	.306	.246									
LRC20W-11	S	20	RED	20	RED	#24	#20	—											—	—	—	IV	.854																																																																					—
LRM20W-12	P	20	RED	20	RED	.024	.038	THERMOCOUPLE WIRE PER MIL-W-5845 TYPE 1, CLASS D,E						M10S-1	S6A	SL-3A	RTM20-5	RX20-24V3	II	.915	.040	—	7/32									.103/.100	.049	.105	CONSTANTAN	.8	NONE	.306	.246																																																					
LRC20W-12	S	20	RED	20	RED	#24	#20	—											—	—	—	IV	.854																																																																					—

NOTES:

- ▲ GREEN DENOTES ALUMEL
- ▲ WHITE DENOTES CHROMEL
- ▲ YELLOW DENOTES CONSTANTAN
- ▲ BLACK DENOTES IRON

▲ WEEP HOLE ON LRC16M-11 AND LRC20W-11 ONLY.

▲ CONSULT FACTORY FOR AVAILABILITY.

THERMOCOUPLE CONTACTS ONLY

FSCM NO. 09922

THERMOCOUPLE CONTACTS		SCALE	
BANTAM PIN AND SOCKET CONTACTS		1:1	
CAT. NO. LRM/LRC --- (TABLE)			
DRAWN	CHECKED	DES. APPROV.	
RJR2	10-29-70	11-6-70 C.B.	
PROD. APPROV.		DRAWING NO.	
11-13-70		SD7117S13	
BURNODY		SHEET 2 OF 2	
NORWALK, CONN. 06852		DOB-1069	

Данный компонент на территории Российской Федерации

Вы можете приобрести в компании MosChip.

Для оперативного оформления запроса Вам необходимо перейти по данной ссылке:

<http://moschip.ru/get-element>

Вы можете разместить у нас заказ для любого Вашего проекта, будь то серийное производство или разработка единичного прибора.

В нашем ассортименте представлены ведущие мировые производители активных и пассивных электронных компонентов.

Нашей специализацией является поставка электронной компонентной базы двойного назначения, продукции таких производителей как XILINX, Intel (ex.ALTERA), Vicor, Microchip, Texas Instruments, Analog Devices, Mini-Circuits, Amphenol, Glenair.

Сотрудничество с глобальными дистрибьюторами электронных компонентов, предоставляет возможность заказывать и получать с международных складов практически любой перечень компонентов в оптимальные для Вас сроки.

На всех этапах разработки и производства наши партнеры могут получить квалифицированную поддержку опытных инженеров.

Система менеджмента качества компании отвечает требованиям в соответствии с ГОСТ Р ИСО 9001, ГОСТ РВ 0015-002 и ЭС РД 009

Офис по работе с юридическими лицами:

105318, г.Москва, ул.Щербаковская д.3, офис 1107, 1118, ДЦ «Щербаковский»

Телефон: +7 495 668-12-70 (многоканальный)

Факс: +7 495 668-12-70 (доб.304)

E-mail: info@moschip.ru

Skype отдела продаж:

moschip.ru

moschip.ru_4

moschip.ru_6

moschip.ru_9