

# Altech Corp.®

*Serving the Automation & Control Industry since 1984*



Quality  
Endorsed  
Company



**Wire Duct**



## Standard Slot

### Supplied with lid

| nominal size<br>w x h<br>inches | external dimensions  |                       | part no. selection |               |                |                | standard pack                 |               |
|---------------------------------|----------------------|-----------------------|--------------------|---------------|----------------|----------------|-------------------------------|---------------|
|                                 | width<br>inches (mm) | height<br>inches (mm) | gray<br>PVC        | white<br>PVC  | black<br>PVC   | blue<br>PVC    | no. of lengths<br>6 1/2' each | total<br>feet |
| 1" x 1 1/2"                     | 1.14 (29)            | 1.61 (41)             | B25x40S-R          | B25x40S/W-R   | B25x40S/BL-R   | –              | 12                            | 78            |
| 1" x 2"                         | 1.14 (29)            | 2.13 (54)             | B25x60S-R          | B25x60S/W-R   | B25x60S/BL-R   | B25x60S/BU-R   | 12                            | 78            |
| 1" x 3"                         | 1.14 (29)            | 3.11 (79)             | B25x80S-R          | B25x80S/W-R   | B25x80S/BL-R   | B25x80S/BU-R   | 8                             | 52            |
| 1" x 4"                         | 1.18 (30)            | 4.13 (105)            | B25x100S-R         | B25x100S/W-R  | B25x100S/BL-R  | B25x100S/BU-R  | 8                             | 52            |
| 1 1/2" x 1 1/2"                 | 1.61 (41)            | 1.61 (41)             | B40x40S-R          | B40x40S/W-R   | B40x40S/BL-R   | –              | 12                            | 78            |
| 1 1/2" x 2"                     | 1.61 (41)            | 2.13 (54)             | B40x60S-R          | B40x60S/W-R   | B40x60S/BL-R   | B40x60S/BU-R   | 8                             | 52            |
| 1 1/2" x 3"                     | 1.54 (39)            | 3.11 (79)             | B40x80S-R          | B40x80S/W-R   | B40x80S/BL-R   | B40x80S/BU-R   | 8                             | 52            |
| 1 1/2" x 4"                     | 1.69 (43)            | 4.13 (105)            | B40x100S-R         | B40x100S/W-R  | B40x100S/BL-R  | B40x100S/BU-R  | 8                             | 52            |
| 2" x 1"                         | 2.13 (54)            | 1.10 (28)             | B60x25S-R          | B60x25S/W-R   | B60x25S/BL-R   | –              | 12                            | 78            |
| 2" x 1 1/2"                     | 2.13 (54)            | 1.61 (41)             | B60x40S-R          | B60x40S/W-R   | B60x40S/BL-R   | –              | 8                             | 52            |
| 2" x 2"                         | 2.13 (54)            | 2.13 (54)             | B60x60S-R          | B60x60S/W-R   | B60x60S/BL-R   | B60x60S/BU-R   | 8                             | 52            |
| 2" x 3"                         | 2.17 (55)            | 3.11 (79)             | B60x80S-R          | B60x80S/W-R   | B60x80S/BL-R   | B60x80S/BU-R   | 8                             | 52            |
| 2" x 4"                         | 2.20 (56)            | 4.13 (105)            | B60x100S-R         | B60x100S/W-R  | B60x100S/BL-R  | –              | 4                             | 26            |
| 3" x 1 1/2"                     | 3.15 (80)            | 1.61 (41)             | B80x40S-R          | B80x40S/W-R   | B80x40S/BL-R   | –              | 8                             | 52            |
| 3" x 2"                         | 3.07 (78)            | 2.13 (54)             | B80x60S-R          | B80x60S/W-R   | B80x60S/BL-R   | –              | 8                             | 52            |
| 3" x 3"                         | 3.15 (80)            | 3.15 (80)             | B80x80S-R          | B80x80S/W-R   | B80x80S/BL-R   | B80x80S/BU-R   | 8                             | 52            |
| 3" x 4"                         | 3.15 (80)            | 4.13 (105)            | B80x100S-R         | B80x100S/W-R  | B80x100S/BL-R  | B80x100S/BU-R  | 4                             | 26            |
| 4" x 2"                         | 4.21 (107)           | 2.13 (54)             | B100x60S-R         | B100x60S/W-R  | B100x60S/BL-R  | –              | 4                             | 26            |
| 4" x 3"                         | 4.21 (107)           | 3.15 (80)             | B100x80S-R         | B100x80S/W-R  | B100x80S/BL-R  | B100x80S/BU-R  | 4                             | 26            |
| 4" x 4"                         | 4.21 (107)           | 4.09 (104)            | B100x100S-R        | B100x100S/W-R | B100x100S/BL-R | B100x100S/BU-R | 4                             | 26            |
| 4" x 5"                         | 4.21 (107)           | 5.12 (130)            | B100x130S-R        | B100x130S/W-R | B100x130S/BL-R | –              | 4                             | 26            |
| 5" x 3"                         | 5.16 (131)           | 3.07 (78)             | B130x80S-R         | B130x80S/W-R  | B130x80S/BL-R  | –              | 4                             | 26            |

#### MATERIAL

self extinguishing PVC

#### SERVICE TEMPERATURE

+5° F to +140° F (-15° C to +60° C)

#### STANDARDS

base slots to DIN 43659

#### STANDARD COLORS

gray, white, black & blue

#### FLAMMABILITY

UL94 V-O rated material



*Serving the Automation & Control Industry Since 1984*

Altech Corp® • 908.806.9400 • 908.806.9490 (fax) • [www.altechcorp.com](http://www.altechcorp.com)



## Thin Slot

### Supplied with lid

| nominal size<br>w x h<br>inches | external dimensions  |                       | part no. selection |               |                | carton quantity               |               |
|---------------------------------|----------------------|-----------------------|--------------------|---------------|----------------|-------------------------------|---------------|
|                                 | width<br>inches (mm) | height<br>inches (mm) | gray<br>PVC        | white<br>PVC  | black<br>PVC   | no. of lengths<br>6 1/2' each | total<br>feet |
| 1" x 1 1/2"                     | 1.14 (29)            | 1.61(41)              | B25x40T-R          | B25x40T/W-R   | B25x40T/BL-R   | 12                            | 78            |
| 1" x 2"                         | 1.14 (29)            | 2.13 (54)             | B25x60T-R          | B25x60T/W-R   | B25x60T/BL-R   | 12                            | 78            |
| 1" x 3"                         | 1.14 (29)            | 3.11 (79)             | B25x80T-R          | B25x80T/W-R   | B25x80T/BL-R   | 8                             | 52            |
| 1" x 4"                         | 1.18 (30)            | 4.13 (105)            | B25x100T-R         | B25x100T/W-R  | B25x100T/BL-R  | 8                             | 52            |
| 1 1/2" x 1 1/2"                 | 1.61 (41)            | 1.61 (41)             | B40x40T-R          | B40x40T/W-R   | B40x40T/BL-R   | 12                            | 78            |
| 1 1/2" x 2"                     | 1.61 (41)            | 2.13 (54)             | B40x60T-R          | B40x60T/W-R   | B40x60T/BL-R   | 8                             | 52            |
| 1 1/2" x 3"                     | 1.61 (41)            | 3.11 (79)             | B40x80T-R          | B40x80T/W-R   | B40x80T/BL-R   | 8                             | 52            |
| 1 1/2" x 4"                     | 1.69 (43)            | 4.13 (105)            | B40x100T-R         | B40x100T/W-R  | B40x100T/BL-R  | 8                             | 52            |
| 2" x 1 1/2"                     | 2.20 (56)            | 1.61 (41)             | B60x40T-R          | B60x40T/W-R   | B60x40T/BL-R   | 8                             | 52            |
| 2" x 2"                         | 2.13 (54)            | 2.13 (54)             | B60x60T-R          | B60x60T/W-R   | B60x60T/BL-R   | 8                             | 52            |
| 2" x 3"                         | 2.17 (55)            | 3.11 (79)             | B60x80T-R          | B60x80T/W-R   | B60x80T/BL-R   | 8                             | 52            |
| 2" x 4"                         | 2.20 (56)            | 4.13 (105)            | B60x100T-R         | B60x100T/W-R  | B60x100T/BL-R  | 4                             | 26            |
| 3" x 1 1/2"                     | 3.15 (80)            | 1.61 (41)             | B80x40T-R          | B80x40T/W-R   | B80x40T/BL-R   | 8                             | 52            |
| 3" x 2"                         | 3.07 (78)            | 2.13 (54)             | B80x60T-R          | B80x60T/W-R   | B80x60T/BL-R   | 8                             | 52            |
| 3" x 3"                         | 3.15 (80)            | 3.15 (80)             | B80x80T-R          | B80x80T/W-R   | B80x80T/BL-R   | 8                             | 52            |
| 3" x 4"                         | 3.15 (80)            | 4.13 (105)            | B80x100T-R         | B80x100T/W-R  | B80x100T/BL-R  | 4                             | 26            |
| 4" x 2"                         | 4.21 (107)           | 2.13 (54)             | B100x60T-R         | B100x60T/W-R  | B100x60T/BL-R  | 4                             | 26            |
| 4" x 3"                         | 4.21 (107)           | 3.15 (80)             | B100x80T-R         | B100x80T/W-R  | B100x80T/BL-R  | 4                             | 26            |
| 4" x 4"                         | 4.21 (107)           | 4.09 (104)            | B100x100T-R        | B100x100T/W-R | B100x100T/BL-R | 4                             | 26            |

#### MATERIAL

self extinguishing PVC

#### SERVICE TEMPERATURE

+5° F to +140° F (-15° C to +60° C)

#### STANDARDS

base slots to DIN 43659

#### STANDARD COLORS

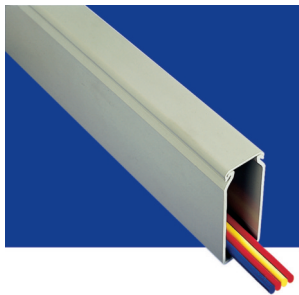
gray, white & black

#### FLAMMABILITY

UL94 V-O rated material



ISO9001:2000 Certified



## Unslotted Wall

### Supplied with lid

| nominal size<br>w x h<br>inches | external dimensions  |                       | part no. selection |                |                 | carton quantity               |               |
|---------------------------------|----------------------|-----------------------|--------------------|----------------|-----------------|-------------------------------|---------------|
|                                 | width<br>inches (mm) | height<br>inches (mm) | gray<br>PVC        | white<br>PVC   | black<br>PVC    | no. of lengths<br>6 1/2' each | total<br>feet |
| 1" x 1 1/2"                     | 1.14 (29)            | 1.61 (41)             | B25x40US-R         | B25x40US/W-R   | B25x40US/BL-R   | 12                            | 78            |
| 1" x 2"                         | 1.14 (29)            | 2.13 (54)             | B25x60US-R         | B25x60US/W-R   | B25x60US/BL-R   | 12                            | 78            |
| 1" x 3"                         | 1.14 (29)            | 3.11 (79)             | B25x80US-R         | B25x80US/W-R   | B25x80US/BL-R   | 8                             | 52            |
| 1" x 4"                         | 1.18 (30)            | 4.13 (105)            | B25x100US-R        | B25x100US/W-R  | B25x100US/BL-R  | 8                             | 52            |
| 1 1/2" x 1 1/2"                 | 1.61 (41)            | 1.61 (41)             | B40x40US-R         | B40x40US/W-R   | B40x40US/BL-R   | 12                            | 78            |
| 1 1/2" x 2"                     | 1.61 (41)            | 2.13 (54)             | B40x60US-R         | B40x60US/W-R   | B40x60US/BL-R   | 8                             | 52            |
| 1 1/2" x 3"                     | 1.54 (39)            | 3.11 (79)             | B40x80US-R         | B40x80US/W-R   | B40x80US/BL-R   | 8                             | 52            |
| 1 1/2" x 4"                     | 1.69 (43)            | 4.13 (105)            | B40x100US-R        | B40x100US/W-R  | B40x100US/BL-R  | 8                             | 52            |
| 2" x 1"                         | 2.13 (54)            | 1.10 (28)             | B60x25US-R         | B60x25US/W-R   | B60x25US/BL-R   | 12                            | 78            |
| 2" x 1 1/2"                     | 2.13 (54)            | 1.61 (41)             | B60x40US-R         | B60x40US/W-R   | B60x40US/BL-R   | 8                             | 52            |
| 2" x 2"                         | 2.13 (54)            | 2.13 (54)             | B60x60US-R         | B60x60US/W-R   | B60x60US/BL-R   | 8                             | 52            |
| 2" x 3"                         | 2.17 (55)            | 3.11 (79)             | B60x80US-R         | B60x80US/W-R   | B60x80US/BL-R   | 8                             | 52            |
| 2" x 4"                         | 2.20 (56)            | 4.13 (105)            | B60x100US-R        | B60x100US/W-R  | B60x100US/BL-R  | 4                             | 26            |
| 3" x 1 1/2"                     | 3.15 (80)            | 1.61 (41)             | B80x40US-R         | B80x40US/W-R   | B80x40US/BL-R   | 8                             | 52            |
| 3" x 2"                         | 3.07 (78)            | 2.13 (54)             | B80x60US-R         | B80x60US/W-R   | B80x60US/BL-R   | 8                             | 52            |
| 3" x 3"                         | 3.15 (80)            | 3.15 (80)             | B80x80US-R         | B80x80US/W-R   | B80x80US/BL-R   | 8                             | 52            |
| 3" x 4"                         | 3.15 (80)            | 4.13 (105)            | B80x100US-R        | B80x100US/W-R  | B80x100US/BL-R  | 4                             | 26            |
| 4" x 2"                         | 4.21 (107)           | 2.13 (54)             | B100x60US-R        | B100x60US/W-R  | B100x60US/BL-R  | 4                             | 26            |
| 4" x 3"                         | 4.21 (107)           | 3.15 (80)             | B100x80US-R        | B100x80US/W-R  | B100x80US/BL-R  | 4                             | 26            |
| 4" x 4"                         | 4.21 (107)           | 4.09 (104)            | B100x100US-R       | B100x100US/W-R | B100x100US/BL-R | 4                             | 26            |
| 4" x 5"                         | 4.21 (107)           | 5.12 (130)            | B100x130US-R       | B100x130US/W-R | B100x130US/BL-R | 4                             | 26            |
| 5" x 3"                         | 5.16 (131)           | 3.07 (78)             | B130x80US-R        | B130x80US/W-R  | B130x80US/BL-R  | 4                             | 26            |

#### MATERIAL

self extinguishing PVC

#### SERVICE TEMPERATURE

+5° F to +140° F (-15° C to +60° C)

#### STANDARDS

base slots to DIN 43659

#### STANDARD COLORS

gray, white & black

#### FLAMMABILITY

UL94 V-O rated material



*A Leading Supplier For Over Twenty Years*

Altech Corp<sup>®</sup> • 908.806.9400 • 908.806.9490 (fax) • [www.altechcorp.com](http://www.altechcorp.com)

## Product Features

The Panel building market has very specific needs. This unique cable management system developed specifically for use within cabinets and control panels. Select Standard, Thin, Closed Slot and Unslotted depending on the application. Available in a number of sizes and colors, manufactured in standard PVC material.

### LID RETENTION

Friction bead on wider trunking provides excellent lid retention to combat vibration

### BREAK-OUT

Fingers can be removed easily without the use of cutting tools

### CABLE RETENTION

Wiring duct design allows cables to be retained during installation, making routing and cable termination a simple process

### EASY INSTALLATION

Base slots are to DIN 43659, providing maximum flexibility for easy installation



### SIZE RANGE

- Wide range of sizes to cater to a broad spectrum of requirements
- New larger sizes with narrower profiles to reduce panel footprint

### MATERIALS

- The standard range is manufactured using self extinguishing PVC

### COLORS

- Gray, white and black are standard
- Blue is offered for intrinsically safe wiring applications
- Other colors available

## Standard Wiring Duct

PVC provides a lightweight self extinguishing wiring duct with excellent rigidity and performance characteristics.

### Standard Slot



- Wide fingers giving additional cable support
- Terminated wires can be re-routed easily
- 0.79" slot pitch
- 0.31" slot width
- 22 sizes, available in gray, white, black or blue

### Unslotted



- Ideal where no break-outs are required or side wall access is infrequent
- Complete cable protection
- 22 sizes, in either gray, white or black

### Thin Slot



- Ideal for use with slimmer terminal blocks where more access is required
- Improves appearance of panels with cables out in best position
- 0.39" slot pitch
- 0.16" slot width
- 19 sizes in a choice of gray, white or black

*Serving the Automation & Control Industry Since 1984*

Altech Corp® • 908.806.9400 • 908.806.9490 (fax) • [www.altechcorp.com](http://www.altechcorp.com)

## Altech Corp.®

Quality  
Endorsed  
Company



ISO 9001:2008  
CERTIFICATE



Altech Search  
Google™ Custom Search

- Home
- Stock Check
- Distributors
- Information
- News
- Contact
- Rep/Dist Login
- Altech Mexico

### WEB TOOLS

- Product Crossings
- Request for Quote
- Sample Request
- Catalog Request

### PRODUCT MENU

- Circuit Protection / Control >
- Connectors >
- Enclosures >
- European Spare Parts >
- Foot Switches
- Interface Modules >
- Power Supplies
- Push Buttons & Pilot Lights >
- Relays >
- Sensors >
- Terminal Blocks >
- Tower Lights
- Wire & Cable Management >
- Home

### New Products and Promotions

## Serving the Automation & Control Industry Since 1984

#### Circuit Protection

|  |   |  |   |  |
|--|---|--|---|--|
|  Circuit Protection Devices |  Busbar and Power Distribution |  Contactors, Overload Relays, Manual Motor Starters |  Motor Disconnect Switches |  European Fuses |
|--|---|--|---|--|

#### Connectors

|   |  |   |
|---|--|---|
|  Industrial Rectangular Connectors |  Pin & Sleeve Devices |  Receptacles |
|---|--|---|

#### Foot Switches

|   |
|---|
|  Foot Switches |
|---|

#### Sensors

|   |
|---|
|  Inductive Proximity Sensors |
|---|

#### Enclosures

|   |  |
|---|--|
|  Industrial Enclosures |  DIN Enclosures |
|---|--|

#### Modules & Relays

|   |   |   |
|---|---|---|
|  Interface Modules |  Safety Relays |  Slimline Relays |
|---|---|---|

#### Power Supplies

|  |
|--|
|  Power Supplies |
|--|

#### Push Buttons

|   |
|---|
|  22 & 30 mm Push Buttons |
|---|

#### DIN Rail

|  |
|--|
|  DIN Rail |
|--|

#### Wire & Cable Management

|  |   |
|--|---|
|  Liquid Tight Strain Reliefs/Corrugated Tubes |  Wire Duct |
|--|---|

#### Terminal Blocks

|  |   |   |  |   |
|--|---|---|--|---|
|  Din Rail Terminal Blocks |  Panel Mount Terminal Blocks |  Printed Circuit Board Terminal Blocks |  Eurostrips |  Distribution Blocks |
|--|---|---|--|---|

#### Miscellaneous

|  |   |   |   |  |
|--|---|---|---|--|
|  Ferrules |  Custom Assembly |  Marking & Engraving Systems |  Power Semi-conductors |  European Spare Parts |
|--|---|---|---|--|

Altech Corporation  
35 Royal Road  
Flemington, NJ 08822-6000  
P 908.806.9400 • F 908.806.9490  
www.altechcorp.com

Altech Corp.® 555B-052013-5M  
Printed July 2013



## Данный компонент на территории Российской Федерации

### Вы можете приобрести в компании MosChip.

Для оперативного оформления запроса Вам необходимо перейти по данной ссылке:

<http://moschip.ru/get-element>

Вы можете разместить у нас заказ для любого Вашего проекта, будь то серийное производство или разработка единичного прибора.

В нашем ассортименте представлены ведущие мировые производители активных и пассивных электронных компонентов.

Нашей специализацией является поставка электронной компонентной базы двойного назначения, продукции таких производителей как XILINX, Intel (ex.ALTERA), Vicor, Microchip, Texas Instruments, Analog Devices, Mini-Circuits, Amphenol, Glenair.

Сотрудничество с глобальными дистрибьюторами электронных компонентов, предоставляет возможность заказывать и получать с международных складов практически любой перечень компонентов в оптимальные для Вас сроки.

На всех этапах разработки и производства наши партнеры могут получить квалифицированную поддержку опытных инженеров.

Система менеджмента качества компании отвечает требованиям в соответствии с ГОСТ Р ИСО 9001, ГОСТ РВ 0015-002 и ЭС РД 009

### Офис по работе с юридическими лицами:

105318, г.Москва, ул.Щербаковская д.3, офис 1107, 1118, ДЦ «Щербаковский»

Телефон: +7 495 668-12-70 (многоканальный)

Факс: +7 495 668-12-70 (доб.304)

E-mail: [info@moschip.ru](mailto:info@moschip.ru)

Skype отдела продаж:

moschip.ru

moschip.ru\_4

moschip.ru\_6

moschip.ru\_9