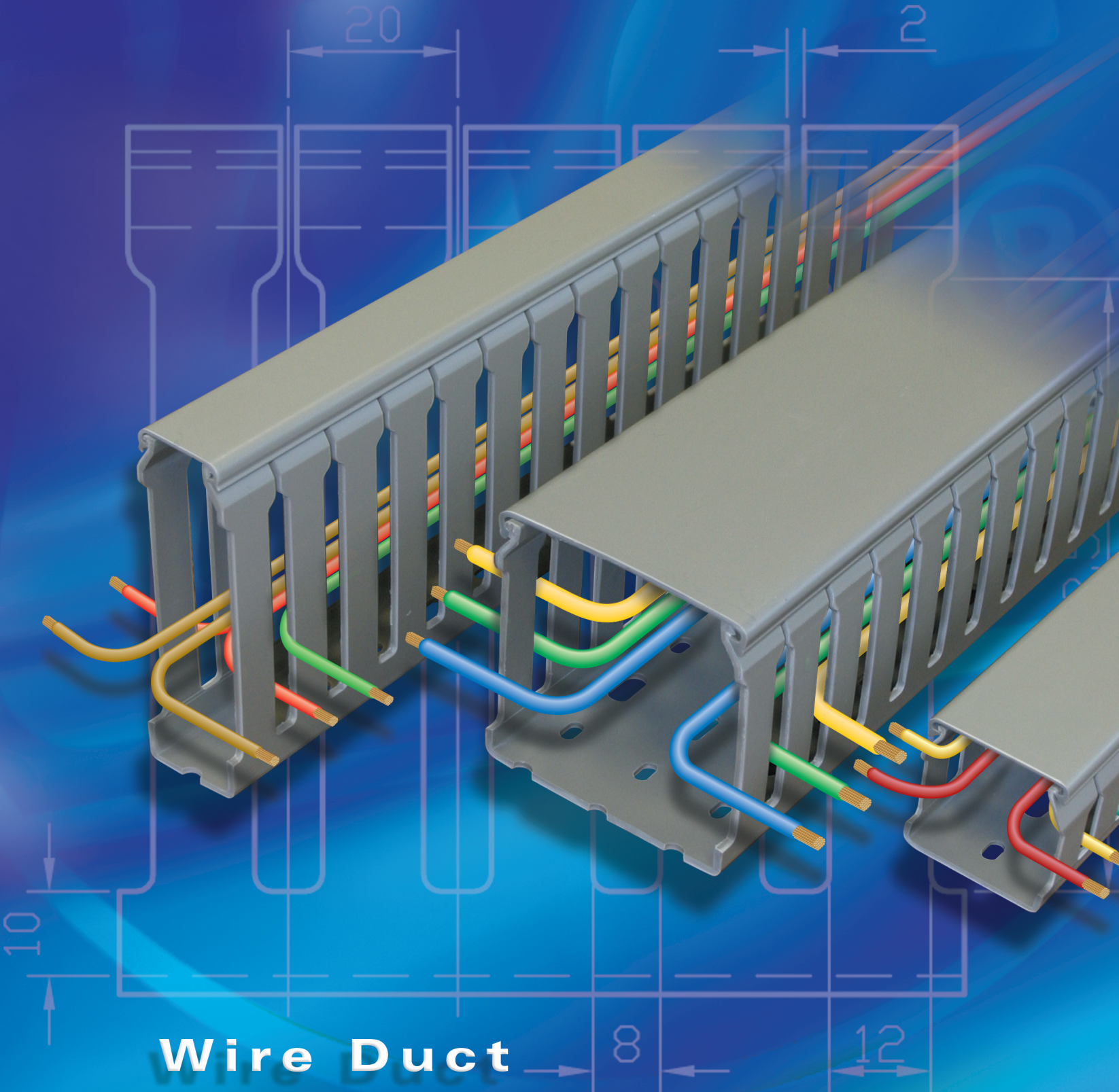


Altech Corp.®

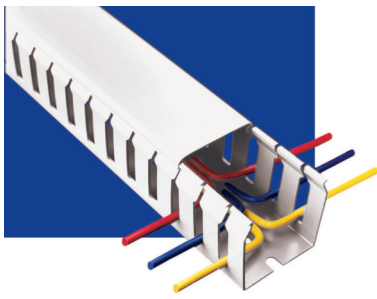
Serving the Automation & Control Industry since 1984



Quality
Endorsed
Company



Wire Duct



Standard Slot

Supplied with lid

nominal size w x h inches	external dimensions		part no. selection				standard pack	
	width inches (mm)	height inches (mm)	gray PVC	white PVC	black PVC	blue PVC	no. of lengths 6 1/2' each	total feet
1" x 1 1/2"	1.14 (29)	1.61 (41)	B25x40S-R	B25x40S/W-R	B25x40S/BL-R	–	12	78
1" x 2"	1.14 (29)	2.13 (54)	B25x60S-R	B25x60S/W-R	B25x60S/BL-R	B25x60S/BU-R	12	78
1" x 3"	1.14 (29)	3.11 (79)	B25x80S-R	B25x80S/W-R	B25x80S/BL-R	B25x80S/BU-R	8	52
1" x 4"	1.18 (30)	4.13 (105)	B25x100S-R	B25x100S/W-R	B25x100S/BL-R	B25x100S/BU-R	8	52
1 1/2" x 1 1/2"	1.61 (41)	1.61 (41)	B40x40S-R	B40x40S/W-R	B40x40S/BL-R	–	12	78
1 1/2" x 2"	1.61 (41)	2.13 (54)	B40x60S-R	B40x60S/W-R	B40x60S/BL-R	B40x60S/BU-R	8	52
1 1/2" x 3"	1.54 (39)	3.11 (79)	B40x80S-R	B40x80S/W-R	B40x80S/BL-R	B40x80S/BU-R	8	52
1 1/2" x 4"	1.69 (43)	4.13 (105)	B40x100S-R	B40x100S/W-R	B40x100S/BL-R	B40x100S/BU-R	8	52
2" x 1"	2.13 (54)	1.10 (28)	B60x25S-R	B60x25S/W-R	B60x25S/BL-R	–	12	78
2" x 1 1/2"	2.13 (54)	1.61 (41)	B60x40S-R	B60x40S/W-R	B60x40S/BL-R	–	8	52
2" x 2"	2.13 (54)	2.13 (54)	B60x60S-R	B60x60S/W-R	B60x60S/BL-R	B60x60S/BU-R	8	52
2" x 3"	2.17 (55)	3.11 (79)	B60x80S-R	B60x80S/W-R	B60x80S/BL-R	B60x80S/BU-R	8	52
2" x 4"	2.20 (56)	4.13 (105)	B60x100S-R	B60x100S/W-R	B60x100S/BL-R	–	4	26
3" x 1 1/2"	3.15 (80)	1.61 (41)	B80x40S-R	B80x40S/W-R	B80x40S/BL-R	–	8	52
3" x 2"	3.07 (78)	2.13 (54)	B80x60S-R	B80x60S/W-R	B80x60S/BL-R	–	8	52
3" x 3"	3.15 (80)	3.15 (80)	B80x80S-R	B80x80S/W-R	B80x80S/BL-R	B80x80S/BU-R	8	52
3" x 4"	3.15 (80)	4.13 (105)	B80x100S-R	B80x100S/W-R	B80x100S/BL-R	B80x100S/BU-R	4	26
4" x 2"	4.21 (107)	2.13 (54)	B100x60S-R	B100x60S/W-R	B100x60S/BL-R	–	4	26
4" x 3"	4.21 (107)	3.15 (80)	B100x80S-R	B100x80S/W-R	B100x80S/BL-R	B100x80S/BU-R	4	26
4" x 4"	4.21 (107)	4.09 (104)	B100x100S-R	B100x100S/W-R	B100x100S/BL-R	B100x100S/BU-R	4	26
4" x 5"	4.21 (107)	5.12 (130)	B100x130S-R	B100x130S/W-R	B100x130S/BL-R	–	4	26
5" x 3"	5.16 (131)	3.07 (78)	B130x80S-R	B130x80S/W-R	B130x80S/BL-R	–	4	26

MATERIAL

self extinguishing PVC

SERVICE TEMPERATURE

+5° F to +140° F (-15° C to +60° C)

STANDARDS

base slots to DIN 43659

STANDARD COLORS

gray, white, black & blue

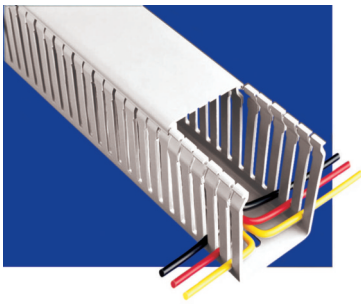
FLAMMABILITY

UL94 V-O rated material



Serving the Automation & Control Industry Since 1984

Altech Corp® • 908.806.9400 • 908.806.9490 (fax) • www.altechcorp.com



Thin Slot

Supplied with lid

nominal size w x h inches	external dimensions		part no. selection			carton quantity	
	width inches (mm)	height inches (mm)	gray PVC	white PVC	black PVC	no. of lengths 6 1/2' each	total feet
1" x 1 1/2"	1.14 (29)	1.61(41)	B25x40T-R	B25x40T/W-R	B25x40T/BL-R	12	78
1" x 2"	1.14 (29)	2.13 (54)	B25x60T-R	B25x60T/W-R	B25x60T/BL-R	12	78
1" x 3"	1.14 (29)	3.11 (79)	B25x80T-R	B25x80T/W-R	B25x80T/BL-R	8	52
1" x 4"	1.18 (30)	4.13 (105)	B25x100T-R	B25x100T/W-R	B25x100T/BL-R	8	52
1 1/2" x 1 1/2"	1.61 (41)	1.61 (41)	B40x40T-R	B40x40T/W-R	B40x40T/BL-R	12	78
1 1/2" x 2"	1.61 (41)	2.13 (54)	B40x60T-R	B40x60T/W-R	B40x60T/BL-R	8	52
1 1/2" x 3"	1.61 (41)	3.11 (79)	B40x80T-R	B40x80T/W-R	B40x80T/BL-R	8	52
1 1/2" x 4"	1.69 (43)	4.13 (105)	B40x100T-R	B40x100T/W-R	B40x100T/BL-R	8	52
2" x 1 1/2"	2.20 (56)	1.61 (41)	B60x40T-R	B60x40T/W-R	B60x40T/BL-R	8	52
2" x 2"	2.13 (54)	2.13 (54)	B60x60T-R	B60x60T/W-R	B60x60T/BL-R	8	52
2" x 3"	2.17 (55)	3.11 (79)	B60x80T-R	B60x80T/W-R	B60x80T/BL-R	8	52
2" x 4"	2.20 (56)	4.13 (105)	B60x100T-R	B60x100T/W-R	B60x100T/BL-R	4	26
3" x 1 1/2"	3.15 (80)	1.61 (41)	B80x40T-R	B80x40T/W-R	B80x40T/BL-R	8	52
3" x 2"	3.07 (78)	2.13 (54)	B80x60T-R	B80x60T/W-R	B80x60T/BL-R	8	52
3" x 3"	3.15 (80)	3.15 (80)	B80x80T-R	B80x80T/W-R	B80x80T/BL-R	8	52
3" x 4"	3.15 (80)	4.13 (105)	B80x100T-R	B80x100T/W-R	B80x100T/BL-R	4	26
4" x 2"	4.21 (107)	2.13 (54)	B100x60T-R	B100x60T/W-R	B100x60T/BL-R	4	26
4" x 3"	4.21 (107)	3.15 (80)	B100x80T-R	B100x80T/W-R	B100x80T/BL-R	4	26
4" x 4"	4.21 (107)	4.09 (104)	B100x100T-R	B100x100T/W-R	B100x100T/BL-R	4	26

MATERIAL

self extinguishing PVC

SERVICE TEMPERATURE

+5° F to +140° F (-15° C to +60° C)

STANDARDS

base slots to DIN 43659

STANDARD COLORS

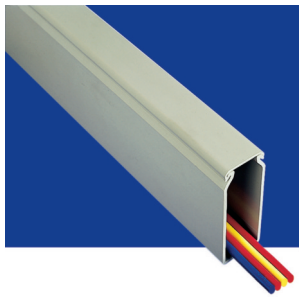
gray, white & black

FLAMMABILITY

UL94 V-O rated material



ISO9001:2000 Certified



Unslotted Wall

Supplied with lid

nominal size w x h inches	external dimensions		part no. selection			carton quantity	
	width inches (mm)	height inches (mm)	gray PVC	white PVC	black PVC	no. of lengths 6 1/2' each	total feet
1" x 1 1/2"	1.14 (29)	1.61 (41)	B25x40US-R	B25x40US/W-R	B25x40US/BL-R	12	78
1" x 2"	1.14 (29)	2.13 (54)	B25x60US-R	B25x60US/W-R	B25x60US/BL-R	12	78
1" x 3"	1.14 (29)	3.11 (79)	B25x80US-R	B25x80US/W-R	B25x80US/BL-R	8	52
1" x 4"	1.18 (30)	4.13 (105)	B25x100US-R	B25x100US/W-R	B25x100US/BL-R	8	52
1 1/2" x 1 1/2"	1.61 (41)	1.61 (41)	B40x40US-R	B40x40US/W-R	B40x40US/BL-R	12	78
1 1/2" x 2"	1.61 (41)	2.13 (54)	B40x60US-R	B40x60US/W-R	B40x60US/BL-R	8	52
1 1/2" x 3"	1.54 (39)	3.11 (79)	B40x80US-R	B40x80US/W-R	B40x80US/BL-R	8	52
1 1/2" x 4"	1.69 (43)	4.13 (105)	B40x100US-R	B40x100US/W-R	B40x100US/BL-R	8	52
2" x 1"	2.13 (54)	1.10 (28)	B60x25US-R	B60x25US/W-R	B60x25US/BL-R	12	78
2" x 1 1/2"	2.13 (54)	1.61 (41)	B60x40US-R	B60x40US/W-R	B60x40US/BL-R	8	52
2" x 2"	2.13 (54)	2.13 (54)	B60x60US-R	B60x60US/W-R	B60x60US/BL-R	8	52
2" x 3"	2.17 (55)	3.11 (79)	B60x80US-R	B60x80US/W-R	B60x80US/BL-R	8	52
2" x 4"	2.20 (56)	4.13 (105)	B60x100US-R	B60x100US/W-R	B60x100US/BL-R	4	26
3" x 1 1/2"	3.15 (80)	1.61 (41)	B80x40US-R	B80x40US/W-R	B80x40US/BL-R	8	52
3" x 2"	3.07 (78)	2.13 (54)	B80x60US-R	B80x60US/W-R	B80x60US/BL-R	8	52
3" x 3"	3.15 (80)	3.15 (80)	B80x80US-R	B80x80US/W-R	B80x80US/BL-R	8	52
3" x 4"	3.15 (80)	4.13 (105)	B80x100US-R	B80x100US/W-R	B80x100US/BL-R	4	26
4" x 2"	4.21 (107)	2.13 (54)	B100x60US-R	B100x60US/W-R	B100x60US/BL-R	4	26
4" x 3"	4.21 (107)	3.15 (80)	B100x80US-R	B100x80US/W-R	B100x80US/BL-R	4	26
4" x 4"	4.21 (107)	4.09 (104)	B100x100US-R	B100x100US/W-R	B100x100US/BL-R	4	26
4" x 5"	4.21 (107)	5.12 (130)	B100x130US-R	B100x130US/W-R	B100x130US/BL-R	4	26
5" x 3"	5.16 (131)	3.07 (78)	B130x80US-R	B130x80US/W-R	B130x80US/BL-R	4	26

MATERIAL

self extinguishing PVC

SERVICE TEMPERATURE

+5° F to +140° F (-15° C to +60° C)

STANDARDS

base slots to DIN 43659

STANDARD COLORS

gray, white & black

FLAMMABILITY

UL94 V-O rated material



A Leading Supplier For Over Twenty Years

Altech Corp[®] • 908.806.9400 • 908.806.9490 (fax) • www.altechcorp.com

Product Features

The Panel building market has very specific needs. This unique cable management system developed specifically for use within cabinets and control panels. Select Standard, Thin, Closed Slot and Unslotted depending on the application. Available in a number of sizes and colors, manufactured in standard PVC material.

LID RETENTION

Friction bead on wider trunking provides excellent lid retention to combat vibration

BREAK-OUT

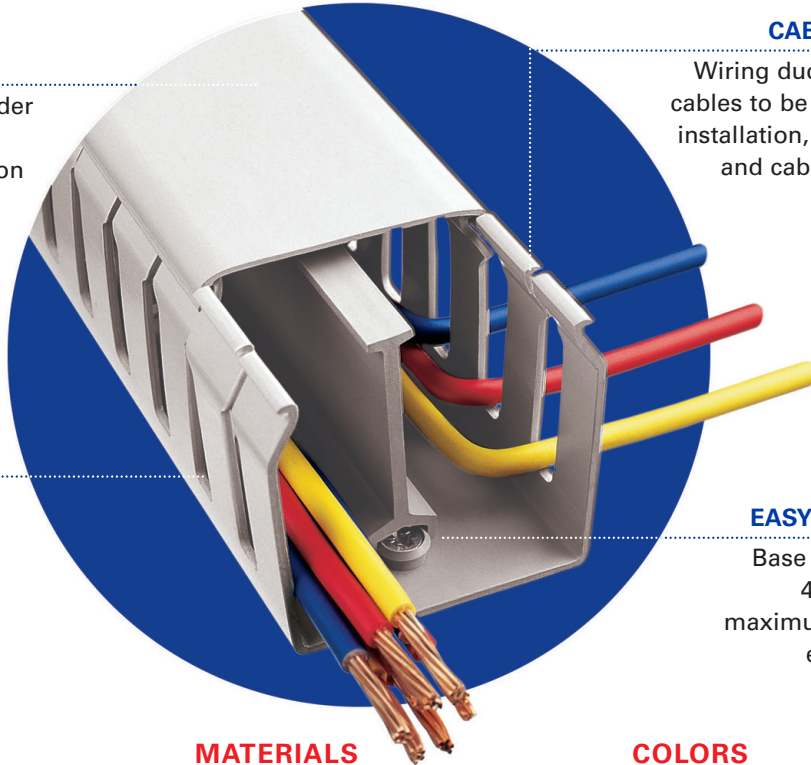
Fingers can be removed easily without the use of cutting tools

CABLE RETENTION

Wiring duct design allows cables to be retained during installation, making routing and cable termination a simple process

EASY INSTALLATION

Base slots are to DIN 43659, providing maximum flexibility for easy installation



SIZE RANGE

- Wide range of sizes to cater to a broad spectrum of requirements
- New larger sizes with narrower profiles to reduce panel footprint

MATERIALS

- The standard range is manufactured using self extinguishing PVC

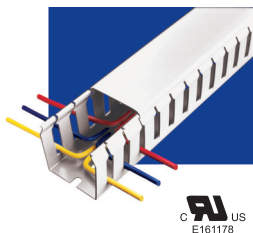
COLORS

- Gray, white and black are standard
- Blue is offered for intrinsically safe wiring applications
- Other colors available

Standard Wiring Duct

PVC provides a lightweight self extinguishing wiring duct with excellent rigidity and performance characteristics.

Standard Slot



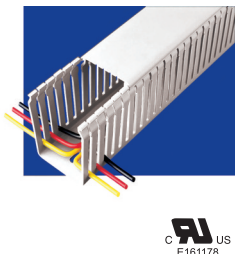
- Wide fingers giving additional cable support
- Terminated wires can be re-routed easily
- 0.79" slot pitch
- 0.31" slot width
- 22 sizes, available in gray, white, black or blue

Unslotted



- Ideal where no break-outs are required or side wall access is infrequent
- Complete cable protection
- 22 sizes, in either gray, white or black

Thin Slot



- Ideal for use with slimmer terminal blocks where more access is required
- Improves appearance of panels with cables out in best position
- 0.39" slot pitch
- 0.16" slot width
- 19 sizes in a choice of gray, white or black

Serving the Automation & Control Industry Since 1984

Altech Corp® • 908.806.9400 • 908.806.9490 (fax) • www.altechcorp.com

Altech Corp.®

Quality
Endorsed
Company



ISO 9001:2008
CERTIFICATE



Altech Search
Google™ Custom Search

- Home
- Stock Check
- Distributors
- Information
- News
- Contact
- Rep/Dist Login
- Altech Mexico

- WEB TOOLS
 - Product Crossings
 - Request for Quote
 - Sample Request
 - Catalog Request
- PRODUCT MENU
 - Circuit Protection / Control >
 - Connectors >
 - Enclosures >
 - European Spare Parts >
 - Foot Switches
 - Interface Modules >
 - Power Supplies
 - Push Buttons & Pilot Lights >
 - Relays >
 - Sensors >
 - Terminal Blocks >
 - Tower Lights
 - Wire & Cable Management >
 - Home

New Products and Promotions

Serving the Automation & Control Industry Since 1984

Circuit Protection

 <p>Circuit Protection Devices</p>	 <p>Busbar and Power Distribution</p>	 <p>Contactors, Overload Relays, Manual Motor Starters</p>	 <p>Motor Disconnect Switches</p>	 <p>European Fuses</p>
---	--	---	--	---

Connectors

 <p>Industrial Rectangular Connectors</p>	 <p>Pin & Sleeve Devices</p>	 <p>Receptacles</p>	 <p>Foot Switches</p>	 <p>Inductive Proximity Sensors</p>
--	---	--	--	--

Enclosures

 <p>Industrial Enclosures</p>	 <p>DIN Enclosures</p>	 <p>Interface Modules</p>	 <p>Safety Relays</p>	 <p>Slimline Relays</p>
--	---	--	--	--

Power Supplies

 <p>Power Supplies</p>	 <p>22 & 30 mm Push Buttons</p>	 <p>DIN Rail</p>	 <p>Liquid Tight Strain Reliefs/Corrugated Tubes</p>	 <p>Wire Duct</p>
---	--	---	---	--

Terminal Blocks

 <p>Din Rail Terminal Blocks</p>	 <p>Panel Mount Terminal Blocks</p>	 <p>Printed Circuit Board Terminal Blocks</p>	 <p>Eurostrips</p>	 <p>Distribution Blocks</p>
---	--	--	---	--

Miscellaneous

 <p>Ferrules</p>	 <p>Custom Assembly</p>	 <p>Marking & Engraving Systems</p>	 <p>Power Semi-conductors</p>	 <p>European Spare Parts</p>
---	--	--	--	---

Altech Corporation
35 Royal Road
Flemington, NJ 08822-6000
P 908.806.9400 • F 908.806.9490
www.altechcorp.com

Altech Corp.® 555B-052013-5M
Printed July 2013



Данный компонент на территории Российской Федерации

Вы можете приобрести в компании MosChip.

Для оперативного оформления запроса Вам необходимо перейти по данной ссылке:

<http://moschip.ru/get-element>

Вы можете разместить у нас заказ для любого Вашего проекта, будь то серийное производство или разработка единичного прибора.

В нашем ассортименте представлены ведущие мировые производители активных и пассивных электронных компонентов.

Нашей специализацией является поставка электронной компонентной базы двойного назначения, продукции таких производителей как XILINX, Intel (ex.ALTERA), Vicor, Microchip, Texas Instruments, Analog Devices, Mini-Circuits, Amphenol, Glenair.

Сотрудничество с глобальными дистрибьюторами электронных компонентов, предоставляет возможность заказывать и получать с международных складов практически любой перечень компонентов в оптимальные для Вас сроки.

На всех этапах разработки и производства наши партнеры могут получить квалифицированную поддержку опытных инженеров.

Система менеджмента качества компании отвечает требованиям в соответствии с ГОСТ Р ИСО 9001, ГОСТ РВ 0015-002 и ЭС РД 009

Офис по работе с юридическими лицами:

105318, г.Москва, ул.Щербаковская д.3, офис 1107, 1118, ДЦ «Щербаковский»

Телефон: +7 495 668-12-70 (многоканальный)

Факс: +7 495 668-12-70 (доб.304)

E-mail: info@moschip.ru

Skype отдела продаж:

moschip.ru

moschip.ru_4

moschip.ru_6

moschip.ru_9