

Wirewound Resistors, Industrial Power, Silicone Coated, Adjustable Edgewound Tubular


FEATURES

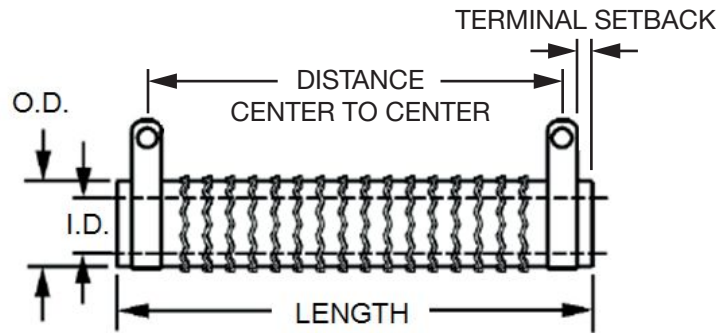
- High temperature silicone coating
- Complete welded construction
- Tight tolerance of 5 % for values above 1 Ω
- Excellent stability in operation (< 3 % change in resistance)
- Material categorization:
for definitions of compliance please see www.vishay.com/doc?99912



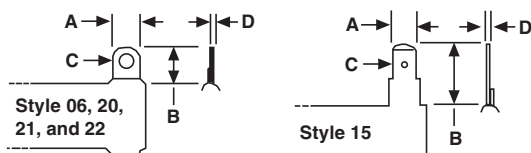
RoHS
COMPLIANT
HALOGEN
FREE
GREEN
(5-2008)

STANDARD ELECTRICAL SPECIFICATIONS					
GLOBAL MODEL	HISTORICAL MODEL	POWER RATING $P_{25^\circ\text{C}}$ W	RESISTANCE RANGE Ω $\pm 5\%$	RESISTANCE RANGE Ω $\pm 10\%$	WEIGHT (typical) g
ASE0050	ASE-50	50	1.0 to 3.8	1.0 to 3.8	18
ASE0090	ASE-90	90	0.10 to 5.7	0.10 to 5.7	36
ASE0100	ASE-100	100	1.0 to 6.1	0.15 to 6.1	41
ASE0110	ASE-110	110	1.0 to 7.4	0.20 to 7.4	49
ASE0120	ASE-120	120	1.0 to 8.6	0.1 to 8.6	54
ASE0155	ASE-155	155	1.0 to 12.5	0.1 to 12.5	129
ASE0240	ASE-240	240	1.0 to 18	0.1 to 18	186
ASE0300	ASE-300	300	1.0 to 25	0.15 to 25	236
ASE0375	ASE-375	375	1.0 to 32	0.20 to 32	286
ASE0420	ASE-420	420	1.0 to 35.8	0.25 to 35.8	320
ASE0500	ASE-500	500	0.30 to 46.2	0.30 to 46.2	381
ASE0750	ASE-750	750	0.35 to 81.3	0.35 to 81.3	654
ASE1000	ASE-1000	1000	0.40 to 101.6	0.40 to 101.6	817
ASE1500	ASE-1500	1500	0.45 to 135.5	0.45 to 135.5	1090

GLOBAL PART NUMBER INFORMATION																	
Global Part Numbering example: ASE030020E15R0JE92 (visit www.vishay.net SAP parts manual for all options)																	
A	S	E	0	3	0	0	2	0	E	1	5	R	0	J	E	9	2
GLOBAL MODEL (7 digits)	TERMINAL DESIGNATION (2 digits)	TERMINAL FINISH (1 digit)	VALUE (4 digits)	TOLERANCE (1 digit)	PACKAGING CODE (1 digit)	SPECIAL (up to 2 digits)											
(See Standard Electrical Specifications Global Model column for options)	06 15 20 21 22	E = Lead (Pb)-free	R = Decimal 1R50 = 1.5 Ω	J = $\pm 5\%$ K = $\pm 10\%$	E = Lead (Pb)-free cell and bulk pack	(Dash number) From 1 to 99 as applicable 91 = 100 style horizontal thru-bolt bracket 92 = 200 style push-in bracket 93 = 300 style vertical thru-bolt bracket											
Historical Part Number example: ASE-300-15-10%-BKTS																	
ASE-300	15 Ω	10 %	BKTS														
HISTORICAL MODEL	RESISTANCE VALUE	TOLERANCE	SPECIAL														

DIMENSIONS in inches [millimeters]


MODEL	CORE DIMENSIONS			TERMINAL SETBACK	DISTANCE CENTER TO CENTER (REF.)	TERMINAL DESIGNATION		SLIDER MODEL NUMBER
	LENGTH ± 0.062 [± 1.57]	O.D. ± 0.031 [± 0.79]	I.D. ± 0.031 [± 0.79]			STANDARD	OPTIONAL (QUICK CONNECT)	
ASE0050	2.000 [50.8]	0.750 [19.05]	0.500 [12.70]	0.094 [2.38]	1.562 [39.67]	06	15	71
ASE0090	4.000 [101.6]	0.563 [14.30]	0.313 [7.95]	0.094 [2.38]	3.562 [90.47]	06	15	71
ASE0100	3.500 [88.90]	0.750 [19.05]	0.500 [12.70]	0.079 [2.39]	3.092 [78.54]	06	15	74
ASE0110	4.000 [101.6]	0.750 [19.05]	0.500 [12.70]	0.125 [3.18]	3.500 [88.90]	06	15	74
ASE0120	4.500 [114.3]	0.750 [19.05]	0.547 [13.89]	0.125 [3.18]	4.000 [101.60]	06	15	74
ASE0155	4.250 [107.95]	1.125 [28.58]	0.750 [19.05]	0.282 [7.16]	3.311 [84.10]	20	15	74
ASE0240	6.500 [165.1]	1.125 [28.58]	0.750 [19.05]	0.282 [7.16]	5.561 [141.25]	20	15	75
ASE0300	8.500 [215.9]	1.125 [28.58]	0.750 [19.05]	0.267 [6.78]	7.591 [192.81]	20	15	75
ASE0375	10.500 [266.7]	1.125 [28.58]	0.750 [19.05]	0.266 [6.76]	9.591 [243.61]	20	15	75
ASE0420	11.750 [298.45]	1.125 [28.58]	0.750 [19.05]	0.266 [6.76]	10.843 [275.41]	20	15	76
ASE0500	10.500 [266.7]	1.625 [41.28]	1.125 [28.58]	0.266 [6.76]	9.468 [240.49]	21	-	78
ASE0750	12.000 [304.8]	2.500 [63.5]	1.750 [44.45]	0.508 [12.90]	10.484 [266.29]	21	-	77
ASE1000	15.000 [381.0]	2.500 [63.50]	1.750 [44.45]	0.508 [12.90]	13.484 [342.49]	22	-	78
ASE1500	20.000 [508.0]	2.500 [63.50]	1.750 [44.45]	0.508 [12.90]	18.484 [469.49]	22	-	78

TERMINAL DIMENSIONS in inches [millimeters]


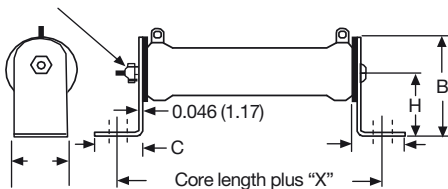
DIMENSIONS	TERMINAL STYLE				
	06	15	20	21	22
A	0.250 [6.35]	0.250 [6.35]	0.375 [9.53]	0.500 [12.70]	0.500 [12.70]
B	0.500 [12.70]	0.594 [15.08]	0.5625 [14.28]	0.625 [15.87]	0.925 [23.49]
C (HOLE DIAMETER)	0.173 [4.39]	0.065 [1.65]	0.204 [5.18]	0.264 [6.70]	0.264 [6.70]
D	0.020 [0.51]	0.031 [0.79]	0.032 [0.812]	0.025 [0.64]	0.025 [0.64]

ASE SLIDERS-DIMENSIONS in inches [millimeters]						
	GLOBAL PART NUMBER (1) (RoHS COMPLIANT)	GLOBAL MODEL (OF RESISTOR)	SLIDER MODEL NUMBER	DIMENSIONS		
				WIDTH	HEIGHT	HOLE DIAMETER
	75008603E29	ASE0050, ASE0090	71	0.250 [6.35]	0.719 [18.26]	0.141 [3.58]
	75025201E29	ASE0100, ASE0110, ASE0120, ASE0155	74	0.312 [7.92]	0.891 [22.63]	0.196 [4.98]
	75025203E29	ASE0240, ASE0300, ASE0375	75	0.500 [12.70]	0.891 [22.63]	0.265 [6.73]
	75025204E29	ASE0500, ASE1000, ASE1500, ASE2000	78	0.500 [12.70]	0.891 [22.63]	0.265 [6.73]
	75025206E29	ASE0420	76	0.312 [7.92]	0.891 [22.63]	0.196 [4.98]
	75025207E29	ASE0750	77	0.500 [12.70]	0.891 [22.63]	0.265 [6.73]

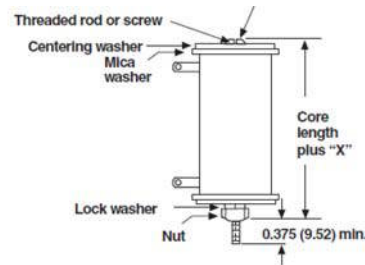
Note

(1) Order HEI slider with global part number.

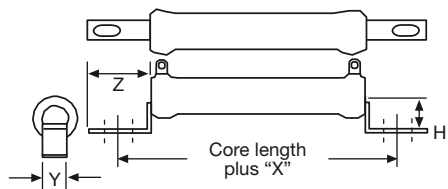
MOUNTING HARDWARE FOR AVT PRODUCTS - Dimensions in inches [millimeters]

91 = 100 Style Horizontal 1 High Bracket


BRACKET TYPE	X	Y	Z	H	MOUNTING SLOT	C	B
102	1.063 [26.99]	0.750 [19.05]	0.859 [21.83]	1.250 [31.75]	0.219 x 0.438 [5.56 x 11.11]	0.750 [19.05]	1.750 [44.75]
103	1.063 [26.99]	1.250 [31.75]	1.000 [25.40]	1.500 [38.10]	0.281 x 0.563 [7.14 x 14.29]	0.927 [23.55]	2.125 [53.98]
104	1.952 [49.58]	2.500 [63.50]	1.478 [37.54]	3.000 [76.20]	open slot x 0.406 [10.31]	1.375 [34.93]	4.25 [107.25]

93 = 300 Style Thru-Bolt Bracket


BRACKET TYPE	X (APPROXIMATE)	THREAD
302	0.271 [6.88]	10-32
303	0.463 [11.76]	1/4-20

92 = 200 Style Push-In Bracket


BRACKET TYPE	X	H	Y	Z	HOLE (DIA.)
204	0.700 [17.78]	0.578 [14.68]	0.250 [6.35]	0.500 [12.70]	0.156 [3.96]
206	0.846 [21.49]	0.800 [20.62]	0.375 [9.53]	0.600 [15.24]	0.343 x 0.213 [8.71 x 5.46]
207	0.700 [17.78]	1.125 [28.58]	0.500 [12.70]	0.687 [17.45]	0.250 x 0.188 [6.35 x 4.78]

MOUNTING HARDWARE

GLOBAL MODEL	AVAILABLE BRACKET TYPES BY MODEL		
	91 = 100 STYLE HORIZONTAL 1 HIGH BRACKET	92 = 200 STYLE PUSH-IN BRACKET	93 = 300 STYLE THRU-BOLT BRACKET
ASE0050	102	206	302
ASE0090	102	204	302
ASE0100	102	206	302
ASE0110	102	206	302
ASE0120	102	206	302
ASE0155	103	207	302
ASE0240	103	207	302
ASE0300	103	207	303
ASE0375	103	207	303
ASE0420	103	207	303
ASE0500	103	-	302
ASE0750	104	-	302
ASE1000	104	-	302
ASE1500	104	-	303



TECHNICAL SPECIFICATIONS		
PARAMETER	UNIT	RESISTOR CHARACTERISTICS
Power Rating	W	50 to 1500
Resistance Range	Ω	0.10 to 135.5
Resistance Tolerance	%	10
Temperature Coefficient	ppm/ $^{\circ}$ C	± 260 for 20 Ω and above, ± 400 for 1 Ω to 19.99 Ω
Operating Temperature	$^{\circ}$ C	-55 $^{\circ}$ C to 350 $^{\circ}$ C
Temperature Rise	$^{\circ}$ C	325 $^{\circ}$ C above an ambient of 25 $^{\circ}$ C
Maximum Altitude	f.a.s.l.	10 000
Short-Term Overload	-	10x rated power for 5 s
Surge Windings	-	Available
Maximum Working Voltage	-	$(P \times R)^{0.5}$
Insulation Resistance	Ω	1M
Dielectric Voltage	V _{RMS}	1000 V _{AC}
Creepage	-	Varies by wattage, see "Terminal Setback" in Dimensions table
Terminal Sleeves	-	n/a
Inductance	μ H	Varies by wattage and resistance
Non-Inductive Winding	-	n/a
Terminal Strength	lb	10 lbs
Electrical or Mechanical Customization	-	Contact factory: ww2dresistors@vishay.com

MATERIAL SPECIFICATIONS	
Element	Copper-nickel alloy or nickel-chrome alloy, depending on resistance value
Core	Cordierite, steatite
Coating	Special high temperature silicone
Standard Terminals	Tinned alloy 42
Optional Terminals	Alloy 42
Terminal Bands	Alloy 42
Part Marking	HEI, model, wattage, value, tolerance, date code





Disclaimer

ALL PRODUCT, PRODUCT SPECIFICATIONS AND DATA ARE SUBJECT TO CHANGE WITHOUT NOTICE TO IMPROVE RELIABILITY, FUNCTION OR DESIGN OR OTHERWISE.

Vishay Intertechnology, Inc., its affiliates, agents, and employees, and all persons acting on its or their behalf (collectively, "Vishay"), disclaim any and all liability for any errors, inaccuracies or incompleteness contained in any datasheet or in any other disclosure relating to any product.

Vishay makes no warranty, representation or guarantee regarding the suitability of the products for any particular purpose or the continuing production of any product. To the maximum extent permitted by applicable law, Vishay disclaims (i) any and all liability arising out of the application or use of any product, (ii) any and all liability, including without limitation special, consequential or incidental damages, and (iii) any and all implied warranties, including warranties of fitness for particular purpose, non-infringement and merchantability.

Statements regarding the suitability of products for certain types of applications are based on Vishay's knowledge of typical requirements that are often placed on Vishay products in generic applications. Such statements are not binding statements about the suitability of products for a particular application. It is the customer's responsibility to validate that a particular product with the properties described in the product specification is suitable for use in a particular application. Parameters provided in datasheets and/or specifications may vary in different applications and performance may vary over time. All operating parameters, including typical parameters, must be validated for each customer application by the customer's technical experts. Product specifications do not expand or otherwise modify Vishay's terms and conditions of purchase, including but not limited to the warranty expressed therein.

Except as expressly indicated in writing, Vishay products are not designed for use in medical, life-saving, or life-sustaining applications or for any other application in which the failure of the Vishay product could result in personal injury or death. Customers using or selling Vishay products not expressly indicated for use in such applications do so at their own risk. Please contact authorized Vishay personnel to obtain written terms and conditions regarding products designed for such applications.

No license, express or implied, by estoppel or otherwise, to any intellectual property rights is granted by this document or by any conduct of Vishay. Product names and markings noted herein may be trademarks of their respective owners.

Material Category Policy

Vishay Intertechnology, Inc. hereby certifies that all its products that are identified as RoHS-Compliant fulfill the definitions and restrictions defined under Directive 2011/65/EU of The European Parliament and of the Council of June 8, 2011 on the restriction of the use of certain hazardous substances in electrical and electronic equipment (EEE) - recast, unless otherwise specified as non-compliant.

Please note that some Vishay documentation may still make reference to RoHS Directive 2002/95/EC. We confirm that all the products identified as being compliant to Directive 2002/95/EC conform to Directive 2011/65/EU.

Vishay Intertechnology, Inc. hereby certifies that all its products that are identified as Halogen-Free follow Halogen-Free requirements as per JEDEC JS709A standards. Please note that some Vishay documentation may still make reference to the IEC 61249-2-21 definition. We confirm that all the products identified as being compliant to IEC 61249-2-21 conform to JEDEC JS709A standards.

Данный компонент на территории Российской Федерации

Вы можете приобрести в компании MosChip.

Для оперативного оформления запроса Вам необходимо перейти по данной ссылке:

<http://moschip.ru/get-element>

Вы можете разместить у нас заказ для любого Вашего проекта, будь то серийное производство или разработка единичного прибора.

В нашем ассортименте представлены ведущие мировые производители активных и пассивных электронных компонентов.

Нашей специализацией является поставка электронной компонентной базы двойного назначения, продукции таких производителей как XILINX, Intel (ex.ALTERA), Vicor, Microchip, Texas Instruments, Analog Devices, Mini-Circuits, Amphenol, Glenair.

Сотрудничество с глобальными дистрибьюторами электронных компонентов, предоставляет возможность заказывать и получать с международных складов практически любой перечень компонентов в оптимальные для Вас сроки.

На всех этапах разработки и производства наши партнеры могут получить квалифицированную поддержку опытных инженеров.

Система менеджмента качества компании отвечает требованиям в соответствии с ГОСТ Р ИСО 9001, ГОСТ РВ 0015-002 и ЭС РД 009

Офис по работе с юридическими лицами:

105318, г.Москва, ул.Щербаковская д.3, офис 1107, 1118, ДЦ «Щербаковский»

Телефон: +7 495 668-12-70 (многоканальный)

Факс: +7 495 668-12-70 (доб.304)

E-mail: info@moschip.ru

Skype отдела продаж:

moschip.ru

moschip.ru_4

moschip.ru_6

moschip.ru_9