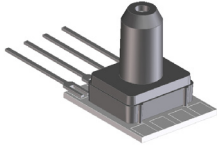


MINIATURE PRESSURE SENSORS

C-Grade
Pressure Sensors



Features

- 0 to 4" H₂O to 0 to 100 PSI Pressure Ranges
- 1 % linearity version
- Temperature Compensated
- Calibrated Zero and Span

Applications

- Medical Instrumentation
- Environmental Controls
- HVAC

General Description

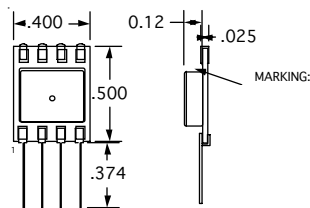
The Miniature series pressure sensors are based upon a proprietary technology to reduce the size of the sensor and yet maintain a high level of performance. This model provides a calibrated millivolt output with superior output offset characteristics. Output offset errors due to change in temperature, stability to warm-up, stability to long time period, and position sensitivity are all significantly reduced when compared to conventional compensation methods. In addition the sensor utilizes a silicon, micromachined, stress concentration enhanced structure to provide a very linear output to measured pressure.

These calibrated and temperature compensated sensors give an accurate and stable output over a wide temperature range. This series is intended for use with non-corrosive, non-ionic working fluids such as air, dry gases and the like. The C-GRADE is a lowest cost version of the millivolt output pressure sensors.

The output of the device is ratiometric to the supply voltage and operation from any D.C. supply voltage.

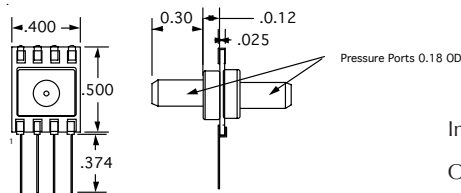
Physical Dimensions

all dimensions in inches

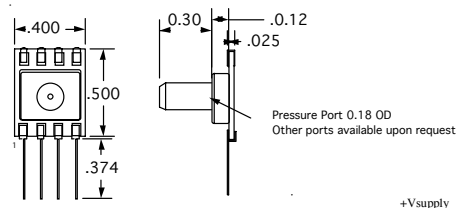


No Pressure Port

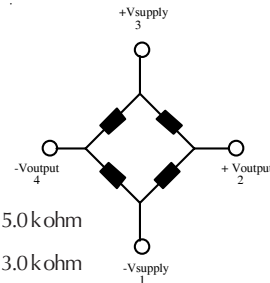
- Marking:
right dot: Silver C-Grade
left dot:
L04: white
L10: yellow
0.3: pink
1.0: green
05: blue
15: purple
30: orange
100: brown



Dual Pressure Port



Single Pressure Port



Input Resistance 5.0 k ohm
Output Resistance 3.0 k ohm

Equivalent Circuit



Pressure Sensor Characteristics Maximum Ratings

| | |
|--|---------|
| Supply Voltage VS | 16 Vdc |
| Common-mode pressure | 50 psig |
| Lead Temperature (soldering 2-4 sec.) | 250°C |

Environmental Specifications

| | |
|---------------------------|---------------------------------|
| Temperature Ranges | |
| Compensated | 0 to 70° C |
| Operating | -25 to 85° C |
| Storage | -40 to 125° C |
| Humidity Limits | 0 to 95% RH (non condensing) |

Standard Pressure Ranges

| No Pressure Port | | Single Pressure Port | | Dual Pressure Port | Proof Pressure |
|-----------------------|--------------------|------------------------|-----------------------|--------------------|----------------|
| Part Number | Operating Pressure | Part Number | Part Number | Part Number | |
| 4 INCH-G-CGRADE-MINI | 0-4 "H2O | 4 INCH-GF-CGRADE-MINI | 4 INCH-D-CGRADE-MINI | | 3 PSI |
| 0.3 PSI-G-CGRADE-MINI | 0-0.3 PSI | 0.3 PSI-GF-CGRADE-MINI | 0.3 PSI-D-CGRADE-MINI | | 3 PSI |
| 10 INCH-G-CGRADE-MINI | 0-10 "H2O | 10 INCH-GF-CGRADE-MINI | 10 INCH-D-CGRADE-MINI | | 5 PSI |
| 1 PSI-G-CGRADE-MINI | 0-1 PSI | 1 PSI-GF-CGRADE-MINI | 1 PSI-D-CGRADE-MINI | | 10 PSI |
| 5 PSI-G-CGRADE-MINI | 0-5 PSI | 5 PSI-GF-CGRADE-MINI | 5 PSI-D-CGRADE-MINI | | 20 PSI |
| 15 PSI-A-CGRADE-MINI | 0-15 PSIA | 15 PSI-AF-CGRADE-MINI | | | 60 PSI |
| 15 PSI-G-CGRADE-MINI | 0-15 PSIG | 15 PSI-GF-CGRADE-MINI | 15 PSI-D-CGRADE-MINI | | 60 PSI |
| 30 PSI-G-CGRADE-MINI | 0-30 PSIG | 30 PSI-GF-CGRADE-MINI | 30 PSI-D-CGRADE-MINI | | 60 PSI |
| 100 PSI-G-CGRADE-MINI | 0-100 PSIG | 100-GF-CGRADE-MINI | | | 150 PSI |

Performance Characteristics for 4 INCH-G-CGRADE-MINI

| Parameter, note 1 | Minimum | Nominal | Maximum | Units |
|---|---------|---------|---------|-------|
| Operating Range, differential pressure | | 4.0 | | "H2O |
| Output Span, note 5 | 23 | 25 | 27 | mV |
| Offset Voltage @ zero differential pressure | | | ±1.5 | mV |
| Offset Temperature Shift (0°C-50°C), note 2 | | | ±1.5 | mV |
| Linearity, hysteresis error, note 4 | | 0.5 | 1.0 | %fs |
| Span Shift (0°C-50°C), note 2 | | | ±2 | %fs |

Performance Characteristics for 10 INCH-G-CGRADE-MINI

| Parameter, note 1 | Minimum | Nominal | Maximum | Units |
|---|---------|---------|---------|-------|
| Operating Range, differential pressure | | 10.0 | | "H2O |
| Output Span, note 5 | 18 | 20 | 22 | mV |
| Offset Voltage @ zero differential pressure | | | ±1.5 | mV |
| Offset Temperature Shift (0°C-70°C), note 2 | | | ±1.5 | mV |
| Linearity, hysteresis error, note 4 | | 0.5 | 1.0 | %fs |
| Span Shift (0°C-70°C), note 2 | | | ±2 | %fs |

Performance Characteristics for 0.3 PSI-G-CGRADE-MINI

| Parameter, note 1 | Minimum | Nominal | Maximum | Units |
|---|---------|---------|---------|-------|
| Operating Range, differential pressure | | 0.3 | | PSI |
| Output Span, note 5 | 18 | 20.0 | 22 | mV |
| Offset Voltage @ zero differential pressure | | | ±1 | mV |
| Offset Temperature Shift (0°C-70°C), note 2 | | | ±1 | mV |
| Linearity, hysteresis error, note 4 | | 0.5 | 1 | %fs |
| Span Shift (0°C-70°C), note 2 | | | ±2 | %fs |

Performance Characteristics for 1 PSI-G-CGRADE-MINI

| Parameter, note 1 | Minimum | Nominal | Maximum | Units |
|---|---------|---------|---------|-------|
| Operating Range, differential pressure | | 1.0 | | PSI |
| Output Span, note 5 | 16 | 18 | 20 | mV |
| Offset Voltage @ zero differential pressure | | | ±1 | mV |
| Offset Temperature Shift (0°C-70°C), note 2 | | | ±1 | mV |
| Linearity, hysteresis error, note 4 | | 0.5 | 1.0 | %fs |
| Span Shift (0°C-70°C), note 2 | | | ±2 | %fs |

Performance Characteristics for 5 PSI-G-CGRADE-MINI

| Parameter, note 1 | Minimum | Nominal | Maximum | Units |
|---|---------|---------|---------|-------|
| Operating Range, differential pressure | | 5.0 | | PSI |
| Output Span, note 5 | 57 | 60 | 63 | mV |
| Offset Voltage @ zero differential pressure | | | ±1 | mV |
| Offset Temperature Shift (0°C-70°C), note 2 | | | ±1 | mV |
| Linearity, hysteresis error, note 4 | | 0.5 | 1.0 | %fs |
| Span Shift (0°C-70°C), note 2 | | | ±2 | %fs |

Performance Characteristics for 15 PSI-G-CGRADE-MINI

| Parameter, note 1 | Minimum | Nominal | Maximum | Units |
|---|---------|---------|---------|-------|
| Operating Range, gage pressure | | 15.0 | | PSIG |
| Output Span, note 5 | 85 | 90.0 | 95 | mV |
| Offset Voltage @ zero gage pressure | | | ±1 | mV |
| Offset Temperature Shift (0°C-70°C), note 2 | | | ±1 | mV |
| Linearity, hysteresis error, note 4 | | 0.5 | 1.0 | %fs |
| Span Shift (0°C-70°C), note 2 | | | ±2 | %fs |



Performance Characteristics for 15 PSI-A-CGRADE-MINI

| Parameter, note 1 | Minimum | Nominal | Maximum | Units |
|---|---------|---------|---------|---------|
| Operating Range, absolute pressure | | 15.0 | | PSIA5mV |
| Output Span, note 5 | 85 | 90.0 | 94 | mV |
| Offset Voltage @ zero absolute pressure | | | ±1 | mV |
| Offset Temperature Shift (0°C-70°C), note 2 | | | ±1 | %fs |
| Linearity, hysteresis error, note 4 | | 0.5 | 1.0 | %fs |
| Span Shift (0°C-70°C), note 2 | | | ±2 | |

Performance Characteristics for 30 PSI-G-CGRADE-MINI

| Parameter, note 1 | Minimum | Nominal | Maximum | Units |
|---|---------|---------|---------|-------|
| Operating Range, gage pressure | | 30.0 | | PSI |
| Output Span, note 5 | 85 | 90.0 | 95 | mV |
| Offset Voltage @ zero pressure | | | ±1 | mV |
| Offset Temperature Shift (0°C-70°C), note 2 | | | ±1 | mV |
| Linearity, hysteresis error, note 4 | | 0.5 | 1.0 | %fs |
| Span Shift (0°C-70°C), note 2 | | | ±2 | %fs |

Performance Characteristics for 100 PSI-G-CGRADE-MINI

| Parameter, note 1 | Minimum | Nominal | Maximum | Units |
|---|---------|---------|---------|-------|
| Operating Range, gage pressure | | 100.0 | | PSI |
| Output Span, note 5 | 95 | 100.0 | 105 | mV |
| Offset Voltage @ zero pressure | | | ±1 | mV |
| Offset Temperature Shift (0°C-70°C), note 2 | | | ±1 | mV |
| Linearity, hysteresis error, note 4 | | 0.5 | 1.0 | %fs |
| Span Shift (0°C-70°C), note 2 | | | ±2 | %fs |

Specification Notes

NOTE 1: ALL PARAMETERS ARE MEASURED AT 12.0 VOLT EXCITATION, FOR THE NOMINAL FULL SCALE PRESSURE AND ROOM TEMPERATURE UNLESS OTHERWISE SPECIFIED. PRESSURE MEASUREMENTS ARE WITH POSITIVE PRESSURE APPLIED TO PORT B.

NOTE 2: SHIFT IS RELATIVE TO 25°C.

NOTE 3: SHIFT IS WITHIN THE FIRST HOUR OF EXCITATION APPLIED TO THE DEVICE.

NOTE 4: MEASURED AT ONE-HALF FULL SCALE RATED PRESSURE USING BEST STRAIGHT LINE CURVE FIT.

NOTE 5: THE VOLTAGE ADDED TO THE OFFSET VOLTAGE AT FULL SCALE PRESSURE.

Pressure Response: for any pressure applied the response time to get to 90% of pressure applied is typically less than 100 useconds.

Данный компонент на территории Российской Федерации

Вы можете приобрести в компании MosChip.

Для оперативного оформления запроса Вам необходимо перейти по данной ссылке:

<http://moschip.ru/get-element>

Вы можете разместить у нас заказ для любого Вашего проекта, будь то серийное производство или разработка единичного прибора.

В нашем ассортименте представлены ведущие мировые производители активных и пассивных электронных компонентов.

Нашей специализацией является поставка электронной компонентной базы двойного назначения, продукции таких производителей как XILINX, Intel (ex.ALTERA), Vicor, Microchip, Texas Instruments, Analog Devices, Mini-Circuits, Amphenol, Glenair.

Сотрудничество с глобальными дистрибьюторами электронных компонентов, предоставляет возможность заказывать и получать с международных складов практически любой перечень компонентов в оптимальные для Вас сроки.

На всех этапах разработки и производства наши партнеры могут получить квалифицированную поддержку опытных инженеров.

Система менеджмента качества компании отвечает требованиям в соответствии с ГОСТ Р ИСО 9001, ГОСТ РВ 0015-002 и ЭС РД 009

Офис по работе с юридическими лицами:

105318, г.Москва, ул.Щербаковская д.3, офис 1107, 1118, ДЦ «Щербаковский»

Телефон: +7 495 668-12-70 (многоканальный)

Факс: +7 495 668-12-70 (доб.304)

E-mail: info@moschip.ru

Skype отдела продаж:

moschip.ru

moschip.ru_4

moschip.ru_6

moschip.ru_9