



BOSCH

Invented for life

Bosch Sensortec

Quickstart Guide

Using the BHI160 / BHI160B shuttle board

Application Note

Document revision	1.1
Document release date	04 January 2017
Document number	BST-BHy1-AN002-01
Technical reference code(s)	0 273 141 230 0 273 141 309

Notes

Data in this document are subject to change without notice. Product photos and pictures are for illustration purposes only and may differ from the real product's appearance.

Index of Contents

1	GENERAL DESCRIPTION	3
2	PC CONNECTION	3
3	DOWNLOADING THE RAM FIRMWARE IMAGE.....	5
4	CONFIGURING THE SENSOR.....	9
5	STREAMING THE DATA.....	12
6	ACTIVATING MORE THAN ONE VIRTUAL SENSOR	13

1 General description

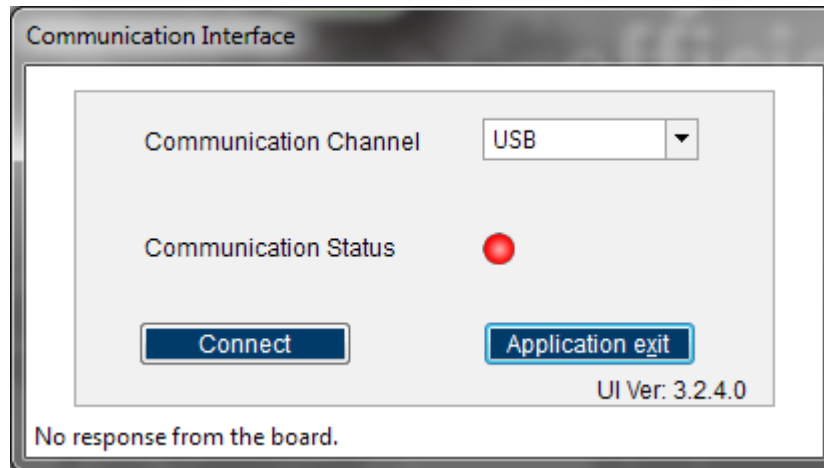
This guide will guide you step by step and explain how to connect the BHI160 shuttleboard to a Windows computer using the Application board 2.0, configuring it and streaming data.

2 PC connection

Make sure that the rightmost 2 DIP switches are in the “ON” position.

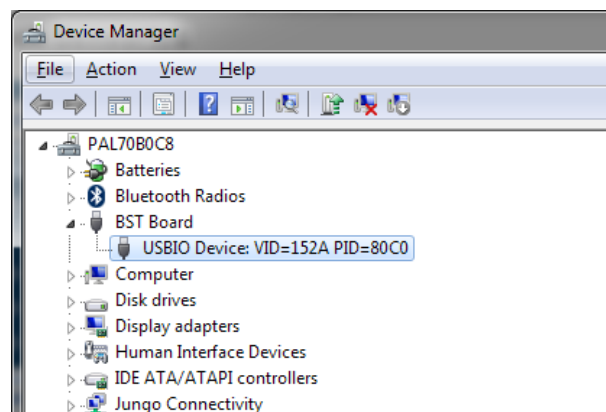


Open the “Development Desktop 2.0” windows application. You will be prompted with the following dialog:



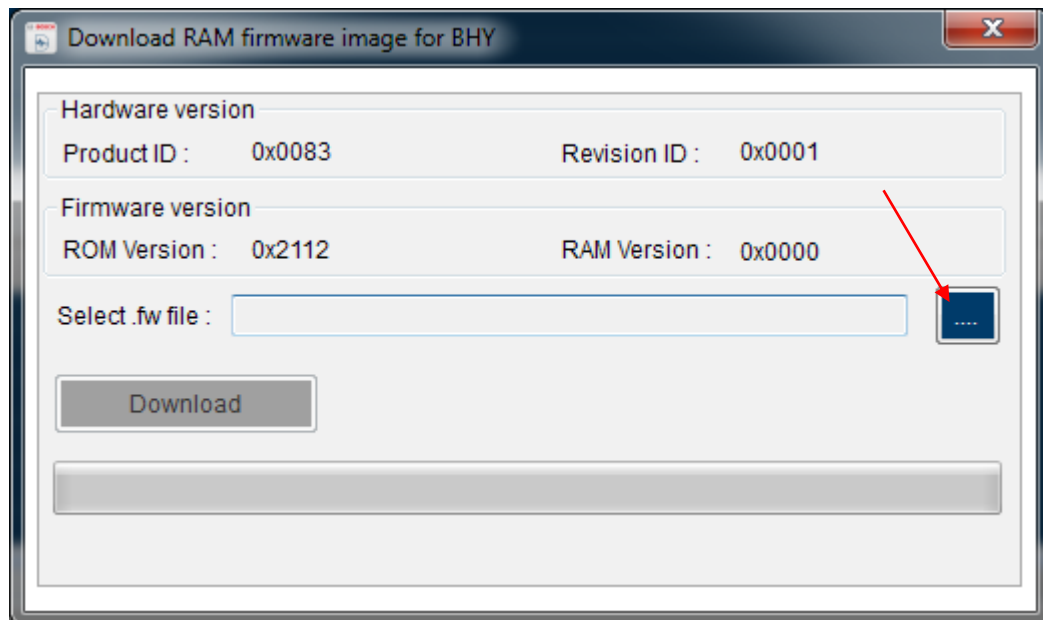
UI version should be greater or equal than 3.1.2.1

Connect the Application board 2.0 to one of the USB ports and turn it on via the sliding switch. Make sure it is connected to the computer in the device manager. It should show up under the “BST Board” category.

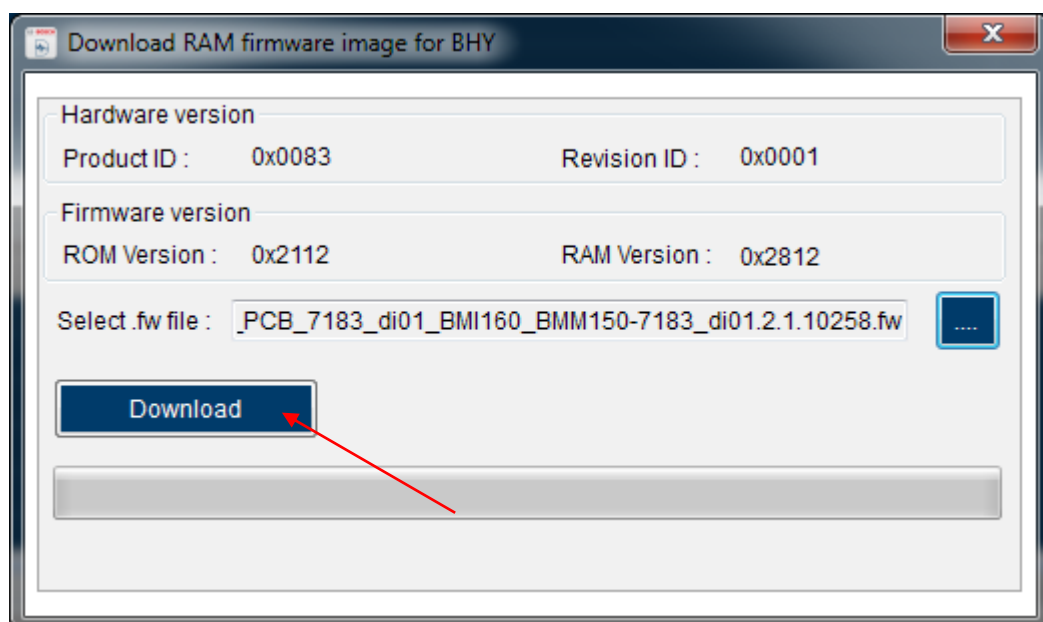


3 Downloading the RAM firmware image

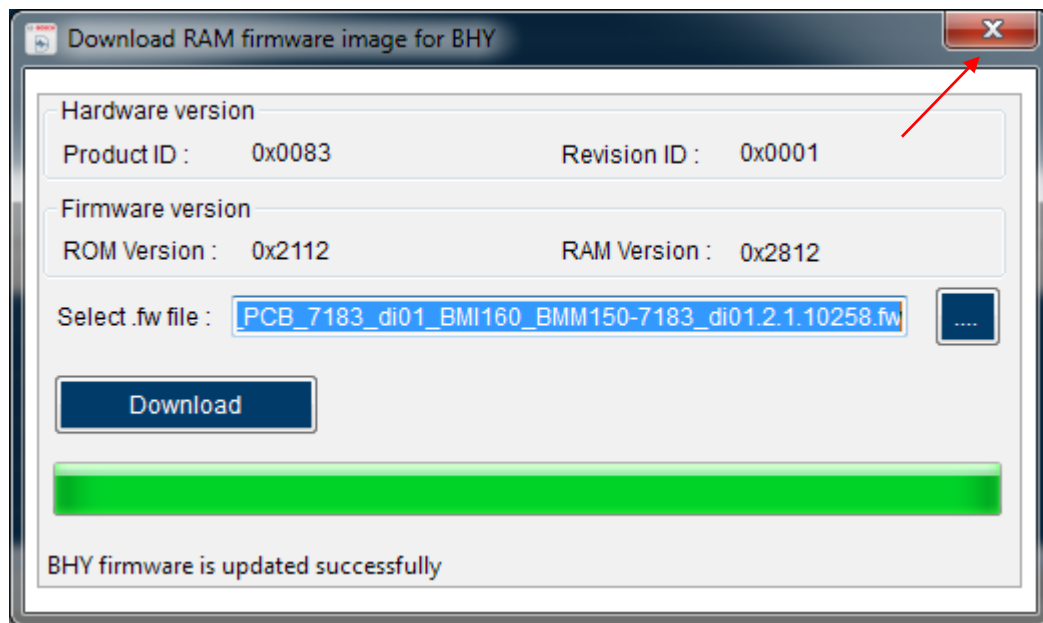
Click connect. Development Desktop will start, recognize the BHI160 and you will be prompted to download the RAM patch.



Click on the "...", and select the "Bosch_PCB_7183_dixx_BMI160_BMM150-7183_dixx.x.x.xxxxx" located in the "C:\Program Files\Bosch Sensortec\Development Desktop 2.0\Firmware\BHI" folder on your computer.

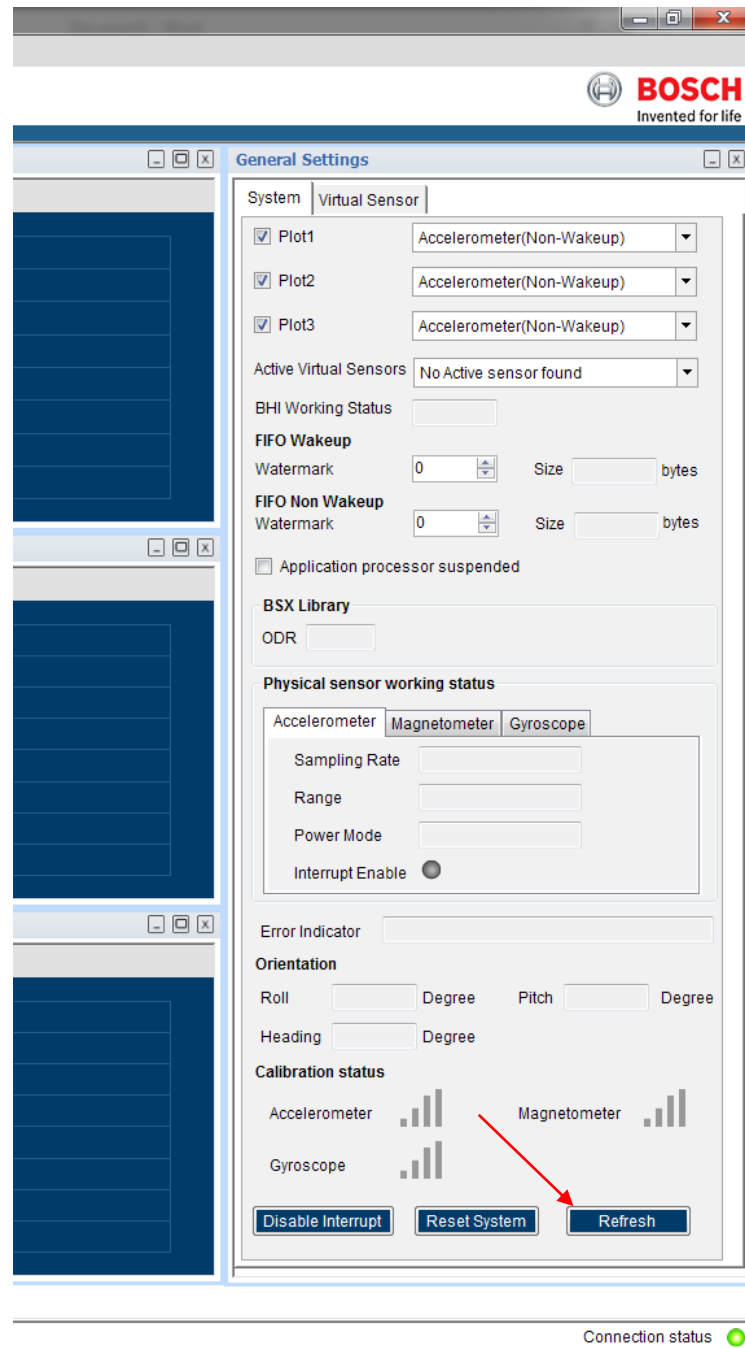


Next, click on download. You should see the text "BHY firmware is updated ...".



Close this dialog.

Then, Click on the refresh button on the bottom right corner.



This will poll the sensor to refresh all the statuses.

You should then see that all the sensors are in the “Power Down” state, with a sampling rate of 0Hz. This means that everything is working normally.

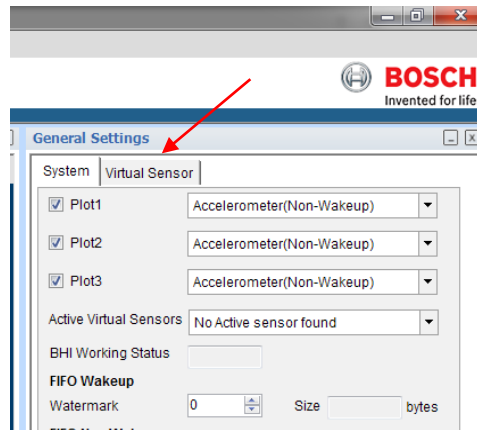
Accelerometer	Magnetometer	Gyroscope
Sampling Rate	0 Hz	
Range	0 g	
Power Mode	Power Down	
Interrupt Enable	<input type="radio"/>	

Accelerometer	Magnetometer	Gyroscope
Sampling Rate	0 Hz	
Range	2000 μ T	
Power Mode	Power Down	
Interrupt Enable	<input type="radio"/>	

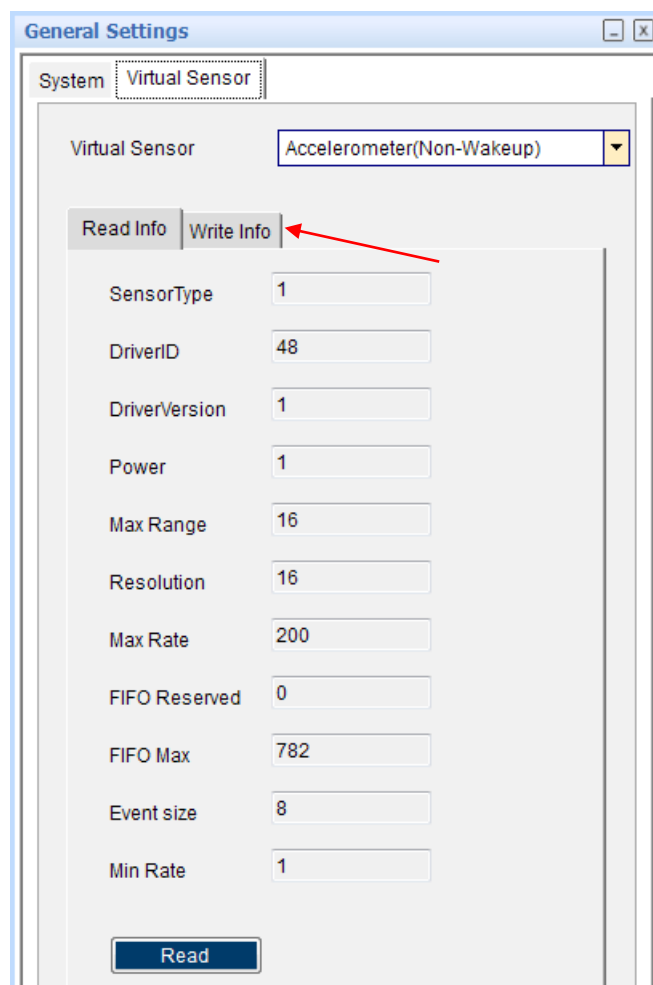
Accelerometer	Magnetometer	Gyroscope
Sampling Rate	0 Hz	
Range	0 $^{\circ}$ /s	
Power Mode	Power Down	
Interrupt Enable	<input type="radio"/>	

4 Configuring the sensor

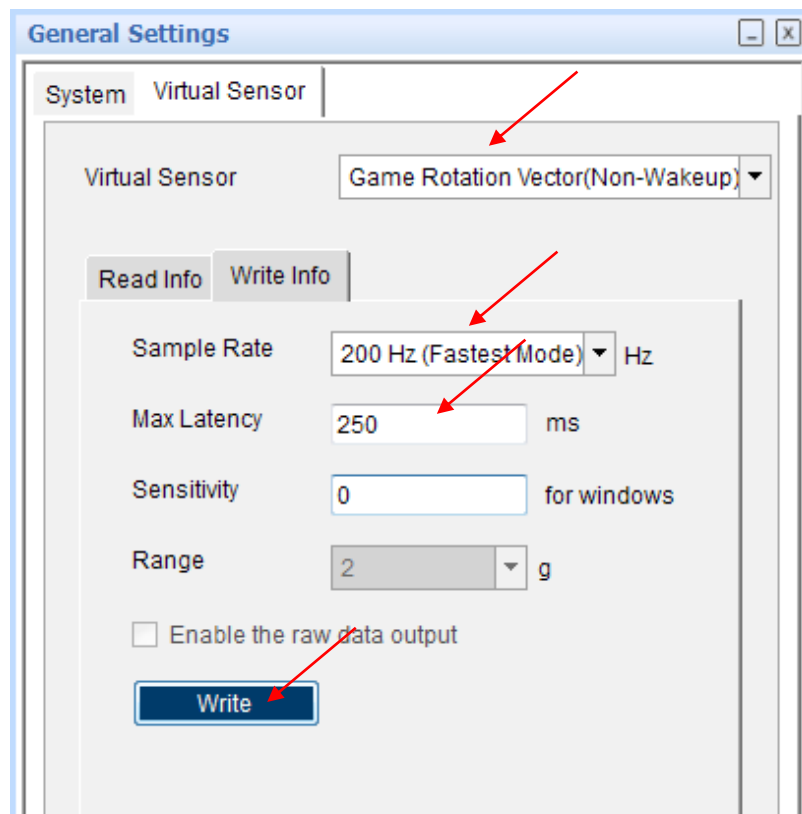
Next step is to enable a virtual sensor. Click on the “Virtual Sensor” tab on the top right.



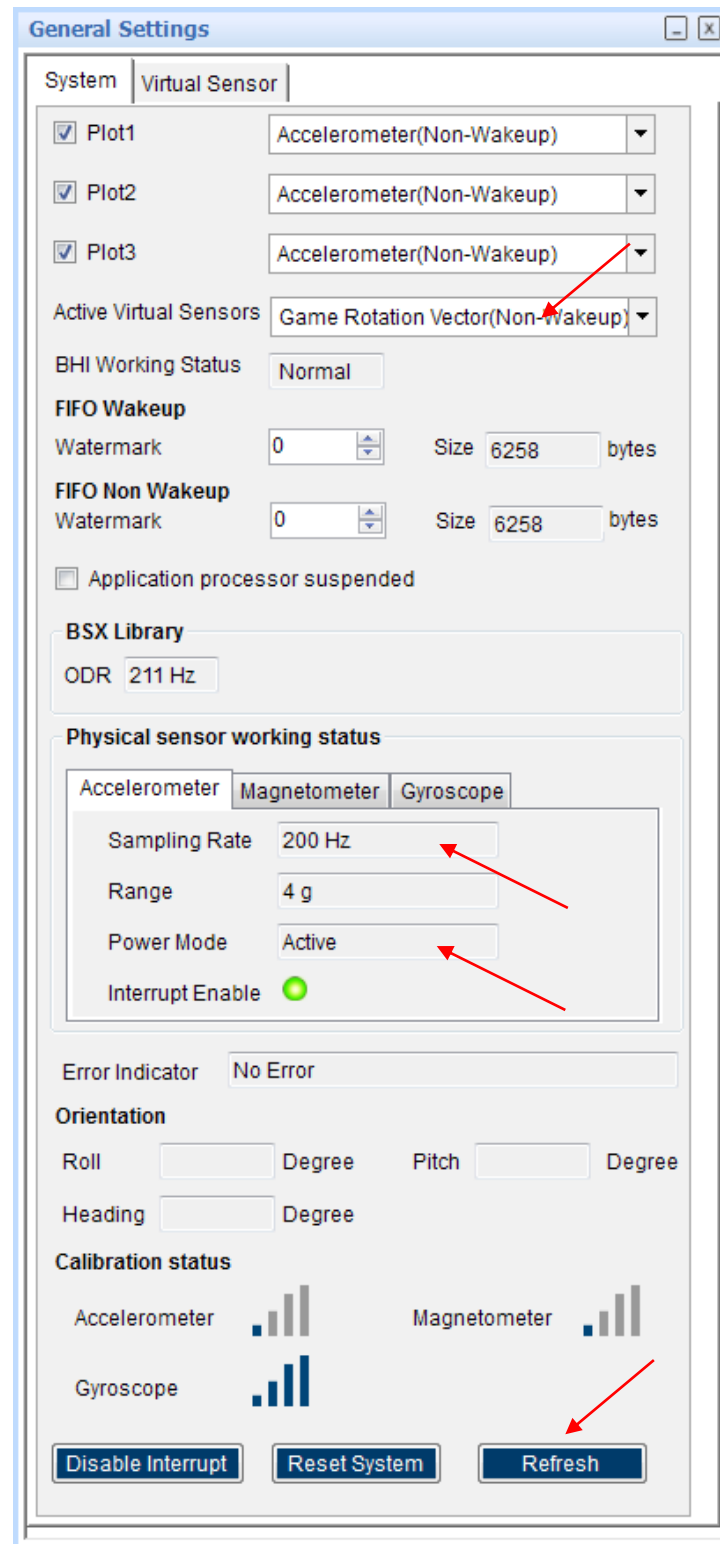
Click on the “Write Info” tab



From the drop-down list, select the sensor “Game Rotation Vector(Non-Wakeup)”. Set the sample rate to 200Hz, and the latency to 250ms. This means that the BHI160 will buffer the data for 250ms before sending it to the Host. Then click Write.

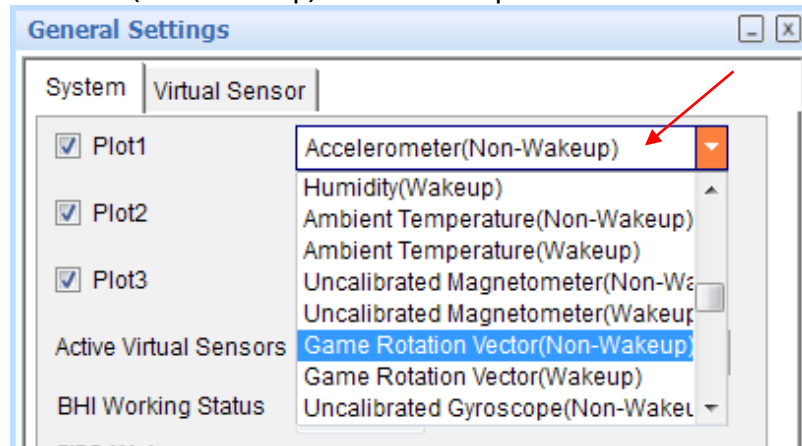


If you go back to the “System” tab again and click refresh, you should see that the accelerometer and gyroscope are now enabled and sampling. You should also now see “Game Rotation Vector (Non-Wakeup)” in the list of active virtual sensors.

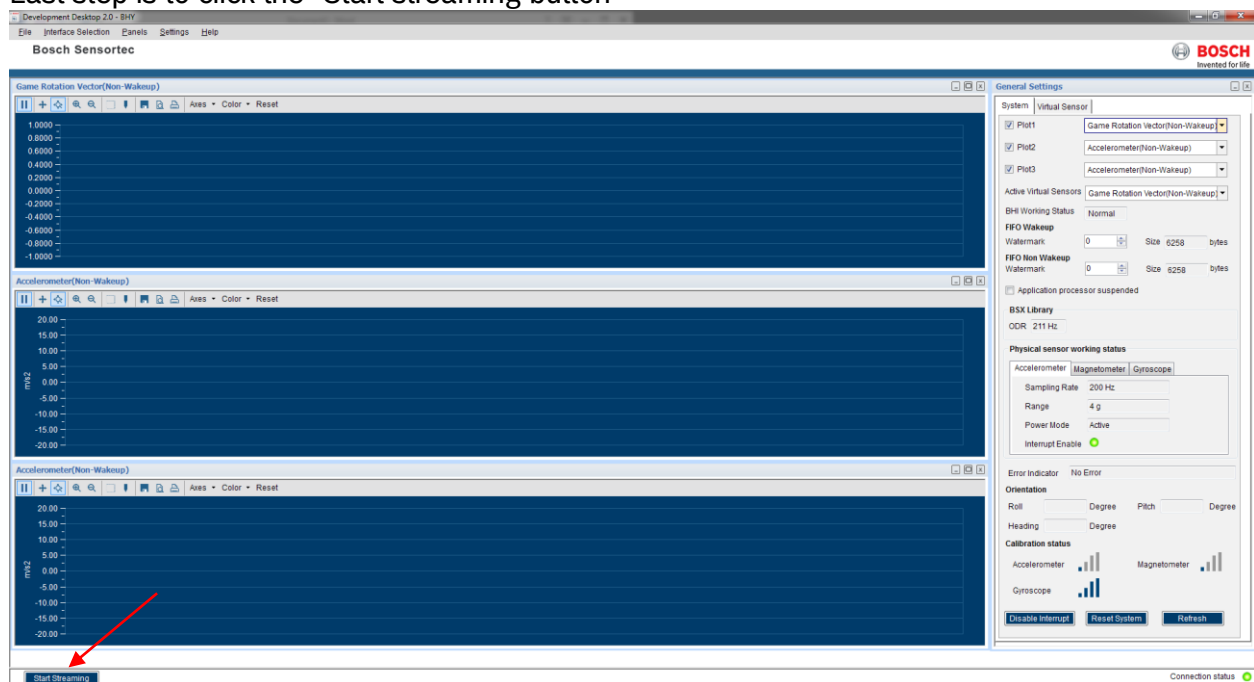


5 Streaming the data

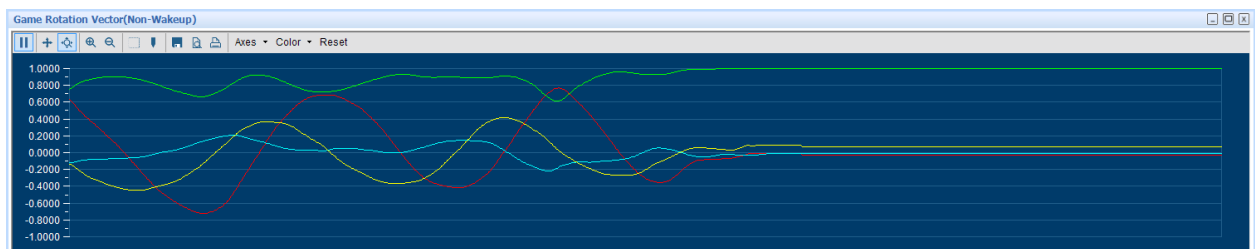
In order to see the data output, you need to select the right sensor to plot in the graphs. Pick “Game Rotation Vector (Non-Wakeup)” from the drop-down list.



Last step is to click the “Start streaming button”

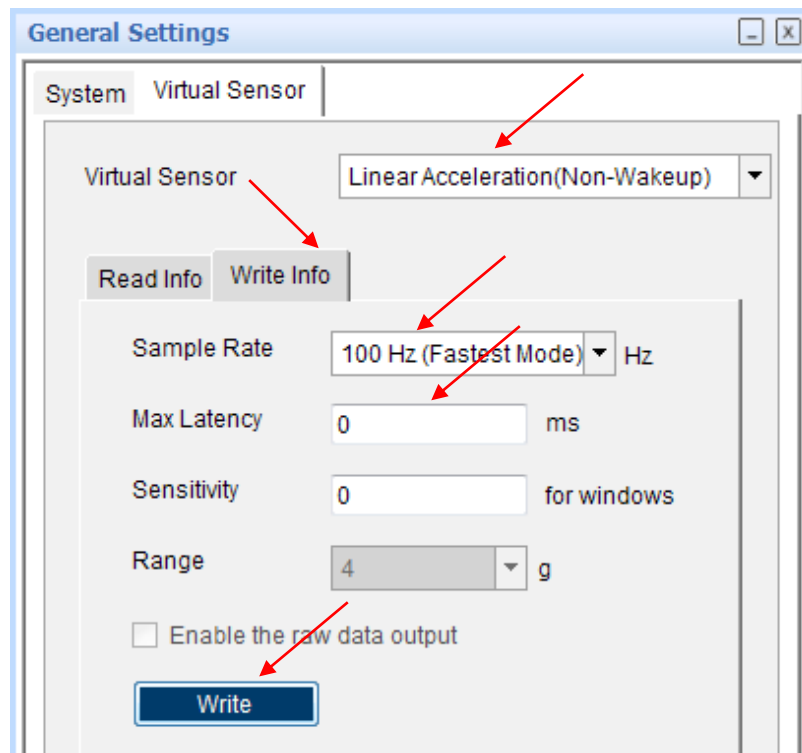


You should now see quaternion data with 200Hz Output data rate, 4Hz Refresh rate ($1/250\text{ms} = 4\text{Hz}$).

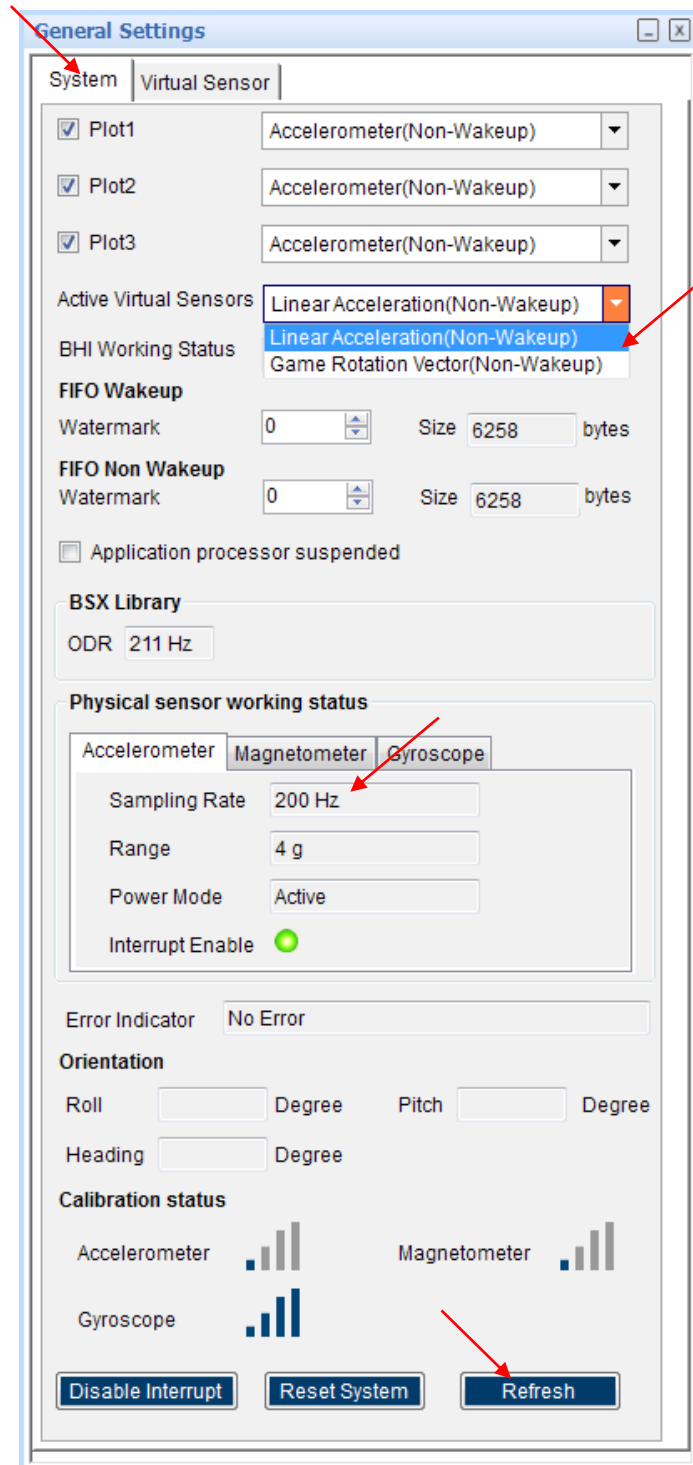


6 Activating more than one virtual sensor

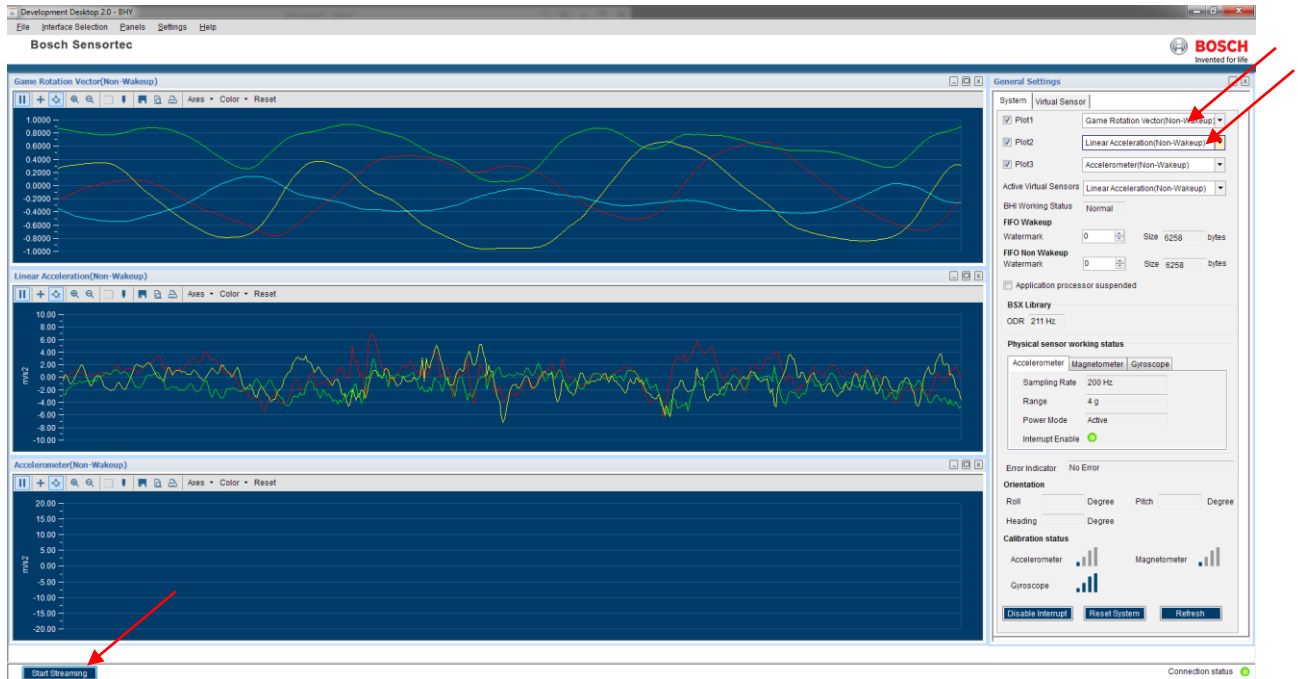
Go back to the Virtual sensor tab, but this time enable “Linear Acceleration (Non-Wakeup)”. Use a sample rate of 100Hz and a latency of 0ms.



Back to the System tab and clicking refresh, you should now see two active virtual sensor. Note that the Accelerometer hardware is still running at 200Hz, even if the Linear acceleration is running at 100Hz.



Configure the plots to see both virtual sensor, click start streaming again and you should now see both outputs simultaneously.



You should now see quaternion data with 200Hz Output data rate, Linear acceleration with 100Hz Output data rate, both at 100Hz Refresh rate.

Now it is worth noting that both game rotation vector AND linear acceleration outputs are refreshed at 100Hz since interrupt rate is dictated by the lower latency enabled sensor, in this case the linear acceleration.

7 Document history and modification

Rev. No	Chapter	Description of modification/changes	Date
0.1	all	Document creation	Mar. 02, 2016
1.0	all	Release	Jul. 25, 2016
1.1		Added 2 new tech. ref. codes: - 0.273.141.309 (BHI160B) - 0.273.141.310 (BHA250B)	Jan. 04, 2017

Bosch Sensortec GmbH
Gerhard-Kindler-Strasse 9
72770 Reutlingen / Germany
Contact@bosch-sensortec.com
www.bosch-sensortec.com
Modifications reserved
Specifications subject to change without notice
Document number: BST-BHy1-AN002-01

Mouser Electronics

Authorized Distributor

Click to View Pricing, Inventory, Delivery & Lifecycle Information:

[Bosch:](#)

[BHI160](#) [BHI160B Shuttle Board](#) [BHI160B](#)

Данный компонент на территории Российской Федерации

Вы можете приобрести в компании MosChip.

Для оперативного оформления запроса Вам необходимо перейти по данной ссылке:

<http://moschip.ru/get-element>

Вы можете разместить у нас заказ для любого Вашего проекта, будь то серийное производство или разработка единичного прибора.

В нашем ассортименте представлены ведущие мировые производители активных и пассивных электронных компонентов.

Нашей специализацией является поставка электронной компонентной базы двойного назначения, продукции таких производителей как XILINX, Intel (ex.ALTERA), Vicor, Microchip, Texas Instruments, Analog Devices, Mini-Circuits, Amphenol, Glenair.

Сотрудничество с глобальными дистрибьюторами электронных компонентов, предоставляет возможность заказывать и получать с международных складов практически любой перечень компонентов в оптимальные для Вас сроки.

На всех этапах разработки и производства наши партнеры могут получить квалифицированную поддержку опытных инженеров.

Система менеджмента качества компании отвечает требованиям в соответствии с ГОСТ Р ИСО 9001, ГОСТ РВ 0015-002 и ЭС РД 009

Офис по работе с юридическими лицами:

105318, г.Москва, ул.Щербаковская д.3, офис 1107, 1118, ДЦ «Щербаковский»

Телефон: +7 495 668-12-70 (многоканальный)

Факс: +7 495 668-12-70 (доб.304)

E-mail: info@moschip.ru

Skype отдела продаж:

moschip.ru

moschip.ru_4

moschip.ru_6

moschip.ru_9