




## MTRTH and MTRTLS TOOL CHANGEOVER KITS INSTALLATION INSTRUCTIONS

© Panduit Corp. 2007

### CHANGEOVER KITS:

KMTRTH	Changeover kit allows for installation of heavy (H) cross-section MRT and MRS style ties in MTRTLS tool. Kit comes complete with one setshear finger (H), one anvil (H), three screws, thread-lock tube and installation instructions.
KMTRTLS	Changeover kit allows for installation of standard (S) and light-heavy (LH) cross-section MRT and MRS style ties in MTRTH tool. Kit comes complete with one setshear finger (LS), two anvils (LH and S), three screws, thread-lock tube and installation instructions.

### SAFETY PRACTICES

	<b>ALWAYS</b> wear safety glasses when using this tool.
	<b>DO NOT</b> place fingers near cutting blade during tool actuation. Fingers may be pinched or injured by cutter blade.
	<b>DO NOT</b> use tool on live electrical sources.

### TO REPLACE ANVIL

Remove two screws holding Anvil onto the tool. A 3/32" Allen Wrench will be required. The screws may be very tight as they have been installed with Loctite®. Once the screws are removed, slide the Anvil towards the front of the tool and downward away from the tool. Set aside old Anvil. \*\* Place new Anvil onto bottom of the tool. The Anvil must straddle the two plates and have the slots toward the rear. When the Anvil is slid backwards, the slots must engage the pins. If done correctly, the hole on each side of the Anvil will align with a tapped mounting hole below. Replace the screws applying a drop of Loctite® to each screw. See pictures below.

**\*\* IF SETSHEAR FINGER IS TO BE REPLACED AS WELL, NOW IS THE TIME TO REPLACE PER THE INSTRUCTIONS BELOW.**

### TO REPLACE SETSHEAR FINGER

Remove a single screw holding the Setshear Finger up onto the Sliding Detent Assembly. Use a 1/16" Allen Wrench to remove the screw. The screw may be tight as it has been installed with Loctite®. Once the screw is removed, slide the Setshear Finger toward the front of the tool. This should disengage it from the Sliding Detent Assembly. Pull the Finger down out of the bottom of the tool. Installation is the reverse of these steps. When replacing the Setshear Finger, the notch on the flat surface of the finger must engage the retaining tab on the Sliding Detent Assembly. See pictures below.

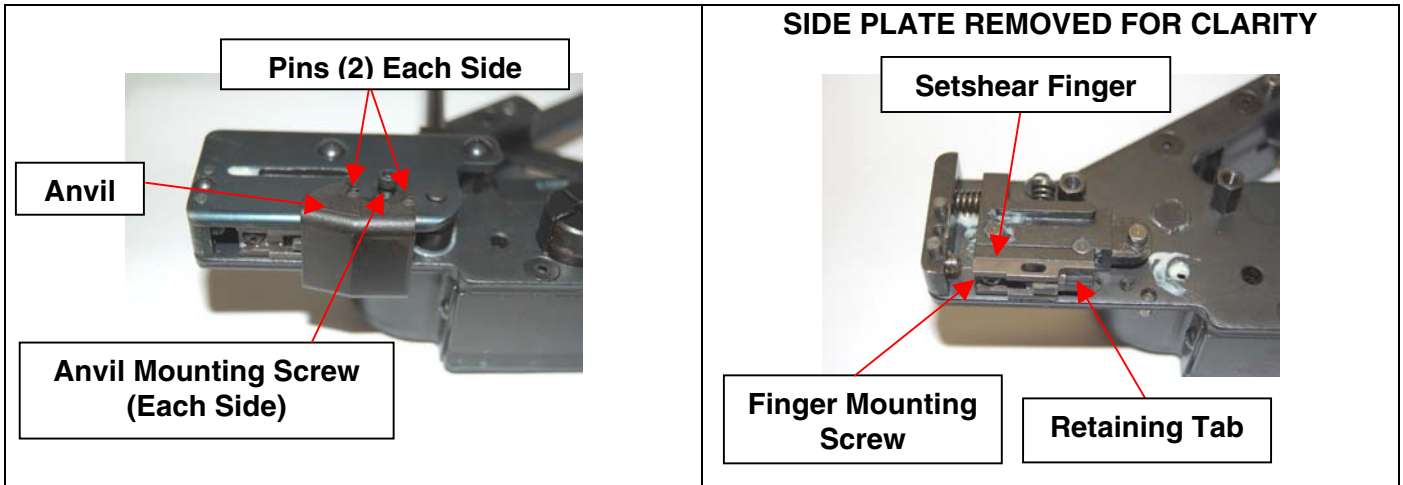
**WHEN COMPLETE, THE LOCATING SET SCREW ON THE FRONT OF THE TOOL WILL NEED TO BE ADJUSTED PRIOR TO TOOL USE.**

® The above names and products are the registered trademarks of their respective corporations.

Website: [www.panduit.com](http://www.panduit.com)  
E-mail: [cs@panduit.com](mailto:cs@panduit.com)



**Technical Support:**  
See Page 4 for contact  
information.



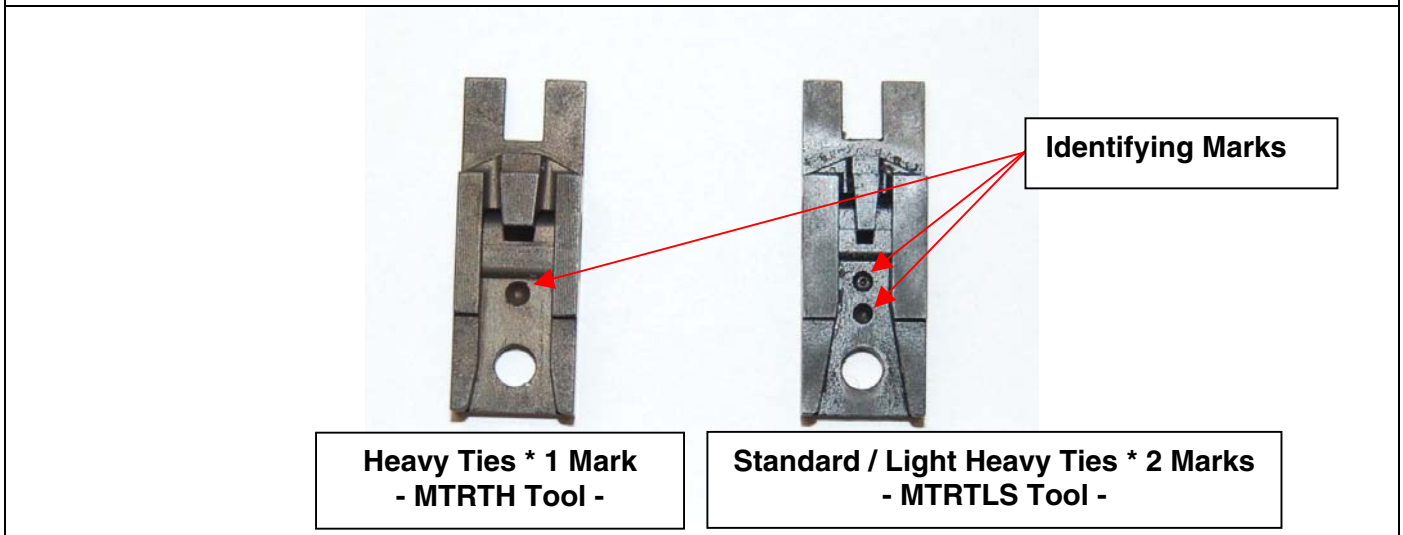
**INSTALLATION OF ANVIL OR SETSHEAR FINGER**

**TO REPLACE ANVIL OR SETSHEAR FINGER:**

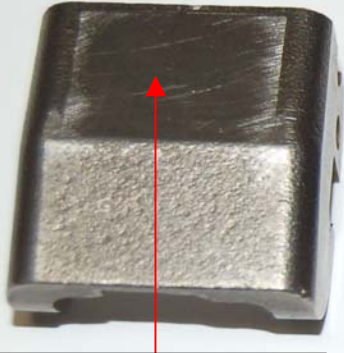
**NOTE:** Replace or install Anvil or Setshear Finger per table below.

	MTRTH TOOL		MTRTLS TOOL	
	HEAVY	STANDARD	LIGHT HEAVY	
ANVIL MARKS	0	1	2	
SETSHEAR FINGER MARKS	1	2	2	

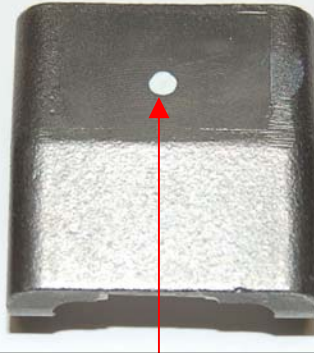
**SETSHEAR FINGER DIFFERENTIATION**



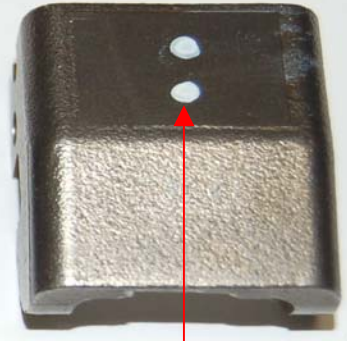
**ANVIL DIFFERENTIATION**



**Heavy Ties \* No Mark  
- MTRTH Tool -**

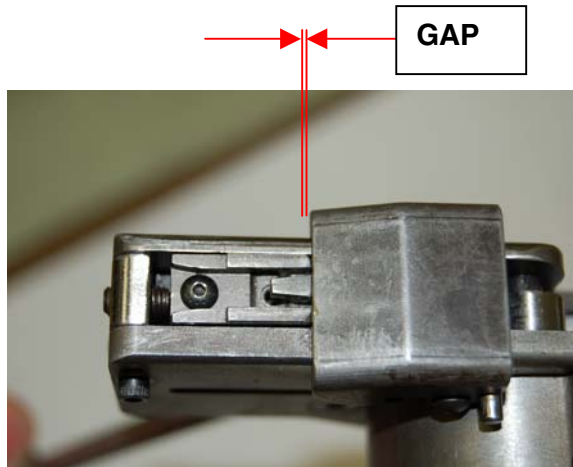
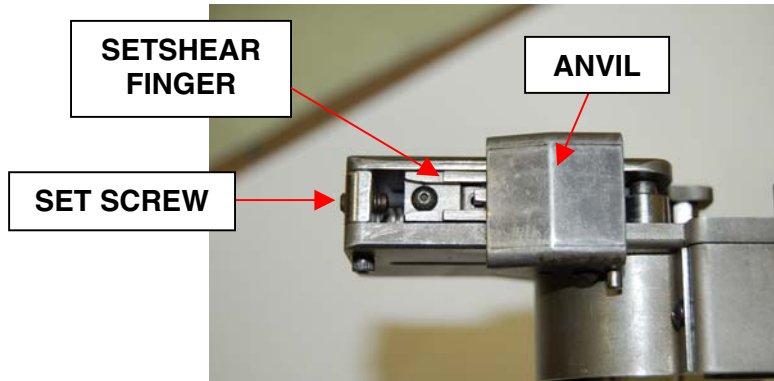


**Standard Ties \* 1 Mark  
- MTRTLS Tool -**



**Light Heavy Ties \* 2 Marks  
- MTRTLS Tool -**

**SETSHEAR FINGER STOP ADJUSTMENT**



After each Anvil change, it may be necessary to adjust the Set Screw Stop in the front of the tool. This stop is used for setting how closely the tie tail is cut off. With Cut-Off Handle moved forward, the Set Screw is turned inward or outward to adjust gap between Setshear Finger and Anvil. (CW from tool front moves Finger backwards, CCW moves Finger forward to front of tool.) To set the Set Screw, have Cut-Off Handle all the way forward. Turn the Set Screw CW until the Setshear Finger just touches the Anvil. Back the Set Screw out 1/4 turn by turning CCW. Recheck clearance. The Setshear Finger must not hit or scrape the Anvil. A gap that is too large will cause poor, or no tie cut-offs.

***NOTE: SETSHEAR FINGER MUST CLEAR ANVIL.***

## **CONTACT INFORMATION • For Technical Support:**

*PANDUIT* USA, Tinley Park, IL  
USA Tel: 888-506-5400, ext. 3255 • Fax: 630-759-7532  
Website: [www.panduit.com](http://www.panduit.com) • E-mail: [cs@panduit.com](mailto:cs@panduit.com)

*PANDUIT* Latino America, Guadalajara, Jalisco, Mexico  
Latino America Tel.: 52 (333) 666 2501 • Fax.: 52 (333) 666 2510  
Website: [www.panduit.com](http://www.panduit.com) • E-mail: [cs-la@panduit.com](mailto:cs-la@panduit.com)

*PANDUIT* Europe, EMEA Headquarters  
West World, Westgate, London  
England Tel: 44 208 601 7200 • Fax: 44 208 601 7209  
Website: [www.panduit.com/emea](http://www.panduit.com/emea) • E-mail: [cs-emea@panduit.com](mailto:cs-emea@panduit.com)  
Deutsch Tel: 069 9509 6129 • Fax: 069 9509 6130  
Français Tel: 01 4191 8572 • Fax: 01 4191 8573  
Spain Tel: 91 377 8107 • Fax: 91 377 8108

*PANDUIT* Australia, Melbourne (Head Office)  
Dandenong, VIC  
Aus. Tel: 1-800-PANDUIT / 1-800-726-384 • Fax: 1-800-637-889  
Email: [cs-aus@panduit.com](mailto:cs-aus@panduit.com)

*PANDUIT* United Arab Emirates  
Dubai Internet City, Dubai  
Tel: +971 4 3625435 /6 • Fax: +971 4 3908830  
E-mail: [cs-uae@panduit.com](mailto:cs-uae@panduit.com)

*PANDUIT* China, Beijing  
Xuanwumen Xidajie Xicheng District  
Beijing, China  
Tel: 8610 6641 0371 • Fax: 8610 6641 0375  
Toll Free Customer Service - North China: 10800 6500 211 • South China: 10800 2650 211  
E-mail: [cs-ap@panduit.com](mailto:cs-ap@panduit.com)

*PANDUIT* Singapore – Sales Office  
Singapore, Republic of Singapore  
Tel: 65 6379 6700 • Fax: 65 6379 6759  
E-mail: [cs-ap@panduit.com](mailto:cs-ap@panduit.com)

## Данный компонент на территории Российской Федерации

### Вы можете приобрести в компании MosChip.

Для оперативного оформления запроса Вам необходимо перейти по данной ссылке:

<http://moschip.ru/get-element>

Вы можете разместить у нас заказ для любого Вашего проекта, будь то серийное производство или разработка единичного прибора.

В нашем ассортименте представлены ведущие мировые производители активных и пассивных электронных компонентов.

Нашей специализацией является поставка электронной компонентной базы двойного назначения, продукции таких производителей как XILINX, Intel (ex.ALTERA), Vicor, Microchip, Texas Instruments, Analog Devices, Mini-Circuits, Amphenol, Glenair.

Сотрудничество с глобальными дистрибьюторами электронных компонентов, предоставляет возможность заказывать и получать с международных складов практически любой перечень компонентов в оптимальные для Вас сроки.

На всех этапах разработки и производства наши партнеры могут получить квалифицированную поддержку опытных инженеров.

Система менеджмента качества компании отвечает требованиям в соответствии с ГОСТ Р ИСО 9001, ГОСТ РВ 0015-002 и ЭС РД 009

### Офис по работе с юридическими лицами:

105318, г.Москва, ул.Щербаковская д.3, офис 1107, 1118, ДЦ «Щербаковский»

Телефон: +7 495 668-12-70 (многоканальный)

Факс: +7 495 668-12-70 (доб.304)

E-mail: [info@moschip.ru](mailto:info@moschip.ru)

Skype отдела продаж:

moschip.ru

moschip.ru\_4

moschip.ru\_6

moschip.ru\_9