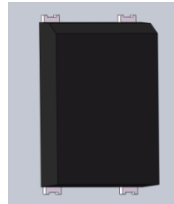


**3.0A SURFACE MOUNT FAST GLASS PASSIVATED BRIDGE RECTIFIER**
**NEW PRODUCT**
**Product Summary** (@T<sub>A</sub> = +25°C)

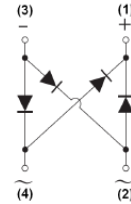
V <sub>RRM</sub> (V)	I <sub>O</sub> (A)	V <sub>FM</sub> (V)	I <sub>R</sub> (μA)
1000,800,600, 400,200,100	3.0	1.3	5

**Description and Applications**

Suitable for AC to DC bridge full wave rectification for SMPS, LED lighting, adapter, battery charger, home appliances, office equipment, and telecommunication applications.



Top View



Internal Schematic

**Features and Benefits**

- Glass Passivated Die Construction
- Miniature Package Saves Space on PC Boards
- Low Leakage Current
- Ideal for SMT Manufacturing
- Low Forward Voltage Drop
- Fast Recovery Time for Higher Efficiency
- Surge Overload Rating to 100A Peak
- **Lead-Free Finish; RoHS Compliant (Notes 1 & 2)**
- **Halogen and Antimony Free. "Green" Device (Note 3)**

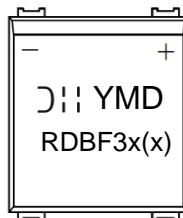
**Mechanical Data**

- Case: DBF
- Case Material: Molded Plastic. UL Flammability Classification Rating 94V-0
- Moisture Sensitivity: Level 1 per J-STD-020
- Terminals: Lead Free Plating (Matte Tin Finish). Solderable per MIL-STD-202, Method 208 **Ⓜ3**
- Polarity: As Marked on Body
- Weight: 0.02 grams (Approximate)

**Ordering Information** (Note 4)

Part Number	Compliance	Case	Packaging
RDBF310-13	Commercial	DBF	3,000/Tape & Reel
RDBF38-13	Commercial	DBF	3,000/Tape & Reel
RDBF36-13	Commercial	DBF	3,000/Tape & Reel
RDBF34-13	Commercial	DBF	3,000/Tape & Reel
RDBF32-13	Commercial	DBF	3,000/Tape & Reel
RDBF31-13	Commercial	DBF	3,000/Tape & Reel

- Notes:
1. EU Directive 2002/95/EC (RoHS), 2011/65/EU (RoHS 2) & 2015/863/EU (RoHS 3) compliant. All applicable RoHS exemptions applied.
  2. See <https://www.diodes.com/quality/lead-free/> for more information about Diodes Incorporated's definitions of Halogen- and Antimony-free, "Green" and Lead-free.
  3. Halogen- and Antimony-free "Green" products are defined as those which contain <900ppm bromine, <900ppm chlorine (<1500ppm total Br + Cl) and <1000ppm antimony compounds.
  4. For packaging details, go to our website at <https://www.diodes.com/design/support/packaging/diodes-packaging/>.

**Marking Information**


RDBF3x(x) = Product Type Marking Code  
 YMD = Manufacturers' Code Marking  
 YMD = Date Code Marking  
 Y = Last Digit of Year (ex: 8 = 2018)  
 M = See Month/Code Table Below  
 D = Day 1 to 9 = 1 to 9; Day 10 to 31 = A to V

Month	Jan	Feb	Mar	Apr	May	Jun	Jul	Aug	Sep	Oct	Nov	Dec
Code	1	2	3	4	5	6	7	8	9	O	N	D

**Maximum Ratings and Electrical Characteristics** (@T<sub>A</sub> = +25°C, unless otherwise specified.)

Single phase, half wave, 60Hz, resistive or inductive load.  
For capacitive load, derate current by 20%.

Characteristic	Symbol	RDBF31	RDBF32	RDBF34	RDBF36	RDBF38	RDBF310	Unit
Peak Repetitive Reverse Voltage	V <sub>RRM</sub>	100	200	400	600	800	1000	V
Working Peak Reverse Voltage	V <sub>RWM</sub>							
DC Blocking Voltage	V <sub>R</sub>							
RMS Reverse Voltage	V <sub>R(RMS)</sub>	70	140	280	420	560	700	V
Average Rectified Output Current (Note 5) @ T <sub>C</sub> = +120°C	I <sub>O</sub>	3.0						A
Non-Repetitive Peak Forward Surge Current, 8.3ms Single Half Sine-Wave Superimposed on Rated Load	I <sub>FSM</sub>	100						A
I <sup>2</sup> t Rating for Fusing (1ms < t < 8.3ms)	I <sup>2</sup> t	41.5						A <sup>2</sup> S
Maximum Forward Voltage (Per Element) @ I <sub>F</sub> =2.5A	V <sub>FM</sub>	1.3						V
Maximum Reverse Recovery Time (Note 7)	t <sub>RR</sub>	150			250	500		ns
Peak Reverse Current @ T <sub>A</sub> =+25°C	I <sub>R</sub>	5.0						μA
At Rated DC Blocking Voltage @ T <sub>A</sub> =+125°C		500						
Typical Total Capacitance (Per Element) (Note 8)	C <sub>T</sub>	45						pF

**Thermal Characteristics**

Characteristic	Symbol	Value	Unit
Typical Thermal Resistance, Junction to Ambient (Note 6) (Per Element)	R <sub>θJA</sub>	15	°C/W
Typical Thermal Resistance, Junction to Case (Per Element)	R <sub>θJC</sub>	5	°C/W
Operating and Storage Temperature Range	T <sub>J</sub> , T <sub>STG</sub>	-55 to +150	°C

- Notes:
- Device mounted on glass epoxy PC board with 1.3mm<sup>2</sup> solder pad.
  - Device mounted on 15mmx12mmx1.6mm Al pad attach 195mmx110mmx10mm steel plate.
  - Reverse recovery test conditions: I<sub>F</sub>=0.5A, I<sub>R</sub>=1.0A, I<sub>RR</sub>=0.25A
  - Measured at 1.0MHz and applied reverse voltage of 4.0V D.C.

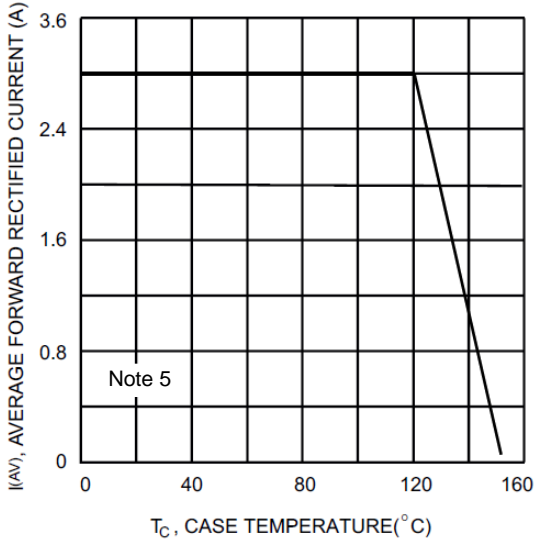


Fig. 1 Output Current Derating Curve

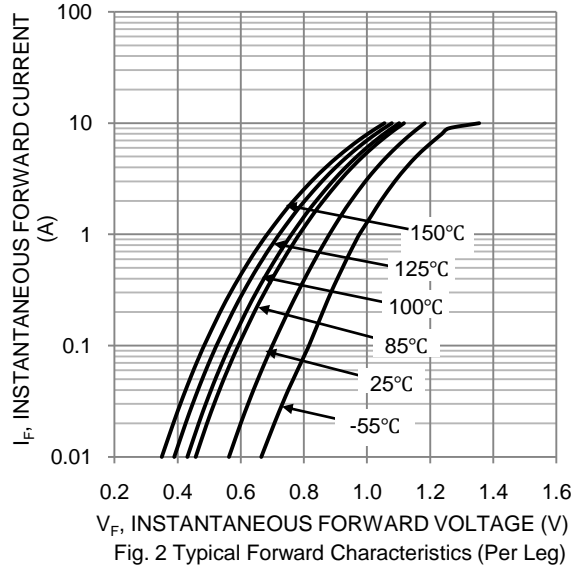


Fig. 2 Typical Forward Characteristics (Per Leg)

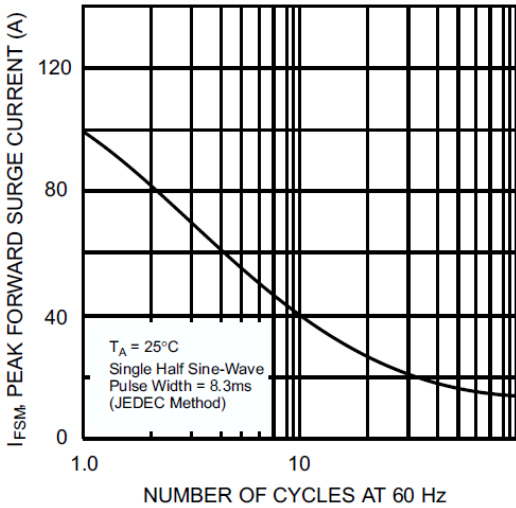


Fig.3 Maximum Non-Repetitive Surge Current

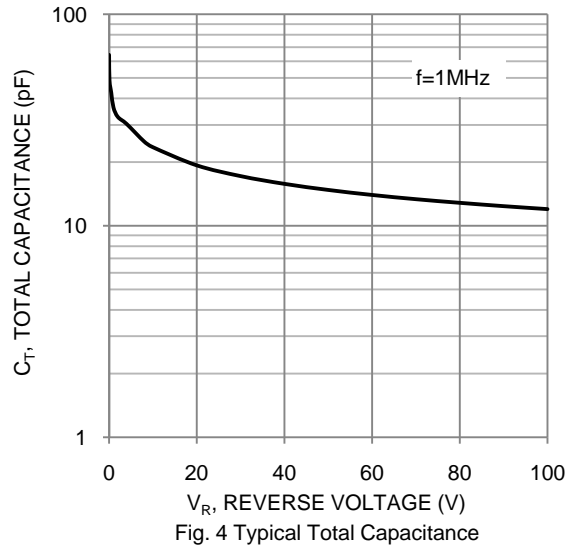


Fig. 4 Typical Total Capacitance

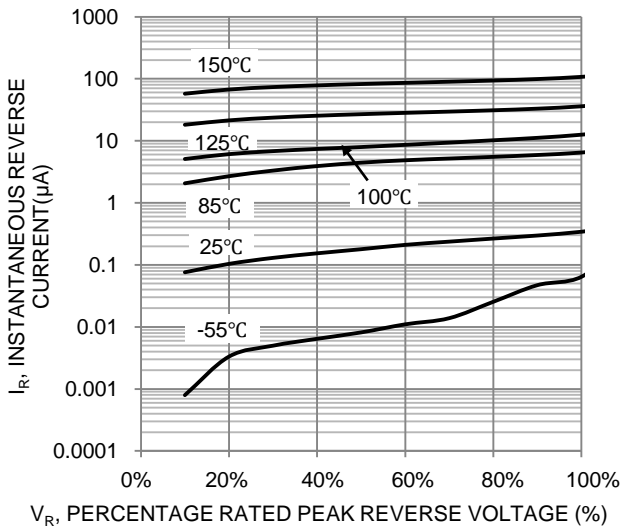
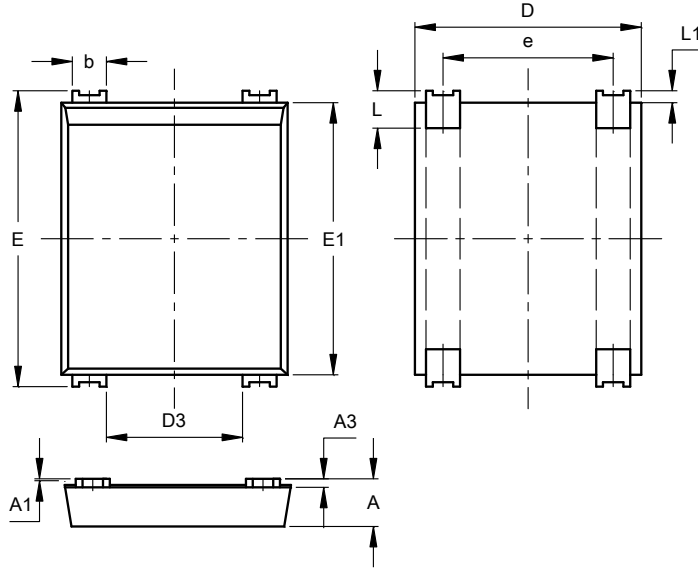


Fig.5 Typical Reverse Characteristics

**Package Outline Dimensions**

Please see <http://www.diodes.com/package-outlines.html> for the latest version.

DBF

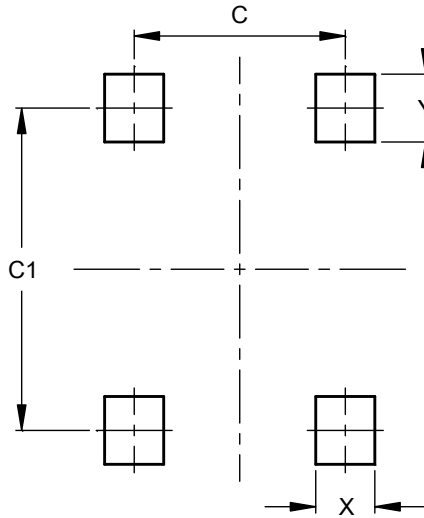


DBF			
Dim	Min	Max	Typ
A	1.30	1.50	--
A1	0.04	0.12	--
A3	0.15	0.35	--
b	0.80	1.20	--
D	6.45	6.85	--
D3	3.80	4.20	--
E	8.50	8.90	--
E1	7.80	8.20	--
e	4.80	5.20	--
L	0.80	1.40	--
L1	0.30	0.40	--
All Dimensions in mm			

**Suggested Pad Layout**

Please see <http://www.diodes.com/package-outlines.html> for the latest version.

DBF



Dimensions	Value (in mm)
C	5.00
C1	7.60
X	1.40
Y	1.60

**IMPORTANT NOTICE**

DIODES INCORPORATED MAKES NO WARRANTY OF ANY KIND, EXPRESS OR IMPLIED, WITH REGARDS TO THIS DOCUMENT, INCLUDING, BUT NOT LIMITED TO, THE IMPLIED WARRANTIES OF MERCHANTABILITY AND FITNESS FOR A PARTICULAR PURPOSE (AND THEIR EQUIVALENTS UNDER THE LAWS OF ANY JURISDICTION).

Diodes Incorporated and its subsidiaries reserve the right to make modifications, enhancements, improvements, corrections or other changes without further notice to this document and any product described herein. Diodes Incorporated does not assume any liability arising out of the application or use of this document or any product described herein; neither does Diodes Incorporated convey any license under its patent or trademark rights, nor the rights of others. Any Customer or user of this document or products described herein in such applications shall assume all risks of such use and will agree to hold Diodes Incorporated and all the companies whose products are represented on Diodes Incorporated website, harmless against all damages.

Diodes Incorporated does not warrant or accept any liability whatsoever in respect of any products purchased through unauthorized sales channel. Should Customers purchase or use Diodes Incorporated products for any unintended or unauthorized application, Customers shall indemnify and hold Diodes Incorporated and its representatives harmless against all claims, damages, expenses, and attorney fees arising out of, directly or indirectly, any claim of personal injury or death associated with such unintended or unauthorized application.

Products described herein may be covered by one or more United States, international or foreign patents pending. Product names and markings noted herein may also be covered by one or more United States, international or foreign trademarks.

This document is written in English but may be translated into multiple languages for reference. Only the English version of this document is the final and determinative format released by Diodes Incorporated.

**LIFE SUPPORT**

Diodes Incorporated products are specifically not authorized for use as critical components in life support devices or systems without the express written approval of the Chief Executive Officer of Diodes Incorporated. As used herein:

A. Life support devices or systems are devices or systems which:

1. are intended to implant into the body, or
2. support or sustain life and whose failure to perform when properly used in accordance with instructions for use provided in the labeling can be reasonably expected to result in significant injury to the user.

B. A critical component is any component in a life support device or system whose failure to perform can be reasonably expected to cause the failure of the life support device or to affect its safety or effectiveness.

Customers represent that they have all necessary expertise in the safety and regulatory ramifications of their life support devices or systems, and acknowledge and agree that they are solely responsible for all legal, regulatory and safety-related requirements concerning their products and any use of Diodes Incorporated products in such safety-critical, life support devices or systems, notwithstanding any devices- or systems-related information or support that may be provided by Diodes Incorporated. Further, Customers must fully indemnify Diodes Incorporated and its representatives against any damages arising out of the use of Diodes Incorporated products in such safety-critical, life support devices or systems.

Copyright © 2018, Diodes Incorporated

[www.diodes.com](http://www.diodes.com)

## Данный компонент на территории Российской Федерации

### Вы можете приобрести в компании MosChip.

Для оперативного оформления запроса Вам необходимо перейти по данной ссылке:

<http://moschip.ru/get-element>

Вы можете разместить у нас заказ для любого Вашего проекта, будь то серийное производство или разработка единичного прибора.

В нашем ассортименте представлены ведущие мировые производители активных и пассивных электронных компонентов.

Нашей специализацией является поставка электронной компонентной базы двойного назначения, продукции таких производителей как XILINX, Intel (ex.ALTERA), Vicor, Microchip, Texas Instruments, Analog Devices, Mini-Circuits, Amphenol, Glenair.

Сотрудничество с глобальными дистрибьюторами электронных компонентов, предоставляет возможность заказывать и получать с международных складов практически любой перечень компонентов в оптимальные для Вас сроки.

На всех этапах разработки и производства наши партнеры могут получить квалифицированную поддержку опытных инженеров.

Система менеджмента качества компании отвечает требованиям в соответствии с ГОСТ Р ИСО 9001, ГОСТ РВ 0015-002 и ЭС РД 009

### Офис по работе с юридическими лицами:

105318, г.Москва, ул.Щербаковская д.3, офис 1107, 1118, ДЦ «Щербаковский»

Телефон: +7 495 668-12-70 (многоканальный)

Факс: +7 495 668-12-70 (доб.304)

E-mail: [info@moschip.ru](mailto:info@moschip.ru)

Skype отдела продаж:

moschip.ru

moschip.ru\_4

moschip.ru\_6

moschip.ru\_9