

**PLEASE CHECK WWW.MOLEX.COM FOR LATEST PART INFORMATION**

**Part Number:** [0003122022](#)  
**Status:** **Active**  
**Description:** 3.18mm (.125") Diameter, HCS-125 Pin and Socket Plug Housing, 2 Circuits, Single Row, With and Without Panel Mount Ears

**Documents:**

[3D Model](#) [RoHS Certificate of Compliance \(PDF\)](#)  
[Drawing \(PDF\)](#)

**Agency Certification**

CSA LR19980  
 UL E29179

**General**

Product Family Crimp Housings  
 Series 4306  
 Product Name HCS-125

**Physical**

Circuits (maximum) 2  
 Color - Resin Natural  
 Flammability 94V-2  
 Gender Dual  
 Glow-Wire Compliant No  
 Material - Resin Nylon  
 Number of Rows 1  
 Packaging Type Bag  
 Panel Mount No  
 Pitch - Mating Interface (in) 0.280 In  
 Pitch - Mating Interface (mm) 7.11 mm  
 Stackable No  
 Temperature Range - Operating -40°C to +105°C

**Electrical**

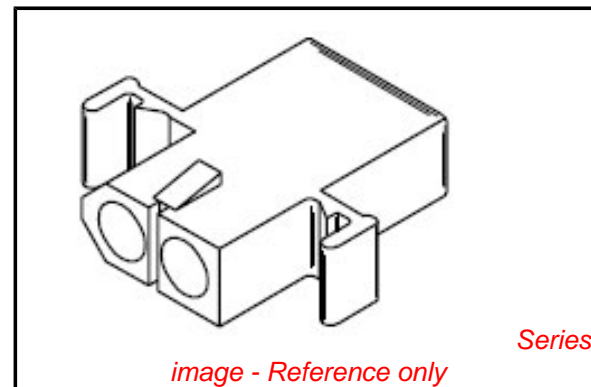
Current - Maximum per Contact 20A

**Material Info**

Old Part Number 4306P1

**Reference - Drawing Numbers**

Sales Drawing SD-4306-\*



**EU RoHS**

**ELV and RoHS Compliant**  
**REACH SVHC Contains SVHC: No**  
**Halogen-Free Status**  
**Not Reviewed**

**China RoHS**



**Need more information on product environmental compliance?**

Email [productcompliance@molex.com](mailto:productcompliance@molex.com)  
 For a multiple part number RoHS Certificate of Compliance, [click here](#)

Please visit the [Contact Us](#) section for any non-product compliance questions.

**Search Parts in this Series**

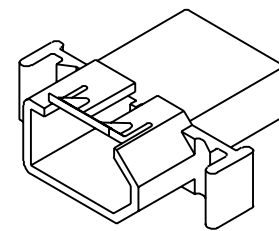
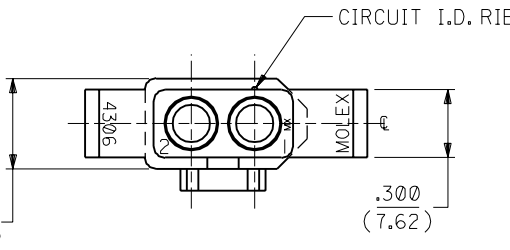
4306Series

**Mates With**

4306r

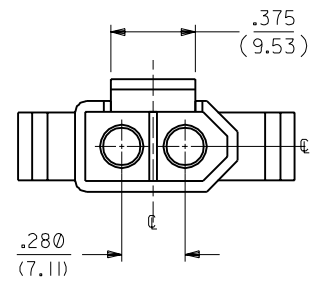
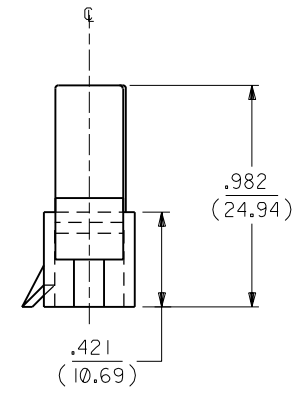
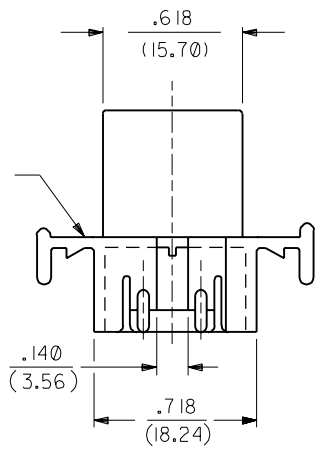
**Use With**

8947 , 1900 male crimp terminals, 1901 , 2046 , 2047 , 42546 , 42547 , 42554 , 42555 , 8946



4306-P PLUG HOUSING

MOUNTING EAR (2 PL.)  
SEE DETAIL 1 OR 2  
(WHEN SPECIFIED)

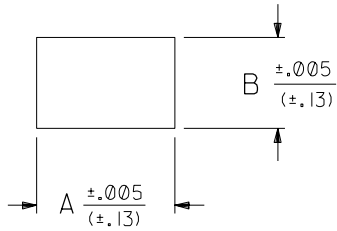
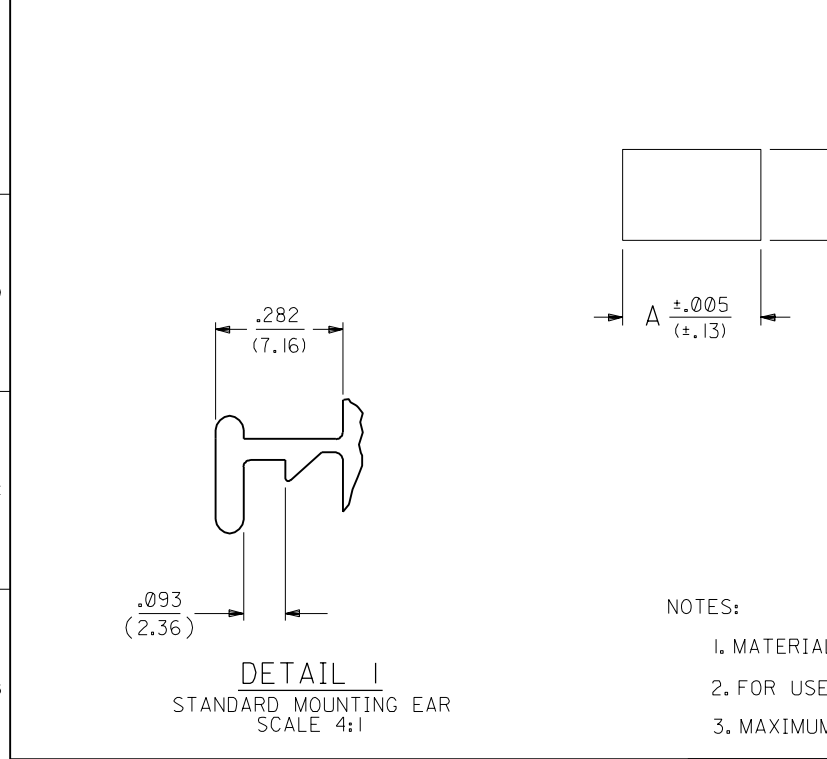


|      |     |      |      |  |
|------|-----|------|------|--|
| F    | 3   | F    | F    | ADD CKT. I.D. RIB.<br>PER ECR U3 1770<br>GC 12/9/93 RW |
| F    | 2   | F    | E    | REDRAWN PER<br>ECR 10/65<br>GEP 6/5/87 RW              |
| F    | 1   | F    |      |  |
| MFG. | SH. | REV. | LTR. | REVISIONS  |

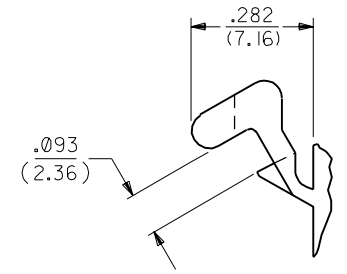
| DIMENSIONS SHOWN (METRIC) INCH   |             | $\nabla = 0$   | $\blacktriangledown = 0$ | REVISE ONLY ON CAD SYSTEM |  |             |       |         |                  |             |         |     |            |   |  |  |
|--|-------------|--|--------------------------|---------------------------|--|-------------|-------|---------|------------------|-------------|---------|-----|------------|---|--|--|
| UNLESS OTHERWISE SPECIFIED<br>TOLERANCES: ANGULAR $\pm 1/2^\circ$  |             | TITLE  |                          |                           |  |             |       |         |                  |             |         |     |            |   |  |  |
| <table border="1"> <thead> <tr> <th></th> <th>INCH</th> <th>METRIC</th> </tr> </thead> <tbody> <tr> <td>3 PLACE</td> <td><math>\pm .010</math></td> <td>---</td> </tr> <tr> <td>2 PLACE</td> <td><math>\pm .014</math></td> <td><math>\pm 0.25</math></td> </tr> <tr> <td>1 PLACE</td> <td>---</td> <td><math>\pm 0.36</math></td> </tr> </tbody> </table> |             |  | INCH                     | METRIC                    | 3 PLACE  | $\pm .010$  | ---   | 2 PLACE | $\pm .014$       | $\pm 0.25$  | 1 PLACE | --- | $\pm 0.36$ | HOUSING, 2 CIRCUIT<br>PLUG AND RECEPTACLE<br>$\frac{.125}{(3.18)}$ DIA. |  |  |
|  | INCH        | METRIC   |                          |                           |  |             |       |         |                  |             |         |     |            |   |  |  |
| 3 PLACE  | $\pm .010$  | ---  |                          |                           |  |             |       |         |                  |             |         |     |            |   |  |  |
| 2 PLACE  | $\pm .014$  | $\pm 0.25$   |                          |                           |  |             |       |         |                  |             |         |     |            |   |  |  |
| 1 PLACE  | ---         | $\pm 0.36$   |                          |                           |  |             |       |         |                  |             |         |     |            |   |  |  |
| DRAFT WHERE APPLICABLE MUST<br>REMAIN WITHIN DIMENSIONS  |             | <table border="1"> <tr> <td>MOLEX</td> <td>LISLE, ILL.</td> <td>60532</td> <td>U.S.A.</td> <td>SHEET NO. 1 of 3</td> <td>DATE 6/5/87</td> </tr> </table> |                          |                           | MOLEX  | LISLE, ILL. | 60532 | U.S.A.  | SHEET NO. 1 of 3 | DATE 6/5/87 |         |     |            |   |  |  |
| MOLEX  | LISLE, ILL. | 60532  | U.S.A.                   | SHEET NO. 1 of 3          | DATE 6/5/87  |             |       |         |                  |             |         |     |            |   |  |  |
| DRWG. BY GEP   |             | CHK'D. BY RW   |                          | PART NO. SEE CHART        | DRWG. NO. SD-4306-*  |             |       |         |                  |             |         |     |            |   |  |  |
| APP'D. BY RAS  |             | SCALE 2 : 1  |                          | FILE NAME SD4306X1.DGN    | THIS DRAWING CONTAINS INFORMATION THAT IS PROPRIETARY TO MOLEX INC. AND SHOULD NOT BE USED WITHOUT WRITTEN PERMISSION. |             |       |         |                  |             |         |     |            |   |  |  |
|  |             |  |                          | DIV. CP                   | SIZE B   |             |       |         |                  |             |         |     |            |   |  |  |

|            |          |                                    |   |   |   |   |   |   |   |      |
|------------|----------|------------------------------------|---|---|---|---|---|---|---|------|
| 10         | 9        | 8                                  | 7 | 6 | 5 | 4 | 3 | 2 | 1 | 4306 |
| PLUG       |          |                                    |   |   |   |   |   |   |   |      |
| PART NO.   | ENG. NO. | DESCRIPTION                        |   |   |   |   |   |   |   |      |
| 03-12-2021 | 4306-P   | PLUG WITH STANDARD EARS (DETAIL 1) |   |   |   |   |   |   |   |      |
| 03-12-2022 | 4306-P1  | PLUG W/O EARS                      |   |   |   |   |   |   |   |      |
| 03-12-2023 | 4306-PB  | PLUG W/PREBENT EARS (DETAIL 2)     |   |   |   |   |   |   |   |      |

|            |          |  |   |   |   |   |   |   |   |      |
|------------|----------|--|---|---|---|---|---|---|---|------|
| 10         | 9        | 8  | 7 | 6 | 5 | 4 | 3 | 2 | 1 | 4306 |
| RECEPTACLE |          |  |   |   |   |   |   |   |   |      |
| PART NO.   | ENG. NO. | DESCRIPTION                              |   |   |   |   |   |   |   |      |
| 03-12-1021 | 4306-R   | RECEPTACLE WITH STANDARD EARS (DETAIL 1) |   |   |   |   |   |   |   |      |
| 03-12-1022 | 4306-R1  | RECEPTACLE W/O EARS                      |   |   |   |   |   |   |   |      |
| 03-12-1023 | 4306-RB  | RECEPTACLE W/PREBENT EARS (DETAIL 2)     |   |   |   |   |   |   |   |      |



| MOUNTING PANEL OPENING |              |              |
|------------------------|--------------|--------------|
| HOUSING                | DIM. "A"     | DIM. "B"     |
| PLUG                   | .878/(22.30) | .432/(10.97) |
| RECEPTACLE             | .778/(19.76) | .375/(9.53)  |



DETAIL 2  
PREBENT MOUNTING EAR  
SCALE 4:1

- NOTES:
1. MATERIAL: NYLON TYPE 6/6, 94V-2, NATURAL.
  2. FOR USE WITH .125/(3.18) DIA. SERIES TERMINALS.
  3. MAXIMUM PANEL THICKNESS .090/(2.29).

|                |        |                |  | DIMENSIONS SHOWN (METRIC) INCH<br>UNLESS OTHERWISE SPECIFIED<br>TOLERANCES: ANGULAR ± 1/2°   |  | ▽ = 0    ▼ = 0    REVISE ONLY ON CAD SYSTEM   |  |        |         |        |     |         |        |        |         |     |        |  |  |
|----------------|--------|----------------|--|--|--|---|--|--------|---------|--------|-----|---------|--------|--------|---------|-----|--------|--|--|
|                |        |                |  | <table border="1"> <tr> <th colspan="2">INCH</th> <th>METRIC</th> </tr> <tr> <td>3 PLACE</td> <td>± .010</td> <td>---</td> </tr> <tr> <td>2 PLACE</td> <td>± .014</td> <td>± 0.25</td> </tr> <tr> <td>1 PLACE</td> <td>---</td> <td>± 0.35</td> </tr> </table> |  | INCH  |  | METRIC | 3 PLACE | ± .010 | --- | 2 PLACE | ± .014 | ± 0.25 | 1 PLACE | --- | ± 0.35 | TITLE<br>HOUSING, 2 CIRCUIT<br>PLUG AND RECEPTACLE<br>.125/(3.18) DIA. |  |
| INCH           |        | METRIC         |  |  |  |   |  |        |         |        |     |         |        |        |         |     |        |  |  |
| 3 PLACE        | ± .010 | ---            |  |  |  |   |  |        |         |        |     |         |        |        |         |     |        |  |  |
| 2 PLACE        | ± .014 | ± 0.25         |  |  |  |   |  |        |         |        |     |         |        |        |         |     |        |  |  |
| 1 PLACE        | ---    | ± 0.35         |  |  |  |   |  |        |         |        |     |         |        |        |         |     |        |  |  |
|                |        |                |  | DRAFT WHERE APPLICABLE MUST<br>REMAIN WITHIN DIMENSIONS  |  | PART NO. SHEET NO. DATE<br>L1SLE,ILL. 60532 U.S.A. 3 6/ 5/87  |  |        |         |        |     |         |        |        |         |     |        |  |  |
|                |        |                |  | DRWG. BY: GEP    CHK'D. BY: RW   |  | PART NO. DRWG. NO.<br><b>SEE CHART</b> <b>SD-4306-*</b>   |  |        |         |        |     |         |        |        |         |     |        |  |  |
|                |        |                |  | APP'D. BY: RAS    SCALE: 2 : 1   |  | FILE NAME: SD4306X3.DWG<br>THIS DRAWING CONTAINS INFORMATION THAT IS PROPRIETARY TO MOLEX INC. AND SHOULD NOT BE USED WITHOUT WRITTEN PERMISSION. |  |        |         |        |     |         |        |        |         |     |        |  |  |
| LTR. REVISIONS |        | LTR. REVISIONS |  | DIV. CP  |  | SIZE B  |  |        |         |        |     |         |        |        |         |     |        |  |  |

## Данный компонент на территории Российской Федерации

### Вы можете приобрести в компании MosChip.

Для оперативного оформления запроса Вам необходимо перейти по данной ссылке:

<http://moschip.ru/get-element>

Вы можете разместить у нас заказ для любого Вашего проекта, будь то серийное производство или разработка единичного прибора.

В нашем ассортименте представлены ведущие мировые производители активных и пассивных электронных компонентов.

Нашей специализацией является поставка электронной компонентной базы двойного назначения, продукции таких производителей как XILINX, Intel (ex.ALTERA), Vicor, Microchip, Texas Instruments, Analog Devices, Mini-Circuits, Amphenol, Glenair.

Сотрудничество с глобальными дистрибьюторами электронных компонентов, предоставляет возможность заказывать и получать с международных складов практически любой перечень компонентов в оптимальные для Вас сроки.

На всех этапах разработки и производства наши партнеры могут получить квалифицированную поддержку опытных инженеров.

Система менеджмента качества компании отвечает требованиям в соответствии с ГОСТ Р ИСО 9001, ГОСТ РВ 0015-002 и ЭС РД 009

### Офис по работе с юридическими лицами:

105318, г.Москва, ул.Щербаковская д.3, офис 1107, 1118, ДЦ «Щербаковский»

Телефон: +7 495 668-12-70 (многоканальный)

Факс: +7 495 668-12-70 (доб.304)

E-mail: [info@moschip.ru](mailto:info@moschip.ru)

Skype отдела продаж:

moschip.ru

moschip.ru\_4

moschip.ru\_6

moschip.ru\_9