

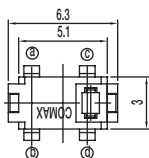


## Features/Benefits

- Compact design
- Low actuation force
- Detect mechanical movement
- Left and right options
- Right angle options

## Typical Applications

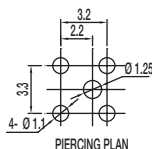
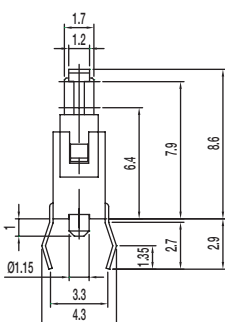
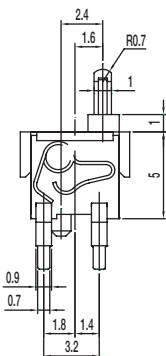
- Computer peripherals
- Office equipment
- Consumer electronics
- Appliances
- Audio and visual equipment



PART NUMBER	PACKAGING	SCHEMATIC
<b>DS-02005</b>	1,000 pieces	1P-1T

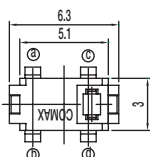
## Specifications

CONTACT ARRANGEMENT: SPST, NO  
 CONTACT RATING: 100mA @ 30 VDC  
 OPERATING LIFE: 50,000 cycles  
 OPERATING FORCE: 50 gf max.  
 PRE-TRAVEL: 0.7 mm  
 TOTAL TRAVEL: 2.6 mm  
 INITIAL CONTACT RESISTANCE: 1 Ω max.  
 INSULATION RESISTANCE: 100 M Ω min. @ 100 VDC 60 sec.  
 DIELECTRIC STRENGTH: 100 V AC (50-60Hz) 60 sec.  
 OPERATING TEMPERATURE: -40°C to +85°C.



## Materials

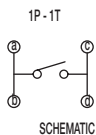
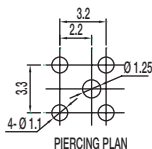
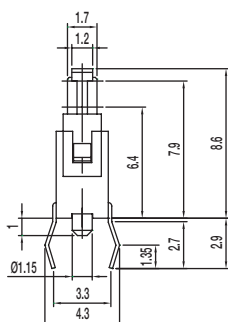
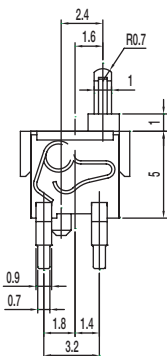
KNOB: PA  
 COVER: PA  
 SPRING: Gold plated, copper alloy  
 HOUSING: PA  
 TERMINAL: Silver plated, copper alloy



PART NUMBER	PACKAGING	SCHEMATIC
<b>DS-02005 (30)</b>	1,000 pieces	1P-1T

## Specifications

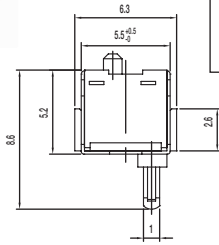
CONTACT ARRANGEMENT: SPST, NO  
 CONTACT RATING: 100mA @ 30 VDC  
 OPERATING LIFE: 50,000 cycles  
 OPERATING FORCE: 30 gf max.  
 PRE-TRAVEL: 0.7 mm  
 TOTAL TRAVEL: 2.2 mm  
 INITIAL CONTACT RESISTANCE: 1 Ω max.  
 INSULATION RESISTANCE: 100 M Ω min. @ 100 VDC 60 sec.  
 DIELECTRIC STRENGTH: 100 V AC (50-60Hz) 60 sec.  
 OPERATING TEMPERATURE: -40°C to +85°C.



## Materials

KNOB: PA  
 COVER: PA  
 SPRING: Gold plated, copper alloy  
 HOUSING: PA  
 TERMINAL: Silver plated, copper alloy

# DS Series Detect Switch



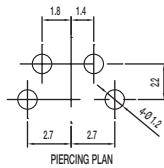
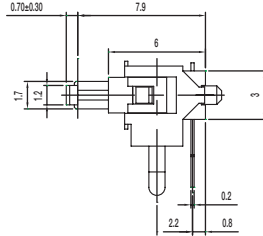
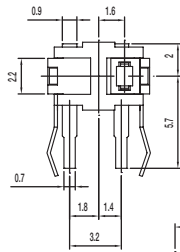
PART NUMBER	PACKAGING	SCHEMATIC
<b>DS-02005-A</b>	1,000 pieces	1P-1T  N.O.

## Specifications

CONTACT ARRANGEMENT: SPST, NO  
 CONTACT RATING: 100mA @ 30 VDC  
 OPERATING LIFE: 50,000 cycles  
 OPERATING FORCE: 50 gf max.  
 PRE-TRAVEL: 0.7 mm  
 TOTAL TRAVEL: 2.6 mm  
 INITIAL CONTACT RESISTANCE: 1 Ω max.  
 INSULATION RESISTANCE: 100 M Ω min. @ 100 VDC 60 sec.  
 DIELECTRIC STRENGTH: 100 V AC (50-60Hz) 60 sec.  
 OPERATING TEMPERATURE: -40°C to +85°C.

## Materials

KNOB: PA  
 COVER: PA  
 SPRING: Gold plated, copper alloy  
 HOUSING: PA  
 TERMINAL: Silver plated, copper alloy



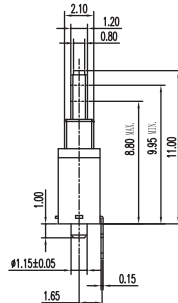
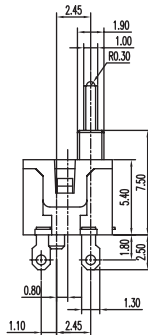
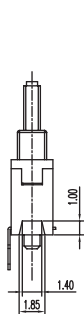
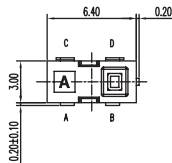
PART NUMBER	PACKAGING	SCHEMATIC
<b>DS-21805</b>	2,500 pieces	 N.O.

## Specifications

CONTACT ARRANGEMENT: SPDT  
 CONTACT RATING: 5mA @ 5 VDC  
 OPERATING LIFE: 100,000 cycles  
 OPERATING FORCE: 36 gf  
 TOTAL TRAVEL: 2.20 mm  
 INITIAL CONTACT RESISTANCE: 1 Ω max.  
 INSULATION RESISTANCE: 100 M Ω min. @ 100 VDC 60 sec.  
 DIELECTRIC STRENGTH: 100 V AC (50-60Hz) 60 sec.  
 OPERATING TEMPERATURE: -20°C to +70°C.

## Materials

KNOB: POM  
 COVER: PA46  
 SPRING: Silver plated  
 HOUSING: PPS  
 TERMINAL: Silver plated

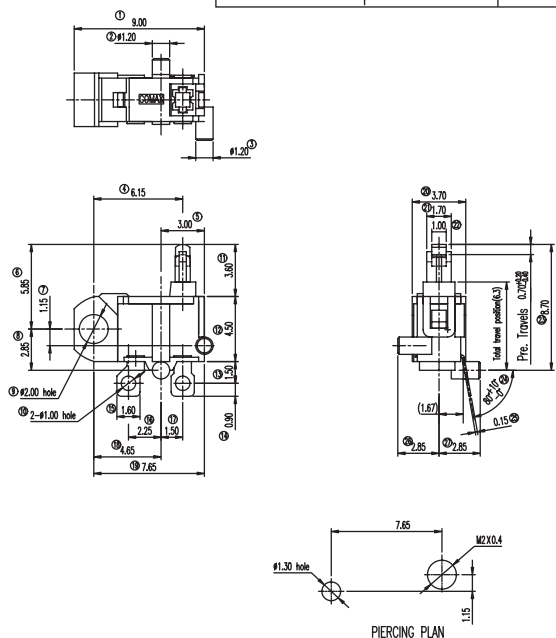


D

Detect



PART NUMBER	PACKAGING	SCHEMATIC
<b>DS-203-A</b>	2,500 pieces	 1P - 1T N.O.



## Specifications

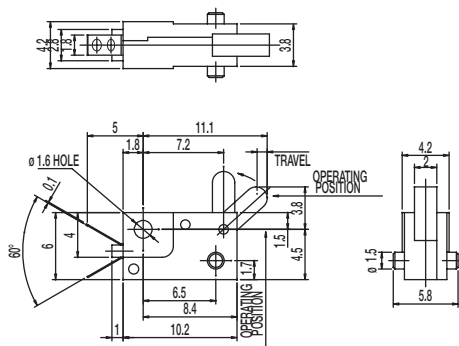
CONTACT ARRANGEMENT: SPST  
 CONTACT RATING: 100mA @ 30 VDC  
 OPERATING LIFE: 50,000 cycles  
 OPERATING FORCE: 36 gf  
 PRE TRAVEL: 0.70 +0.20/-0.40 mm  
 INITIAL CONTACT RESISTANCE: 1 Ω max.  
 INSULATION RESISTANCE: 50 M Ω min. @ 250 VDC 60 sec.  
 DIELECTRIC STRENGTH: 250 V AC (50-60Hz) 60 sec.  
 OPERATING TEMPERATURE: -20°C to +70°C.

## Materials

KNOB: POM  
 COVER: PA  
 SPRING: Gold plated  
 HOUSING: PA  
 TERMINAL: Silver plated



PART NUMBER	PACKAGING	SCHEMATIC
<b>DS-040-02</b>	1,000 pieces	 1P - 1T N.O.



## Specifications

CONTACT ARRANGEMENT: SPST, NO  
 CONTACT RATING: 0.1A @ 16 VDC  
 OPERATING LIFE: 20,000 cycles  
 OPERATING FORCE: 30 ± 15 gf  
 TRAVEL: 0.90 ± 0.20 mm  
 INITIAL CONTACT RESISTANCE: 40 m Ω max.  
 INSULATION RESISTANCE: 100 M Ω min. @ 250 VDC 60 sec.  
 DIELECTRIC STRENGTH: 250 V AC (50-60Hz) 60 sec.  
 OPERATING TEMPERATURE: -20°C to +70°C.

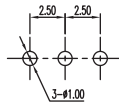
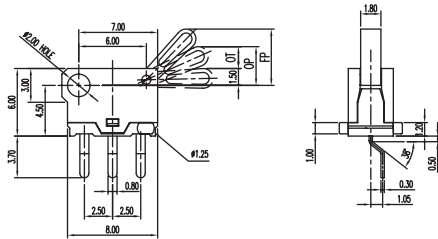
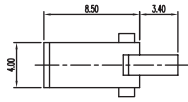
## Materials

LEVER: POM  
 CASE: PBT  
 COVER: PC

# DS Series Detect Switch



PART NUMBER	PACKAGING	SCHEMATIC
<b>DS-080</b>	1,000 pieces	



PIERCING PLAN

## Specifications

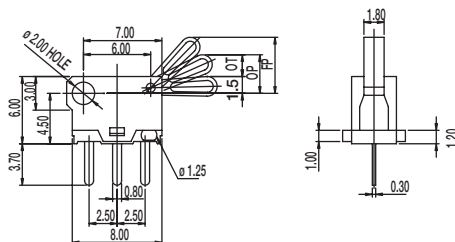
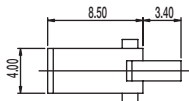
CONTACT ARRANGEMENT: SPDT  
 CONTACT RATING: 100mA @ 30 VDC  
 OPERATING LIFE: 20,000 cycles  
 OPERATING FORCE: 30 ± 20 gf  
 OVER TRAVEL: 2.0 ± 0.40 mm  
 INITIAL CONTACT RESISTANCE: 200 m Ω max.  
 INSULATION RESISTANCE: 10 M Ω min. @ 250 VDC 60 sec.  
 DIELECTRIC STRENGTH: 250 V AC (50-60Hz) 60 sec.  
 OPERATING TEMPERATURE: -20°C to +70°C.

## Materials

KNOB: POM  
 COVER: PA46  
 SLIDER: PBT  
 HOUSING: PA46  
 TERMINAL: Silver plated



PART NUMBER	PACKAGING	SCHEMATIC
<b>DS-080-C PA</b>	1,000 pieces	



PIERCING PLAN

## Specifications

CONTACT ARRANGEMENT: SPDT  
 CONTACT RATING: 100mA @ 30 VDC  
 OPERATING LIFE: 20,000 cycles  
 OPERATING FORCE: 30 ± 20 gf  
 OVER TRAVEL: 2.0 ± 0.40 mm  
 INITIAL CONTACT RESISTANCE: 200 m Ω max.  
 INSULATION RESISTANCE: 10 M Ω min. @ 250 VDC 60 sec.  
 DIELECTRIC STRENGTH: 250 V AC (50-60Hz) 60 sec.  
 OPERATING TEMPERATURE: -20°C to +70°C.

## Materials

KNOB: POM  
 COVER: PA46  
 SLIDER: PBT  
 HOUSING: PA46  
 TERMINAL: Silver plated

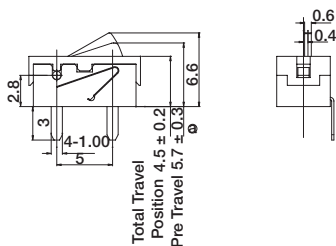
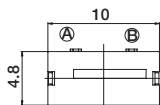


D

Detect



PART NUMBER	PACKAGING	SCHEMATIC
<b>DS-09005-02 BK</b>	500 pieces	 N.O.



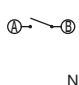
## Specifications

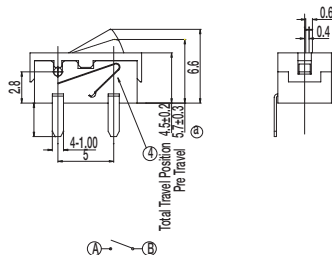
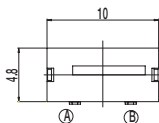
CONTACT ARRANGEMENT: SPST  
 CONTACT RATING: 1mA @ 5 VDC  
 OPERATING LIFE: 100,000 cycles  
 OPERATING FORCE: 50 gf max.  
 TOTAL TRAVEL: 4.5±0.2 mm  
 INITIAL CONTACT RESISTANCE: 500 m Ω max.  
 INSULATION RESISTANCE: 100 M Ω min. @ 500 VDC 60 sec.  
 DIELECTRIC STRENGTH: 500 V AC (50-60Hz) 60 sec.  
 OPERATING TEMPERATURE: -20°C to +70°C.

## Materials

LEVER: POM  
 COVER: PA  
 HOUSING: PA  
 TERMINAL: Silver plated



PART NUMBER	PACKAGING	SCHEMATIC
<b>DS-09005-02 RP</b>	500 pieces	 N.O.



## Specifications

CONTACT ARRANGEMENT: SPST  
 CONTACT RATING: 1mA @ 5 VDC  
 OPERATING LIFE: 100,000 cycles  
 OPERATING FORCE: 50 gf max.  
 TOTAL TRAVEL: 4.5±0.2 mm  
 INITIAL CONTACT RESISTANCE: 500 m Ω max.  
 INSULATION RESISTANCE: 100 M Ω min. @ 500 VDC 60 sec.  
 DIELECTRIC STRENGTH: 500 V AC (50-60Hz) 60 sec.  
 OPERATING TEMPERATURE: -20°C to +70°C.

## Materials

LEVER: POM  
 COVER: PA  
 HOUSING: PA  
 TERMINAL: Silver plated



Detect

## Данный компонент на территории Российской Федерации

### Вы можете приобрести в компании MosChip.

Для оперативного оформления запроса Вам необходимо перейти по данной ссылке:

<http://moschip.ru/get-element>

Вы можете разместить у нас заказ для любого Вашего проекта, будь то серийное производство или разработка единичного прибора.

В нашем ассортименте представлены ведущие мировые производители активных и пассивных электронных компонентов.

Нашей специализацией является поставка электронной компонентной базы двойного назначения, продукции таких производителей как XILINX, Intel (ex.ALTERA), Vicor, Microchip, Texas Instruments, Analog Devices, Mini-Circuits, Amphenol, Glenair.

Сотрудничество с глобальными дистрибьюторами электронных компонентов, предоставляет возможность заказывать и получать с международных складов практически любой перечень компонентов в оптимальные для Вас сроки.

На всех этапах разработки и производства наши партнеры могут получить квалифицированную поддержку опытных инженеров.

Система менеджмента качества компании отвечает требованиям в соответствии с ГОСТ Р ИСО 9001, ГОСТ РВ 0015-002 и ЭС РД 009

### Офис по работе с юридическими лицами:

105318, г.Москва, ул.Щербаковская д.3, офис 1107, 1118, ДЦ «Щербаковский»

Телефон: +7 495 668-12-70 (многоканальный)

Факс: +7 495 668-12-70 (доб.304)

E-mail: [info@moschip.ru](mailto:info@moschip.ru)

Skype отдела продаж:

moschip.ru

moschip.ru\_4

moschip.ru\_6

moschip.ru\_9