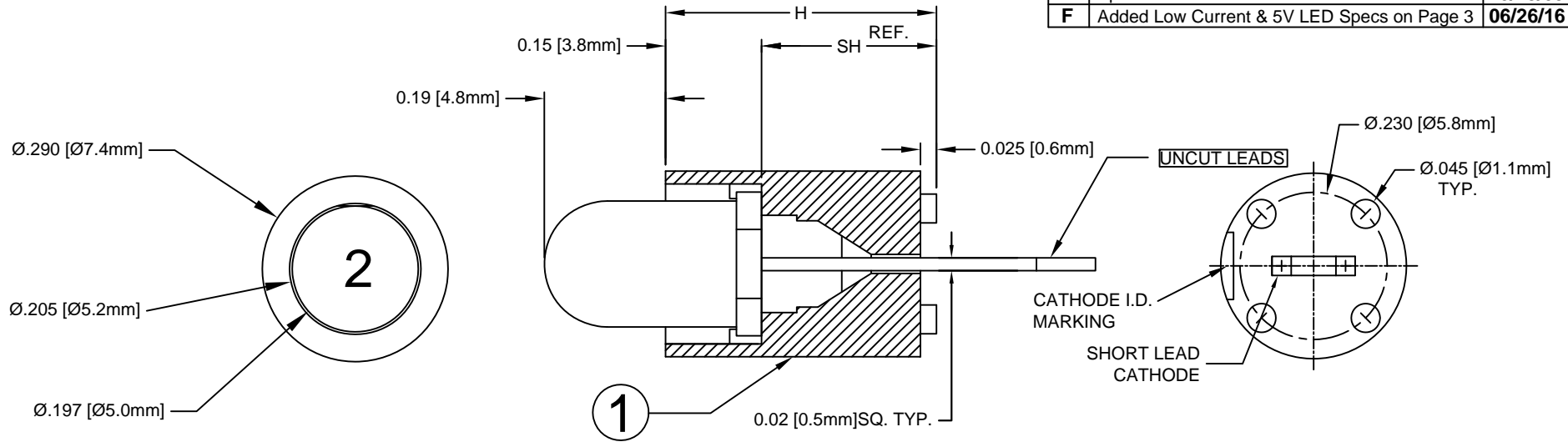


| ITEM | QTY | PART NUMBER | PART DESCRIPTION                         |
|------|-----|-------------|--|
| 1    | 1   | SLM-XXX     | Molded Self-Retaining LED Mount          |
| 2    | 1   | 5XX-F       | T1 3/4 (5mm) Flanged LED, See Page 2 & 3 |

| REV. | DESCRIPTION                                | DATE     | APPROVED |
|------|--|----------|----------|
| B    | Updated Uncut Leads                        | 06/06/08 | M. C.    |
| C    | Updated Uncut Leads Note                   | 12/24/08 | T. Y.    |
| D    | Updated P/N's on Page 2                    | 09/16/09 | T. Y.    |
| E    | Updated LED Protrusion                     | 10/19/09 | T. Y.    |
| F    | Added Low Current & 5V LED Specs on Page 3 | 06/26/16 | J. C.    |



| PART NO. | SH ( Ref.)   | H             |
|----------|--------------|---------------|
| SLM-140  | .140 (3.6mm) | .285 (7.1mm)  |
| SLM-150  | .150 (3.8mm) | .295 (7.2mm)  |
| SLM-160  | .160 (4.1mm) | .305 (7.7mm)  |
| SLM-170  | .170 (4.3mm) | .315 (8.0mm)  |
| SLM-180  | .180 (4.6mm) | .325 (8.3mm)  |
| SLM-190  | .190 (4.8mm) | .335 (8.5mm)  |
| SLM-200  | .200 (5.1mm) | .345 (8.8mm)  |
| SLM-210  | .210 (5.3mm) | .355 (9.0mm)  |
| SLM-220  | .220 (5.6mm) | .365 (9.3mm)  |
| SLM-230  | .230 (5.8mm) | .375 (9.5mm)  |
| SLM-240  | .240 (6.1mm) | .385 (9.8mm)  |
| SLM-250  | .250 (6.4mm) | .395 (10.0mm) |
| SLM-260  | .260 (6.6mm) | .405 (10.3mm) |
| SLM-270  | .270 (6.9mm) | .415 (10.5mm) |

| PART NO. | SH ( Ref.)    | H             |
|----------|---------------|---------------|
| SLM-280  | .280 (7.1mm)  | .425 (10.8mm) |
| SLM-290  | .290 (7.4mm)  | .435 (11.0mm) |
| SLM-300  | .300 (7.6mm)  | .445 (11.3mm) |
| SLM-310  | .310 (7.9mm)  | .455 (11.6mm) |
| SLM-320  | .320 (8.1mm)  | .465 (11.8mm) |
| SLM-330  | .330 (8.4mm)  | .475 (12.1mm) |
| SLM-340  | .340 (8.6mm)  | .485 (12.3mm) |
| SLM-350  | .350 (8.9mm)  | .495 (12.6mm) |
| SLM-360  | .360 (9.1mm)  | .505 (12.8mm) |
| SLM-370  | .370 (9.4mm)  | .515 (13.1mm) |
| SLM-380  | .380 (9.7mm)  | .525 (13.3mm) |
| SLM-390  | .390 (9.9mm)  | .535 (13.6mm) |
| SLM-400  | .400 (10.2mm) | .545 (13.8mm) |
| SLM-410  | .410 (10.4mm) | .555 (14.1mm) |

| PART NO. | SH ( Ref.)    | H             |
|----------|---------------|---------------|
| SLM-420  | .420 (10.7mm) | .565 (14.3mm) |
| SLM-430  | .430 (10.9mm) | .575 (14.6mm) |
| SLM-440  | .440 (11.2mm) | .585 (14.9mm) |
| SLM-450  | .450 (11.4mm) | .595 (15.1mm) |
| SLM-470  | .470 (11.9mm) | .615 (15.6mm) |
| SLM-490  | .490 (12.4mm) | .635 (16.1mm) |
| SLM-510  | .510 (13.0mm) | .655 (16.6mm) |
| SLM-530  | .530 (13.5mm) | .675 (17.1mm) |
| SLM-550  | .550 (13.8mm) | .695 (17.5mm) |
| SLM-570  | .570 (14.5mm) | .715 (18.2mm) |
| SLM-590  | .590 (15.0mm) | .735 (18.6mm) |
| SLM-610  | .610 (15.5mm) | .755 (19.2mm) |
| SLM-630  | .630 (16.0mm) | .775 (19.7mm) |
| SLM-650  | .650 (16.5mm) | .795 (20.2mm) |

| PART NO. | SH ( Ref.)    | H              |
|----------|---------------|----------------|
| SLM-670  | .670 (17.0mm) | .815 (20.7mm)  |
| SLM-690  | .690 (17.5mm) | .835 (21.2mm)  |
| SLM-710  | .710 (18.0mm) | .855 (21.7mm)  |
| SLM-730  | .730 (18.5mm) | .875 (22.2mm)  |
| SLM-750  | .750 (19.1mm) | .895 (22.7mm)  |
| SLM-770  | .770 (19.6mm) | .915 (23.2mm)  |
| SLM-790  | .790 (20.1mm) | .935 (23.7mm)  |
| SLM-810  | .810 (20.6mm) | .955 (24.3mm)  |
| SLM-830  | .830 (21.1mm) | .975 (24.8mm)  |
| SLM-850  | .850 (21.6mm) | .995 (25.3mm)  |
| SLM-870  | .870 (22.1mm) | 1.015 (25.8mm) |
| SLM-890  | .890 (22.6mm) | 1.035 (26.3mm) |

## ABSOLUTE MAXIMUM RATINGS (Ta = 25°C)

|  |       |                     |
|--|-------|---------------------|
| REVERSE VOLTAGE                              | _____ | 5V                  |
| REVERSE CURRENT ( VR=5V)                     | _____ | 100µA               |
| OPERATING TEMPERATURE RANGE                  | _____ | -25°C ~ 85°C        |
| STORAGE TEMPERATURE                          | _____ | -30°C ~ 100°C       |
| LEAD SOLDERING TEMPERATURE (1/16" FROM BODY) | _____ | 260°C for 5 Seconds |

| STANDARD TOLERANCE<br>( UNLESS OTHERWISE SPECIFIED ) |                          |
|--|--------------------------|
| DECIMALS   | ANGULAR                  |
| .X ± .1  | X° ± 1°                  |
| .XX ± .02  |                          |
| .XXX ± .010  |                          |
| DESIGNED:<br><b>D. Beckman</b>                       | DATE:<br><b>06/14/07</b> |
| CHECKED:<br><b>T. Yin</b>                            | DATE:<br><b>06/14/07</b> |

**BIVAR**<sup>®</sup>

4 THOMAS, IRVINE, CA. 92618  
TEL: (949) 951-8808 FAX: (949) 951-3974

TITLE: MOLDED, SELF-RETAINING  
T-1 3/4 (5mm) LED MOUNT ASSEMBLY


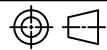
PART NO: SLMXXX5XXX REVISION: F

CAGE CODE : 32559 SHEET # 1 OF 3

CAD GENERATED DOCUMENT. DO NOT MEASURE DRAWING.

|      |              |      |          |
|------|--------------|------|----------|
| REV. | DESCRIPTION  | DATE | APPROVED |
|      | SEE SHEET #1 |      |          |

| Assy Part No.   | Chip      |                            |               | Lens Appearance | Electro-Optical Data |     |          | Viewing Angle<br>2 θ ½<br>(Deg) | LED Part No. |
|-----------------|-----------|----------------------------|---------------|-----------------|----------------------|-----|----------|---------------------------------|--------------|
|                 | Material  | Peak Wave Length<br>λp(nm) | Emitted Color |                 | Vf (V)               |     | Iv (mcd) |                                 |              |
|                 |           |                            |               |                 | TYP                  | MAX | TYP      |                                 |              |
| <b>STANDARD</b> |           |                            |               |                 | <b>Data @ 20mA</b>   |     |          |                                 |              |
| SLMXXX5BWC      | GaN/SiC   | 430                        | BLUE          | WATER CLEAR     | 4.0                  | 4.5 | 30       | 25                              | 5BWC-F       |
| SLMXXX5BWD      | GaN/SiC   | 430                        | BLUE          | DIFFUSED        | 4.0                  | 4.5 | 15       | 40                              | 5BWD-F       |
| SLMXXX5BWT      | GaN/SiC   | 430                        | BLUE          | TINTED          | 4.0                  | 4.5 | 30       | 25                              | 5BWT-F       |
| SLMXXX5PGC      | GaP/GaP   | 555                        | PURE GREEN    | WATER CLEAR     | 2.2                  | 2.8 | 10       | 35                              | 5PGC-F       |
| SLMXXX5PGD      | GaP/GaP   | 555                        | PURE GREEN    | DIFFUSED        | 2.2                  | 2.8 | 10       | 40                              | 5PGD-F       |
| SLMXXX5PGT      | GaP/GaP   | 555                        | PURE GREEN    | TINTED          | 2.2                  | 2.8 | 10       | 35                              | 5PGT-F       |
| SLMXXX5GC       | GaP/GaP   | 568                        | GREEN         | WATER CLEAR     | 2.1                  | 2.8 | 40       | 35                              | 5GC-F        |
| SLMXXX5GD       | GaP/GaP   | 568                        | GREEN         | DIFFUSED        | 2.1                  | 2.8 | 25       | 40                              | 5GD-F        |
| SLMXXX5GT       | GaP/GaP   | 568                        | GREEN         | TINTED          | 2.1                  | 2.8 | 40       | 35                              | 5GT-F        |
| SLMXXX5YC       | GaAsP/GaP | 590                        | YELLOW        | WATER CLEAR     | 2.0                  | 2.8 | 40       | 35                              | 5YC-F        |
| SLMXXX5YD       | GaAsP/GaP | 590                        | YELLOW        | DIFFUSED        | 2.0                  | 2.8 | 25       | 40                              | 5YD-F        |
| SLMXXX5YT       | GaAsP/GaP | 590                        | YELLOW        | TINTED          | 2.0                  | 2.8 | 40       | 35                              | 5YT-F        |
| SLMXXX5HC       | GaAsP/GaP | 625                        | HE RED        | WATER CLEAR     | 2.0                  | 2.8 | 50       | 35                              | 5HC-F        |
| SLMXXX5HD       | GaAsP/GaP | 625                        | HE RED        | DIFFUSED        | 2.0                  | 2.8 | 40       | 40                              | 5HD-F        |
| SLMXXX5HT       | GaAsP/GaP | 625                        | HE RED        | TINTED          | 2.0                  | 2.8 | 50       | 35                              | 5HT-F        |
| SLMXXX5RC       | GaP/GaP   | 700                        | RED           | WATER CLEAR     | 2.1                  | 2.8 | 2        | 35                              | 5RC-F        |
| SLMXXX5RD       | GaP/GaP   | 700                        | RED           | DIFFUSED        | 2.1                  | 2.8 | 1.5      | 40                              | 5RD-F        |
| SLMXXX5RT       | GaP/GaP   | 700                        | RED           | TINTED          | 2.1                  | 2.8 | 2        | 35                              | 5RT-F        |

|   |                          |  |                       |
|---|--------------------------|--|-----------------------|
| STANDARD TOLERANCE<br>(UNLESS OTHERWISE SPECIFIED)<br>±10% ALL VALUES    ANGULAR      |                          | <br>4 THOMAS, IRVINE, CA. 92618<br>TEL: (949) 951-8808    FAX: (949) 951-3974 |                       |
|  |                          |  |                       |
| DESIGNED:<br><b>D. Beckman</b>  | DATE:<br><b>06/14/07</b> | <b>TITLE:</b> MOLDED, SELF-RETAINING<br>T-1 3/4 (5mm) LED MOUNT ASSEMBLY   |                       |
| CHECKED:<br><b>T. Yin</b>   | DATE:<br><b>06/14/07</b> | <b>PART NO:</b><br>SLMXXX5XXX  | <b>REVISION:</b><br>F |
|   |                          | <b>CAGE CODE :</b> 32559   | <b>SHEET # 2 OF 3</b> |
| CAD GENERATED DOCUMENT. DO NOT MEASURE DRAWING.                                       |                          |  |                       |

|      |              |      |          |
|------|--------------|------|----------|
| REV. | DESCRIPTION  | DATE | APPROVED |
|      | SEE SHEET #1 |      |          |

| Assy Part No.      | Chip        |                                      |               | Lens Appearance | Electro-Optical Data |     |          | Viewing Angle<br>2 $\theta$ $\frac{1}{2}$<br>(Deg) | LED Part No. |
|--------------------|-------------|--------------------------------------|---------------|-----------------|----------------------|-----|----------|--|--------------|
|                    | Material    | Peak Wave Length<br>$\lambda_p$ (nm) | Emitted Color |                 | Vf (V)               |     | Iv (mcd) |  |              |
|                    |             |                                      |               |                 | TYP                  | MAX | TYP      |  |              |
| <b>LOW CURRENT</b> |             |                                      |               |                 | <b>Data @ 2mA</b>    |     |          |  |              |
| SLMXXX5BWDL        | GaN/SiC     | 430                                  | BLUE          | DIFFUSED        | 3.8                  | 4.2 | 4        | 40   | 5BWDL-F      |
| SLMXXX5GDL         | GaP/GaP     | 568                                  | GREEN         | DIFFUSED        | 2.1                  | 2.6 | 4        | 40   | 5GDL-F       |
| SLMXXX5YDL         | GaAsP/GaP   | 590                                  | YELLOW        | DIFFUSED        | 2.0                  | 2.6 | 4        | 40   | 5YDL-F       |
| SLMXXX5ADL         | GaAsP/GaP   | 605                                  | AMBER         | DIFFUSED        | 2.0                  | 2.6 | 4        | 40   | 5ADL-F       |
| SLMXXX5HDL         | GaAsP/GaP   | 625                                  | HE RED        | DIFFUSED        | 2.0                  | 2.6 | 5        | 40   | 5HDL-F       |
| SLMXXX5SRDL        | GaAlAs/GaAs | 645                                  | RED           | DIFFUSED        | 1.7                  | 2.3 | 6        | 40   | 5SRDL-F      |

| Assy Part No. | Chip      |                                      |               | Lens Appearance | Electro-Optical Data |     |          | Viewing Angle<br>2 $\theta$ $\frac{1}{2}$<br>(Deg) | LED Part No. |
|---------------|-----------|--------------------------------------|---------------|-----------------|----------------------|-----|----------|--|--------------|
|               | Material  | Peak Wave Length<br>$\lambda_p$ (nm) | Emitted Color |                 | Vf (V)               |     | Iv (mcd) |  |              |
|               |           |                                      |               |                 | TYP                  | MAX | TYP      |  |              |
| <b>5 VOLT</b> |           |                                      |               |                 | <b>Data @ 5V</b>     |     |          |  |              |
| SLMXXX5BWD5V  | GaN/SiC   | 430                                  | BLUE          | DIFFUSED        | -                    | 5.0 | 15       | 40   | 5BWD5V-F     |
| SLMXXX5GD5V   | GaP/GaP   | 568                                  | GREEN         | DIFFUSED        | -                    | 5.0 | 25       | 40   | 5GD5V-F      |
| SLMXXX5YD5V   | GaAsP/GaP | 590                                  | YELLOW        | DIFFUSED        | -                    | 5.0 | 25       | 40   | 5YD5V-F      |
| SLMXXX5AD5V   | GaAsP/GaP | 605                                  | AMBER         | DIFFUSED        | -                    | 5.0 | 25       | 40   | 5AD5V-F      |
| SLMXXX5HD5V   | GaAsP/GaP | 625                                  | HE RED        | DIFFUSED        | -                    | 5.0 | 30       | 40   | 5HD5V-F      |
| SLMXXX5RD5V   | GaP/GaP   | 700                                  | RED           | DIFFUSED        | -                    | 5.0 | 1.5      | 40   | 5RD5V-F      |

|   |                          |  |                       |
|---|--------------------------|--|-----------------------|
| STANDARD TOLERANCE<br>(UNLESS OTHERWISE SPECIFIED)<br>$\pm$ 10% ALL VALUES    ANGULAR |                          | <br>4 THOMAS, IRVINE, CA. 92618<br>TEL: (949) 951-8808    FAX: (949) 951-3974 |                       |
|  |                          |  |                       |
| DESIGNED:<br><b>D. Beckman</b>  | DATE:<br><b>06/14/07</b> | <b>PART NO:</b><br>SLMXXX5XXX  |                       |
| CHECKED:<br><b>T. Yin</b>   | DATE:<br><b>06/14/07</b> | <b>CAGE CODE :</b> 32559   | <b>SHEET #</b> 3 OF 3 |
| CAD GENERATED DOCUMENT. DO NOT MEASURE DRAWING.                                       |                          |  |                       |

## Данный компонент на территории Российской Федерации

### Вы можете приобрести в компании MosChip.

Для оперативного оформления запроса Вам необходимо перейти по данной ссылке:

<http://moschip.ru/get-element>

Вы можете разместить у нас заказ для любого Вашего проекта, будь то серийное производство или разработка единичного прибора.

В нашем ассортименте представлены ведущие мировые производители активных и пассивных электронных компонентов.

Нашей специализацией является поставка электронной компонентной базы двойного назначения, продукции таких производителей как XILINX, Intel (ex.ALTERA), Vicor, Microchip, Texas Instruments, Analog Devices, Mini-Circuits, Amphenol, Glenair.

Сотрудничество с глобальными дистрибьюторами электронных компонентов, предоставляет возможность заказывать и получать с международных складов практически любой перечень компонентов в оптимальные для Вас сроки.

На всех этапах разработки и производства наши партнеры могут получить квалифицированную поддержку опытных инженеров.

Система менеджмента качества компании отвечает требованиям в соответствии с ГОСТ Р ИСО 9001, ГОСТ РВ 0015-002 и ЭС РД 009

### Офис по работе с юридическими лицами:

105318, г.Москва, ул.Щербаковская д.3, офис 1107, 1118, ДЦ «Щербаковский»

Телефон: +7 495 668-12-70 (многоканальный)

Факс: +7 495 668-12-70 (доб.304)

E-mail: [info@moschip.ru](mailto:info@moschip.ru)

Skype отдела продаж:

moschip.ru

moschip.ru\_4

moschip.ru\_6

moschip.ru\_9