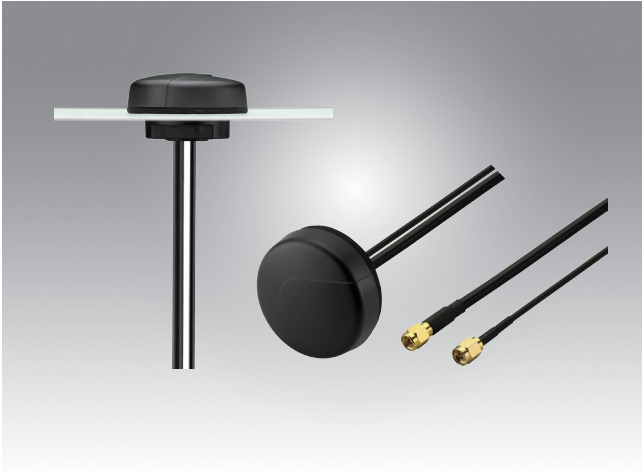


# TREK-ANT Series

## Heavy duty screw mount



### Features

- Heavy duty screw mount
- IP67 compliance

## Introduction

TREK-Ant-50X is a 2-in-1 GPS/GLONASS & Cellular combination antenna. It is an extremely low profile combination high performance GPS/GLONASS and pentad-band cellular antenna solution for professional telematics applications. At only 22 mm height, it is the lowest profile antenna in the market, with a diameter of 55 mm. It is designed to be mounted and couple to the metal structures it attaches to radiate. Durable UV ABS housing, thread and nut is resistant to vandalism and direct attack. The IP67 waterproof robust plastic body makes it extremely light, economical for shipping and minimum weight impact on vehicles. This also makes it ideal for use in humid environments such as water pits or marine applications as there are no external metal parts to corrode. The closed cell foam with double-sided adhesive provides a permanent waterproof seal and can adjust to different curvatures, stopping water from leaking under the antenna into the mounting hole.

## Specifications

Mechanical	Dimensions	Height 30±2 mm x Diameter 55±2mm
	Cable length	5000±30mm
	Casing	ABS
	Connector	RP SMA Male
Environmental	Temperature Range	-40°C to 85°C ±5°C
	Waterproof	IP-67
	Thermal Shock	100 cycles -40°C to +80°C
	Shock (drop test)	1m drop on concrete 6 axes
	Humidity	Non-condensing 65°C 95% RH

## Ordering Information

Item	Specification
TREK-ANT-502-GH5E	Antenna 2in1GPS/GLONASS & Cellular RP SMA(M)5M

# TREK-ANT Series

## Heavy duty screw mount



### Features

- Heavy duty screw mount
- IP67 Waterproof
- Heavy Duty – Integrated Metal Base/ Ground-plane

## Introduction

TREK-ANT-20X is a heavy-duty antenna, fully IP67 waterproof external M2M antenna for use in telematics, transportation and remote monitoring applications.

The Spartan is unique in the market because it combines a 3in1 GPS/GLONASS, Cellular (2G and 3G) and Wi-Fi, heavy-duty antenna with high efficiency in a compact format. The antenna screws down permanently onto a roof or metal panel and can be pole or wall-mounted with a metal bracket. For industries such as commercial vehicle telematics, remote monitoring, smart meter systems and construction equipment, the spartan provides a robust, rugged antenna that is durable, even in extreme environments. All while still maintaining 20dB isolation between antennas. It uses high-shielded PTFE dielectric ultra-low-loss cables that maintain lowattenuation at all frequency bands, with an average 0.3dB per meter (0.1dB per foot), compared to 0.7dB for RG58 and 1.2dB for RG174. Because of this, the Spartan maximizes chances of passing PTCRB and network approvals first time. The Spartan also has excellent GPS/GLONASS reception without need to attach to an external ground-plane due to coupling to its unique own metal base.

## Specifications

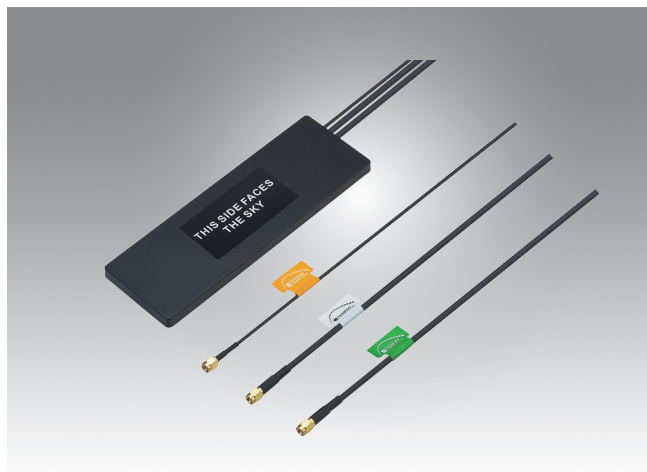
Mechanical	Dimensions	Height 65.35mm±2mm x Diameter 145.6mm±2mm
	Cable Length	5000±30mm
	Casing	PC/ABS Alloy
	Connector	RP SMA Male
Environmental	Temperature	-40°C to 85°C ± 5°C
	Waterproof	IP67
	Thermal Shock	100 cycles -40°C to +80°C ± 5°C
	Shock (drop test)	1m drop on concrete 6 axes
	Humidity	Non-condensing 65°C to 95% RH

## Ordering Information

Item	Specification
TREK-ANT-501-GWH5E	Antenna 3IN1 GSM GPRS/WIFI RP SMA(M) 5M

# TREK-ANT Series

## Adhesive Foam



### Features

- AdhesiveFoam
- IP67 Antenna
- Heavy-Duty- Integrated Metal Base/ Ground-plane

## Introduction

TREK-ANT-20X is a 3 in 1 GPS-GLONASS, LTE Cellular 2G/3G/4G and Wi-Fi 2.4/5GHz antenna is a low profile, heavy-duty, fully IP67 waterproof external M2M antenna for use by RF professionals in telematics, transportation and remote monitoring applications. The Stream 3in1 is unique in the market as it combines the highest possible efficiency and peak gain for GPS-GLONASS, Wi-Fi dual-band 2.4/5GHz and all cellular bands in 2G/3G/4G in a low profile compact format for mounting via high quality first tier automotive approved 3M adhesive foam.

## Specifications

Mechanical	Dimensions	Long 196.57mm*Width 62.57mm*High 1.25mm
	Cable length	3000±30mm
	Casing	ABS
	Connector	RP SMA Male
Environmental	Temperature Range	-40°C to 85°C ±5°C
	Waterproof	IP-67
	Thermal Shock	100 cycles -40°C to +80°C ± 5°C
	Shock (drop test)	1m drop on concrete 6 axes
	Humidity	Non-condensing 20% to 95% RH

## Ordering Information

Item	Specification
TREK-ANT-201-GWL3E	Antenna3in1GPS-GLONASS/LTE/Wi-Fi RP SMA(M)3M

## Данный компонент на территории Российской Федерации

### Вы можете приобрести в компании MosChip.

Для оперативного оформления запроса Вам необходимо перейти по данной ссылке:

<http://moschip.ru/get-element>

Вы можете разместить у нас заказ для любого Вашего проекта, будь то серийное производство или разработка единичного прибора.

В нашем ассортименте представлены ведущие мировые производители активных и пассивных электронных компонентов.

Нашей специализацией является поставка электронной компонентной базы двойного назначения, продукции таких производителей как XILINX, Intel (ex.ALTERA), Vicor, Microchip, Texas Instruments, Analog Devices, Mini-Circuits, Amphenol, Glenair.

Сотрудничество с глобальными дистрибьюторами электронных компонентов, предоставляет возможность заказывать и получать с международных складов практически любой перечень компонентов в оптимальные для Вас сроки.

На всех этапах разработки и производства наши партнеры могут получить квалифицированную поддержку опытных инженеров.

Система менеджмента качества компании отвечает требованиям в соответствии с ГОСТ Р ИСО 9001, ГОСТ РВ 0015-002 и ЭС РД 009

### Офис по работе с юридическими лицами:

105318, г.Москва, ул.Щербаковская д.3, офис 1107, 1118, ДЦ «Щербаковский»

Телефон: +7 495 668-12-70 (многоканальный)

Факс: +7 495 668-12-70 (доб.304)

E-mail: [info@moschip.ru](mailto:info@moschip.ru)

Skype отдела продаж:

moschip.ru

moschip.ru\_4

moschip.ru\_6

moschip.ru\_9