



7 mm Tunable RF Coils – 146, 150 Series



Coilcraft tunable coils provide the compactness of a 7 mm coil and the low drift reliability of an insert molded coil.

Standard inductance values range from less than 0.05 μH to over 0.5 μH . 150 Series coils with a tap are also available to meet specific requirements.

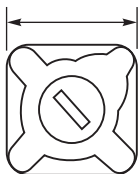
The windings of these economical coils are precision molded into a single piece of polypropylene for mechanical and electrical stability. Optional plated brass shield cans with solderable tabs provide integral shielding and additional mounting stability.

These parts can be ordered without cores for use as fixed inductors.

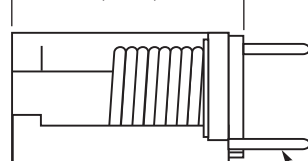
Coilcraft **Designer's Kit M302** contains samples of all standard 7 mm and 10 mm tunable inductors. To order, contact Coilcraft or visit <http://order.coilcraft.com>.

Unshielded Styles

0.268 ± 0.005 square
 $6.81 \text{ mm} \pm 0.13$



0.450 ± 0.020
 11.43 ± 0.51



0.138 ± 0.040
 3.5 ± 1.02

0.020 ± 0.002 dia
 0.51 ± 0.05



Weight: 146 series Unshielded 0.44 – 0.70 g With shield can 0.91 – 1.12 g
150 series 0.45 – 0.61 g 0.88 – 1.08 g

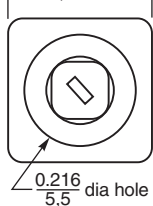
0.177 ± 0.005
 4.5 ± 0.13

0.177 ± 0.005
 4.5 ± 0.13

Finish

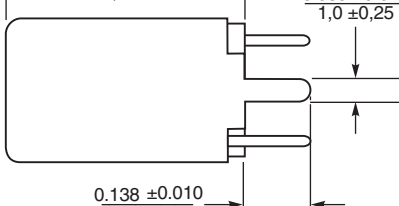
With Shield Can

0.300 max
 7.6



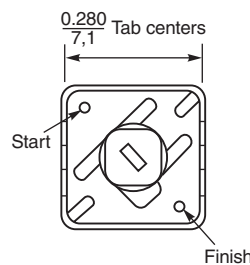
0.216 dia hole
 5.5

0.475 max
 12.1



0.039 ± 0.010
 1.0 ± 0.25

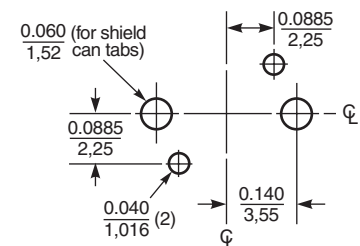
0.138 ± 0.010
 3.51 ± 0.25
Tab length



0.280 Tab centers
 7.1

Finish

Recommended Board Layout



Resistance to soldering heat: Wave solder only. Recommended maximum board surface temperature of 168°C (334°F) for no more than three seconds. Pre-heating is recommended to minimize time over the solder nozzle.

Terminations Series 146 leads: Tin-silver over copper
Series 150 leads: Matte tin over copper
Shield can tabs: Tin-silver over nickel over brass

Coilcraft[®]

Specifications subject to change without notice.
Please check our website for latest information.

Document 109-1 Revised 9/30/08

1102 Silver Lake Road Cary, Illinois 60013 Phone 847/639-6400 Fax 847/639-1469

E-mail info@coilcraft.com Web <http://www.coilcraft.com>



7 mm Tunable RF Coils – 146, 150 Series

Unshielded

TRITUNER 3 TOOLS IN 1
SEE INDEX
TUNING WRENCH

| Part number ¹ | Color | Turns | No core L ² nom (nH) | L min ³ (nH) | L nom (nH) | L max (nH) | Q min @ L nom | No core SRF min (MHz) | DCR max (mOhm) | I _{rms} ⁴ |
|--------------------------|--------|-------|---------------------------------|-------------------------|------------|------------|---------------|-----------------------|----------------|-------------------------------|
| 150-01J08L | Brown | 1½ | 44.5 | 46.0 | 49.0 | 52.0 | 88 @ 50 MHz | 2000 | 8.0 | 11.0 |
| 150-02J08L | Red | 2½ | 58.5 | 62.0 | 70.0 | 78.0 | 100 @ 50 MHz | 1300 | 9.0 | 10.5 |
| 150-03J08L | Orange | 3½ | 77.5 | 82.0 | 98.0 | 114 | 108 @ 50 MHz | 1000 | 10.5 | 9.8 |
| 150-04J08L | Yellow | 4½ | 94.5 | 108 | 130 | 154 | 114 @ 50 MHz | 780 | 11.6 | 9.3 |
| 150-05J08L | Green | 5½ | 116 | 137 | 165 | 193 | 114 @ 50 MHz | 650 | 13.2 | 8.7 |
| 150-06J08L | Blue | 6½ | 138 | 176 | 205 | 234 | 112 @ 50 MHz | 550 | 14.7 | 8.2 |
| 150-07J08L | Violet | 7½ | 156 | 222 | 245 | 268 | 108 @ 50 MHz | 510 | 16.0 | 7.9 |
| 146-01J08L | Brown | 1½ | 45.0 | 47.0 | 50.0 | 53.0 | 90 @ 50 MHz | 1300 | 8.0 | 11.0 |
| 146-02J08L | Red | 2½ | 65.0 | 68.0 | 78.0 | 88.0 | 100 @ 50 MHz | 780 | 9.0 | 10.5 |
| 146-03J08L | Orange | 3½ | 86.0 | 90.0 | 108 | 126 | 100 @ 50 MHz | 560 | 10.5 | 9.8 |
| 146-04J08L | Yellow | 4½ | 111 | 117 | 146 | 175 | 94 @ 50 MHz | 475 | 11.6 | 9.3 |
| 146-05J08L | Green | 5½ | 140 | 148 | 190 | 232 | 88 @ 50 MHz | 430 | 13.0 | 8.8 |
| 146-06J08L | Blue | 6½ | 167 | 188 | 240 | 292 | 78 @ 50 MHz | 390 | 14.5 | 8.3 |
| 146-07J08L | Violet | 7½ | 198 | 231 | 292 | 350 | 72 @ 50 MHz | 350 | 15.6 | 8.0 |
| 146-08J08L | Gray | 8½ | 228 | 272 | 342 | 412 | 68 @ 50 MHz | 330 | 18.0 | 7.5 |
| 146-09J08L | White | 9½ | 264 | 330 | 405 | 480 | 66 @ 40 MHz | 320 | 19.4 | 7.2 |
| 146-10J08L | Black | 10½ | 292 | 390 | 465 | 540 | 60 @ 40 MHz | 290 | 21.0 | 6.8 |

Shielded

| Part number ¹ | Color | Turns | No core L ² nom (nH) | L min ³ (nH) | L nom (nH) | L max (nH) | Q min @ L nom | No core SRF min (MHz) | DCR max (mOhm) | I _{rms} ⁴ |
|--------------------------|--------|-------|---------------------------------|-------------------------|------------|------------|---------------|-----------------------|----------------|-------------------------------|
| 150-01J08SL | Brown | 1½ | 42.5 | 43.5 | 44.5 | 44.5 | 72 @ 50 MHz | 1900 | 8.0 | 11.0 |
| 150-02J08SL | Red | 2½ | 54.0 | 56.0 | 60.0 | 64.0 | 80 @ 50 MHz | 1450 | 9.0 | 10.5 |
| 150-03J08SL | Orange | 3½ | 68.0 | 71.0 | 76.0 | 81.0 | 84 @ 50 MHz | 1100 | 10.5 | 9.8 |
| 150-04J08SL | Yellow | 4½ | 82.5 | 86.0 | 95.0 | 104 | 85 @ 50 MHz | 900 | 11.6 | 9.3 |
| 150-05J08SL | Green | 5½ | 95.5 | 107 | 115 | 123 | 84 @ 50 MHz | 750 | 13.2 | 8.7 |
| 150-06J08SL | Blue | 6½ | 109 | 125 | 134 | 143 | 82 @ 50 MHz | 620 | 14.7 | 8.2 |
| 150-07J08SL | Violet | 7½ | 123 | 150 | 156 | 162 | 80 @ 50 MHz | 560 | 16.0 | 7.9 |
| 146-01J08SL | Brown | 1½ | 44.0 | 45.0 | 46.0 | 47.0 | 76 @ 50 MHz | 1550 | 8.0 | 11.0 |
| 146-02J08SL | Red | 2½ | 59.0 | 62.0 | 65.0 | 68.0 | 78 @ 50 MHz | 850 | 9.0 | 10.5 |
| 146-03J08SL | Orange | 3½ | 75.0 | 80.0 | 85.0 | 90.0 | 78 @ 50 MHz | 660 | 10.5 | 9.8 |
| 146-04J08SL | Yellow | 4½ | 95.0 | 100 | 110 | 120 | 78 @ 50 MHz | 570 | 11.6 | 9.3 |
| 146-05J08SL | Green | 5½ | 115 | 120 | 135 | 150 | 76 @ 50 MHz | 510 | 13.0 | 8.8 |
| 146-06J08SL | Blue | 6½ | 136 | 142 | 163 | 184 | 72 @ 50 MHz | 470 | 14.5 | 8.3 |
| 146-07J08SL | Violet | 7½ | 155 | 172 | 194 | 216 | 68 @ 50 MHz | 430 | 15.6 | 8.0 |
| 146-08J08SL | Gray | 8½ | 176 | 200 | 224 | 248 | 66 @ 50 MHz | 400 | 18.0 | 7.5 |
| 146-09J08SL | White | 9½ | 202 | 234 | 260 | 284 | 60 @ 50 MHz | 360 | 19.4 | 7.2 |
| 146-10J08SL | Black | 10½ | 224 | 260 | 288 | 315 | 56 @ 50 MHz | 330 | 21.0 | 6.8 |

- To order fixed inductance parts without cores, eliminate the "J08", e.g. 150-01L or 150-01SL
- Inductance and Q readings taken on Boonton 260-A Q meter with 16 AWG tinned copper 1/2" long soldered along leads and bent at 90° 1/4" down from standoffs.
All inductance values greater than 0.1 µH read at recommended Q meter frequency.
All inductance values below 0.1 µH calculated from readings taken at 50 MHz.

- L min measured with core halfway out top of form.
- Average current for a 40°C rise above 25°C ambient.
- Core material: Carbonyl J; Core length: 1/4"
- Taps available in 150 series parts at 1/8, 3/8, 5/8 and 7/8 turns.
- Operating temperature range -40°C to +85°C.
- Electrical specifications at 25°C.

COILCRAFT ACCURATE
PRECISION REPEATABLE
MEASUREMENTS
SEE INDEX **TEST FIXTURES**

Coilcraft®

Specifications subject to change without notice.
Please check our website for latest information.

Document 109-2 Revised 09/30/08

1102 Silver Lake Road Cary, Illinois 60013 Phone 847/639-6400 Fax 847/639-1469

E-mail info@coilcraft.com Web <http://www.coilcraft.com>

Данный компонент на территории Российской Федерации

Вы можете приобрести в компании MosChip.

Для оперативного оформления запроса Вам необходимо перейти по данной ссылке:

<http://moschip.ru/get-element>

Вы можете разместить у нас заказ для любого Вашего проекта, будь то серийное производство или разработка единичного прибора.

В нашем ассортименте представлены ведущие мировые производители активных и пассивных электронных компонентов.

Нашей специализацией является поставка электронной компонентной базы двойного назначения, продукции таких производителей как XILINX, Intel (ex.ALTERA), Vicor, Microchip, Texas Instruments, Analog Devices, Mini-Circuits, Amphenol, Glenair.

Сотрудничество с глобальными дистрибьюторами электронных компонентов, предоставляет возможность заказывать и получать с международных складов практически любой перечень компонентов в оптимальные для Вас сроки.

На всех этапах разработки и производства наши партнеры могут получить квалифицированную поддержку опытных инженеров.

Система менеджмента качества компании отвечает требованиям в соответствии с ГОСТ Р ИСО 9001, ГОСТ РВ 0015-002 и ЭС РД 009

Офис по работе с юридическими лицами:

105318, г.Москва, ул.Щербаковская д.3, офис 1107, 1118, ДЦ «Щербаковский»

Телефон: +7 495 668-12-70 (многоканальный)

Факс: +7 495 668-12-70 (доб.304)

E-mail: info@moschip.ru

Skype отдела продаж:

moschip.ru

moschip.ru_4

moschip.ru_6

moschip.ru_9