

ATEVK-MXT640U-A Kit Contents

1x 5.9" Touchscreen Assembly (75533)
1x ATMXTMXT640U PCB (80720)
4x Self Adhesive Feet
1x USB Memory Stick (Documentation, Software, Schematics)
1x USB Cable
1x Passive Stylus
1x Copper Flex Panel (80407)
1x Ground Connection Wire
1x ATEVK-MXT640U-A Quickstart Guide

ATEVK-MXT640U-A Evaluation Kit Information Sheet

Using the Evaluation Kit

This kit (ATEVK-MXT640U-A) is for the evaluation and development of Microchip maXTouch™ applications using the ATMXT640U Integrated Circuit (IC).

In this example, the device can be connected through a flexible printed circuit (FPC) to an Indium Tin Oxide (ITO) glass touchscreen (75533). A set of self-adhesive feet have been supplied with the kit to allow for the touchscreen assembly to be used on the desk or bench. Alternatively, the touchscreen assembly may be mounted to a suitable display for evaluation of *on-screen* performance.



Caution: This unit contains a glass panel in front of the touchscreen. Whilst the glass is strengthened to reduce the risk of breakage, care should be taken not to subject the glass to excessive force in order to reduce the risk of glass breakage that may result in minor or moderate injury.

Copper Flex Panel

The supplied adhesive flex panel, which can be cut to size, can be used to simulate display load. Connect it to any available GND pin. Before adhering the panel, remember to remove any protective coating from the touchscreen. The supplied configuration is tuned for operation with the flex panel in place, for optimum performance please use the flex panel.

Evaluation Software

A PC application: maXTouch Studio Lite is included to facilitate evaluation of the product. The information sheet gives only a brief overview of the maXTouch Studio operation. The *Lite* version of the tool supplied on the USB memory stick allows viewing of messages and objects and loading of the configuration files. To tune and change objects, a full version of the tool is available for download. Please contact your local Microchip representative for details.

- Insert the supplied USB Memory Stick into the PC. Double click and install the software for maXTouch Studio.
- Connect the supplied USB cable to the ATMXT640U PCB and to any available USB port.

Note: If this is the first time the tool has been run, then perform the following steps:

- In maXTouch Studio toolbar select the menu Server > Load Bridge Client
- Open the BridgeClients folder and select BridgeClientNet.exe
- Click the “Open” button – the Bridge Client will load.
- Select Server > Hide Bridge Client (do NOT close (red X) the Bridge Client window).

Object Explorer

The maXTouch Studio application via the Object Explorer allows for various operating parameters to be configured. The Object Explorer is also the means by which different configurations, such as touch keys or touchscreen format can be loaded into the ATMXT640U device. The explorer only displays the objects present in the connected device.

Before making changes to individual parameters, it is advisable to save the current default settings.

- This can be done from the Save Config option in the Configuration menu in the maXTouch Studio toolbar.
- To change a parameter, click on the object you wish to alter (e.g. Multiple Touch Touchscreen T100).
- After changing any parameters, click on the Write button of the active window to apply the new settings.

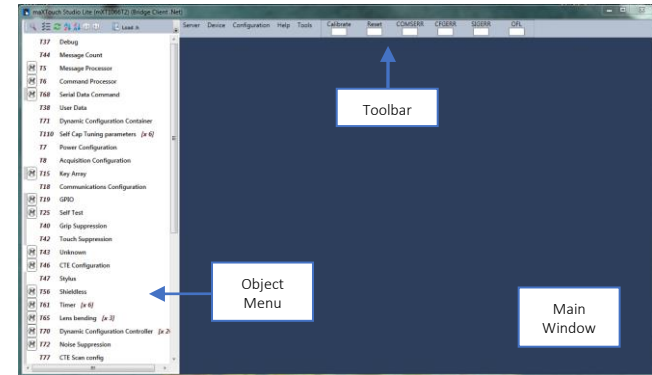
NOTE: Settings will revert to their defaults when you unplug and re-plug the USB cable unless you click on the Backup button in the Device menu on maXTouch Studio toolbar.

- To view touches graphically use Touch Reporter in the Tools menu in the toolbar.

Restoring Factory Configuration

If required, the unit may be set back to factory default settings. This may be of use if settings have been changed, and the unit is no longer functioning as intended.

- Run the maXTouch Studio application and select Configuration from the toolbar.
- Select Zero Config and then Load Config.
- From the Open dialog box, navigate to the *Default Configuration File* folder on the supplied USB memory stick and locate and load the *xcfg*. file
- Once the file is loaded, click on the Device menu on the maXTouch Studio.
- Select Backup then select Reset. The default factory settings are now set.



Additional Information

More information about this product is available in the data sheet and user guide. More information about maXTouch Studio is available from your Microchip representative.

Данный компонент на территории Российской Федерации

Вы можете приобрести в компании MosChip.

Для оперативного оформления запроса Вам необходимо перейти по данной ссылке:

<http://moschip.ru/get-element>

Вы можете разместить у нас заказ для любого Вашего проекта, будь то серийное производство или разработка единичного прибора.

В нашем ассортименте представлены ведущие мировые производители активных и пассивных электронных компонентов.

Нашей специализацией является поставка электронной компонентной базы двойного назначения, продукции таких производителей как XILINX, Intel (ex.ALTERA), Vicor, Microchip, Texas Instruments, Analog Devices, Mini-Circuits, Amphenol, Glenair.

Сотрудничество с глобальными дистрибьюторами электронных компонентов, предоставляет возможность заказывать и получать с международных складов практически любой перечень компонентов в оптимальные для Вас сроки.

На всех этапах разработки и производства наши партнеры могут получить квалифицированную поддержку опытных инженеров.

Система менеджмента качества компании отвечает требованиям в соответствии с ГОСТ Р ИСО 9001, ГОСТ РВ 0015-002 и ЭС РД 009

Офис по работе с юридическими лицами:

105318, г.Москва, ул.Щербаковская д.3, офис 1107, 1118, ДЦ «Щербаковский»

Телефон: +7 495 668-12-70 (многоканальный)

Факс: +7 495 668-12-70 (доб.304)

E-mail: info@moschip.ru

Skype отдела продаж:

moschip.ru

moschip.ru_4

moschip.ru_6

moschip.ru_9