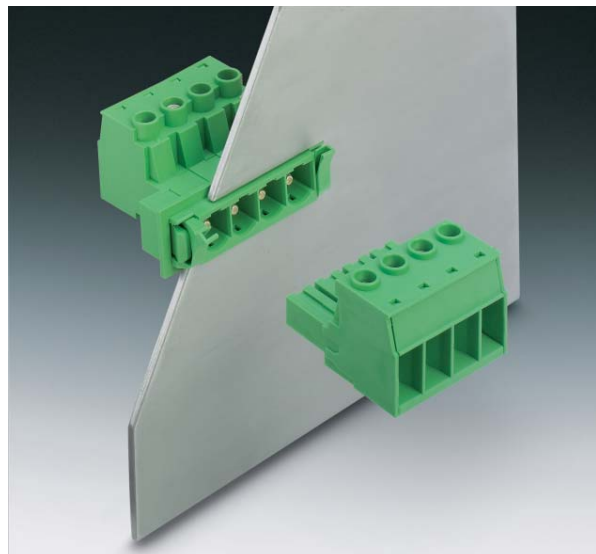


POWER COMBICON feed-through plugs 10.16 mm pitch DFK-PC 16/...-ST(F)-10,16

If a 16 mm² conductor is used, the new feed-through plug connector offers the possibility to transfer a current of 76 A from inside the device to outside and vice-versa. Just insert DFK-PC 16 into the opening in the housing and fix it in place using the easy-to-use snap-lock mechanism, without the need for additional tools. This version is designed in such a way that there is a screw connection on the device inside to guide cables from outside the device to the inside (or vice-versa). In combination with the standard PC 16 plugs, a cable-cable feed-through fit in the device housing can be realized for 2 to 9 positions. In the STF versions, the shielding function can be guided onto or through the housing wall. The fastening flanges offer vibration-proof connection. The feed-through plug connector is designed for 1.0 to 3.0 mm panel thickness.



COMBICON Select

The COMBICON search engine with CAD downloading



COMBICON Select – the printed circuit board connection software supports your workflow from the PCB and housing layout to the ordering process with:

- Systematic and fast selection of products
- Universal Internet aided engineering with extensive CAD downloading
- Easy-to-use e-shopping functions.

select.phoenixcontact.com/combicon

Note:

In compliance with DIN EN 61984, COMBICON plug connectors come without switching capacity. During designated use, they must not be plugged in or disconnected when carrying voltage or under load.

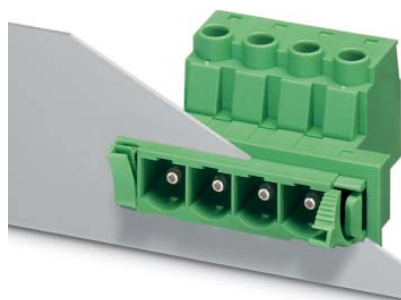


Fast snap-lock mechanism



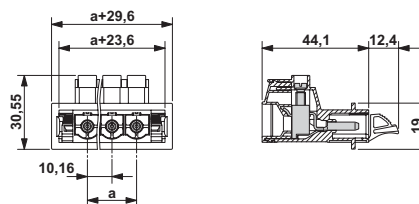
Screw fastening

POWER COMBICON
Feed-through plugs
DFK-PC 16/...-ST-10,16
10.16 mm Pitch

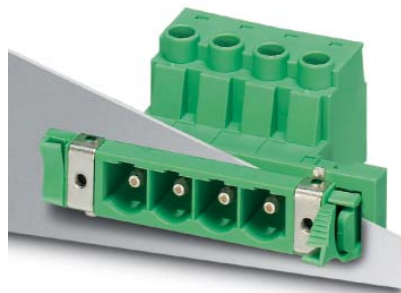


Description	No. of pos.	Dim. a [mm]	Type	Order No.	Pcs./Pkt.
POWER COMBICON plugs, 10.16 mm pitch, color: green	2	10.16	DFK-PC 16/ 2-ST-10,16	1703373	50
	3	20.32	DFK-PC 16/ 3-ST-10,16	1703386	50
	4	30.48	DFK-PC 16/ 4-ST-10,16	1703399	50
	5	40.64	DFK-PC 16/ 5-ST-10,16	1703409	50
	6	50.80	DFK-PC 16/ 6-ST-10,16	1703412	50
	7	60.96	DFK-PC 16/ 7-ST-10,16	1703425	50
	8	71.12	DFK-PC 16/ 8-ST-10,16	1703438	50
	9	81.28	DFK-PC 16/ 9-ST-10,16	1703441	50
	Keying profile , is inserted into the slot on the plug and header, red insulating material			CP-HCC 4	1600027
Screws , (DIN ISO 7049 screw ST 2,9 x 9,5), for fixing feed-through terminal blocks on the housing wall			DFK-PC 16-SS	1705449	20
Screwdriver , to actuate the terminal screws			SZS 1,0 x 4,0	1205066	10
Marker card , with 10 pcs., 10-section marker strips, white, self-adhesive, for 100 terminal blocks			SK 10/5 (see COMBICON catalog)		
Crimp pliers , for ferrules of up to 16 mm ²			CRIMPFOX 16 S	1207983	1
Technical data			see description		
Dimensions			10.16		
Pitch [mm]					
Technical data in accordance with IEC/ DIN VDE					
Insulating material group			I		
Surge voltage category / contamination class			III / 3 III / 2 II / 2		
Rated voltage [V]			1000 1000 1000		
Rated surge voltage [kV]			8 8 6		
Nominal current / cross section [A] / [mm ²]			57 ¹⁾ / 10		
Maximum load current / cross section [A] / [mm ²]			76 ¹⁾ / 16		
Connection capacity					
Solid / stranded / conductor sizes [mm ²] / [mm ²] / AWG			0.75 - 16 / 0.75 - 16 / 18 - 6		
Stranded with ferrule without / with plastic sleeve [mm ²]			0,5 - 16 ²⁾ / 0,5 - 16 ²⁾		
Multiple connection (2 conductors with same cross section)					
Solid / stranded [mm ²]			0.75 - 6 / 0.75 - 6		
Stranded with ferrules without plastic sleeve [mm ²]			0.5 - 4		
Stranded with TWIN ferrule with plastic sleeve [mm ²]			0.5 - 6		
Stripping length [mm]			14		
Internal cylindrical gage (IEC 60947-1)			A6		
Screw thread			M4		
Tightening torque [Nm]			1.5 - 1.7		
Insulation material			PA		
Inflammability class acc. to UL 94			V0		
Approval data (UL/CUL and CSA)					
Usegroup B [V] / [A] / AWG			600 / 55 / 20 - 6		
Usegroup C [V] / [A] / AWG			600 / 55 / 20 - 6		
Usegroup D [V] / [A] / AWG			on request		

¹⁾ Observe derating curve
²⁾ Only in connection with CRIMPFOX 16 S



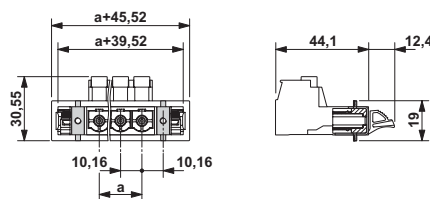
POWER COMBICON
Feed-through plugs
DFK-PC 16/...-STF-10,16
10.16 mm Pitch



Description	No. of pos.	Dim. a [mm]	Type	Order No.	Pcs./Pkt.
POWER COMBICON feed-through plugs, 10.16 mm pitch, color: green, with screw flange	2	10.16	DFK-PC 16/ 2-STF-10,16	1703454	50
	3	20.32	DFK-PC 16/ 3-STF-10,16	1703467	50
	4	30.48	DFK-PC 16/ 4-STF-10,16	1703470	50
	5	40.64	DFK-PC 16/ 5-STF-10,16	1703483	50
	6	50.80	DFK-PC 16/ 6-STF-10,16	1703496	50
	7	60.96	DFK-PC 16/ 7-STF-10,16	1703506	50
	8	71.12	DFK-PC 16/ 8-STF-10,16	1703519	50
	9	81.28	DFK-PC 16/ 9-STF-10,16	1703522	50
	Keying profile , is inserted into the slot on the plug and header, red insulating material			CP-HCC 4	1600027
Screws , (DIN ISO 7049 screw ST 2,9 x 9,5), for fixing feed-through terminal blocks on the housing wall			DFK-PC 16-SS	1705449	20
Screwdriver , to actuate the terminal screws			SZS 1,0 x 4,0	1205066	10
Marker card , with 10 pcs., 10-section marker strips, white, self-adhesive, for 100 terminal blocks			SK 10/5 (see COMBICON catalog)		
Crimp pliers , for ferrules of up to 16 mm ²			CRIMPFOX 16 S	1207983	1
Technical data			see description		
Dimensions			10.16		
Pitch		[mm]			
Technical data in accordance with IEC/ DIN VDE					
Insulating material group		-		I	
Surge voltage category / contamination class		- / -	III / 3	III / 2	II / 2
Rated voltage		[V]	1000	1000	1000
Rated surge voltage		[kV]	8	8	6
Nominal current / cross section		[A] / [mm ²]		57 ¹⁾ / 10	
Maximum load current / cross section		[A] / [mm ²]		76 ¹⁾ / 16	
Connection capacity					
Solid / stranded / conductor sizes		[mm ²] / [mm ²] / AWG		0.75 - 16 / 0.75 - 16 / 18 - 6	
Stranded with ferrule without / with plastic sleeve		[mm ²]		0,5 - 16 ²⁾ / 0,5 - 16 ²⁾	
Multiple connection (2 conductors with same cross section)					
Solid / stranded		[mm ²]		0.75 - 6 / 0.75 - 6	
Stranded with ferrules without plastic sleeve		[mm ²]		0.5 - 4	
Stranded with TWIN ferrule with plastic sleeve		[mm ²]		0.5 - 6	
Stripping length		[mm]		14	
Internal cylindrical gage (IEC 60947-1)		-		A6	
Screw thread		-		M4	
Tightening torque		[Nm]		1.5 - 1.7	
Insulation material				PA	
Inflammability class acc. to UL 94				V0	
Approval data (UL/CUL and CSA)					
Usegroup B		[V] / [A] / AWG		600 / 55 / 20 - 6	
Usegroup C		[V] / [A] / AWG		600 / 55 / 20 - 6	
Usegroup D		[V] / [A] / AWG		on request	

¹⁾ Observe derating curve

²⁾ Only in connection with CRIMPFOX 16 S

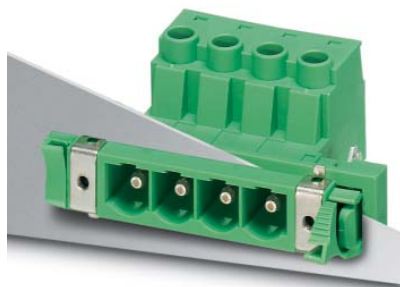


POWER COMBICON

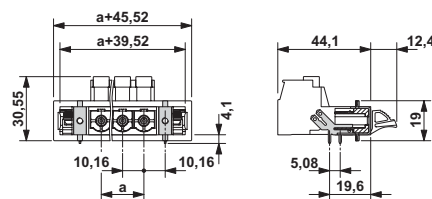
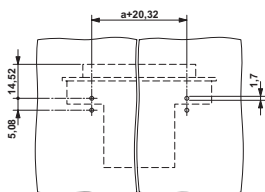
Feed-through plugs

DFK-PC 16/...-STF-SH-10,16

10.16 mm Pitch

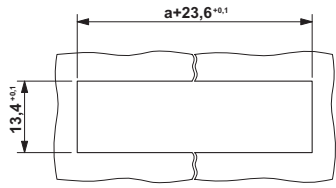


Description	No. of pos.	Dim. a [mm]	Type	Order No.	Pcs./Pkt.
POWER COMBICON feed-through plugs, 10.16 mm pitch, color: green, shielded version, with screw flange	2	10.16	DFK-PC 16/ 2-STF-SH-10,16	1703616	50
	3	20.32	DFK-PC 16/ 3-STF-SH-10,16	1703629	50
	4	30.48	DFK-PC 16/ 4-STF-SH-10,16	1703632	50
	5	40.64	DFK-PC 16/ 5-STF-SH-10,16	1703645	50
	6	50.80	DFK-PC 16/ 6-STF-SH-10,16	1703658	50
	7	60.96	DFK-PC 16/ 7-STF-SH-10,16	1703661	50
	8	71.12	DFK-PC 16/ 8-STF-SH-10,16	1703674	50
	9	81.28	DFK-PC 16/ 9-STF-SH-10,16	1703687	50
Keying profile , is inserted into the slot on the plug and header, red insulating material			CP-HCC 4	1600027	50
Screws , (DIN ISO 7049 screw ST 2,9 x 9,5), for fixing feed-through terminal blocks on the housing wall			DFK-PC 16-SS	1705449	20
Screwdriver , to actuate the terminal screws			SZS 1,0 x 4,0	1205066	10
Marker card , with 10 pcs., 10-section marker strips, white, self-adhesive, for 100 terminal blocks			SK 10/5 (see COMBICON catalog)		
Crimp pliers , for ferrules of up to 16 mm ²			CRIMPFOX 16 S	1207983	1
Technical data					
Dimensions				see description	
Pitch		[mm]		10.16	
Technical data in accordance with IEC/ DIN VDE					
Insulating material group		-		I	
Surge voltage category / contamination class		- / -	III / 3	III / 2	II / 2
Rated voltage		[V]	1000	1000	1000
Rated surge voltage		[kV]	8	8	6
Nominal current / cross section		[A] / [mm ²]		57 ¹⁾ / 10	
Maximum load current / cross section		[A] / [mm ²]		76 ¹⁾ / 16	
Connection capacity					
Solid / stranded / conductor sizes		[mm ²] / [mm ²] / AWG		0.75 - 16 / 0.75 - 16 / 18 - 6	
Stranded with ferrule without / with plastic sleeve		[mm ²]		0,5 - 16 ²⁾ / 0,5 - 16 ²⁾	
Multiple connection (2 conductors with same cross section)					
Solid / stranded		[mm ²]		0.75 - 6 / 0.75 - 6	
Stranded with ferrules without plastic sleeve		[mm ²]		0.5 - 4	
Stranded with TWIN ferrule with plastic sleeve		[mm ²]		0.5 - 6	
Stripping length		[mm]		14	
Internal cylindrical gage (IEC 60947-1)		-		A6	
Screw thread		-		M4	
Tightening torque		[Nm]		1.5 - 1.7	
Insulation material				PA	
Inflammability class acc. to UL 94				V0	
Approval data (UL/CUL and CSA)					
Usegroup B		[V] / [A] / AWG		600 / 55 / 20 - 6	
Usegroup C		[V] / [A] / AWG		600 / 55 / 20 - 6	
Usegroup D		[V] / [A] / AWG		on request	

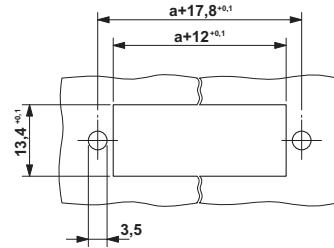


¹⁾ Observe derating curve

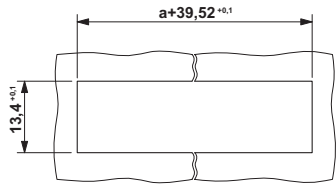
²⁾ Only in connection with CRIMPFOX 16 S



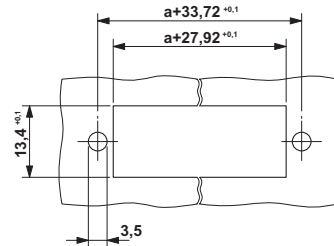
Sheet metal cutout for snap-lock mechanism for "ST" versions



Sheet metal cutout for screw connection for "ST" versions



Sheet metal cutout for snap-lock mechanism for "STF" versions



Sheet metal cutout for screw connection for "STF" versions

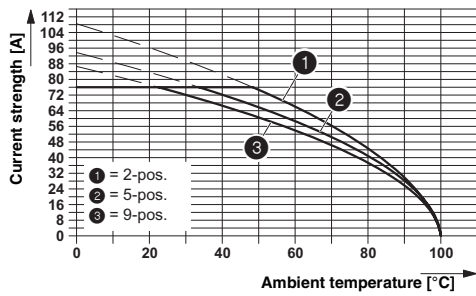
Derating curve

Type: PC 16/...-ST-10,16 with DFK-PC 16/...-ST-10,16

Connected conductor cross section = 16 mm²

Reduction factor = 0.8

Number of positions = see diagram



Данный компонент на территории Российской Федерации

Вы можете приобрести в компании MosChip.

Для оперативного оформления запроса Вам необходимо перейти по данной ссылке:

<http://moschip.ru/get-element>

Вы можете разместить у нас заказ для любого Вашего проекта, будь то серийное производство или разработка единичного прибора.

В нашем ассортименте представлены ведущие мировые производители активных и пассивных электронных компонентов.

Нашей специализацией является поставка электронной компонентной базы двойного назначения, продукции таких производителей как XILINX, Intel (ex.ALTERA), Vicor, Microchip, Texas Instruments, Analog Devices, Mini-Circuits, Amphenol, Glenair.

Сотрудничество с глобальными дистрибьюторами электронных компонентов, предоставляет возможность заказывать и получать с международных складов практически любой перечень компонентов в оптимальные для Вас сроки.

На всех этапах разработки и производства наши партнеры могут получить квалифицированную поддержку опытных инженеров.

Система менеджмента качества компании отвечает требованиям в соответствии с ГОСТ Р ИСО 9001, ГОСТ РВ 0015-002 и ЭС РД 009

Офис по работе с юридическими лицами:

105318, г.Москва, ул.Щербаковская д.3, офис 1107, 1118, ДЦ «Щербаковский»

Телефон: +7 495 668-12-70 (многоканальный)

Факс: +7 495 668-12-70 (доб.304)

E-mail: info@moschip.ru

Skype отдела продаж:

moschip.ru

moschip.ru_4

moschip.ru_6

moschip.ru_9