

NEW PRODUCT EC NO: SHZ010-0088 DRINKWEI 2009/09/14 CHYKD-RZHANG 2009/09/14 APPR: XJ.SONG 2009/09/14 REV B	QUALITY SYMBOLS ▽=0 ◻=0	GENERAL TOLERANCES (UNLESS SPECIFIED) mm INCH 4 PLACES ± --- ± --- 3 PLACES ± --- ± --- 2 PLACES ± 0.25 ± --- 1 PLACE ± 0.30 ± --- ANGULAR ± -- °	DIMENSION STYLE MM ONLY DRAWN BY: KLAUS WEI CHECKED BY: ROST ZHANG APPROVED BY: HARVEY WANG MATERIAL NO.	DATE: 2008/03/31 DATE: 2008/03/31 DATE: 2008/03/31 DATE: 2008/03/31	SCALE: 5:1 DESIGN UNITS: METRIC THIRD ANGLE PROJECTION	TITLE: MINI DISPLAY PORT PLUG MOLEX INCORPORATED DOCUMENT NO. SD-105061-200 SHEET NO. 1 OF 7	
	DRAFT WHERE APPLICABLE MUST REMAIN WITHIN DIMENSIONS		SEE SHEET 2	THIS DRAWING CONTAINS INFORMATION THAT IS PROPRIETARY TO MOLEX INCORPORATED AND SHOULD NOT BE USED WITHOUT WRITTEN PERMISSION			

TOP ROW			BOTTOM ROW		
PIN NUMBER	SIGNAL TYPE	PIN NAME	PIN NUMBER	SIGNAL TYPE	PIN NAME
1	GND	GND	2	IN	HOT PLUG DETECT
3	OUT	ML_LANE 0(p)	4	CONFIG	CONFIG 1
5	OUT	ML_LANE 0(n)	6	CONFIG	CONFIG 2
7	GND	GND	8	GND	GND
9	OUT	ML_LANE 1(p)	10	OUT	ML_LANE 3(p)
11	OUT	ML_LANE 1(n)	12	OUT	ML_LANE 3(n)
13	GND	GND	14	GND	GND
15	OUT	ML_LANE 2(p)	16	I/O	AUX_CH(p)
17	OUT	ML_LANE 2(n)	18	I/O	AUX_CH(n)
19	RTN	RETURN	20	POWER OUT	DP_PWR

ITEM	PART NAME	PART NUMBER	QTY'S
1	SUB-ASSEMBLY	WHITE	105061-2200
		BLACK	105061-2100
2	MAIN-SHELL	105061-0005	1
3	BOTTOM SHELL	105061-0006	1
4	TOP-SHELL	105061-0007	1

NOTES:

1. MATERIAL:

- 1.1. PLASTIC: HIGH TEMPERATURE THERMOPLASTICS.
- 1.2. TERMINAL: PHOSPHOR BRONZE.
- 1.3. SHIELD SHELL: COPPER ALLOY.
- 1.4. OTHER SHELL: COPPER ALLOY.

2. PLATING:

2.1. TERMINAL:

- 2.1.1. UNDERPLATING: NICKEL 1.30 MICROMETER MIN.
- 2.1.2. CONTACT AREA: GOLD 0.76 MICROMETER MIN.
- 2.1.3. SOLDER AREA: GOLD FLASH.

2.2. METAL SHELL: NICKEL 1.30 MICROMETER MIN.

3. MECHANICAL PROPERTIES:

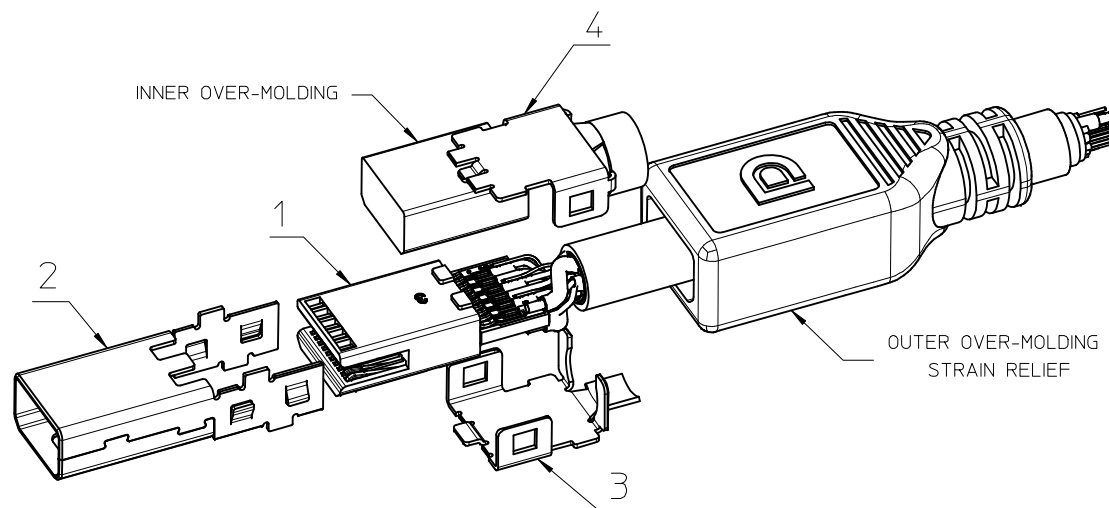
- 3.1. TERMINAL RETENTION FORCE: 0.5 Kgf MIN.
- 3.2. MATING FORCE: 4.0 Kgf MAX.
- 3.3. NORMAL FORCE: 25gf MIN.
- 3.4. DURABILITY: 1500 CYCLES.

4. ELECTRICAL PROPERTIES:

- 4.1. APPLIED VOLTAGE RATING: 30V AC (RMS)
- 4.2. CONTACT CURRENT RATING: 0.5 Amp
- 4.3. DIELECTRIC WITHSTANDING: 200V AC MIN.
- 4.4. INSULATION RESISTANCE: 100 Megaohm MIN.

5. ENVIRONMENTAL PROPERTIES:

- 5.1. OPERATING TEMPERATURE: -20°C TO 85°C.
 - 5.2. BE APPLICABLE TO HANDWORK SOLDER & IR-REFLOW PROCESS
6. THIS PRODUCT COMPLIANT TO RoHS DIRECTIVE 2002/95/EC, AND ELV DIRECTIVE 2000/53/EC.

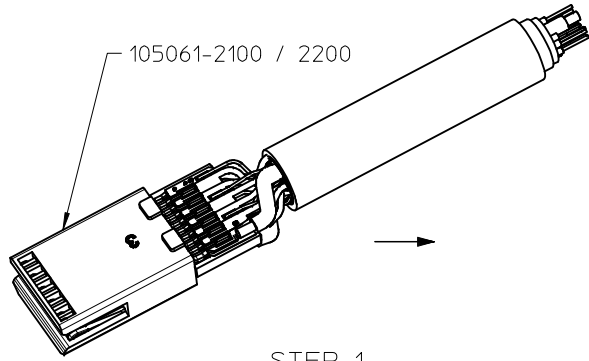


NOTES:

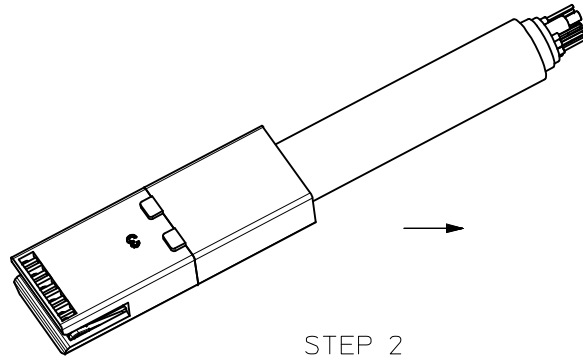
OVER-MOLDING ONLY FOR REFERENCE

NEW PRODUCT EC NO: SH2010-0088 DRW:KWEI 2009/09/14 CHK:RZHANG 2009/09/14 APPR:XJ.SONG 2009/09/21	DESCRIPTION REV	QUALITY SYMBOLS	GENERAL TOLERANCES (UNLESS SPECIFIED)	DIMENSION STYLE	SCALE	DESIGN UNITS	THIRD ANGLE PROJECTION															
		$\nabla=0$ $\square=0$	<table border="1"> <thead> <tr> <th></th> <th>mm</th> <th>INCH</th> </tr> </thead> <tbody> <tr> <td>4 PLACES</td> <td>±---</td> <td>±---</td> </tr> <tr> <td>3 PLACES</td> <td>±---</td> <td>±---</td> </tr> <tr> <td>2 PLACES</td> <td>±---</td> <td>±---</td> </tr> <tr> <td>1 PLACE</td> <td>±---</td> <td>±---</td> </tr> </tbody> </table>		mm	INCH	4 PLACES	±---	±---	3 PLACES	±---	±---	2 PLACES	±---	±---	1 PLACE	±---	±---	MM ONLY	N/A	METRIC	
			mm	INCH																		
		4 PLACES	±---	±---																		
3 PLACES	±---	±---																				
2 PLACES	±---	±---																				
1 PLACE	±---	±---																				
	ANGULAR ±---°	DRAWN BY: KLAUS WEI DATE: 2008/03/31 CHECKED BY: ROST ZHANG DATE: 2008/03/31 APPROVED BY: HARVEY WANG DATE: 2008/03/31	TITLE	MINI DISPLAY PORT PLUG																		
	DRAFT WHERE APPLICABLE MUST REMAIN WITHIN DIMENSIONS	SEE TABLE	MOLEX INCORPORATED DOCUMENT NO. SD-105061-200		SHEET NO. 2 OF 7																	
			THIS DRAWING CONTAINS INFORMATION THAT IS PROPRIETARY TO MOLEX INCORPORATED AND SHOULD NOT BE USED WITHOUT WRITTEN PERMISSION																			

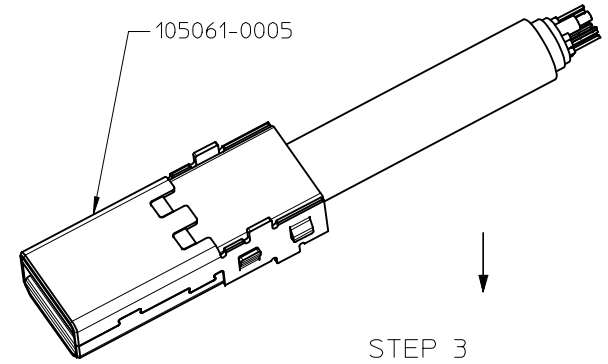
ASSEMBLY PROCEDURE



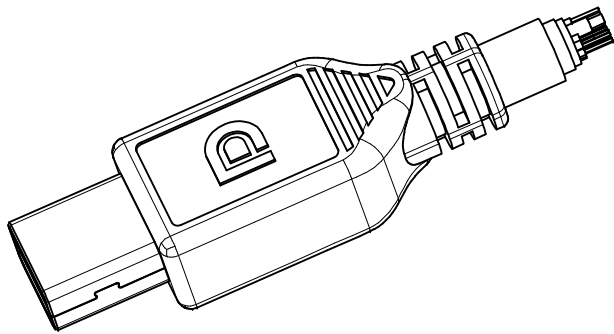
STEP 1
SOLDER WIRE



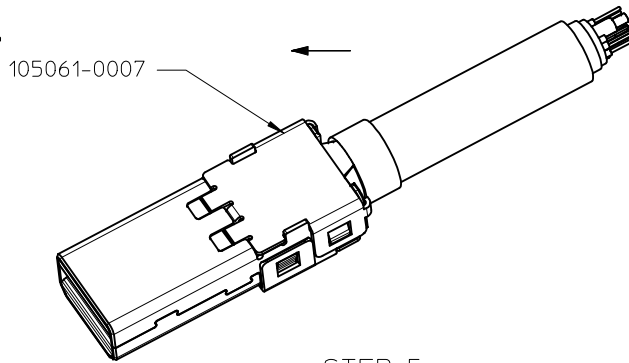
STEP 2
INNER OVER-MOLDING



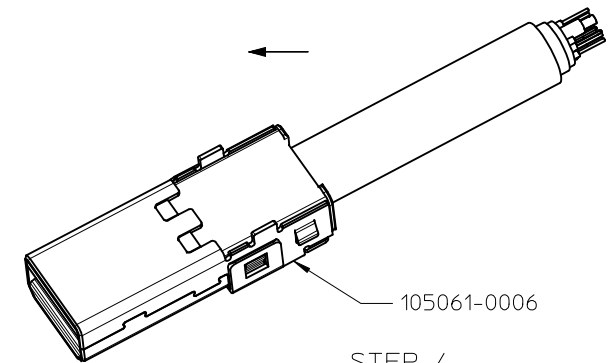
STEP 3
ASSEMBLE MAIN SHELL



STEP 6
OUTER OVER-MOLDING

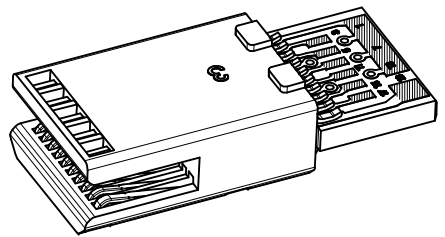
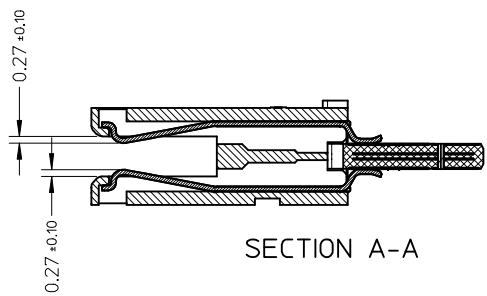
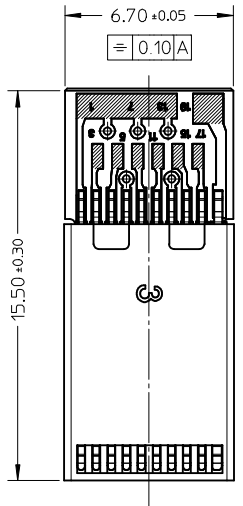


STEP 5
ASSEMBLE TOP SHELL AND CRIMPING

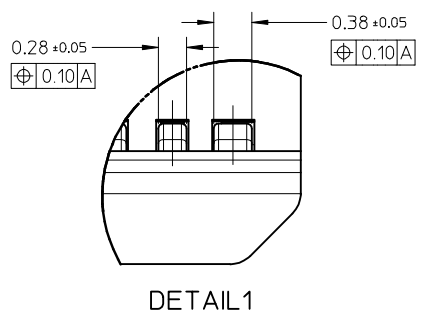
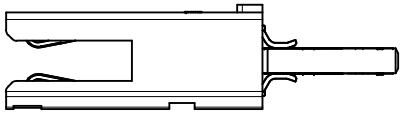
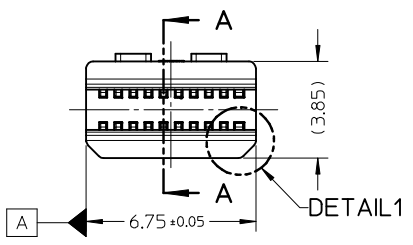


STEP 4
ASSEMBLE BOTTOM SHELL

NEW PRODUCT IEC NO: SH2010-0088 DRW:KWCWEI 2009/09/14 CH:KDRZHANG 2009/09/14 APPR:XJ.SONG 2009/09/21	QUALITY SYMBOLS ▽=0 ◻=0	GENERAL TOLERANCES (UNLESS SPECIFIED)		DIMENSION STYLE MM ONLY	SCALE N/A	DESIGN UNITS METRIC	THIRD ANGLE PROJECTION																	
		<table border="1"> <tr> <th></th> <th>mm</th> <th>INCH</th> </tr> <tr> <td>4 PLACES</td> <td>±---</td> <td>±---</td> </tr> <tr> <td>3 PLACES</td> <td>±---</td> <td>±---</td> </tr> <tr> <td>2 PLACES</td> <td>±---</td> <td>±---</td> </tr> <tr> <td>1 PLACE</td> <td>±---</td> <td>±---</td> </tr> <tr> <td colspan="3">ANGULAR ±---°</td> </tr> </table>		mm	INCH	4 PLACES	±---	±---	3 PLACES	±---	±---	2 PLACES	±---	±---	1 PLACE	±---	±---	ANGULAR ±---°			DRAWN BY: KLAUS WEI DATE: 2008/03/31	TITLE: MINI DISPLAY PORT PLUG		
		mm	INCH																					
	4 PLACES	±---	±---																					
3 PLACES	±---	±---																						
2 PLACES	±---	±---																						
1 PLACE	±---	±---																						
ANGULAR ±---°																								
	DRAFT WHERE APPLICABLE MUST REMAIN WITHIN DIMENSIONS	APPROVED BY: HARVEY WANG DATE: 2008/03/31	MATERIAL NO. SEE ABOVE	MOLEX INCORPORATED																				
			SIZE A3	THIS DRAWING CONTAINS INFORMATION THAT IS PROPRIETARY TO MOLEX INCORPORATED AND SHOULD NOT BE USED WITHOUT WRITTEN PERMISSION	DOCUMENT NO. SD-105061-200	SHEET NO. 3 OF 7																		



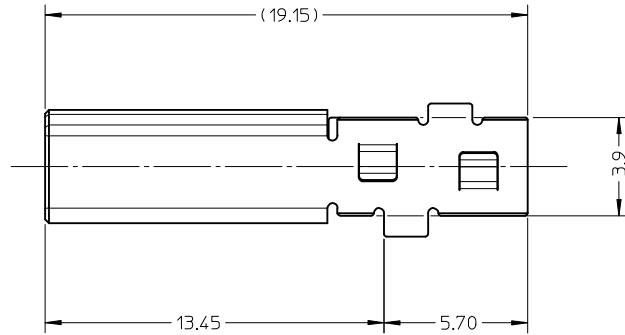
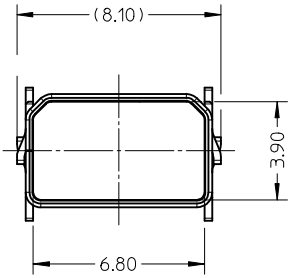
- NOTES:
1. MATERIAL:
 PLASTIC: LCP ,UL94V-0 .
 METAL: COPPER OR COPPER ALLOY.
 2. PACKAGING SPECIFICATION : PK-105061-001.
 3. PRODUCT SPECIFICATION: PS-105061-001.



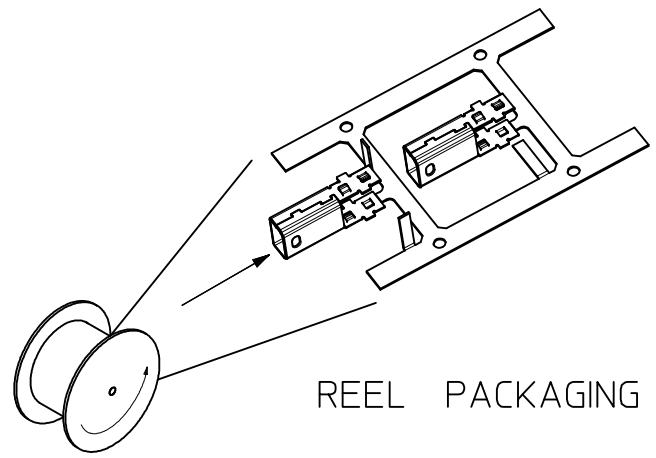
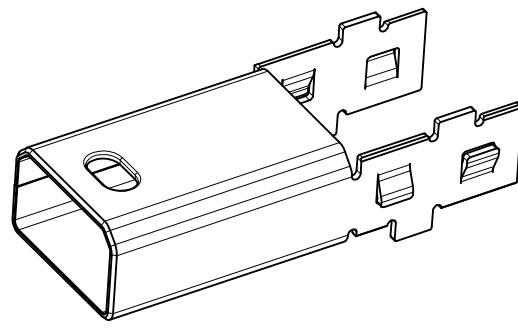
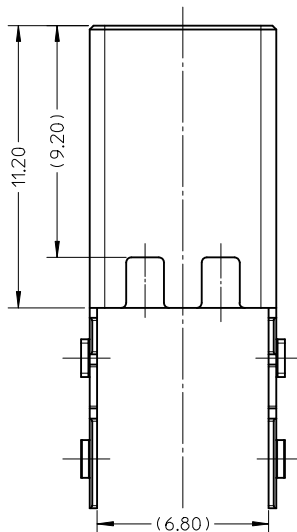
105061-2200	LCP	WHITE
105061-2100	LCP	BLACK
PART NUMBER	RESIN TYPE	COLOR

NEW PRODUCT EC NO: SH2010-0088 DRW:KWEI CH:KDRZHANG APPR:XJ.SONG	2009/09/14 2009/09/14 2009/09/21	DESCRIPTION REV	QUALITY SYMBOLS	GENERAL TOLERANCES (UNLESS SPECIFIED) mm INCH 4 PLACES ± --- ± --- 3 PLACES ± --- ± --- 2 PLACES ± 0.10 ± --- 1 PLACE ± 0.15 ± --- ANGULAR ± ---°	DIMENSION STYLE MM ONLY DRAWN BY: KLAUS WEI CHECKED BY: ROST ZHANG APPROVED BY: HARVEY WANG DATE: 2008/03/31	SCALE 5:1 DESIGN UNITS METRIC THIRD ANGLE PROJECTION	TITLE SUB-ASSEMBLY	MOLEX INCORPORATED DOCUMENT NO. SD-105061-200	SHEET NO. 4 OF 7		
			DRAFT WHERE APPLICABLE MUST REMAIN WITHIN DIMENSIONS							SIZE A3	THIS DRAWING CONTAINS INFORMATION THAT IS PROPRIETARY TO MOLEX INCORPORATED AND SHOULD NOT BE USED WITHOUT WRITTEN PERMISSION

10 9 8 7 6 5 4 3 2 1



- NOTES:
1. MATERIALS: COPPER ALLOY
THICKNESS: 0.30±0.01mm..
 2. FINISH: NICKEL 1.30 MICROMETRE MIN.
 3. COMPLIANT TO RoHS DIRECTIVE 2002/95/EC AND ELV DIRECTIVE 2000/53/EC.
 4. PACKAGING QUANTITIES : 800 PCS PER REEL.

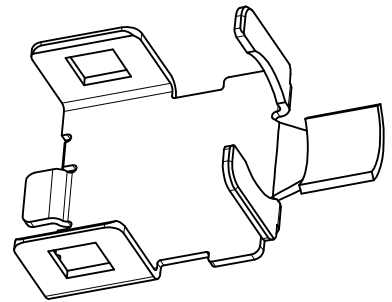
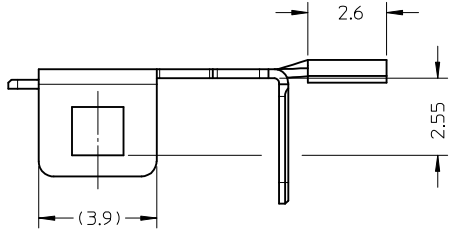


REEL PACKAGING

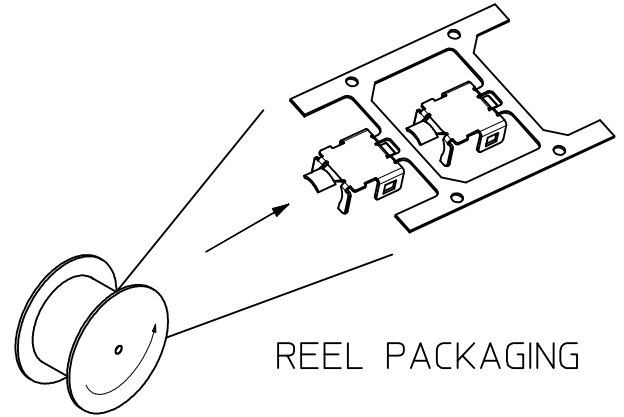
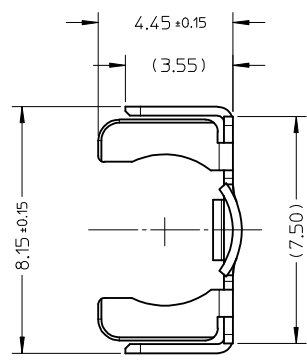
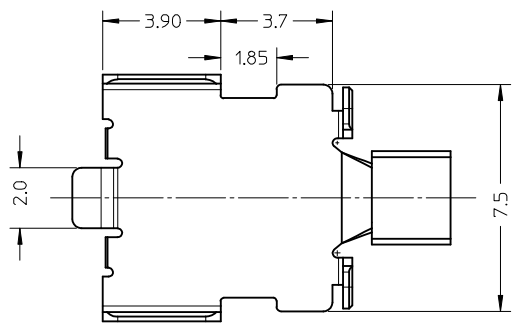
NEW PRODUCT EC NO: SH2010-0088 DRW:KWEI 2009/09/14 CHKD:RZHANG 2009/09/14 APPR:XJ.SONG 2009/09/14	DESCRIPTION REV	QUALITY SYMBOLS ▽=0 ◻=0	GENERAL TOLERANCES (UNLESS SPECIFIED)		DIMENSION STYLE MM ONLY		SCALE 5:1	DESIGN UNITS METRIC	THIRD ANGLE PROJECTION		
			mm	INCH	DRAWN BY	DATE	TITLE				
		4 PLACES	±---	±---	KLAUS WEI	2008/03/31	MAIN SHELL				
		3 PLACES	±---	±---	CHECKED BY	DATE					
2 PLACES	±0.10	±---	ROST ZHANG	2008/03/31	MOLEX INCORPORATED						
1 PLACE	±0.15	±---	APPROVED BY	DATE							
	ANGULAR ±---°		HARVEY WANG	2008/03/31	MATERIAL NO. 105061-0005		DOCUMENT NO. SD-105061-200		SHEET NO. 5 OF 7		
DRAFT WHERE APPLICABLE MUST REMAIN WITHIN DIMENSIONS			SIZE	THIS DRAWING CONTAINS INFORMATION THAT IS PROPRIETARY TO MOLEX INCORPORATED AND SHOULD NOT BE USED WITHOUT WRITTEN PERMISSION							

9 8 7 6 5 4 3 2 1

10 9 8 7 6 5 4 3 2 1



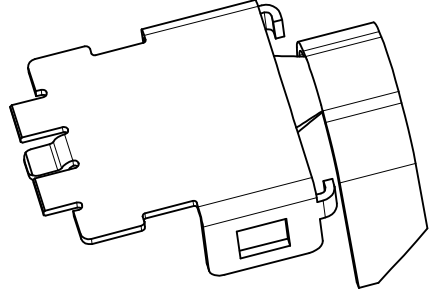
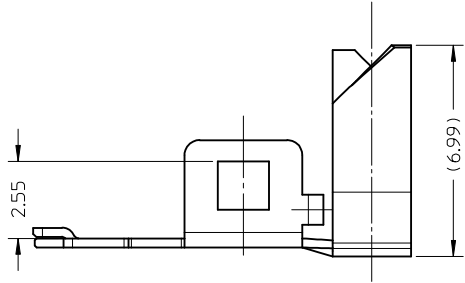
- NOTES:
1. MATERIALS: COPPER ALLOY.
THICKNESS: 0.30±0.01mm.
 2. FINISH: NICKEL 1.30 MICROMETRE MIN.
 3. COMPLIANT TO RoHS DIRECTIVE 2002/95/EC AND ELV DIRECTIVE 2000/53/EC.
 4. PACKAGING QUANTITIES : 1500 PCS PER REEL.



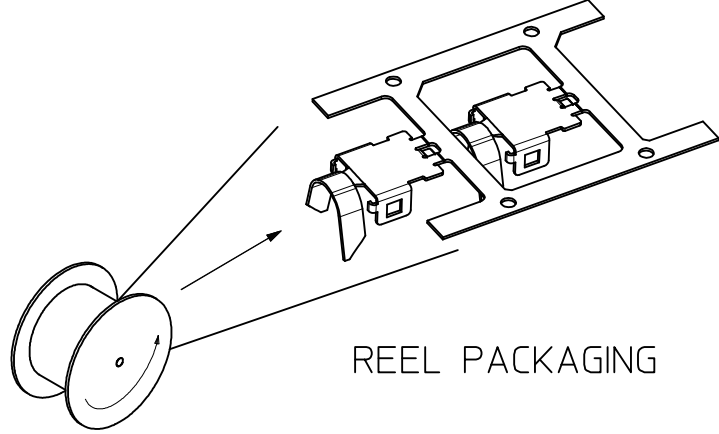
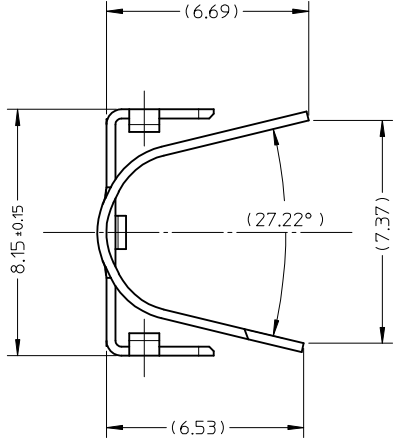
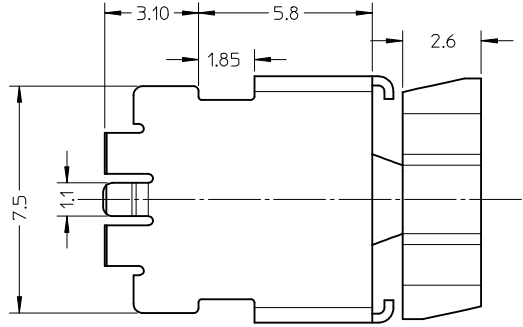
REEL PACKAGING

NEW PRODUCT EC NO: SH2010-0088 DRW:KWEI 2009/09/14 CHK:RZHANG 2009/09/14 APPR:XJSONG 2009/09/21	DESCRIPTION REV	QUALITY SYMBOLS	GENERAL TOLERANCES (UNLESS SPECIFIED)		DIMENSION STYLE	SCALE	DESIGN UNITS	THIRD ANGLE PROJECTION			
		$\nabla=0$ $\text{C}=0$	mm	INCH	MM ONLY	5:1	METRIC				
		4 PLACES ± --- ± --- 3 PLACES ± --- ± --- 2 PLACES ± 0.10 ± --- 1 PLACE ± 0.15 ± ---	ANGULAR ± ---°		DRAWN BY	DATE	TITLE				
		DRAFT WHERE APPLICABLE MUST REMAIN WITHIN DIMENSIONS		105061-0006		KLAUS WEI	2008/03/31	BOTTOM SHELL			
				APPROVED BY		DATE	MOLEX INCORPORATED				
				HARVEY WANG		2008/03/31	DOCUMENT NO. SD-105061-200				
				MATERIAL NO.		105061-0006		SHEET NO. 6 OF 7			
				SIZE		THIS DRAWING CONTAINS INFORMATION THAT IS PROPRIETARY TO MOLEX INCORPORATED AND SHOULD NOT BE USED WITHOUT WRITTEN PERMISSION					
				A3							

9 8 7 6 5 4 3 2 1



- NOTES:
1. MATERIALS: COPPER ALLOY.
THICKNESS: 0.30±0.01mm.
 2. FINISH: NICKEL 1.30 MICROMETRE MIN.
 3. COMPLIANT TO RoHS DIRECTIVE 2002/95/EC AND ELV DIRECTIVE 2000/53/EC.
 4. PACKAGING QUANTITIES : 1500 PCS PER REEL.



NEW PRODUCT EC NO: SH2010-0088 DRW:KWEI 2009/09/14 CHK:RZHANG 2009/09/14 APPR:XJ.SONG 2009/09/21	DESCRIPTION REV	QUALITY SYMBOLS	GENERAL TOLERANCES (UNLESS SPECIFIED)	DIMENSION STYLE	SCALE	DESIGN UNITS	THIRD ANGLE PROJECTION	
		▼=0 Ⓢ=0	mm INCH 4 PLACES ± --- ± --- 3 PLACES ± --- ± --- 2 PLACES ± 0.10 ± --- 1 PLACE ± 0.15 ± --- ANGULAR ± ---°	MM ONLY	5:1	METRIC		
			DRAFT WHERE APPLICABLE MUST REMAIN WITHIN DIMENSIONS	DRAWN BY: KLAUS WEI DATE: 2008/03/31 CHECKED BY: ROST ZHANG DATE: 2008/03/31 APPROVED BY: HARVEY WANG DATE: 2008/03/31	TITLE	TOP SHELL		
				MATERIAL NO. 105061-0007	MOLEX INCORPORATED DOCUMENT NO. SD-105061-200	SHEET NO. 7 OF 7		

Данный компонент на территории Российской Федерации

Вы можете приобрести в компании MosChip.

Для оперативного оформления запроса Вам необходимо перейти по данной ссылке:

<http://moschip.ru/get-element>

Вы можете разместить у нас заказ для любого Вашего проекта, будь то серийное производство или разработка единичного прибора.

В нашем ассортименте представлены ведущие мировые производители активных и пассивных электронных компонентов.

Нашей специализацией является поставка электронной компонентной базы двойного назначения, продукции таких производителей как XILINX, Intel (ex.ALTERA), Vicor, Microchip, Texas Instruments, Analog Devices, Mini-Circuits, Amphenol, Glenair.

Сотрудничество с глобальными дистрибьюторами электронных компонентов, предоставляет возможность заказывать и получать с международных складов практически любой перечень компонентов в оптимальные для Вас сроки.

На всех этапах разработки и производства наши партнеры могут получить квалифицированную поддержку опытных инженеров.

Система менеджмента качества компании отвечает требованиям в соответствии с ГОСТ Р ИСО 9001, ГОСТ РВ 0015-002 и ЭС РД 009

Офис по работе с юридическими лицами:

105318, г.Москва, ул.Щербаковская д.3, офис 1107, 1118, ДЦ «Щербаковский»

Телефон: +7 495 668-12-70 (многоканальный)

Факс: +7 495 668-12-70 (доб.304)

E-mail: info@moschip.ru

Skype отдела продаж:

moschip.ru

moschip.ru_4

moschip.ru_6

moschip.ru_9